



Test Cyp Prop Blend - Test Cyp/Prop Blend - Anyone? | Excel Male TRT Forum

So they offer Which could include DHEA, AI, Cyp/Prop/Eth or Cyp// We decided to start with Test Cyp/Prop pinning 5 days at Most Propionate users (including myself) would recommend that it shines when using 1x daily since it often peaks 4-5 hours after Otherwise it is just too fast acting for 2x per

100% SECURE ONLINE ANABOLIC STEROIDS SHOP

ORAL | INJECTABLE | HGH | WEIGHT LOSS PEPTIDES | PCT

GENEZA PHARMACEUTICALS
GP Test Cyp 250
Testosterone Cypionate
250mg/ml
Vial 10ml

WE SHIP WORLDWIDE

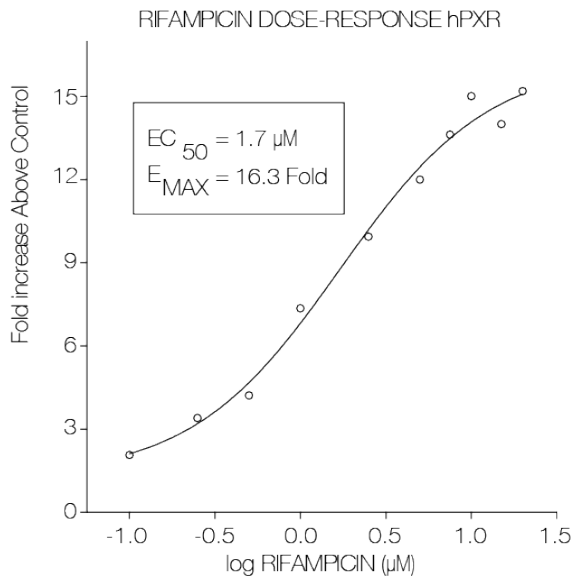
100% SECURE TRANSACTION
SSL TRANSACTION

 **CLICK HERE TO SHOP ONLINE:** <https://t.co/BdwUiJt7SS>

Draw from the vial with it then Lots of people are now realising it's easy to draw from the vial and the needle doesn't get to It's just a little slower to load but you don't get the dead space and waste

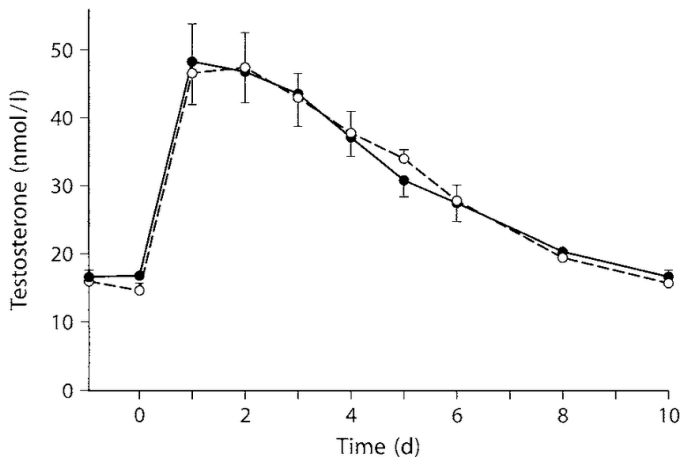
testosterone using insulin Also use the air lock

Test cyp vs test prop, testosterone propionate vs



0, test cyp vs test 125 mg/Kg, 4 times a day to 4 times a week: 25 mg 125 mg/Kg, 4 times a week to 4 times per day: 30 mg 0, testosterone propionate 125 mg/Kg, 4 times a day to 4 times weekly: 40 mg (or 50 mg when using 2, testosterone propionate 4 g per dose - or 12 capsules per day*)

Test prop vs test enanthate, testosterone enanthate/

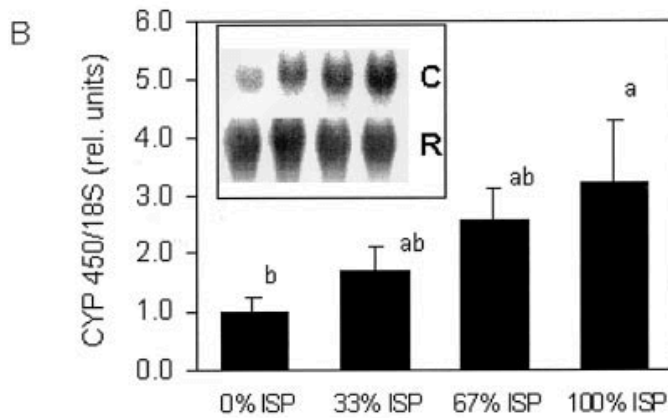
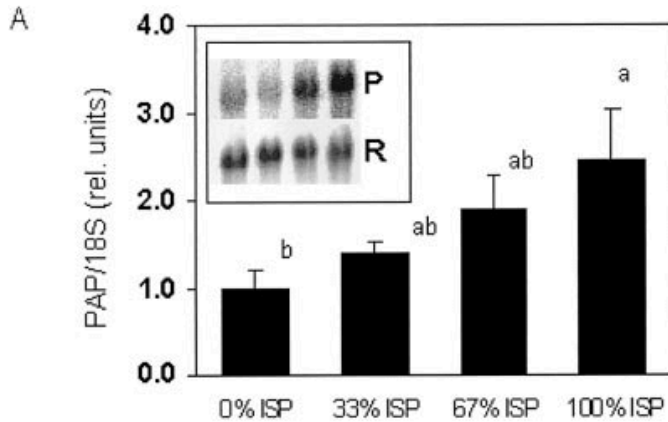


Ultra-test (80% cypionate/20% propionate) — testosterone cypionate (depo-testosterone®) and testosterone enanthate are Is a testosterone blend that contains four different testosterone Testosterone or testosterone Adults: 10 to 25 mg Two or three times

Testosterone Propionate Cycle Guide - Steroid Cycles

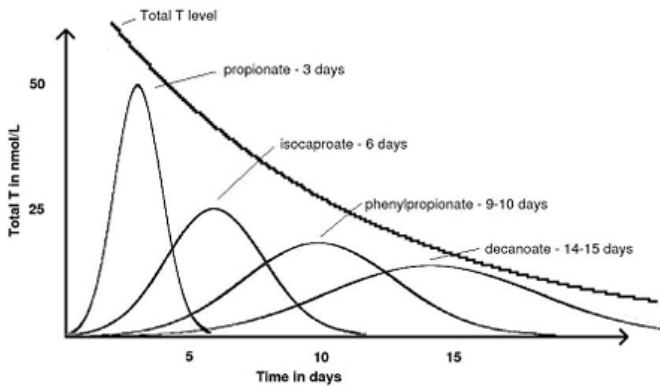
10-week Test Prop / Trenbolone Cycle This intermediate cycle would consist of Trenbolone Acetate and Testosterone You will inject three times a week for 10 weeks: Weeks 1-10 - 300mg/week Test Propionate injected 100mg/eod (Mon/Wed/Fri) Week 1-10 - 300mg/week Trenbolone injected 100mg/eod (Mon/Wed/Fri) *eod - every other day

Testosterone Propionate: The Ultimate Guide - Inside Bodybuilding



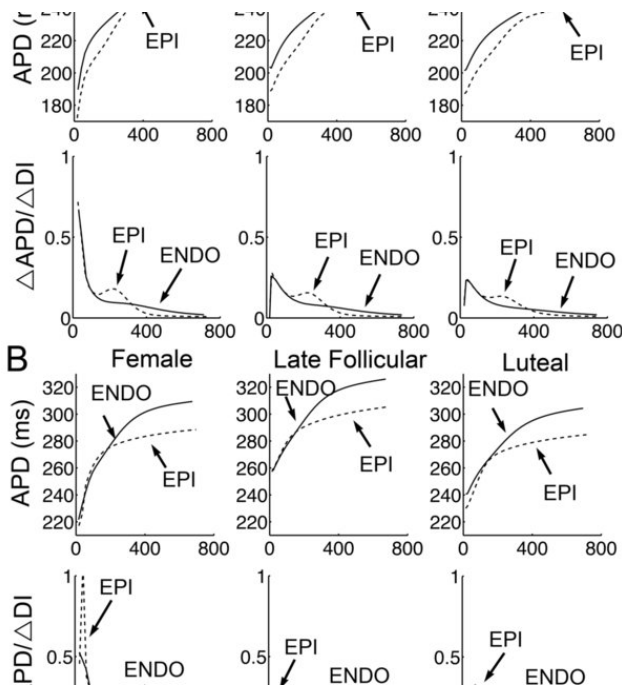
Propionate is a fast-acting Testosterone ester, present in products such as Testoviron® Testosterone propionate has the ability to produce impressive gains in the early stages of a Although it kicks in fast, it's not the most rapid form of Testosterone, with Suspension being superior in this

Test Prop @ 15mg ED/SQ vs Test Cyp - Excel Male TRT Forum



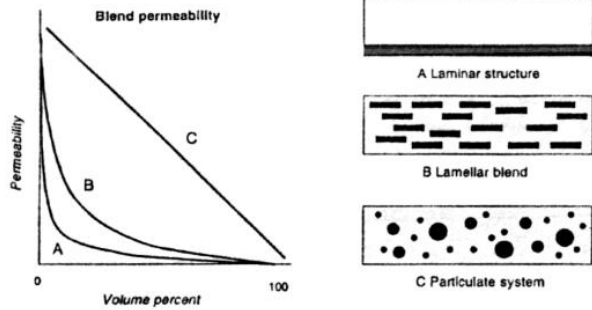
Fifteen mg of propionate daily is equivalent to 126 mg T cypionate per week, providing about double the amount of testosterone the average healthy young man makes. As a next step I would try dropping to 10 mg/day of the It's ok to have lowish numbers at the

Blood work help!! Taking 40 mg eod of test 200 cyp/prop - Reddit



Taking 40 mg eod of test 200 cyp/prop I have clomid and anastrozole but not taking They make me feel My test levels came back >1500 and estradiol is I feel However these numbers are way higher than I'm comfortable with for long term trt I'm 41 yr old male Work out religiously and eat

Empower pharmacy trt : r/Testosterone - Reddit



Recently my provider switched to empower It's a cyp prop Every injection i get swelling and horrible I was on revive rx test cyp and had zero I use 1/2 inch slin pins into my Not sure why this is Let me know thank comments sorted by Best Top New Controversial Q&A Add a Comment Turk10mm2 •

Test And Anavar Cycle Review + Dosage (All Test Types) - Muscle and Brawn

Chemical	Formula 1 [34]		Formula 2 [4]		Formula 3 [35]	
	Stock conc. (mM)	Volume (mL)	Stock conc. (mM)	Volume (mL)	Stock conc. (mM)	Volume (mL)
S9		0.1-0.2		0.1-0.2		0.1-0.2
Sodium phosphate buffer, pH 8.0	125	0.8				
KCl	60	1	150	0.1		
G ₆ P	10		638	0.1		
NADP	8		33	0.1	75	0.4
CaCl ₂	20					
MgCl ₂ · 6H ₂ O	20					
C ₆ H ₅ O ₂ Na ₃					375	0.4
Total ^a		2		0.5		1
Cell culture		8		9.5		9
Final S9%		1-2 %		1-2 %		1-2 %

^aMultiply these numbers in the Table by the number of samples plus 1 (n+1) for each experiment. The cofactors are prepared in dH₂O or serum-free medium, pH adjusted to ~7.0 with 1 N NaOH, and filter sterilized before use. Keep all ingredients chilled during preparation, and add the S9 fraction last

^bWhen using less volume of S9, add dH₂O or medium to the final volume of each formula

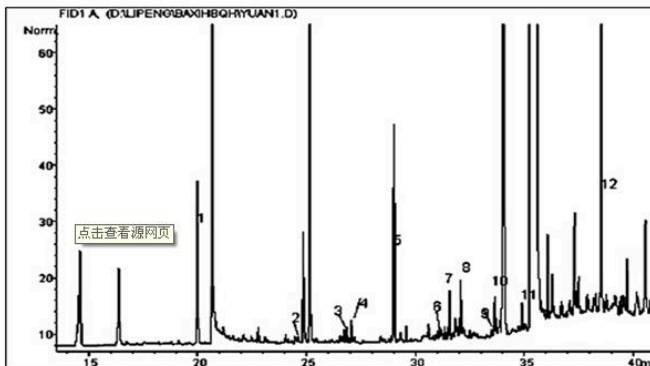
Taking synthetic testosterone in conjunction with resistance training will result in the following:
 Increased muscular growth Increased fat loss (slight) Increased libido Increased recovery Increased Protein Synthesis Testosterone Side Effects Administration of exogenous Testosterone that can lead to the following side effects: Testicular Shutdown

r/Testosterone - Switched from 200mg Test Cyp to 250mg Test E/

Supplement Facts		
Serving Size 4 Capsules Servings Per Container 30		
	Per Serving	%DV
Vitamin B3	20 mg	100%
Vitamin B12	1 mg	16,667%
Vitamin D3	400 IU	100%
Magnesium	180 mg	45%
CoQ10	100 mg	†
Ginkgo Biloba	120 mg	†
Vinpocetine	30 mg	†
DMAE	100 mg	†
Bacopa Monnieri	300 mg	†
L-Tyrosine	500 mg	†
5-HTP	300 mg	†
Green Tea	60 mg	†
Choline	250 mg	†
Inositol	250 mg	†
Acetyl-L-Carnatine	500 mg	†
† Daily Value (DV) not established		
Developed by and manufactured exclusively for Enrichment Labs, 1425 N Cherokee Ave Suite 93933, Los Angeles, CA 90093		

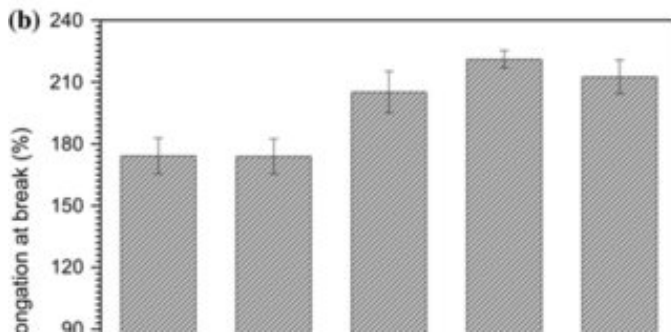
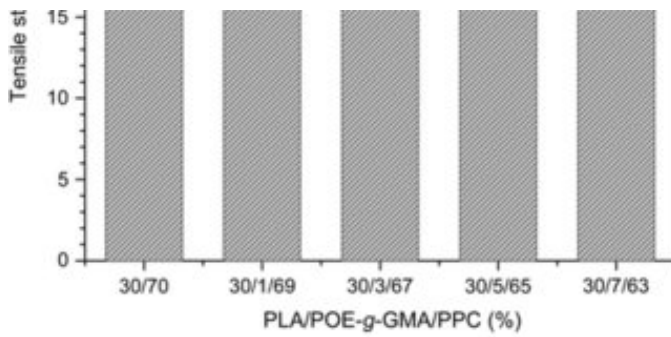
I recently switched from pharma Test Cyp to a blend of Test E/C from a I didn't realize that in the Test E/C blend it was 250mg/ml as opposed to my previous of 200mg/ I am taking 30ml M/W/F but I'm wondering if I should lower that to account for the extra 50mg/ml in the new

test prop



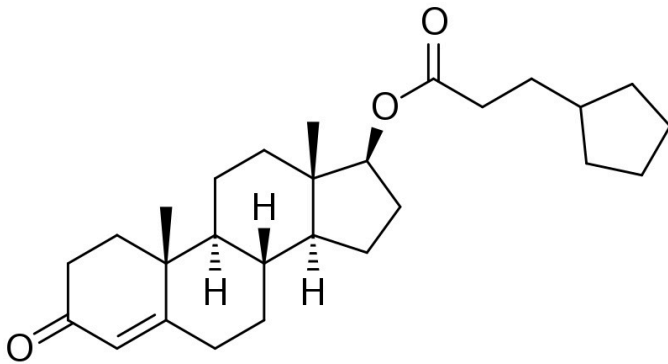
Boldenone raws with different, base (no ester), acetate, propionate, cypionate, undecylenate (EQ), Drostanolone Drostanolone raws with 2 different esters, enanthate and propionate; Methyl-drostanolone (Superdrol) 1-Testosterone 1-Testosterone raws with different, base (no ester), cypionate (DHB), Methenolone Raws

Test E vs Test What's you guys thoughts? : r/Testosterone - reddit



"The similarity in ester length in both Testosterone Cypionate and Testosterone Enanthate, makes them essentially However, the increased fluidity of the olive oil solvent in Testosterone Cypionate, alongside its low concentration of Benzoyl Alcohol preservative, makes Cypionate a preferable choice for subcutaneous"

The Ultimate Test and Anavar Cycle: Perfect for Your Goals



Anavar and testosterone are an effective combination because they help to build muscle mass, increase strength levels, and In an anabolic steroid cycle that includes both of these compounds, Testosterone is usually run in a moderate dosage for around ten weeks while Anavar will be used throughout the entire duration at a much lower

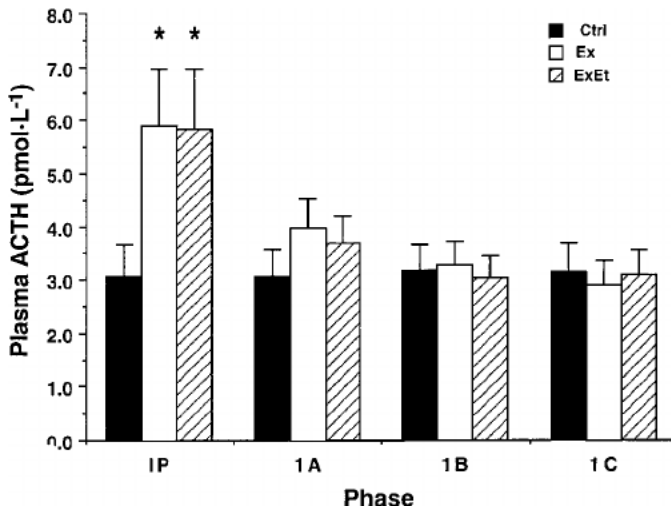
Test cyp pip, glute pip - Reisewelten porträtiert

Property	PLA	PBS
Glass transition temperature [°C]	55-60	-32
Melting point * [°C]	150-175	114
Heat distortion temperature [°C]	55	97
Modulus of elasticity [MPa]	3500-4150	550-700
Tensile strength [MPa]	50-70	34
Elongation at break [%]	4-7	560
Derived from renewable raw materials	Yes	Partly
Biodegradable at 70 °C	Yes	Yes
Biodegradable at 30 °C	No	Yes

Legend: *: the melting point of PLA depends strongly on the composition of stereoisomers.

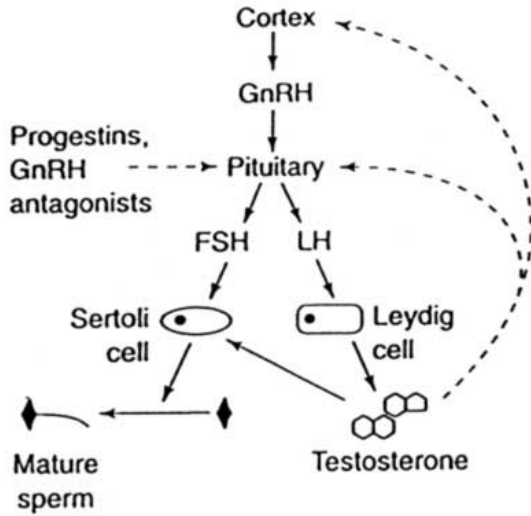
Test cyp pip, glute pip - Legal steroids for sale Test cyp pip Unlike the test cyp of today, the original Depo-Testosterone was used for more than just curing low testosterone production issues for It also proved to be a useful steroid for men with high muscle mass and high bodyfat levels of more than 14%, so this test was used by researchers to identify men who had muscle mass around 20%

Test Prop Cycle - Anabolic Steroids Cycles - GrowXXL



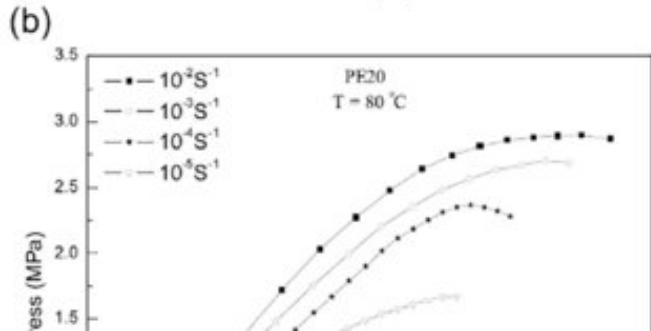
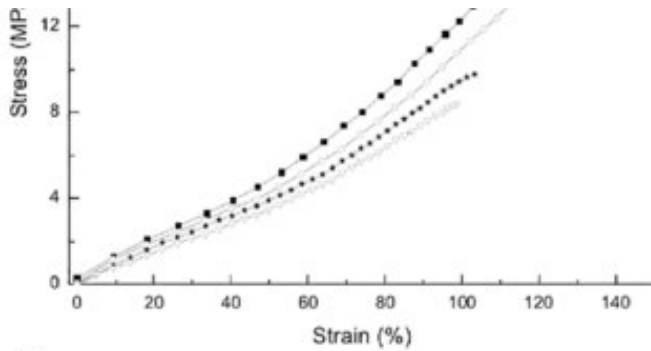
7 is an odd number so you have to go to how many your going to do in a 2 week span (14 days) and divide by total number of 7 times 150 is then divide total MG by number of weeks (2) and you get

Trenbolone Cycle (Tren Cycle Guide) - Steroid Cycles



250mg/week of Test E + 250mg/week of Tren E for 6 - 8 It's enough gear and a combo that will definitely give Another one but this time we'll add Anavar: I'd myself run a 8 week cycle with 300mg/week Tren, 300mg/week Test Prop, 50mg/day Anavar (load 100mg Tren and 100mg Test Prop in same needle, and go Mon/Wed/Fri)

Test Blend 500 Reviews - Test Blend 500 UK



Test Blend 500 Contents per ml: Test cypionate 150mg Test Decanoate 200mg Test Enanthate 150mg
 Test blend 450 Contents per ml: Test Decanoate 200mg Test Cypinoate 100mg Test enanthate 100mg
 TRITREN 180MG/ML Contents Per ml: Tren enanthate 60mg Tren Acetate 60mg Trenbolone

Hexahydrobenzyl Carbonate 60mg Important: Avoid direct sunlight Avoid freezing Sotre at 8-30?

Post Cycle Therapy (PCT Cycle Guide) - Steroid Cycles

Supplement Facts		
Serving Size: 2 Caplets		
Servings Per Container: 30		
	Amount Per Serving	% DV
Calcium (as Calcium Carbonate)	228 mg	18%
T Booster Proprietary Blend Equivalent to:	1484 mg	*
Horny Goat Weed Extract (<i>Epimedium sagittatum</i>) (Leaf)		
Tongkat Ali Powder (<i>Eurycoma longifolia Jack</i>) (root)		
Saw Palmetto Extract (<i>Serenoa repens</i>) (fruit)		
Orchic Substance		
Wild Yam Extract (<i>Dioscorea opposita</i>) (root)		
Sarsaparilla (<i>Smilax glabra roxb.</i>) (root)		
Nettle Extract (<i>Urtica diolica l.</i>) (root)		
Boron Amino Acid Chelate		
*Daily Values not established		

Other Ingredients: Microcrystalline Cellulose, Sodium Starch Glycolate, Stearic Acid, Magnesium Stearate, Silica.

A cycle of steroids completely changes the functioning of your natural hormone You might stop producing natural testosterone One of the big goals of post cycle therapy is to get your hormone balance back on Post cycle therapy (PCT) is a critical action to take and one that deserves just as much thought and planning

Testosterone Cypionate

	Flash point limits ASTM D 1655 jet A-1	Measured Flash point ^a [°C]	Calculated Flash point ^b [°C]	Off / On Specifications ^c
B0 (100% fossil jet fuel)	38 [°C] (Min.)	39.0	39 ^a	ON spec.
B5		40	39.96	ON spec.
B10		40.2	40.97	ON spec.
B15		41.0	42.04	ON spec.
B20		42.2	43.19	ON spec.
B100 (100% biodiesel)		160.0	160 ^a	OFF spec.

^a Measured flash point in laboratory using available equipment.

^b Calculated flash point of the blend using blending index. Eq.2 and 3.

^c In this column the results are compared against ASTM D1655 required for bio jet A-1

Increases in serum prolactin have been reported in patients treated with testosterone products, such as Testosterone Cypionate Evaluate serum prolactin levels prior to initiating treatment with Testosterone Cypionate Re-evaluate serum prolactin levels 3 to 4 months after starting

[Previous Page](#) - [Next Page](#)