

Knowing Chart Pattern for Newbie

معرفة نمط الرسم البياني للمبتدئين

Mengetahui Pola Grafik untuk Pemula



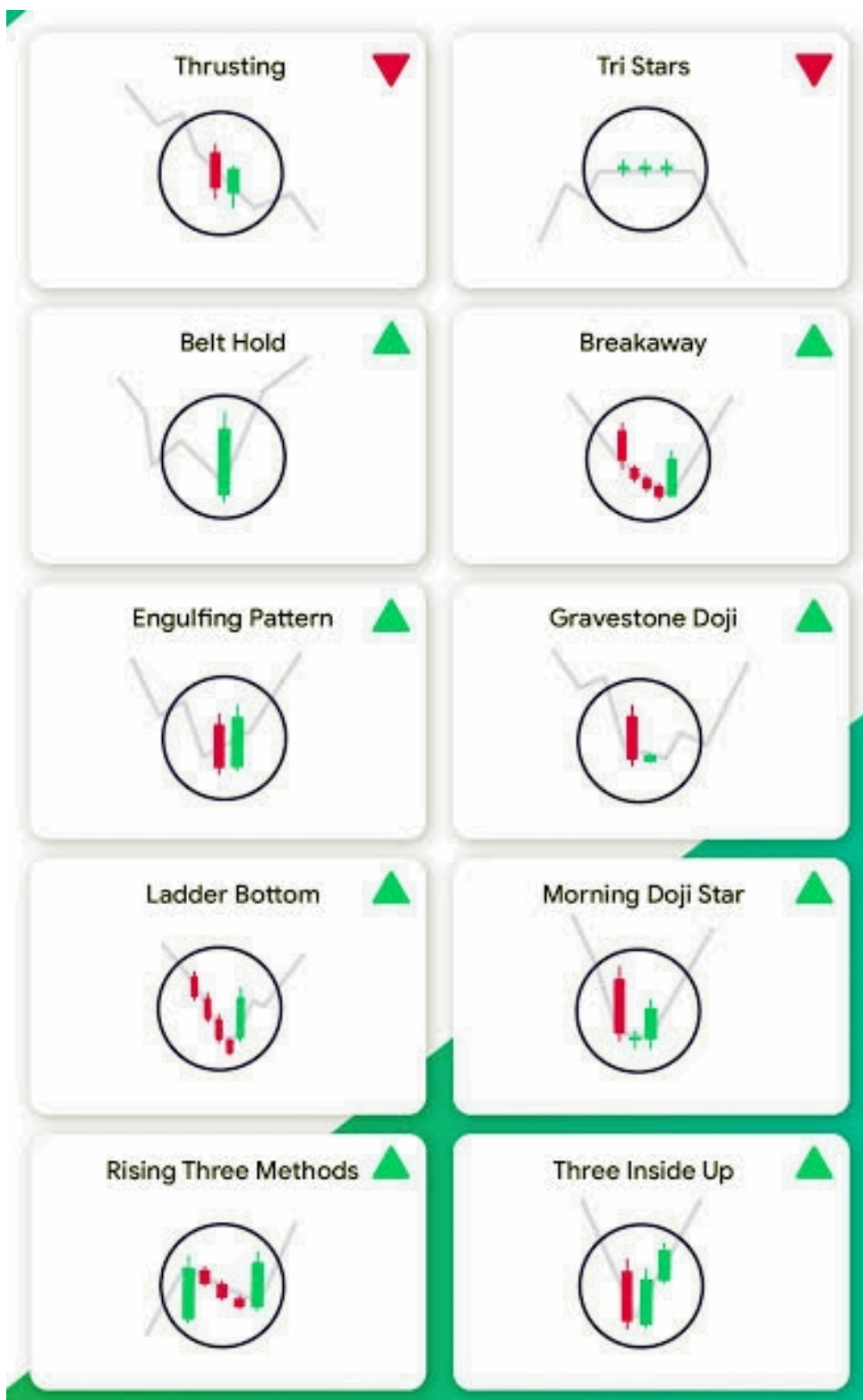
Presented by Wildanum Wild Wolf Founder www.investmology.com
قدم بواسطة ولدنم ولد ولف www.investmology.com



InvestMology
COM

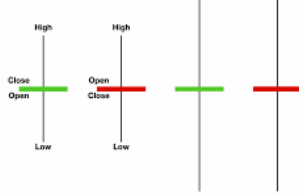
Candlestick Shape Introduction Pengenalan Bentuk Candlestick

مقدمة على شكل شمعدان



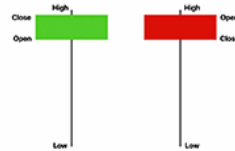
10 PRICE ACTION CANDLESTICK PATTERNS YOU MUST KNOW

Doji Candlesticks

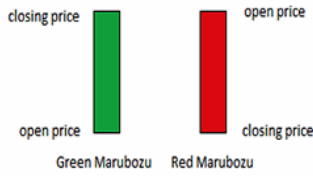


DOJI

Hanging Man Candlestick



Hammer

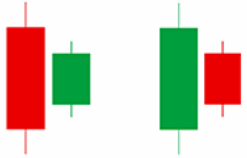


Marubozu



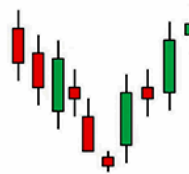
Inverted Hammer

BULLISH HARAMI BEARISH HARAMI



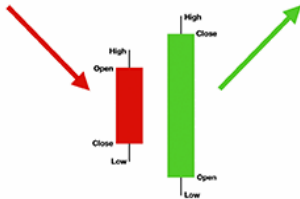
Harami

MORNING STAR

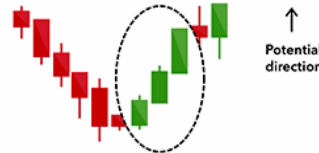


Morning Star

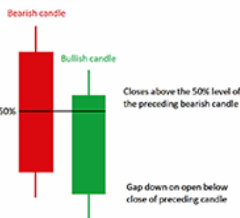
Bullish Engulfing Pattern



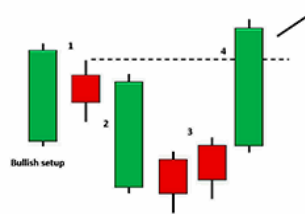
Engulfing



Three White Soldiers



Piercing Line



Hikkake

DOWNSIDE REVERSAL CANDLESTICK PATTERN



HANGING MAN



SHOOTING STAR



EVENING STAR



EVENING DOJI STAR



BEARISH GRAVESTONE DOJI



BEARISH LONG LEGGED DOJI



TWEEZERS TOP



BEARISH BELT HOLD



THREE BLACK CROWS



DARK CLOUD COVER



BEARISH ENGULFING



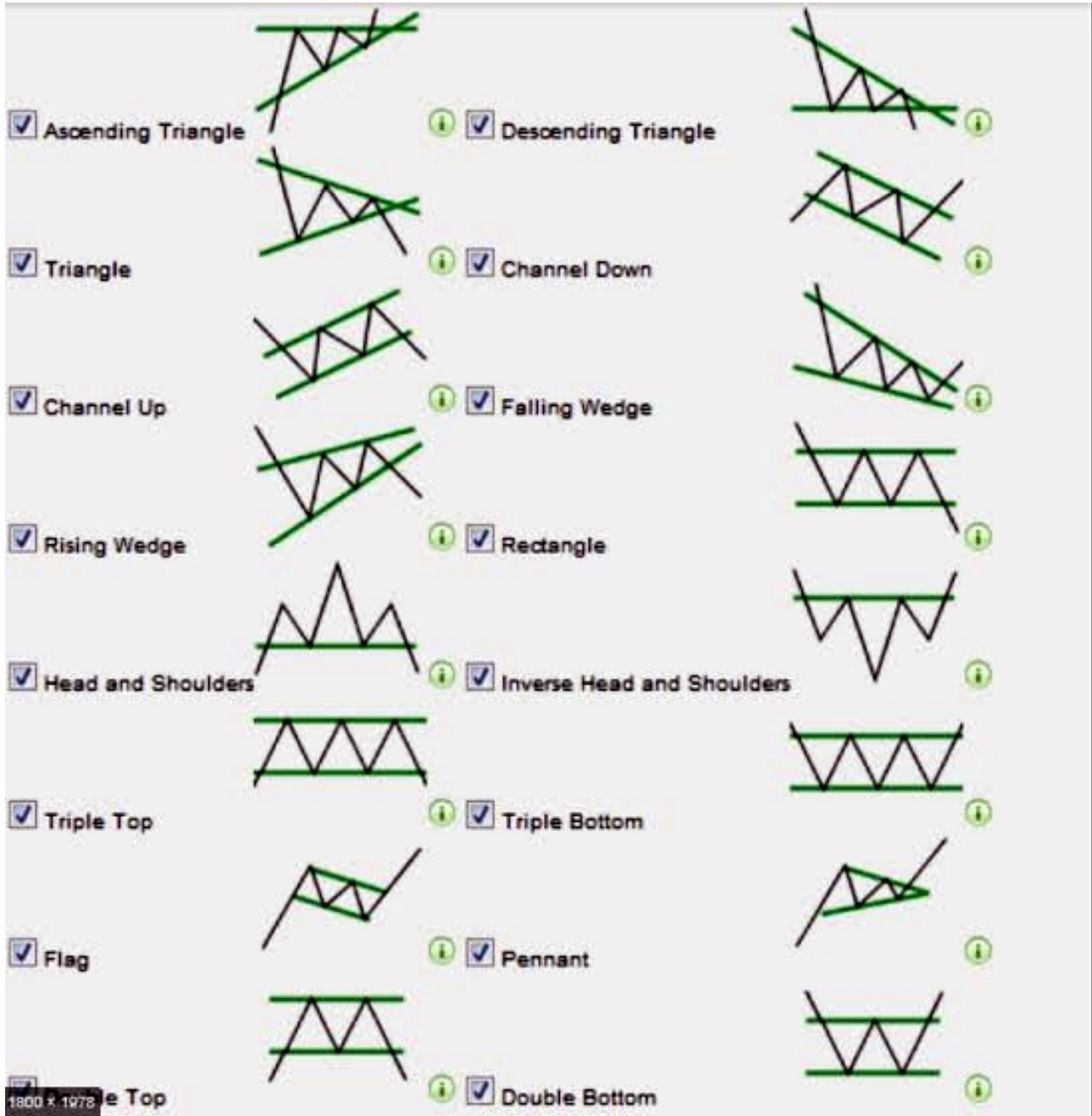
BEARISH COUNTERATTACK LINE



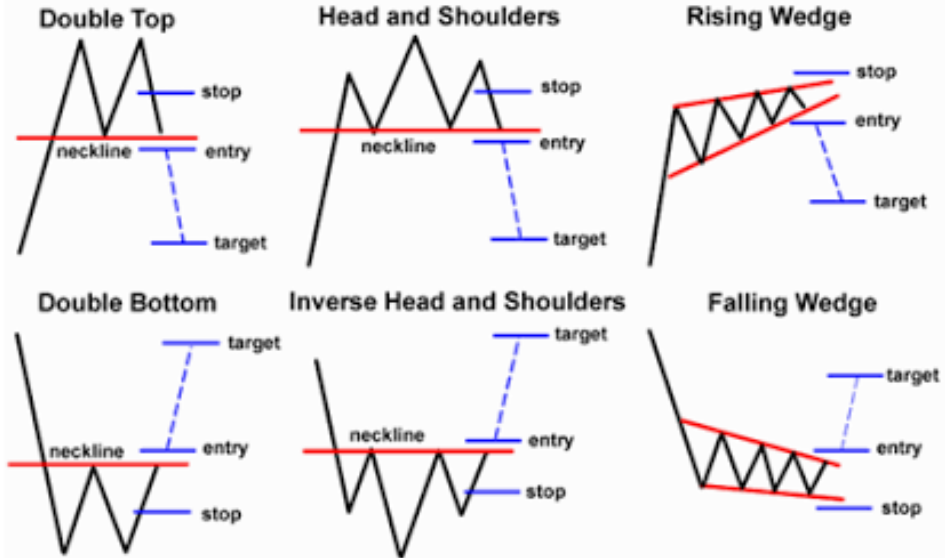
BEARISH HARAMI

Classic Chart Pattern

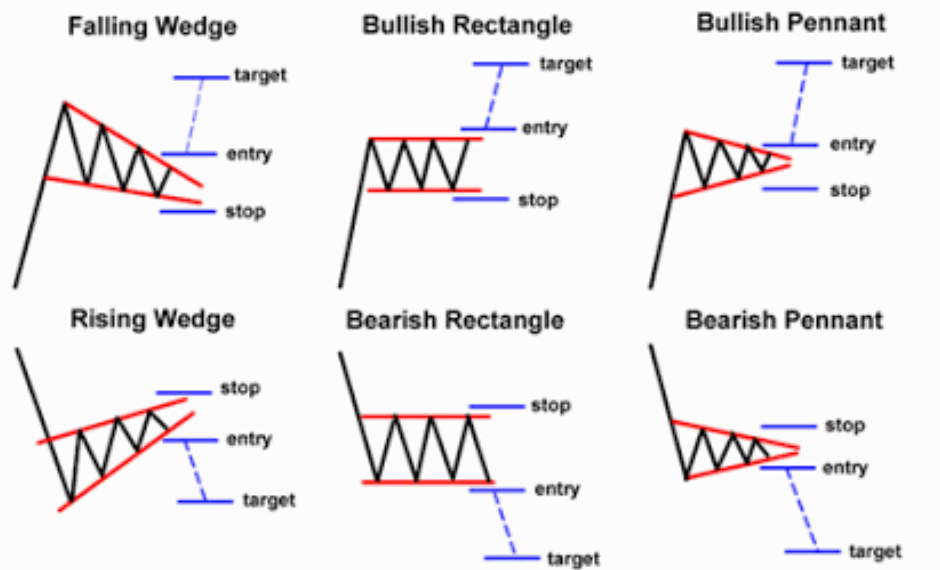
نمط الرسم البياني الكلاسيكي



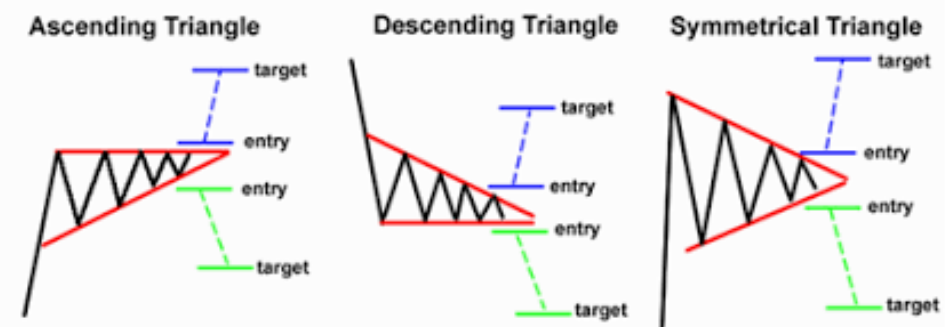
Reversal Patterns



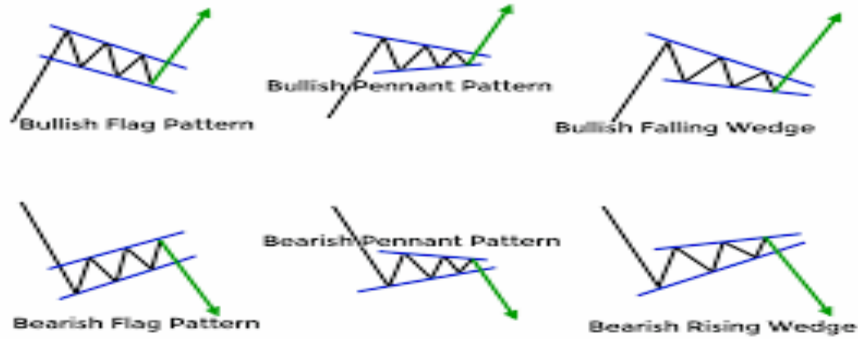
Continuation Patterns



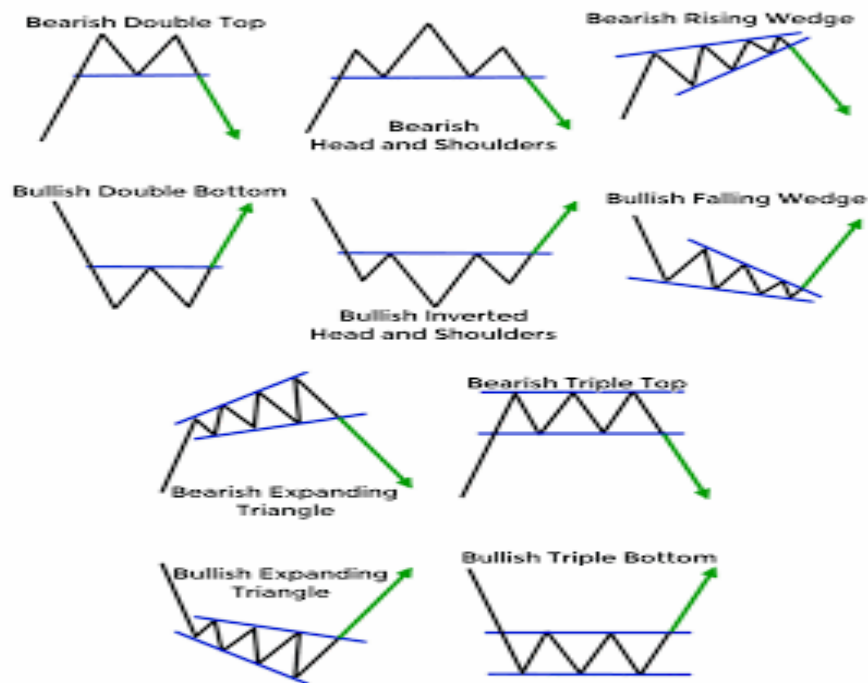
Bilateral Patterns



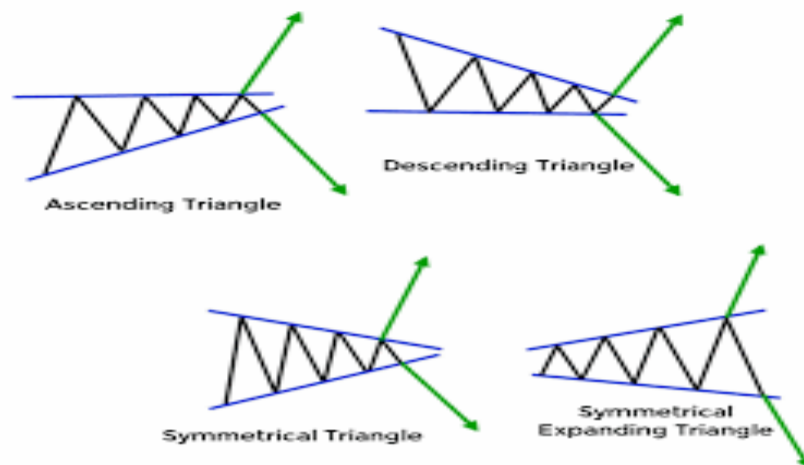
Continuation Patterns:



Reversal Patterns:

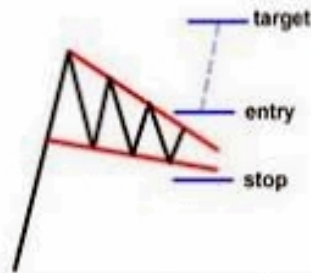


Neutral Patterns:



CONTINUATION PATTERN

Falling Wedge



Rising Wedge

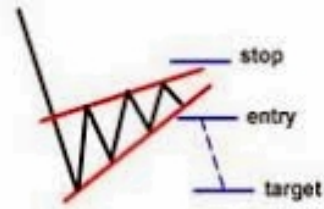
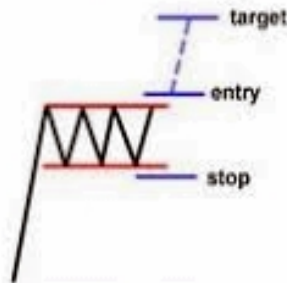


CHART PATTERN	TREND	TYPE of SIGNAL	BREAKOUT
FALLING WEDGE	UPTREND	CONTINUATION	UP
RAISING WEDGE	DOWNTREND	CONTINUATION	DOWN

Bullish Rectangle



Bearish Rectangle

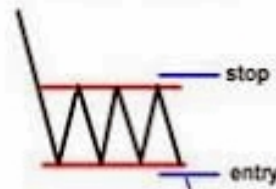
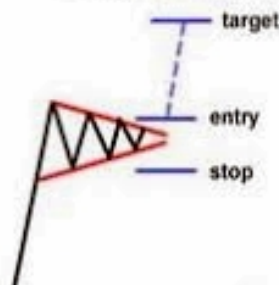


CHART PATTERN	TREND	TYPE of SIGNAL	BREAKOUT
BULLISH RECTANGLE	UPTREND	CONTINUATION	UP
BEARISH RECTANGLE	DOWNTREND	CONTINUATION	DOWN

Bullish Pennant



Bearish Pennant

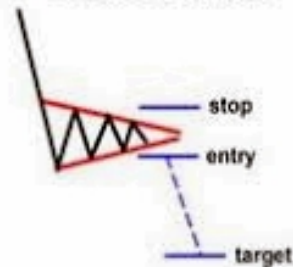


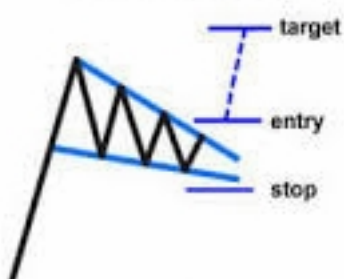
CHART PATTERN	TREND	TYPE of SIGNAL	BREAKOUT
BULLISH PENNANT	UPTREND	CONTINUATION	UP
BEARISH PENNANT	DOWNTREND	CONTINUATION	DOWN

REVERSAL CHART PATTERNS



Continuation Patterns

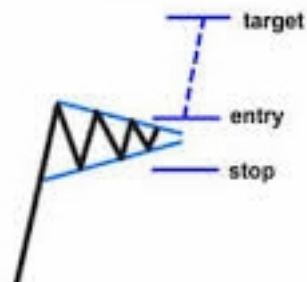
Falling Wedge



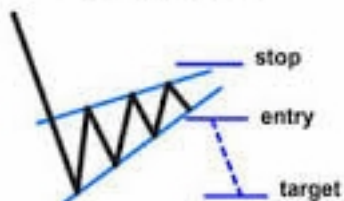
Bullish Rectangle



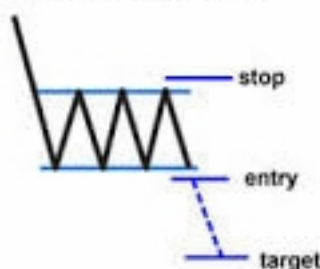
Bullish Pennant



Rising Wedge



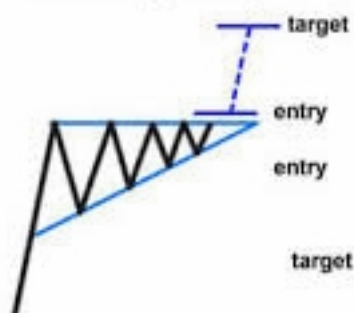
Bearish Rectangle



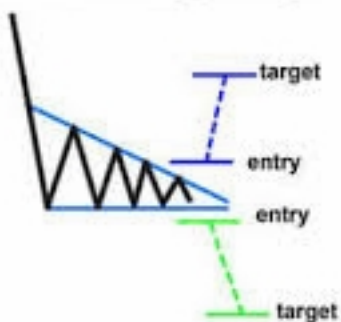
Bearish Pennant



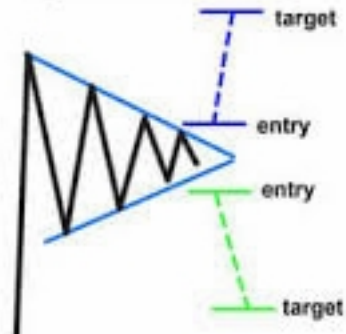
Ascending Triangle



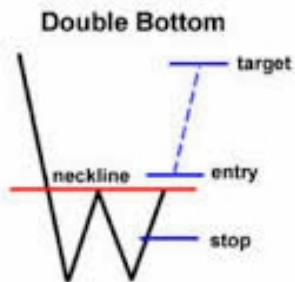
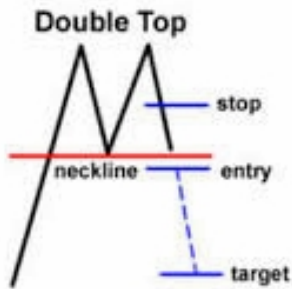
Descending Triangle



Symmetrical Triangle



Reversal Pattern



Modern Chart Pattern

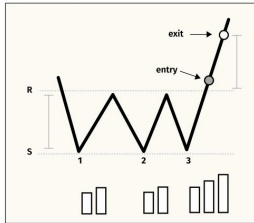
نمط الرسم البياني الحديث

REVERSAL PATTERNS

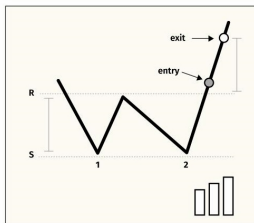
CONTINUATION PATTERNS

BULLISH

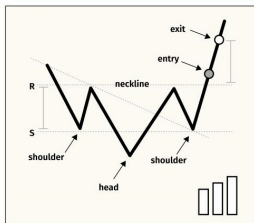
Triple Bottom



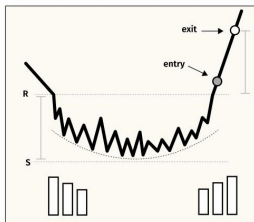
Double Bottom



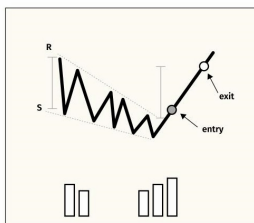
Inverse Head & Shoulders



Rounded Bottom

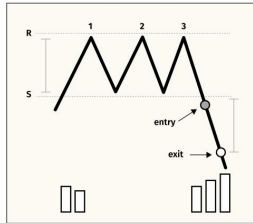


Falling Wedge

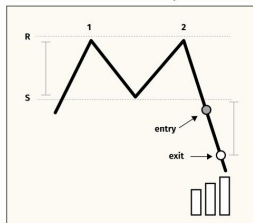


BEARISH

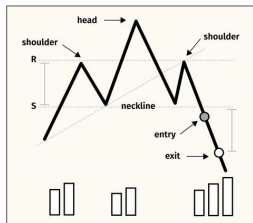
Triple Top



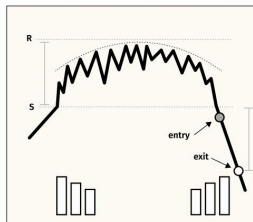
Double Top



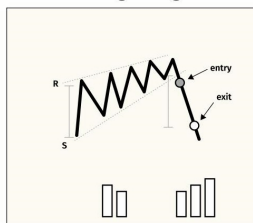
Head & Shoulders



Rounded Top

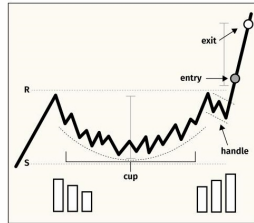


Rising Wedge

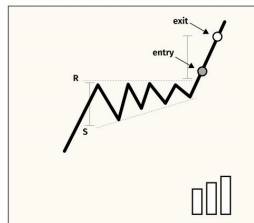


BULLISH

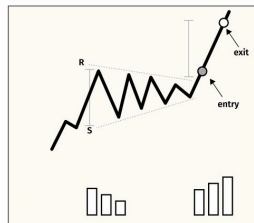
Cup & Handle



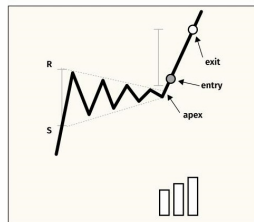
Ascending Triangle



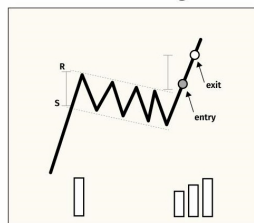
Bullish Symmetrical Triangle



Bullish Pennant

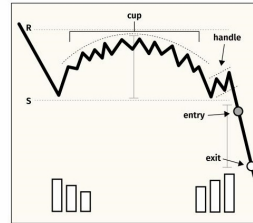


Bullish Flag

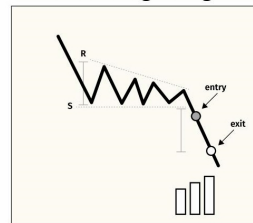


BEARISH

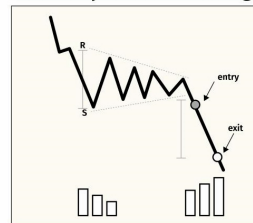
Inverted Cup & Handle



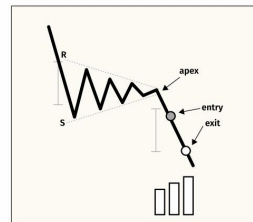
Descending Triangle



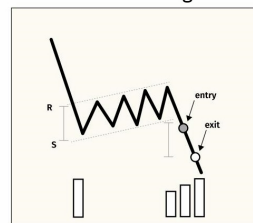
Bearish Symmetrical Triangle

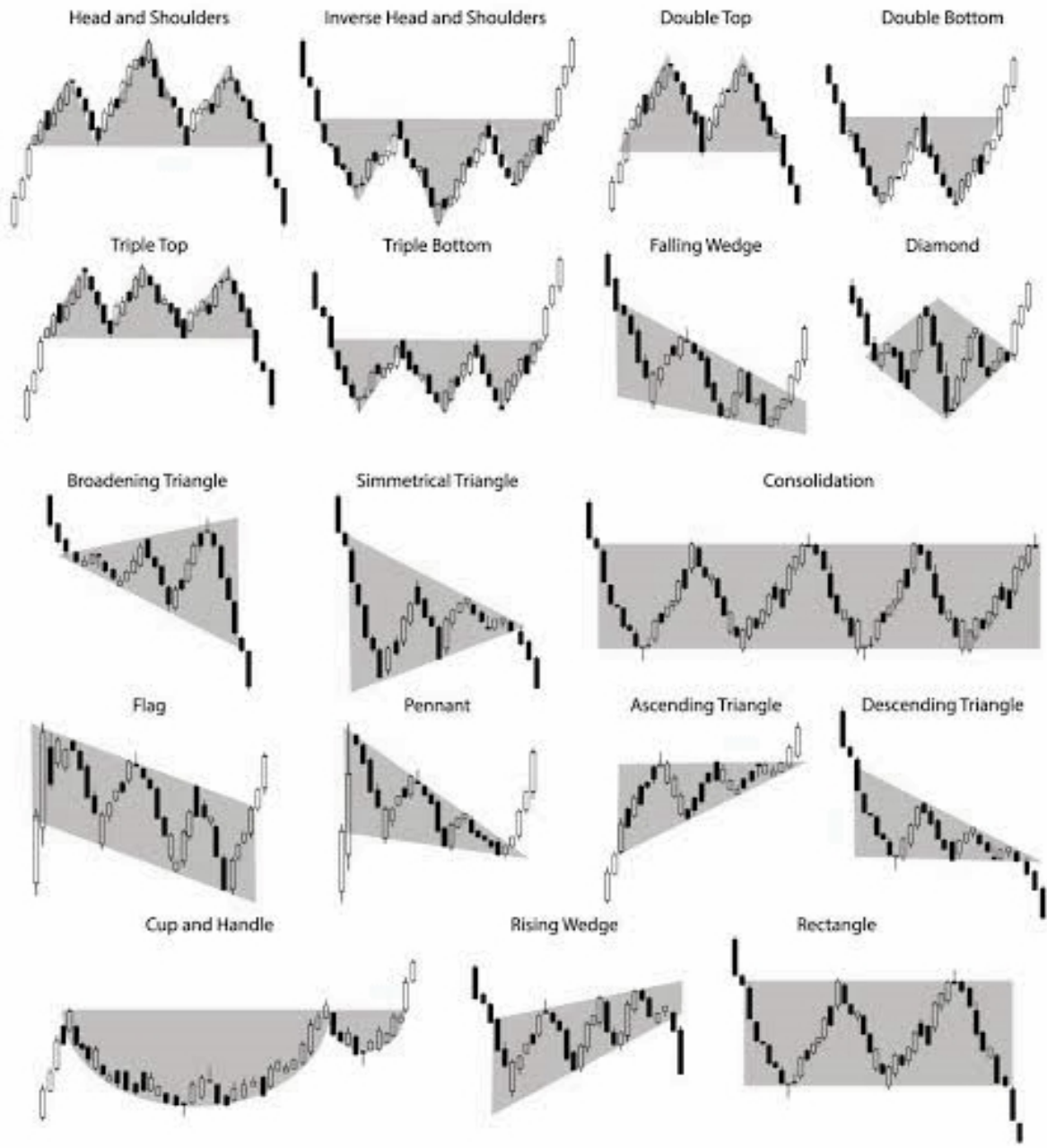


Bearish Pennant



Bearish Flag





BULLISH PATTERNS

BULL FLAG



CUP WITH HANDLE



ASCENDING TRIANGLE



BEARISH PATTERNS

BEAR FLAG



INVERTED CUP WITH HANDLE



DESCENDING TRIANGLE



BEARISH REVERSAL PATTERNS

DOUBLE TOP



HEAD AND SHOULDERS



TRIPLE TOP



BULLISH REVERSAL PATTERNS

DOUBLE BOTTOM

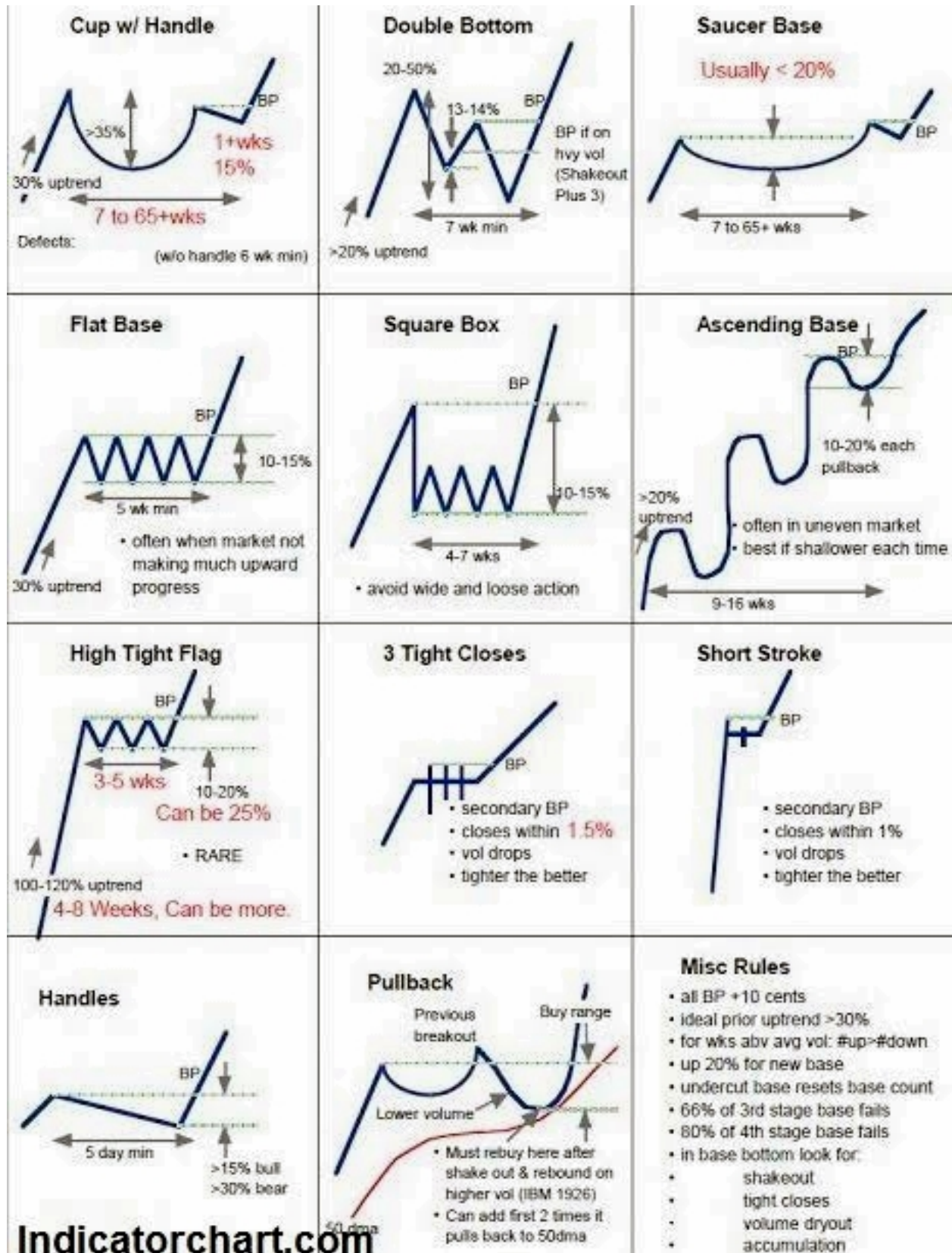


INVERTED HEAD AND SHOULDERS



TRIPLE BOTTOM





Bullish patterns (going up)



Flag



Pennant



Cup with handle



Ascending triangle



Symmetrical triangle



Measured move up



Ascending scallop



3 rising valleys

Bearish patterns (going down)



Flag



Pennant



Inverted Cup with handle



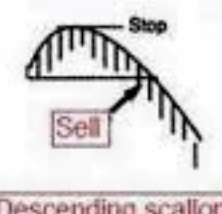
Descending triangle



Symmetrical triangle



Measured move down



Descending scallop



3 descending peaks

Reversal patterns



Double bottoms





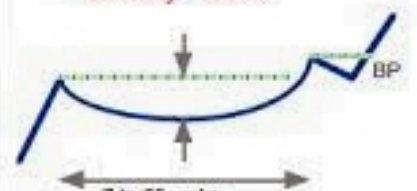

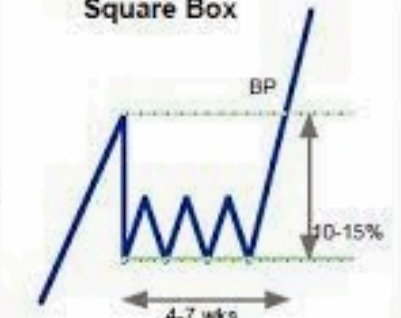
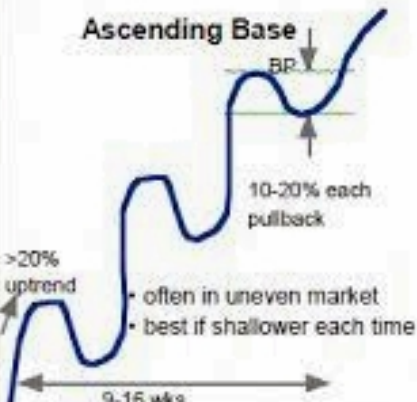

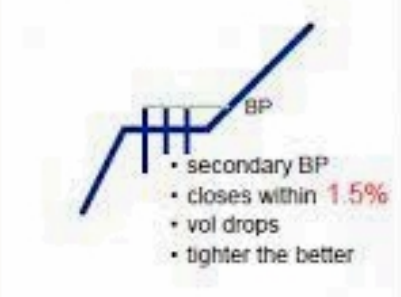
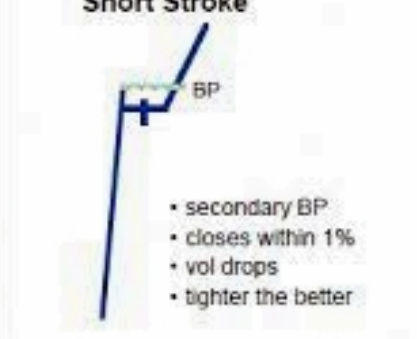
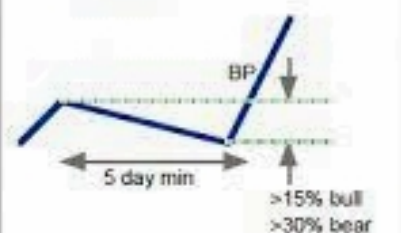
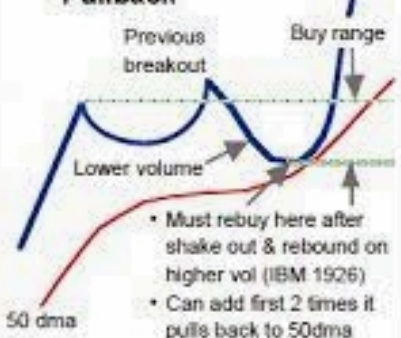
Diamond bottoms

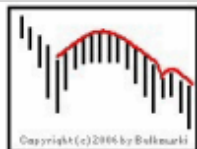


Tops rectangle



Head and shoulders top

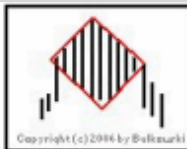
<h3>Cup w/ Handle</h3>  <p>30% uptrend >35% 1+wks 15% 7 to 65+wks BP</p> <p>Defects: (w/o handle 6 wk min)</p>	<h3>Double Bottom</h3>  <p>20-50% 13-14% BP BP if on hvy vol (Shakeout Plus 3) 7 wk min >20% uptrend</p>	<h3>Saucer Base</h3> <p>Usually < 20%</p>  <p>7 to 65+ wks BP</p>
<h3>Flat Base</h3>  <p>30% uptrend BP 10-15% 5 wk min • often when market not making much upward progress</p>	<h3>Square Box</h3>  <p>BP 10-15% 4-7 wks • avoid wide and loose action</p>	<h3>Ascending Base</h3>  <p>BP 10-20% each pullback >20% uptrend • often in uneven market • best if shallower each time 9-16 wks</p>
<h3>High Tight Flag</h3>  <p>BP 3-5 wks 10-20% Can be 25% • RARE 100-120% uptrend 4-8 Weeks, Can be more.</p>	<h3>3 Tight Closes</h3>  <p>BP • secondary BP • closes within 1.5% • vol drops • tighter the better</p>	<h3>Short Stroke</h3>  <p>BP • secondary BP • closes within 1% • vol drops • tighter the better</p>
<h3>Handles</h3>  <p>BP 5 day min >15% bull >30% bear</p>	<h3>Pullback</h3>  <p>Previous breakout Buy range Lower volume 50 dma • Must rebuy here after shake out & rebound on higher vol (IBM 1926) • Can add first 2 times it pulls back to 50dma</p>	<h3>Misc Rules</h3> <ul style="list-style-type: none"> • all BP +10 cents • ideal prior uptrend >30% • for wks abv avg vol: #up>#down • up 20% for new base • undercut base resets base count • 66% of 3rd stage base fails • 80% of 4th stage base fails • in base bottom look for: <ul style="list-style-type: none"> • shakeout • tight closes • volume dryout • accumulation



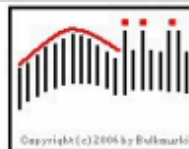
[Cup with handle inverted](#)



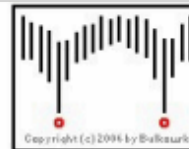
[Diamond bottoms](#)



[Diamond tops](#)



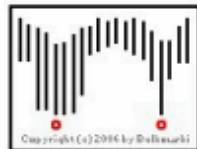
[Domed house and three peaks](#)



[Double bottoms Adam & Adam](#)



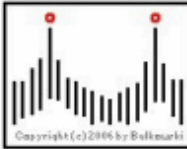
[Double bottoms Adam & Eve](#)



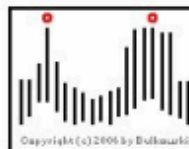
[Double bottoms Eve & Adam](#)



[Double bottoms Eve & Eve](#)



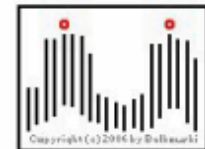
[Double tops Adam & Adam](#)



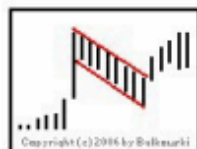
[Double tops Adam & Eve](#)



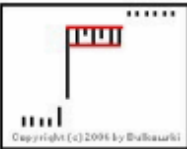
[Double tops Eve & Adam](#)



[Double tops Eve & Eve](#)



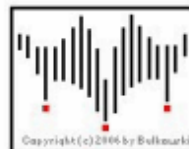
[Flags](#)



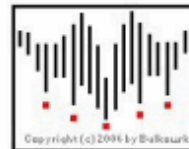
[Flag high and tight](#)



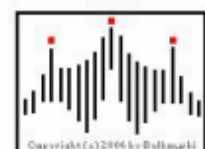
[Gaps](#)



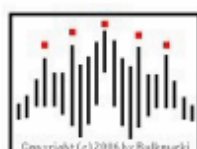
[Head-and-shoulders bottoms](#)



[Head-and-shoulders complex bottoms](#)



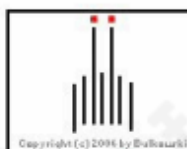
[Head-and-shoulders tops](#)



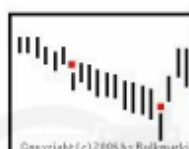
[Head-and-shoulders complex tops](#)



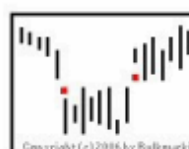
[Horn bottoms](#)



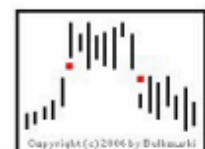
[Horn tops](#)



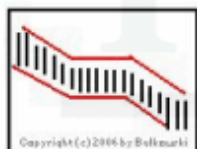
[Island long](#)



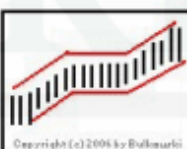
[Island reversal bottom](#)



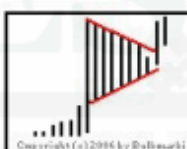
[Island reversal top](#)



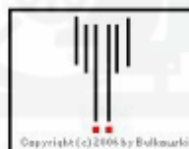
[Measured move down](#)



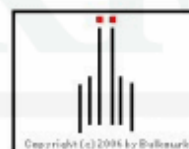
[Measured move up](#)



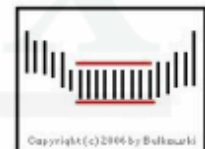
[Pennants](#)



[Pipe bottoms](#)



[Pipe tops](#)



[Rectangle bottoms](#)



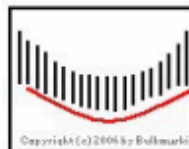
[Rectangle tops](#)



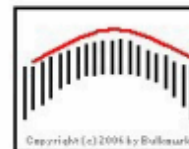
[Roof](#)



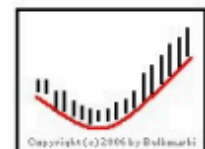
[Roof inverted](#)



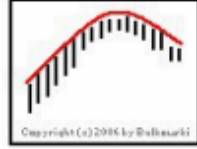
[Rounding bottoms](#)



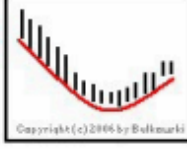
[Rounding tops](#)



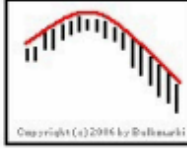
[Scallops ascending](#)



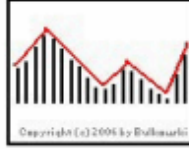
[Scallops ascending and inverted](#)



[Scallops descending](#)



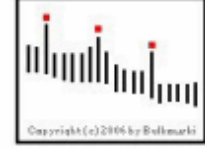
[Scallops descending and inverted](#)



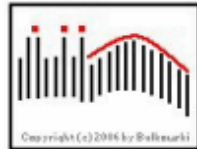
[Simple ABC Correction](#)



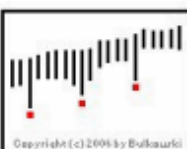
[Spikes or Tails](#)



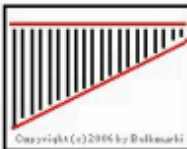
[Three falling peaks](#)



[Three peaks and three rising valleys](#)



[Three rising valleys](#)



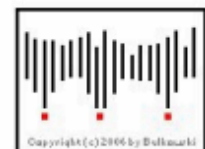
[Triangle ascending](#)



[Triangle descending](#)



[Triangle symmetrical](#)



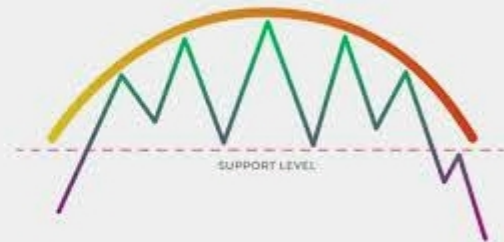
[Triple bottoms](#)



ROUNDING PATTERNS



ROUNDING BOTTOM



ROUNDING TOP

CUP AND HANDLE PATTERNS



CUP AND HANDLE



INVERSE CUP AND HANDLE

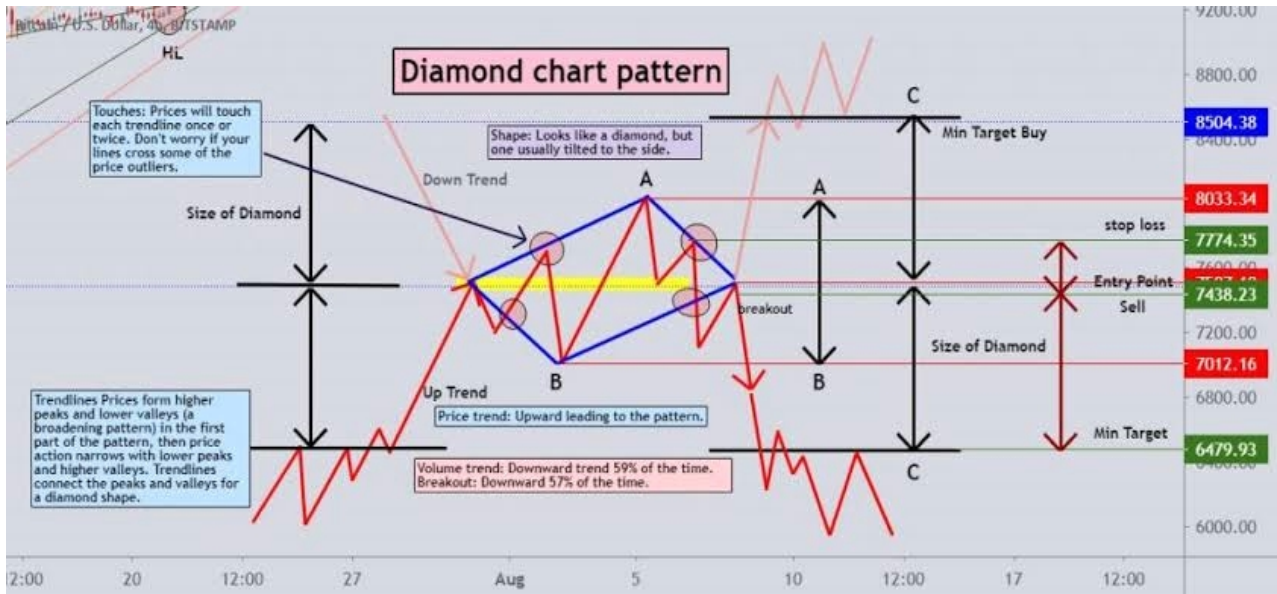
DIAMOND CHART PATTERNS

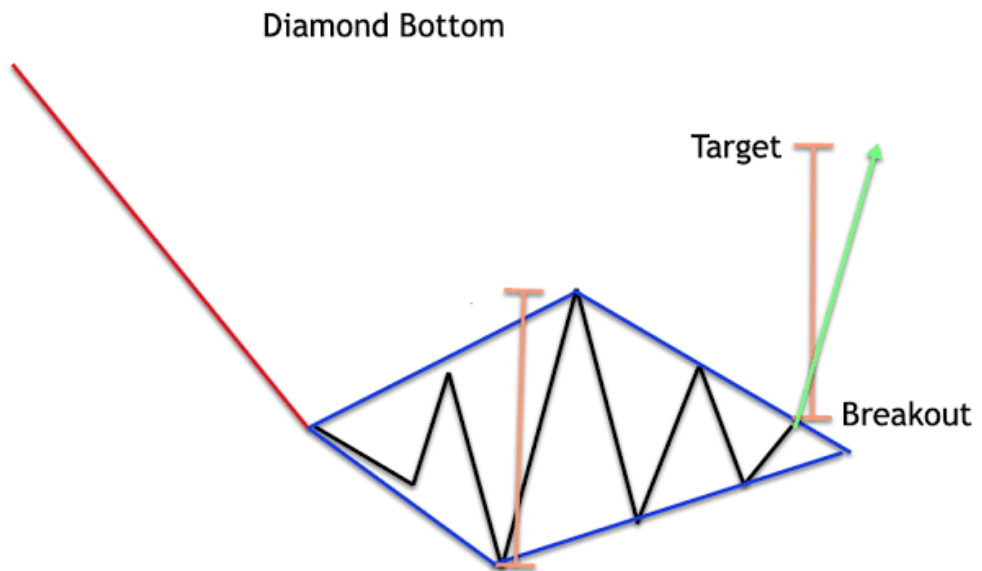
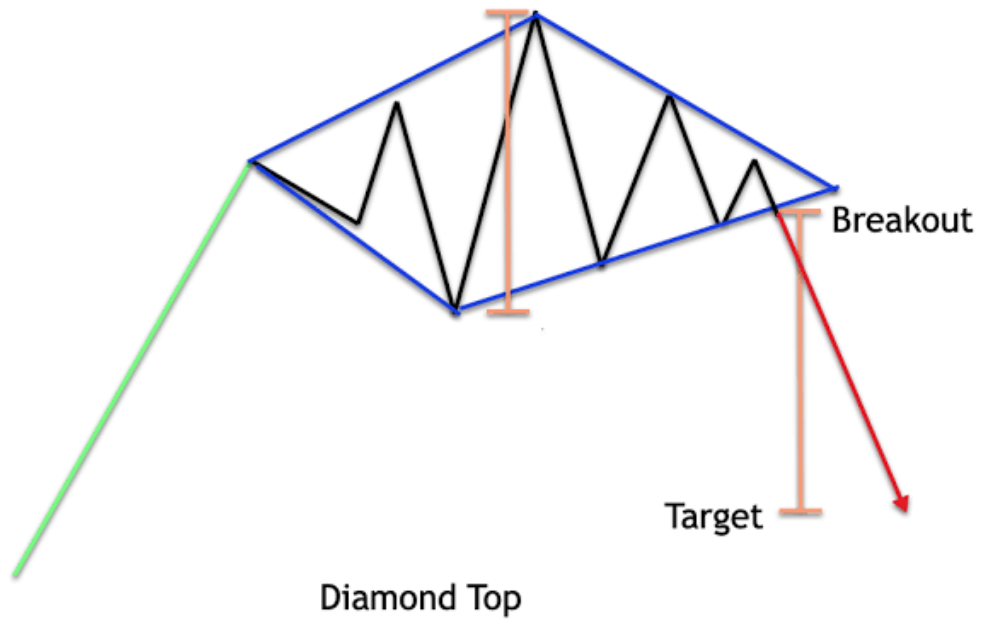


BULLISH DIAMOND PATTERN



BEARISH DIAMOND PATTERN









Warning !!!

Because the world of trading is a world of Fugazy, fugazi, which is not real and full of the magic of uncertainty, then there must be candlestick patterns that do not match the theory and do not match expectations

Peringatan !!!

karena dunia trading adalah dunia Fugazy, fugazi yang tidak nyata dan penuh keajaiban ketidakpastian, maka pasti ada pola candlestick yang tidak sesuai teori dan tidak sesuai ekspektasi

!!! تحذير

وهو ليس حقيقياً ومليئاً بسحر عدم ، Fugazy ، fugazi لأن عالم التداول هو عالم اليقين ، فلا بد من وجود أنماط شمعدان لا تتطابق مع النظرية ولا تتطابق مع التوقعات



It's all a fugazi,
it ain't real

