

Renkin

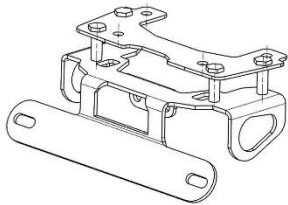
INSTALLATION MANUAL YAMAHA MT-09/FZ-09 2017+

INCLUDED IN KIT:

TAIL TIDY BRACKET
BODY MOUNT BRACKET
AXLE BLOCK
2 X INDICATOR SPACERS
4 X 20MM M6 SPACERS
4 X 8MM M6 SPACERS
4 X M6 NYLOC NUTS
4 X M6 WASHERS
4 X 35MM M6 BOLTS
2 X 12MM M5 SCREWS
2 X M5 WASHERS

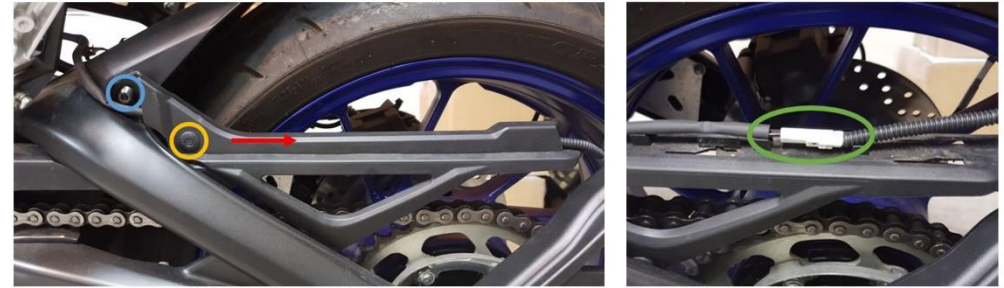
TOOLS REQUIRED:

5 AND 4MM ALLEN KEY
27, 10 AND 8MM SOCKET
PHILLIPS HEAD SCREWDRIVER



SECTION 1: REMOVE OEM FENDER AND INDICATORS

STEP 1: Remove Chain Guard Cover



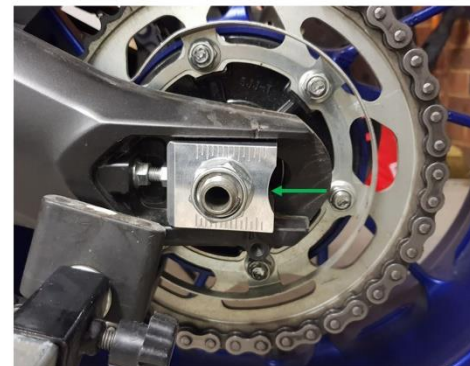
- 5mm Allen Bolt
- Slide cover rearward to remove
- Plastic Rivet (push centre to release)
- Unplug licence plate light

STEP 2: Remove OEM Fender



- i** It is advised but not necessary to do this step on a paddock stand
- Remove axle nut 1 x 27mm Nut
- i** To remove the OEM Fender the chain tension may need to be loosened

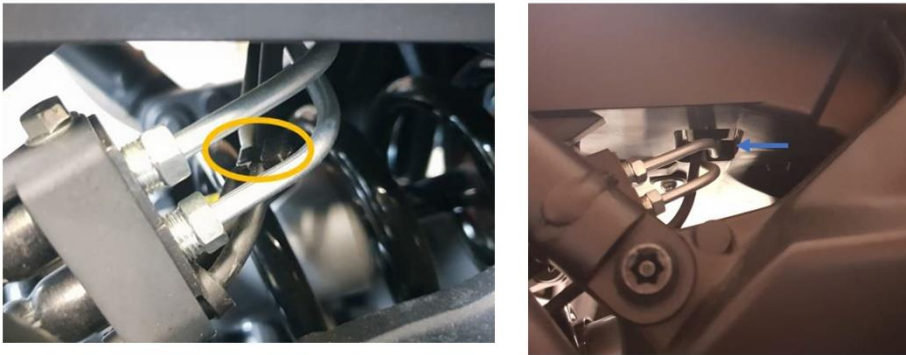
STEP 3: Install Supplied Axle Block



- Position semi-circle cut out facing rear of bike

STEP 4: Remove Seat (Key Hole on Underside of Bike)

STEP 5: Re-route Licence Plate Light Cable



- Cut cable ties
- Feed cable through hole on underside of bike near fuel tank
- Route cable along main harness toward rear of bike

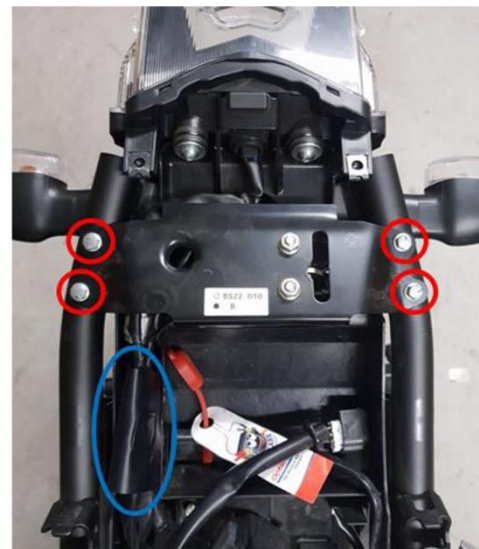
2

STEP 6: Remove Side Covers



- 7 x Plastic rivets
- 8 x 4mm Allen bolts
- Slide side covers towards rear to remove
- ⚠ Be cautious when removing the side covers, there are tabs attached to the brake light which can break easily

STEP 7: Remove Latch Plate and Unplug Indicator Connectors



- 4 x 8mm Hex bolts
- Indicator connectors are hidden inside of black sleeve

3

STEP 8: Remove Under Tray



- 2 x 4mm Allen bolts

STEP 9: Remove Indicator Bracket



- 4 x 10mm Nuts/Bolts
- ⓘ Set aside fasteners for later use
- ⚠ Removing these bolts also undoes the brake light

STEP 10: Disassemble Indicator Bracket



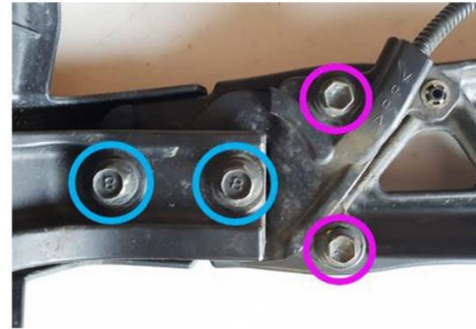
- 2 x Phillips Screws
- Lift side tab to free retaining plate
- ⓘ Remove indicators from housing. If having difficulty, apply a small amount of oil

SECTION 2: OEM FENDER DISASSEMBLY

STEP 1: Remove Number Plate

- ⓘ Fastener size will vary depending on the dealer

STEP 2: Remove Metal Arm



- 2 x 10mm Hex bolts
- 2 x 8mm Hex bolts
- ⓘ Cut all cable ties along length of licence plate light wire

STEP 3: Separate Plastic Shell from Supporting Bracket



- 4 x 4mm Allen bolts
- 2 x Plastic rivets

STEP 4: Remove Licence Plate Light Housing



- 1 x 8mm Nut (remove red reflector after)
- Push plastic tabs to release licence plate light housing

STEP5: Remove Licence Plate Light



- 2 x 8mm Bolts



- Make sure the J-Nuts are still attached to the light

SECTION 3: ASSEMBLE RENKIN TAIL TIDY

STEP1: Fit Licence Plate Light to Tail Tidy Bracket



- Use supplied M5 screws and washers

STEP2: Fit Indicators to Tail Tidy Bracket



- Fit supplied spacer to indicator
- Fit indicator to tail tidy bracket and secure with original retaining plate

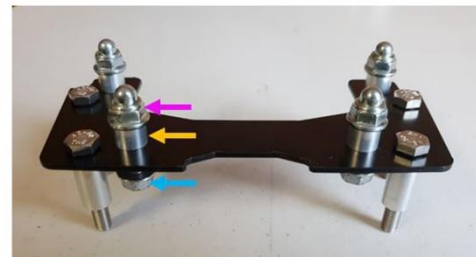


STEP3: Cable Management

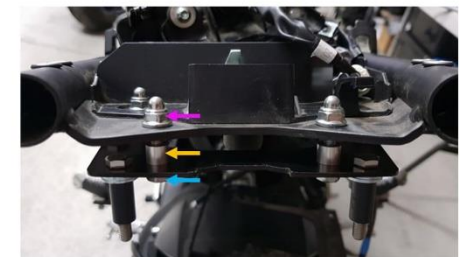


- Feed indicator and licence plate light cables through rectangular holes on tail tidy

STEP4: Fit Body Mount Bracket to Bike



- Nut from Section 1 Step 9
- Supplied 8mm spacer
- Bolt from Section 1 Step 9



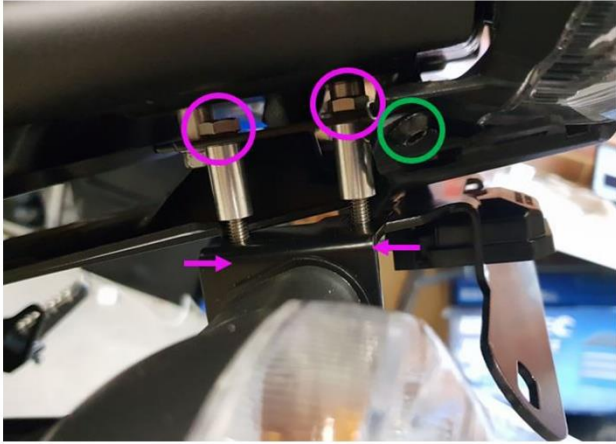
- After fitting the body mount bracket, re-install the brake light using the two most rear bolts. Tighten all four bolts once brake light is fitted

STEP5: Pre-Position Tail Tidy Bracket and Under Tray



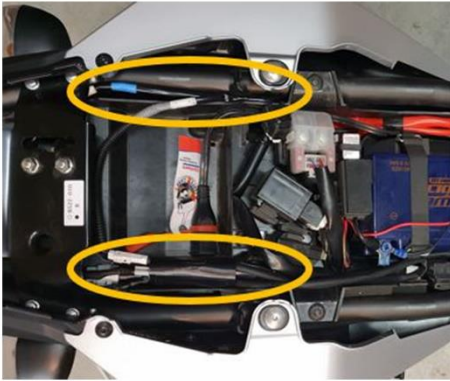
- Position under tray on top of the tail tidy and align cables through side cutouts on under tray
- Feed cables into hole between bike frame and brake light

STEP6: Fit Tail Tidy to Body Mount Bracket



- i** Lift both the under tray and tail tidy bracket to align with mounting points whilst feeding cables into body of bike
- Secure under tray using original 2 x 4mm Allen bolts
- Secure tail tidy bracket to body mount bracket using supplied 4 x 10mm Hex nuts and bolts

STEP7: Re-Connect Lights



- The extra cable length can be tucked along the sides of the storage tray and frame

STEP8: Re-Install Latch Plate, Side Covers and Seat

- i** Use original fasteners

INSTALLATION COMPLETE!