



*COLLECTION*  
*2016*



ABBREY PLACE



# THE VESPA SIDE

When Vespa and the city meet, amazing things happen.



## A UNIQUE STORY

The Vespa is a timeless icon of Italian style, unfettered by the whims of fashion. With its unique design and technological content, it has been a symbol for 70 years, instantly recognisable and always surprising. Much more than a simple scooter, the Vespa is the companion of countless adventures, a reflection of the rider's personality, a celebration of design, technology and independence. An inspiration for freedom for generations, it combines elegance, daring and style, bringing a touch of unpredictability to our lives.

Vespa.

The classy, irreverent side of light mobility.



# DO YOU VESPA?

## *FREEDOM AND DREAMS TRAVEL FAST*

For almost seventy years, the Vespa has been conquering hearts and minds thanks to its message of freedom and an out-of-the-box communication style that has secured it a place in our collective imagination. In its colourful history, the Vespa has been on the front line of cultural and social revolutions, new trends in music and lifestyles, movies, art. It has survived the whims of fashion intact and today, in the age of digital social communication, it has an immediate impact all over the world, extending beyond barriers, the icon of a unique design and the values of environmental sustainability and independence.

*Vespa*<sup>®</sup>



## ***HUNDREDS OF EMOTIONS***

The first truly global mobility brand, the Vespa bridges the generations, interacting with vastly different social environments and creating a variety of cultural phenomena, specific to the communities in which its success has made it a distinguishing characteristic. It has spearheaded lifestyle, music and youth revolutions. It is the core of high-profile public events like Vespa World Days. And today it is one of the best-selling and best-known Italian products in every corner of the globe.

**Vespa**<sup>®</sup>





## ***AN ANNIVERSARY TO CELEBRATE IN STYLE***

An authentically irreverent and unconventional icon, the Vespa doesn't need to worry about showing its age. When you've been on the crest of the wave since 1946, 70 successful years are a milestone worth celebrating.

Geared to the tastes of the younger generations and their constantly evolving style preferences, the Vespa has always been a driver of innovation and non-conformist aesthetics. Decade after decade, this scooter has fanned the flame of independence of each new generation.

The seventieth anniversary of this unique adventure is the opportunity to offer new ideas and new products for admirers all over the world: a special logo identifying the various initiatives and three special vehicles celebrating the different souls of the Vespa with the latest Piaggio technology.



**GTS**  
300 ABS-ASR



**PRIMAVERA**  
50 / 125 / 150



**PX**  
125 / 150



**GTS**  
**TOURING**

**300 ABS-ASR**

● GRIGIO SETA



**PRIMAVERA**  
**TOURING**

**50 / 125 / 150**

● GRIGIO SETA



**PX**  
**TOURING**

**125 / 150**

● GRIGIO SETA



**TOURING COLLECTION**



**TOURING COLLECTION**



**SPORT COLLECTION**

## **GTS SUPERSPORT**

**125 ABS-ASR  
300 ABS-ASR**

● GRIGIO TITANIO



## **SPRINT S**

**50 2T / 125 ABS  
150 ABS**

● GRIGIO TITANIO



**SPORT COLLECTION**





- GRIGIO DOLOMITI
- BLU MIDNIGHT
- NERO VULCANO



## **VESPA GTS 300 ABS-ASR**

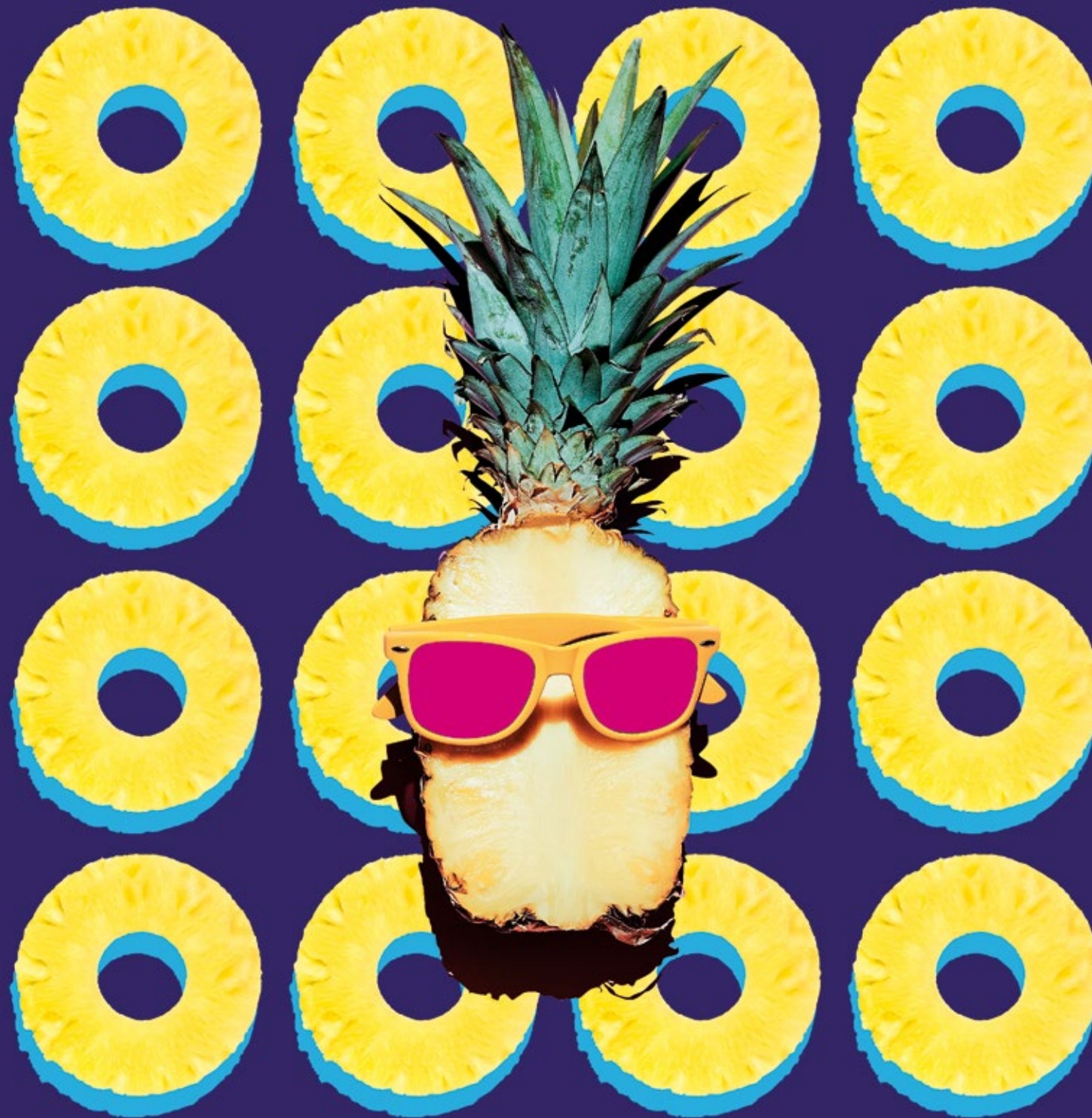
Maximum power and elegance: the Vespa GTS has no equals on the market. The 300 cc engine, the most powerful in the entire Vespa range, is combined with a front- and rear-disk braking system with ABS and ASR for absolute riding safety. The scooter's exuberance is softened by smart lines, a sophisticated range of colours and advanced style solutions: LED daytime running lights, new front cowl, new saddle, new rear light, new analogue and digital instrument panel, a USB port.



- NERO LUCIDO
- ROSSO DRAGON
- MONTEBIANCO
- BLU GAIOLA

## **VESPA GTS SUPER** 125 / 300

The GTS Super is the Vespa at its most dynamic. A vehicle where the Vespa design is enhanced with sporty details like the signature grill on the right flank, the black wheel rims, the special front cowl, the analogue and digital instrument panel with red backlighting, the USB port. The sparky 125 cc engine and the powerful 300 cc engine ensure the best-ever performance from a Vespa.





- MARRONE  
CRETE SENESI
- MONTEBIANCO
- BLU MIDNIGHT
- NERO VULCANO
- ROSSO DRAGON

## **VESPA PRIMAVERA** 50 / 125 3V / 150 3V

The Vespa Primavera stands out for its modern streamlined look, whose key elements echo the exclusive style of the "Vespa 946". Hallmark features include the new frame with innovative features for enhanced quality. The increased space between the handlebars and the seat, and the saddle height for easier access to the ground, ensure greater comfort for rider and passenger. The longer wheelbase and length boost stability while maintaining the lightweight riding and agility typical of every Vespa. The compartment beneath the seat easily accommodates a full-jet helmet. LED daylights and rear light, new digital instrument panel with trip computer, 2-stroke and 4-stroke 4V 50 cc engines, 4-stroke 3V electronic injection 125 and 150 cc engines improve fuel consumption and reduce emissions.

- GIALLO POSITANO
- BLU GAIOLA
- MONTEBIANCO
- NERO LUCIDO
- ROSSO DRAGON



## VESPA SPRINT 50 / 125 3V

In a hectic world, you need a strong personality to get noticed and make your mark. The Vespa Sprint has the charisma of the Vespa tradition, a world style icon and symbol of an Italian lifestyle built on elegance and joie de vivre. The distinctive design that secured the success of the Vespa range has been restyled for today in the Vespa Sprint, which carries on the Vespa S heritage and leads the way in “small body” two-wheelers. Fluid lines and compact dimensions, together with attention to detail make for a scooter that is easy to handle, gutsy and fearless in city traffic.





- ROSSO DRAGON
- NERO LUCIDO
- MONTEBIANCO



## **VESPA PX** 125 / 150

The model closest to the legendary original Vespa, the PX has captured millions of hearts with its unrivalled ability to combine essentiality and appeal, practicality and retro charm. Minimal design, ease of use and the exceptional sturdiness of a steel frame, the PX is fitted with an indestructible 2-stroke engine and also retains a number of original features Vespa lovers will find irresistible, such as the four-gear manual shift on the handlebar and room for a spare wheel. Distinguishing marks include the comfortable seat, the footrest with the Vespa logo and the vintage-look front cowl.



	<b>Primavera Primavera Touring Primavera 70° 50 4T4V (50 2T)*</b>	<b>Primavera Primavera Touring Primavera 70° 150 3V (125 3V)*</b>	<b>Sprint 50 4T4V (50 2T)* Sprint S (50 2T)*</b>	<b>Sprint 125 3V Sprint S 125 3V (150 3V)*</b>	<b>GTS GTS Touring GTS 70° 300</b>	<b>GTS Super 300 (125 ie)* GTS SuperSport 300 (125)*</b>	<b>PX PX Touring PX 70° 150 (125)*</b>
<i>Engine</i>	HiPER 4-stroke 4V single cylinder, catalytic (Hi-PER 2-stroke catalytic)	4-stroke 3-valve single cylinder, catalytic	HiPER 4-stroke 4V single cylinder, catalytic (Hi-PER 2-stroke catalytic)	4-stroke 3-valve single cylinder, catalytic	4-stroke 4-valve single cylinder, electronic injection, catalytic	4-stroke 4-valve single cylinder, electronic injection, catalytic	2-stroke single cylinder, catalytic
<i>Engine capacity</i>	49.9 cc (49 cc)	154,8 cc (124,5 cc)	49.9 cc (49 cc)	124.5 cc (154.8 cc)	278 cc	278 cc (124 cc)	150 cc (123 cc)
<i>Bore x Stroke</i>	39 mm x 41.8 mm (40 mm x 39.3 mm)	58 mm x 58.6 mm (52 mm x 58.6 mm)	39 mm x 41.8 mm (40 mm x 39.3 mm)	52 mm x 58.6 mm (58 mm x 58.6 mm)	75 mm x 63 mm	75 mm x 63 mm (57 mm x 48.6 mm)	57.8 mm x 57 mm (52.5 mm x 57 mm)
<i>Max. power</i>	-	9.5 kW -12.9 CV- a 7,750 rpm (7.9 kW -10.7 CV- a 7,700 rpm)	-	7.9 kW -10.7 CV- a 7,700 rpm (9.5 kW -12.9 CV- a 7,750 rpm)	15.8 kW -22 CV- a 7,500 rpm	15.8 kW -22 CV- a 7,500 rpm (11 kW -15 CV- a 9,750 rpm)	5.8 kW -7.9 CV- a 6,000 rpm (4.8 kW -6.5 CV- a 6,000 rpm)
<i>Max. torque</i>	-	12.8 Nm a 6,500 rpm (10.4 Nm a 6,000 rpm)	-	10.4 Nm a 6,000 rpm (12.8 Nm a 6,500 rpm)	22.3 Nm a 5,000 rpm	22.3 Nm a 5,000 rpm (12 Nm a 7,500 rpm)	11.2 Nm a 4,000 rpm (9.5 Nm a 4,250 rpm)
<i>Fuel</i>	Carburettor	Electronic injection	Carburettor	Electronic injection	Electronic injection	Electronic injection	Carburettor
<i>Cooling</i>	Forced air	Forced air	Forced air	Forced air	Liquid	Liquid	Forced air
<i>Starter</i>	Electric and kick starter	Electric	Electric and kick starter	Electric	Electric	Electric	Electric and kick starter
<i>Gearbox</i>	HPT with torque server	HPT with torque server	HPT with torque server	HPT with torque server	HPT with torque server	HPT with torque server	Manual, 4 gears
<i>Clutch</i>	Automatic centrifugal dry, with damper pads	Automatic centrifugal dry, with damper pads	Automatic centrifugal dry, with damper pads	Automatic centrifugal dry, with damper pads	Automatic centrifugal dry, with damper pads	Automatic centrifugal dry, with damper pads	Multi-disk wet
<i>Bearing structure</i>	Steel frame with welded structural reinforcements	Steel frame with welded structural reinforcements	Steel frame with welded structural reinforcements	Steel frame with welded structural reinforcements	Steel frame with welded structural reinforcements	Steel frame with welded structural reinforcements	Steel frame
<i>Front suspension</i>	Single arm with coil spring and hydraulic shock absorber	Single arm with coil spring and hydraulic shock absorber	Single arm with coil spring and hydraulic shock absorber	Single arm with coil spring and hydraulic shock absorber	Single-arm ESS suspension with coil spring and hydraulic shock absorber	Single-arm ESS suspension with coil spring and hydraulic shock absorber	Single arm with coil spring and hydraulic shock absorber
<i>Rear suspension</i>	Coil spring with single shock absorber	Adjustable spring pre-loading (4 positions) and single hydraulic shock absorber	Coil spring with single shock absorber	Adjustable spring pre-loading (4 positions) and single hydraulic shock absorber	Dual hydraulic shock absorber, with adjustable spring pre-loading, 4 positions	Dual hydraulic shock absorber, with adjustable spring pre-loading, 4 positions	Coil spring with single shock absorber
<i>Front brake</i>	Hydraulically controlled Ø 200 mm stainless steel disk	Hydraulically controlled Ø 220 mm stainless steel disk	Hydraulically controlled Ø 200 mm stainless steel disk	Hydraulically controlled Ø 200 mm stainless steel disk	Hydraulically controlled Ø 220 mm stainless steel disk	Hydraulically controlled Ø 220 mm stainless steel disk	Hydraulically controlled Ø 200 mm stainless steel disk
<i>Rear brake</i>	Mechanically controlled Ø 140 mm drum (Ø 110 mm drum)	Mechanically controlled Ø 140 mm drum	Mechanically controlled Ø 140 mm drum (Ø 110 mm drum)	Mechanically controlled Ø 140 mm drum	Hydraulically controlled Ø 220 mm stainless steel disk	Hydraulically controlled Ø 220 mm stainless steel disk	Mechanically controlled Ø 150 mm drum
<i>ABS/ASR</i>	-	Version available with ABS, not available on Touring version	-	Version available with ABS, standard on S version	Standard	Version available with ABS/ASR, standard on Supersport version	-
<i>Front tyre</i>	Tubeless 110/70 - 11"	Tubeless 110/70 - 11"	Tubeless 110/70 - 11"	Tubeless 110/70 - 12"	Tubeless 120/70 - 12"	Tubeless 120/70 - 12"	Tubeless 3.50 - 10"
<i>Rear tyre</i>	Tubeless 120/70 - 11"	Tubeless 120/70 - 11"	Tubeless 120/70 - 11"	Tubeless 120/70 - 12"	Tubeless 130/70 - 12"	Tubeless 130/70 - 12"	Tubeless 3.50 - 10"
<i>Length / Width / Wheelbase</i>	1,860 / 735 / 1,340 mm	1,860 / 735 / 1,340 mm	1,860 / 735 / 1,340 mm	1,860 / 735 / 1,340 mm	1,930 / 755 / 1,370 mm	1,930 / 755 / 1,370 mm	1,780 / 745 / 1,250 mm
<i>Saddle height</i>	780 mm	780 mm	790 mm	790 mm	790 mm	790 mm	805 mm
<i>Fuel tank capacity</i>	7 liters	8 liters	7 liters	8 liters	9.5 liters	9.5 liters	8 liters



Vehicles with 50 cc engine capacity are EU-approved eco-sustainable vehicles, which comply with the Euro 2 atmospheric and acoustic pollution limits. The two-stroke and four-stroke 4V 50 cc vehicles are approved to carry a passenger. Refer to the local Highway Code and the vehicle documents for use of the vehicles with a passenger.



Vehicles with more than 50 cc engine capacity are EU-approved eco-sustainable vehicles, which comply with the Euro 3 atmospheric and acoustic pollution limits.

The company reserves the right to make technical and aesthetic changes at any time. Ride carefully and always wear a crash helmet and suitable clothing. Comply with the Highway Code and environmental regulations. Read the user and maintenance handbook carefully. Always ask for type-approved original spare parts. Apply to Vespa Official Dealers and authorised sales outlets for a sure purchase and guaranteed assistance. Vespa original spare parts are a guarantee of quality and ensure consistent vehicle performance.

\*(the data for these versions are shown in brackets when different)



Vespa is a registered trademark of Piaggio & C. S.p.A.



WWW.VESPA.COM



FOR CHILDREN

A BETTER LIFE FOR THE  
CHILDREN OF THE WORLD