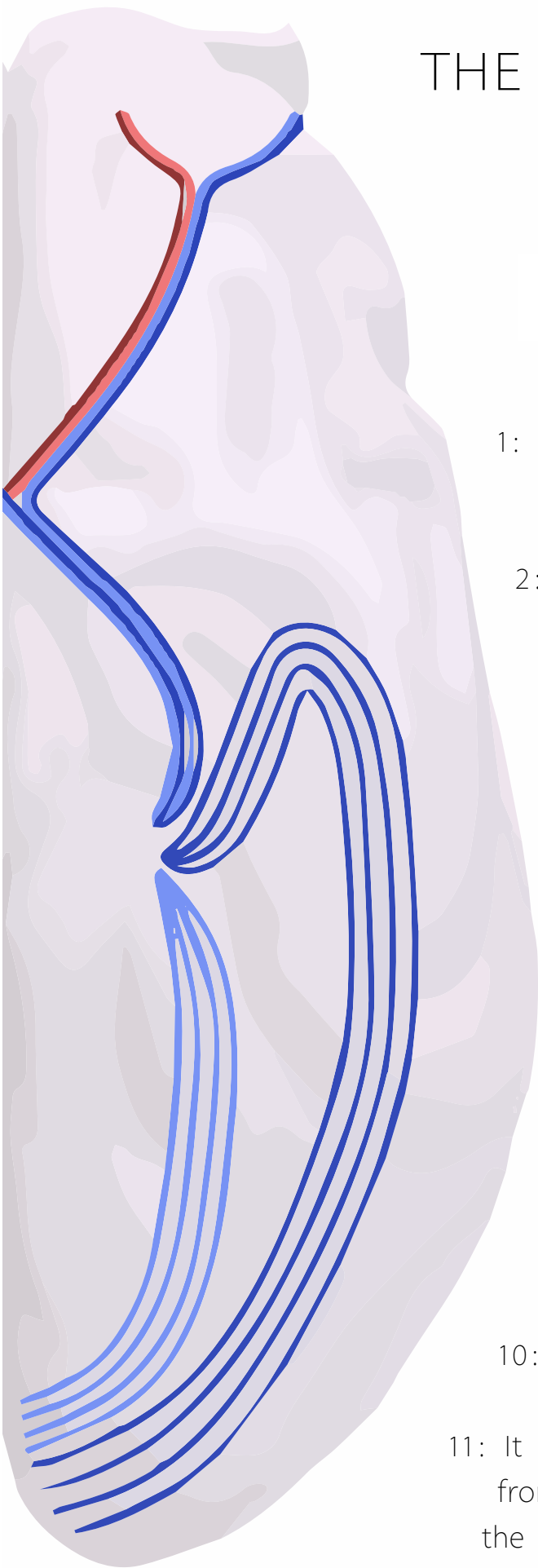


THE OPTIC PATHWAY & VISUAL FIELD DEFECTS

SELF TEST ANSWER SHEET



1: It is refracted by the biconvex lens to invert and reverse the image

2: Optic radiation

3: Baum's loop

4: Unilateral lesion of the optic nerve

5: Right

6: Occipital visual cortex

7: Contralateral Superior Quadrantanopia

8: Lateral Geniculate Nucleus (LGN)

9: Superior and inferior temporal quadrants of each eye

10: Optic tract

11: It causes partial blindness where vision is missing from the inferior quadrant of the visual field from the same side of each eye