

Easy Pow'Air Technology

VENTILATORS
ELECTRIC, WATER AND GASOLINE DRIVEN

- Straight stream air flow
- Position at any distance
- Powerful & Compact
- Easier to use

LEADER

Tomorrow's technology today

HIGH-PERFORMANCE, ROBUST, COMPACT AND EASY-TO-USE

Easy Pow'Air Technology

Designed with the operator's safety in mind

Durable blades made of reinforced composite resin

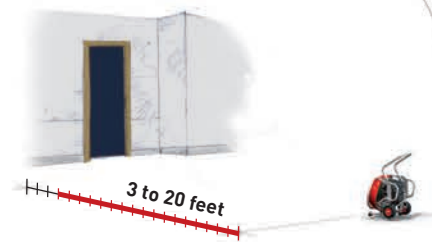
External protection of the shroud made of flexible resin compound

Direct drive fan for durability

Safety cradle around the assembly. Easy attachment of foam equipment.

The five advantages that make the difference

Total effectiveness between 3 and 20 feet distance. Easy Pow'Air fans give attack crews much more room for maneuvering.



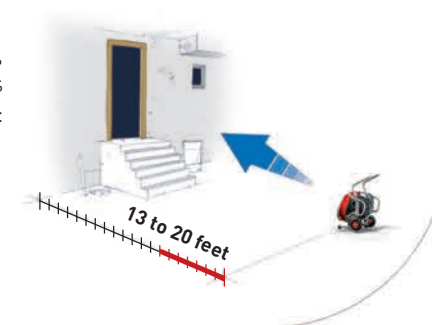
Low noise level for fire-crews as the fan is further away. Decrease is 4dB per 6.5 feet distance.

Unequalled performances validated by tests made according to AMCA 240 standard.

Automatic tilt: when raised, the carrying handle automatically positions the fan to optimal tilt. Fine adjustment of the tilt angle between +10° and +20° is also possible.

Ventilating of landings made easy. The possibility of moving the fan back, combined with maximum tilt, makes ventilation possible in special situations:

- Raised doorways and high windows
- Entries with steps
- Landings



Robust chassis (metal tube, diameter 1.2 inch)



Full metal shroud with outer shell



Compact size, for easy vehicle storage



Tilt positioning accessory to adjust the angle down at -10° (optional)



Puncture-proof, large diameter wheels

Anti-debris rear grill to prevent foreign bodies being inducted

High-resistance front grill

Stabilizing feet sized to minimize vibration and ensure the fan stability



Products designed and manufactured by LEADER

6-year warranty, parts and labor

FIRE FIGHTING

Easy Pow'Air GASOLINE DRIVEN

MODEL	OPEN AIR CFM***	AMCA AIRFLOW	RUNNING TIME	ENGINE	SIZE* (inch)	DIMENSIONS (W x H x D - inch)	WEIGHT (lbd.)	REFERENCE
MT 225	18,423	•	1h40	GX 120 = 4 hp (3.5 hp)	18	21.65 x 22.44 x 17.32	63.9	160.10.054
MT 236	26,129	17,671	2h10	GX 160 = 5.5 hp (4.8 hp)	18	21.65 x 21.65 x 19.29	92.6	160.10.057
MT 240	29,224	20,272	2h00	GX 200 = 6.5 hp (5.5 hp)	18	21.65 x 21.65 x 19.29	94.8	160.10.060
MT 245	30,135	22,425	2h00	GX 200 = 6.5 hp (5.5 hp)	24	28.35 x 28.35 x 24.41	114.6	160.10.051
MT 260	42,260	24,768	2h00	GX 270 = 9 hp (8.4 hp)	24	28.35 x 28.35 x 24.41	141.1	160.10.055
MT 280	50,147	•	1h20	GX 390 = 13 hp (11.7 hp)	24	28.35 x 28.35 x 24.41	152.1	160.10.048

* Inlet size

▶ 2 engine powers indicated:
 • 1st power SAE J 607 before 2007
 • 2nd power SAE J 1349 since 2007

HONDA GX Engine
 for all LEADER Easy Pow'Air gasoline driven fans



SERIES

MT 225 Model



MT 236, MT 240, EDS 230, EVS 230 and MH 236 Models



MT 245, MT 260, MT 280, and MH 260 Models



Easy Pow'Air Technology

UNEQUALLED PERFORMANCE

Developed and measured in our Test Center and validated via tests complying with the AMCA 240 standard. See www.leadernorthamerica.com



Easy Pow'Air ELECTRIC (115 V / 60 Hz)

MODEL	OPEN AIR CFM***	AMCA AIRFLOW	MOTOR	SIZE* (in, ch)	DIMENSIONS (W x H x D - inch)	WEIGHT (lbd.)	REFERENCE
EDS 230	14,203	12,107	1.5 hp single speed	18	21.65 x 21.65 x 19.29	77.5	163.10.032
EDS 230-2**	16,050	13,658	2 hp single speed	18	21.65 x 21.65 x 19.29	86	163.10.033
EVS 230	14,254	12,157	1.5 hp with variable speed drive	18	21.65 x 21.65 x 19.29	79.8	163.10.031

** Requires a 20 Amp breaker. * Inlet size



Ideal back-up ventilation for firefighter protection
SR 460 Relay Auxiliary Ventilation

MODEL	OPEN AIR CFM***	MOTOR	SIZE* (inch)	DIMENSIONS (W x H x D - inch)	WEIGHT (lbd.)	REFERENCE
SR 460	6,504	0.5 hp with variable speed drive	16	22.5 x 21.25 x 16.60	37.4	163.00.018



Easy Pow'Air WATER DRIVEN

MODEL	OPEN AIR CFM***	MOTOR (Brass)	SIZE* (inch)	DIMENSIONS (W x H x D - inch)	WEIGHT (lbd.)	REFERENCE (NHT - fittings)
MH 236	24,432	9 hp water motor	18	21.65 x 21.65 x 19.29	86	in 1.5" F / out 2" M: 161.00.030
MH 260	30,615	9 hp water motor	24	28.35 x 28.35 x 24.41	113	in 1.5" F / out 2" M: 161.00.031

- Maximum water flowrate: 163 gpm.
- Maximum water pressure: 150 PSI.
- Mister attachment as standard.

* Inlet size

*** The airflows given were achieved in the open air, and the weights are when the tank is empty. Running times are given as an indication and may vary depending on the conditions of use. CFM = Cubic Feet per Minute.



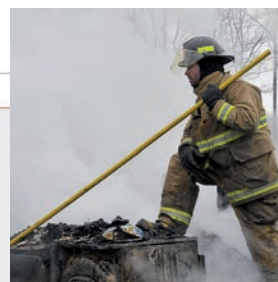


INSULATED telescopic PIKE-POLE

Extendable, fiberglass **pike-pole**, insulated to resist up to **20 000 volts**. Can be locked at any length.

Diameter: 1.5 inch.
Length: Closed 7.2 feet / Fully extended 12.65 feet
Weight: 6.6 lbs.

Ref: **020.00.115**



FOAM ADAPTER

Transforms the fan into a **high-expansion foam generator**. Attaches in seconds!

Operates with a traditional in line 43 gpm inductor.
Expansion ratio from 400 to 800.

Adapter Ref: **160.20.105** (Accepts 1.5" NST Male hose) for: MT225 / EDS 230 / EVS 230 / MT 236 / MH 236 models.

Adapter Ref: **160.20.116** (Accepts 1.5" NST Male hose) for: MT 245 / MT 260 / MH 260 models.



MISTER

This option offers the possibility of **faster, more effective cooling**.

Flow-rate 3.5 gpm at 7 bar. Inlet accepts 1.5" NST Female hose
Mister for EDS 230 / EVS 230 / MT 236 / MT 245 / MT 260: Ref: **160.20.104**



EXHAUST EXTENSION

Complies with DIN 14-572 standard. Allows exhaust gases to be vented outside the area where the fan is operating or away from the fan's air suction zone, limits the induction of gases such as CO. Several can be connected together to extend.

Length: 8.2 feet | Ref: **160.20.012**
Diameter: 2 inch



HOUR METER / TACHOMETER

Displays the engine's rotation speed and the number of hours the equipment has been in operation (only with gas driven fans). Ref: **2002040**



'DOOR-BLOCK' WEDGE

Can be placed in different positions on a door so as to keep it open
Ref: **160.20.112**



PROTECTIVE COVER

Cover for 230/236 models:

Ref: **160.20.017**

Cover for 245/260/280 models:

Ref: **160.20.097**



PROP FOR DOWNWARD VENTILATION

This option makes it possible to tilt the fan down [-10°] for ventilation of semi-basements.

Weight: 1.1 lbs.
Stainless steel tubing

◀ Ref: **160.20.108** for models : 245, 260 and 280

Ref: **160.20.130** for models : 230 and 236 ▶



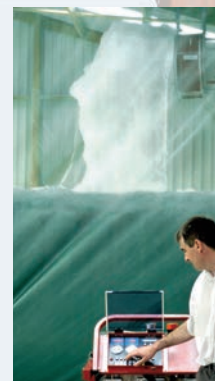
LEADER

RESEARCH AND DEVELOPMENT

A creative but meticulous Design Department to develop the equipment you will need tomorrow.



- > A **multidisciplinary design staff** to develop and produce innovative equipment to meet the **needs of the profession**.
- > Design work carried out in **partnership** with **well-known fire departments, industries, universities and research laboratories**.
- > **Testing equipment** specifically adapted to the needs of product development and **performance validation**:
 - Water and high expansion foam test installation (4,300 ft²)
 - Ventilation test installation (4,300 ft²)



MANUFACTURE



- > **Specialized production workshops**.
- > A **continuous improvement** organization whose purpose is to guarantee customer satisfaction through **control of product conformity**.

AFTER-SALES SERVICE



- > A **permanent stock** of spare parts enabling to carry out **rapid repair work**.
- > A team to **advise** you on **setting up and using** your equipment.
- > A **telephone help line 800-358-6414**

TRAINING

- > Can be **organized to suit your needs**. Our **training courses** enable you to maintain your equipment in a **safe state for use**.



Aujourd'hui les techniques de feu



always in touch with our clients
to design the **products you will need in the future**

LEADER NORTH AMERICA Inc.

Statesville, NC 28677 - U.S.A.
Tel.: +1 704 528 1157 - Toll free: 800 358 6414 - Fax: +1 704 528 5292
info@leadernorthamerica.com

LEADER GmbH

Provinzialstraße 14 - 66130 Saarbrücken - Germany
Tel.: +49 (0) 6893 8007-0 - Fax: +49 (0) 6893 8007-10
info@leader-gmbh.de

LEADER S.A.S.

Z.I. des Hautes-Vallées - Chemin n° 34 - CS20014 - 76930 Octeville sur Mer - France
Tel.: +33 (0) 2 35 53 05 75 - Fax: +33 (0) 2 35 53 16 32
info@leader-group.eu

LEADER GROUP UK LTD

195, Allport Road - BROMBOROUGH - Wirral CH62 6BA - England
Tel.: +44 (0) 151 334 0202 - Fax: +44 (0) 151 346 1057
info@leader-group.co.uk

SPAIN / PORTUGAL / LATIN AMERICA

Barcelona
spain@leader-group.eu

EAST ASIA / PACIFIC

Singapore
asiapacific@leader-group.eu

CHINA / HONG KONG / MACAU

Ningbo
china@leader-group.eu

www.leadernorthamerica.com



Part of the **Genetech group**

