

# Allantois

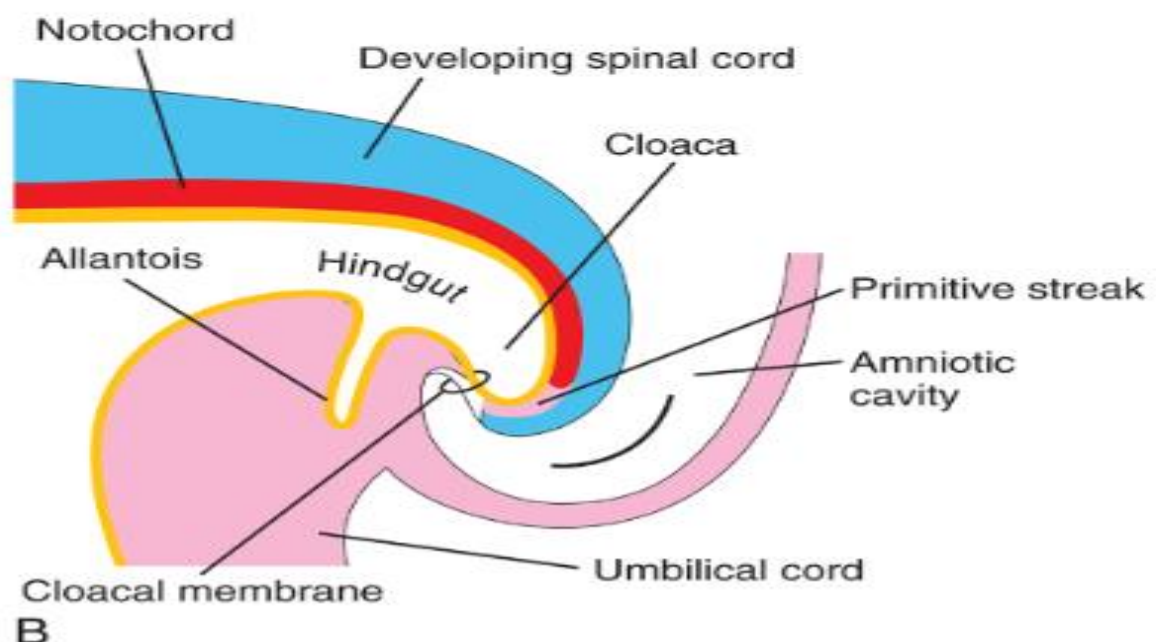
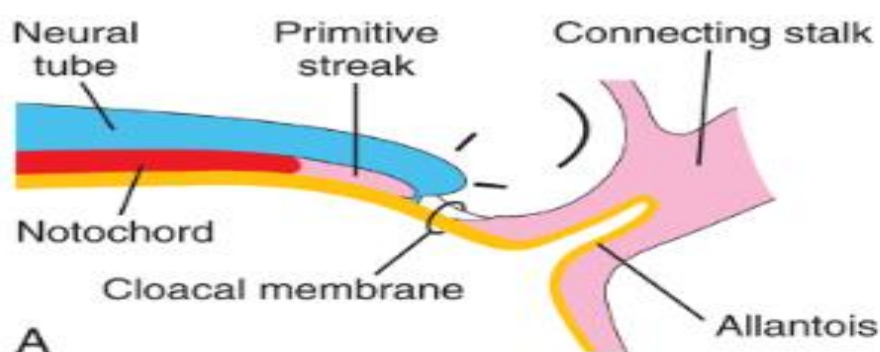
★ It is a **tubular evagination** of the 2<sup>nd</sup>. yolk sac into the connecting stalk .

★ **Development :**

- During **3<sup>rd</sup>. week** , the allantois develops as a tubular projection from the dorsi-caudal part of the 2<sup>nd</sup>. Yolk sac into the connecting stalk .

★ **Parts and fate :** It is formed of **2 parts :**

- **Intra-embryonic part :**
  - **The proximal part :** form the **apex** of urinary bladder .
  - **The distal part , called urachus** connect the urinary bladder to the yolk sac , is obliterated forming **median umbilical ligament** which extends from the apex of the bladder to the umbilicus .
- **Extra-embryonic part** , inside the umbilical cord , become **obliterated** .
- **Allantoic vessels** form the **umbilical vessels** .



★ **Anomalies of urachus :**

- 1- Persistence patency of whole length of urachus leads to **fistula** between the urinary bladder and umbilicus .
- 2- **Umbilical polyp** : due to persistence patency of the distal part of the urachus .
- 3- **Bladder diverticulum** due to persistence patency of proximal part of the urachus .
- 4- **Urachal cyst** : due to persistence patency of central part of the urachus .

