

What is Display Printing Mesh as well as Exactly How Does it Work?

The very first thing you require to recognize about display printing mesh is exactly how it functions. The fabric is made use of as a pattern. The ink is attracted onto the mesh and pumped via the screen by capillary activity. The thickness of the stencil as well as mesh will certainly identify just how much damp ink will be transferred onto the substrate. The mesh after that comes to be a part of the pattern and is squeegeed away from the substrate by a squeegee. As soon as the display is snap-off from the substrate, the ink will certainly continue to be externally.

Picking the best mesh size is very important. Different mesh counts permit various kinds of ink to pass through. A reduced mesh count will certainly not permit white ink to move. A greater mesh matter will enable white ink to transfer through, whereas a reduced one will not enable it. While the dimension of the display will certainly identify the top quality of the print, there are some factors to consider you need to keep in mind when choosing your mesh.

First, mesh count describes the number of openings per inch. A one-inch square mesh has 156 openings. A higher-density mesh will certainly have fewer openings. You'll need to align your design on the display to make sure that it will certainly appear on the Tee shirts correctly. A low-density mesh will cause a slim ink deposit, leading to a faded picture.

Besides the mesh matter, the various other factor you ought to know is just how much information you can jump on your t-shirt. High-density screens are terrific for fine information, while low-density ones are better for more coarse, dense prints. For a higher-density screen, ensure it goes to the very least 156 or 64 microns. industrial filter mesh supplier can buy mesh of a lower mesh matter and also still obtain terrific outcomes.

Screen Printing Mesh Applications



Textile Printing



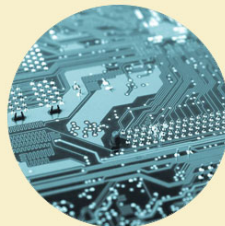
Ceramic Printing



Glass Printing



Plastic Printing



Electronic Printing



Packaging Printing

The cord mesh will make or damage your print. A high-density screen mesh will not allow with adequate ink for white ink. A low-density display will just offer you a thin-density print. Nevertheless, if you have white ink, you ought to utilize 230-mesh or 180-mesh displays. Inks of various colors will need various mesh types and a high-density display will not let enough ink through for white ink.

Screen mesh is essential for a couple of reasons. A low-density mesh will certainly provide you a smoother print, while a high-density one will certainly be able to hold finer information. As an example, a high-density display will permit you to make use of even more information than a low-density canvas. A high-density mesh benefits a tee shirt.