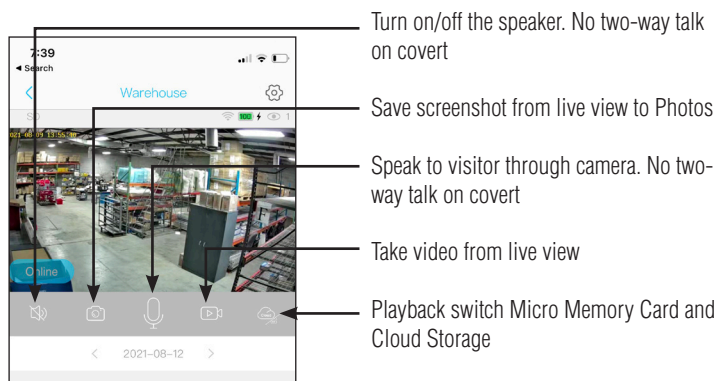
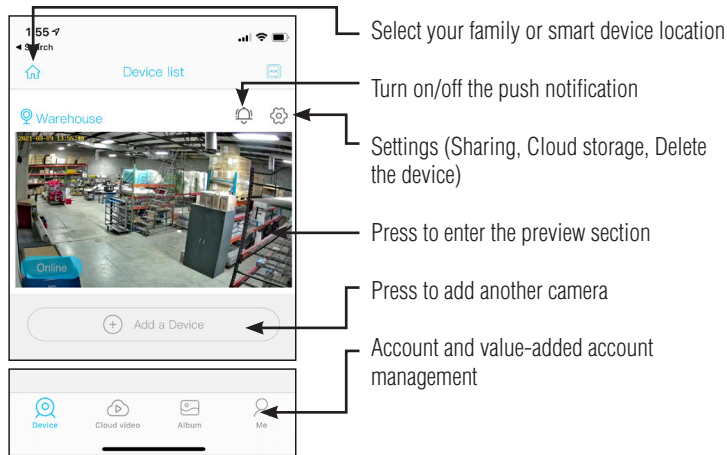
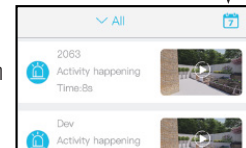
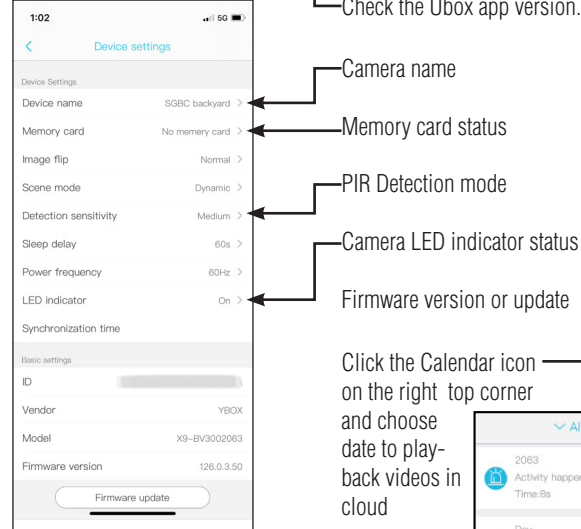
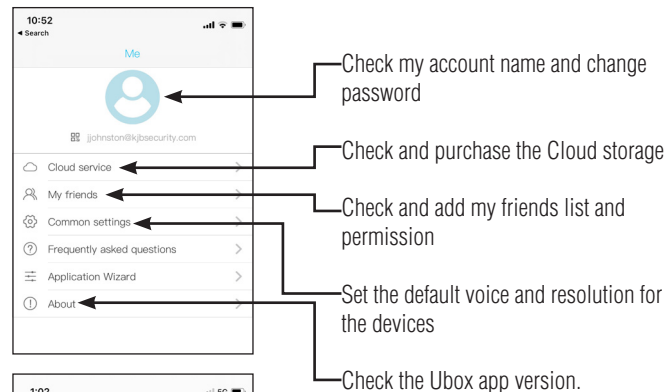


USING THE UBOX APP



USING THE UBOX APP



TROUBLE SHOOTING TIPS

Why won't my camera connect to wi-fi?

Please confirm that the wireless network to be connected is the 2.4Ghz protocol. If your router combines 2.4Ghz and 5G you will need to open your router settings and determine the 2.4Ghz wi-fi protocol (see next question.) Make sure the camera indicator light is in the slow red light state. Confirm the wi-fi password is correct, with no extra spaces.

Why does the Ubox app say no wi-fi?

If the App says no Wi-fi it unable to detect a 2.4Ghz signal it may be to weak in this case move the camera closer to the router or you could have Band Steering enabled on your router.

If your wifi router has both 2.4Ghz and 5G channels and uses band steering (2.4Ghz and 5G combined) the camera will not find the wi-fi setting. The router starts on 5G by blocking any attempt by the camera to connect to the 2.4 GHz band. You will have to disable band steering by giving each channel its own unique SSID Name (wi-fi name). To do so go to your router dashboard and separate the bands or enable 2.4Ghz only. If you cannot do this we suggest buying a dedicated single band 2.4Ghz router for your security camera system.

Why am I not getting push notifications?

Motion Detection is turned off within the Ubox app which prevents notification function.
Alerts & Notifications setting for the Ubox app during install where disallowed which will prevent any notification setting functioning

What power supply mode does the device support?

The camera is powered by a lithium-ion battery with 90 days of stand-by power or 16 hours of continuous power.

What are the indicator lights?

Indicator Lights are great for set up and trouble shooting. Turn them on and off in the app. In Device List, click the gear icon and select on or off.
Blue light flashes = Pairing Status
Red light on = Failed WIFI Connection
Blue light on = Connected Successfully
Red & Blue light on together = Connecting WI-Fi

SET UP YOUR SLEUTHGEAR WI-FI CAMERA

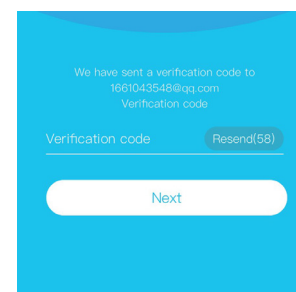
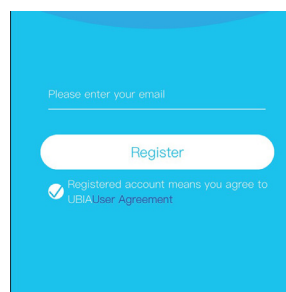
Scan the following QR code to install the app on your smart phone OR search for Ubox app in either Apple App Store (Apple users) or Google Play Store (Android users).



APP REGISTRATION

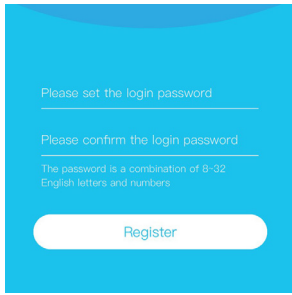
Open Ubox app. Input your preferred email address and select agree to user agreement. Press REGISTER. A verification code will be sent to that email address. Allow notifications from Ubox app in order to avoid missing any notifications.

Input verification code and press NEXT.

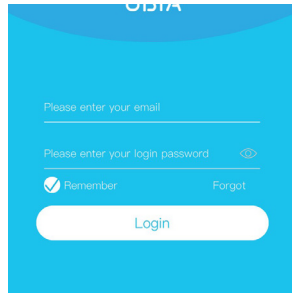


1. SET PASSWORD IN APP

Set the login password and confirm. The password requires more than 8 characters plus a combination of letters and numbers. Press REGISTER.

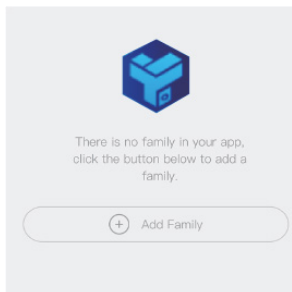


Enter your preferred email address and password. Then press LOGIN.

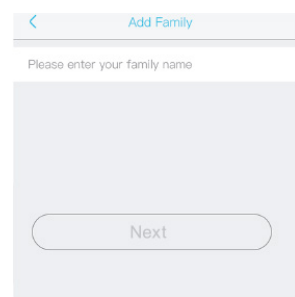


2. ADD FAMILY OPTION

Press ADD FAMILY then add groups of cameras or locations (garage, yard, office).

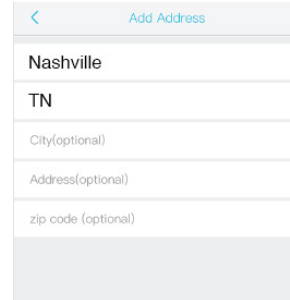


Press NEXT.

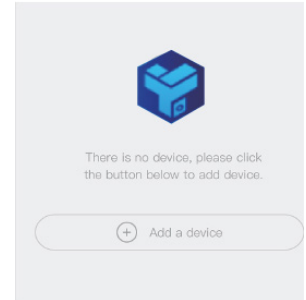


3. ADD CAMERA FEED TO SMART PHONE

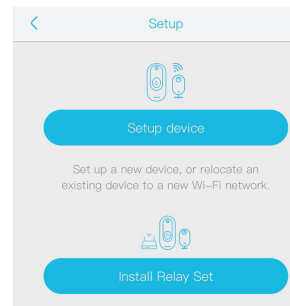
3a. Enter address information. Press DONE.



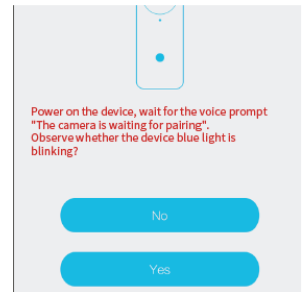
3b. Press ADD A DEVICE to add camera to the Ubox app.



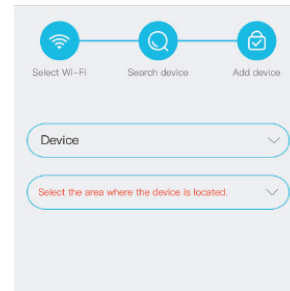
3c. Connect the camera with power supply and connect smart phone to wi-fi. Press SET UP DEVICE.



3d. Once the camera is powered on, a blinking blue LED on the camera will indicate the camera is in pairing mode. Press YES when blue LED is blinking.



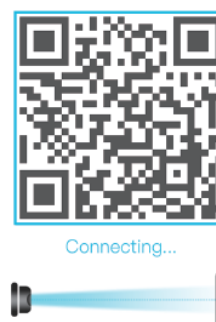
3e. Set the camera name and select the camera location.



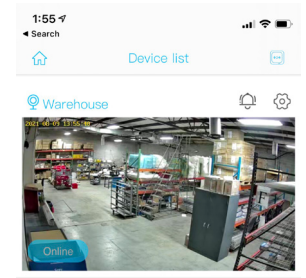
3f. The app will enter the 2.4Ghz wi-fi network name automatically. Enter wi-fi password. Then press QR CODE CONFIGURATION.



3g. A QR code will display on the smart phone screen. Use the camera to scan the QR code 4" away from the smart phone screen



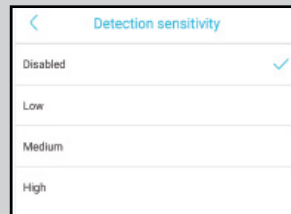
3h. The camera will appear on device list automatically. Now set up is complete. The camera is ready to use.



NOTES ABOUT PIR SETTINGS

User can change the PIR detection sensitivity in device settings. Set sensitivity at "Disabled" or "Low" to reduce false alerts and save the battery power in busy environments.

- Disabled: Disabled PIR detection. No recording.
- Low: Delay 7 seconds after PIR detects motion.
- Medium: Delay 5 seconds PIR detects a motion.
- High: Delay 1 second PIR detects a motion.



TECHNICAL SPECIFICATIONS

Resolution:	1920*1080P
Field of Angle View:	2.6mm @F2.0/155°
IR LED:	6*850nm
Wi-Fi:	802.11 b/g/n
Recording:	Above C10 high speed brand card is needed
Storage:	Cloud Storage or up to 128GB memory card
Battery:	Lithium-ion
Monitoring:	Motion Detection, Remote Live View
Notifications:	Push Notifications within 1 second
Device Wakeup:	Within 600 ms
Power Consumption:	Standby-120 uA, Working-170 mA