

Relations of Axillary Artery

	1st part	2nd part	3rd part
Anterior	<ul style="list-style-type: none"> • Clavicular head of pectoralis major, • Subclavius • clavi-pectoral fascia. 	<ul style="list-style-type: none"> • pectoralis minor • pectoralis major . 	<p>-Upper 1/2: Pectoralis major & medial root of median nerve crossing from medial to lateral.</p> <p>-Lower 1/2 : Superficial covered only by skin & fascia therefore its pulsation is easily felt.</p>
Posterior	<ul style="list-style-type: none"> • Serratus anterior • Nerve to serratus anterior (long thoracic nerve) . • Medial cord of brachial plexus 	<ul style="list-style-type: none"> • Posterior cords of brachial plexus • Subscabularis muscle. 	<ul style="list-style-type: none"> • Upper 1/2: Axillary nerve & subscabularis muscle. • Lower 1/2 : Radial nerve & posterior fold of the axilla (teres major and latissimus dorsi muscles).
Medial	<ul style="list-style-type: none"> • Axillary vein. 	<ul style="list-style-type: none"> • Medial cord of brachial plexus • Axillary vein . 	<ul style="list-style-type: none"> • Ulnar nerve & medial cutaneous nerve of forearm separating the artery from axillary vein .
Lateral	<ul style="list-style-type: none"> • Lateral & posterior cords of brachial plexus 	<ul style="list-style-type: none"> • Lateral cords of brachial plexus • Coracobrachialis muscle . 	<ul style="list-style-type: none"> • Musculo-cutaneous , lateral root of median nerve, trunk of median nerve. • Coracobrachialis muscle .

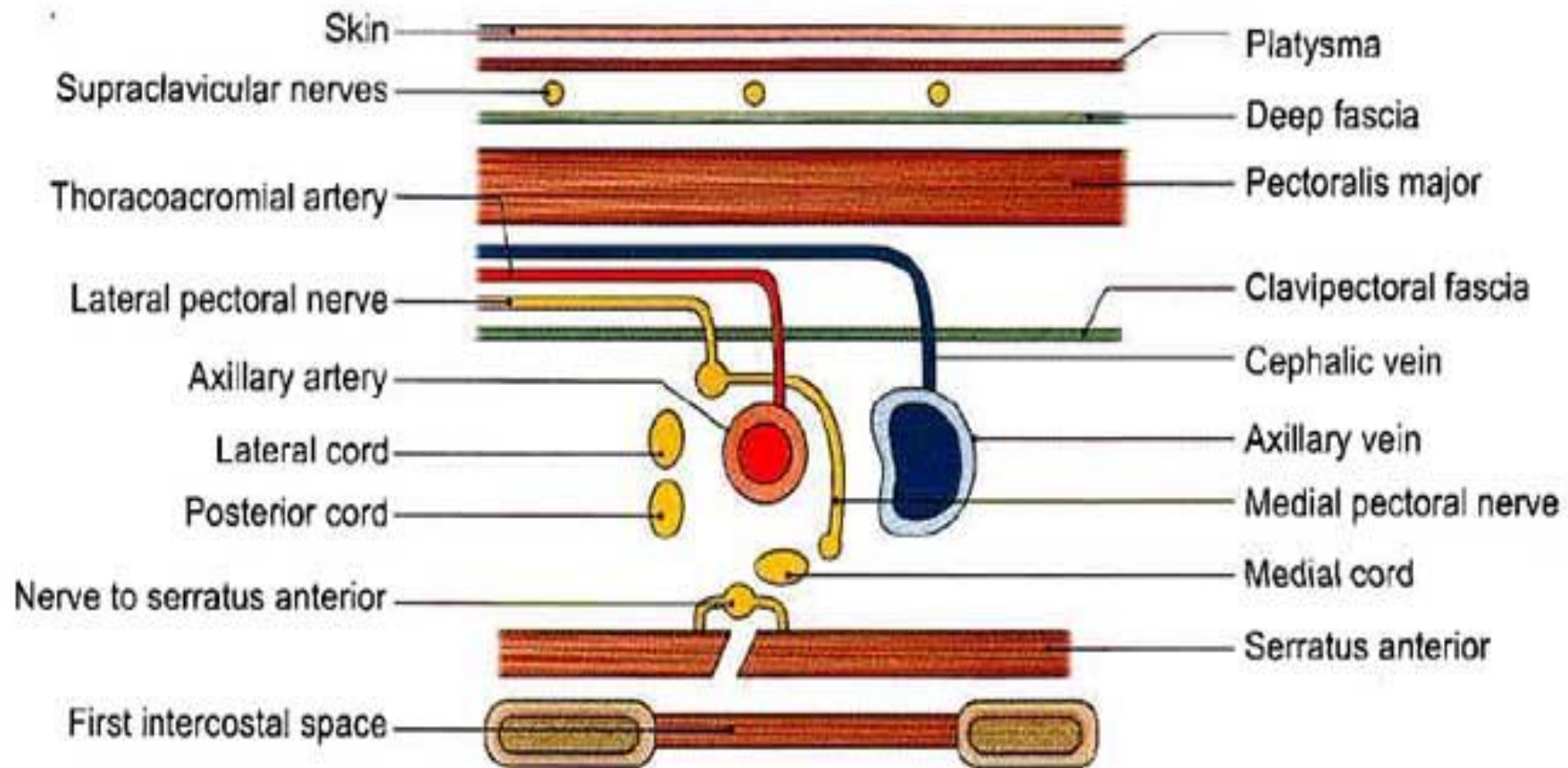


Fig. 4.7a: Relations of first part of axillary artery

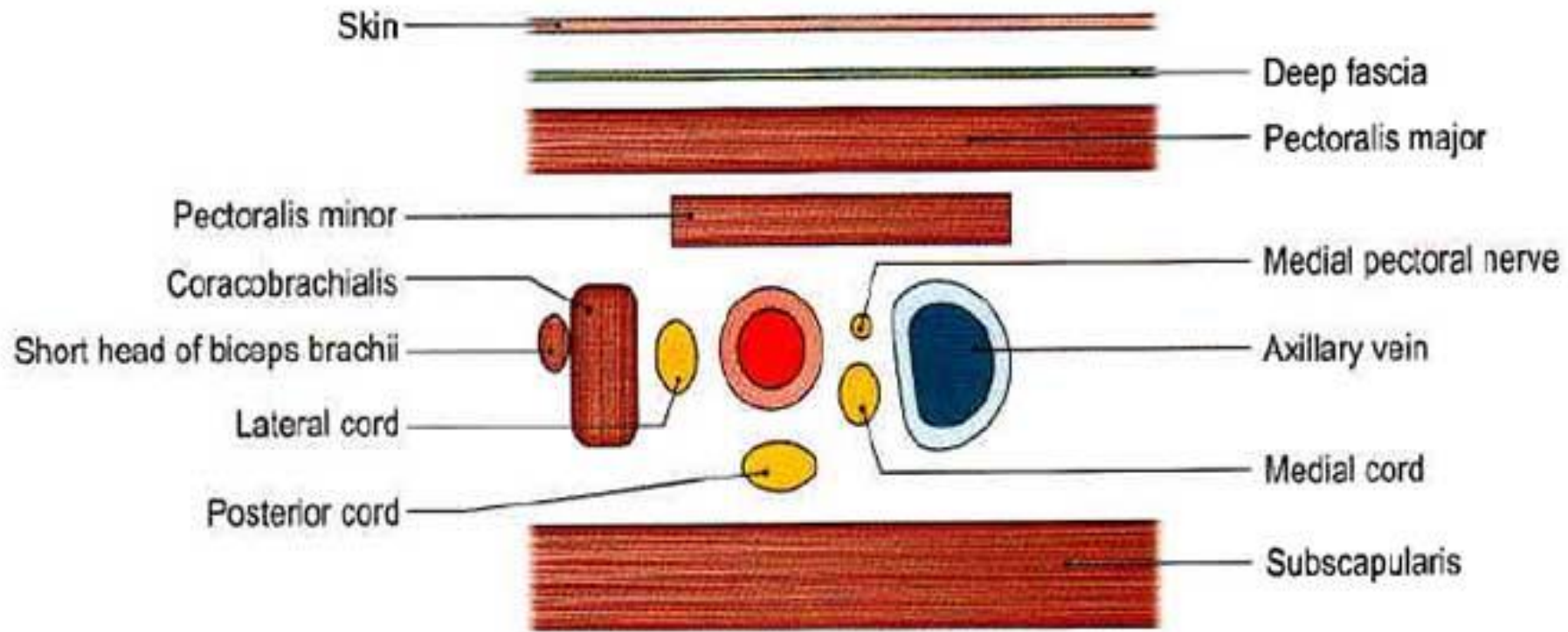


Fig. 4.7b: Relations of second part of axillary artery

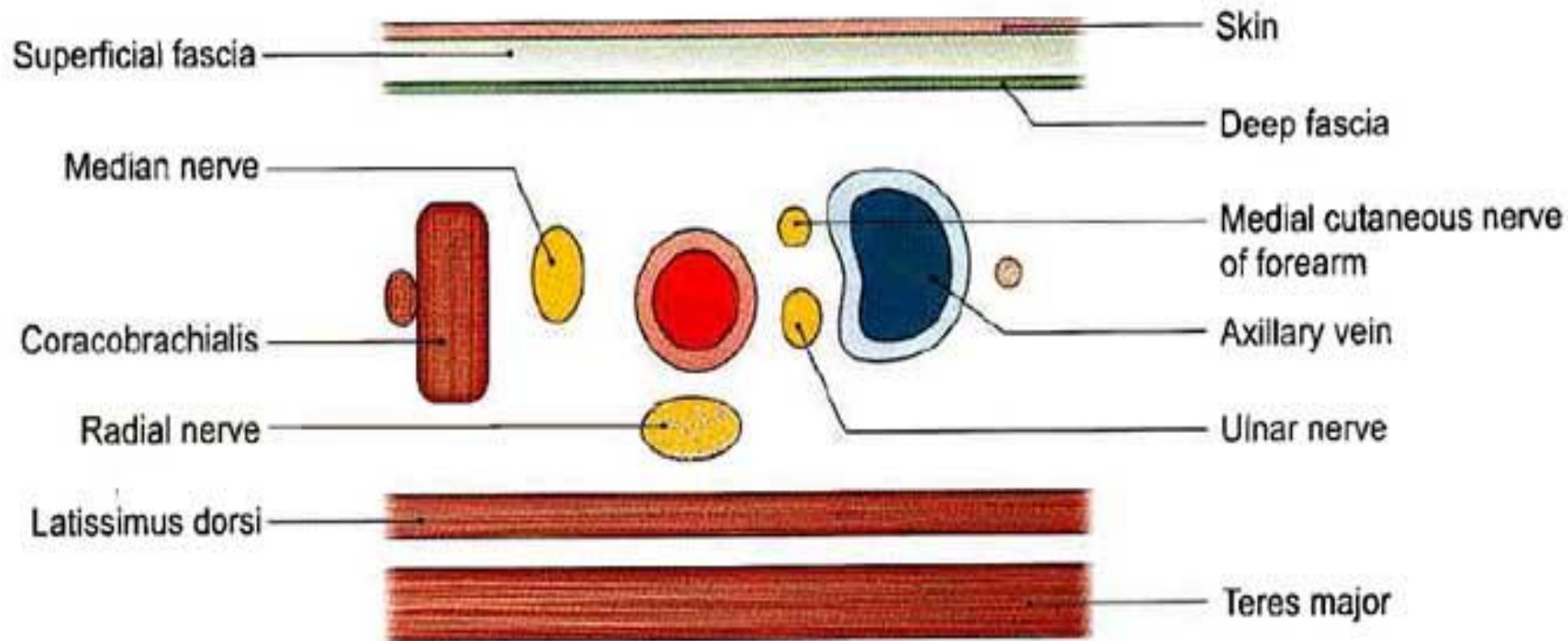


Fig. 4.7d: Relations of third part of axillary artery (lower part)