



# ESCAPE FROM TARKOV CUSTOMS

-  SPAWN POINT
-  LOOT
-  GROUND STASH
-  MEDS
-  EXTRACT
-  SCAV SNIPER
-  SCAV SPAWN
-  BOSS (RESHALA)



Original 3D render by MAKSEN | New design by Nuxx9 (JAN 06 2020) | Thanks to Marvelin and /u/Monsieur\_dArtagnan for previous updates



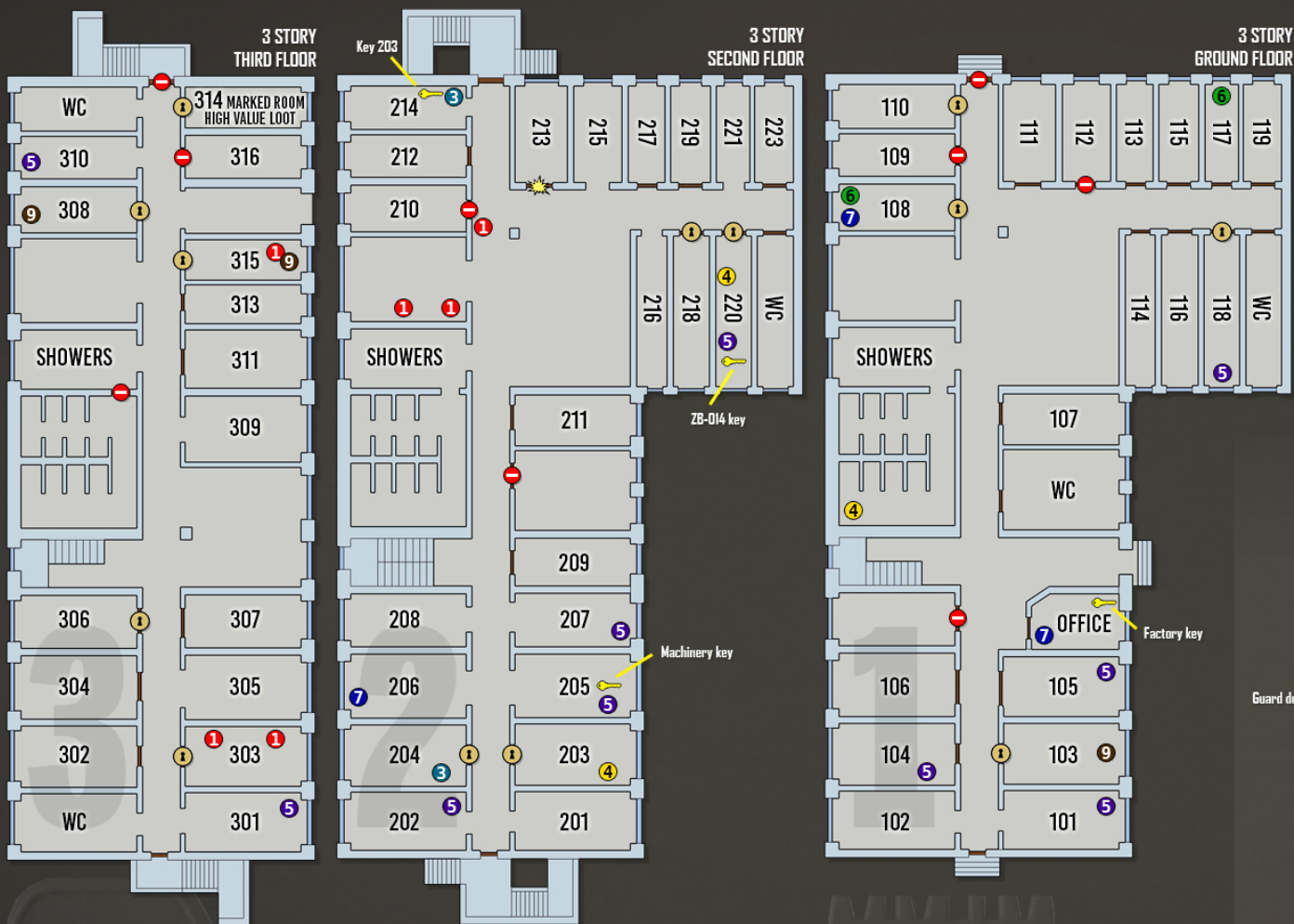
Customs' Hidden Stashes  
by m1ksu

Original map  
by Marvelin

# ESCAPE FROM TARKOV

## DORMS IN CUSTOMS

- 1 KEY NEEDED
- BLOCKED
- ☀ BREACHABLE



<span style="color: red;">1</span> Crate, Box or Weapon	<span style="color: yellow;">4</span> Duffle Bag	<span style="color: blue;">7</span> Computer
<span style="color: magenta;">2</span> Medical Bag	<span style="color: purple;">5</span> Jacket	<span style="color: orange;">8</span> Dead Scav
<span style="color: cyan;">3</span> Locker/Safe	<span style="color: green;">6</span> Cabinet	<span style="color: brown;">9</span> Loose Loot



- ▼ SPAWN POINTS
- 🔑 KEY SPAWNS
- 🏃 PMC EXIT
- 🚪 SCAV EXIT
- 🚫 SCAV AREA

- Weapons / Pieces
- Crates / Ammobox
- G Grenades
- X Safe
- Money / Register
- Jacket
- Bag / Toolbox
- Loose loot
- Computer
- + Medicine

Edited by RazelvvPI  
 2019-11-08  
 BY MARVELIN 2019-01-25



# SHORELINE HEALTH RESORT

## LOOT MAP



### West | 3rd Floor



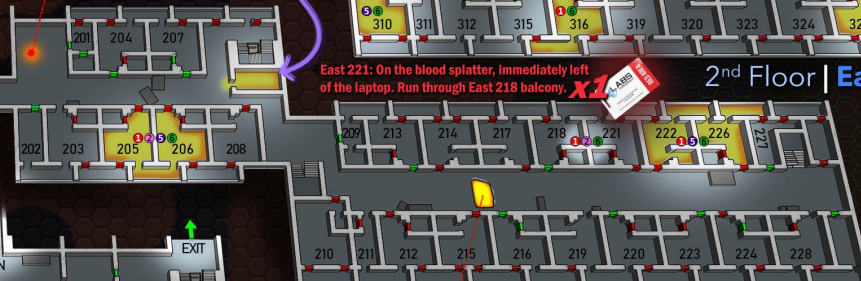
### 3rd Floor | East



### West | 2nd Floor



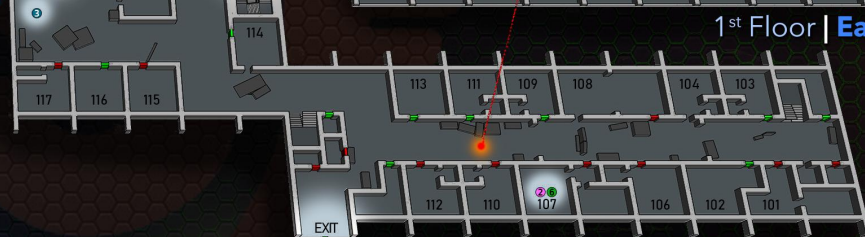
### 2nd Floor | East



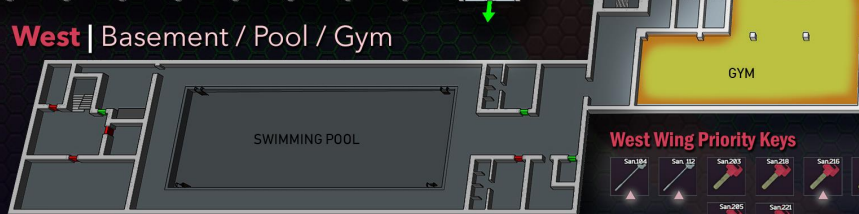
### West | 1st Floor



### 1st Floor | East



### West | Basement / Pool / Gym



- 1 CRATE, BOX, WEAPON OR LOCKER
- 2 MEDICALS
- 3 DEAD SCAV
- 4 SAFE
- 5 POTENTIAL RARE ITEM
- 6 RANDOM LOOT/BAGS

#### West Wing Priority Keys



#### East Wing Priority Keys

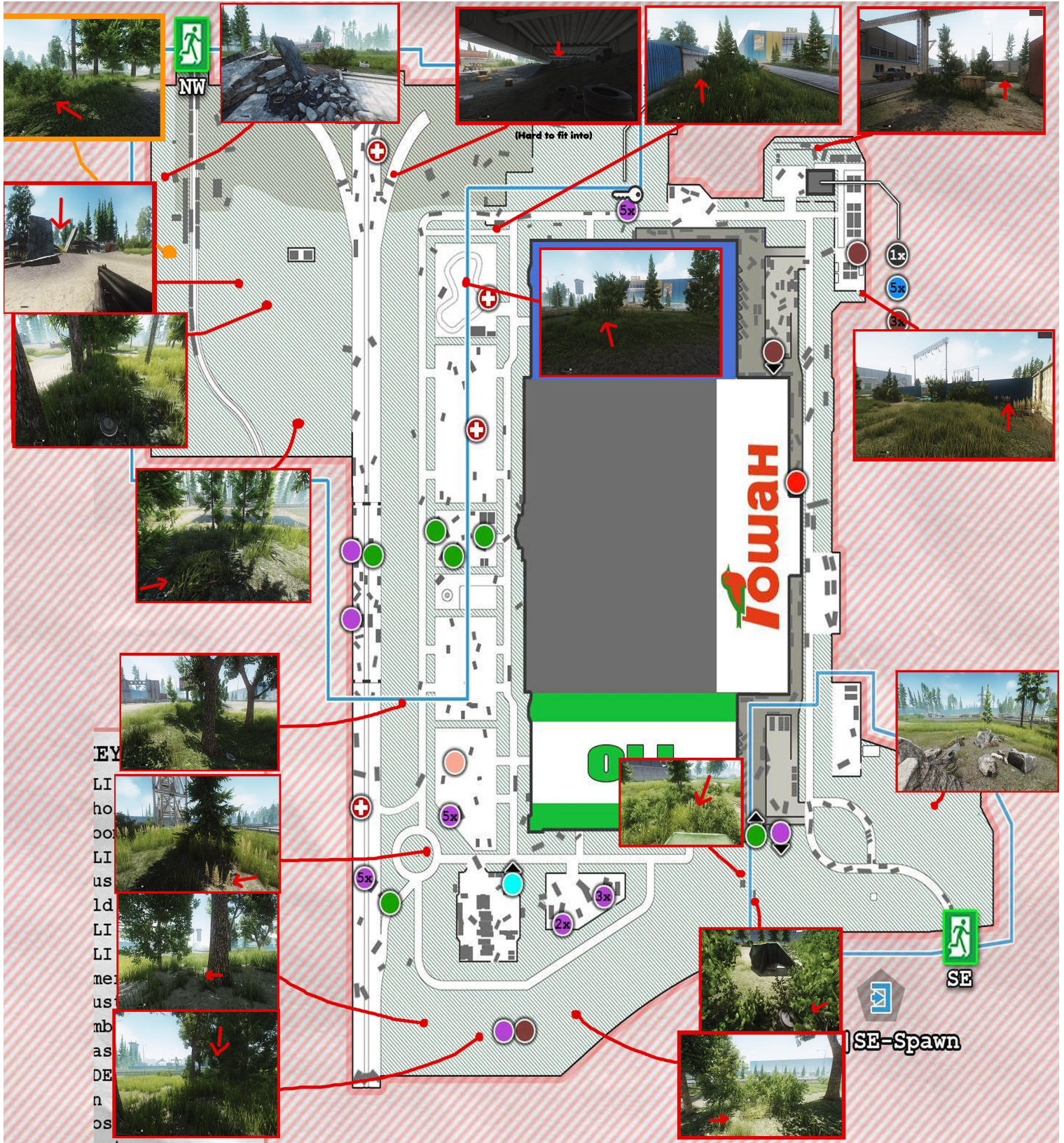


# INTERCHANGE

Map version 1.4  
Game version 0.12.2.5633







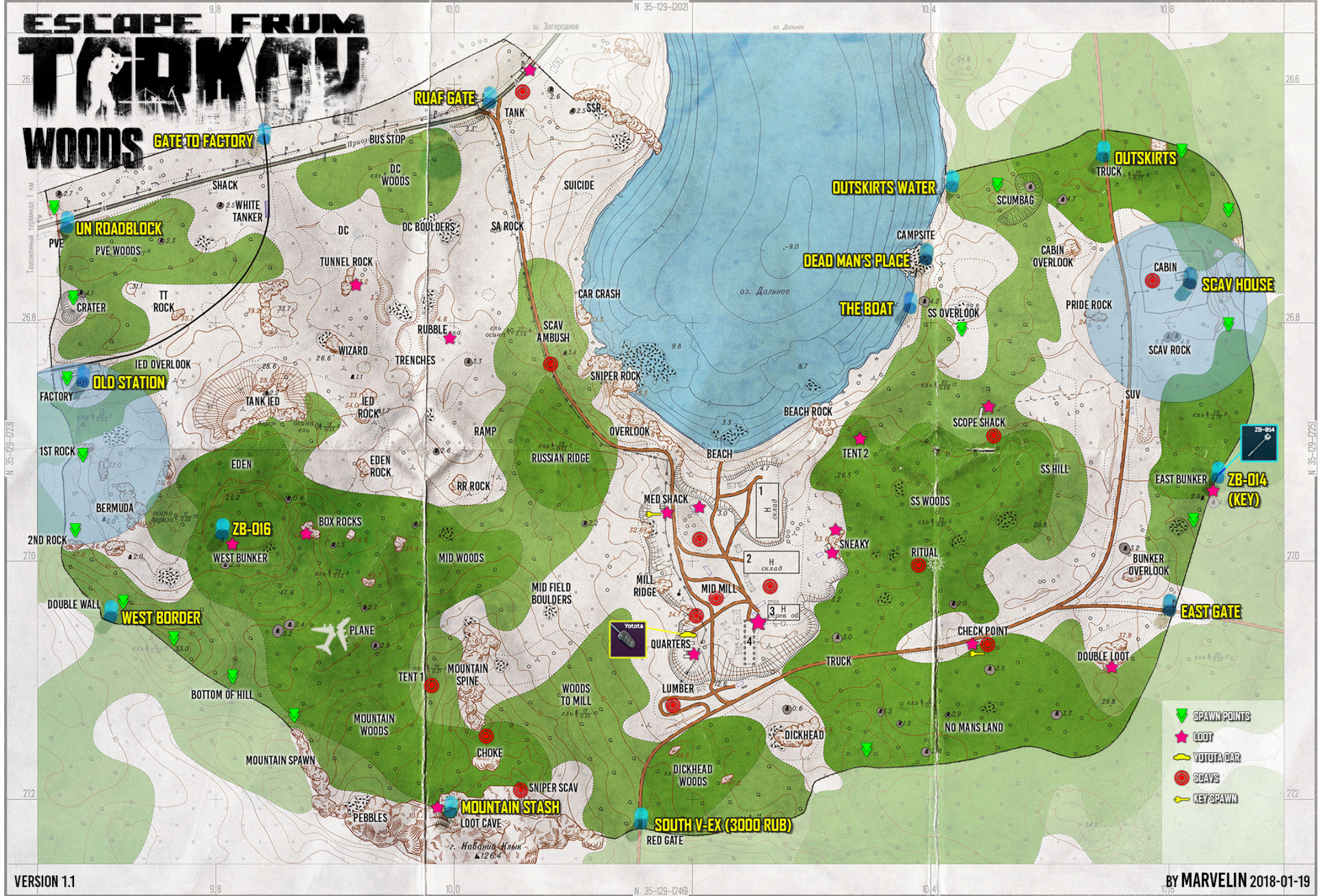
**FILE CABINET**  
**LOOTBOX**  
**SAFE**  
**MEDICAL BAG**  
**CASH**  
**COATS / MISC**  
**PELICAN BOX**

**PMC EXIT**  
**BOTH EXIT**

**INSERT** (pink arrow icon)  
**SCAV(S)** (red circle icon)



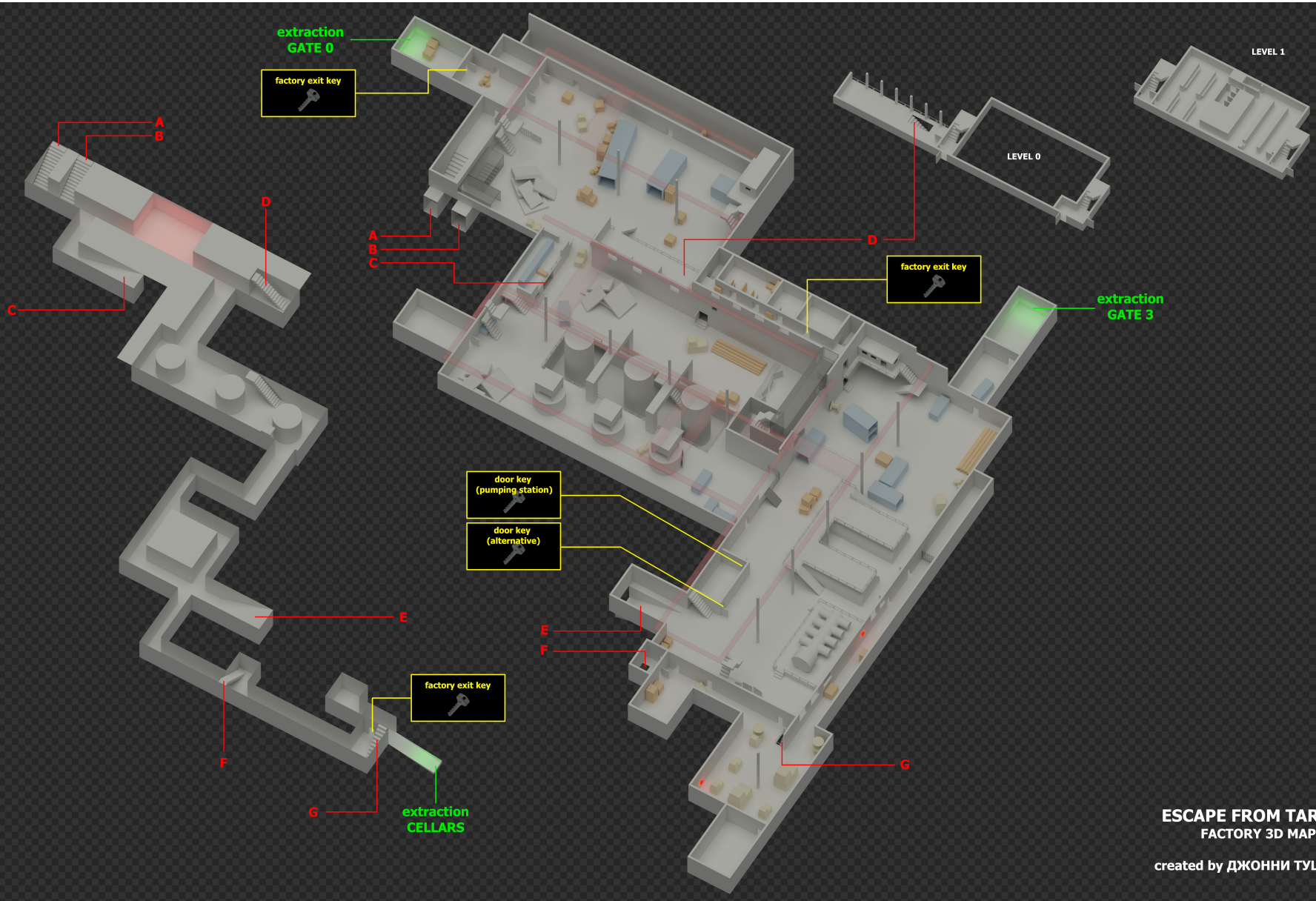
# ESCAPE FROM TROKAY WOODS



0-11.7  
ESCAPE FROM TARKOV - FACTORY  
by: stealtheh

- TUNNELS
- FLOOR 1
- FLOOR 2
- FLOOR 3
- OBSTACLES & WALLS
- SMALL OBSTACLES
- SPAWNS
- EXTRACTIONS
- LOOT
- FACTORY KEY
- "OLD" DOOR KEY





**ESCAPE FROM TARKOV**  
FACTORY 3D MAP

created by ДЖОННИ ТУШОНКА

# RESERVE

3D BY PHOTONREADY  
BASED ON THE MAP BY ROFLWOFFL

ESCAPE FROM  
TRUCKAD WIKI

2-1-2020  
VERSION 0.12.1.5413  
MOST RECENT EDIT WILL  
ALWAYS BE ON THE WIKI



“Braindead simple!”  
Version 2.0

# EZ AMMO CHART

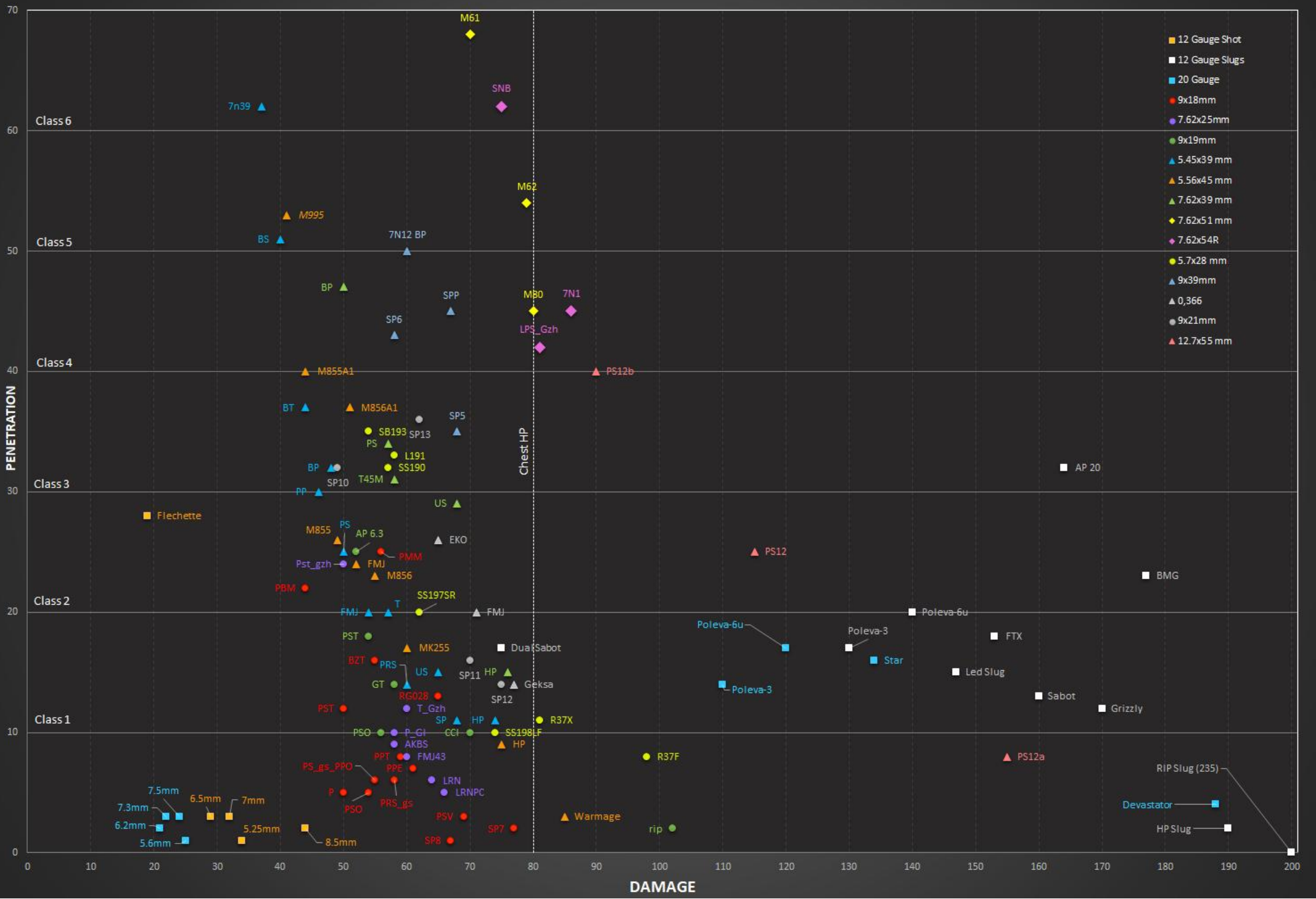
BY: **sunmachine**  
twitch.tv/sunmachine\_

	5.45x39	5.56x45	7.62x39	7.62x51 (.308)	7.62x54R	9x39	5.7x28	9x19	4.6x30	12x70	9x18	
	AK-74 family 	M4 family/MDR 	AKM family/SKS 	Various high caliber rifles 	Mosin/SVDS 	VAL/VSS 	P90/5-7 	9mm SMGs 	MP7 	12 gauge shotguns 	Klin/PM 	Kedr/Kedr-B
<b>\$</b> Budget friendly. Use this at minimum	BP BT	M855A1 M856A1	PS	M80	LPS Gzh	SP-6	SS190	Pst gzh	FMJ SX	8.5.12c P-6u.12c 12x70 RIP	PMM	PBM
<b>\$\$\$</b> More expensive and higher performance	BS 7N39 Igolnik	M995	BP	M62 M61	7N1 SNB	BP	SB193	AP 6.3 RIP	AP SX	Flechette AP-20 slug	* The Kedr does not accept PMM; PBM is the next best option	

= Use this if possible. Best generalist round in slot, factoring in performance and cost effectiveness.

**Notes:**

- This chart is meant as an overly simplified easy reference tool. Ammo selections are my subjective recommendations.
- Most of the rounds absent from the chart are too low performance for me to ever recommend and I would not use them.
- Uncommon weapons and others are omitted on purpose.
- For more detailed ballistics data reference NoFoodAfterMidnight's ballistics chart and the Tarkov Wiki.









ESCAPE FROM  
TARKOV