



Holo

Team work



External view



First person view wearing Holo augmented reality visor

Remote teamworking has never been easier



Holo is a system of devices that use 5G connection to experience realistic interaction in remote team meetings through augmented reality technology.

The aim is to connect different cultures. Create a platform to help people communicate and overcome the language barrier with simultaneous translation, show images, etc.

Also to help the communication between people by overcoming the language barrier. A wearable device (fit on the ear) simultaneously translates the word you ask and suggests you the right expression/word to pronounce. The word is saved on your app so that you can go over it later.



Visor for augmented reality + Built in headphones



HOLO App

3D scanner and router + Built in microphone



How it works



Our society and lifestyle is changing right now, and that evolution opens up to new unexploited business fields in the sector of pioneering technology. Because of its high technological background and its wish of exploiting the 5G connection's opportunity, 3 is one of the most qualified companies to be in the first line to ride the wave of these emerging scenarios and needs.



PAT

Team work

Date : 2020

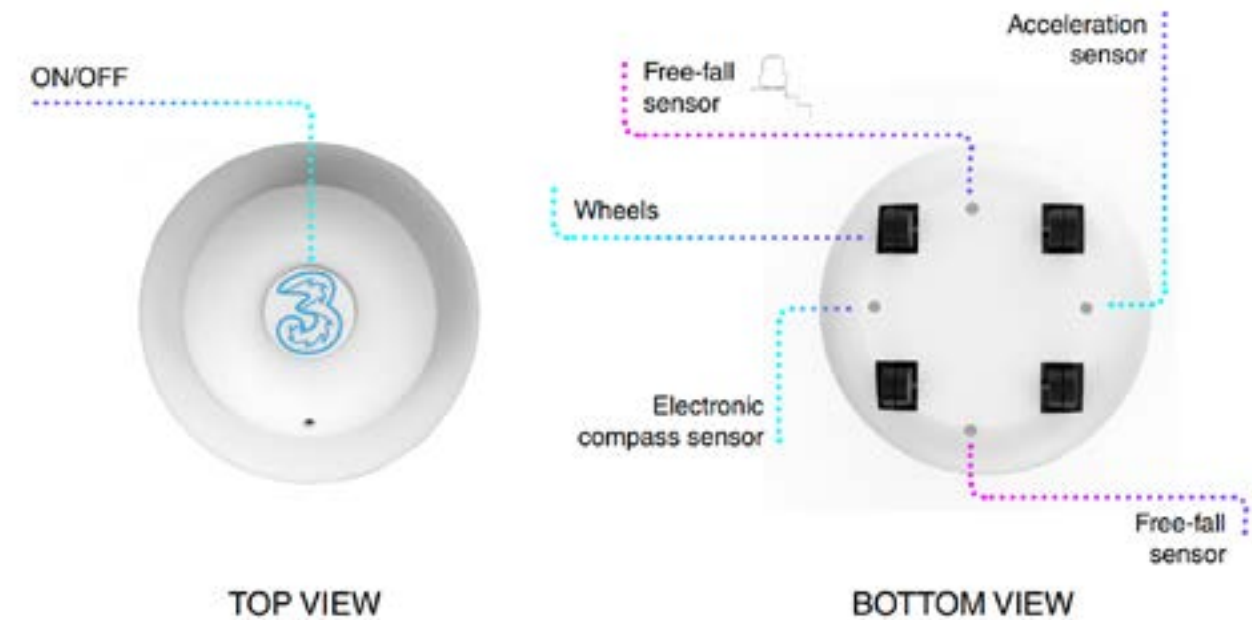


Pat is a robot router designed to provide company, support, and assistance for family, friends, Three, and especially older people. Why especially older people? It helps them keep a good level of autonomy, stimulate their memory, and improve their safety. Pat is not only for elderly people but also for their children, who can use the Pat app to monitor and communicate with their parents at any time.

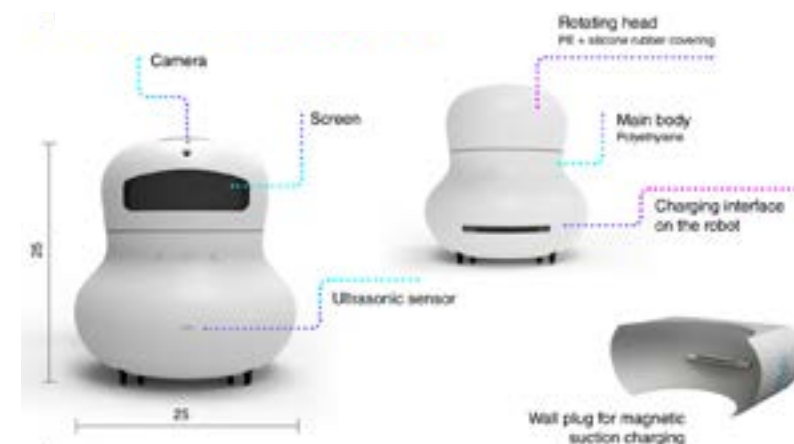


Modern life's speed can cause people to have less and less time to spend with their old parents, which leads to a condition of loneliness. Also, We are experiencing a historical moment with an unusual challenge of the COVID-19 global pandemic. Our recent research into the impact of COVID-19 explained that a huge increase in loneliness since the lockdown was put in place.

Technical details



The on/off button is placed on the top of the head of the robot. On the bottom, some sensors control the moves of the robot. To prevent the robot from falling when it meets the steps, two anti-falling sensors are installed in the wheels' direction. The electronic compass sensor allows Pat to accurately identify the forbidden areas set by users through magnetic induction. When it encounters those prohibited areas, it will actively avoid them and not enter the isolated areas without authorization. In the bathroom with water, where it may get stuck. The Acceleration sensor can control the movement mode of the equipment and check its balance. The charging method is magnetic suction charging, similar to that of the Apple laptop. Magnet fix at the robot's charging port, and a magnetic material fix at the other end's charger part. As long as the two ends are close to each other, the robot can charge.



The dimension of the robot doesn't exceed 25 cubic centimeters. The front, apart from the screen, presents the camera and an ultrasonic sensor, which can effectively measure the distance between the obstacle and the robot, and make timely avoidance.

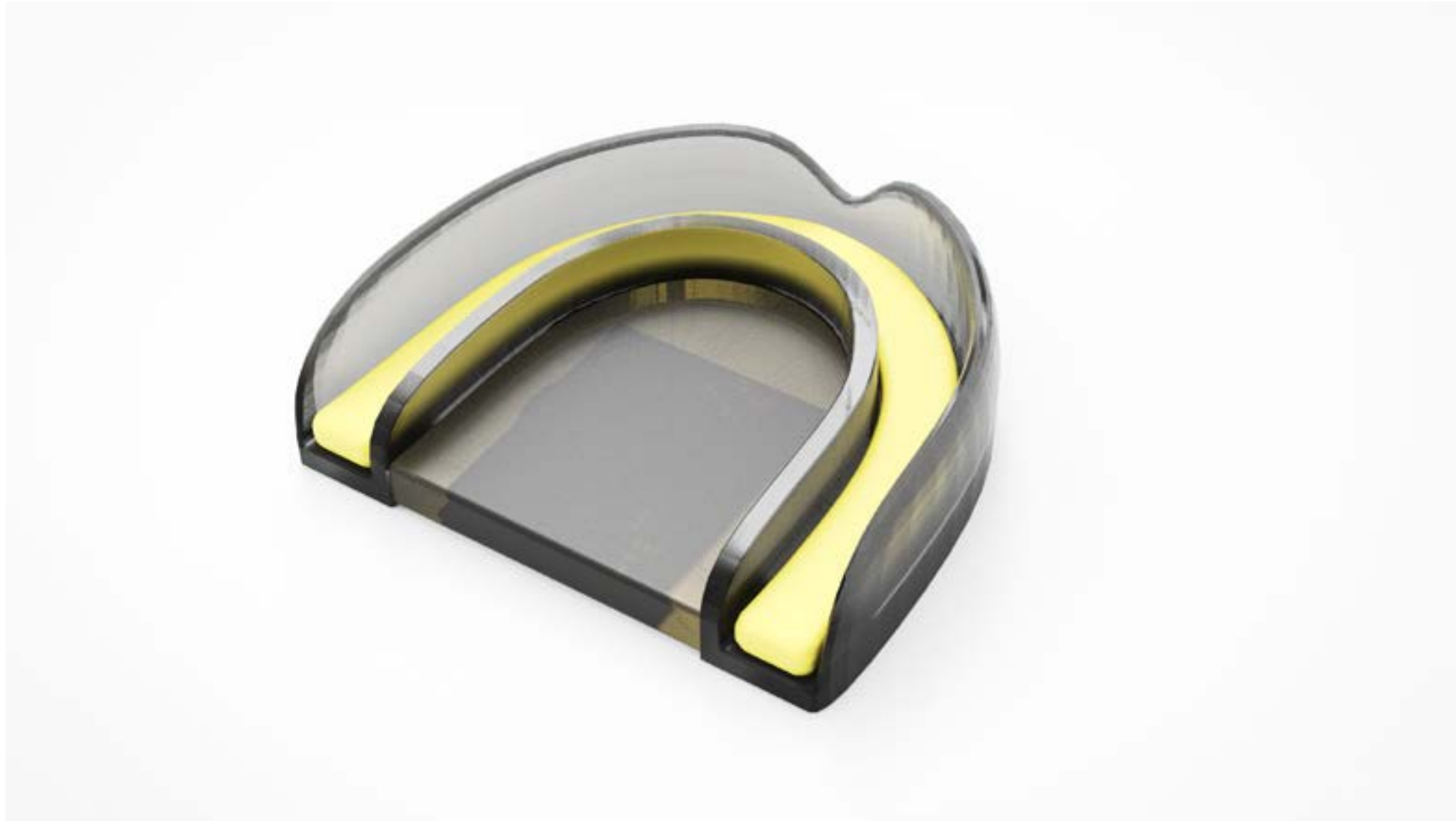
Pat

Takes care of your
loved ones



Animation

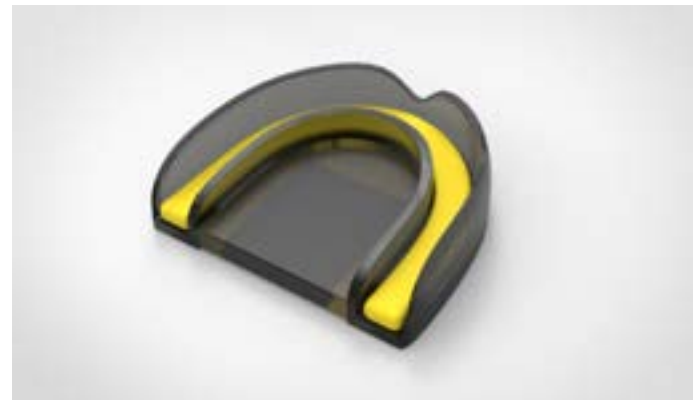
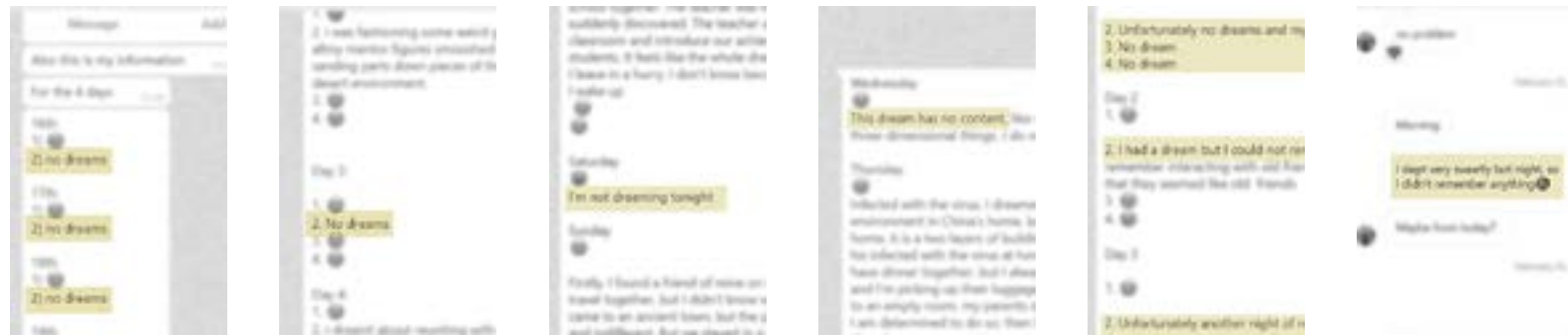
<https://www.dropbox.com/s/28pvg8l8vig0o1s/Pat.mp4?dl=0>



Empathy

By: Shakoora Rajaiee

One of the important matters in this project was a method of research. In this project, I used the survey technique to continue my research.

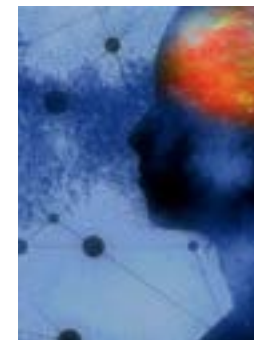
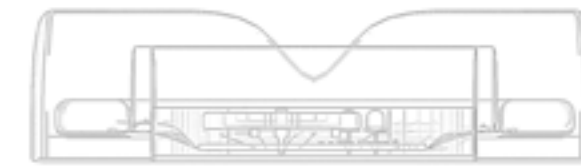


During this process a survey have been designed and people have been asked to record their dream for four-nights. Twenty people participated in this study.

The results shows that 67 percent of people didn't remember their dreams, at least for one night. It is said that five minutes after the end of a dream, we have forgotten 50 percent of the dream's content. Ten minutes later, we've forgotten 90 percent of its content. Why is that? We don't forget our daily actions that quickly. The fact that they are so hard to remember makes their importance seem less.

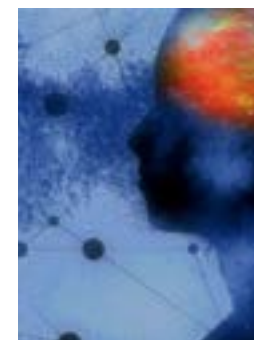
Animation <https://www.dropbox.com/s/ico3196wlfndcch/mouthgroup-362.mp4?dl=0>

Therefore, a product have been designed to help people to remember their dreams. The designed mouthguard can record information such as pulse, movement, grinding and snoring. Then this information is transferred to the application and Each feature mapped with different data such as beat rate, duration, pitch and note.



The sound when I dreamed that I was in an exhibition and presented a project for my family and friends. And I was so happy.

<https://www.dropbox.com/s/fjnu053o47jkac4/6.mp4?dl=0>



The sound when I dreamed that I was in an amusement park in my country and I was terrified and shouting. I asked for help, but no one was hearing me.

<https://www.dropbox.com/s/7skwl9ev5w7tdn2/5.mp4?dl=0>

Each feature mapped with different notes and the speed of the notes' beats changes according to the changing of the body symptoms.



Grinding:
 (0-2.5) pitch 66-88,
 (2.5-5) pitch 44-66,
 (5-7.5) pitch 22-44,
 (7.5-10) pitch 0-22.



Movement:
 (10-13) Duration 6-8,
 (13-16) Duration 4-6,
 (16-19) Duration 2-4,
 (19-22) Duration 0-2.



Then this information is transferred to the application and Each feature mapped with different data such as beat rate, duration, pitch and note. Here are the data for different body symptoms:

Pulse: (45-55) beat rate 80, (55-65) beat rate 100, (65-75) beat rate 120, (75-85) beat rate 140.

Grinding: (0-2.5) pitch 66-88, (2.5-5) pitch 44-66, (5-7.5) pitch 22-44, (7.5-10) pitch 0-22.

Movement: (10-13) Duration 6-8, (13-16) Duration 4-6, (16-19) Duration 2-4, (19-22) Duration 0-2.

Snoring: (0-2.5) note A, (2.5-5) note B, (5-7.5) note C, (7.5-10) note D.



Jewpathy

By: Shakoora Rajaiee

We all have emotions but children are not born knowing what their feelings are or how to cope with them.

My Emotions has been created to help children and people who have problem to express their emotions, learn to identify their own emotions and begin to empathise with others, leading to better relationships, academic achievement and essential life skills.



The pulse point and pressure points



The human ear is another organ of the body which is unique to an individual. Like fingerprints and other characteristics of the human body, the ear retains certain individualistic characteristics which are unique due to variations in the anatomical structure of the external ear (Iannarelli 1989).



This product has been designed to help people understand and share their feelings. Also, it is the ability to sense other people's emotions. The designed earring can record a pulse sensor. When you have a high heart rate beat, the color of the lights inside the earring changes into blue so other people can find out you are not in a normal situation, and they can feel your emotions and understand you better. When you have the usual symptoms, the lights are white. Furthermore, This Jewelry is unique because there wasn't designed jewelry with the light technique.

Views



Front



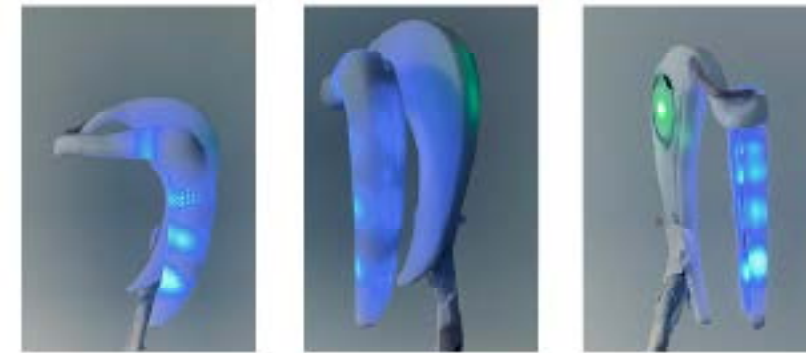
Back



Left



Top



Technical Part



Cap Lights Wires Earring Arduino Battery Sensore Cap





DULUX

By: Shakoora Rajaiee

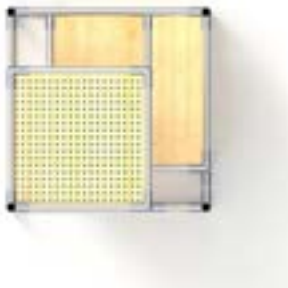
Structure

I personally love synthesizing ideas.

I decided to combine two animal houses in this project: the first aquarium and the second cat or dog house. Cats and dogs are among the most popular house pets, giving years of love and pleasure to their owners. But they also require special care. Most animal houses don't have a design, and the houses are hidden in the rooms. On the other hand, aquariums are luxury types of furniture in homes. So I determined to design the cat/Dog house as furniture by combining it with the aquarium.



Perspective



Top



Front



Right

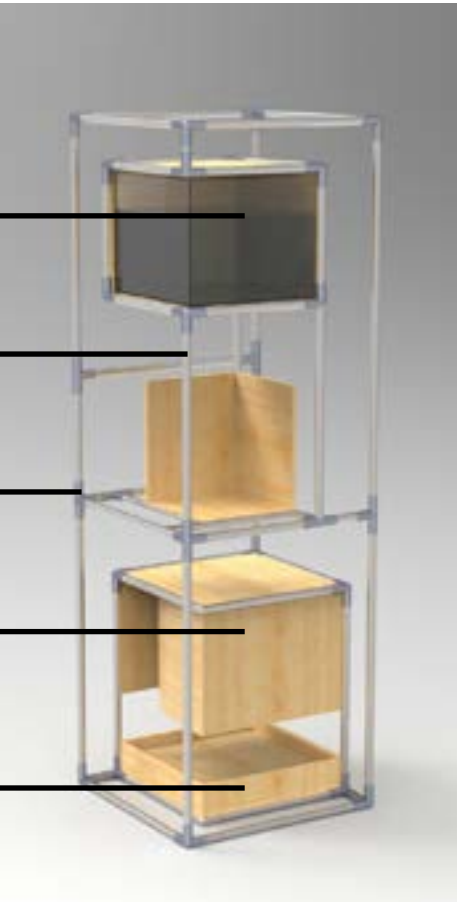
Aquarium

Aluminum

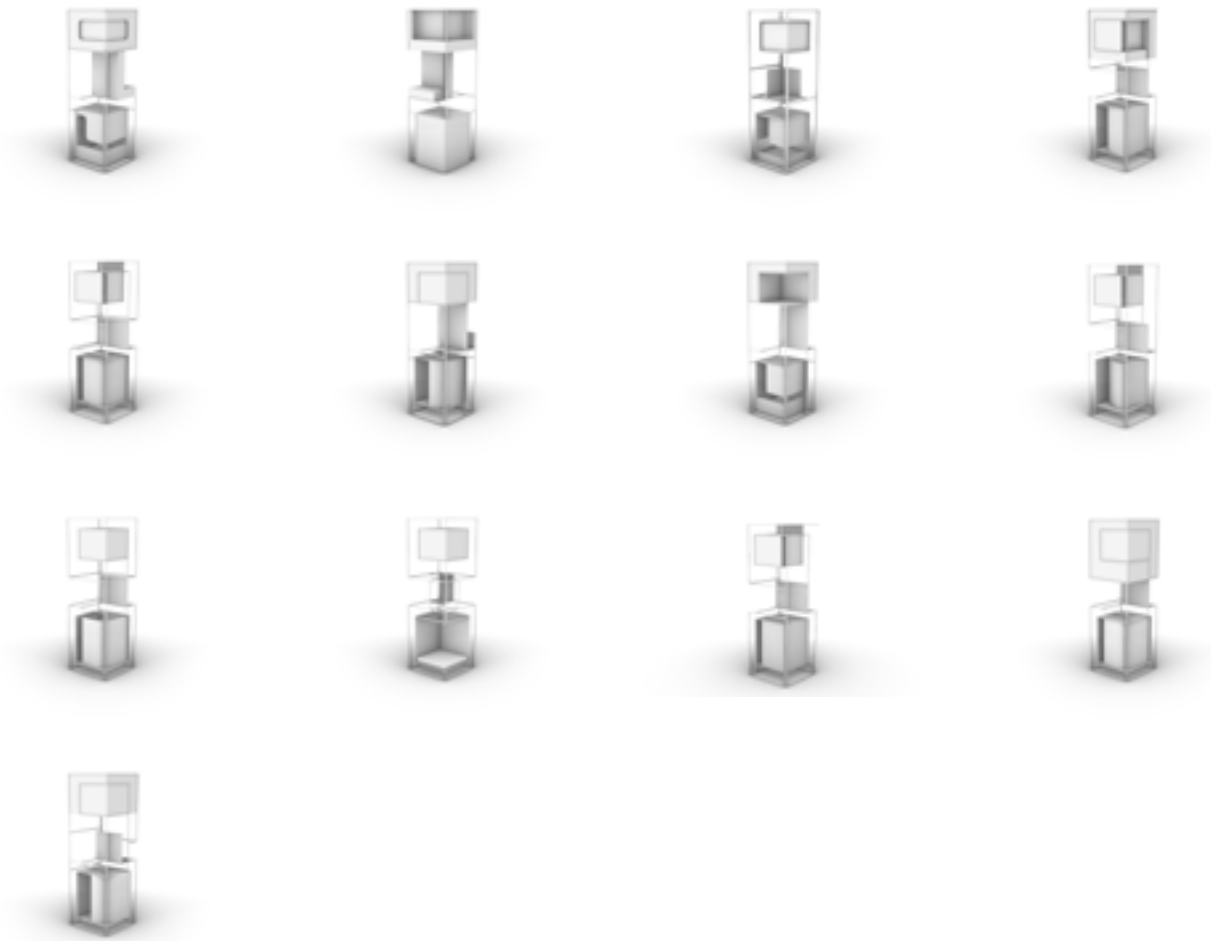
Connectores

Pet House

Concrete Box



I designed different alternatives to prevent cats from hurting or catching the fishes in aquarium. I created several spaces for cats for to play and jump in their designed houses, but they can not catch the fish or hurt them. I designed a strong structure with aluminum that, even if the cat jumping, nothing would happen to the fish or the pet house.



Animation

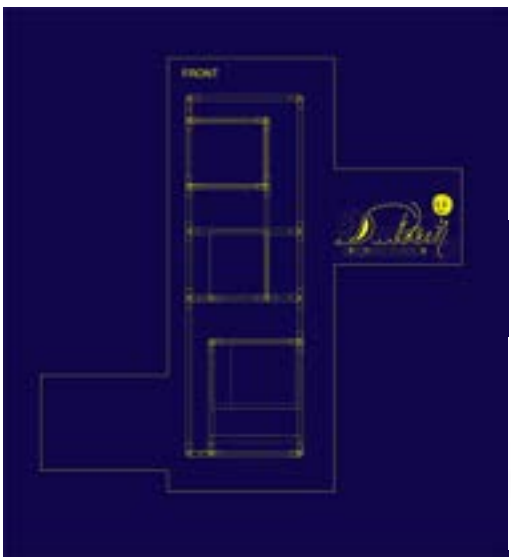
<https://drive.google.com/file/d/1u2S8I5gn1GE2Z2HchV9NFXnV7KfusOH/view?usp=sharing>

Packaging

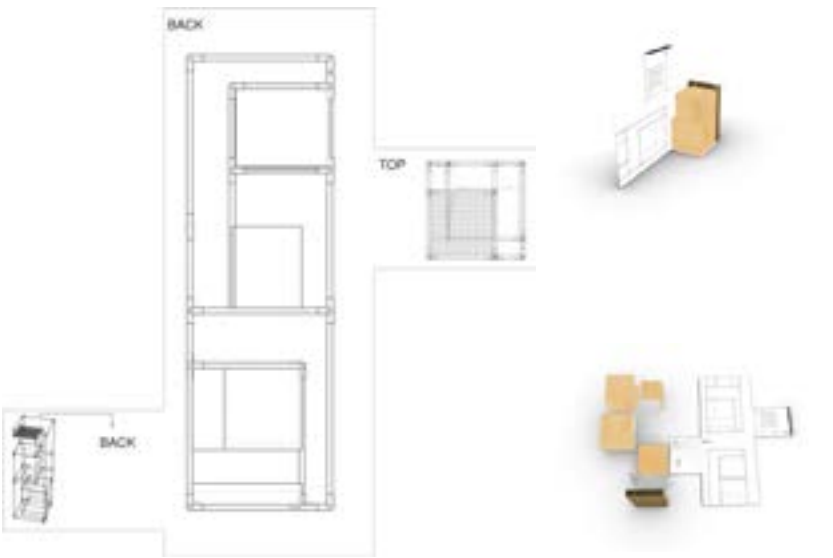


The product packaging design plays a very important role in branding, allows people to make their own teddy bears. Many consumers enjoy this option, even though they are charged a high price for using this feature but in return they do not have to bear production costs. In addition, the researchers pointed out the popularity of “haycations,” whereby city people pay to do farmers’ work for them. In all these cases, the researchers posit, people seem more willing to pay for an item into which they have put a degree of their own labor. In the end, I used the packaging box for giving structures on how to assemble the pet house easily.

Outside



Inside





Shakiba

By: Shakoora Rajaiee



During the global pandemic, personal protective equipment (PPE) has driven increased plastic pollution. The pandemic could result in monthly global consumption and waste of 65 billion gloves. The following product is designed to reduce the global waste consumption of plastic and, at the same time, make it easier for users to perform their day-to-day tasks. It is an all-in-one sanitizer bottle with a handle shape that automatically self-sanitizes its handle every time you spray. The handle can be used to grab up to 15kg weight or an underground/Bus standing handle, press buttons in an ATM, or open a doorknob.



Animation

<https://www.dropbox.com/s/gefo7w9km1iez4l/ANIMATION.198.mp4?dl=0>





MaTT + ART

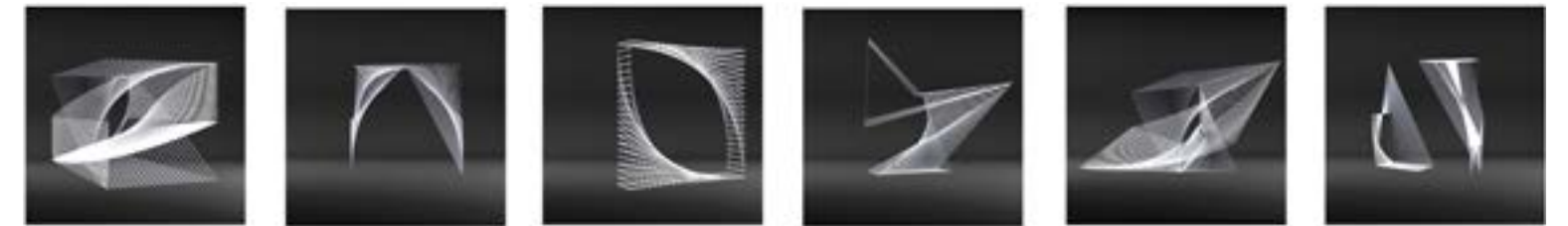
By: Shakoora Rajaiee

Tutor : Alireza Taghboni

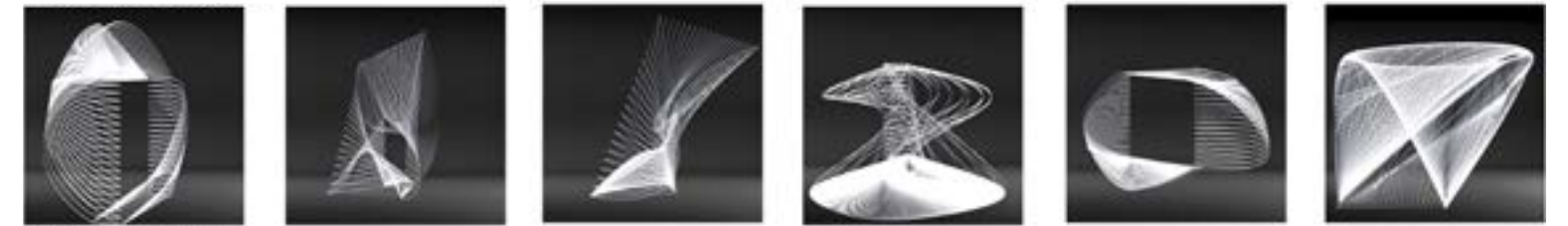


We began by analyzing the shape of the statue, Analyzing the characteristic of this statuten. Spaces and boxes that are produced because of the structure of weaved threads. When looking from up front angle the void presents it self like the above.

From the top angle the void looks like the above, From the right angle the void and the core looks like above, Contrast and discipline are the unique characteristic of my statute. Although the exterior frame looks simple but when you enter in you find out harmony and discipline. Density is another charectistic, They create knots in different parts. The density between sections. I did an analytical research and started to produce my findings, First I turned it around and laid it vertically in a 90 degree angle, I expanded the model by mirror image. As you can see the new characteristic is shaped by providing new spaces that can be opened up and closed up from the knotted point. Then we mirror it from the four corners, By mirror the image from 4 corners the new space is created that can be opened up and closed up from two folds. Which can be opened up and closed up from two folds and would create a partial space at each of its 4 corners. As you can see it gives our new direction and is giving us unique space which can not be blocked, When you extend it from 4 angles they are still open ended and the void is present in all the models. What these duplication does is to make a cover for the inner threads. BY referring to my statute data I started to produce and develop new orders .



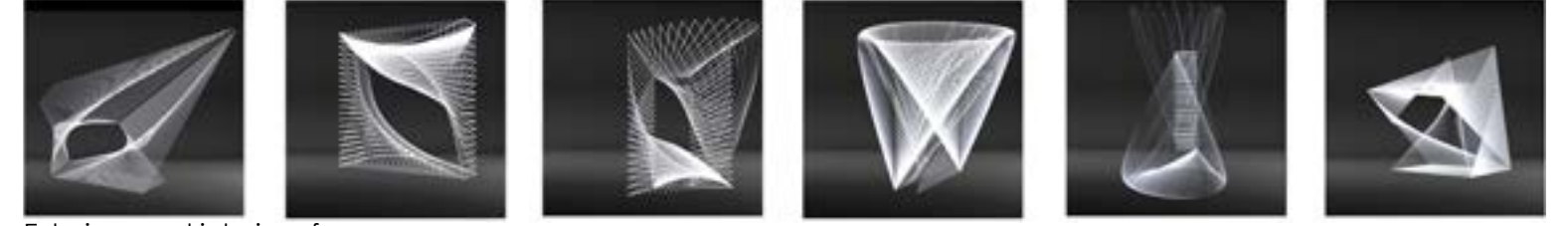
Change the sides



External frame



Interiore frame



Exteriore and interiore frame

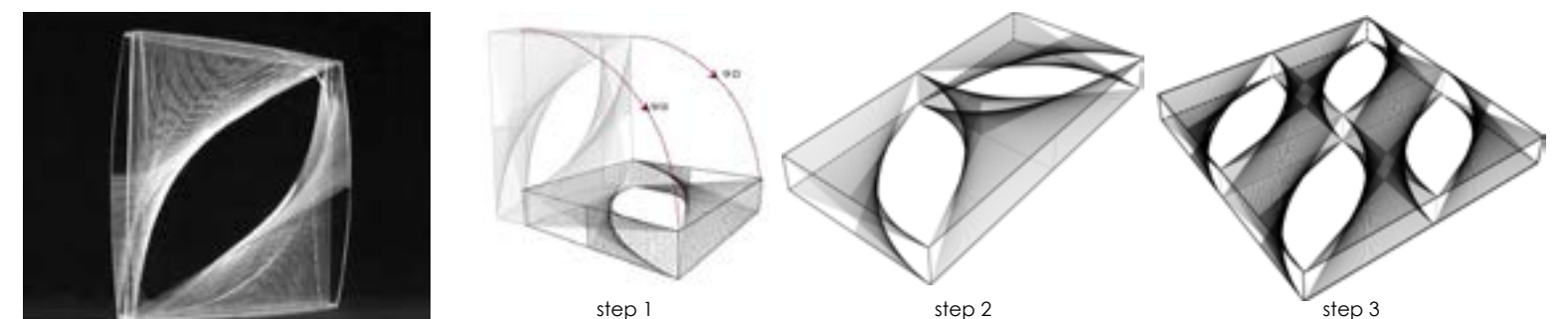
What Naum Gabo has done in this work is the integration of Art and Mathematics which we might have done unconsciously while we were students.

My structural components are as follows:

The weaved straight lines

The inner page that plays a vital roll The building method

It is shaped by the usage of single thread & Outer frame



Chang Linear construction in space the sides