

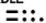
Orig 17229

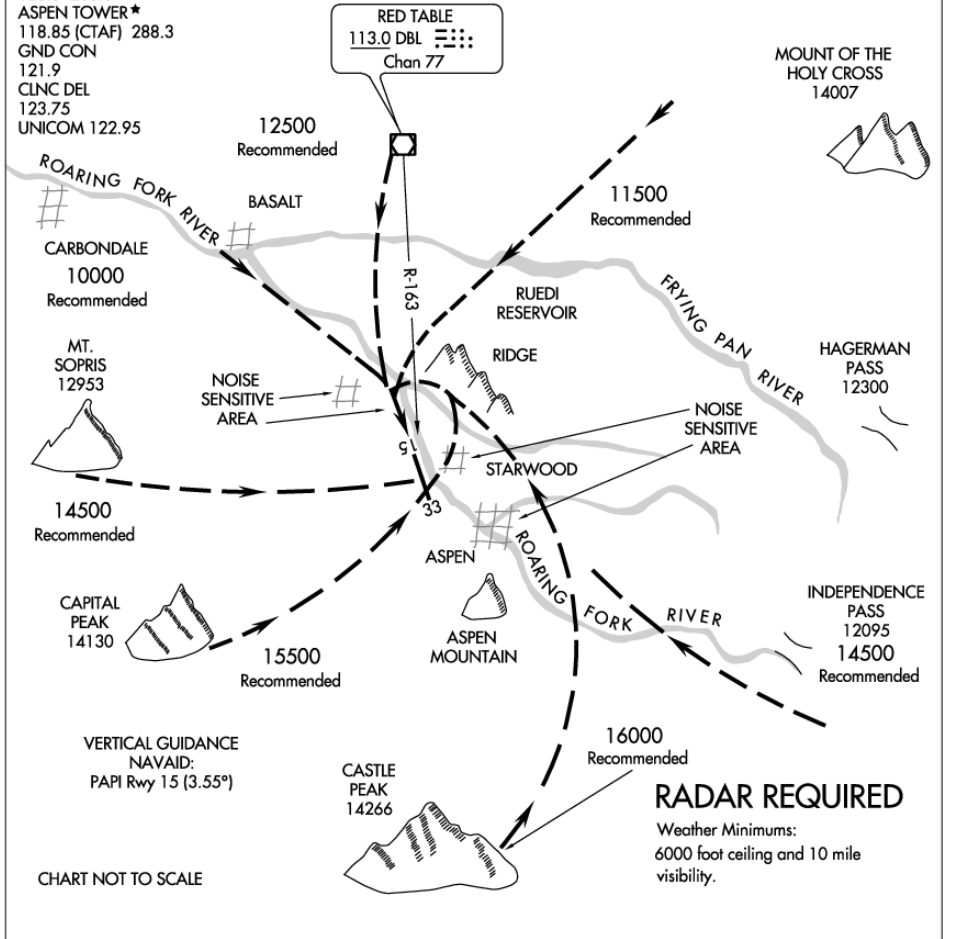
AL-5889 (FAA)

ROARING FORK VISUAL RWY 15

ASPEN-PITKIN COUNTY/SARDY FIELD (A5E)
ASPEN, COLORADO

ATIS 120.4
 ASPEN APP CON *
 123.8 288.3
 ASPEN TOWER *
 118.85 (CTAF) 288.3
 GND CON
 121.9
 CLNC DEL
 123.75
 UNICOM 122.95

RED TABLE
 113.0 DBL 
 Chan 77



06 DEC 2018 to 03 JAN 2019

06 DEC 2018 to 03 JAN 2019

ROARING FORK VISUAL RWY 15

Procedure not authorized at night.

When visual approaches to Runway 15 are in progress, clearances will be given utilizing in part the following phraseology:

"(IDENT) cleared for a ROARING FORK VISUAL Approach to Runway 15."

ROARING FORK VISUAL RWY 15

Orig 16NOV89

39°13'N-106°52'W

ASPEN, COLORADO
ASPEN-PITKIN COUNTY/SARDY FIELD (A5E)