

TEAM FOOTBALL



2023
CATALOGUE
English



MOVE TO ZERO

Helping protect the future of sport for all athletes*

Move to Zero is Nike's journey toward zero carbon and zero waste to help protect the future of sport. We exist to serve athletes everywhere and that's why we're on a mission to help ensure a healthy planet. For us, there is no finish line.

Niketeamfootball.com will now display a sunburst logo next to products made with sustainable materials. Look for this logo to find products made with at least 50% sustainable materials by weight, exclusive of trims.

Sustainable materials include recycled polyester or organic cotton. Recycled polyester reduces carbon emissions and waste. Organic cotton is grown without synthetic fertilizers and with less water than conventional cotton.

For more information on Nike Sustainability please visit nike.com/sustainability or purpose.nike.com.



INDEX

MATCHDAY	4
TRAINING	71
LIFESTYLE	167
EQUIPMENT	197

MATCHDAY



 Sustainable materials



New

Vaporknit IV Jersey

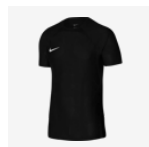
Lifecycle

January 2023 - December 2024

Futures only

Available in

XS - S - M - L - XL - 2XL - 3XL



DR0666-010
Black / Black /
Black / (White)



DR0666-100
White / White /
White / (Black)



DR0666-463
Royal Blue /
Royal Blue /
Obsidian /
(White)




DR0666-657
University Red /
University Red /
Bright Crimson /
(White)

Product Features

- 100% Polyester
- Nike Dri-FIT ADV technology combines moisture-wicking fabric with advanced engineering and features to help you stay dry and comfortable
- Breathable knit fabric helps keep you cool while reducing cling against your skin
- Lightweight design has ribbed insets and plenty of stretch to let you move without restrictions
- Moisture-wicking design helps keep you dry and cool under match-day pressure
- Heat-transfer silicone Swoosh design
- Machine wash



 Sustainable materials



New Strike III Jersey

Lifecycle

January 2023 - December 2024

Available in

XS - S - M - L - XL - 2XL - 3XL



DR0889-010
Black / Black /
Black / (White)



DR0889-011
Black / Volt /
Volt / (White)



DR0889-052
Pewter Grey /
Black / Black /
(White)



DR0889-100
White / White /
White / (Black)



DR0889-411
Midnight Navy /
Photo Blue /
Photo Blue /
(White)




DR0889-463
Royal Blue /
Obsidian /
Obsidian /
(White)



DR0889-657
University Red /
Bright Crimson /
Bright Crimson /
(White)

Product Features

- 100% Polyester
- Nike Dri-FIT technology moves sweat away from your skin for quicker evaporation, helping you stay dry and comfortable
- Sweat-wicking fabric works with breathable mesh to help keep you cool and composed during fast-paced play
- Breathable mesh at the back and under the arms
- Ribbed insets stretch with you to let you move without restrictions
- Slim, streamlined fit
- Embroidered Swoosh design
- Machine wash

 Sustainable materials



New

Strike III Jersey (Youth)

Lifecycle

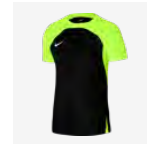
January 2023 - December 2024

Available in

XS - S - M - L - XL



DR0912-010
Black / Black /
Black / (White)



DR0912-011
Black / Volt /
Volt / (White)



DR0912-052
Pewter Grey /
Black / Black /
(White)



DR0912-100
White / White /
White / (Black)



DR0912-411
Midnight Navy /
Photo Blue /
Photo Blue /
(White)




DR0912-463
Royal Blue /
Obsidian /
Obsidian /
(White)

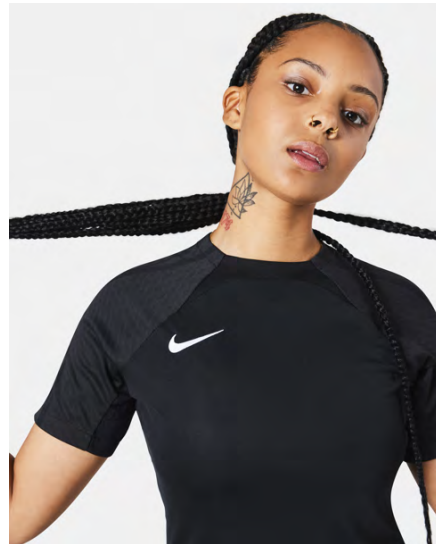
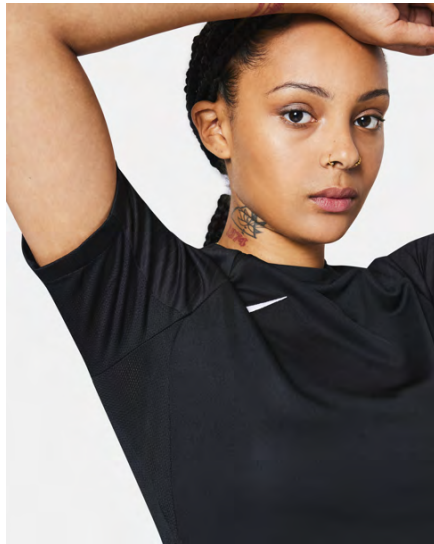
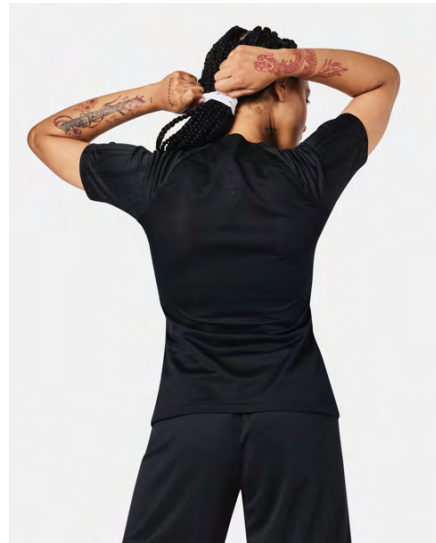


DR0912-657
University Red /
Bright Crimson /
Bright Crimson /
(White)

Product Features

- 100% Polyester
- Nike Dri-FIT technology moves sweat away from your skin for quicker evaporation, helping you stay dry and comfortable
- Sweat-wicking fabric works with breathable mesh to help keep you cool and composed during fast-paced play
- Breathable mesh at the back and under the arms
- Ribbed insets stretch with you to let you move without restrictions
- Slim, streamlined fit
- Embroidered Swoosh design
- Machine wash

 Sustainable materials



New

Women's Strike III Jersey

Lifecycle

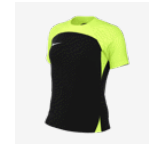
January 2023 - December 2024

Available in

XS - S - M - L - XL - 2XL



DR0909-010
Black / Black /
Black / (White)



DR0909-011
Black / Volt /
Volt / (White)



DR0909-052
Pewter Grey /
Black / Black /
(White)



DR0909-100
White / White /
White / (Black)



DR0909-411
Midnight Navy /
Photo Blue /
Photo Blue /
(White)



DR0909-463
Royal Blue /
Obsidian /
Obsidian /
(White)



DR0909-657
University Red /
Bright Crimson /
Bright Crimson /
(White)

Product Features

- 100% Polyester
- Nike Dri-FIT technology moves sweat away from your skin for quicker evaporation, helping you stay dry and comfortable
- Sweat-wicking fabric works with breathable mesh to help keep you cool and composed during fast-paced play
- Breathable mesh at the back and under the arms
- Ribbed insets stretch with you to let you move without restrictions
- Slim, streamlined fit
- Embroidered Swoosh design
- Machine wash

 Sustainable materials



New

Precision VI Jersey

Lifecycle

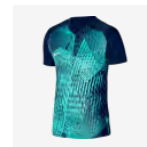
January 2023 - December 2024

Available in

XS - S - M - L - XL - 2XL - 3XL



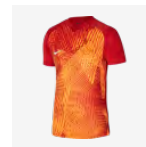
DR0944-010
Black / Cool
Grey / (White)



DR0944-410
Midnight Navy /
Hyper Turq /
(White)



DR0944-547
Court Purple /
Chlorine Blue /
(White)



DR0944-657
University Red /
Bright Citrus /
(White)




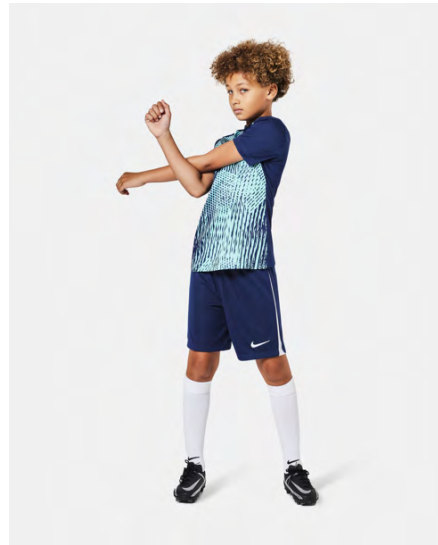
DR0944-702
Volt / Black /
(White)

Product Features

- 100% Polyester
- Nike Dri-FIT technology moves sweat away from your skin for quicker evaporation, helping you stay dry and comfortable
- Lightweight sweat-wicking fabric
- Breathable mesh back panel lets air flow to help keep you cool
- Slim, streamlined fit
- Embroidered Swoosh design
- Machine wash



 Sustainable materials



New

Precision VI Jersey (Youth)

Lifecycle

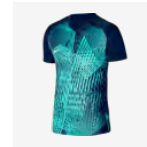
January 2023 - December 2024

Available in

XS - S - M - L - XL



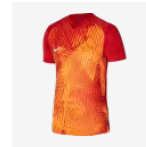
DR0950-010
Black / Cool
Grey / (White)



DR0950-410
Midnight Navy /
Hyper Turq /
(White)



DR0950-547
Court Purple /
Chlorine Blue /
(White)



DR0950-657
University Red /
Bright Citrus /
(White)



DR0950-702
Volt / Black /
(White)

Product Features

- 100% Polyester
- Nike Dri-FIT technology moves sweat away from your skin for quicker evaporation, helping you stay dry and comfortable
- Lightweight sweat-wicking fabric
- Breathable mesh back panel lets air flow to help keep you cool
- Slim, streamlined fit
- Embroidered Swoosh design
- Machine wash



 Sustainable materials



New Trophy V Jersey

Lifecycle

January 2023 - December 2025

Available in

XS - S - M - L - XL - 2XL - 3XL



DR0933-010
Black / White /
White / (White)



DR0933-052
Pewter Grey /
Bright Crimson /
Bright Crimson /
(Black)



DR0933-100
White / Black /
Black / (Black)



DR0933-302
Pine Green /
Gorge Green /
Gorge Green /
(White)



DR0933-354
Hyper Turq /
Chlorine Blue /
Chlorine Blue /
(White)



DR0933-410
Midnight Navy /
Photo Blue /
Photo Blue /
(White)



DR0933-463
Royal Blue /
Midnight Navy /
Midnight Navy /
(White)



DR0933-547
Court Purple /
Black / Black /
(White)



DR0933-657
University Red /
Team Red /
Team Red /
(White)




DR0933-719
Tour Yellow /
University Gold /
University Gold /
(Black)



DR0933-819
Safety Orange /
Team Orange /
Safety Orange /
(Black)

Product Features

- 100% Polyester
- Nike Dri-FIT technology moves sweat away from your skin for quicker evaporation, helping you stay dry and comfortable
- Slim, streamlined fit to keep the air flowing and distractions low
- Breathable mesh teams with lightweight knit fabric
- Mesh back panel lets air flow to help keep you cool
- Ribbed inset at neck
- Embroidered Swoosh design
- Machine wash

 Sustainable materials



New

Trophy V Jersey (Youth)

Lifecycle

January 2023 - December 2025

Available in

XS - S - M - L - XL



DR0942-010
Black / White /
White / (White)



DR0942-052
Pewter Grey /
Bright Crimson /
Bright Crimson /
(Black)



DR0942-100
White / Black /
Black / (Black)



DR0942-302
Pine Green /
Gorge Green /
Gorge Green /
(White)



DR0942-354
Hyper Turq /
Chlorine Blue /
Chlorine Blue /
(White)



DR0942-410
Midnight Navy /
Photo Blue /
Photo Blue /
(White)



DR0942-463
Royal Blue /
Midnight Navy /
Midnight Navy /
(White)



DR0942-547
Court Purple /
Black / Black /
(White)



DR0942-657
University Red /
Team Red /
Team Red /
(White)




DR0942-719
Tour Yellow /
University Gold /
University Gold /
(Black)



DR0942-819
Safety Orange /
Team Orange /
Safety Orange /
(Black)

Product Features

- 100% Polyester
- Nike Dri-FIT technology moves sweat away from your skin for quicker evaporation, helping you stay dry and comfortable
- Slim, streamlined fit to keep the air flowing and distractions low
- Breathable mesh teams with lightweight knit fabric
- Mesh back panel lets air flow to help keep you cool
- Ribbed inset at neck
- Embroidered Swoosh design
- Machine wash

 Sustainable materials



Carryover

Challenge IV Jersey S/S

Lifecycle

January 2022 - December 2023

Available in

S - M - L - XL - 2XL



DH7990-010
Black / Black /
White / (White)



DH7990-100
White / White /
Black / (Black)



DH7990-463
Royal Blue /
Royal Blue /
White / (White)



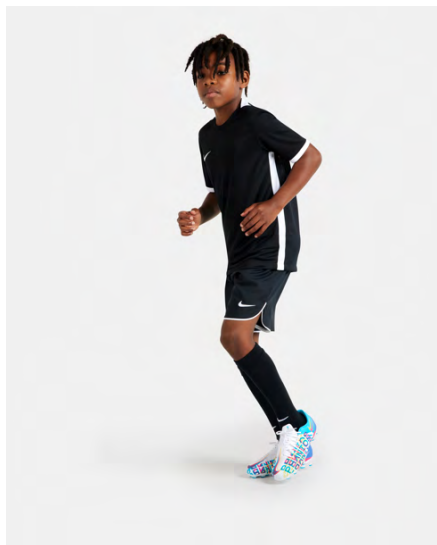
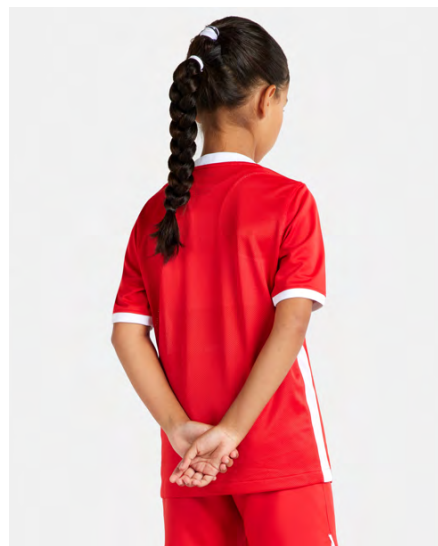
DH7990-657
University Red /
University Red /
White / (White)

Product Features

- 100% polyester
- Sweat-wicking fabric helps keep you dry and comfortable from the first whistle to the last minute
- Dri-FIT technology moves sweat from your skin for quicker evaporation—helping you stay dry and comfortable
- Mesh back panel offers lightweight breathability
- Slim fit for a tailored feel
- Machine wash



 Sustainable materials



Carryover

Challenge IV Jersey S/S (Youth)

Lifecycle

January 2022 - December 2023

Available in

XS - S - M - L - XL



DH8352-010
Black / Black /
White / (White)



DH8352-100
White / White /
Black / (Black)




DH8352-463
Royal Blue /
Royal Blue /
White / (White)



DH8352-657
University Red /
University Red /
White / (White)

Product Features

- 100% polyester
- Sweat-wicking fabric helps keep you dry and comfortable from the first whistle to the last minute
- Dri-FIT technology moves sweat from your skin for quicker evaporation—helping you stay dry and comfortable
- Mesh back panel offers lightweight breathability
- Slim fit for a tailored feel
- Machine wash

 Sustainable materials



Carryover Academy Jersey S/S

Lifecycle

January 2022 - December 2024

Available in

S - M - L - XL - 2XL



DH8031-010
Black / White /
(White)



DH8031-100
White /
University Red /
(University Red)



DH8031-102
White / Royal
Blue / (Royal
Blue)



DH8031-104
White / Black /
(Black)



DH8031-302
Pine Green /
Hyper Verde /
(White)



DH8031-411
Midnight Navy /
Hyper Crimson /
(White)



DH8031-463
Royal Blue /
White / (White)



DH8031-657
University Red /
White / (White)

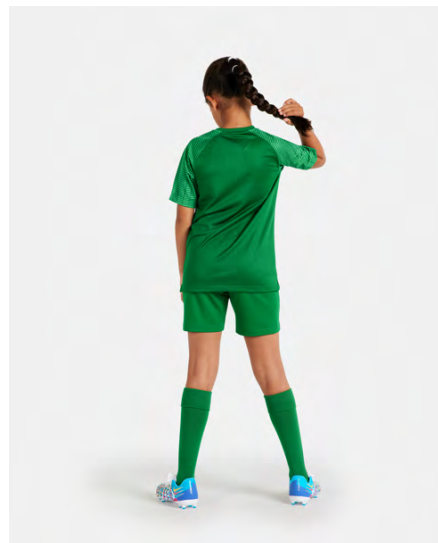


DH8031-719
Tour Yellow /
Black / (Black)

Product Features

- 100% polyester
- Sweat-wicking fabric to help keep you cool during your pre-match or training routine
- Dri-FIT technology helps you stay dry, comfortable & focused
- Mesh back panel offers lightweight breathability
- Slim fit for a tailored feel
- Machine wash

 Sustainable materials



Carryover Academy Jersey S/S (Youth)

Lifecycle

January 2022 - December 2024

Available in

XS - S - M - L - XL



DH8369-010
Black / White /
(White)



DH8369-100
White /
University Red /
(University Red)



DH8369-102
White / Royal
Blue / (Royal
Blue)



DH8369-104
White / Black /
(Black)



DH8369-302
Pine Green /
Hyper Verde /
(White)



DH8369-411
Midnight Navy /
Hyper Crimson /
(White)



DH8369-463
Royal Blue /
White / (White)



DH8369-657
University Red /
White / (White)




DH8369-719
Tour Yellow /
Black / (Black)

Product Features

- 100% polyester
- Sweat-wicking fabric to help keep you cool during your pre-match or training routine
- Dri-FIT technology helps you stay dry, comfortable & focused
- Mesh back panel offers lightweight breathability
- Slim fit for a tailored feel
- Machine wash



 Sustainable materials



Carryover Striped Division IV Jersey S/S

Lifecycle

January 2021 - December 2024

Available in

S - M - L - XL - 2XL



CW3813-060
Anthracite /
Black / (White)



CW3813-100
White / Black /
(Black)



CW3813-102
White / Royal
Blue / (Black)



CW3813-103
White /
University Blue /
(Black)



CW3813-104
White /
University Red /
(Black)



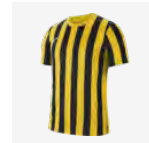
CW3813-302
Pine Green /
Black / (White)



CW3813-463
Royal Blue /
Black / (White)



CW3813-658
University Red /
Black / (White)




CW3813-719
Tour Yellow /
Black / (White)

Product Features

- This product is made with 100% recycled polyester fibers
- Nike Dri-FIT technology moves sweat from your skin for quicker evaporation—helping you stay dry and comfortable
- Lightweight mesh on the back adds breathability
- Slim fit for a tailored feel



 Sustainable materials



Carryover Striped Division IV Jersey S/S (Youth)

Lifecycle

January 2021 - December 2024

Available in

XS - S - M - L - XL



CW3819-060
Anthracite /
Black / (White)



CW3819-100
White / Black /
(Black)



CW3819-102
White / Royal
Blue / (Black)



CW3819-103
White /
University Blue /
(Black)



CW3819-104
White /
University Red /
(Black)



CW3819-302
Pine Green /
Black / (White)



CW3819-463
Royal Blue /
Black / (White)



CW3819-658
University Red /
Black / (White)



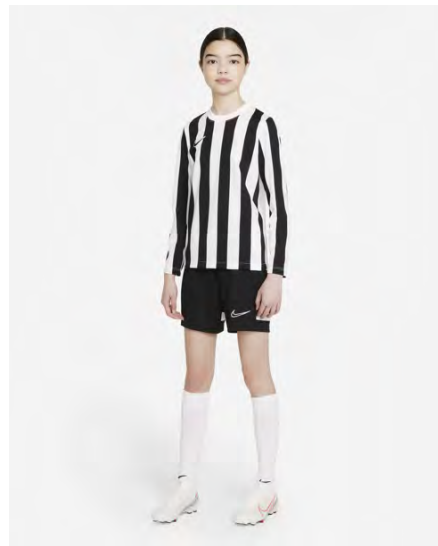
CW3819-719
Tour Yellow /
Black / (White)

Product Features

- This product is made with 100% recycled polyester fibers
- Nike Dri-FIT technology moves sweat from your skin for quicker evaporation—helping you stay dry and comfortable
- Lightweight mesh on the back adds breathability
- Standard fit for a relaxed, easy feel



 Sustainable materials



Carryover Striped Division IV Jersey L/S (Youth)

Lifecycle

January 2021 - December 2024

Available in

XS - S - M - L - XL



CW3825-060
Anthracite /
Black / (White)



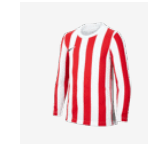
CW3825-100
White / Black /
(Black)



CW3825-102
White / Royal
Blue / (Black)



CW3825-103
White /
University Blue /
(Black)



CW3825-104
White /
University Red /
(Black)



CW3825-302
Pine Green /
Black / (White)



CW3825-463
Royal Blue /
Black / (White)



CW3825-658
University Red /
Black / (White)



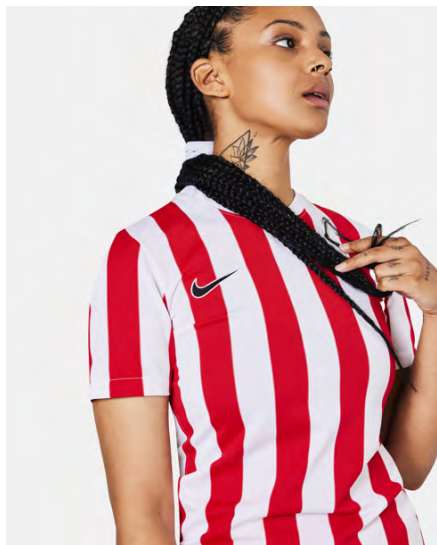
CW3825-719
Tour Yellow /
Black / (White)

Product Features

- This product is made with 100% recycled polyester fibers
- Nike Dri-FIT technology moves sweat from your skin for quicker evaporation—helping you stay dry and comfortable
- Lightweight mesh on the back adds breathability
- Standard fit for a relaxed, easy feel



 Sustainable materials



Carryover Women's Striped Division IV Jersey S/S

Lifecycle

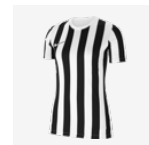
January 2021 - December 2024

Available in

XS - S - M - L - XL



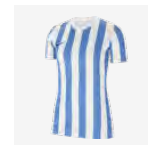
CW3816-060
Anthracite /
Black / (White)



CW3816-100
White / Black /
(Black)



CW3816-102
White / Royal
Blue / (Black)



CW3816-103
White /
University Blue /
(Black)



CW3816-104
White /
University Red /
(Black)



CW3816-302
Pine Green /
Black / (White)



CW3816-463
Royal Blue /
Black / (White)



CW3816-658
University Red /
Black / (White)




CW3816-719
Tour Yellow /
Black / (White)

Product Features

- This product is made with 100% recycled polyester fibers
- Nike Dri-FIT technology moves sweat from your skin for quicker evaporation—helping you stay dry and comfortable
- Lightweight mesh on the back adds breathability
- Standard fit for a relaxed, easy feel



 Sustainable materials



Carryover Park Derby III Jersey S/S

Lifecycle

January 2021 - December 2023

Available in

S - M - L - XL - 2XL



CW3826-010
Black / Jersey
Gold / (White)



CW3826-303
Pine Green /
Tour Yellow /
(White)



CW3826-410
Midnight Navy /
Tour Yellow /
(White)



CW3826-464
Royal Blue /
University Red /
(White)



CW3826-547
Court Purple /
White / (White)



CW3826-658
University Red /
Midnight Navy /
(White)



CW3826-677
Team Red /
University Blue /
(White)



CW3826-720
Tour Yellow /
Royal Blue /
(White)

Product Features

- This product is made with 100% recycled polyester fibers
- Dri-FIT technology helps you stay dry and comfortable
- V-neck collar is taped for a smooth feel against the skin
- Mesh on the back and sides provides additional breathability
- Slim fit for a tailored feel



 Sustainable materials



Carryover Park Derby III Jersey S/S (Youth)

Lifecycle

January 2021 - December 2023

Available in

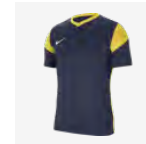
XS - S - M - L - XL



CW3833-010
Black / Jersey
Gold / (White)



CW3833-303
Pine Green /
Tour Yellow /
(White)



CW3833-410
Midnight Navy /
Tour Yellow /
(White)



CW3833-464
Royal Blue /
University Red /
(White)



CW3833-547
Court Purple /
White / (White)



CW3833-658
University Red /
Midnight Navy /
(White)



CW3833-677
Team Red /
University Blue /
(White)



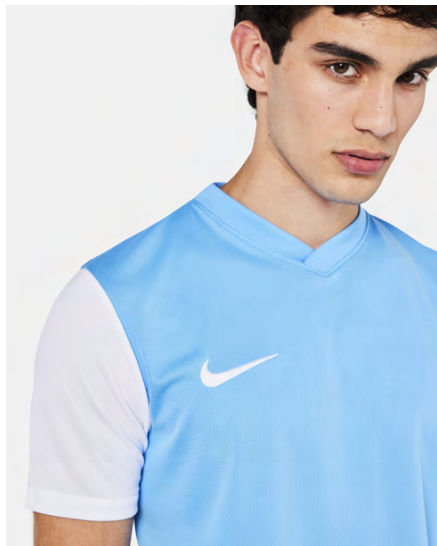
CW3833-720
Tour Yellow /
Royal Blue /
(White)

Product Features

- This product is made with 100% recycled polyester fibers
- Dri-FIT technology helps you stay dry and comfortable
- V-neck collar is taped for a smooth feel against the skin
- Mesh on the back and sides provides additional breathability
- Standard fit for a relaxed, easy feel



 Sustainable materials



Carryover

Tiempo Premier II Jersey S/S

Lifecycle

January 2022 - December 2027

Available in

S - M - L - XL - 2XL



DH8035-010
Black / White /
(White)



DH8035-052
Pewter Grey /
Black / (Black)



DH8035-100
White / Black /
(Black)



DH8035-101
White / Bright
Crimson / (Black)



DH8035-302
Pine Green /
White / (White)



DH8035-410
Midnight Navy /
White / (White)



DH8035-411
Midnight Navy /
Jersey Gold /
(White)



DH8035-412
University Blue /
White / (White)



DH8035-463
Royal Blue /
White / (White)



DH8035-547
Court Purple /
Volt / (White)



DH8035-657
University Red /
White / (White)



DH8035-702
Volt / Midnight
Navy / (Black)



DH8035-719
Tour Yellow /
Black / (Black)



DH8035-819
Safety Orange /
Black / (Black)

Product Features

- 100% polyester
- Dri-FIT technology moves sweat from your skin for quicker evaporation—helping you stay dry and comfortable
- Mesh on the back provides additional breathability
- Slim fit for a tailored feel
- Machine wash

 Sustainable materials



Carryover Tiempo Premier II Jersey S/S (Youth)

Lifecycle

January 2022 - December 2027

Available in

XS - S - M - L - XL



DH8389-010
Black / White /
(White)



DH8389-052
Pewter Grey /
Black / (Black)



DH8389-100
White / Black /
(Black)



DH8389-101
White / Bright
Crimson / (Black)



DH8389-302
Pine Green /
White / (White)



DH8389-410
Midnight Navy /
White / (White)



DH8389-411
Midnight Navy /
Jersey Gold /
(White)



DH8389-412
University Blue /
White / (White)



DH8389-463
Royal Blue /
White / (White)



DH8389-547
Court Purple /
Volt / (White)



DH8389-657
University Red /
White / (White)



DH8389-702
Volt / Midnight
Navy / (Black)




DH8389-719
Tour Yellow /
Black / (Black)



DH8389-819
Safety Orange /
Black / (Black)

Product Features

- 100% polyester
- Dri-FIT technology moves sweat from your skin for quicker evaporation—helping you stay dry and comfortable
- Mesh on the back provides additional breathability
- Slim fit for a tailored feel
- Machine wash

 Sustainable materials



Carryover

Women's Tiempo Premier II Jersey S/S

Lifecycle

January 2022 - December 2027

Available in

XS - S - M - L - XL



DH8233-010
Black / White /
(White)



DH8233-100
White / Black /
(Black)



DH8233-463
Royal Blue /
White / (White)



DH8233-547
Court Purple /
Volt / (White)



DH8233-657
University Red /
White / (White)



DH8233-702
Volt / Midnight
Navy / (Black)




DH8233-719
Tour Yellow /
Black / (Black)

Product Features

- 100% polyester
- Dri-FIT technology moves sweat from your skin for quicker evaporation—helping you stay dry and comfortable
- Mesh on the back provides additional breathability
- Slim fit for a tailored feel
- Machine wash



 Sustainable materials



Carryover Park VII Jersey L/S

Lifecycle

January 2020 - December 2025

Available in

S - M - L - XL - 2XL



BV6706-010
Black / (White)



BV6706-100
White / (Black)



BV6706-302
Pine Green /
(White)



BV6706-410
Midnight Navy /
(White)



BV6706-412
University Blue /
(White)



BV6706-463
Royal Blue /
(White)



BV6706-657
University Red /
(White)



BV6706-677
Team Red /
(White)



BV6706-702
Volt / (Black)




BV6706-719
Tour Yellow /
(Black)



BV6706-819
Safety Orange /
(Black)

Product Features

- This product is made with at least 75% recycled polyester fibers
- Dri-FIT technology helps keep you dry and comfortable
- Mesh back panel adds breathability
- Slim fit for a tailored feel

 Sustainable materials



Carryover

Park VII Jersey L/S (Youth)

Lifecycle

January 2020 - December 2025

Available in

XS - S - M - L - XL



BV6740-010
Black / (White)



BV6740-100
White / (Black)



BV6740-302
Pine Green /
(White)



BV6740-410
Midnight Navy /
(White)



BV6740-412
University Blue /
(White)



BV6740-463
Royal Blue /
(White)



BV6740-657
University Red /
(White)



BV6740-677
Team Red /
(White)



BV6740-702
Volt / (Black)



BV6740-719
Tour Yellow /
(Black)




BV6740-819
Safety Orange /
(Black)

Product Features

- This product is made with 100% recycled polyester fibers
- Dri-FIT technology helps keep you dry and comfortable
- Mesh back panel adds breathability
- Slim fit for a tailored feel



 Sustainable materials



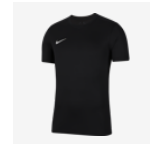
Carryover Park VII Jersey S/S

Lifecycle

January 2020 - December 2025

Available in

S - M - L - XL - 2XL



BV6708-010
Black / (White)



BV6708-302
Pine Green /
(White)



BV6708-354
Hyper Turq /
(Black)



BV6708-410
Midnight Navy /
(White)



BV6708-412
University Blue /
(White)



BV6708-463
Royal Blue /
(White)



BV6708-547
Court Purple /
(White)



New
BV6708-616
Vivid Pink /
(Black)



BV6708-635
Bright Crimson /
(Black)



BV6708-657
University Red /
(White)



BV6708-677
Team Red /
(White)



BV6708-702
Volt / (Black)



BV6708-719
Tour Yellow /
(Black)



BV6708-729
Jersey Gold /
(Black)



BV6708-819
Safety Orange /
(Black)



BV6708-100 White / (Black)



BV6708-101 White / (Pine Green)



BV6708-102 White / (Royal Blue)




BV6708-103 White / (University Red)

Product Features

- This product is made with at least 75% recycled polyester fibers
- Dri-FIT technology helps keep you dry and comfortable
- Mesh back panel adds breathability
- Slim fit for a tailored feel



 Sustainable materials



Carryover Park VII Jersey S/S (Youth)

Lifecycle

January 2020 - December 2025

Available in

XS - S - M - L - XL



BV6741-010
Black / (White)



BV6741-302
Pine Green /
(White)



BV6741-354
Hyper Turq /
(Black)



BV6741-410
Midnight Navy /
(White)



BV6741-412
University Blue /
(White)



BV6741-463
Royal Blue /
(White)



BV6741-547
Court Purple /
(White)



New
BV6741-616
Vivid Pink /
(Black)



BV6741-635
Bright Crimson /
(Black)



BV6741-657
University Red /
(White)



BV6741-677
Team Red /
(White)



BV6741-702
Volt / (Black)



BV6741-719
Tour Yellow /
(Black)



BV6741-729
Jersey Gold /
(Black)



BV6741-819
Safety Orange /
(Black)



BV6741-100 White / (Black)



BV6741-101 White / (Pine Green)




BV6741-102 White / (Royal Blue)

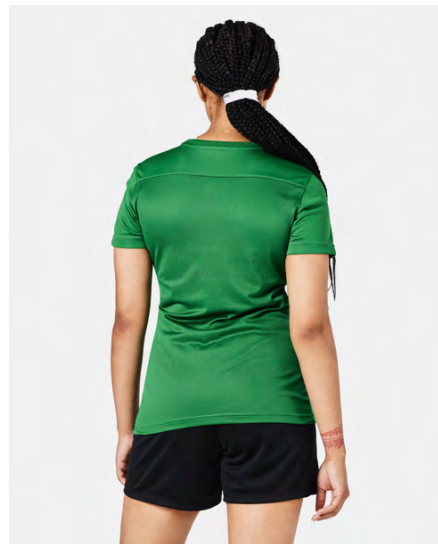
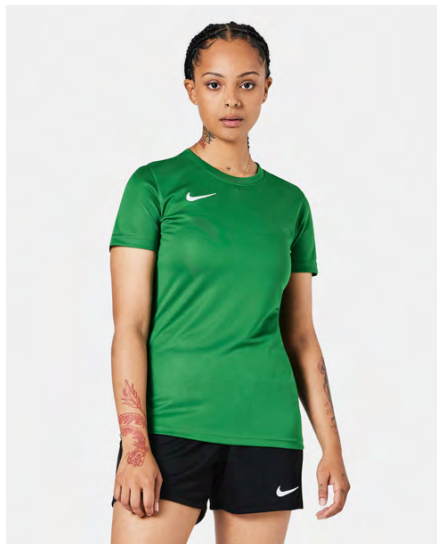


BV6741-103 White / (University Red)

Product Features

- This product is made with 100% recycled polyester fibers
- Dri-FIT technology helps keep you dry and comfortable
- Mesh back panel adds breathability
- Slim fit for a tailored feel

 Sustainable materials



Carryover

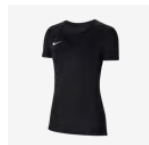
Women's Park VII Jersey

Lifecycle

January 2020 - December 2025

Available in

XS - S - M - L - XL



BV6728-010
Black / (White)



BV6728-100
White / (Black)



BV6728-341
Pine Green /
(White)



BV6728-354
Hyper Turq /
(Black)



BV6728-410
Midnight Navy /
(White)



BV6728-412
University Blue /
(White)



BV6728-463
Royal Blue /
(White)



BV6728-547
Court Purple /
(White)



BV6728-657
University Red /
(White)



BV6728-719
Tour Yellow /
(Black)

Product Features

- This product is made with 100% recycled polyester fibers
- Dri-FIT technology helps keep you dry and comfortable
- Mesh on the back adds breathability
- Slim fit for a tailored feel



 Sustainable materials



New Vaporknit IV Short

Lifecycle

January 2023 - December 2024

Futures only

Available in

XS - S - M - L - XL - 2XL - 3XL



DR0952-010
Black / Black /
(White)



DR0952-100
White / White /
(Black)



DR0952-463
Royal Blue /
Obsidian /
(White)




DR0952-657
University Red /
Bright Crimson /
(White)

Product Features

- 100% Polyester
- Nike Dri-FIT ADV technology combines moisture-wicking fabric with advanced engineering and features to help you stay dry and comfortable
- Breathable knit fabric helps keep you cool while reducing cling against your skin
- Moisture-wicking design helps keep you dry and cool under match-day pressure
- Lightweight fabric in a slim, streamlined fit
- 8" inseam
- Elastic waistband
- Heat-transfer silicone Swoosh design
- Machine wash



 Sustainable materials



New

League III Knit Short

Lifecycle

January 2023 - December 2026

Available in

XS - S - M - L - XL - 2XL - 3XL



DR0960-010
Black / White /
(White)



DR0960-052
Pewter Grey /
Black / (Black)



DR0960-100
White / Black /
(Black)



DR0960-302
Pine Green /
White / (White)



DR0960-410
Midnight Navy /
White / (White)



DR0960-463
Royal Blue /
White / (White)

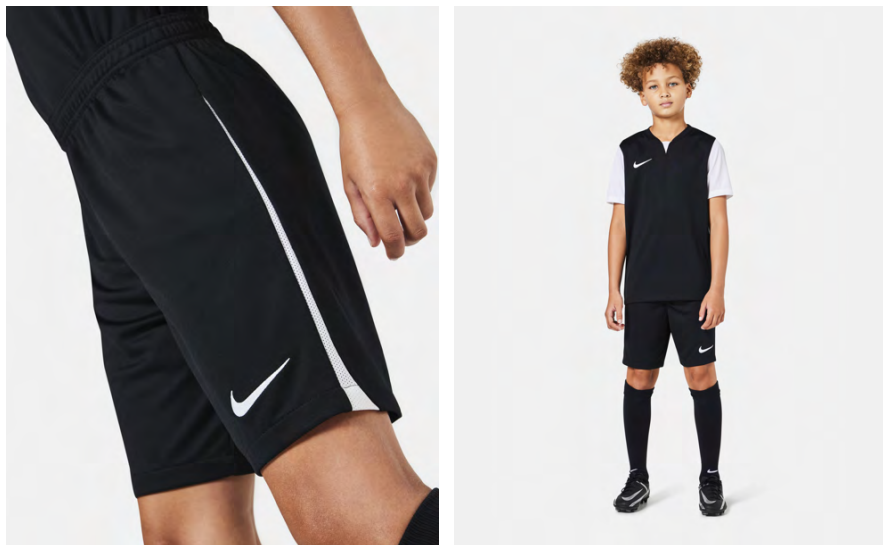


DR0960-657
University Red /
White / (White)

Product Features

- 100% Polyester
- Nike Dri-FIT technology moves sweat away from your skin for quicker evaporation, helping you stay dry and comfortable
- Slim, streamlined fit
- Breathable mesh insets at the sides help keep you cool
- 8" inseam
- Elastic waistband with drawcord
- Embroidered Swoosh design
- Machine wash

 Sustainable materials



New

League III Knit Short (Youth)

Lifecycle

January 2023 - December 2026

Available in

XS - S - M - L - XL



DR0968-010
Black / White /
(White)



DR0968-052
Pewter Grey /
Black / (Black)



DR0968-100
White / Black /
(Black)



DR0968-302
Pine Green /
White / (White)



DR0968-410
Midnight Navy /
White / (White)



DR0968-463
Royal Blue /
White / (White)



DR0968-657
University Red /
White / (White)

Product Features

- 100% Polyester
- Nike Dri-FIT technology moves sweat away from your skin for quicker evaporation, helping you stay dry and comfortable
- Slim, streamlined fit
- Breathable mesh insets at the sides help keep you cool
- 8" inseam
- Elastic waistband with drawcord
- Embroidered Swoosh design
- Machine wash

 Sustainable materials



Carryover Venom III Woven Short

Lifecycle

January 2021 - December 2023

Available in

S - M - L - XL - 2XL



CW3855-010
Black / White /
(White)



CW3855-100
White / Black /
(Black)



CW3855-302
Pine Green /
White / (White)



CW3855-463
Royal Blue /
White / (White)



CW3855-657
University Red /
White / (White)

Product Features

- Body: 85% Polyester/15% Spandex. Mesh: 100% Polyester
- Dri-FIT technology helps you stay dry and comfortable
- Mesh on the back and inner legs helps keep you cool when the game heats up
- Elastic waistband and hidden drawcord provide a personalized fit
- Standard fit for a relaxed, easy feel

 Sustainable materials



Carryover

Laser Woven Short V

Lifecycle

January 2022 - December 2025

Available in

S - M - L - XL - 2XL



DH8111-010
Black / White /
(White)



DH8111-100
White / Black /
(Black)



DH8111-302
Pine Green /
White / (White)



DH8111-410
Midnight Navy /
White / (White)



DH8111-412
University Blue /
White / (White)




DH8111-463
Royal Blue /
White / (White)



DH8111-657
University Red /
White / (White)

Product Features

- 100% polyester
- Sweat-wicking fabric and breathable mesh to keep you cool and composed
- Nike Dri-FIT technology moves sweat away from your skin for quicker evaporation, helping you stay dry and comfortable
- Mesh waistband and back panel offers lightweight breathability
- Slim fit for a tailored feel
- Machine wash

 Sustainable materials



Carryover Laser Woven Short V (Youth)

Lifecycle

January 2022 - December 2025

Available in

XS - S - M - L - XL



DH8408-010
Black / White /
(White)



DH8408-100
White / Black /
(Black)



DH8408-302
Pine Green /
White / (White)



DH8408-410
Midnight Navy /
White / (White)



DH8408-412
University Blue /
White / (White)



DH8408-463
Royal Blue /
White / (White)

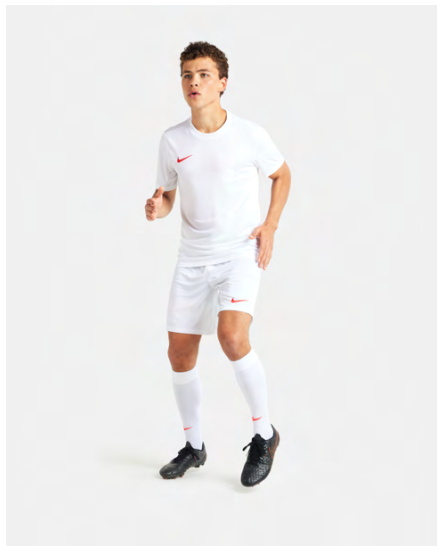


DH8408-657
University Red /
White / (White)

Product Features

- 100% polyester
- Sweat-wicking fabric and breathable mesh to keep you cool and composed
- Nike Dri-FIT technology moves sweat away from your skin for quicker evaporation, helping you stay dry and comfortable
- Mesh waistband and back panel offers lightweight breathability
- Slim fit for a tailored feel
- Machine wash

 Sustainable materials



Carryover Park III Knit Short

Lifecycle

January 2020 - December 2025

Available in

S - M - L - XL - 2XL



BV6855-010
Black / (White)



BV6855-017
Pewter Grey /
(Black)



BV6855-302
Pine Green /
(White)



BV6855-354
Hyper Turq /
(Black)



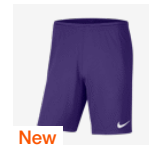
BV6855-410
Midnight Navy /
(White)



BV6855-412
University Blue /
(White)



BV6855-463
Royal Blue /
(White)



New
BV6855-547
Court Purple /
(White)



BV6855-635
Bright Crimson /
(Black)



BV6855-657
University Red /
(White)



BV6855-677
Team Red /
(White)



BV6855-702
Volt / (Black)



BV6855-719
Tour Yellow /
(Black)



BV6855-739
University Gold /
(Black)



BV6855-819
Safety Orange /
(Black)



BV6855-100 White / (Black)



BV6855-102 White / (Pine Green)




BV6855-103 White / (University Red)



BV6855-104 White / (Royal Blue)

Product Features

- This product is made with 100% recycled polyester fibers
- Dri-FIT technology helps you stay dry, comfortable and focused
- Stretchy waistband is lined with mesh for breathability
- Slim fit for a tailored feel

 Sustainable materials



Carryover
Park III Knit Short (Youth)

Lifecycle

January 2020 - December 2025


Available in

XS - S - M - L - XL

					
BV6865-010 Black / (White)	BV6865-017 Pewter Grey / (Black)	BV6865-100 White / (Black)	BV6865-302 Pine Green / (White)	BV6865-354 Hyper Turq / (Black)	BV6865-410 Midnight Navy / (White)
		 New			
BV6865-412 University Blue / (White)	BV6865-463 Royal Blue / (White)	BV6865-547 Court Purple / (White)	BV6865-635 Bright Crimson / (Black)	BV6865-657 University Red / (White)	BV6865-677 Team Red / (White)
					
BV6865-702 Volt / (Black)	BV6865-719 Tour Yellow / (Black)	BV6865-739 University Gold / (Black)	BV6865-819 Safety Orange / (Black)		

Product Features

- This product is made with 100% recycled polyester fibers
- Dri-FIT technology helps you stay dry, comfortable and focused
- Stretchy waistband is lined with mesh for breathability
- Slim fit for a tailored feel

 Sustainable materials



Carryover

Women's Park III Knit Short

Lifecycle

January 2020 - December 2025

Available in

XS - S - M - L - XL



BV6860-010
Black / (White)



BV6860-100
White / (Black)



BV6860-410
Midnight Navy /
(White)



BV6860-412
University Blue /
(White)



BV6860-463
Royal Blue /
(White)



New
BV6860-547
Court Purple /
(White)



BV6860-657
University Red /
(White)



BV6860-677
Team Red /
(White)



BV6860-719
Tour Yellow /
(Black)

Product Features

- This product is made with 100% recycled polyester fibers
- Dri-FIT technology helps you stay dry, comfortable and focused
- Stretchy waistband is lined with mesh for breathability
- Slim fit for a tailored feel



Carryover

Park Little Kids Set

Lifecycle

January 2020 - December 2023

Available in

XS - S - M - L - XL



CD2244-010
Black / Black /
(White)



CD2244-100
White / White /
(Black)



CD2244-302
Pine Green /
Pine Green /
(White)



CD2244-410
Midnight Navy /
Midnight Navy /
(White)



CD2244-463
Royal Blue /
Royal Blue /
(White)



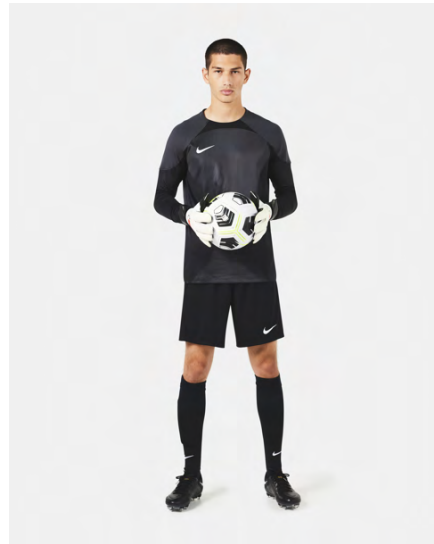
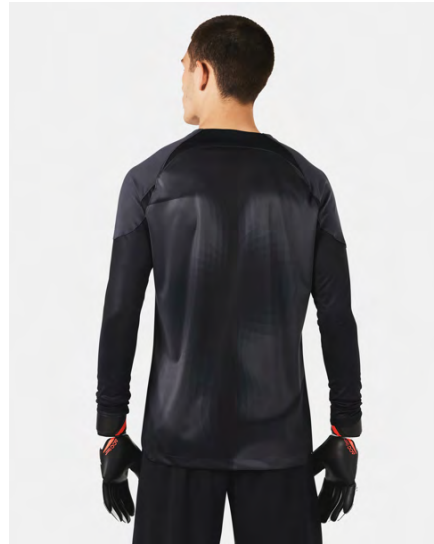
CD2244-657
University Red /
Unvred / (White)

Product Features

- 100% Polyester
- Dri-FIT technology helps keep you dry and comfortable
- Mesh on the back of the jersey creates ventilation
- Stretchy waistband on the shorts is lined with mesh for breathability
- Standard fit for a relaxed, easy feel



 Sustainable materials



Carryover Gardien IV Goalkeeper L/S

Lifecycle

January 2022 - December 2023

Available in

S - M - L - XL - 2XL



DH7967-060
Anthracite /
Black / (White)



DH7967-719
Tour Yellow /
University Gold /
(Black)




DH7967-819
Safety Orange /
Orange Trance /
(Black)

Product Features

- 100% polyester
- Advanced sweat-wicking fabric to keep you cool and composed for every shot on goal
- Nike Dri-FIT ADV technology combines moisture-wicking fabric with advanced engineering to help you stay dry and comfortable
- Knit fabric throughout high-heat areas provides additional breathability
- Flexible fabric gives you the freedom to make every save
- Machine wash



 Sustainable materials



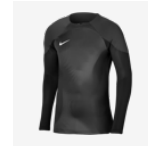
Carryover Gardien IV Goalkeeper L/S (Youth)

Lifecycle

January 2022 - December 2023

Available in

XS - S - M - L - XL



DH8346-060
Anthracite /
Black / (White)



DH8346-719
Tour Yellow /
University Gold /
(Black)



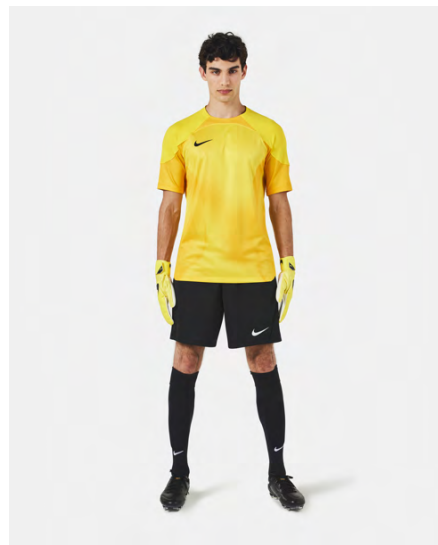
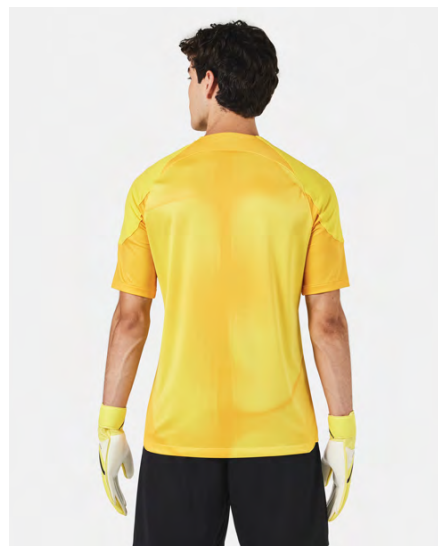
DH8346-819
Safety Orange /
Orange Trance /
(Black)

Product Features

- 100% polyester
- Advanced sweat-wicking fabric to keep you cool and composed for every shot on goal
- Nike Dri-FIT ADV technology combines moisture-wicking fabric with advanced engineering to help you stay dry and comfortable
- Knit fabric throughout high-heat areas provides additional breathability
- Flexible fabric gives you the freedom to make every save
- Machine wash



 Sustainable materials



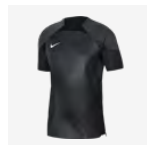
Carryover Gardien IV Goalkeeper S/S

Lifecycle

January 2022 - December 2023

Available in

S - M - L - XL - 2XL



DH7760-060
Anthracite /
Black / (White)



DH7760-719
Tour Yellow /
University Gold /
(Black)



DH7760-819
Safety Orange /
Orange Trance /
(Black)

Product Features

- 100% polyester
- Advanced sweat-wicking fabric to keep you cool and composed for every shot on goal
- Nike Dri-FIT ADV technology combines moisture-wicking fabric with advanced engineering to help you stay dry and comfortable
- Knit fabric throughout high-heat areas provides additional breathability
- Flexible fabric gives you the freedom to make every save
- Machine wash





Carryover Park IV GK Jersey L/S

Lifecycle

January 2020 - December 2025

Available in

S - M - L - XL - 2XL



CJ6066-010
Black / White /
(White)



CJ6066-052
Pewter Grey /
White / (Black)



CJ6066-463
Royal Blue /
White / (White)



CJ6066-702
Volt / White /
(Black)



CJ6066-819
Safety Orange /
White / (Black)

Product Features

- 100% Polyester
- Mesh across the back helps keep you cool when the game heats up
- Dri-FIT technology helps keep you dry, comfortable and focused
- Mesh across the back provides added breathability
- Slim fit for a tailored feel



Carryover

Park IV GK Jersey L/S (Youth)

Lifecycle

January 2020 - December 2025

Available in

XS - S - M - L - XL



CJ6072-010
Black / White /
(White)



CJ6072-052
Pewter Grey /
White / (Black)



CJ6072-463
Royal Blue /
White / (White)



CJ6072-702
Volt / White /
(Black)



CJ6072-819
Safety Orange /
White / (Black)

Product Features

- 100% Polyester
- Mesh across the back helps keep you cool when the game heats up
- Dri-FIT technology helps keep you dry, comfortable and focused
- Mesh across the back provides added breathability
- Slim fit for a tailored feel





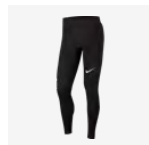
Carryover Padded Goalkeeper Tight

Lifecycle

January 2020 - December 2027

Available in

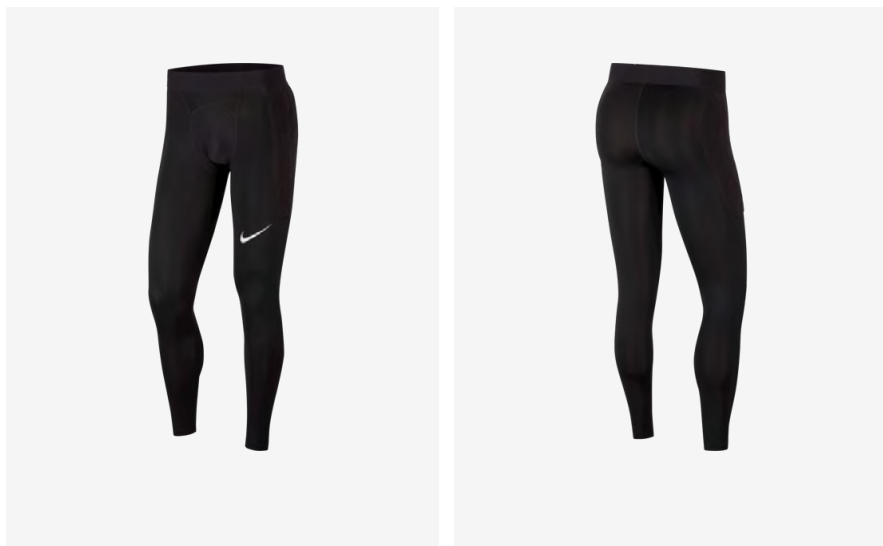
S - M - L - XL - 2XL



CV0045-010
Black / Black /
(White)

Product Features

- 80% Polyester/20% Spandex
- Articulated padding on the hips provides flexible impact absorption
- Dri-FIT technology helps keep you dry, comfortable and focused



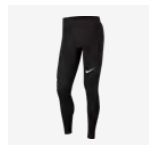
Carryover
**Padded Goalkeeper Tight
(Youth)**

Lifecycle

January 2020 - December 2027

Available in

XS - S - M - L - XL



CV0050-010
Black / Black /
(White)

Product Features

- 80% Polyester/20% Spandex
- Articulated padding on the hips provides impact absorption
- Dri-FIT technology helps keep you dry, comfortable and focused





Carryover Padded Goalkeeper Short

Lifecycle

January 2020 - December 2027

Available in

S - M - L - XL - 2XL



CV0053-010
Black / Black /
(White)

Product Features

- 80% Polyester/20% Spandex
- Articulated padding on the hips provides flexible impact absorption
- Dri-FIT technology helps keep you dry, comfortable and focused



Carryover
**Padded Goalkeeper Short
(Youth)**

**Lifecycle**

January 2020 - December 2027

Available in

XS - S - M - L - XL




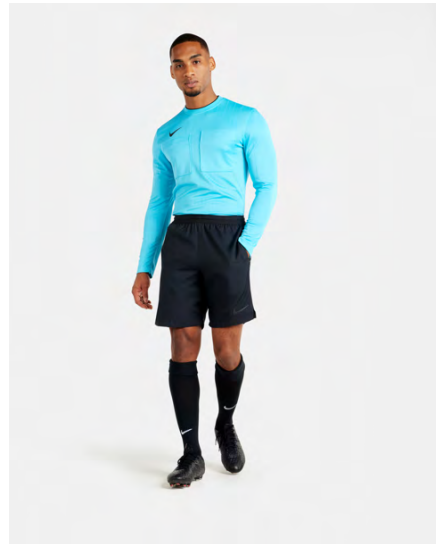
CV0057-010
Black / Black /
(White)

Product Features

- 80% Polyester/20% Spandex
- Articulated padding on the hips provides impact absorption
- Dri-FIT technology helps keep you dry, comfortable and focused



 Sustainable materials



Carryover Nike Dry Referee II Top L/S

Lifecycle

April 2022 - March 2026

Available in

XS - S - M - L - XL - 2XL



DH8027-010
Black / (White)



DH8027-329
Green Spark /
(Black)



DH8027-447
Chlorine Blue /
(Black)



DH8027-702
Volt / (Black)




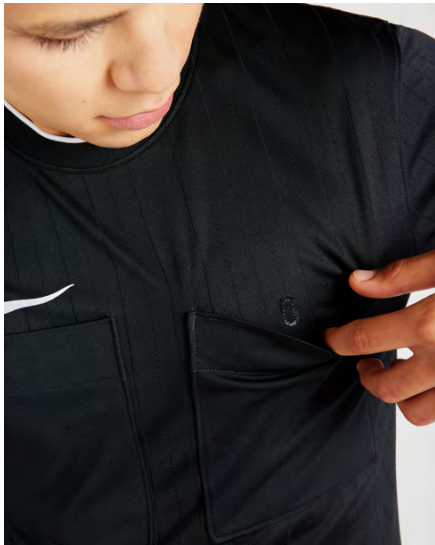
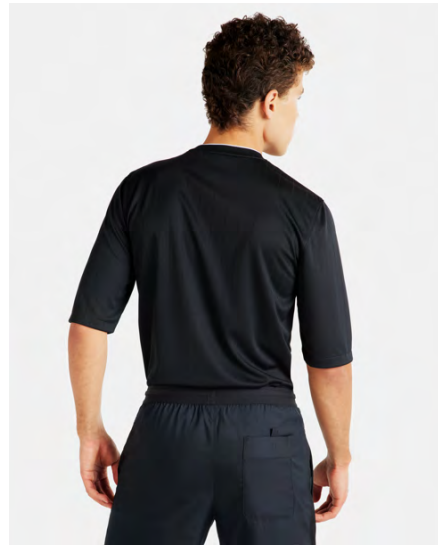
New
DH8027-819
Safety Orange /
(Black)

Product Features

- 100% polyester
- Sweat-wicking fabric to help keep you cool and comfortable, and 2 large pockets offer plenty of room for pens, penalty cards, and more
- Dri-FIT technology moves sweat from your skin for quicker evaporation—helping you stay dry and comfortable
- Pockets with hook-and loop closures let you keep your essentials secure on the field
- Slim fit for a tailored feel
- Machine wash



 Sustainable materials



Carryover

Nike Dry Referee II Top S/S

Lifecycle

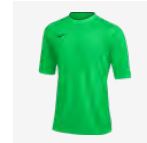
April 2022 - March 2026

Available in

XS - S - M - L - XL - 2XL



DH8024-010
Black / (White)



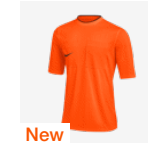
DH8024-329
Green Spark /
(Black)



DH8024-447
Chlorine Blue /
(Black)



DH8024-702
Volt / (Black)



New
DH8024-819
Safety Orange /
(Black)

Product Features

- 100% polyester
- Sweat-wicking fabric to help keep you cool and comfortable, and 2 large pockets offer plenty of room for pens, penalty cards, and more
- Dri-FIT technology moves sweat from your skin for quicker evaporation—helping you stay dry and comfortable
- Pockets with hook-and loop closures let you keep your essentials secure on the field
- Slim fit for a tailored feel
- Machine wash



 Sustainable materials



Carryover

Nike Dry Referee Short

Lifecycle

June 2018 - March 2026

Available in


S - M - L - XL - 2XL



AA0737-010
Black / Black /
(Anthracite)

Product Features

- This product is made with at least 50% recycled polyester fibers
- Nike Vaporknit technology combines lightweight cooling, reduced cling and precision fit
- Quick-drying, high-stretch yarn provides flexible comfort
- Precision fit conforms to your body for a streamlined feel

 Sustainable materials



Carryover

Women's Referee Shorts

Lifecycle

April 2022 - March 2026

Available in

XS - S - M - L - XL



DH8269-010
Black / Black /
(Anthracite)

Product Features

- This product is made with at least 75% recycled polyester fibers
- Sweat-wicking fabric to help keep you cool and comfortable for the full 90 minutes
- Dri-FIT technology moves sweat from your skin for quicker evaporation—helping you stay dry and comfortable
- Side pockets and a back pocket let you store your essentials
- Adjustable drawcord delivers a personalized fit
- Slim fit for a tailored feel
- Machine wash





Carryover Matchfit Sock

Lifecycle

January 2020 - December 2024

Available in

XS: 31-35 - S: 34-38 - M: 38-42 -
L: 42-46 - XL: 46-50



CV1956-010
Black /
Anthracite /
(White)



CV1956-100
White / White /
(Black)



CV1956-302
Pine Green /
Gorge Green /
(White)



CV1956-329
Green Spark /
(Black)



CV1956-354
Hyper Turq /
Hyper Turq /
(Black)



CV1956-412
University Blue /
Italy Blue /
(Midnight Navy)



CV1956-463
Royal Blue /
Midnight Navy /
(White)



CV1956-477
Team Royal /
(White)



CV1956-635
Bright Crimson /
Bright Crimson /
(Black)



CV1956-657
University Red /
Gym Red /
(White)



CV1956-719
Tour Yellow /
University Gold /
(Black)



CV1956-891
Team Orange /
(Black)

Product Features

- 92% Polyester/5% Cotton/3% Spandex
- Dri-FIT technology helps keep feet dry and comfortable
- Cushioning in high-wear areas adds durability and helps absorb impact
- Dynamic arch provides a supportive fit and feel
- Anatomically correct left/right design for a natural fit





Carryover Classic Sock II

Lifecycle

January 2017 - December 2024

Available in

XS: 31-35 - S: 34-38 - M: 38-42 -
L: 42-46 - XL: 46-50



SX5728-010
Black / (White)



SX5728-057
Pewter Grey /
(Black) / (Black)



SX5728-100
White / (Black)



SX5728-101
White / (Royal
Blue)



SX5728-103
White /
(University Red)



SX5728-104
White / (Pine
Green)



SX5728-302
Pine Green /
(White)



SX5728-411
Midnight Navy /
(White)



SX5728-412
University Blue /
(White)



SX5728-463
Royal Blue /
(White)



SX5728-545
Court Purple /
(White)



SX5728-648
University Red /
(White)



SX5728-670
Team Red /
(White)



SX5728-702
Volt / (Black)



SX5728-719
Tour Yellow /
(Black)



SX5728-816
Safety Orange /
(Black)

Product Features

- 97% Nylon/3% Spandex
- Dri-FIT technology helps keep feet dry and comfortable
- Cushioning in high-wear areas helps absorb impact
- Dynamic arch provides a supportive fit and feel



Carryover

Nike Matchfit Sleeve

Lifecycle

January 2021 - December 2024

Available in

S/M: 34-42 - L/XL: 42-50



CU6419-010
Black / (White)



CU6419-100
White / (Black)



CU6419-401
Royal Blue /
(White)



CU6419-410
Midnight Navy /
(White)



CU6419-657
University Red /
(White)

Product Features

- 95% polyester/5% spandex
- Sweat-wicking fabric helps keep you dry and comfortable
- Ribbed design stretches for a secure fit
- Comes in a pair





New

Strike Leg Sleeves

Lifecycle

January 2023 - December 2024

Available in

S/M: 34-42 - L/XL: 42-50



DH6621-010
Black / (White)



DH6621-100
White / (Black)



DH6621-410
Midnight Navy /
(White)



DH6621-463
Royal Blue /
(White)



DH6621-657
University Red /
(White)

Product Features

- 94% polyester/6% spandex
- Nike Dri-FIT technology moves sweat away from your skin for quicker evaporation, helping you stay dry and comfortable
- Stretch design fits comfortably over your shin guard
- 1 pair
- Machine wash



 Sustainable materials



Carryover Park First Layer

Lifecycle

January 2019 - December 2025

Available in

S - M - L - XL - 2XL



AV2609-010
Black / (White)



AV2609-057
Pewter Grey /
(White)



AV2609-100
White / (Cool
Grey)



AV2609-302
Pine Green /
(White)



AV2609-410
Midnight Navy /
(White)



AV2609-412
University Blue /
(White)



AV2609-463
Royal Blue /
(White)



AV2609-547
Court Purple /
(White)



AV2609-635
Bright Crimson /
(Black)



AV2609-657
University Red /
(White)



AV2609-702
Volt / (Black)



AV2609-719
Tour Yellow /
(Black)



AV2609-819
Safety Orange /
(White)

Product Features

- This product is made with 100% recycled polyester fibers
- Dri-FIT technology helps you stay dry, comfortable and focused
- Stretchy fabric with a smooth face provides a low-friction underlayer
- Invisible thumb loops stay hidden when not in use
- Tight fit gives a streamlined look and feel
- Raglan sleeves eliminate the shoulder seam to help you move freely

 Sustainable materials



Carryover Park First Layer (Youth)

Lifecycle

January 2019 - December 2025

Available in

XS - S - M - L - XL



AV2611-010
Black / (White)



AV2611-057
Pewter Grey /
(White)



AV2611-100
White / (Cool
Grey)



AV2611-302
Pine Green /
(White)



AV2611-329
Green Spark /
(Black)



AV2611-410
Midnight Navy /
(White)



AV2611-412
University Blue /
(White)



AV2611-463
Royal Blue /
(White)



AV2611-547
Court Purple /
(White)



AV2611-635
Bright Crimson /
(Black)



AV2611-657
University Red /
(White)



AV2611-702
Volt / (Black)



AV2611-719
Tour Yellow /
(Black)



AV2611-819
Safety Orange /
(White)

Product Features

- This product is made with 100% recycled polyester fibers
- Dri-FIT technology helps you stay dry, comfortable and focused
- Stretchy fabric with a smooth face provides a low-friction underlayer
- Invisible thumb loops stay hidden when not in use
- Tight fit gives a streamlined look and feel
- Raglan sleeves eliminate the shoulder seam to help you move freely





Carryover Strike Nike Pro Short

Lifecycle

January 2022 - December 2025

Available in

S - M - L - XL - 2XL



DH8128-010
Black / (White)



DH8128-100
White / (Black)



DH8128-302
Pine Green /
(White)



DH8128-410
Midnight Navy /
(White)



DH8128-412
University Blue /
(White)



DH8128-463
Royal Blue /
(White)



DH8128-547
Court Purple /
(White)



DH8128-635
Bright Crimson /
(Black)



DH8128-657
University Red /
(White)



DH8128-677
Team Red /
(White)



DH8128-702
Volt / (Black)



DH8128-719
Tour Yellow /
(Black)



DH8128-819
Safety Orange /
(Black)

Product Features

- 93% polyester/7% elastane
- Sweat-wicking fabric helps keep you cool and composed while fine-tuning your skills
- Nike Pro fabric provides a supportive layer that helps keep you cool when the action heats up
- Stretchy fabric has a compressive feel to keep you moving freely while training



New

Nike Pro Tights

Lifecycle

July 2021 - December 2023

Available in

S - S-T - M - M-T - L - L-T - XL - XL-T -
2XL - 2XL-T - 3XL - 3XL-T - 4XL - 4XL-T



DD1913-010
Black / White



DD1913-068
Iron Grey / Black
/ Black

Product Features

- Body: 90% polyester/10% spandex. Mesh: 92% polyester/8% spandex
- Nike Dri-FIT technology moves sweat away from your body for quicker evaporation, helping you stay dry and comfortable
- Mesh at the front pouch and upper seat lets air flow to help keep you cool
- Lightweight, stretchy fabric helps you move naturally during high-intensity sets
- Tight fit for a body-hugging feel
- Full length
- Machine wash

 Sustainable materials



New

Women's Park First layer

Lifecycle

January 2019 - December 2025

Available in

XS - S - M - L - XL



AV2610-010
Black / (White)



AV2610-057
Pewter Grey /
(White)



AV2610-100
White / (Cool
Grey)



AV2610-302
Pine Green /
(White)



AV2610-410
Midnight Navy /
(White)



AV2610-412
University Blue /
(White)



AV2610-463
Royal Blue /
(White)




AV2610-657
University Red /
(White)

Product Features

- This product is made with 100% recycled polyester fibers
- Park First Layer Jersey provides coverage that won't cut down your speed
- Dri-FIT technology helps you stay dry, comfortable and focused
- Stretchy fabric with a smooth face provides a low-friction underlayer
- Invisible Thumb Loops stay hidden when not in use
- Raglan sleeves eliminate the shoulder seam to help you move freely
- Swoosh design trademark is heat transferred on the center of the chest



 Sustainable materials



New

High-Support Non-Padded Adjustable Bra

Lifecycle

January 2022 - July 2023

Available in


XSA-C - SA-C - MA-B - LA-B - XLA-B -
1XA-B - 2XA-B - 3XA-B - XSD-E - SC-E
- MC-E - LC-E - XLC-E - 1XC-E - 2XC-E
- 3XC-E - XSF-G - SF-G



DD0428-010
Black / Black /
Smoke Grey /
White

Product Features

- 64% Polyester / 36% Elastane
- Nike Dri-FIT technology moves sweat away from your skin for quicker evaporation, helping you stay dry and comfortable
- The racerback design lets you move naturally through your workout
- Wide, comfortable straps help stabilize and support you as you work out
- Tight fit for a body-hugging feel
- Machine wash

 Sustainable materials



New

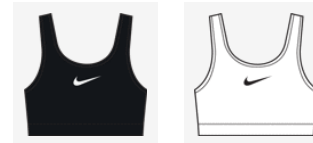
High-Support Non-Padded Sports Bra

Lifecycle

July 2023 - December 2024

Available in

XSA-C - SA-C - MA-B - LA-B - XLA-B -
1XA-B - 2XA-B - 3XA-B - XSD-E - SC-E
- MC-E - LC-E - XLC-E - 1XC-E - 2XC-E
- 3XC-E - XSF-G - SF-G




DX6815-010
Black / Iron Grey
/ White

DX6815-100
White / Black /
White

Product Features

- 64% Polyester / 36% Elastane
- Nike Dri-FIT technology moves sweat away from your skin for quicker evaporation, helping you stay dry and comfortable
- The adjustable bottom band and longer neckline, back and armholes make it easy to slip on and off while giving you a customized fit
- Interior mesh lining, mesh back panels and a back cutout keep things breezy
- With ultra-stretchy fabric that adapts to your needs in the moment and moves with you like a second skin, your bra will be the last thing on your mind while you focus on your warmup, reps and cool down
- Available as of Fall 2023



 Sustainable materials



Carryover Swoosh Medium-Support 1-Piece Pad Sports Bra

Lifecycle

April 2020 - December 2024

Available in

XS - S - M - L - XL - 2XL




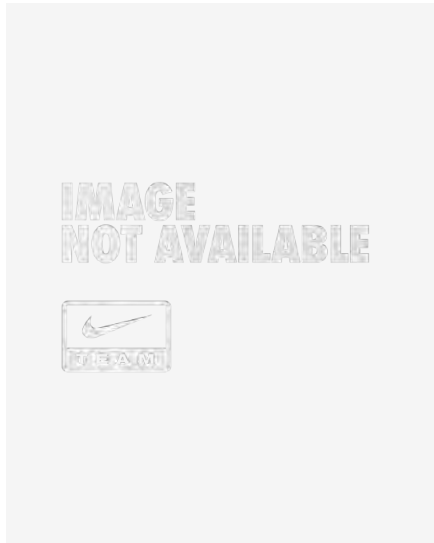
BV3636-010
Black / (White)

Product Features

- This product is made with at least 50% recycled polyester fibers
- Nike Pro fabric provides a sweat-wicking base layer of support to help you feel locked in and cool when the action heats up
- Stretchy fabric with a tight feel allows you to move naturally
- The snug elastic waistband is updated to be slightly higher and thicker for more support and is vented for breathability
- Double-layered mesh pouch is breathable
- Tight fit for a body-hugging feel



 Sustainable materials



New

Medium-Support Padded Bra

Lifecycle

July 2023 - December 2024

Available in

Not Available



DX6823-010
Black / (White)




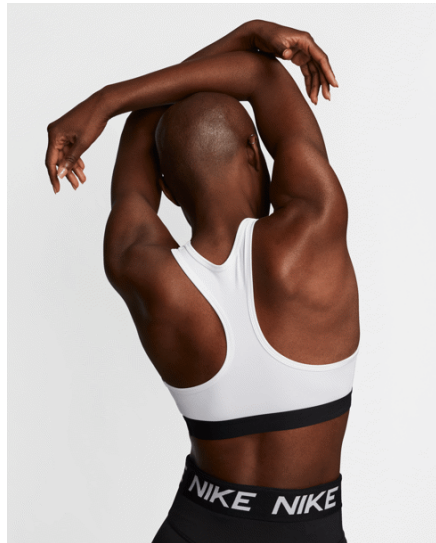
DX6823-100
White / (Black)

Product Features

- 72% Polyester/28% Elastane
- Nike Dri-FIT technology moves sweat away from your skin for quicker evaporation, helping you stay dry and comfortable
- Racerback straps help air flow through a high-heat area
- A mesh liner keeps things breezy and cool
- Smooth elastic waistband stays in place without pinching or binding
- Longer necklines, backs, and armholes make comfortably taking the bra on and off simple
- Two layers of breathable, lightweight fabric provide medium support
- Machine wash



 Sustainable materials



Carryover

Women's Victory Swoosh Medium-Support Sports Bra

Lifecycle

January 2020 - December 2024

Available in

XS - S - M - L - XL - 2XL



BV3900-010
White / Black /
(Black)



BV3900-100
Black / Black /
(White)

Product Features

- This product is made with at least 75% recycled polyester fibers
- Dri-FIT technology helps keep feet dry and comfortable
- Exposed elastic band resists slipping so it stays in place
- Tight fit for a body-hugging feel
- Non padded





Carryover

Women's Strike Nike Pro Short

Lifecycle

January 2022 - December 2025

Available in

XS - S - M - L - XL



DH8327-010
Black / (White)



DH8327-052
Pewter Grey /
(Black)



DH8327-100
White / (Black)



DH8327-302
Pine Green /
(White)



DH8327-410
Midnight Navy /
(White)



DH8327-412
University Blue /
(White)



DH8327-463
Royal Blue /
(White)



DH8327-657
University Red /
(White)



DH8327-677
Team Red /
(White)



DH8327-719
Tour Yellow /
(Black)



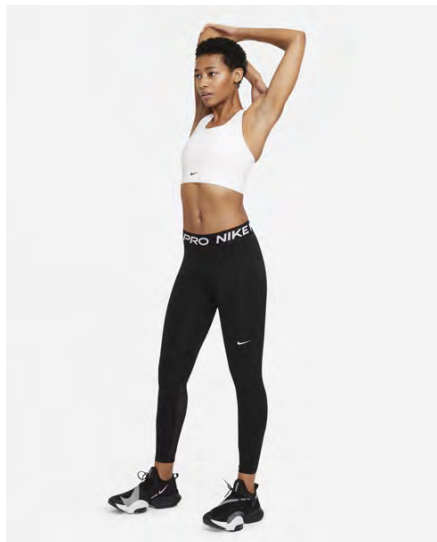
DH8327-819
Safety Orange /
(Black)

Product Features

- 93% polyester/7% elastane
- Sweat-wicking fabric helps keep you cool and composed while fine-tuning your skills
- Nike Pro fabric provides a supportive layer that helps keep you cool when the action heats up
- Stretchy fabric has a compressive feel to keep you moving freely while training
- Tight fit for a body-hugging feel
- Machine wash



 Sustainable materials



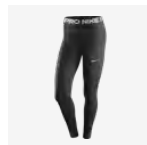
Carryover Mid-Rise Mesh-Paneled Leggings

Lifecycle

January 2021 - December 2023

Available in

S - M - L - XL - 2XL



CZ9779-010
Black / (White)

Product Features

- 83% polyester/17% spandex
- Nike Dri-FIT technology helps you stay dry, comfortable and focused
- A wide, smooth mid-rise waistband feels supportive around your core
- Ventilated mesh panels along the back of the lower legs create airflow for breathability
- This product is made with at least 50% recycled polyester fibers

 Sustainable materials



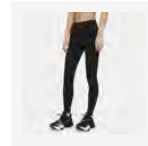
Carryover Mid-Rise Leggings

Lifecycle

January 2021 - December 2023

Available in

XS - S - M - L - XL - 2XL



DD0252-010
Black / (White)

Product Features

- 78-79% polyester/21-22% spandex
- Stretchy fabric with Dri-FIT technology moves sweat from your skin for quicker evaporation to help you stay cool and dry
- Seamless sides and a contoured V-shaped waistband give a smooth silhouette
- The design includes 2 hidden pockets in the mid-rise waistband to keep you ready for whatever you tackle in a day
- The pocket at the back is big enough to hold a phone
- Tight fit for a body-hugging feel
- Full length
- Material percentages may vary. Check label for actual content



TRAINING



 Sustainable materials



New Strike 23 Top

Lifecycle

January 2023 - December 2023

Futures only

Available in

XS - S - M - L - XL - 2XL



DR2276-010
Black /
Anthracite /
(White)



DR2276-100
White / Wolf
Grey / (Black)



DR2276-451
Obsidian / Royal
Blue / (White)



DR2276-452
Obsidian / Volt /
(White)



DR2276-463
Royal Blue /
Obsidian /
(White)



DR2276-657
University Red /
Black / (White)

Product Features

- 100% Polyester
- Nike Dri-FIT technology moves sweat away from your skin for quicker evaporation, helping you stay dry and comfortable
- Sweat-wicking fabric helps keep you cool and composed while you're fine-tuning your skills
- Mesh underarm panels
- Slim, streamlined fit
- Heat-transfer Swoosh design
- Machine wash

 Sustainable materials



New Strike 23 Top (Youth)

Lifecycle

January 2023 - December 2023

Futures only

Available in

XS - S - M - L - XL



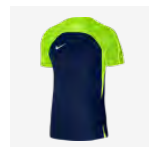
DR2287-010
Black /
Anthracite /
(White)



DR2287-100
White / Wolf
Grey / (Black)



DR2287-451
Obsidian / Royal
Blue / (White)



DR2287-452
Obsidian / Volt /
(White)



DR2287-463
Royal Blue /
Obsidian /
(White)

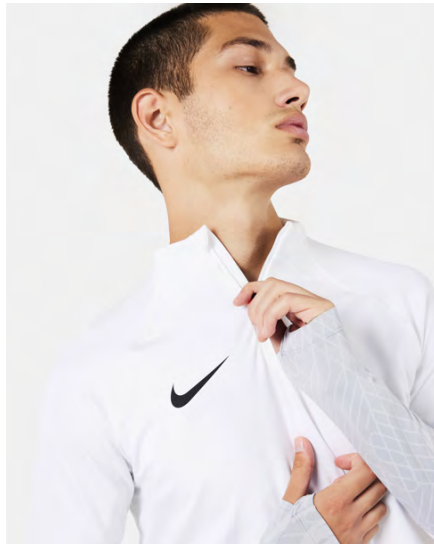


DR2287-657
University Red /
Black / (White)

Product Features

- 100% Polyester
- Nike Dri-FIT technology moves sweat away from your skin for quicker evaporation, helping you stay dry and comfortable
- Sweat-wicking fabric helps keep you cool and composed while you're fine-tuning your skills
- Mesh underarm panels
- Slim, streamlined fit
- Heat-transfer Swoosh design
- Machine wash

 Sustainable materials



New Strike 23 Drill Top

Lifecycle

January 2023 - December 2023

Futures only

Available in

XS - S - M - L - XL - 2XL



DR2294-010
Black / Black /
Anthracite /
(White)



DR2294-100
White / Wolf
Grey / White /
(Black)



DR2294-451
Obsidian /
Obsidian / Royal
Blue / (White)



DR2294-452
Obsidian / Volt /
Barely Volt /
(White)



DR2294-463
Royal Blue /
Obsidian / Royal
Blue / (White)



DR2294-657
University Red /
Black /
Anthracite /
(White)



DR2294-658
University Red /
University Red /
Bright Crimson /
(White)

Product Features

- Body: 91% Polyester/9% Spandex Panels: 94% Polyester/6% Spandex
- Nike Dri-FIT technology moves sweat away from your skin for quicker evaporation, helping you stay dry and comfortable
- Sweat-wicking fabric helps keep you cool and composed while you're fine-tuning your skills
- Stretch-knit fabric lets you move freely on or off the field
- Slim, streamlined fit
- 1/4-zip design
- Heat-transfer Swoosh design

 Sustainable materials



New
Strike 23 Drill Top (Youth)

Lifecycle

January 2023 - December 2023

Futures only

Available in

XS - S - M - L - XL



DR2304-010
Black / Black /
Anthracite /
(White)



DR2304-100
White / Wolf
Grey / White /
(Black)



DR2304-451
Obsidian /
Obsidian / Royal
Blue / (White)



DR2304-463
Royal Blue /
Obsidian / Royal
Blue / (White)



DR2304-657
University Red /
Black /
Anthracite /
(White)



DR2304-658
University Red /
University Red /
Bright Crimson /
(White)

Product Features

- Body: 91% Polyester/9% Spandex Panels: 94% Polyester/6% Spandex
- Nike Dri-FIT technology moves sweat away from your skin for quicker evaporation, helping you stay dry and comfortable
- Sweat-wicking fabric helps keep you cool and composed while you're fine-tuning your skills
- Stretch-knit fabric lets you move freely on or off the field
- Slim, streamlined fit
- 1/4-zip design
- Heat-transfer Swoosh design
- Machine wash





New
Strike 23 Knit Track Jacket

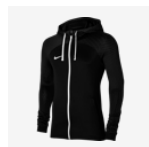
Lifecycle

January 2023 - December 2023

Futures only

Available in

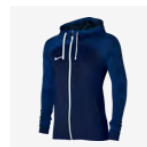
XS - S - M - L - XL - 2XL



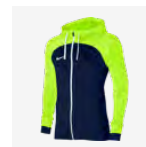
DR2571-010
 Black / Black /
 Anthracite /
 (White)



DR2571-100
 White / Wolf
 Grey / White /
 (Black)



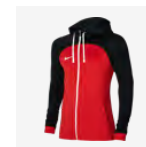
DR2571-451
 Obsidian /
 Obsidian / Royal
 Blue / (White)



DR2571-452
 Obsidian / Volt /
 Barely Volt /
 (White)



DR2571-463
 Royal Blue /
 Obsidian / Royal
 Blue / (White)



DR2571-657
 University Red /
 Black /
 Anthracite /
 (White)

Product Features

- Body/hood lining: 100% Polyester Panels: 94% Polyester/6% Spandex
- Nike Dri-FIT technology moves sweat away from your skin for quicker evaporation, helping you stay dry and comfortable
- Sweat-wicking fabric helps keep you cool and composed while you're fine-tuning your skills
- Knit fabric with a bit of stretch helps you move freely
- Ribbed cuffs help hold the sleeves in place while you move
- Slim, streamlined fit
- Drawcord at hood
- Zippered front pockets
- Full-zip design
- Heat-transfer Swoosh design

 Sustainable materials



New Strike 23 Knit Short

Lifecycle

January 2023 - December 2023

Futures only

Available in

XS - S - M - L - XL - 2XL




DR2314-010
Black /
Anthracite /
(White)

DR2314-451
Obsidian / Royal
Blue / (White)

Product Features

- 100% Polyester
- Nike Dri-FIT technology moves sweat away from your skin for quicker evaporation, helping you stay dry and comfortable
- Sweat-wicking fabric helps keep you cool and composed while you're fine-tuning your skills
- Mesh side panels let air flow to help keep you cool
- Slim, streamlined fit
- Elastic waistband with drawcord
- Heat-transfer Swoosh design
- Machine wash

 Sustainable materials



New Strike 23 Knit Short (Youth)

Lifecycle

January 2023 - December 2023

Futures only

Available in

XS - S - M - L - XL



DR2330-010
Black /
Anthracite /
(White)




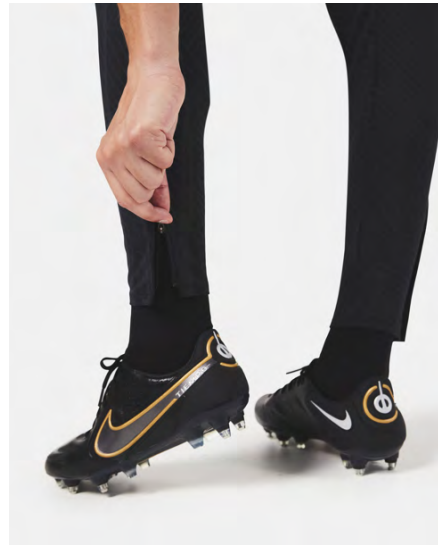
DR2330-451
Obsidian / Royal
Blue / (White)

Product Features

- 100% Polyester
- Nike Dri-FIT technology moves sweat away from your skin for quicker evaporation, helping you stay dry and comfortable
- Sweat-wicking fabric helps keep you cool and composed while you're fine-tuning your skills
- Mesh side panels let air flow to help keep you cool
- Slim, streamlined fit
- Elastic waistband with drawcord
- Heat-transfer Swoosh design
- Machine wash



 Sustainable materials



New
Strike 23 Knit Pant

Lifecycle

January 2023 - December 2023

Futures only

Available in

XS - S - M - L - XL - 2XL



DR2563-010
Black / Black /
Anthracite /
(White)




DR2563-451
Obsidian /
Obsidian / Royal
Blue / (White)

Product Features

- Body: 91% Polyester/9% Spandex Panels: 94% Polyester/6% Spandex Mesh: 100% Polyester
- Nike Dri-FIT technology moves sweat away from your skin for quicker evaporation, helping you stay dry and comfortable
- Sweat-wicking fabric helps keep you cool and composed while you're fine-tuning your skills
- Stretch-knit fabric lets you move freely on or off the field
- Zippers on the lower legs make it easy to change over cleats or shoes
- Elastic waistband with drawcord
- Front pockets
- Heat-transfer Swoosh design
- Slim, streamlined fit
- Machine wash



 Sustainable materials



New
Strike 23 Knit Pant (Youth)

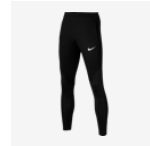
Lifecycle

January 2023 - December 2023

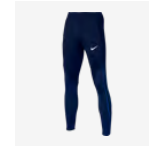
Futures only

Available in

XS - S - M - L - XL




DR2570-010
Black / Black /
Anthracite /
(White)



DR2570-451
Obsidian /
Obsidian / Royal
Blue / (White)

Product Features

- Body: 91% Polyester/9% Spandex Panels: 94% Polyester/6% Spandex Mesh: 100% Polyester
- Nike Dri-FIT technology moves sweat away from your skin for quicker evaporation, helping you stay dry and comfortable
- Sweat-wicking fabric helps keep you cool and composed while you're fine-tuning your skills
- Stretch-knit fabric lets you move freely on or off the field
- Zippers on the lower legs make it easy to change over cleats or shoes
- Elastic waistband with drawcord
- Front pockets
- Heat-transfer Swoosh design
- Slim, streamlined fit
- Machine wash

 Sustainable materials



New
Women's Strike 23 Top

Lifecycle

January 2023 - December 2023

Futures only

Available in

XS - S - M - L - XL - 2XL



DR2278-010
 Black /
 Anthracite /
 (White)

DR2278-100
 White / Wolf
 Grey / (Black)

DR2278-451
 Obsidian / Royal
 Blue / (White)

DR2278-452
 Obsidian / Volt /
 (White)

DR2278-463
 Royal Blue /
 Obsidian /
 (White)

DR2278-657
 University Red /
 Black / (White)

Product Features

- 100% Polyester
- Nike Dri-FIT technology moves sweat away from your skin for quicker evaporation, helping you stay dry and comfortable
- Sweat-wicking fabric helps keep you cool and composed while you're fine-tuning your skills
- Mesh underarm panels
- Slim, streamlined fit
- Heat-transfer Swoosh design
- Machine wash

 Sustainable materials



New Women's Strike 23 Drill Top

Lifecycle

January 2023 - December 2023

Futures only

Available in

XS - S - M - L - XL - 2XL



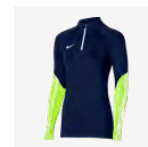
DR2296-010
Black / Black /
Anthracite /
(White)



DR2296-100
White / Wolf
Grey / White /
(Black)



DR2296-451
Obsidian /
Obsidian / Royal
Blue / (White)



DR2296-452
Obsidian / Volt /
Barely Volt /
(White)



DR2296-463
Royal Blue /
Obsidian / Royal
Blue / (White)

Product Features

- Body: 91% Polyester/9% Spandex Panels: 94% Polyester/6% Spandex
- Nike Dri-FIT technology moves sweat away from your skin for quicker evaporation, helping you stay dry and comfortable
- Sweat-wicking fabric helps keep you cool and composed while you're fine-tuning your skills
- Stretch-knit fabric lets you move freely on or off the field
- Slim, streamlined fit
- 1/4-zip design
- Heat-transfer Swoosh design
- Machine wash

New

Women's Strike 23 Knit Track Jacket



Lifecycle

January 2023 - December 2023

Futures only

Available in

XS - S - M - L - XL - 2XL



DR2573-010
Black / Black /
Anthracite /
(White)



DR2573-100
White / Wolf
Grey / White /
(Black)



DR2573-451
Obsidian /
Obsidian / Royal
Blue / (White)




DR2573-452
Obsidian / Volt /
Barely Volt /
(White)

Product Features

- Body/hood lining: 100% Polyester Panels: 94% Polyester/6% Spandex
- Nike Dri-FIT technology moves sweat away from your skin for quicker evaporation, helping you stay dry and comfortable
- Sweat-wicking fabric helps keep you cool and composed while you're fine-tuning your skills
- Knit fabric with a bit of stretch helps you move freely
- Ribbed cuffs help hold the sleeves in place while you move
- Slim, streamlined fit
- Drawcord at hood
- Zippered front pockets
- Full-zip design
- Heat-transfer Swoosh design



 Sustainable materials



New

Women's Strike 23 Knit Short

Lifecycle

January 2023 - December 2023

Futures only

Available in

XS - S - M - L - XL - 2XL




DR2322-010
Black /
Anthracite /
(White)

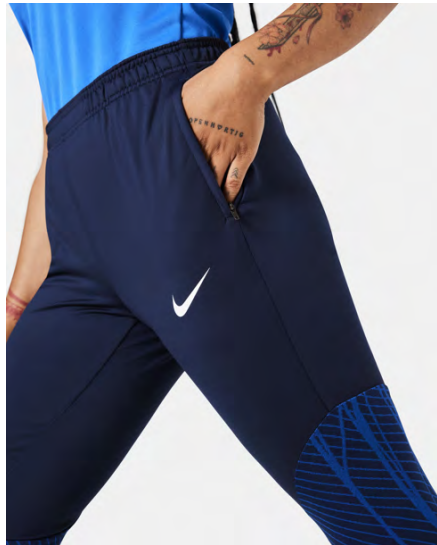
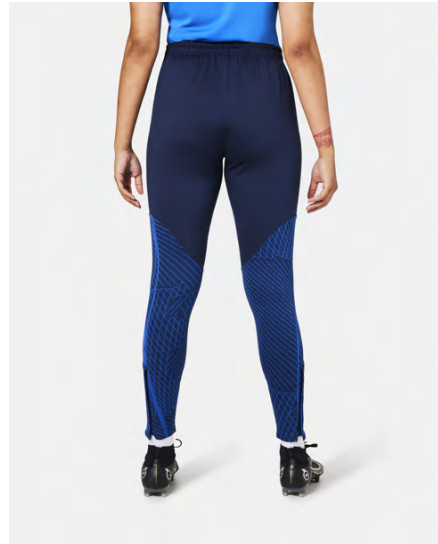
DR2322-451
Obsidian / Royal
Blue / (White)

Product Features

- 100% Polyester
- Nike Dri-FIT technology moves sweat away from your skin for quicker evaporation, helping you stay dry and comfortable
- Sweat-wicking fabric helps keep you cool and composed while you're fine-tuning your skills
- Mesh side panels let air flow to help keep you cool
- Slim, streamlined fit
- Elastic waistband with drawcord
- Heat-transfer Swoosh design
- Machine wash



 Sustainable materials



New
Women's Strike 23 Knit Pant

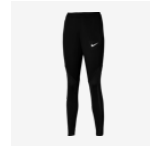
Lifecycle

January 2023 - December 2023

Futures only

Available in

XS - S - M - L - XL - 2XL




DR2568-010
 Black / Black /
 Anthracite /
 (White)



DR2568-451
 Obsidian /
 Obsidian / Royal
 Blue / (White)

Product Features

- Body: 91% Polyester/9% Spandex Panels: 94% Polyester/6% Spandex Mesh: 100% Polyester
- Nike Dri-FIT technology moves sweat away from your skin for quicker evaporation, helping you stay dry and comfortable
- Sweat-wicking fabric helps keep you cool and composed while you're fine-tuning your skills
- Stretch-knit fabric lets you move freely on or off the field
- Zippers on the lower legs make it easy to change over cleats or shoes
- Elastic waistband with drawcord
- Front pockets
- Heat-transfer Swoosh design
- Slim, streamlined fit
- Machine wash

 Sustainable materials



New
Academy 23 Top

Lifecycle

January 2023 - December 2024

Available in

XS - S - M - L - XL - 2XL - 3XL



DR1336-010
Black / White /
(White)



DR1336-012
Wolf Grey /
Black / (White)



DR1336-100
White / Black /
(Black)



DR1336-329
Green Spark /
Lucky Green /
(White)



DR1336-451
Obsidian / Royal
Blue / (White)



DR1336-452
Obsidian / Volt /
(White)



DR1336-463
Royal Blue /
Obsidian /
(White)



DR1336-657
University Red /
Gym Red /
(White)



DR1336-719
Tour Yellow /
University Gold /
(Black)

Product Features

- 100% Polyester
- Nike Dri-FIT technology moves sweat away from your skin for quicker evaporation, helping you stay dry and comfortable
- Sweat-wicking technology helps keep you cool during your pre-match or training routine
- Mesh on the back and sides lets air flow to help keep you cool
- Embroidered Swoosh design
- Machine wash



 Sustainable materials



New
Academy 23 Top (Youth)

Lifecycle

January 2023 - December 2024

Available in

XS - S - M - L - XL



DR1343-010
Black / White /
(White)



DR1343-012
Wolf Grey /
Black / (White)



DR1343-100
White / Black /
(Black)



DR1343-329
Green Spark /
Lucky Green /
(White)



DR1343-451
Obsidian / Royal
Blue / (White)



DR1343-452
Obsidian / Volt /
(White)



DR1343-463
Royal Blue /
Obsidian /
(White)



DR1343-657
University Red /
Gym Red /
(White)




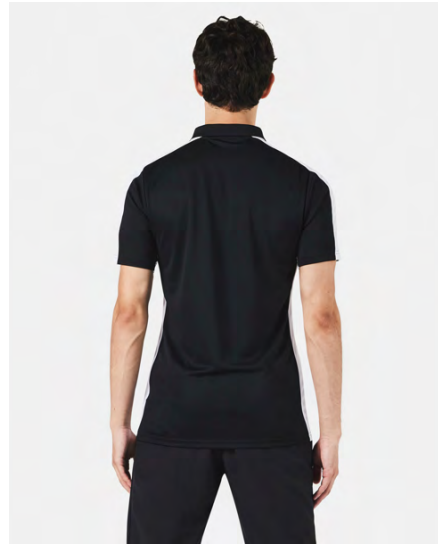
DR1343-719
Tour Yellow /
University Gold /
(Black)

Product Features

- 100% Polyester
- Nike Dri-FIT technology moves sweat away from your skin for quicker evaporation, helping you stay dry and comfortable
- Sweat-wicking technology helps keep you cool during your pre-match or training routine
- Mesh on the back and sides lets air flow to help keep you cool
- Embroidered Swoosh design
- Machine wash



 Sustainable materials



New
Academy 23 Polo

Lifecycle

January 2023 - December 2024

Available in

XS - S - M - L - XL - 2XL - 3XL



DR1346-010
Black / White /
(White)



DR1346-012
Wolf Grey /
Black / (White)



DR1346-100
White / Black /
(Black)



DR1346-329
Green Spark /
Lucky Green /
(White)



DR1346-451
Obsidian / Royal
Blue / (White)



DR1346-452
Obsidian / Volt /
(White)



DR1346-463
Royal Blue /
Obsidian /
(White)



DR1346-657
University Red /
Gym Red /
(White)




DR1346-719
Tour Yellow /
University Gold /
(Black)

Product Features

- 100% Polyester
- Nike Dri-FIT technology moves sweat away from your skin for quicker evaporation, helping you stay dry and comfortable
- Sweat-wicking fabric to help keep you cool during your pre-match or training routine
- Mesh on the sleeve and side lets air flow to help keep you cool
- Fold-over collar with button placket
- Embroidered Swoosh design
- Machine wash



 Sustainable materials



New
Academy 23 Polo (Youth)

Lifecycle

January 2023 - December 2024

Available in

XS - S - M - L - XL



DR1350-010
Black / White /
(White)



DR1350-012
Wolf Grey /
Black / (White)



DR1350-100
White / Black /
(Black)



DR1350-329
Green Spark /
Lucky Green /
(White)



DR1350-451
Obsidian / Royal
Blue / (White)



DR1350-452
Obsidian / Volt /
(White)



DR1350-463
Royal Blue /
Obsidian /
(White)



DR1350-657
University Red /
Gym Red /
(White)



DR1350-719
Tour Yellow /
University Gold /
(Black)

Product Features

- 100% Polyester
- Nike Dri-FIT technology moves sweat away from your skin for quicker evaporation, helping you stay dry and comfortable
- Sweat-wicking fabric to help keep you cool during your pre-match or training routine
- Mesh on the sleeve and side lets air flow to help keep you cool
- Fold-over collar with button placket
- Embroidered Swoosh design
- Machine wash



 Sustainable materials

New

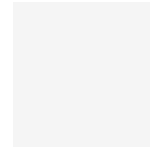
Academy 23 Sleeveless Top

Lifecycle

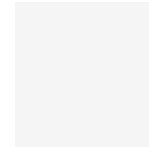
April 2023 - July 2023

Available in

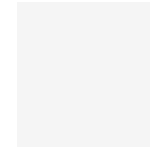
XS - S - M - L - XL - 2XL - 3XL



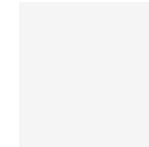
DR1331-010
Black / White /
(White)



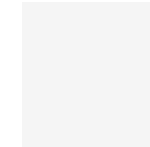
DR1331-012
Wolf Grey /
Black / (White)



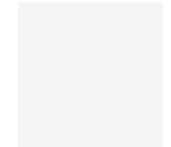
DR1331-100
White / Black /
(Black)



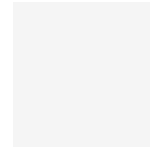
DR1331-329
Green Spark /
Lucky Green /
(White)



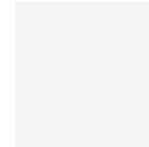
DR1331-451
Obsidian / Royal
Blue / (White)



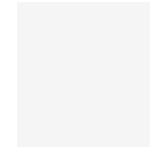
DR1331-452
Obsidian / Volt /
(White)



DR1331-463
Royal Blue /
Obsidian /
(White)



DR1331-657
University Red /
Gym Red /
(White)




DR1331-719
Tour Yellow /
University Gold /
(Black)

Product Features

- 100% Polyester
- Nike Dri-FIT technology moves sweat away from your skin for quicker evaporation, helping you stay dry and comfortable
- Sweat-wicking fabric to help keep you cool during your pre-match or training routine
- Mesh on the back and sides lets air flow to help keep you cool
- Embroidered Swoosh design
- Machine wash



 Sustainable materials

New

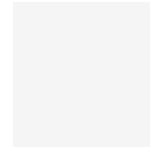
Academy 23 Sleeveless Top (Youth)

Lifecycle

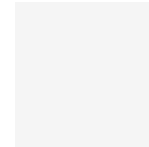
April 2023 - July 2023

Available in

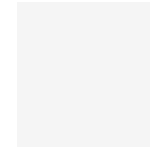
XS - S - M - L - XL



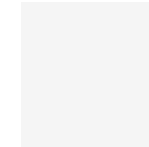
DR1335-010
Black / White /
(White)



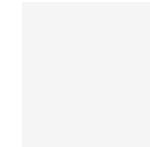
DR1335-012
Wolf Grey /
Black / (White)



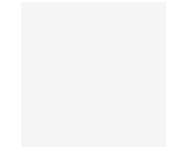
DR1335-100
White / Black /
(Black)



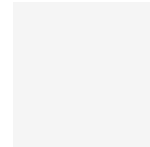
DR1335-329
Green Spark /
Lucky Green /
(White)



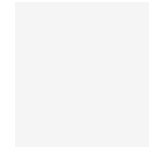
DR1335-451
Obsidian / Royal
Blue / (White)



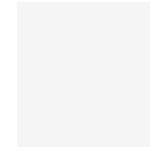
DR1335-452
Obsidian / Volt /
(White)



DR1335-463
Royal Blue /
Obsidian /
(White)



DR1335-657
University Red /
Gym Red /
(White)



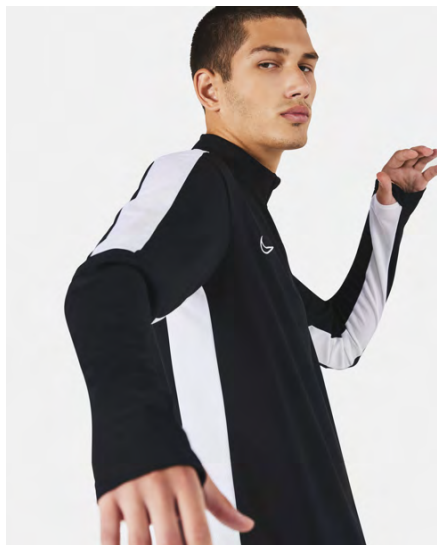
DR1335-719
Tour Yellow /
University Gold /
(Black)

Product Features

- 100% Polyester
- Nike Dri-FIT technology moves sweat away from your skin for quicker evaporation, helping you stay dry and comfortable
- Sweat-wicking fabric to help keep you cool during your pre-match or training routine
- Mesh on the back and sides lets air flow to help keep you cool
- Embroidered Swoosh design
- Machine wash



 Sustainable materials



New
Academy 23 Drill Top

Lifecycle

January 2023 - December 2024

Available in

XS - S - M - L - XL - 2XL - 3XL



DR1352-010
Black / White /
(White)



DR1352-012
Wolf Grey /
Black / (White)



DR1352-100
White / Black /
(Black)



DR1352-329
Green Spark /
Lucky Green /
(White)



DR1352-451
Obsidian / Royal
Blue / (White)



DR1352-452
Obsidian / Volt /
(White)



DR1352-463
Royal Blue /
Obsidian /
(White)



DR1352-657
University Red /
Gym Red /
(White)

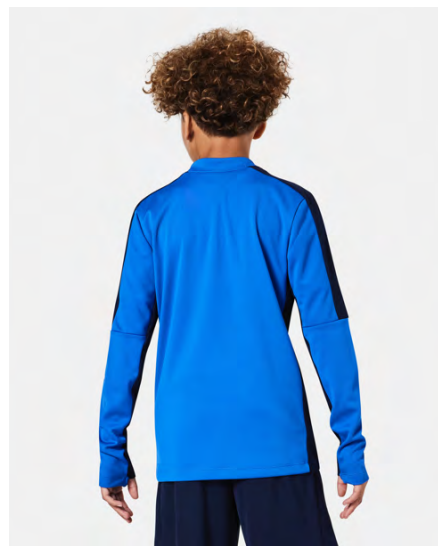


DR1352-719
Tour Yellow /
University Gold /
(Black)

Product Features

- 100% Polyester
- Nike Dri-FIT technology moves sweat away from your skin for quicker evaporation, helping you stay dry and comfortable
- Sweat-wicking fabric combined with mesh insets to help keep you dry and comfortable during your pre-match or training routine
- Mesh at sleeves and sides lets air flow to help keep you cool
- Thumb straps at the cuffs help hold the sleeves in place while you move
- 1/4-zip design with mock neck
- Embroidered Swoosh design

 Sustainable materials



New
Academy 23 Drill Top (Youth)

Lifecycle

January 2023 - December 2024

Available in

XS - S - M - L - XL



DR1356-010
Black / White /
(White)



DR1356-012
Wolf Grey /
Black / (White)



DR1356-100
White / Black /
(Black)



DR1356-329
Green Spark /
Lucky Green /
(White)



DR1356-451
Obsidian / Royal
Blue / (White)



DR1356-452
Obsidian / Volt /
(White)



DR1356-463
Royal Blue /
Obsidian /
(White)



DR1356-657
University Red /
Gym Red /
(White)



DR1356-719
Tour Yellow /
University Gold /
(Black)

Product Features

- 100% Polyester
- Nike Dri-FIT technology moves sweat away from your skin for quicker evaporation, helping you stay dry and comfortable
- Sweat-wicking fabric combined with mesh insets to help keep you dry and comfortable during your pre-match or training routine
- Mesh at sleeves and sides lets air flow to help keep you cool
- Thumb straps at the cuffs help hold the sleeves in place while you move
- 1/4-zip design with mock neck
- Embroidered Swoosh design



 Sustainable materials



New

Academy 23 Knit Track Jacket

Lifecycle

January 2023 - December 2024

Available in

XS - S - M - L - XL - 2XL - 3XL



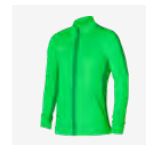
DR1681-010
Black / White /
(White)



DR1681-012
Wolf Grey /
Black / (White)



DR1681-100
White / Black /
(Black)



DR1681-329
Green Spark /
Lucky Green /
(White)



DR1681-451
Obsidian / Royal
Blue / (White)



DR1681-452
Obsidian / Volt /
(White)



DR1681-463
Royal Blue /
Obsidian /
(White)




DR1681-657
University Red /
Gym Red /
(White)



DR1681-719
Tour Yellow /
University Gold /
(Black)

Product Features

- Body/panels/pocket bags: 100% Polyester Rib: 97% Polyester/3% Spandex
- Nike Dri-FIT technology moves sweat away from your skin for quicker evaporation, helping you stay dry and comfortable
- Sweat-wicking fabric combined with mesh insets to help keep you dry and comfortable during your pre-match or training routine
- Mesh at the shoulders, sleeves and sides adds breathability
- Ribbed cuffs and hem help hold the jacket in place while you move
- Zippered front pockets
- Full-zip design
- Embroidered Swoosh logo
- Machine wash

 Sustainable materials



New

Academy 23 Knit Track Jacket (Youth)

Lifecycle

January 2023 - December 2024

Available in

XS - S - M - L - XL



DR1695-010
Black / White /
(White)



DR1695-012
Wolf Grey /
Black / (White)



DR1695-100
White / Black /
(Black)



DR1695-329
Green Spark /
Lucky Green /
(White)



DR1695-451
Obsidian / Royal
Blue / (White)



DR1695-452
Obsidian / Volt /
(White)



DR1695-463
Royal Blue /
Obsidian /
(White)



DR1695-657
University Red /
Gym Red /
(White)



DR1695-719
Tour Yellow /
University Gold /
(Black)

Product Features

- Body/panels/pocket bags: 100% Polyester Rib: 97% Polyester/3% Spandex
- Nike Dri-FIT technology moves sweat away from your skin for quicker evaporation, helping you stay dry and comfortable
- Sweat-wicking fabric combined with mesh insets to help keep you dry and comfortable during your pre-match or training routine
- Mesh at the shoulders, sleeves and sides adds breathability
- Ribbed cuffs and hem help hold the jacket in place while you move
- Zippered front pockets
- Full-zip design
- Embroidered Swoosh logo
- Machine wash

 Sustainable materials



New

Academy 23 Woven Track Jacket

Lifecycle

January 2023 - December 2024

Available in

XS - S - M - L - XL - 2XL - 3XL



DR1710-010
Black / White /
(White)



DR1710-012
Wolf Grey /
Black / (White)



DR1710-100
White / Black /
(Black)



DR1710-329
Green Spark /
Lucky Green /
(White)



DR1710-451
Obsidian / Royal
Blue / (White)



DR1710-452
Obsidian / Volt /
(White)



DR1710-463
Royal Blue /
Obsidian /
(White)



DR1710-657
University Red /
Gym Red /
(White)




DR1710-719
Tour Yellow /
University Gold /
(Black)

Product Features

- Body/panels/pocket bags: 100% Polyester Rib: 97% Polyester/3% Spandex
- Nike Dri-FIT technology moves sweat away from your skin for quicker evaporation, helping you stay dry and comfortable
- Sweat-wicking fabric combined with mesh insets to help keep you dry and comfortable during your pre-match or training routine
- Mesh lining and exterior panels at sleeves and sides add breathability
- Elastic cuffs help hold the sleeves in place while you move
- Front pockets
- Full-zip design
- Embroidered Swoosh logo
- Machine wash



 Sustainable materials



New

Academy 23 Woven Track Jacket (Youth)

Lifecycle

January 2023 - December 2024

Available in

XS - S - M - L - XL



DR1719-010
Black / White /
(White)



DR1719-012
Wolf Grey /
Black / (White)



DR1719-100
White / Black /
(Black)



DR1719-329
Green Spark /
Lucky Green /
(White)



DR1719-451
Obsidian / Royal
Blue / (White)



DR1719-463
Royal Blue /
Obsidian /
(White)




DR1719-657
University Red /
Gym Red /
(White)



DR1719-719
Tour Yellow /
University Gold /
(Black)

Product Features

- Body/panels/pocket bags: 100% Polyester Rib: 97% Polyester/3% Spandex
- Nike Dri-FIT technology moves sweat away from your skin for quicker evaporation, helping you stay dry and comfortable
- Sweat-wicking fabric combined with mesh insets to help keep you dry and comfortable during your pre-match or training routine
- Mesh lining and exterior panels at sleeves and sides add breathability
- Elastic cuffs help hold the sleeves in place while you move
- Front pockets
- Full-zip design
- Embroidered Swoosh logo
- Machine wash

 Sustainable materials



New
Academy 23 Knit Short

Lifecycle

January 2023 - December 2024

Available in

XS - S - M - L - XL - 2XL - 3XL



DR1360-010
Black / Black /
(White)



DR1360-451
Obsidian /
Obsidian /
(White)

Product Features

- 100% Polyester
- Nike Dri-FIT technology moves sweat away from your skin for quicker evaporation, helping you stay dry and comfortable
- Sweat-wicking fabric combined with mesh side stripes to help keep you dry and cool during your pre-match or training routine
- Mesh on the sides lets air flow to help keep you cool
- Elastic waistband with drawcord
- Embroidered Swoosh design
- Machine wash



 Sustainable materials



New

Academy 23 Knit Short (Youth)

Lifecycle

January 2023 - December 2024

Available in

XS - S - M - L - XL



DR1364-010
Black / Black /
(White)



DR1364-451
Obsidian /
Obsidian /
(White)

Product Features

- 100% Polyester
- Nike Dri-FIT technology moves sweat away from your skin for quicker evaporation, helping you stay dry and comfortable
- Sweat-wicking fabric combined with mesh side stripes to help keep you dry and cool during your pre-match or training routine
- Mesh on the sides lets air flow to help keep you cool
- Elastic waistband with drawcord
- Embroidered Swoosh design
- Machine wash

 Sustainable materials



New

Academy 23 Knit Pant

Lifecycle

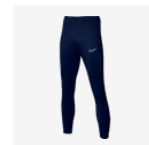
January 2023 - December 2024

Available in

XS - S - M - L - XL - 2XL - 3XL



DR1666-010
Black / Black /
(White)



DR1666-451
Obsidian /
Obsidian /
(White)

Product Features

- 100% Polyester
- Nike Dri-FIT technology moves sweat away from your skin for quicker evaporation, helping you stay dry and comfortable
- Sweat-wicking fabric combined with mesh side stripes to help keep you dry and cool during your pre-match or training routine
- Mesh side panels let air flow to help keep you cool
- Zippers on the lower legs make it easy to change over cleats or shoes
- Elastic waistband with drawcord
- Zippered side pockets
- Embroidered Swoosh design
- Machine wash



 Sustainable materials



New

Academy 23 Knit Pant (Youth)

Lifecycle

January 2023 - December 2024

Available in

XS - S - M - L - XL




DR1676-010
Black / Black /
(White)



DR1676-451
Obsidian /
Obsidian /
(White)

Product Features

- 100% Polyester
- Nike Dri-FIT technology moves sweat away from your skin for quicker evaporation, helping you stay dry and comfortable
- Sweat-wicking fabric combined with mesh side stripes to help keep you dry and cool during your pre-match or training routine
- Mesh side panels let air flow to help keep you cool
- Zippers on the lower legs make it easy to change over cleats or shoes
- Elastic waistband with drawcord
- Zippered side pockets
- Embroidered Swoosh design
- Machine wash

 Sustainable materials



New

Academy 23 Woven Track Pant

Lifecycle

January 2023 - December 2024

Available in

XS - S - M - L - XL - 2XL - 3XL




DR1725-010
Black / Black /
(White)



DR1725-451
Obsidian /
Obsidian /
(White)

Product Features

- 100% Polyester
- Nike Dri-FIT technology moves sweat away from your skin for quicker evaporation, helping you stay dry and comfortable
- Sweat-wicking fabric to help keep you dry and comfortable during your pre-match or training routine
- Mesh lining and side panels add breathability
- Elastic waistband with drawcord
- Zippered front pockets
- Elastic cuffs
- Embroidered Swoosh design
- Machine wash

 Sustainable materials



New

Academy 23 Woven Track Pant (Youth)

Lifecycle

January 2023 - December 2024

Available in

XS - S - M - L - XL



DR1734-010
Black / Black /
(White)



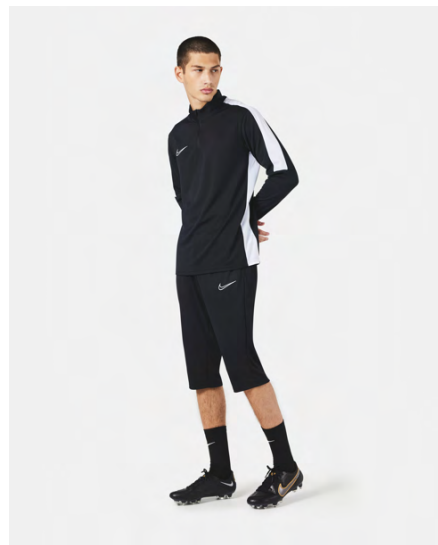
DR1734-451
Obsidian /
Obsidian /
(White)

Product Features

- 100% Polyester
- Nike Dri-FIT technology moves sweat away from your skin for quicker evaporation, helping you stay dry and comfortable
- Sweat-wicking fabric to help keep you dry and comfortable during your pre-match or training routine
- Mesh lining and side panels add breathability
- Elastic waistband with drawcord
- Zippered front pockets
- Elastic cuffs
- Embroidered Swoosh design
- Machine wash



 Sustainable materials



New

Academy 23 3/4 Knit Pant

Lifecycle

January 2023 - December 2024

Available in

XS - S - M - L - XL - 2XL - 3XL



DR1365-010
Black / Black /
(White)




DR1365-451
Obsidian /
Obsidian /
(White)

Product Features

- 100% Polyester
- Nike Dri-FIT technology moves sweat away from your skin for quicker evaporation, helping you stay dry and comfortable
- Sweat-wicking fabric to help keep you cool during your pre-match or training routine
- Mesh side panels let air flow to help keep you cool
- Elastic waistband with drawcord
- Zippered side pockets
- Embroidered Swoosh design
- Machine wash



 Sustainable materials



New

Academy 23 3/4 Knit Pant (Youth)

Lifecycle

January 2023 - December 2024

Available in

XS - S - M - L - XL



DR1369-010
Black / Black /
(White)



DR1369-451
Obsidian /
Obsidian /
(White)

Product Features

- 100% Polyester
- Nike Dri-FIT technology moves sweat away from your skin for quicker evaporation, helping you stay dry and comfortable
- Sweat-wicking fabric to help keep you cool during your pre-match or training routine
- Mesh side panels let air flow to help keep you cool
- Elastic waistband with drawcord
- Zippered side pockets
- Embroidered Swoosh design
- Machine wash



 Sustainable materials



New
Women's Academy 23 Top

Lifecycle

January 2023 - December 2024

Available in

XS - S - M - L - XL - 2XL



DR1338-010
 Black / White /
 (White)



DR1338-012
 Wolf Grey /
 Black / (White)



DR1338-100
 White / Black /
 (Black)



DR1338-329
 Green Spark /
 Lucky Green /
 (White)



DR1338-451
 Obsidian / Royal
 Blue / (White)



DR1338-452
 Obsidian / Volt /
 (White)



DR1338-463
 Royal Blue /
 Obsidian /
 (White)



DR1338-657
 University Red /
 Gym Red /
 (White)




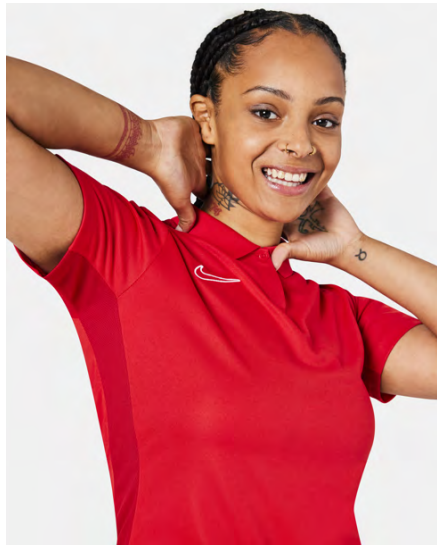
DR1338-719
 Tour Yellow /
 University Gold /
 (Black)

Product Features

- 100% Polyester
- Nike Dri-FIT technology moves sweat away from your skin for quicker evaporation, helping you stay dry and comfortable
- Sweat-wicking technology helps keep you cool during your pre-match or training routine
- Mesh on the back and sides lets air flow to help keep you cool
- Embroidered Swoosh design
- Machine wash



 Sustainable materials



New

Women's Academy 23 Polo

Lifecycle

January 2023 - December 2024

Available in

XS - S - M - L - XL - 2XL



DR1348-010
Black / White /
(White)



DR1348-012
Wolf Grey /
Black / (White)



DR1348-100
White / Black /
(Black)



DR1348-329
Green Spark /
Lucky Green /
(White)



DR1348-451
Obsidian / Royal
Blue / (White)



DR1348-452
Obsidian / Volt /
(White)



DR1348-463
Royal Blue /
Obsidian /
(White)



DR1348-657
University Red /
Gym Red /
(White)




DR1348-719
Tour Yellow /
University Gold /
(Black)

Product Features

- 100% Polyester
- Nike Dri-FIT technology moves sweat away from your skin for quicker evaporation, helping you stay dry and comfortable
- Sweat-wicking fabric to help keep you cool during your pre-match or training routine
- Mesh on the sleeve and side lets air flow to help keep you cool
- Fold-over collar with button placket
- Embroidered Swoosh design
- Machine wash



 Sustainable materials



New
Women's Academy 23
Sleeveless Top

Lifecycle

April 2023 - July 2023

Available in

XS - S - M - L - XL - 2XL



DR1332-010
 Black / White /
 (White)



DR1332-012
 Wolf Grey /
 Black / (White)



DR1332-100
 White / Black /
 (Black)



DR1332-329
 Green Spark /
 Lucky Green /
 (White)



DR1332-451
 Obsidian / Royal
 Blue / (White)



DR1332-452
 Obsidian / Volt /
 (White)



DR1332-463
 Royal Blue /
 Obsidian /
 (White)



DR1332-657
 University Red /
 Gym Red /
 (White)




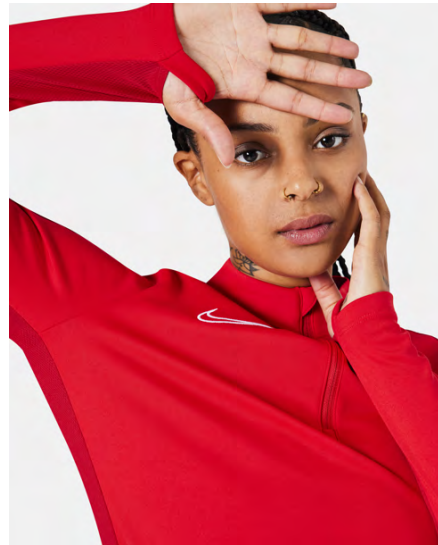
DR1332-719
 Tour Yellow /
 University Gold /
 (Black)

Product Features

- 100% Polyester
- Nike Dri-FIT technology moves sweat away from your skin for quicker evaporation, helping you stay dry and comfortable
- Sweat-wicking fabric to help keep you cool during your pre-match or training routine
- Mesh on the back and sides lets air flow to help keep you cool
- Embroidered Swoosh design
- Machine wash



 Sustainable materials



New

Women's Academy 23 Drill Top

Lifecycle

January 2023 - December 2024

Available in

XS - S - M - L - XL - 2XL



DR1354-010
Black / White /
(White)



DR1354-012
Wolf Grey /
Black / (White)



DR1354-100
White / Black /
(Black)



DR1354-329
Green Spark /
Lucky Green /
(White)



DR1354-451
Obsidian / Royal
Blue / (White)



DR1354-452
Obsidian / Volt /
(White)



DR1354-463
Royal Blue /
Obsidian /
(White)




DR1354-657
University Red /
Gym Red /
(White)



DR1354-719
Tour Yellow /
University Gold /
(Black)

Product Features

- 100% Polyester
- Nike Dri-FIT technology moves sweat away from your skin for quicker evaporation, helping you stay dry and comfortable
- Sweat-wicking fabric combined with mesh insets to help keep you dry and comfortable during your pre-match or training routine
- Mesh at sleeves and sides lets air flow to help keep you cool
- Thumb straps at the cuffs help hold the sleeves in place while you move
- 1/4-zip design with mock neck
- Embroidered Swoosh design
- Machine wash

 Sustainable materials



New

Women's Academy 23 Knit Track Jacket

Lifecycle

January 2023 - December 2024

Available in

XS - S - M - L - XL - 2XL



DR1686-010
Black / White /
(White)



DR1686-012
Wolf Grey /
Black / (White)



DR1686-100
White / Black /
(Black)



DR1686-329
Green Spark /
Lucky Green /
(White)



DR1686-451
Obsidian / Royal
Blue / (White)



DR1686-463
Royal Blue /
Obsidian /
(White)



DR1686-657
University Red /
Gym Red /
(White)

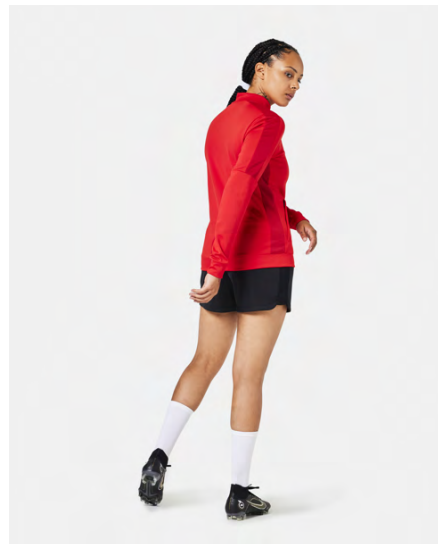


DR1686-719
Tour Yellow /
University Gold /
(Black)

Product Features

- Body/panels/pocket bags: 100% Polyester Rib: 97% Polyester/3% Spandex
- Nike Dri-FIT technology moves sweat away from your skin for quicker evaporation, helping you stay dry and comfortable
- Sweat-wicking fabric combined with mesh insets to help keep you dry and comfortable during your pre-match or training routine
- Mesh at the shoulders, sleeves and sides adds breathability
- Ribbed cuffs and hem help hold the jacket in place while you move
- Zippered front pockets
- Full-zip design
- Embroidered Swoosh logo
- Machine wash

 Sustainable materials



New

Women's Academy 23 Knit Short

Lifecycle

January 2023 - December 2024

Available in

XS - S - M - L - XL - 2XL




DR1362-010
Black / Black /
(White)

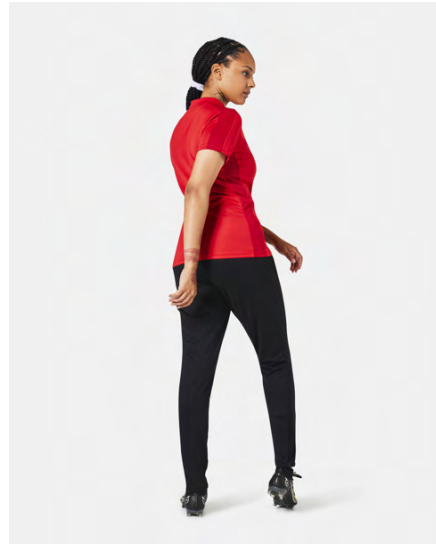


DR1362-451
Obsidian /
Obsidian /
(White)

Product Features

- 100% Polyester
- Nike Dri-FIT technology moves sweat away from your skin for quicker evaporation, helping you stay dry and comfortable
- Sweat-wicking fabric combined with mesh side stripes to help keep you dry and cool during your pre-match or training routine
- Mesh on the sides lets air flow to help keep you cool
- Elastic waistband with drawcord
- Embroidered Swoosh design
- Machine wash

 Sustainable materials



New

Women's Academy 23 Knit Pant

Lifecycle

January 2023 - December 2024

Available in

XS - S - M - L - XL - 2XL




DR1671-010
Black / Black /
(White)

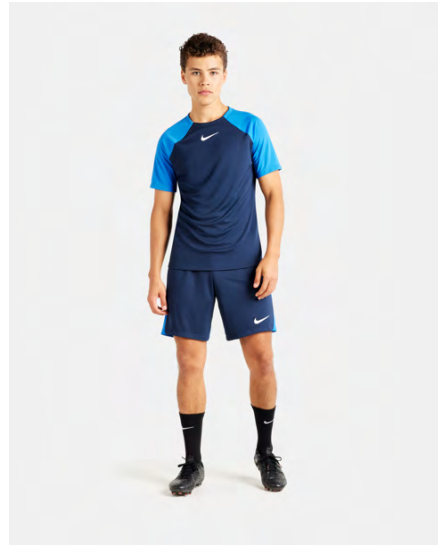
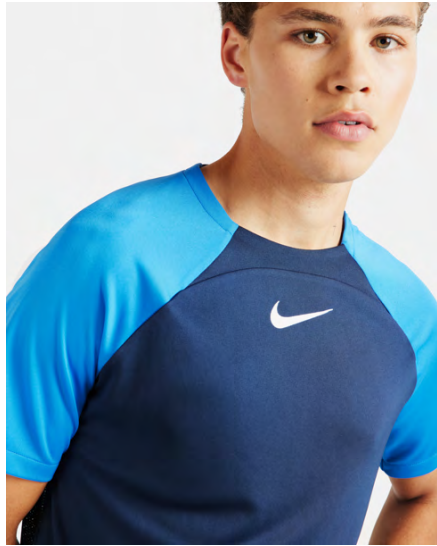


DR1671-451
Obsidian /
Obsidian /
(White)

Product Features

- 100% Polyester
- Nike Dri-FIT technology moves sweat away from your skin for quicker evaporation, helping you stay dry and comfortable
- Sweat-wicking fabric combined with mesh side stripes to help keep you dry and cool during your pre-match or training routine
- Mesh side panels let air flow to help keep you cool
- Zippers on the lower legs make it easy to change over cleats or shoes
- Zippered side pockets
- Elastic waistband with drawcord
- Embroidered Swoosh design

 Sustainable materials



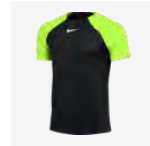
Carryover
Academy Pro Top S/S

Lifecycle

January 2020 - December 2025

Available in

S - M - L - XL - 2XL



DH9225-010
 Black / Volt /
 (White)



DH9225-011
 Black /
 Anthracite /
 (White)



DH9225-329
 Green Spark /
 Lucky Green /
 (White)



DH9225-451
 Obsidian / Royal
 Blue / (White)



DH9225-463
 Royal Blue /
 Obsidian /
 (White)



DH9225-635
 Bright Crimson /
 University Red /
 (White)



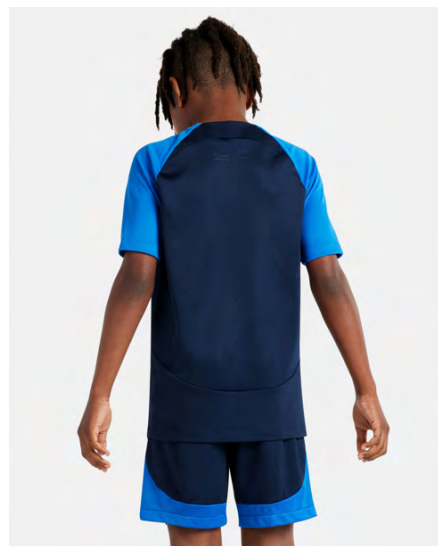
DH9225-657
 University Red /
 Bright Crimson /
 (White)

Product Features

- 100% polyester
- A relaxed, easy fit works together with moisture-wicking fabric to help keep sweat off your skin when your training heats up
- Dri-FIT technology moves sweat from your skin for quicker evaporation—helping you stay dry and comfortable
- Mesh back panel provides additional breathability
- Standard fit for a relaxed, easy feel
- Machine wash



 Sustainable materials



Carryover Academy Pro Top S/S (Youth)

Lifecycle

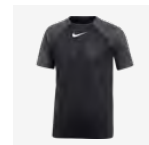
January 2022 - December 2023

Available in

XS - S - M - L - XL



DH9277-010
Black / Volt /
(White)



DH9277-011
Black /
Anthracite /
(White)



DH9277-329
Green Spark /
Lucky Green /
(White)



DH9277-451
Obsidian / Royal
Blue / (White)



DH9277-463
Royal Blue /
Obsidian /
(White)



DH9277-635
Bright Crimson /
University Red /
(White)



DH9277-657
University Red /
Bright Crimson /
(White)

Product Features

- 100% polyester
- A relaxed, easy fit works together with moisture-wicking fabric to help keep sweat off your skin when your training heats up
- Dri-FIT technology moves sweat from your skin for quicker evaporation—helping you stay dry and comfortable
- Mesh back panel provides additional breathability
- Machine wash

 Sustainable materials



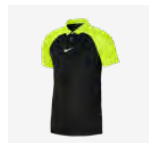
Carryover Academy Pro Polo S/S

Lifecycle

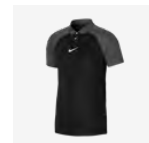
January 2022 - December 2023

Available in

S - M - L - XL - 2XL



DH9228-010
Black / Volt /
(White)



DH9228-011
Black /
Anthracite /
(White)



DH9228-329
Green Spark /
Lucky Green /
(White)



DH9228-451
Obsidian / Royal
Blue / (White)



DH9228-463
Royal Blue /
Obsidian /
(White)



DH9228-635
Bright Crimson /
University Red /
(White)



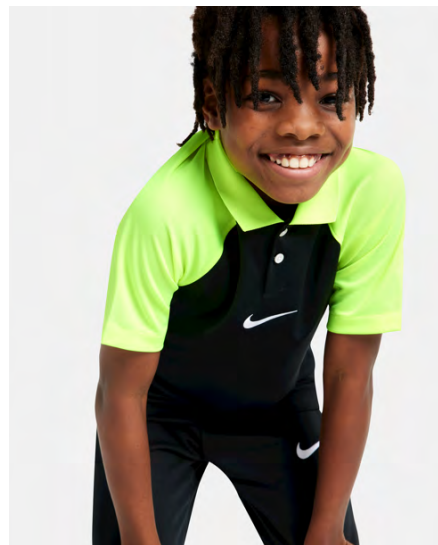
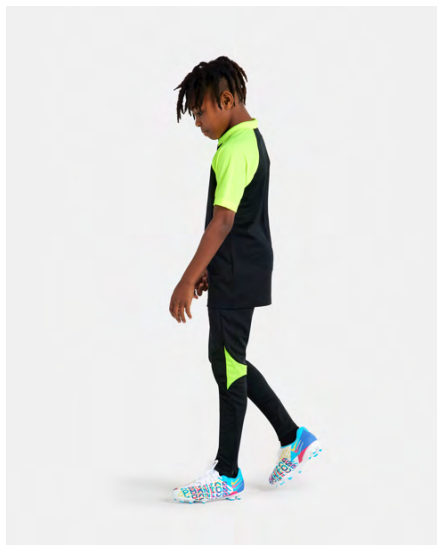
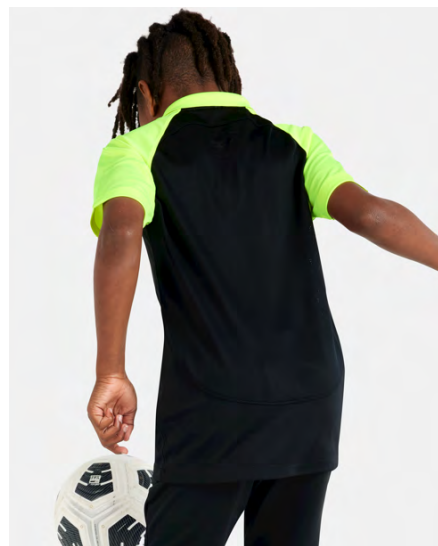
DH9228-657
University Red /
Bright Crimson /
(White)

Product Features

- 100% polyester
- A relaxed, easy fit works together with moisture-wicking fabric to help keep sweat off your skin when your training heats up
- Dri-FIT technology moves sweat from your skin for quicker evaporation—helping you stay dry and comfortable
- 2-button placket and fold-over collar provide timeless style
- Standard fit for a relaxed, easy feel
- Machine wash



 Sustainable materials



Carryover Academy Pro Polo S/S (Youth)

Lifecycle

January 2022 - December 2023

Available in

XS - S - M - L - XL



DH9279-010
Black / Volt /
(White)



DH9279-011
Black /
Anthracite /
(White)



DH9279-329
Green Spark /
Lucky Green /
(White)



DH9279-451
Obsidian / Royal
Blue / (White)



DH9279-463
Royal Blue /
Obsidian /
(White)



DH9279-635
Bright Crimson /
University Red /
(White)



DH9279-657
University Red /
Bright Crimson /
(White)

Product Features

- 100% polyester
- A relaxed, easy fit works together with moisture-wicking fabric to help keep sweat off your skin when your training heats up
- Dri-FIT technology moves sweat from your skin for quicker evaporation—helping you stay dry and comfortable
- 2-button placket and fold-over collar provide timeless style
- Standard fit for a relaxed, easy feel
- Machine wash



 Sustainable materials



Carryover Academy Pro Drill Top

Lifecycle

January 2022 - December 2023

Available in

S - M - L - XL - 2XL



DH9230-010
Black / Volt /
(White)



DH9230-011
Black /
Anthracite /
(White)



DH9230-329
Green Spark /
Lucky Green /
(White)



DH9230-451
Obsidian / Royal
Blue / (White)



DH9230-463
Royal Blue /
Obsidian /
(White)




DH9230-635
Bright Crimson /
University Red /
(White)



DH9230-657
University Red /
Bright Crimson /
(White)

Product Features

- 100% polyester
- A relaxed, easy fit works together with moisture-wicking fabric to help keep sweat off your skin when your training heats up
- Dri-FIT technology moves sweat from your skin for quicker evaporation—helping you stay dry and comfortable
- Invisible Thumb Loops help hold the sleeves in place as you move, and seamlessly disappear when not in use
- Standard fit for a relaxed, easy feel
- 1/4 zipper
- Machine wash

 Sustainable materials



Carryover Academy Pro Drill Top (Youth)

Lifecycle

January 2022 - December 2023

Available in

XS - S - M - L - XL



DH9280-010
Black / Volt /
(White)



DH9280-011
Black /
Anthracite /
(White)



DH9280-329
Green Spark /
Lucky Green /
(White)



DH9280-451
Obsidian / Royal
Blue / (White)



DH9280-463
Royal Blue /
Obsidian /
(White)



DH9280-635
Bright Crimson /
University Red /
(White)



DH9280-657
University Red /
Bright Crimson /
(White)

Product Features

- 100% polyester
- A relaxed, easy fit works together with moisture-wicking fabric to help keep sweat off your skin when your training heats up
- Dri-FIT technology moves sweat from your skin for quicker evaporation—helping you stay dry and comfortable
- Invisible Thumb Loops help hold the sleeves in place as you move—and remain hidden when not in use
- Standard fit for a relaxed, easy feel
- Machine wash

 Sustainable materials



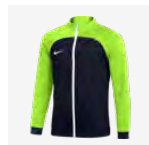
Carryover Academy Pro Track Jacket

Lifecycle

January 2022 - December 2023

Available in

S - M - L - XL - 2XL



DH9234-010
Black / Volt /
(White)



DH9234-011
Black /
Anthracite /
(White)



DH9234-329
Green Spark /
Lucky Green /
(White)



DH9234-451
Obsidian / Royal
Blue / (White)



DH9234-463
Royal Blue /
Obsidian /
(White)



DH9234-635
Bright Crimson /
University Red /
(White)




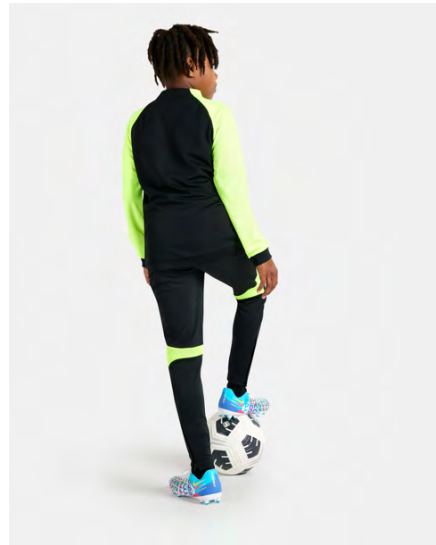
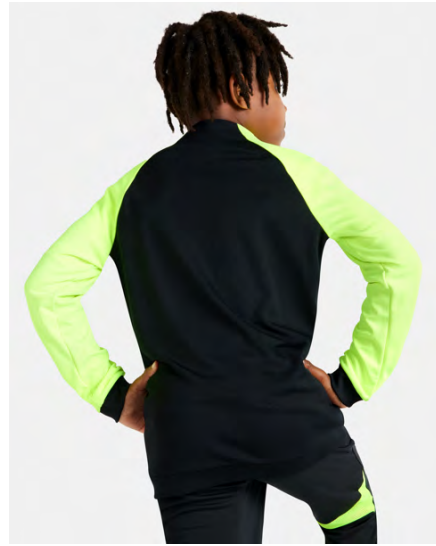
DH9234-657
University Red /
Bright Crimson /
(White)

Product Features

- 100% polyester
- A relaxed, easy fit works together with moisture-wicking fabric to help keep sweat off your skin when your training heats up
- Dri-FIT technology moves sweat from your skin for quicker evaporation—helping you stay dry and comfortable
- Zippered side pockets let you secure your essentials
- Full-zip design lets you personalize your coverage
- Standard fit for a relaxed, easy feel
- Machine wash



 Sustainable materials



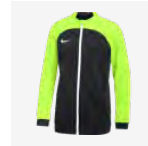
Carryover Academy Pro Track Jacket (Youth)

Lifecycle

January 2022 - December 2023

Available in

XS - S - M - L - XL



DH9283-010
Black / Volt /
(White)



DH9283-011
Black /
Anthracite /
(White)



DH9283-329
Green Spark /
Lucky Green /
(White)



DH9283-451
Obsidian / Royal
Blue / (White)



DH9283-463
Royal Blue /
Obsidian /
(White)



DH9283-635
Bright Crimson /
University Red /
(White)




DH9283-657
University Red /
Bright Crimson /
(White)

Product Features

- 100% polyester
- A relaxed, easy fit works together with moisture-wicking fabric to help keep sweat off your skin when your training heats up
- Dri-FIT technology moves sweat from your skin for quicker evaporation—helping you stay dry and comfortable
- Zippered side pockets let you secure your essentials
- Full-zip design lets you personalize your coverage
- Standard fit for a relaxed, easy feel
- Machine wash



 Sustainable materials



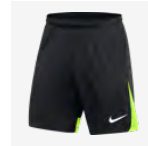
Carryover Academy Pro Short

Lifecycle

January 2022 - December 2023

Available in

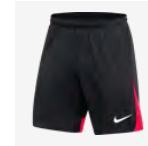
S - M - L - XL - 2XL



DH9236-010
Black / Volt /
(White)



DH9236-011
Black / Green
Spark / (White)



DH9236-013
Black / Bright
Crimson /
(White)



DH9236-014
Black /
Anthracite /
(White)



DH9236-451
Obsidian / Royal
Blue / (White)

Product Features

- 100% polyester
- A slim fit works together with moisture-wicking fabric to help keep sweat off your skin when your training heats up
- Dri-FIT technology moves sweat from your skin for quicker evaporation—helping you stay dry and comfortable
- Drawcord at the elastic waistband lets you adjust the fit
- Slim fit for a tailored feel
- Machine wash

 Sustainable materials



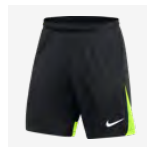
Carryover
Academy Pro Short (Youth)

Lifecycle

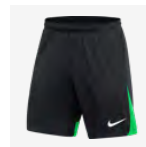
January 2022 - December 2023

Available in

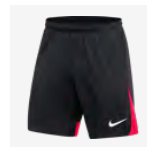
XS - S - M - L - XL



DH9287-010
 Black / Volt /
 (White)



DH9287-011
 Black / Green
 Spark / (White)



DH9287-013
 Black / Bright
 Crimson /
 (White)



DH9287-014
 Black /
 Anthracite /
 (White)




DH9287-451
 Obsidian / Royal
 Blue / (White)

Product Features

- 100% polyester
- A relaxed, easy fit works together with moisture-wicking fabric to help keep sweat off your skin when your training heats up
- Dri-FIT technology moves sweat from your skin for quicker evaporation—helping you stay dry and comfortable
- Mesh waistband offers lightweight breathability
- Standard fit for a relaxed, easy feel
- Machine wash



 Sustainable materials



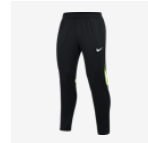
Carryover Academy Pro Pant

Lifecycle

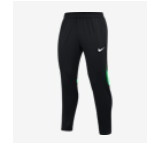
January 2022 - December 2023

Available in

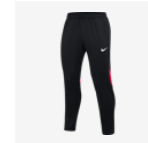
S - M - L - XL - 2XL



DH9240-010
Black / Volt /
(White)



DH9240-011
Black / Green
Spark / (White)



DH9240-013
Black / Bright
Crimson /
(White)



DH9240-014
Black /
Anthracite /
(White)



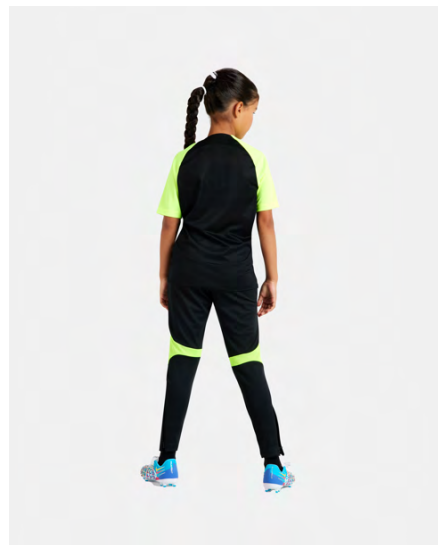
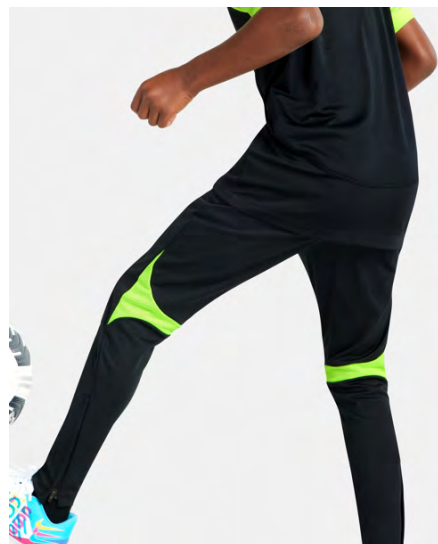
DH9240-451
Obsidian / Royal
Blue / (White)

Product Features

- 100% polyester
- A relaxed, easy fit works together with moisture-wicking fabric to help keep sweat off your skin when your training heats up
- Dri-FIT technology moves sweat from your skin for quicker evaporation—helping you stay dry and comfortable
- Zippered side pockets let you store your essentials
- Flexible fabric stretches with you as you move so you're quickest to every ball
- Zippered hems let you change easily over cleats or shoes
- Standard fit for a relaxed, easy feel
- Machine wash



 Sustainable materials



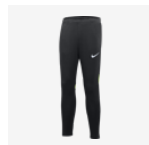
Carryover Academy Pro Pant (Youth)

Lifecycle

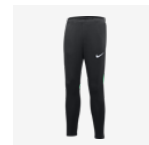
January 2022 - December 2023

Available in

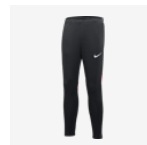
XS - S - M - L - XL



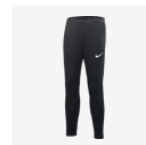
DH9325-010
Black / Volt /
(White)



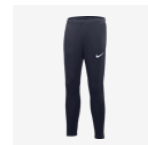
DH9325-011
Black / Green
Spark / (White)



DH9325-013
Black / Bright
Crimson /
(White)



DH9325-014
Black /
Anthracite /
(White)



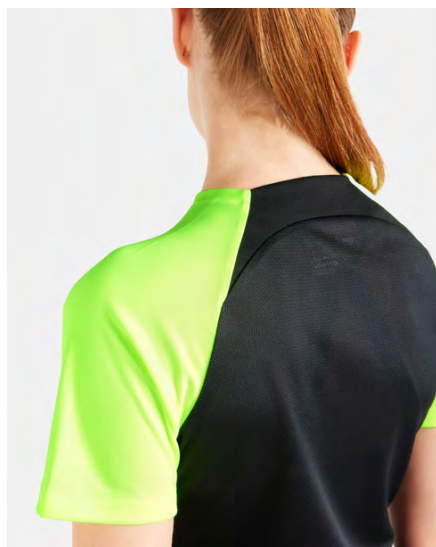
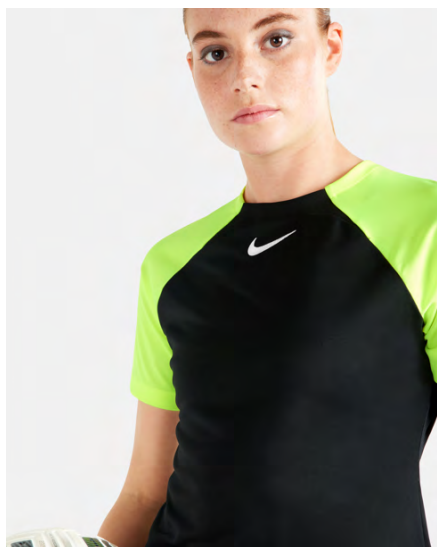
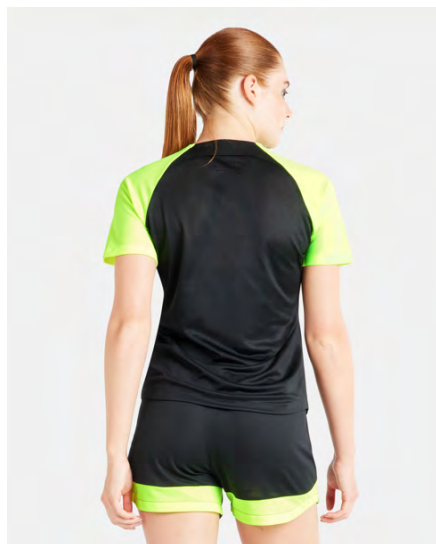
DH9325-451
Obsidian / Royal
Blue / (White)

Product Features

- 100% polyester
- A relaxed, easy fit works together with moisture-wicking fabric to help keep sweat off your skin when your training heats up
- Dri-FIT technology moves sweat from your skin for quicker evaporation—helping you stay dry and comfortable
- Zippered side pockets let you store your essentials
- Flexible fabric stretches with you as you move so you're quickest to every ball
- Zippered hems let you change easily over cleats or shoes
- Standard fit for a relaxed, easy feel
- Machine wash



 Sustainable materials



Carryover Women's Academy Pro Top S/S

Lifecycle

January 2022 - December 2023

Available in

XS - S - M - L - XL



DH9242-010
Black / Volt /
(White)



DH9242-011
Black /
Anthracite /
(White)



DH9242-329
Green Spark /
Lucky Green /
(White)



DH9242-451
Obsidian / Royal
Blue / (White)



DH9242-463
Royal Blue /
Obsidian /
(White)



DH9242-635
Bright Crimson /
University Red /
(White)

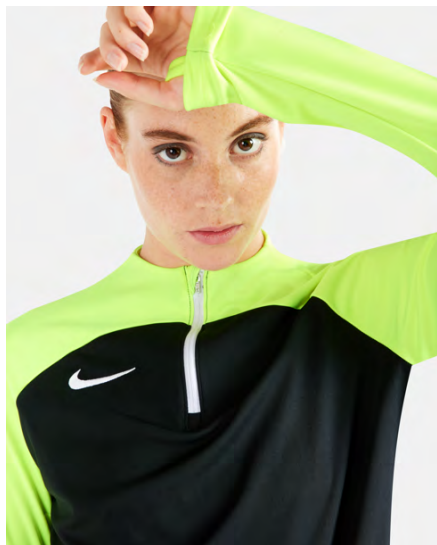


DH9242-657
University Red /
Bright Crimson /
(White)

Product Features

- 100% polyester
- A relaxed, easy fit works together with moisture-wicking fabric to help keep sweat off your skin when your training heats up
- Dri-FIT technology moves sweat from your skin for quicker evaporation—helping you stay dry and comfortable
- Mesh back panel provides additional breathability
- Standard fit for a relaxed, easy feel
- Machine wash

 Sustainable materials



Carryover Women's Academy Pro Drill Top

Lifecycle

January 2022 - December 2023

Available in

XS - S - M - L - XL



DH9246-010
Black / Volt /
(White)



DH9246-011
Black /
Anthracite /
(White)



DH9246-329
Green Spark /
Lucky Green /
(White)



DH9246-451
Obsidian / Royal
Blue / (White)



DH9246-463
Royal Blue /
Obsidian /
(White)



DH9246-635
Bright Crimson /
University Red /
(White)

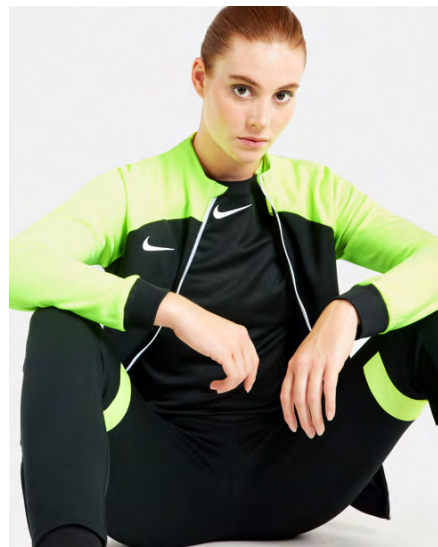
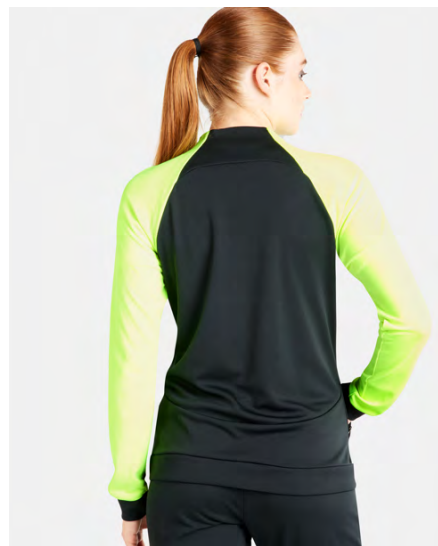


DH9246-657
University Red /
Bright Crimson /
(White)

Product Features

- 100% polyester
- A slim fit works together with moisture-wicking fabric to help keep sweat off your skin when your training heats up
- Dri-FIT technology moves sweat from your skin for quicker evaporation—helping you stay dry and comfortable
- Invisible Thumb Loops help hold the sleeves in place as you move, and seamlessly disappear when not in use
- Longer back hem helps keep you covered
- 1/4 zipper
- Slim fit for a tailored feel
- Machine wash

 Sustainable materials



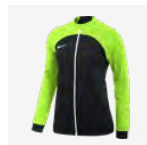
Carryover Women's Academy Pro Track Jacket

Lifecycle

January 2022 - December 2023

Available in

XS - S - M - L - XL



DH9250-010
Black / Volt /
(White)



DH9250-011
Black /
Anthracite /
(White)



DH9250-329
Green Spark /
Lucky Green /
(White)



DH9250-451
Obsidian / Royal
Blue / (White)



DH9250-463
Royal Blue /
Obsidian /
(White)



DH9250-635
Bright Crimson /
University Red /
(White)

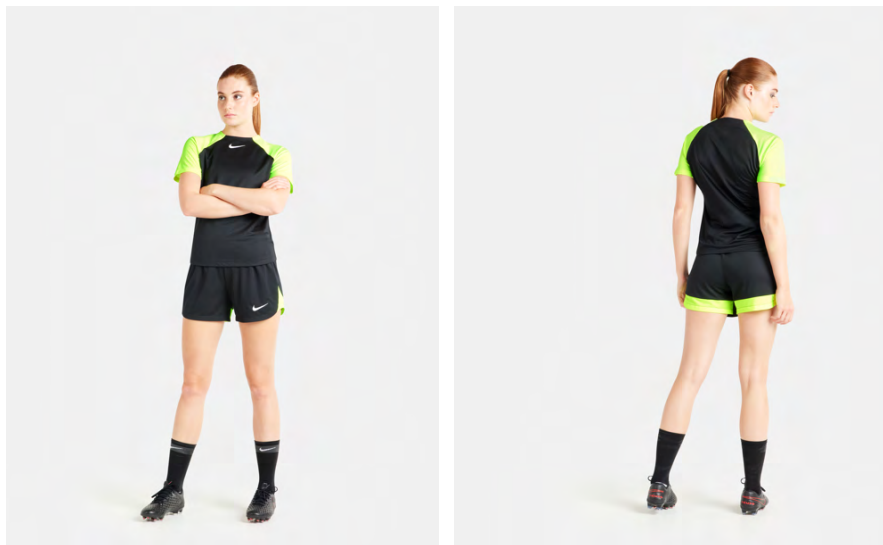


DH9250-657
University Red /
Bright Crimson /
(White)

Product Features

- 100% polyester
- A slim fit works together with moisture-wicking fabric to help keep sweat off your skin when your training heats up
- Dri-FIT technology moves sweat from your skin for quicker evaporation—helping you stay dry and comfortable
- Zippered side pockets let you store your essentials
- Ribbed cuffs and hem provide a stay-put fit
- Slim fit for a tailored feel
- Machine wash

 Sustainable materials



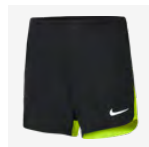
Carryover
Women's Academy Pro Short

Lifecycle

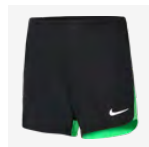
January 2022 - December 2023

Available in

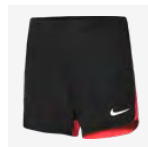
XS - S - M - L - XL



DH9252-010
 Black / Volt /
 (White)



DH9252-011
 Black / Green
 Spark / (White)



DH9252-013
 Black / Bright
 Crimson /
 (White)



DH9252-014
 Black /
 Anthracite /
 (White)



DH9252-451
 Obsidian / Royal
 Blue / (White)

Product Features

- 100% polyester
- A relaxed, easy fit works together with moisture-wicking fabric to help keep sweat off your skin when your training heats up
- Dri-FIT technology moves sweat from your skin for quicker evaporation—helping you stay dry and comfortable
- Mesh waistband is lightweight and breathable
- Standard fit for a relaxed, easy feel
- Machine wash

 Sustainable materials



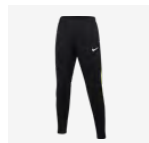
Carryover
Women's Academy Pro Pant

Lifecycle

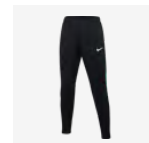
January 2022 - December 2023

Available in

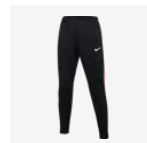
XS - S - M - L - XL



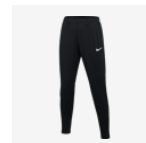
DH9273-010
 Black / Volt /
 (White)



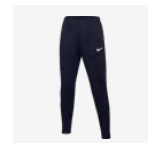
DH9273-011
 Black / Green
 Spark / (White)



DH9273-013
 Black / Bright
 Crimson /
 (White)



DH9273-014
 Black /
 Anthracite /
 (White)



DH9273-451
 Obsidian / Royal
 Blue / (White)

Product Features

- 100% polyester
- A relaxed, easy fit works together with moisture-wicking fabric to help keep sweat off your skin when your training heats up
- Dri-FIT technology moves sweat from your skin for quicker evaporation—helping you stay dry and comfortable
- Zippered pockets let you secure your essentials
- Leg zippers let you change without having to take off your cleats
- Standard fit for a relaxed, easy feel
- Machine wash



 Sustainable materials



Carryover Academy Pro Training Kit (Little Kids)

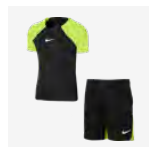
Lifecycle

January 2022 - December 2023

Futures only

Available in

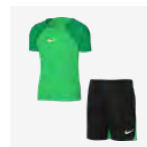
XS - S - M - L - XL



DH9484-010
Black / Volt /
(White)



DH9484-013
Black /
Anthracite /
(White)



DH9484-329
Green Spark /
Lucky Green /
(White)



DH9484-451
Obsidian / Royal
Blue / (White)



DH9484-463
Royal Blue /
Obsidian /
(White)



DH9484-635
Bright Crimson /
University Red /
(White)



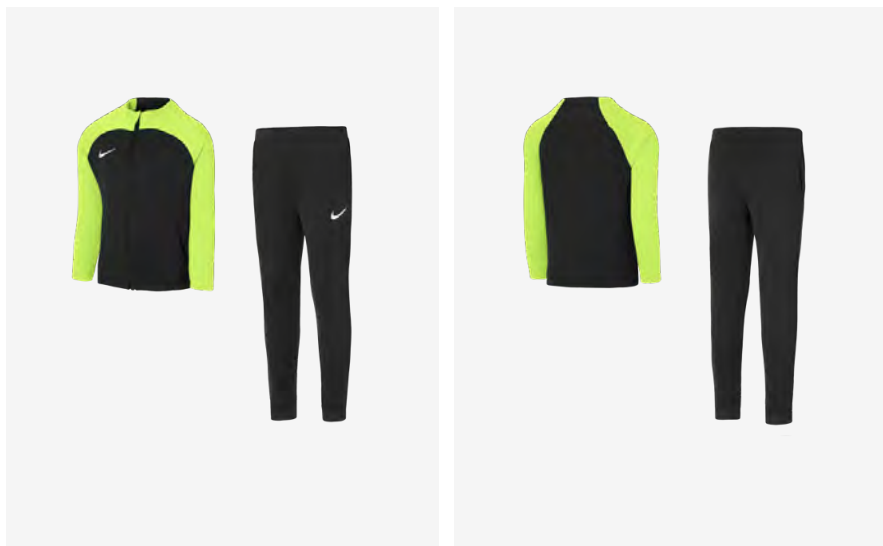
DH9484-657
University Red /
Bright Crimson /
(White)

Product Features

- This product is made with 100% recycled polyester fibers
- A relaxed, easy fit works together with moisture-wicking fabric to help keep sweat off your skin when your training heats up
- Nike Dri-FIT technology moves sweat away from your skin for quicker evaporation, helping you stay dry and comfortable
- Side pockets let you store small items
- Elastic drawcord provides a personalized fit
- Machine wash



 Sustainable materials



Carryover Academy Pro Track Suit (Little Kids)

Lifecycle

January 2022 - December 2023

Futures only

Available in

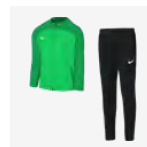
XS - S - M - L - XL



DJ3363-010
Black / Black /
Volt / (White)



DJ3363-013
Black / Black /
Anthracite /
(White)



DJ3363-329
Green Spark /
Black / Lucky
Green / (White)



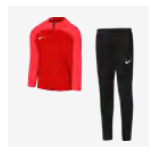
DJ3363-451
Obsidian / Royal
Blue / (White)



DJ3363-463
Royal Blue /
Obsidian /
Obsidian /
(White)



DJ3363-635
Bright Crimson /
Black /
University Red /
(White)




DJ3363-657
University Red /
Black / Bright
Crimson /
(White)

Product Features

- 100% polyester
- A relaxed, easy fit works together with moisture-wicking fabric to help keep sweat off your skin when your training heats up
- Dri-FIT technology moves sweat from your skin for quicker evaporation—helping you stay dry and comfortable
- Zippered pockets let you secure your essentials
- Standard fit for a relaxed, easy feel
- Machine wash



 Sustainable materials



Carryover Park 20 Top

Lifecycle

January 2020 - December 2025

Available in

S - M - L - XL - 2XL



BV6883-010
Black / White /
(White)



BV6883-100
White / Black /
(Black)



BV6883-302
Pine Green /
White / (White)



BV6883-410
Obsidian / White
/ (White)



BV6883-463
Royal Blue /
White / (White)



BV6883-657
University Red /
White / (White)



BV6883-719
Tour Yellow /
Black / (Black)

Product Features

- This product is made with 100% recycled polyester fibers
- Dri-FIT technology helps you stay dry, comfortable and focused
- Slim fit for a tailored feel
- Shoulder piping inspires a classic football look



 Sustainable materials



Carryover
Park 20 Top (Youth)

Lifecycle

January 2020 - December 2025

Available in

XS - S - M - L - XL



BV6905-010
 Black / White /
 (White)



BV6905-100
 White / Black /
 (Black)



BV6905-302
 Pine Green /
 White / (White)



BV6905-451
 Obsidian / White
 / (White)



BV6905-463
 Royal Blue /
 White / (White)



BV6905-657
 University Red /
 White / (White)



BV6905-719
 Tour Yellow /
 Black / (Black)

Product Features

- This product is made with 100% recycled polyester fibers
- Dri-FIT technology helps you stay dry, comfortable and focused
- Slim fit for a tailored feel
- Shoulder piping inspires a classic football look



 Sustainable materials



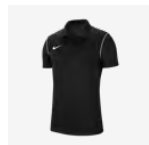
Carryover Park 20 Polo

Lifecycle

January 2020 - December 2025

Available in

S - M - L - XL - 2XL



BV6879-010
Black / White /
(White)



BV6879-100
White / Black /
(Black)



BV6879-302
Pine Green /
White / (White)



BV6879-410
Obsidian / White
/ (White)



BV6879-463
Royal Blue /
White / (White)



BV6879-657
University Red /
White / (White)

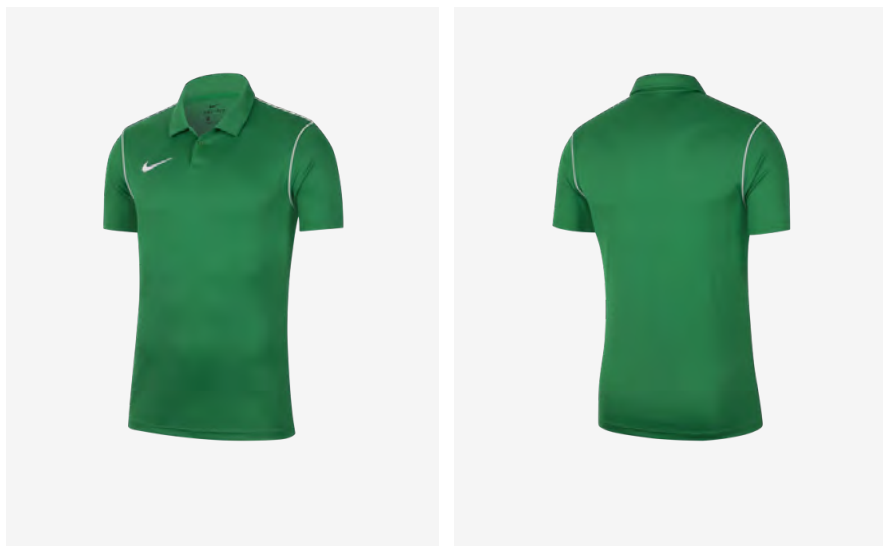


BV6879-719
Tour Yellow /
Black / (Black)

Product Features

- This product is made with 100% recycled polyester fibers
- Dri-FIT technology helps keep you dry and comfortable
- Standard fit for a relaxed, easy feel
- Fold-over collar with a two-button placket delivers timeless style
- Shoulder piping inspires a classic football look

 Sustainable materials



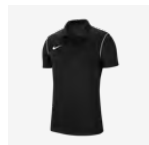
Carryover
Park 20 Polo (Youth)

Lifecycle

January 2020 - December 2025

Available in

XS - S - M - L - XL



BV6903-010
 Black / White /
 (White)



BV6903-100
 White / Black /
 (Black)



BV6903-302
 Pine Green /
 White / (White)



BV6903-451
 Obsidian / White
 / (White)



BV6903-463
 Royal Blue /
 White / (White)



BV6903-657
 University Red /
 White / (White)



BV6903-719
 Tour Yellow /
 Black / (Black)

Product Features

- This product is made with 100% recycled polyester fibers
- Dri-FIT technology helps keep you dry and comfortable
- Standard fit for a relaxed, easy feel
- Fold-over collar with a two-button placket delivers timeless style
- Shoulder piping inspires a classic football look



Carryover
Park 20 Crew Top



Lifecycle

January 2020 - December 2025

Available in

S - M - L - XL - 2XL



BV6875-010
 Black / White /
 (White)



BV6875-100
 White / Black /
 (Black)



BV6875-302
 Pine Green /
 White / (White)



BV6875-410
 Obsidian / White
 / (White)



BV6875-463
 Royal Blue /
 White / (White)



BV6875-657
 University Red /
 White / (White)



BV6875-719
 Tour Yellow /
 Black / (Black)

Product Features

- 100% Polyester
- Dri-FIT technology helps you stay dry, comfortable and focused
- Standard fit for a relaxed, easy feel
- Shoulder piping inspires a classic football look



Carryover
Park 20 Crew Top (Youth)



Lifecycle

January 2020 - December 2025

Available in

XS - S - M - L - XL



BV6901-010
 Black / White /
 (White)



BV6901-100
 White / Black /
 (Black)



BV6901-302
 Pine Green /
 White / (White)



BV6901-451
 Obsidian / White
 / (White)



BV6901-463
 Royal Blue /
 White / (White)



BV6901-657
 University Red /
 White / (White)




BV6901-719
 Tour Yellow /
 Black / (Black)

Product Features

- 100% Polyester
- Dri-FIT technology helps you stay dry, comfortable and focused
- Standard fit for a relaxed, easy feel
- Shoulder piping inspires a classic football look



 Sustainable materials



Carryover
Park 20 Rain Jacket

Lifecycle

January 2020 - December 2025

Available in

S - M - L - XL - 2XL



BV6881-010
Black / White /
(White)



BV6881-060
Anthracite /
Anthracite /
(White)



BV6881-302
Pine Green /
White / (White)



BV6881-410
Obsidian / White
/ (White)



BV6881-463
Royal Blue /
White / (White)



BV6881-657
University Red /
White / (White)



BV6881-719
Tour Yellow /
Black / (Black)

Product Features

- This product is made with at least 75% recycled polyester fibers
- Dri-FIT technology and water-repellant fabric help you stay dry in light rain
- Side pockets with mesh lining help keep belongings safe and dry
- Shoulder piping inspires a classic football look



 Sustainable materials



Carryover
Park 20 Rain Jacket (Youth)

Lifecycle

January 2020 - December 2025

Available in

XS - S - M - L - XL



BV6904-010
 Black / White /
 (White)



BV6904-060
 Anthracite /
 Anthracite /
 (White)



BV6904-302
 Pine Green /
 White / (White)



BV6904-451
 Obsidian / White
 / (White)



BV6904-463
 Royal Blue /
 White / (White)



BV6904-657
 University Red /
 White / (White)



BV6904-719
 Tour Yellow /
 Black / (Black)

Product Features

- This product is made with 100% recycled polyester fibers
- Dri-FIT technology and water-repellant fabric help you stay dry in light rain
- Side pockets with mesh lining help keep belongings safe and dry
- Shoulder piping inspires a classic football look



Carryover
Park 20 Knit Track Jacket



Lifecycle

January 2020 - December 2025

Available in

S - M - L - XL - 2XL



BV6885-010
 Black / White /
 (White)



BV6885-100
 White / Black /
 (Black)



BV6885-302
 Pine Green /
 White / (White)



BV6885-410
 Obsidian / White
 / (White)



BV6885-463
 Royal Blue /
 White / (White)



BV6885-657
 University Red /
 White / (White)



BV6885-719
 Tour Yellow /
 Black / (Black)

Product Features

- 100% Polyester
- Dri-FIT technology helps you stay dry and comfortable
- Knit fabric feels soft and comfortable
- Standard fit for a relaxed, easy feel
- Side pockets with mesh lining help keep your belongings safe and dry



Carryover
Park 20 Knit Track Jacket
 (Youth)



Lifecycle

January 2020 - December 2025

Available in

XS - S - M - L - XL



BV6906-010
 Black / White /
 (White)



BV6906-100
 White / Black /
 (Black)



BV6906-302
 Pine Green /
 White / (White)



BV6906-451
 Obsidian / White
 / (White)



BV6906-463
 Royal Blue /
 White / (White)



BV6906-657
 University Red /
 White / (White)




BV6906-719
 Tour Yellow /
 Black / (Black)

Product Features

- 100% Polyester
- Dri-FIT technology helps you stay dry and comfortable
- Knit fabric feels soft and comfortable
- Standard fit for a relaxed, easy feel
- Side pockets with mesh lining help keep your belongings safe and dry



 Sustainable materials



Carryover
Park 20 Knit Short

Lifecycle

January 2020 - December 2025

Available in

S - M - L - XL - 2XL



CW6152-010
 Black / Black /
 (White)




CW6152-451
 Obsidian /
 Obsidian /
 (White)

Product Features

- This product is made with 100% recycled polyester fibers
- Dri-FIT technology helps keep you dry and comfortable
- Zippered side pockets let you secure your essentials
- Elastic waistband stretches for a secure fit
- Standard fit for a relaxed, easy feel



 Sustainable materials



Carryover
Park 20 Knit Short (Youth)

Lifecycle

January 2020 - December 2025

Available in

XS - S - M - L - XL



DB8244-010
 Black / Black /
 (White)



DB8244-451
 Obsidian /
 Obsidian /
 (White)

Product Features

- This product is made with 100% recycled polyester fibers
- Dri-FIT technology helps keep you dry and comfortable
- Zippered side pockets let you secure your essentials
- Elastic waistband stretches for a secure fit
- Standard fit for a relaxed, easy feel



Carryover
Park 20 Knit Pant

Lifecycle

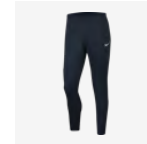
January 2020 - December 2025

Available in

S - M - L - XL - 2XL



BV6877-010
 Black / Black /
 (White)



BV6877-410
 Obsidian /
 Obsidian /
 (White)

Product Features

- 100% Polyester
- Dri-FIT technology helps keep you dry and comfortable
- Panels on the calves make it easy to change with boots
- Side pockets hold your belongings
- Standard fit for a relaxed, easy feel
- Elastic waistband and drawcord



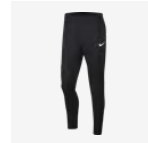
Carryover
Park 20 Knit Pant (Youth)

Lifecycle

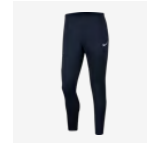
January 2020 - December 2025

Available in

XS - S - M - L - XL



BV6902-010
 Black / Black /
 (White)



BV6902-451
 Obsidian /
 Obsidian /
 (White)



Product Features

- 100% Polyester
- Dri-FIT technology helps keep you dry and comfortable
- Panels on the calves make it easy to change with boots
- Side pockets hold your belongings
- Standard fit for a relaxed, easy feel
- Elastic waistband and drawcord





Carryover

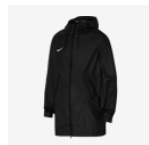
Academy Pro Rain Jacket

Lifecycle

July 2022 - December 2023

Available in

S - M - L - XL - 2XL



DJ6301-010
Black / (White)



DJ6301-451
Obsidian /
(White)

Product Features

- 100% polyester
- Nike Storm-FIT technology resists elements like wind and water to help keep you comfortable in harsh weather conditions
- A longer length extends coverage to keep more of you dry during training or before your match
- Loose fit for a roomy feel
- Drawcord at hood
- Side pockets
- Machine wash



Carryover

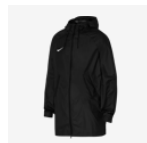
Academy Pro Rain Jacket (Youth)

**Lifecycle**

July 2022 - December 2023

Available in

XS - S - M - L - XL

DJ6324-010
Black / (White)DJ6324-451
Obsidian /
(White)**Product Features**

- 100% polyester
- Nike Storm-FIT technology resists elements like wind and water to help keep you comfortable in harsh weather conditions
- A longer length extends coverage to keep more of you dry during training or before your match
- Loose fit for a roomy feel
- Drawcord at hood
- Side pockets
- Machine wash



Carryover

Academy Pro 2 in 1 Jacket

**Lifecycle**

July 2022 - December 2023

Available in

S - M - L - XL - 2XL



DJ6306-010
Black / Black /
Black / (White)



DJ6306-451
Obsidian /
Obsidian /
Obsidian /
(White)

Product Features

- 100% polyester
- Nike Therma-FIT technology helps manage your body's natural heat to help keep you warm in cold-weather conditions
- Lightweight synthetic fill holds in the warmth without weighing you down
- Standard fit for a relaxed, easy feel
- The bottom panel zips on and off to give you the option for 2 different lengths of coverage
- Zippered side pockets
- Split back hem
- Machine wash



Carryover

Academy Pro 2 in 1 Jacket (Youth)



Lifecycle

July 2022 - December 2023

Available in

XS - S - M - L - XL



DJ6363-010
Black / Black /
Black / (White)



DJ6363-451
Obsidian /
Obsidian /
Obsidian /
(White)

Product Features

- 100% polyester
- Nike Therma-FIT technology helps manage your body's natural heat to help keep you warm in cold-weather conditions
- Lightweight synthetic fill holds in the warmth without weighing you down
- Standard fit for a relaxed, easy feel
- The bottom panel zips on and off to give you the option for 2 different lengths of coverage
- Zippered side pockets
- Split back hem
- Machine wash





Carryover

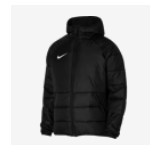
Academy Pro Fall Jacket

Lifecycle

July 2022 - December 2023

Available in

S - M - L - XL - 2XL



DJ6310-010
Black / Black /
Black / (White)



DJ6310-451
Obsidian /
Obsidian /
Obsidian /
(White)

Product Features

- 100% polyester
- Nike Therma-FIT technology helps manage your body's natural heat to help keep you warm in cold-weather conditions
- Lightweight synthetic fill in the sleeves holds in the warmth without weighing you down
- Standard fit for a relaxed, easy feel
- Elastic trim at cuffs
- Zippered side pockets
- Machine wash



Carryover

Academy Pro Fall Jacket (Youth)



Lifecycle

July 2022 - December 2023

Available in

XS - S - M - L - XL



DJ6364-010
Black / Black /
Black / (White)




DJ6364-451
Obsidian /
Obsidian /
Obsidian /
(White)

Product Features

- 100% polyester
- Nike Therma-FIT technology helps manage your body's natural heat to help keep you warm in cold-weather conditions
- Lightweight synthetic fill in the sleeves holds in the warmth without weighing you down
- Standard fit for a relaxed, easy feel
- Elastic trim at cuffs
- Zippered side pockets
- Machine wash



 Sustainable materials



Carryover Park 20 Fall Jacket

Lifecycle

January 2021 - December 2025

Available in

S - M - L - XL - 2XL



CW6157-010
Black / (White)



CW6157-451
Obsidian /
(White)

Product Features

- 100% Polyester
- Water-repellent fabric helps keep you dry when the elements turn
- Elongated zipper hits above your chin for extra coverage
- Elastic cuffs and hem help keep the jacket in place as you move
- Snap pockets let you secure your essentials
- Standard fit for a relaxed, easy feel
- Full zipper



 Sustainable materials



Carryover
Park 20 Fall Jacket (Youth)

Lifecycle

January 2021 - December 2025

Available in

XS - S - M - L - XL



CW6159-010
 Black / (White)




CW6159-451
 Obsidian /
 (White)

Product Features

- 100% Polyester
- Water-repellent fabric helps keep you dry when the elements turn
- Elongated zipper hits above your chin for extra coverage
- Elastic cuffs and hem help keep the jacket in place as you move
- Snap pockets let you secure your essentials
- Loose fit for a roomy feel
- Full zipper



 Sustainable materials



Carryover

Park 20 Winter Jacket

Lifecycle

July 2022 - December 2025

Available in

S - M - L - XL - 2XL - 3XL - 4XL



CW6156-010
Black / (White)



CW6156-451
Obsidian /
(White)

Product Features

- 100% Polyester
- Water-repellent finish helps keep you dry when it starts to rain
- Synthetic fill provides lightweight warmth
- Elongated, full-zip design covers you from the elements
- Loose fit for a roomy feel
- Snap-button pockets



 Sustainable materials



Carryover
Park 20 Winter Jacket (Youth)

Lifecycle

January 2021 - December 2025

Available in

XS - S - M - L - XL



CW6158-010
 Black / (White)




CW6158-451
 Obsidian /
 (White)

Product Features

- 100% Polyester
- Water-repellent finish helps keep you dry when it starts to rain
- Synthetic fill provides lightweight warmth
- Elongated, full-zip design covers you from the elements
- Loose fit for a roomy feel
- Snap-button pockets



 Sustainable materials



Carryover

Women's Park 20 Knit Short

Lifecycle

January 2020 - December 2025

Available in

XS - S - M - L - XL



CW6154-010
Black / Black /
(White)



CW6154-451
Obsidian /
Obsidian /
(White)

Product Features

- This product is made with 100% recycled polyester fibers
- Dri-FIT technology helps keep you dry and comfortable
- Elastic waistband and hidden drawcord give you a secure fit
- Zippered pockets secure your everyday essentials
- Standard fit for a relaxed, easy feel



Carryover

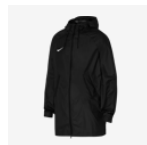
Women's Academy Pro Rain Jacket

**Lifecycle**

July 2022 - December 2023

Available in

XS - S - M - L - XL

DJ6316-010
Black / (White)DJ6316-451
Obsidian /
(White)**Product Features**

- 100% polyester
- Nike Storm-FIT technology resists elements like wind and water to help keep you comfortable in harsh weather conditions
- A longer length extends coverage to keep more of you dry during training or before your match
- Standard fit for a relaxed, easy feel
- Drawcord at hood
- Side pockets
- Machine wash



Carryover

Women's Academy Pro 2 in 1 Jacket



Lifecycle

July 2022 - December 2023

Available in

XS - S - M - L - XL



DJ6320-010
Black / Black /
Black / (White)



DJ6320-451
Obsidian /
Obsidian /
Obsidian /
(White)

Product Features

- 100% polyester
- Nike Therma-FIT technology helps manage your body's natural heat to help keep you warm in cold-weather conditions
- Lightweight synthetic fill holds in the warmth without weighing you down
- Standard fit for a relaxed, easy feel
- The bottom panel zips on and off to give you the option for 2 different lengths of coverage
- Zippered side pockets
- Split back hem
- Machine wash



Carryover

Women's Academy Pro Fall Jacket

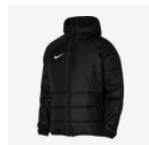


Lifecycle

July 2022 - December 2023

Available in

XS - S - M - L - XL



DJ6322-010
Black / Black /
Black / (White)




DJ6322-451
Obsidian /
Obsidian /
Obsidian /
(White)

Product Features

- 100% polyester
- Nike Therma-FIT technology helps manage your body's natural heat to help keep you warm in cold-weather conditions
- Lightweight synthetic fill in the sleeves holds in the warmth without weighing you down
- Standard fit for a relaxed, easy feel
- Elastic trim at cuffs
- Zippered side pockets
- Machine wash



 Sustainable materials



Carryover
Women's Park 20 Fall Jacket

Lifecycle

January 2021 - December 2025

Available in

XS - S - M - L - XL




DC8039-010
 Black / (White)

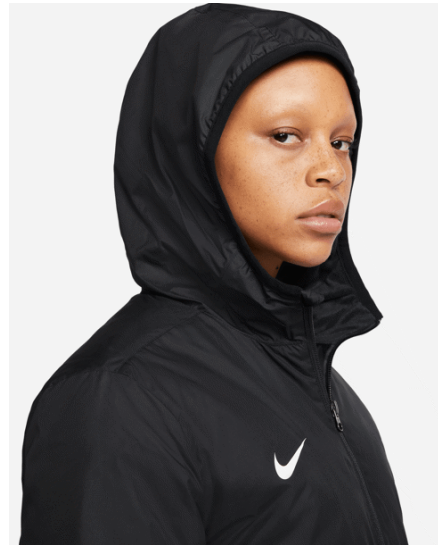


DC8039-451
 Obsidian / (White)

Product Features

- 100% Polyester
- Thermal fabric helps keep you warm
- Water-repellent treatment helps keep you dry in light rain
- Elastic cuffs and hem hold the jacket in place as you move
- Snap pockets secure your everyday essentials
- Standard fit for a relaxed, easy feel

 Sustainable materials



Carryover
Women's Park 20 Winter Jacket

Lifecycle

January 2021 - December 2025

Available in

XS - S - M - L - XL



DC8036-010
 Black / (White)



DC8036-451
 Obsidian / (White)

Product Features

- 100% Polyester
- Water-repellent finish helps you stay dry in light rain
- Synthetic-fill insulation provides warmth without weighing you down
- French terry lining at the hood, pockets and collar feels soft and warm
- Loose fit and longer length cover you from the elements
- Loose fit for a roomy feel
- Full-length zipper
- Snap pockets



New

Strike Crew Socks

Lifecycle

January 2023 - December 2024

Available in

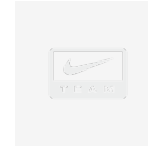
XS - S - M - L - XL



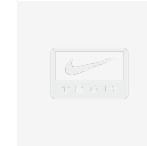
DH6620-010
Black / (White)



DH6620-100
White / (Black)



DH6620-410
Midnight Navy /
(White)



DH6620-463
Royal Blue /
(White)



DH6620-657
University Red /
(White)



Product Features

- 84% polyester/10% cotton/6% spandex
- Sweat-wicking technology keeps you dry and comfortable
- Nike Dri-FIT technology moves sweat away from your skin for quicker evaporation
- Cushioning in high-wear areas helps absorb impact as you run
- Machine wash



Carryover Training Bib

Lifecycle

January 2021 - December 2025

Available in

S - L - 2XL



DV7425-100
White / (Black)



DV7425-313
Action Green /
(Black)



DV7425-406
Photo Blue /
(Black)



DV7425-616
Vivid Pink /
(Black)



DV7425-702
Volt / (Black)



Product Features

- This product is made with 100% recycled polyester fibers
- Dri-FIT technology helps keep you dry and comfortable
- Mesh fabric feels lightweight and breathable
- Standard fit for a relaxed, easy feel
- 1 unit



Carryover
Team Football Beanie

Lifecycle

January 2019 - December 2023

Available in

ONE SIZE



AV9751-010
 Black / (White)



AV9751-060
 Anthracite /
 (White)

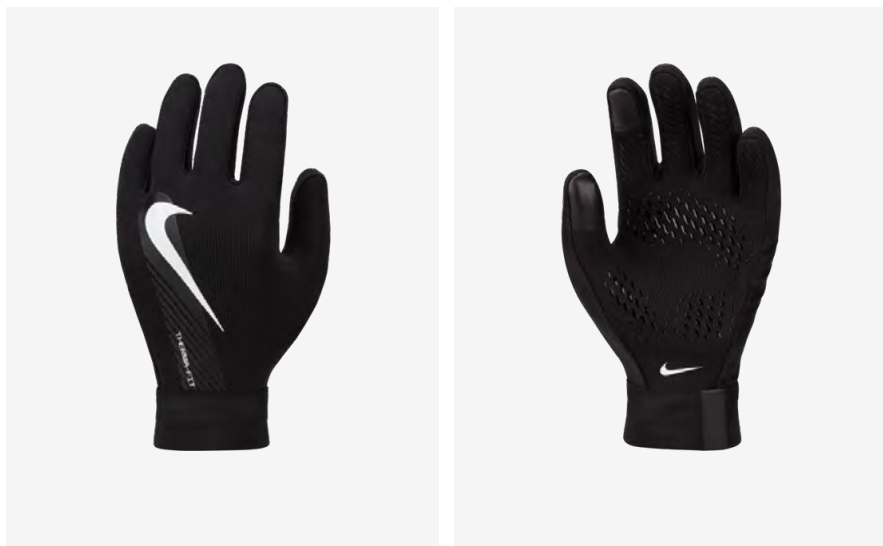


AV9751-451
 Obsidian /
 (White)

Product Features

- Body: 62% Cotton/38% Polyester. Cuff: 100% Acrylic
- Dri-FIT technology helps you stay dry and comfortable
- Soft, stretchy fabric feels warm and comfortable





New

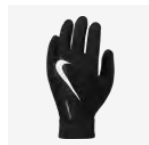
Academy Gloves Therma-FIT

Lifecycle

October 2022 - October 2024

Available in

S - M - L - XL



DQ6071-010
Black / Black /
(White)

Product Features

- 62% polyester/28% nylon/5% rubber/5% spandex
- Made with durable material that helps keep the cold out so you can stay focused on your game
- Nike Therma-FIT technology helps manage your body's natural heat to help keep you warm in cold-weather conditions
- Silicone on fingers and palms helps you grip the ball
- Flexible cuffs stretch for a secure fit
- Hand wash





New

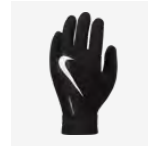
Academy Gloves Therma-FIT (Youth)

Lifecycle

October 2022 - October 2024

Available in

S - M - L



DQ6066-010
Black / Black /
(White)

Product Features

- 62% polyester/28% nylon/5% rubber/5% spandex
- Made with durable material that helps keep the cold out so you can stay focused on your game
- Nike Therma-FIT technology helps manage your body's natural heat to help keep you warm in cold-weather conditions
- Silicone on fingers and palms helps you grip the ball
- Flexible cuffs stretch for a secure fit
- Hand wash



LIFE STYLE LE



Carryover
Strike 22 Express Top S/S



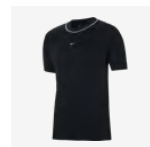
Lifecycle

January 2022 - December 2023

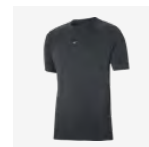
Futures only

Available in

S - M - L - XL - 2XL



DH9361-010
Black / (White)



DH9361-070
Dark Smoke
Grey / (White)



DH9361-463
Royal Blue /
(White)



DH9361-657
University Red /
(Black)

Product Features

- 100% cotton
- Design details specifically tailored for soccer's rising stars
- A relaxed, easy fit works together with cotton fabric to help keep you cool and composed while fine-tuning your skills
- Standard fit for a relaxed, easy feel
- Machine wash



Carryover Strike 22 Express Hoodie

Lifecycle

January 2022 - December 2023

Futures only

Available in

S - M - L - XL - 2XL



DH9380-010
Black / (White)



DH9380-070
Dark Smoke
Grey / (White)



DH9380-463
Royal Blue /
(White)



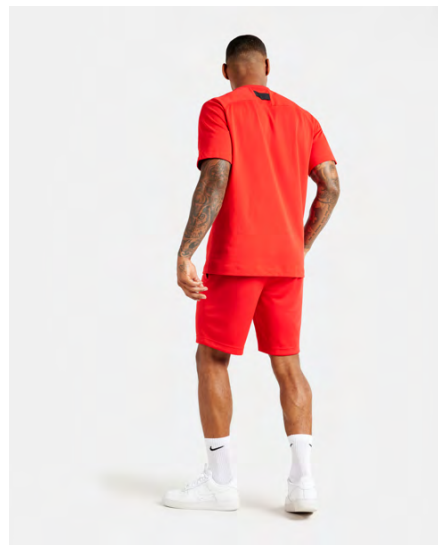
DH9380-657
University Red /
(Black)

Product Features

- Body/hood lining: 80% cotton/20% polyester. Rib: 98% cotton/2% spandex
- A relaxed fit paired with sweat-wicking fabric helps keep you cool and composed while fine-tuning your skills
- Brushed back fleece feels soft and warm
- Front pocket and zippered back pocket let you secure your essentials
- Ribbed cuffs and hem provide a stay-put fit
- Kimono-inspired sleeves give you room to move
- Standard fit for a relaxed, easy feel
- Machine wash



 Sustainable materials



Carryover Strike 22 Express Short

Lifecycle

January 2022 - December 2023

Futures only

Available in

S - M - L - XL - 2XL



DH9363-010
Black / (White)



DH9363-070
Dark Smoke
Grey / (White)



DH9363-451
Obsidian /
(White)



DH9363-657
University Red /
(Black)

Product Features

- 100% polyester
- Design details specifically tailored for soccer's rising stars
- A relaxed fit paired with sweat-wicking fabric helps keep you cool and composed while fine-tuning your skills
- Nike Dri-FIT technology moves sweat away from your skin for quicker evaporation, helping you stay dry and comfortable
- Elastic waistband stretches for a custom fit. Mesh construction adds lightweight breathability
- Zippered side pockets let you store your essentials
- Standard fit for a relaxed, easy feel
- Machine wash



Carryover Strike 22 Express Sock pant

Lifecycle

January 2022 - December 2023

Futures only

Available in

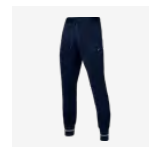
S - M - L - XL - 2XL



DH9386-010
Black / (White)



DH9386-070
Dark Smoke
Grey / (White)



DH9386-451
Obsidian /
(White)



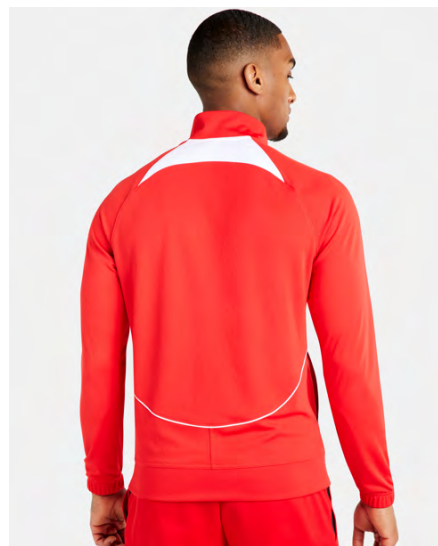
DH9386-657
University Red /
(Black)

Product Features

- 55% cotton/45% polyester
- A relaxed fit paired with sweat-wicking fabric helps keep you cool and composed while fine-tuning your skills
- Dri-FIT technology moves sweat from your skin for quicker evaporation—helping you stay dry and comfortable
- Zippered pockets let you store your essentials
- Sock cuffs at the ankles ensure that nothing comes between you and the ball
- Standard fit for a relaxed, easy feel
- Machine wash



 Sustainable materials



Carryover Academy Pro Anthem Jacket

Lifecycle

January 2022 - December 2023

Futures only

Available in

S - M - L - XL - 2XL



DH9384-010
Black / (White)



DH9384-070
Dark Smoke
Grey / (White)



DH9384-463
Royal Blue /
(White)



DH9384-657
University Red /
(White)

Product Features

- 100% polyester
- Moisture-wicking fabric to help keep sweat off your skin when your training heats up
- Dri-FIT technology helps keep you dry and comfortable
- Zippered pockets secure your essentials
- Slim fit for a tailored feel
- Machine wash





Carryover Park 20 Tee

Lifecycle

January 2021 - December 2025

Available in

S - M - L - XL - 2XL - 3XL



CZ0881-010
Black / (White)



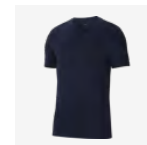
CZ0881-071
Charcoal
Heather / (White)



CZ0881-100
White / (Black)



CZ0881-302
Pine Green /
(White)



CZ0881-451
Obsidian /
(White)



CZ0881-463
Royal Blue /
(White)



CZ0881-657
University Red /
(White)



CZ0881-719
Tour Yellow /
(Black)

Product Features

- 100% Cotton
- Standard fit for a relaxed, easy feel
- Ribbed collar



Carryover
Park 20 Tee (Youth)



Lifecycle

January 2021 - December 2025

Available in

XS - S - M - L - XL



CZ0909-010
 Black / (White)



CZ0909-071
 Charcoal
 Heather / (White)



CZ0909-100
 White / (Black)



CZ0909-302
 Pine Green /
 (White)



CZ0909-451
 Obsidian /
 (White)



CZ0909-463
 Royal Blue /
 (White)



CZ0909-657
 University Red /
 (White)



CZ0909-719
 Tour Yellow /
 (Black)

Product Features

- 100% Cotton
- Standard fit for a relaxed, easy feel
- Ribbed collar





Carryover Park 20 Tee

Lifecycle

January 2021 - December 2025

Available in

S - M - L - XL - 2XL - 3XL



CW6936-010
Black / (White)



CW6936-100
White / (Black)



CW6936-451
Obsidian /
(White)



CW6936-657
University Red /
(White)

Product Features

- 75% Polyester/13% Cotton/12% Rayon
- The Nike Dri-FIT Park T-Shirt is made of soft, sweat-wicking fabric to help keep you comfortable during training or competition
- Nike Dri-FIT technology helps you stay dry and comfortable
- Lightweight fabric feels soft and slightly stretchy
- Standard fit for a relaxed, easy feel



Carryover

Park 20 Tee (Youth)

**Lifecycle**

January 2021 - December 2025

Available in

XS - S - M - L - XL

CW6941-010
Black / (White)CW6941-100
White / (Black)CW6941-451
Obsidian /
(White)CW6941-657
University Red /
(White)**Product Features**

- 57% Cotton/43% Polyester
- The Nike Dri-FIT Park T-Shirt is made of soft, sweat-wicking fabric to help keep you comfortable during training or competition
- Nike Dri-FIT technology helps you stay dry and comfortable
- Lightweight fabric feels soft and slightly stretchy
- Standard fit for a relaxed, easy feel
- Ribbed collar





Carryover Park 20 Tee

Lifecycle

January 2021 - December 2025

Available in

S - M - L - XL - 2XL - 3XL



CW6952-010
Black / (White)



CW6952-071
Charcoal
Heather / (White)



CW6952-100
White / (Black)

Product Features

- 57% Cotton/43% Polyester
- The Nike Dri-FIT Park T-Shirt is made of soft, sweat-wicking fabric to help keep you comfortable during training or competition
- Nike Dri-FIT technology helps you stay dry and comfortable
- Lightweight fabric feels soft and slightly stretchy
- Standard fit for a relaxed, easy feel
- Ribbed collar





Carryover Park 20 Polo

Lifecycle

April 2021 - December 2025

Available in

S - M - L - XL - 2XL - 3XL



CW6933-010
Black / White /
White



CW6933-071
Charcoal
Heather / White /
White



CW6933-100
White / Black /
Black



CW6933-451
Obsidian / White
/ White



CW6933-463
Royal Blue /
White / White



CW6933-657
University Red /
White / White

Product Features

- 75% Polyester/13% Cotton/12% Rayon
- Nike Dri-FIT technology helps keep you dry and comfortable
- Lightweight fabric feels soft and smooth
- Standard fit for a relaxed, easy feel
- 2-button placket

Carryover
Park 20 Polo (Youth)



Lifecycle

April 2021 - December 2025

Available in

XS - S - M - L - XL



CW6935-010
 Black / White /
 White



CW6935-071
 Charcoal
 Heather / Htr /
 White / White



CW6935-100
 White / Black /
 Black



CW6935-451
 Obsidian / White
 / White



CW6935-463
 Royal Blue /
 White / White



CW6935-657
 University Red /
 White / White

Product Features

- 75% Polyester/13% Cotton/12% Rayon
- Nike Dri-FIT technology helps keep you dry and comfortable
- Lightweight fabric feels soft and smooth
- Standard fit for a relaxed, easy feel
- 2-button placket





Carryover Park 20 Crewneck

Lifecycle

January 2021 - December 2025

Available in

S - M - L - XL - 2XL - 3XL



CW6902-010
Black / (White)



CW6902-063
Dark Grey
Heather / (Black)



CW6902-071
Charcoal
Heather / (White)



CW6902-451
Obsidian /
(White)

Product Features

- 82% Cotton/18% Polyester
- Fleece fabric feels soft and warm
- Ribbed cuffs and hem help keep the top in place as you move
- Standard fit for a relaxed, easy feel



Carryover

Park 20 Crewneck (Youth)

**Lifecycle**

January 2021 - December 2025

Available in

XS - S - M - L - XL

CW6904-010
Black / (White)CW6904-071
Charcoal
Heather / (White)CW6904-451
Obsidian /
(White)**Product Features**

- 82% Cotton/18% Polyester
- Fleece fabric feels soft and warm
- Ribbed cuffs and hem help keep the top in place as you move
- Standard fit for a relaxed, easy feel





Carryover Park 20 Hoodie

Lifecycle

January 2021 - December 2025

Available in

S - M - L - XL - 2XL - 3XL



CW6894-010
Black / White /
(White)



CW6894-071
Charcoal
Heather / White /
(White)



CW6894-101
White / White /
(Wolf Grey)



CW6894-302
Pine Green /
White / (White)



CW6894-451
Obsidian / White
/ (White)



CW6894-463
Royal Blue /
White / (White)



CW6894-657
University Red /
White / (White)



CW6894-719
Tour Yellow /
Black / (Black)

Product Features

- Body: 82% Cotton/18% Polyester. Hood lining: 100% Cotton
- Fleece fabric feels soft and warm
- Drawcord hood lets you adjust your coverage
- Standard fit for a relaxed, easy feel
- Front pocket



Carryover Park 20 Hoodie (Youth)



Lifecycle

January 2021 - December 2025

Available in

XS - S - M - L - XL



CW6896-010
Black / (White)



CW6896-071
Charcoal
Heather / (White)



CW6896-101
White / (Wolf
Grey)



CW6896-302
Pine Green /
(White)



CW6896-451
Obsidian /
(White)



CW6896-463
Royal Blue /
(White)



CW6896-657
University Red /
(White)



CW6896-719
Tour Yellow /
(Black)

Product Features

- Body: 82% Cotton/18% Polyester. Hood lining: 100% Cotton
- Fleece fabric feels soft and warm
- Ribbed cuffs and hem help hold the hoodie in place
- Standard fit for a relaxed, easy feel
- Front pocket





Carryover Park 20 Full-Zip-Hoodie

Lifecycle

January 2021 - December 2025

Available in

S - M - L - XL - 2XL - 3XL



CW6887-010
Black / White /
(White)



CW6887-063
Dark Grey
Heather / Black /
(Black)



CW6887-071
Charcoal
Heather / White /
(White)



CW6887-451
Obsidian / White
/ (White)



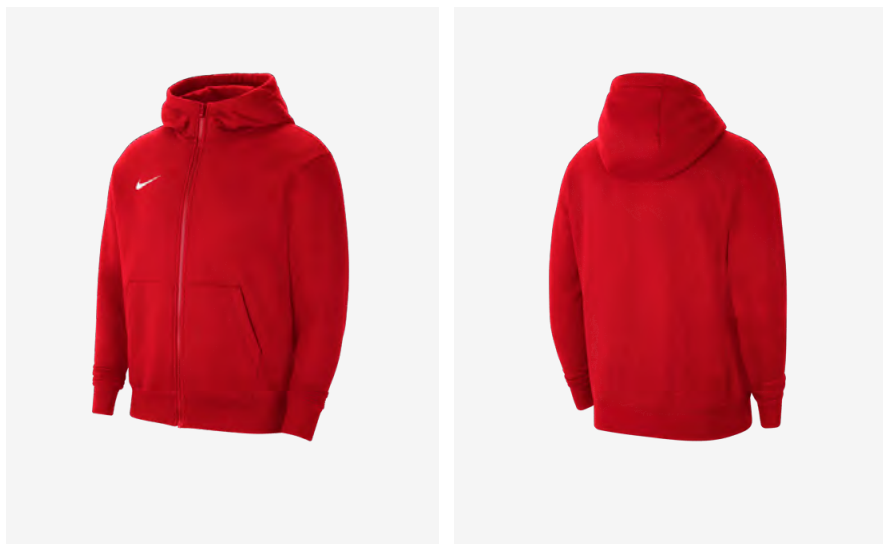
CW6887-657
University Red /
White / (White)

Product Features

- Body: 82% Cotton/18% Polyester. Hood lining: 100% Cotton
- Fleece fabric feels soft and warm
- Drawcord lets you wear the hood loose or cinch out the cold
- Standard fit for a relaxed, easy feel
- Full-length zipper
- Side Pockets

Carryover

Park 20 Full-Zip-Hoodie (Youth)

**Lifecycle**

January 2021 - December 2025

Available in

XS - S - M - L - XL



CW6891-010
Black / (White)



CW6891-063
Dark Grey
Heather / (Black)



CW6891-071
Charcoal
Heather / (White)



CW6891-451
Obsidian /
(White)



CW6891-657
University Red /
(White)

Product Features

- Body: 82% Cotton/18% Polyester. Hood lining: 100% Cotton
- Fleece fabric feels soft and warm
- Ribbed cuffs and hem help hold the hoodie in place
- Standard fit for a relaxed, easy feel
- Side pockets





Carryover Park 20 Short

Lifecycle

January 2021 - December 2025

Available in

S - M - L - XL - 2XL



CW6910-010
Black / White /
(White)



CW6910-063
Dark Grey
Heather / Black /
(Black)



CW6910-071
Charcoal
Heather / White /
(White)



CW6910-451
Obsidian / White
/ (White)

Product Features

- Body: 82% Cotton/18% Polyester. Pocket bags: 100% Polyester
- Fleece fabric feels soft and warm
- Drawcord waistband lets you adjust the fit
- Zippered pockets secure your everyday essentials
- Loose fit for a roomy feel



Carryover

Park 20 Short (Youth)

**Lifecycle**

January 2021 - December 2025

Available in

XS - S - M - L - XL



CW6932-010
Black / White /
(White)



CW6932-063
Dark Grey
Heather / Black /
(Black)



CW6932-071
Charcoal
Heather / White /
(White)



CW6932-451
Obsidian / White
/ (White)

Product Features

- Body: 82% Cotton/18% Polyester. Pocket bags: 100% Polyester
- Fleece fabric feels soft and warm
- Drawcord waistband lets you adjust the fit
- Zippered pockets secure your everyday essentials
- Standard fit for a relaxed, easy feel



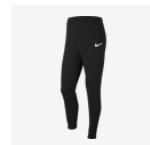
Carryover Park 20 Pant

Lifecycle

January 2021 - December 2025

Available in

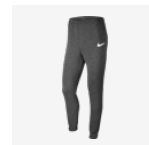
S - M - L - XL - 2XL



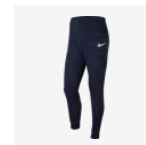
CW6907-010
Black / White /
(White)



CW6907-063
Dark Grey
Heather / Black /
(Black)



CW6907-071
Charcoal
Heather / White /
(White)



CW6907-451
Obsidian / White
/ (White)



Product Features

- Body: 82% Cotton/18% Polyester. Pocket bags: 100% Polyester
- Standard fit for a relaxed, easy feel
- Elastic waistband
- Zippered pockets
- Cuffed ankles



Carryover

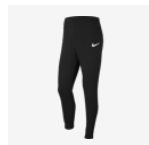
Park 20 Pant (Youth)

**Lifecycle**

January 2021 - December 2025

Available in

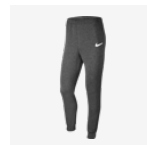
XS - S - M - L - XL



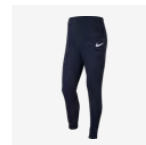
CW6909-010
Black / White /
(White)



CW6909-063
Dark Grey
Heather / Black /
(Black)



CW6909-071
Charcoal
Heather / White /
(White)



CW6909-451
Obsidian / White
/ (White)

Product Features

- Body: 82% Cotton/18% Polyester. Pocket bags: 100% Polyester
- Fleece fabric feels soft and warm
- Drawcord waistband lets you adjust the fit
- Zippered pockets secure your everyday essentials
- Standard fit for a relaxed, easy feel



Carryover

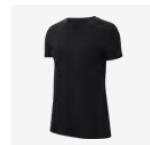
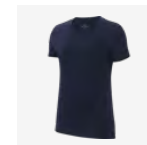
Women's Park 20 Tee

**Lifecycle**

January 2021 - December 2025

Available in

XS - S - M - L - XL

CZ0903-010
Black / (White)CZ0903-071
Charcoal
Heather / (White)CZ0903-100
White / (Black)CZ0903-302
Pine Green /
(White)CZ0903-451
Obsidian /
(White)CZ0903-463
Royal Blue /
(White)CZ0903-657
University Red /
(White)CZ0903-719
Tour Yellow /
(Black)**Product Features**

- 100% Cotton
- Standard fit for a relaxed, easy feel
- Ribbed collar



Carryover

Women's Park 20 Tee



Lifecycle

January 2021 - December 2025

Available in

XS - S - M - L - XL



CW6967-010
Black / (White)



CW6967-100
White / (Black)



CW6967-451
Obsidian /
(White)



CW6967-657
University Red /
(White)

Product Features

- 75% Polyester/13% Cotton/12% Rayon
- Dri-FIT technology helps you stay dry and comfortable
- Lightweight fabric feels soft and slightly stretchy
- Standard fit for a relaxed, easy feel



Carryover

Women's Park 20 Polo



Lifecycle

April 2021 - December 2025

Available in

XS - S - M - L - XL



CW6965-010
Black / White /
White



CW6965-071
Charcoal
Heather / White /
White



CW6965-100
White / Black /
Black



CW6965-451
Obsidian / White
/ White



CW6965-463
Royal Blue /
White / White



CW6965-657
University Red /
White / White

Product Features

- 75% Polyester/13% Cotton/12% Rayon
- Nike Dri-FIT technology helps keep you dry and comfortable
- Lightweight fabric feels soft and smooth
- Standard fit for a relaxed, easy feel
- 2-button placket





Carryover

Women's Park 20 Hoodie

Lifecycle

January 2021 - December 2025

Available in

XS - S - M - L - XL



CW6957-010
Black / White /
(White)



CW6957-071
Charcoal
Heather / White /
(White)



CW6957-101
White / White /
(Wolf Grey)



CW6957-302
Pine Green /
White / (White)



CW6957-451
Obsidian / White
/ (White)



CW6957-463
Royal Blue /
White / (White)



CW6957-657
University Red /
White / (White)



CW6957-719
Tour Yellow /
Black / (Black)

Product Features

- Body: 80% Cotton/20% Polyester. Hood lining: 100% Cotton
- Fleece fabric feels soft and warm
- Ribbed cuffs and hem help hold the hoodie in place
- Drawcord hood lets you adjust the fit
- Standard fit for a relaxed, easy feel
- Raglan sleeves
- Front pocket

Carryover

Women's Park 20 Full-Zip Hoodie



Lifecycle

January 2021 - December 2025

Available in

XS - S - M - L - XL



CW6955-010
Black / White /
(White)



CW6955-063
Dark Grey
Heather / Black /
(Black)



CW6955-071
Charcoal
Heather / White /
(White)



CW6955-451
Obsidian / White
/ (White)



CW6955-657
University Red /
White / (White)

Product Features

- Body: 80% Cotton/20% Polyester. Hood lining: 100% Cotton
- Fleece fabric feels soft and warm
- Large hood with drawcord lets you wear the hood loose or cinch out the cold
- Standard fit for a relaxed, easy feel
- Side pockets





Carryover

Women's Park 20 Short

Lifecycle

January 2021 - December 2025

Available in

XS - S - M - L - XL



CW6963-010
Black / White /
(White)



CW6963-063
Dark Grey
Heather / Black /
(Black)



CW6963-071
Charcoal
Heather / White /
(White)



CW6963-451
Obsidian / White
/ (White)

Product Features

- Body: 82% Cotton/18% Polyester. Pocket bags: 100% Polyester
- Fleece fabric feels soft and warm
- Drawcord waistband lets you adjust the fit
- Zippered pockets secure your everyday essentials
- Loose fit for a roomy feel





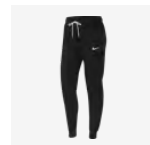
Carryover Women's Park 20 Pant

Lifecycle

January 2021 - December 2025

Available in

XS - S - M - L - XL



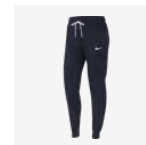
CW6961-010
Black / White /
(White)



CW6961-063
Dark Grey
Heather / Black /
(Black)



CW6961-071
Charcoal
Heather / White /
(White)



CW6961-451
Obsidian / White
/ (White)

Product Features

- Body: 80% Cotton/20% Polyester. Pocket bags: 100% Cotton
- Fleece fabric feels soft and warm
- Drawcord waistband lets you adjust the fit
- Zippered pockets secure your everyday essentials
- Standard fit for a relaxed, easy feel





EQUIPEMENT



Carryover Flight Ball (Fall 22)

Lifecycle

July 2022 - July 2023

Available in

5

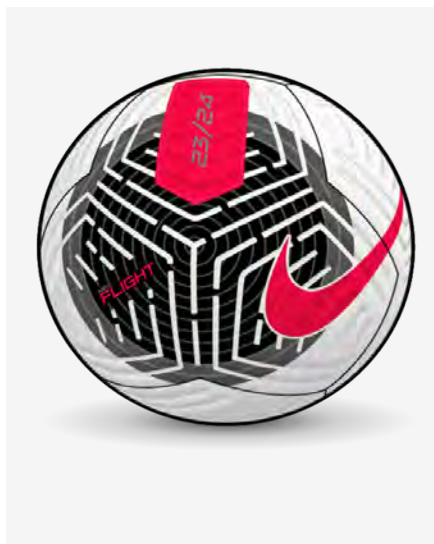


DN3595-100
White / Total
Orange / Black

Product Features

- 37% Synthetic Leather, 33% Rubber, 20% Polyester, 10% Cotton
- Nike Aerowsculpt technology uses molded grooves to disrupt airflow across the ball for less drag and more stable flight
- 3D-printed ink overlay fine-tunes ball flight to help you hit your target shot after shot, pass after pass
- All Conditions Control (ACC) technology adds a grippy texture in both wet or dry conditions
- 4-panel design fuse welded





New

Flight Ball (Fall 23)

Lifecycle

July 2023 - June 2024

Available in

5



FB2901-100
White / Black /
(Bright Crimson)

Product Features

- 37% Synthetic Leather, 33% Rubber, 20% Polyester, 10% Cotton
- Nike Aerowsculpt technology uses molded grooves to disrupt airflow across the ball for less drag and more stable flight
- 3D-printed ink overlay fine-tunes ball flight to help you hit your target shot after shot, pass after pass
- All Conditions Control (ACC) technology adds a grippy texture in both wet or dry conditions
- 4-panel design fuse welded





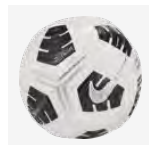
Carryover Club Elite Team Ball

Lifecycle

January 2021 - December 2023

Available in

5



CU8053-100
White / Black /
(Metallic Silver)

Product Features

- 40% Rubber/40% Synthetic Leather/15% Synthetic/5% Cotton
- Nike Aerowsculpt technology uses molded grooves for more consistent flight
- Textured casing gives you great touch and feel
- Rubber bladder helps maintain air pressure and shape
- 12-panel design





Carryover

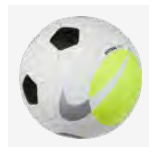
Futsal Pro Team Ball

Lifecycle

January 2021 - December 2023

Available in

PRO



DH1992-100
White / Volt /
(Silver)

Product Features

- 60% Rubber/15% Polyurethane/13% Polyester/12% EVA
- Textured surface gives you great touch and feel
- Hand-sewn construction means tighter seams for durability
- High-contrast graphics help you easily track the ball
- Official Futsal size and weight





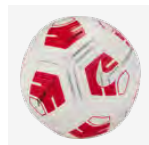
Carryover Strike Team 290g Ball

Lifecycle

January 2021 - June 2024

Available in

4 - 5



CU8062-100
White / Bright
Crimson / (Silver)

Product Features

- 60% Rubber/15% Polyurethane/13% Polyester/12% EVA
- Reduced weight makes it more suitable for young athletes
- Nike Aerowsculpt technology uses molded grooves for more consistent flight
- High-contrast graphics help you easily track the ball
- Machine-stitched casing enhances durability
- Reinforced rubber bladder for optimal air and shape retention
- 12-panel design





Carryover Park Team Ball

Lifecycle

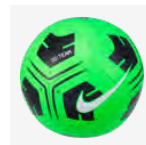
January 2021 - December 2023

Available in

3 - 4 - 5



CU8033-101
White / Black /
(Volt)



CU8033-310
Rage Green /
Black / (White)



CU8033-610
Crimson / Black
/ (White)



CU8033-720
Yellow / Violet /
(Bright Crimson)



CU8033-810
Orange / Black /
(White)

Product Features

- 60% Rubber/15% Polyurethane/13% Polyester/12% EVA
- Smooth surface has a consistent touch
- Durable design helps maintain air pressure and shape
- 12-panel design





Carryover

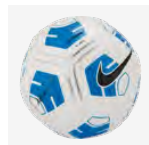
Strike Team 350g Ball

Lifecycle

January 2021 - June 2024

Available in

5



CU8064-100
White / Blue /
(Black)

Product Features

- 60% Rubber/15% Polyurethane/13% Polyester/12% EVA
- Reduced weight makes it more suitable for young athletes
- Nike Aerowsculpt technology uses molded grooves for more consistent flight
- High-contrast graphics help you easily track the ball
- Machine-stitched casing enhances durability
- Reinforced rubber bladder for optimal air and shape retention
- 12-panel design





Carryover

Academy Team IMS Ball

Lifecycle

January 2021 - December 2023

Available in

3 - 4 - 5



CU8047-100
White / Black /
(Volt)



CU8047-101
White / Black /
(Total Orange)



CU8047-102
White / Black /
(Light Blue Fury)



CU8047-720
Yellow / Violet /
(Bright Crimson)

Product Features

- 60% Rubber/15% Polyurethane/13% Polyester/12% EVA
- Nike Aerowsculpt technology uses molded grooves for more consistent flight
- Textured casing gives you great touch and feel
- Reinforced rubber bladder helps maintain air pressure and shape





New

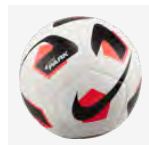
Park Team Ball 2.0

Lifecycle

January 2023 - June 2024

Available in

3 - 4 - 5



DN3607-100
White / Bright
Crimson / (Black)



DN3607-765
Yellow Strike /
Sapphire /
(Black)



DN3607-803
Total Orange /
White / (Thunder
Blue)

Product Features

- 60% rubber / 15% polyurethane / 13% polyester / 12% EVA
- 12-panel design
- Durable design helps maintain air pressure and shape
- Textured surface has a consistent touch
- Designed for easy tracking across the pitch





Carryover Pitch Team Ball

Lifecycle

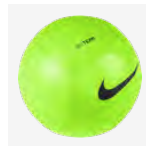
January 2021 - June 2024

Available in

3 - 4 - 5



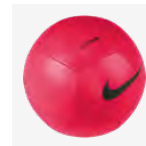
DH9796-100
White / (Black)



DH9796-310
Electric Green /
(Black)



DH9796-410
Blue Fury /
(Black)



DH9796-635
Bright Crimson /
(Black)

Product Features

- 60% Rubber/15% Polyurethane/13% Polyester/12% EVA
- Smooth, durable casing has a consistent feel
- Rubber bladder helps maintain air pressure and shape





Carryover Academy Team L Hardcase

Lifecycle

January 2021 - December 2024

Available in

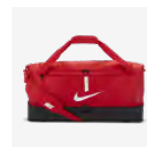
L



CU8087-010
Black / Black /
(White)



CU8087-410
Midnight Navy /
Black / (White)



CU8087-657
University Red /
Black / (White)

Product Features

- 100% Polyester
- Main body compartment offers spacious storage
- Hard bottom helps keep items safe from bumps and scrapes
- Zippered wet/dry compartment at the bottom keeps things clean and organized
- Handles can attach together for an alternate carrying option
- 64L x 31W x 30H cm/ 59L





Carryover

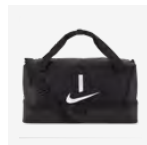
Academy Team M Hardcase

Lifecycle

January 2021 - December 2024

Available in

M



CU8096-010
Black / Black /
(White)



CU8096-410
Midnight Navy /
Black / (White)



CU8096-657
University Red /
Black / (White)

Product Features

- 100% Polyester
- Main body compartment offers spacious storage
- Hard bottom helps keep items safe from bumps and scrapes
- Zippered wet/dry compartment at the bottom keeps gear clean and organized
- Handles can attach together for an alternate carrying option
- 53L x 30W x 27H cm/ 37L





Carryover

Academy Team L Duffel Bag

Lifecycle

January 2021 - December 2024

Available in

L



CU8089-010
Black / Black /
(White)



CU8089-410
Midnight Navy /
Black / (White)

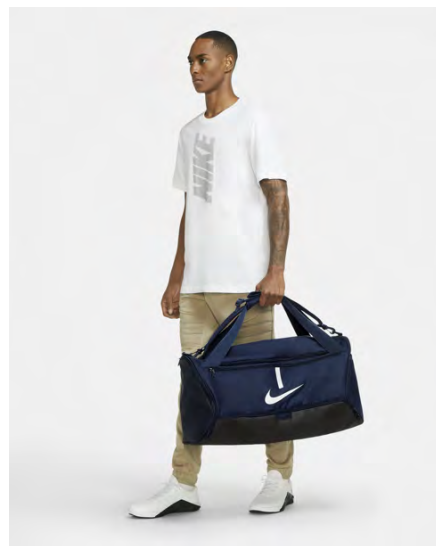


CU8089-657
University Red /
Black / (White)

Product Features

- 100% Polyester
- Large main compartment is spacious enough for your ball and more
- Zippered wet/dry compartment at the bottom helps keep things clean and organized
- Hand and shoulder straps let you carry your gear comfortably
- Small interior pocket and zippered exterior pockets hold small valuables
- 70L x 36W x 35H cm / 95L





Carryover

Academy Team M Duffel Bag

Lifecycle

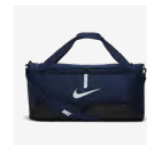
January 2021 - December 2024

Available in

M



CU8090-010
Black / Black /
(White)



CU8090-410
Midnight Navy /
Black / (White)



CU8090-657
University Red /
Black / (White)

Product Features

- 100% Polyester
- Main compartment is spacious enough for your ball and more
- Zippered wet/dry compartment at the bottom helps keep things clean and organized
- Hand and shoulder straps let you carry your gear comfortably
- Small interior pocket and zippered exterior pockets hold small valuables
- 64L x 30W x 31H cm / 60L





Carryover

Academy Team S Duffel Bag

Lifecycle

January 2021 - December 2024

Available in

S



CU8097-010
Black / Black /
(White)



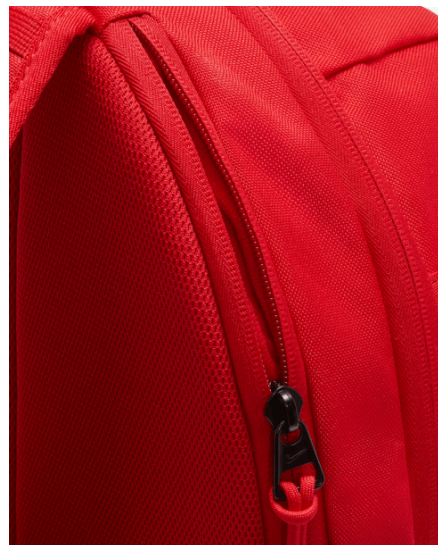
CU8097-410
Midnight Navy /
Black / (White)



CU8097-657
University Red /
Black / (White)

Product Features

- 100% Polyester
- Zippered main compartment offers spacious storage
- Separate wet/dry compartment helps keep things clean and organized
- Hand and shoulder straps let you carry your gear comfortably
- Small interior pocket and zippered exterior pockets hold small valuables
- 53L x 26W x 28H cm / 41L



New

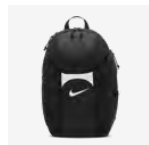
Academy Team Backpack

Lifecycle

January 2023 - December 2024

Available in

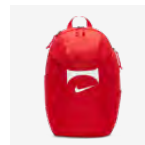
ONE SIZE



DV0761-011
Black / Black /
(White)



DV0761-410
Midnight Navy /
Midnight Navy /
(White)



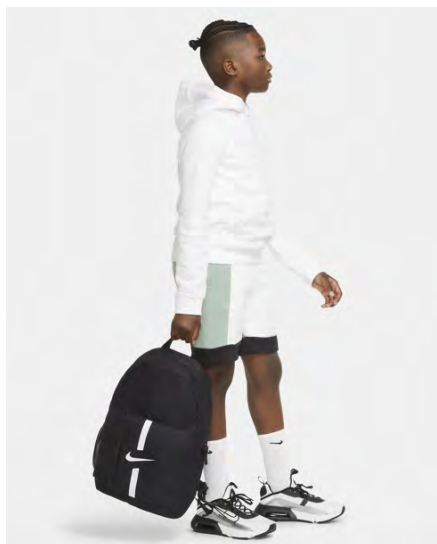
DV0761-657
University Red /
University Red /
(White)

Product Features

- Body: 58% polyester/42% nylon. Lining: 100% polyester
- 19"H X 13"W X 7"D
- Nike Storm-FIT technology resists elements like wind and water to help keep you comfortable in harsh weather conditions
- Rain fly provides weather coverage, and features a jock tag to easily identify your bag
- A side pocket with velcro closure houses the Storm-FIT rainfly
- Enlarged tech pocket provides space for the latest technology
- Padded shoulder straps are adjustable for a comfortable fit
- Zipper pulls have been updated to make access easier in all conditions
- Mesh has been updated for enhanced ventilation
- Spot clean

Carryover

Academy Team Backpack (Youth)



Lifecycle

January 2021 - December 2024

Available in

ONE SIZE



DA2571-010
Black / Black /
(White)



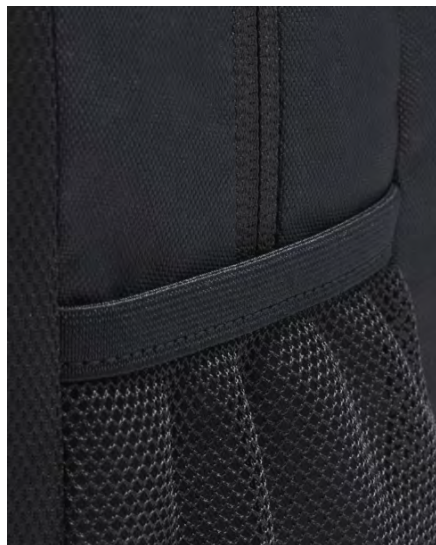
DA2571-411
Midnight Navy /
Black / White



DA2571-657
University Red /
Black / White

Product Features

- 100% Polyester
- Wet/dry compartment helps keep things clean and organized
- Curved shoulder straps and back panel are padded for extra comfort
- Back pocket features a felt interior to safely store your phone or keys
- Mesh pocket on the side is designed to hold a water bottle
- Front pocket is large enough to fit a soccer ball
- Internal sleeve safely stores up to a 15" laptop
- 45H x 30W x 13D cm/ 22L





Carryover

Nike Club Team Roller Bag

Lifecycle

January 2019 - December 2024

Available in

ONE SIZE

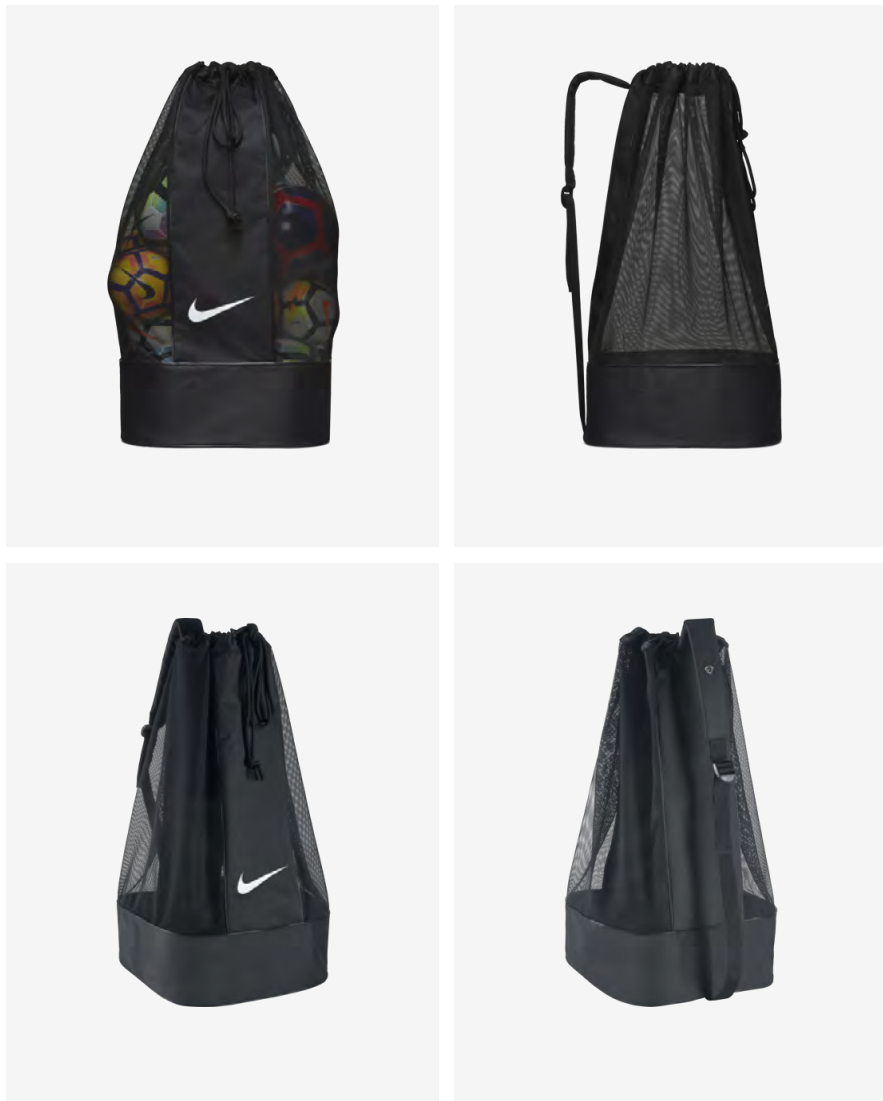


BA5199-010
Black / Black /
(White)

Product Features

- 100% Polyester
- Adjustable handle and wheels for easier hauling
- Zippered main compartment provides secure storage
- Grab handle on the side gives an alternative carrying option
- 82L x 35W x 38H cm /120L





Carryover

Nike Club Team Ball Bag

Lifecycle

January 2019 - December 2024

Available in

ONE SIZE



BA5200-010
Black / Black /
(White)

Product Features

- Lining: 100% Polyester. Body: 88% Polyester/12% Nylon
- Adjustable shoulder straps are padded for comfortable carrying
- Drawcord closure lets you quickly access your gear
- Lightweight mesh promotes ventilation
- 86L x 44H x 44W cm / 160L





niketeamfootball.com