



Spare Parts Catalog

9 S 75

Material number: 1308.050.106

ZF Friedrichshafen AG

Hauptverwaltung

80038 Friedrichshafen

Deutschland

Telefon: +49 7541 77-0

Telefax: +49 7541 77-908000

www.zf.com

zuständiges Werk:

Friedrichshafen

Notes relating to the spare parts catalog

Setup of the spare parts catalog

- Cover sheet
- Technical Cover (only in SDM print)
- Overview of figures
- Figure
- Associated parts list
- Next figure
- Associated parts list
- ...

Figure and parts list



Overview of figures

Bildtafel Figure	Sachnummer Product number	Benennung (Description)	Technische Info Technical info	Description (Benennung)	Menge Quantity	Einheit Unit
068.08.17	1316.170.001	AUSLEGER	WL	SHIFT TURRET	1	Stk
068.08.06	1316.170.031	DECKEL	WL*H-H *VM	COVER	1	Stk
068.08.14	1316.170.808	DECKEL	WL*AUSL+GEH*H-H*HF160N	COVER	1	Stk
08	1316.170.441	ANSCHLUSSTEILE	WL*NG-VORB*RG-SCHL*168N *BAJONETT	CONNECTING PARTS	1	Stk

The "gap" indicates that there is no separate graphics panel (poster) for this assembly
The parts of this assembly are shown with the same mid-section number on the figure

1 Positions and subpositions

Pos.	Sachnummer Product number	Benennung (Description)	Technische Info Technical info	Description (Benennung)	Menge Quantity	Einheit Unit
0370	1315.201.054	RUECKLAUFBOLZEN	KPL.16S151*SG*L= 79	REV.IDLER SHAFT	1	Stk
/0120	0631.329.293	SPANNSTIFT		SLOT. PIN	1	Stk

Positions marked with "/" are the individual items of a completion
For example: Position 0370 contains a centering pin with the position /0120

2 Combinations with standardized parts

Pos.	Sachnummer Product number	Benennung (Description)	Technische Info Technical info	Description (Benennung)	Menge Quantity	Einheit Unit
0630		VERSCHL.SCHR.		SCREW PLUG	1	Stk
	0636.302.067	VERSCHL.SCHR.		SCREW PLUG	1	Stk
	0634.801.249	DICHTRING	A 26 X 31	SEALING RING	1	Stk

The parts list shows the components included in the combination of standardized parts

3 Depiction of position/item number on the figure and in the parts list

01.620 - on the figure 01 relates to the assembly in which the position is included. Due to program-related reasons, it is shown on the figure.

0620 - in the parts list

Pos.	Sachnummer Product number	Benennung (Description)	Technische Info Technical info	Description (Benennung)	Menge Quantity	Einheit Unit
0620	0732.040.736	DRUCKFEDER		COMPRESSION SPRING	1	Stk

4 *-Positions

Positions marked with an * are optional i.e. inclusion in the parts list is not mandatory.
The following note is shown on the figure

je nach Stücklistenausführung
depending on spec. number
*
suivant la nomenclature
secondo la distinta base

5 Parts, dotted display

Parts with dotted display on the figure are only used for orientation of other parts



Pos.	Information	Amendment number
001	Use case -----	
002	Customer BMC Samayi ve Ticaret A.S.	
003	City Izmir	
004	DUNS 62-812-1097	
005	Vehicle / Apparatus -----	
006	Sales Name M202	
007	Manufacturer BMC Samayi ve Ticaret A.S.	
008	Engineering Name	
009	Product Use TRUCK	
010	Vehicle/Hardware Type ROAD TRACTOR	
011	SOP	
012	Engine	
013	Sales Designation	
014	Manufacturer Cummins Engine Co.	
015	Eng.Displ.	
016	Cylinder	
017	Nom. power 157 kW	
018	RPM at nom. power 2200 1/min	
019	Nom. torque 820 Nm	
020	RPM at nom. torque 1500 1/min	
021	Classification use case -----	
022	DESIGNATION, CLUTCH 380	
023	MANUFACTURER, CLUTCH VALEO	
026	DYNAMIC TYRE RADIUS 526 mm	
027	REAR AXLE RATIO 6.14	
032	PERMISS.GROSS COMBIN.WEIGHT 40 t	
033	Product description -----	
034	INSTALLATION POS TRANSMISSION VERTICAL	
035	TRANSMISSION ATTACHMENT FLANGE-MOUNTED	
036	RATIO, BOTTOM GEAR 13.16	
037	RATIO, TOP GEAR 1	
038	SET OF RATIOS DG	



Pos.	Information	Amendment number
039	RATIO, 1ST GEAR 13.16	
040	RATIO, 2ND GEAR 8.91	
041	RATIO, 3RD GEAR 6.5	
042	RATIO, 4TH GEAR 4.67	
043	RATIO, 5TH GEAR 3.5	
044	RATIO, 6TH GEAR 2.55	
045	RATIO, 7TH GEAR 1.86	
046	RATIO, 8TH GEAR 1.33	
047	RATIO, 1ST GEAR REVERSE 11.74	
048	RATIO, 9TH GEAR 1	
049	UEBERSETZUNG PLANETENSATZ 3.5	
050	NUMBER OF PLANETARY GEARS 5	
052	DESIGN, SHIFT SYSTEM TURNING SHAFT	
053	POSITION, GEAR SHIFT SYSTEM HORIZONTAL RIGHT	
054	DESIGN, SHIFT PATTERN H-H	
056	VERSION TUBE R/C PLASTIC PIPING	
061	DESIGN, SEPARATING CLUTCH FULL-SYNCHRONIZED	
062	REFERENCE LENGTH INPUT SHAFT 278 mm	
063	STANDARD TYPE INPUT SHAFT SAE	
064	NUMBER OF WEDGES INPUT SHAFT 10	
065	VERSION OF INPUT SHAFT FORM C	
066	DIAMETER, JOURNAL, INPUT SHAFT 25 mm	
067	NOMINAL DIAMETER INPUT SHAFT 1.75 in	
068	TYPE FIT SPIGOTS INPUT SHAFT F7	
069	DIAMETER SHAFT OF INPUT SHAFT 44 mm	
070	BUSH VARIANT INPUT SHAFT WITHOUT GROOVE	
074	DIAMETER, RELEASE FLANGE 57 mm	
075	DICHTKAPPE AUSRUECKLAGERFL n	
076	TYPE FIT RELEASE BEARING FLA. E8	
077	DESIGN BEARING OUTPUT STANDARD SUSPENSION	
078	OUTER DIA. OUTPUT FLANGE RA 180 mm	
080	NO.OF BORES OUTPUT FLANGE HA1 4	



Pos.	Information	Amendment number
081	BORE DIA. OUTPUT FLANGE RA 15 mm	
084	REF. LENGTH OUTPUT FLANGE RA 84 mm	
088	DIMENSION SHIFT TURRET DIST. 157.5 mm	
089	MEAS. LOC. SHIFT TURRET DIST. CENTRE BALL JOINT	
096	RADIUS 1 SHIFT LEVER 85 mm	
099	LOCATION GEAR SHIFT LEVER TAPER INSIDE	
102	LENGTH G CONNECTION PART 80 mm	
104	LEVER POSITION SHIFTING OUTPUT C	
105	SHIFT CONNECTION DISTANCE S 100 mm	
107	HINWEIS ABSTUETZPUNKT INSTALLATION DRAWING	
109	ADJUST.DIMENSION DRAW BAR Z 165 mm	
111	G.SHIFT LEVER ANGL.EPSILON MIN 15 GRAD	
112	G.SHIFT LEVER ANGL.EPSILON MAX 20 GRAD	
113	SPRING ARRANGEMENT Q8	
114	TOOLING SET OF SPRINGS W013	
115	SPRING FORCE DETENT PLUNGER RG 120 N	
117	SPRING FORCE,GEAR DETENT NG+GG 400 N	
118	DESIGN JOINT BALL JOINT NOT SPRING-LOAD	
120	DESIGN ASSEMBLY BALL JOINT JOINT POS.Y	
121	NORMENART HOHLFLANSCH HEXAGON SCREW	
122	SELECTION PATTERN VARIANT GEAR SHIFT PATTERN 1	
127	UEBERSETZUNG MECH.TACHOANTR. 1.555	
129	LAGEPOSITION MECH.TACHOANTRIEB 10	
131	HINWEIS LAGEPOS MECH.TACHOANTR INSTALLATION DRAWING	
132	SWITCH, REVERSE GEAR y	
133	DESIGN, RG (REV.GEAR) SWITCH CLOSING	
134	NOTE ON SWITCH, REVERSE GEAR GEAR SHIFT RAIL	
135	PROT. CAP SWITCH, REVERSE GEAR n	
138	SWITCH, NEUTRAL GEAR y	
139	DESIGN,NG(NEUTRAL GEAR)SWITCH OPENING SWITCH	
140	PROT.CAP SWITCH, NEUTRAL GEAR n	
145	REF.LENGTH,RELEASE BEAR.FLAN 170 mm	



Pos.	Information	Amendment number
147	FUNCTION OF R/C SWITCH GP	
148	DESIGN, GP SWITCH CLOSING	
149	PROTECTING CAP GP SWITCH n	
158	ATTACHED AGRREGATES 1 WITHOUT WSK	
159	VER. TRANSMISSION VENTILATION BREATHER	
162	ATTACHMENT VARIANT, RETARDER WITHOUT GROOVE	
183	DESIGN PULSE SENSOR INPUT WITHOUT GROOVE	
184	PROT.CAP PULSE SENSOR INPUT n	
197	NOTE ON OIL FILL FILL IN OVERFLOW	
198	POSITION, OIL FILLER HOUSING, LH SIDE	
199	OIL CAPACITY, GEARBOX 9.5 dm3	
200	OIL FILL VARIANT WITHOUT GROOVE	
202	OIL GRADE PERMISSIBLE ACC. TO TE-ML02	
204	COLOR NOT	
207	CODING OUTER CONSERVATION KA1	
208	SCOPE OUTER CONSERVATION T	
209	CODING INNER CONSERVATION K11	
210	CONSERVATION SPECIFICATION ZFN 916	
211	Documents -----	
212	GEARBOX Drawing 1308.050.003	
213	SET OF SPRINGS Drawing 1308.149.020	
214	GEARSHIFT SYST. Drawing 1308.172.020	
215	9-GANG-GETRIEBE Drawing 1308.600.008	
216	1308.030.002 Drawing 1308.030.002	
217	Alias ID -----	
218	BMC Samayi ve Ticaret A.S. 52RS002695	

Assembly group overview

Material number: 1308.050.106

9 S 75 /

Page 1 from 2



Graphics	Pos.	Material number	Name	Quantity	Amend. no.	Techn. Info.
064.01.20-1	110	1308.101.111	GEARBOX HOUSING	1		
064.01.03-1	116	1308.101.066	HOUSING	1		
064.01.03-1	120	1308.101.830	GEARBOX HOUSING	1		
064.02.40-1	140	1308.102.425	CONNPLATE	1		
064.02.01-1	150	1308.102.806	INPUT SHAFT	1		
064.02.01-1	910	1308.102.029	INPUT SHAFT	1		
064.03.80-1	180	1308.103.804	LAYSHAFT	1		
064.03.01-1	920	1308.103.004	LAYSHAFT	1		
064.04.01-1	190	1308.104.801	MAIN SHAFT	1		
064.04.01-1	930	1308.104.010	MAIN SHAFT	1		
064.05.02-1	220	1308.105.008	RETURN	1		
064.06.10-1	230	1308.106.108	GEAR SHIFT SYSTEM	1		
064.06.40-1	236	1308.106.449	CONNECTING PARTS	1		
064.07.14-1	282	1308.107.817	GEAR SHIFT HOUSING	1		
064.07.14-1	910	1308.107.050	GEAR SHIFT HOUSING	1		
064.07.14-1	914	1308.107.414	GEAR SHIFT SHAFT	1		
064.08.02-1	926	1308.170.009	SHIFT TURRET	1		
064.08.03-1	934	1308.170.803	COVER	1		
064.12.04-1	922	1308.149.024	SET OF SPRINGS	1		
064.14.04-1	320	1308.122.422	SUPPORT	1		
064.14.04-1	330	1308.122.800	SUPPORT	1		
064.43.03-1	10	1308.131.016	GP HOUSING	1		
064.43.40-1	30	1308.131.400	CLOSING COMPONENTS	1		
064.43.81-1	512	1308.131.801	GP HOUSING	1		
064.44.01-1	40	1308.132.003	PLANETARY DRIVE	1		
064.44.40-1	50	1308.132.418	PLANETARY DRIVE	1		
064.44.01-1	60	1308.132.801	PLANETARY DRIVE	1		
064.45.01-1	70	1308.133.002	SYNCHRONIZER	1		
064.45.01-1	80	1308.133.400	SYNCHRONIZER	1		
064.46.03-1	90	1308.134.008	GP SHIFT SYSTEM	1		
064.46.03-1	554	1308.134.401	CONNECTING PARTS	1		

Assembly group overview

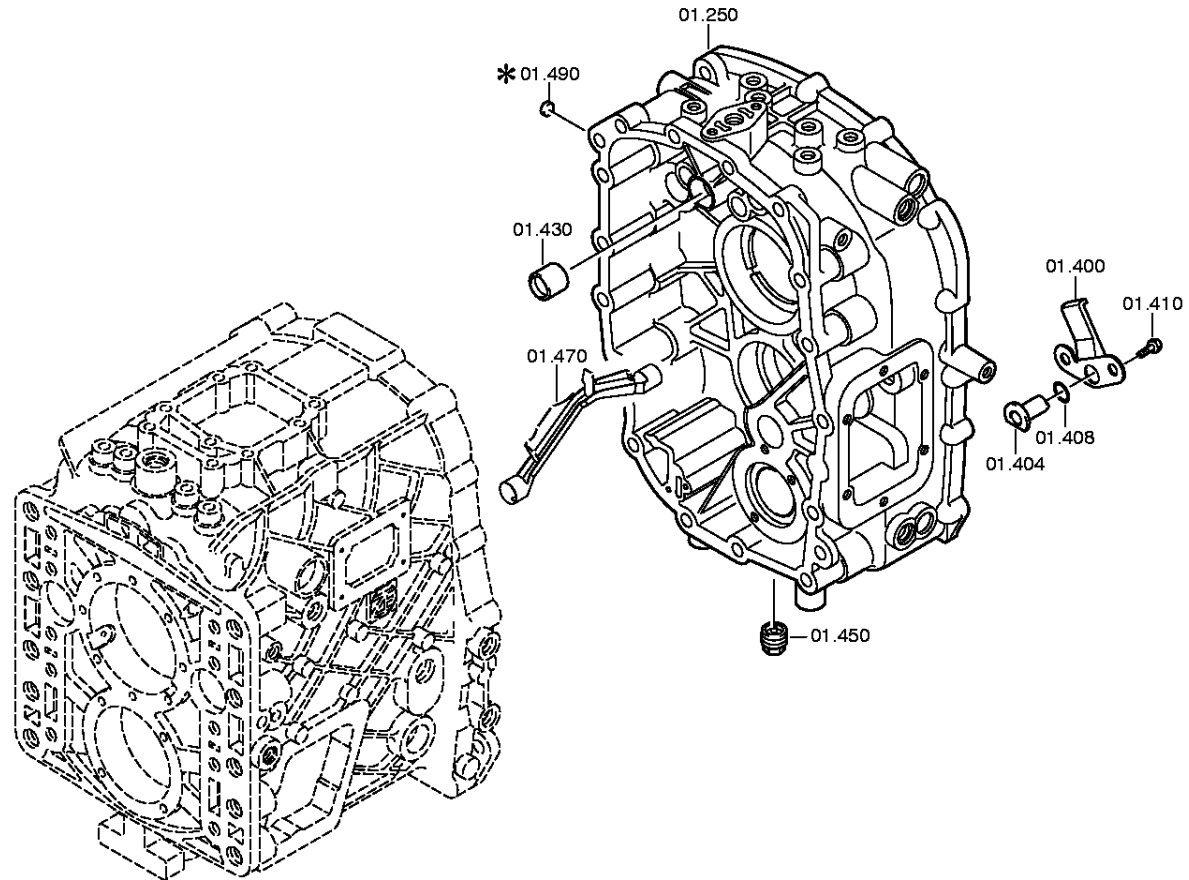
Material number: 1308.050.106

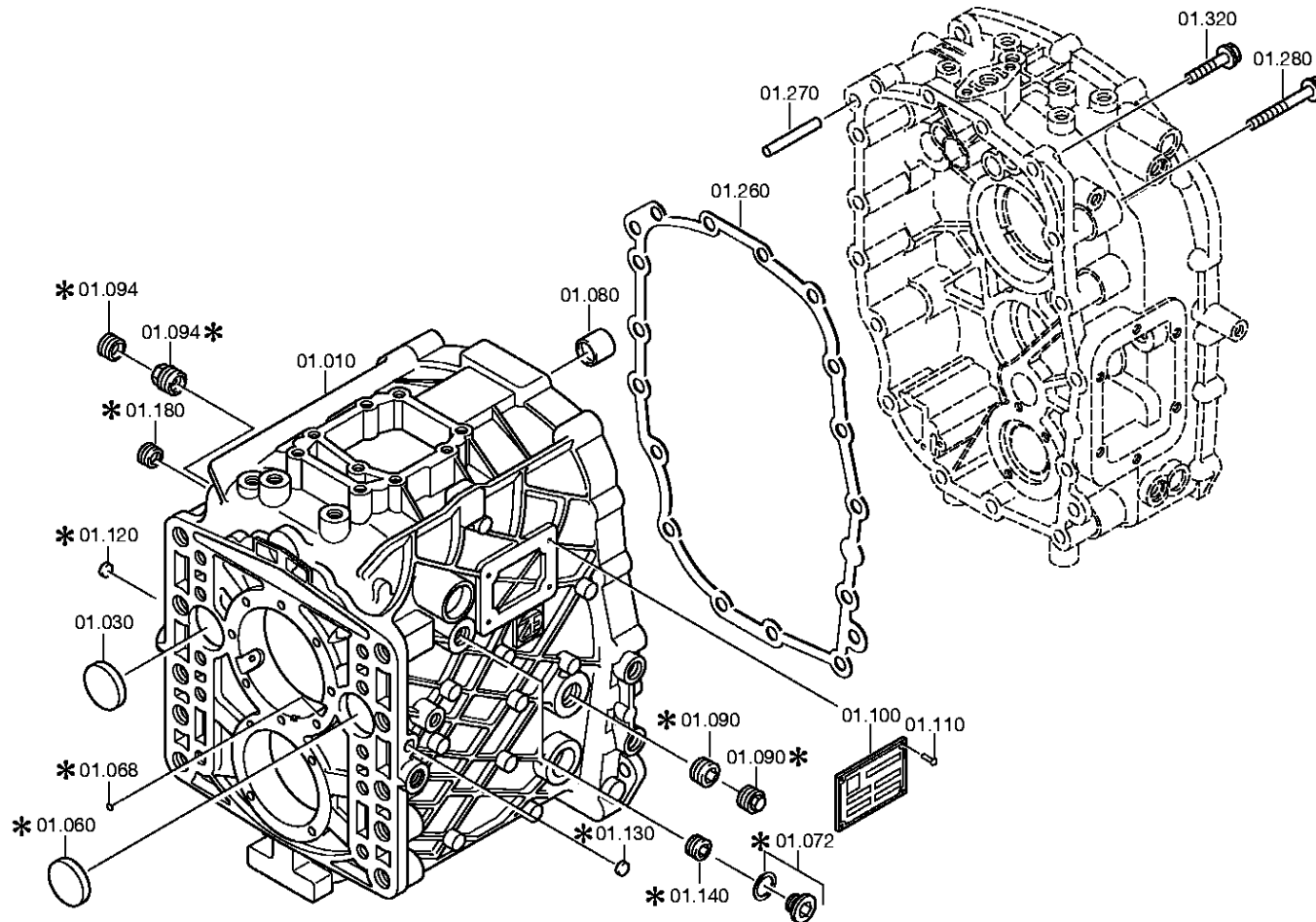
9 S 75 /

Page 2 from 2



Graphics	Pos.	Material number	Name	Quantity	Amend. no.	Techn. Info.
064.47.02-1	190	1308.135.008	SPEEDOMETER COVER	1		
064.47.02-1	194	1308.135.803	SPEEDOMETER COVER	1		
064.57.02-1	390	1308.145.002	RANGE SELECTION	1		





Parts list

Page 1 from 1

Material number: 1308.050.106

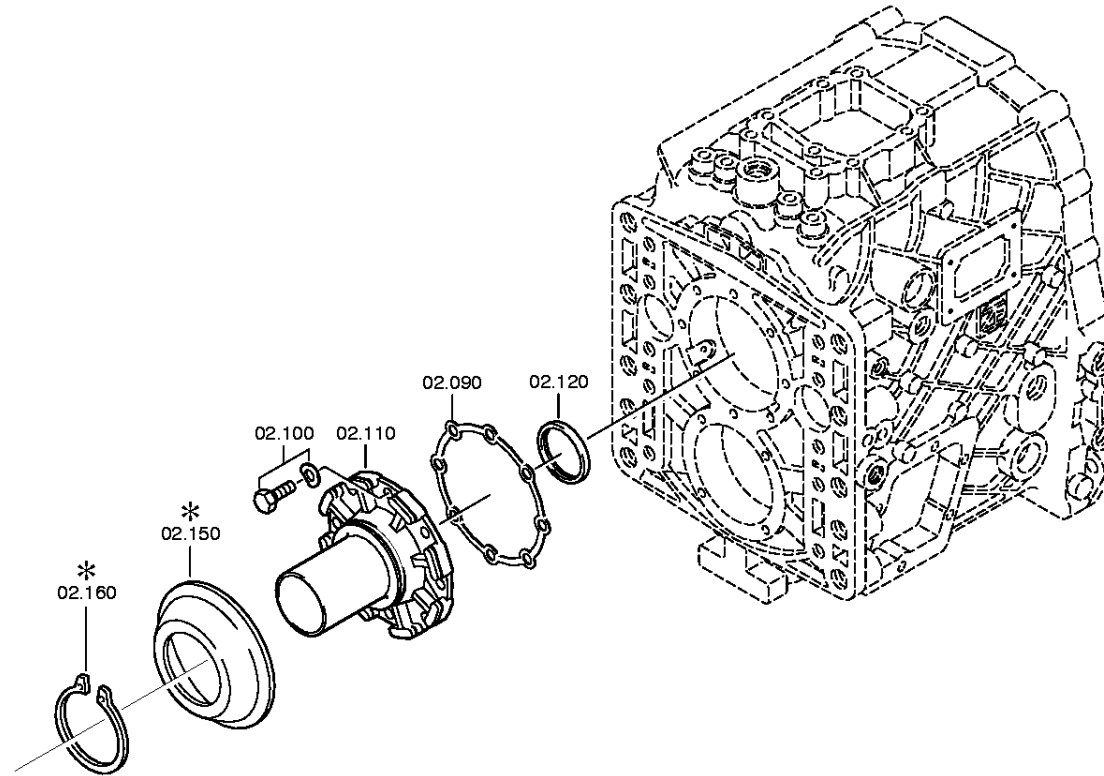
9 S 75 /

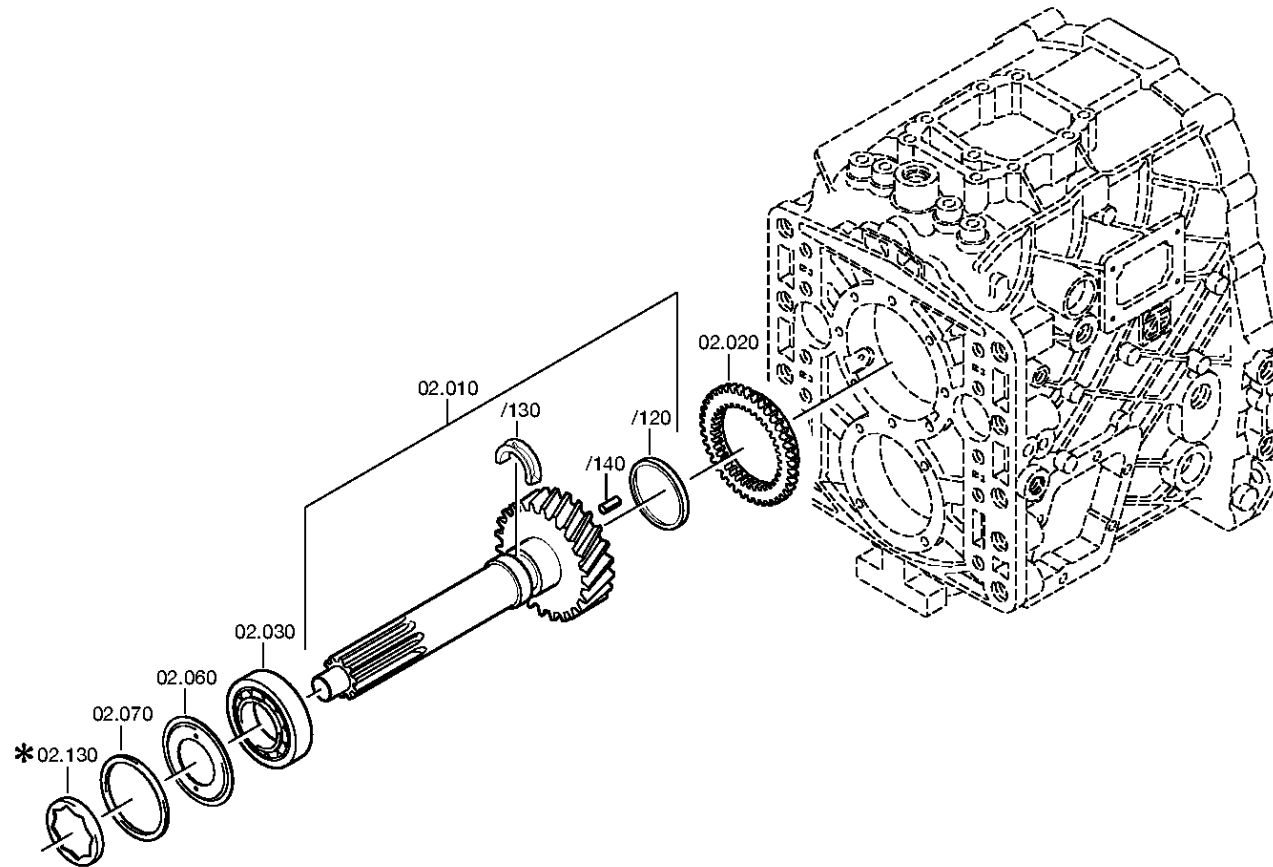
Plant: 064.01.20-1

Material-assembly-group-no: 1308.101.111



Pos.	Material number	Customer material	Name	Quantity	ME	Amend. no.	Techn. Info.	Weight	Rep kit	Alternative material
10	1308.201.105		HOUSING	1				0,000		
30	0750.112.185		PROTECTION CAP	1			40X7	0,000		
80	0750.115.238		BALL SLEEVE	1			18,0X24,0X24,0	0,000		
90	0736.300.224		SCREW PLUG	1		Z00012536012	M24X1,5KEG M24X1,5KEG	0,000		
94	0736.300.221		SCREW PLUG	1		Z00012495112	M24X1,5KEG M24X1,5KEG	0,000		
100	---		TYPE PLATE	1			BOUTHEON	0,000		
---	0730.365.241		TYPE PLATE	1		C01001056E10	EINHEITSSCH. VERDREHSICHER	0,000		
---	0730.365.246		TYPE PLATE	1		C01004699E10	EINHEITSSCH. VERDREHSICHER	0,000		
110	0731.300.027		BLIND RIVET	4		Z00007904810		0,000		
250	1308.201.115		HOUSING	1				0,000		
260	0501.324.719		GASKET	1				0,000		
270	0731.201.620		CYLINDRICAL PIN	2				0,000		
280	0636.024.526		HEXAGON BOLT	10		Z00007055410	M8X70	0,000		
320	0636.011.768		HEXAGON BOLT	6		Z00007172310	M8X45	0,000		
400	1308.201.025		OIL TUBE	1			KPL.	0,000		
404	1308.301.071		PIPE	1				0,000		
408	0634.314.253		O-RING	1			10X3	0,000		
410	0636.100.564		HEXAGON BOLT	2		Z00007287612	M6X12	0,000		
430	0750.115.238		BALL SLEEVE	1			18,0X24,0X24,0	0,000		
450	0736.300.271		SCREW PLUG	1			M24X1,5KEG	0,000		
470	1308.201.032		OIL COLLECTING PLATE	1			KPL. IN 1308 201 022(0)	0,000		





Parts list

Page 1 from 3

Material number: 1308.050.106

9 S 75 /

Plant: 064.02.40-1

Material-assembly-group-no: 1308.102.425



Pos.	Material number	Customer material	Name	Quantity	ME	Amend. no.	Techn. Info.	Weight	Rep kit	Alternative material
10	1308.202.050		INPUT SHAFT	1			KPL.	0,000		
/120	0501.311.146		OIL DAM	1				0,000		
/130	1308.302.107		OIL COLLECTING RING	1				0,000		
/140	0631.329.064		SLOTPIN	1			6X20	0,002		
20	1308.304.078		CLUTCH BODY	1			ENTHALT.IN 1308 304 080(1)	0,000		
30	0750.117.899		TAROLLBEARING	1		Z00010876610		0,000		
60	1308.302.124		OIL DAM	1		Z00010876610		0,000		
70	---		WASHER	1			H= 0,65- 2,10(ABSTUFUNG:0,05MM)	0,000		
---	0730.005.498		WASHER	1			A=2,10 IN 0730 005 479(2)	0,000		
---	0730.005.497		WASHER	1			A=2,05 IN 0730 005 479(2)	0,000		
---	0730.005.496		WASHER	1			A=2,00 IN 0730 005 479(2)	0,000		
---	0730.005.495		WASHER	1			A=1,95 IN 0730 005 479(2)	0,000		
---	0730.005.494		WASHER	1			A=1,90 IN 0730 005 479(2)	0,000		
---	0730.005.493		WASHER	1			A=1,85 IN 0730 005 479(2)	0,000		
---	0730.005.492		WASHER	1			A=1,80 IN 0730 005 479(2)	0,000		
---	0730.005.491		WASHER	1			A=1,75 IN 0730 005 479(2)	0,000		
---	0730.005.490		WASHER	1			A=1,70 IN 0730 005 479(2)	0,000		
---	0730.005.489		WASHER	1			A=1,65 IN 0730 005 479(2)	0,000		
---	0730.005.488		WASHER	1			A=1,60 IN 0730 005 479(2)	0,000		

Parts list

Page 2 from 3

Material number: 1308.050.106

9 S 75 /

Plant: 064.02.40-1

Material-assembly-group-no: 1308.102.425



Pos.	Material number	Customer material	Name	Quantity	ME	Amend. no.	Techn. Info.	Weight	Rep kit	Alternative material
---	0730.005.487		WASHER	1			A=1,55 IN 0730 005 479(2)	0,000		
---	0730.005.486		WASHER	1			A=1,50 IN 0730 005 479(2)	0,000		
---	0730.005.485		WASHER	1			A=1,45 IN 0730 005 479(2)	0,000		
---	0730.005.484		WASHER	1			A=1,40 IN 0730 005 479(2)	0,000		
---	0730.005.483		WASHER	1			A=1,35 IN 0730 005 479(2)	0,000		
---	0730.005.482		WASHER	1			A=1,30 IN 0730 005 479(2)	0,000		
---	0730.005.481		WASHER	1			A=1,25 IN 0730 005 479(2)	0,000		
---	0730.005.480		WASHER	1			A=1,20 IN 0730 005 479(2)	0,000		
---	0730.006.545		WASHER	1			A=1,15 IN 0730 005 479(2)	0,000		
---	0730.006.543		WASHER	1			A=1,10 IN 0730 005 479(2)	0,000		
---	0730.006.541		WASHER	1			A=1,05 IN 0730 005 479(2)	0,000		
---	0730.006.539		WASHER	1			A=1,00 IN 0730 005 479(2)	0,000		
---	0730.006.537		WASHER	1			A=0,95 IN 0730 005 479(2)	0,000		
---	0730.006.535		WASHER	1			A=0,90 IN 0730 005 479(2)	0,000		
---	0730.007.358		WASHER	1			A=0,85 IN 0730 005 479(2)	0,000		
---	0730.007.359		WASHER	1			A=0,80 IN 0730 005 479(2)	0,000		

Parts list

Page 3 from 3

Material number: 1308.050.106

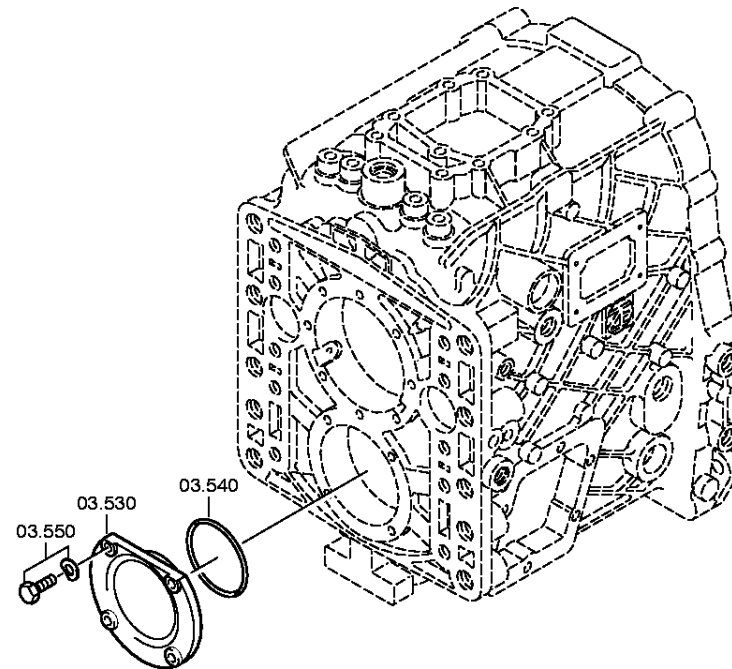
9 S 75 /

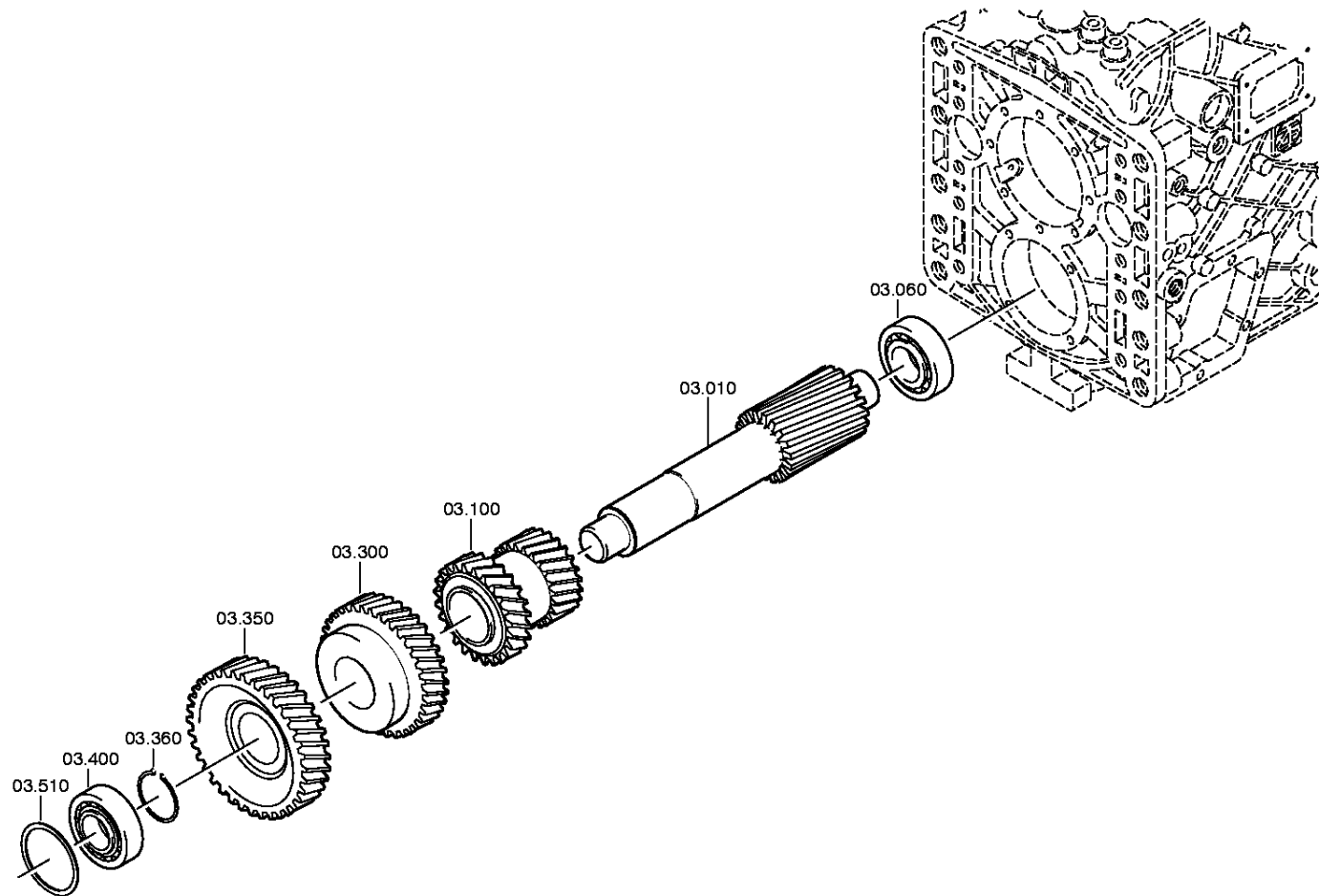
Plant: 064.02.40-1

Material-assembly-group-no: 1308.102.425



Pos.	Material number	Customer material	Name	Quantity	ME	Amend. no.	Techn. Info.	Weight	Rep kit	Alternative material
---	0730.007.360		WASHER	1			A=0,75 IN 0730 005 479(2)	0,000		
---	0730.007.361		WASHER	1			A=0,70 IN 0730 005 479(2)	0,000		
---	0730.007.362		WASHER	1			A=0,65 IN 0730 005 479(2)	0,000		
90	1306.302.026		GASKET	1				0,000		
100	0636.016.401		HEXAGON BOLT	8			M8X25	0,000		
110	1308.302.041		CONNPLATE	1			ENTHALT.IN 1308 302 040(0)	0,000		
120	0750.111.149		SHAFT SEAL	1			48X65X10	0,000		





Parts list

Page 1 from 2

Material number: 1308.050.106

9 S 75 /

Plant: 064.03.80-1

Material-assembly-group-no: 1308.103.804



Pos.	Material number	Customer material	Name	Quantity	ME	Amend. no.	Techn. Info.	Weight	Rep kit	Alternative material
10	1308.303.022		LAYSHAFT	1			Z14	0,000		
60	0750.117.198		TAROLLBEARING	1			39,6X76,2X23,8	0,000		
100	1308.303.021		DOUBLE GEAR	1				0,000		
300	1308.303.027		HELICAL GEAR	1			3G/Z32 IN 1308 303 005(1)	0,000		
350	1308.303.023		HELICAL GEAR	1			KON/Z37 IN 1308 303 002(1)	0,000		
360	---		RETAINING RING	1			S= 1,70- 2,50(ABSTUFUNG:0,10MM)	0,000		
---	0730.501.493		RETAINING RING	1			A=2,50 IN 0730 501 488(2)	0,000		
---	0730.501.492		RETAINING RING	1			A=2,40 IN 0730 501 488(2)	0,000		
---	0730.501.491		RETAINING RING	1			A=2,30 IN 0730 501 488(2)	0,000		
---	0730.501.490		RETAINING RING	1			A=2,20 IN 0730 501 488(2)	0,000		
---	0730.501.489		RETAINING RING	1			A=2,10 IN 0730 501 488(2)	0,000		
---	0630.501.037		RETAINING RING	1			54X2	0,000		
---	0630.501.220		RETAINING RING	1			54X1,9	0,000		
---	0630.501.219		RETAINING RING	1			54X1,8	10		
---	0630.501.380		RETAINING RING	1			54X1,7	0,000		
400	0750.120.097		TAROLLBEARING	1		Z00007255210	39,688X79,975X29,370	0,000		
510	---		WASHER	1			H= 1,30- 2,40(ABSTUFUNG:0,05MM)	0,000		
---	0730.108.414		WASHER	1			A=2,40 IN 0730 104 301(2)	0,000		
---	0730.107.862		WASHER	1			A=2,35	0,000		
---	0730.107.861		WASHER	1				0,000		
---	0730.107.860		WASHER	1				0,000		
---	0730.104.302		WASHER	1				0,020		

Parts list

Page 2 from 2

Material number: 1308.050.106

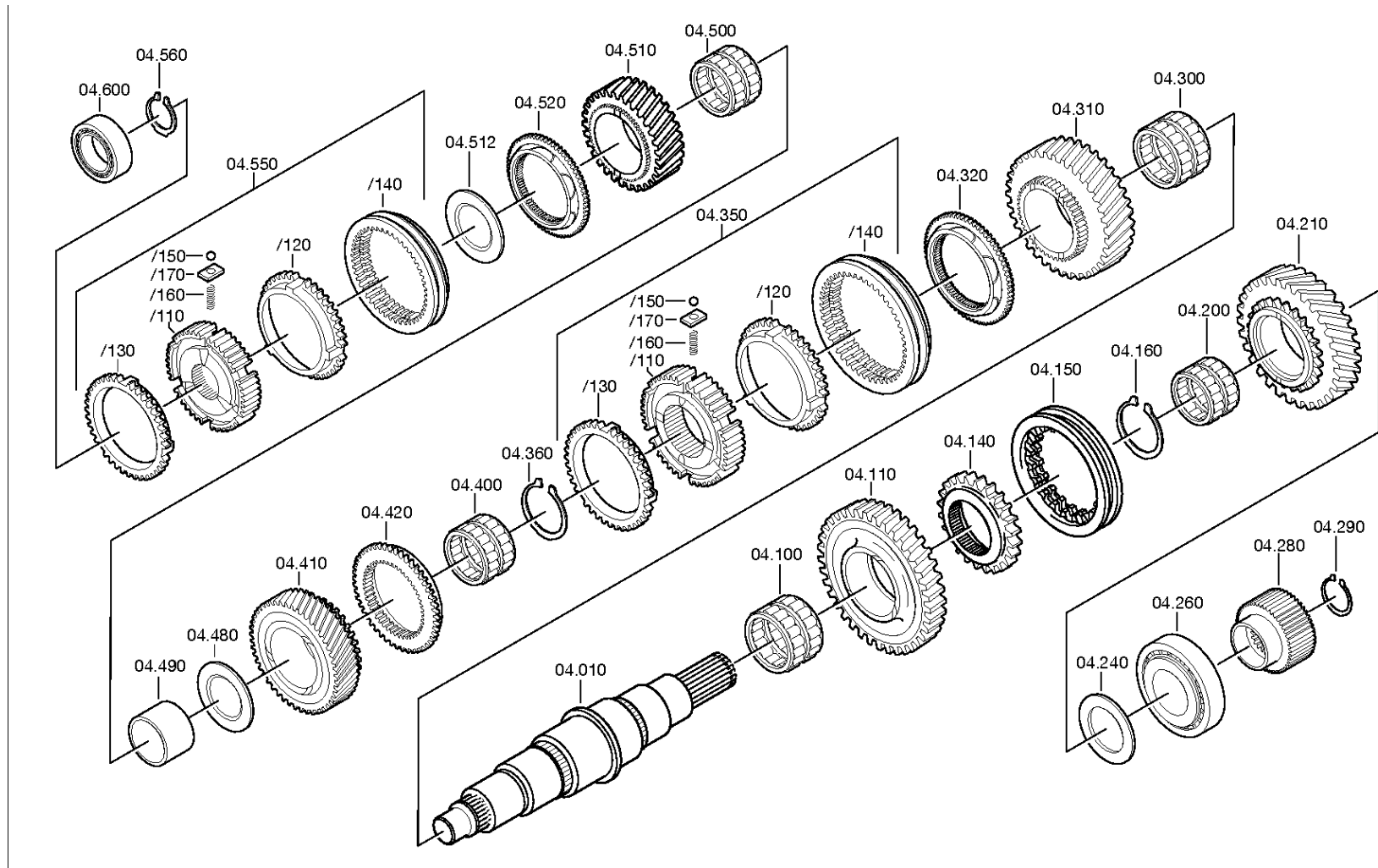
9 S 75 /

Plant: 064.03.80-1

Material-assembly-group-no: 1308.103.804



Pos.	Material number	Customer material	Name	Quantity	ME	Amend. no.	Techn. Info.	Weight	Rep kit	Alternative material
---	0730.107.803		WASHER	1				20		
---	0730.107.802		WASHER	1			A=2,10	20		
---	0730.107.801		WASHER	1			A=2,05	20		
---	0730.104.303		WASHER	1				20		
---	0730.107.800		WASHER	1			A=1,95	20		
---	0730.107.799		WASHER	1			A=1,90	20		
---	0730.107.798		WASHER	1				20		
---	0730.106.656		WASHER	1				15		
---	0730.104.304		WASHER	1				20		
---	0730.104.305		WASHER	1				0,000		
---	0730.104.306		WASHER	1				0,000		
---	0730.104.307		WASHER	1				0,000		
---	0730.104.308		WASHER	1				20		
---	0730.104.309		WASHER	1			A=1,50 IN 0730 104 301(2)	0,000		
---	0730.105.290		WASHER	1			A=1,45 IN 0730 104 301(2)	0,000		
---	0730.105.291		WASHER	1			A=1,40 IN 0730 104 301(2)	0,000		
---	0730.105.292		WASHER	1			A=1,35 IN 0730 104 301(2)	0,000		
---	0730.106.655		WASHER	1			A=1,30 IN 0730 104 301(2)	0,000		
530	1308.301.175		COVER	1				0,000		
540	0634.303.121		O-RING	1			75X2,5	0,000		
550	0636.100.641		HEXAGON BOLT	4		Z00007288010	M8X28	0,000		



Parts list

Page 1 from 5

Material number: 1308.050.106

9 S 75 /

Plant: 064.04.01-1

Material-assembly-group-no: 1308.104.801



Pos.	Material number	Customer material	Name	Quantity	ME	Amend. no.	Techn. Info.	Weight	Rep kit	Alternative material
10	1308.304.053		MAIN SHAFT	1				0,000		
100	0750.115.994		NEEDLE CAGE	1			67,0X75,0X37,0	0,000		
110	1308.304.086		HELICAL GEAR	1			Z37	0,000		
140	1308.304.051		SLEEVE CARRIER	1				0,000		
150	1308.304.087		SLIDING SLEEVE	1			RG-KLAUE	0,000		
160	---		RETAINING RING	1			S= 2,45- 2,80(ABSTUFUNG:0,05MM)	0,000		
---	0730.501.418		RETAINING RING	1			A=2,80 IN 0730 501 404(2)	0,000		
---	0730.501.417		RETAINING RING	1			A=2,75 IN 0730 501 404(2)	0,000		
---	0730.501.413		RETAINING RING	1			A=2,70 IN 0730 501 404(2)	0,000		
---	0730.501.412		RETAINING RING	1			A=2,65 IN 0730 501 404(2)	0,000		
---	0730.501.411		RETAINING RING	1			A=2,60 IN 0730 501 404(2)	0,000		
---	0730.501.410		RETAINING RING	1			A=2,55 IN 0730 501 404(2)	0,000		
---	0730.501.409		RETAINING RING	1			A=2,50 IN 0730 501 404(2)	0,000		
---	0730.501.408		RETAINING RING	1			A=2,45 IN 0730 501 404(2)	0,000		
200	0750.115.533		NEEDLE CAGE	1		C01005425A10	60,0X68,0X31,3	0,000		
210	1308.304.052		HELICAL GEAR	1			RG/Z33	0,000		
240	0730.106.496		WASHER	1			A=4,00	0,000		
260	0750.120.167		TAROLLBEARING	1			44,4X95,2X28,5	0,000		
280	1308.304.059		SUN GEAR	1			Z30 IN 1308 304 058(1)	0,000		
290	---		RETAINING RING	1			S= 2,40- 3,50(ABSTUFUNG:0,05MM)	0,000		
---	0730.501.499		RETAINING RING	1			A=3,50 IN 0730 501 288(3)	0,000		

Parts list

Page 2 from 5

Material number: 1308.050.106

9 S 75 /

Plant: 064.04.01-1

Material-assembly-group-no: 1308.104.801



Pos.	Material number	Customer material	Name	Quantity	ME	Amend. no.	Techn. Info.	Weight	Rep kit	Alternative material
---	0730.501.498		RETAINING RING	1			A=3,40 IN 0730 501 288(3)	0,000		
---	0730.501.497		RETAINING RING	1			A=3,30 IN 0730 501 288(3)	0,000		
---	0730.501.496		RETAINING RING	1			A=3,20 IN 0730 501 288(3)	0,000		
---	0730.501.495		RETAINING RING	1			A=3,10 IN 0730 501 288(3)	0,000		
---	0630.531.058		RETAINING RING	1			45X3	0,000		
---	0730.501.297		RETAINING RING	1			A=2,90 IN 0730 501 288(3)	0,000		
---	0730.501.296		RETAINING RING	1			A=2,85 IN 0730 501 288(3)	0,000		
---	0730.501.295		RETAINING RING	1			A=2,80 IN 0730 501 288(3)	0,000		
---	0730.501.294		RETAINING RING	1			A=2,75 IN 0730 501 288(3)	0,000		
---	0730.501.293		RETAINING RING	1			A=2,70 IN 0730 501 288(3)	0,000		
---	0730.501.292		RETAINING RING	1			A=2,65 IN 0730 501 288(3)	0,000		
---	0730.501.291		RETAINING RING	1			A=2,60 IN 0730 501 288(3)	0,000		
---	0730.501.290		RETAINING RING	1			A=2,55 IN 0730 501 288(3)	0,000		
---	0730.501.289		RETAINING RING	1			A=2,50 IN 0730 501 288(3)	0,000		
---	0630.531.293		RETAINING RING	1			45X2,4	10		
300	0750.115.991		NEEDLE CAGE	1		Z00008189911	WTB	0,000		
310	1308.304.057		HELICAL GEAR	1			1G/Z34 IN 1308 304 056(1)	0,000		

Parts list

Page 3 from 5

Material number: 1308.050.106

9 S 75 /

Plant: 064.04.01-1

Material-assembly-group-no: 1308.104.801



Pos.	Material number	Customer material	Name	Quantity	ME	Amend. no.	Techn. Info.	Weight	Rep kit	Alternative material
320	1308.304.077		CLUTCH BODY	1			ENTHALT.IN 1308 304 079(1)	0,000		
350	1308.204.026		SYNCHRONIZER	1			KPL.1+2G	0,000		
/110	1308.304.110		SYNCHROBODY	1		C01000255F10	1/2G ZF-B115I	0,000		
/120	1308.304.096		SYNCHRO RING	1		C01000045B10		0,000		
/130	1308.304.096		SYNCHRO RING	1		C01000045B10		0,000		
/140	1308.304.091		SLIDING SLEEVE	1			ENTHALT.IN 1308 304 099(0)	0,000		
/150	0635.460.010		BALL	3			6	1		
/160	0732.041.571		COMPRSPRING	3				0,000		
/170	1307.304.156		PRESSURE PIECE	3		C01007317F10	ENTHALT.IN 1307 304 155(1)	0,000		
360	---		RETAINING RING	1			S= 2,45- 2,80(ABSTUFUNG:0,05MM)	0,000		
---	0730.501.418		RETAINING RING	1			A=2,80 IN 0730 501 404(2)	0,000		
---	0730.501.417		RETAINING RING	1			A=2,75 IN 0730 501 404(2)	0,000		
---	0730.501.413		RETAINING RING	1			A=2,70 IN 0730 501 404(2)	0,000		
---	0730.501.412		RETAINING RING	1			A=2,65 IN 0730 501 404(2)	0,000		
---	0730.501.411		RETAINING RING	1			A=2,60 IN 0730 501 404(2)	0,000		
---	0730.501.410		RETAINING RING	1			A=2,55 IN 0730 501 404(2)	0,000		
---	0730.501.409		RETAINING RING	1			A=2,50 IN 0730 501 404(2)	0,000		
---	0730.501.408		RETAINING RING	1			A=2,45 IN 0730 501 404(2)	0,000		
400	0750.115.995		NEEDLE CAGE	1			60,0X68,0X41,6	0,000		
410	1308.304.054		HELICAL GEAR	1			2G/Z30	0,000		

Parts list

Page 4 from 5

Material number: 1308.050.106

9 S 75 /

Plant: 064.04.01-1

Material-assembly-group-no: 1308.104.801



Pos.	Material number	Customer material	Name	Quantity	ME	Amend. no.	Techn. Info.	Weight	Rep kit	Alternative material
420	1308.304.077		CLUTCH BODY	1			ENTHALT.IN 1308 304 079(1)	0,000		
480	0730.108.172		WASHER	1			A=4,15 IN 0730 106 560(1)	0,000		
490	0730.162.428		BUSH	1			A=42,30 IN 0730 161 688(2)	0,000		
500	0750.115.995		NEEDLE CAGE	1			60,0X68,0X41,6	0,000		
510	1308.304.064		HELICAL GEAR	1			3G/Z30 IN 1308 304 046(1)	0,000		
512	0730.108.172		WASHER	1			A=4,15 IN 0730 106 560(1)	0,000		
520	1308.304.078		CLUTCH BODY	1			ENTHALT.IN 1308 304 080(1)	0,000		
550	1308.204.024		SYNCHRONIZER	1			KPL.3+4G	0,000		
/110	1308.304.111		SYNCHROBODY	1		C01000255F10	3/4G ZF-B100I	0,000		
/120	1308.304.097		SYNCHRO RING	1		C01000046B10	ENTHALT.IN 1307 304 645(1)	0,000		
/130	1308.304.097		SYNCHRO RING	1		C01000046B10	ENTHALT.IN 1307 304 645(1)	0,000		
/140	1308.304.090		SLIDING SLEEVE	1			ZF-B100II 3.+ 4.GANG	0,000		
/150	0635.460.010		BALL	3			6	1		
/160	0732.041.571		COMPRSPRING	3				0,000		
/170	1307.304.156		PRESSURE PIECE	3		C01007317F10	ENTHALT.IN 1307 304 155(1)	0,000		
560	---		RETAINING RING	1			S= 2,40- 3,10(ABSTUFUNG:0,05MM)	0,000		
---	0730.501.502		RETAINING RING	1			A=3,10 IN 0730 501 394(2)	0,000		
---	0730.501.501		RETAINING RING	1			A=3,00 IN 0730 501 394(2)	0,000		
---	0730.501.500		RETAINING RING	1			A=2,90 IN 0730 501 394(2)	0,000		

Parts list

Page 5 from 5

Material number: 1308.050.106

9 S 75 /

Plant: 064.04.01-1

Material-assembly-group-no: 1308.104.801



Pos.	Material number	Customer material	Name	Quantity	ME	Amend. no.	Techn. Info.	Weight	Rep kit	Alternative material
---	0730.501.416		RETAINING RING	1			A=2,80 IN 0730 501 394(2)	0,000		
---	0730.501.415		RETAINING RING	1			A=2,75 IN 0730 501 394(2)	0,000		
---	0730.501.403		RETAINING RING	1			A=2,70 IN 0730 501 394(2)	0,000		
---	0730.501.402		RETAINING RING	1			A=2,65 IN 0730 501 394(2)	0,000		
---	0730.501.401		RETAINING RING	1			A=2,60 IN 0730 501 394(2)	0,000		
---	0730.501.400		RETAINING RING	1			A=2,55 IN 0730 501 394(2)	0,000		
---	0730.501.399		RETAINING RING	1			A=2,50 IN 0730 501 394(2)	0,000		
---	0730.501.398		RETAINING RING	1			A=2,45 IN 0730 501 394(2)	0,000		
---	0730.501.397		RETAINING RING	1			A=2,40 IN 0730 501 394(2)	0,000		
600	---		TAROLLBEARING	1				0,420		
---	1307.203.019		TAROLLBEARING	1				0,420		
---	1307.203.010		TAROLLBEARING	1				0,000		
---	1307.203.009		TAROLLBEARING	1				0,000		

Plant

Page 1 from 1

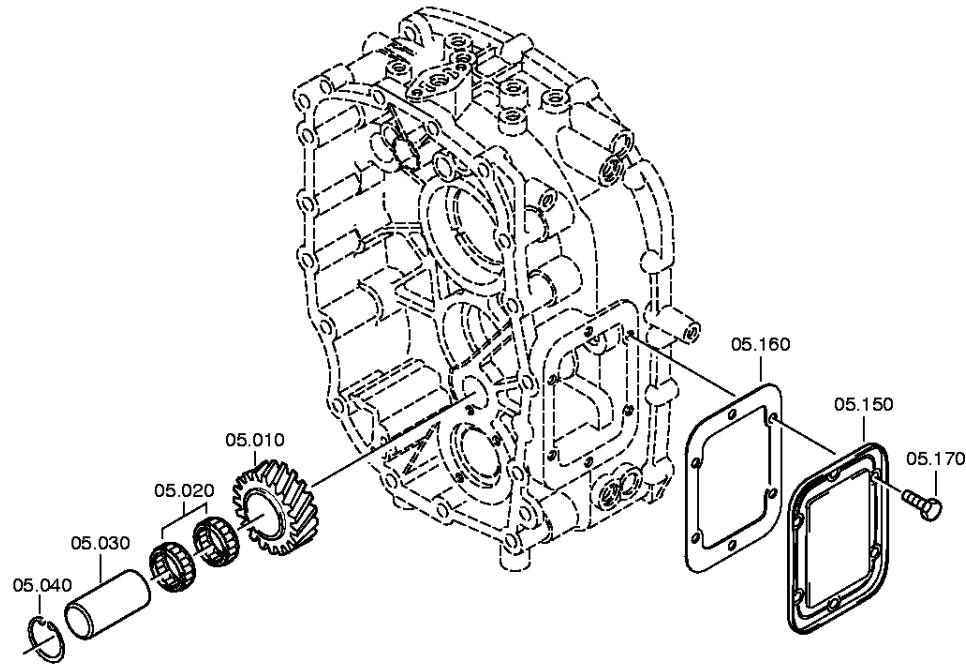
Material number: 1308.050.106

Plant: 064.05.02-1

Material-assembly-group-no: 1308.105.008

9 S 75 /

RETURN



Parts list

Page 1 from 1

Material number: 1308.050.106

9 S 75 /

Plant: 064.05.02-1

Material-assembly-group-no: 1308.105.008



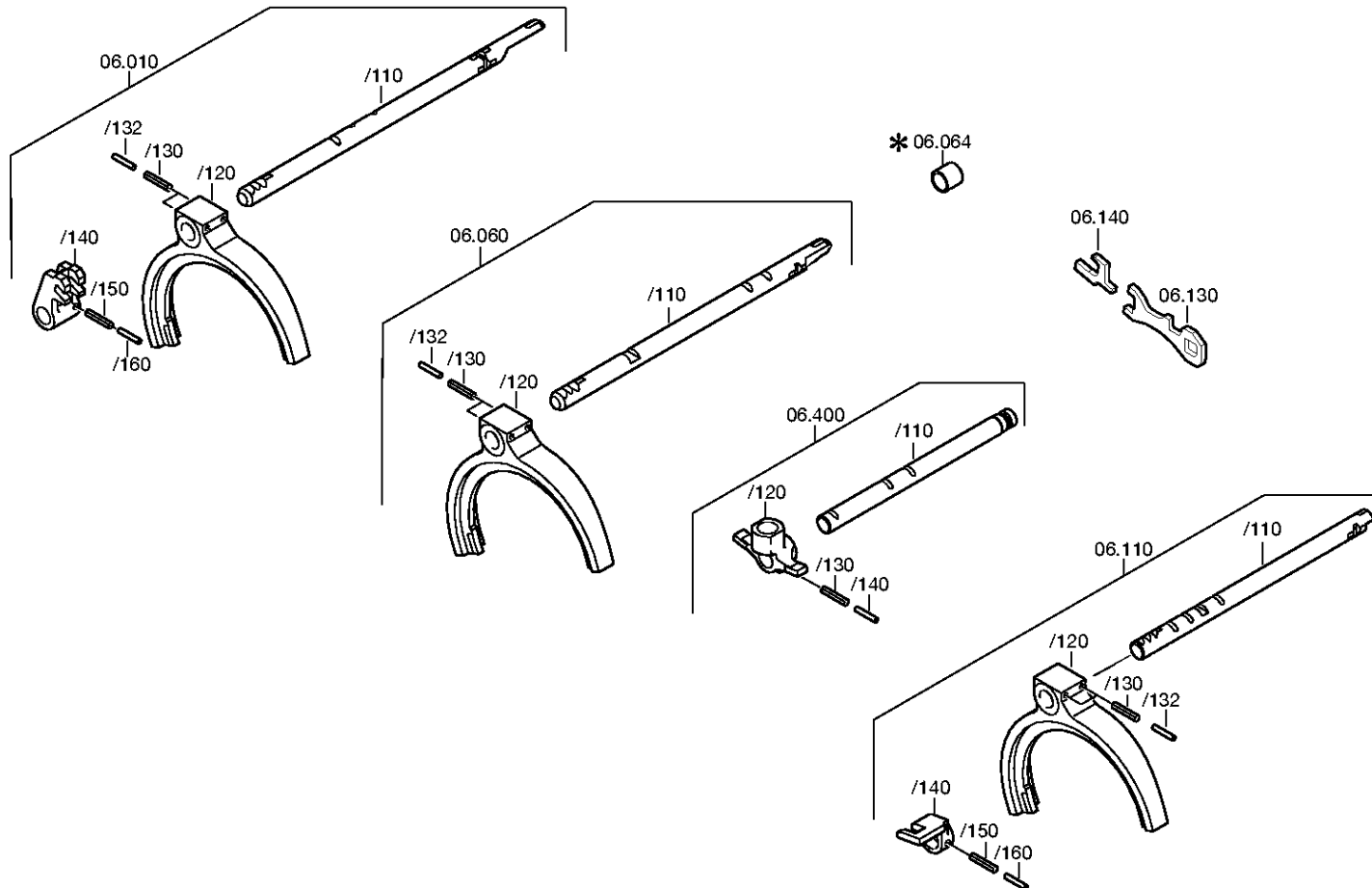
Pos.	Material number	Customer material	Name	Quantity	ME	Amend. no.	Techn. Info.	Weight	Rep kit	Alternative material
10	1308.305.001		REVERSE IDLER GEAR	1			Z20 IN 1304 305 029(1)	0,000		
20	0750.115.974		ROLLER CAGE	2		C01004855F10	40,0X60,0X26,0	0,000		
/10	0735.358.192		ROLLER CAGE	1			40,0X60,0X26,0 FA.INA	0,000		
/20	0735.358.338		NEEDLE SLEEVE	1			40,0X60,0X26,0 FA.NRB	0,000		
30	1304.305.030		PIN	1				0,000		
40	0630.502.022		RETAINING RING	1			40X1,75	4,800		
150	1324.301.165		COVER	1		Z00009633112		0,000		
160	1290.301.140		GASKET	1			ENTHALT.IN 1290 301 071(1)	0,000		
170	0636.100.404		HEXAGON BOLT	6		Z00009176710	M10X22	0,000		

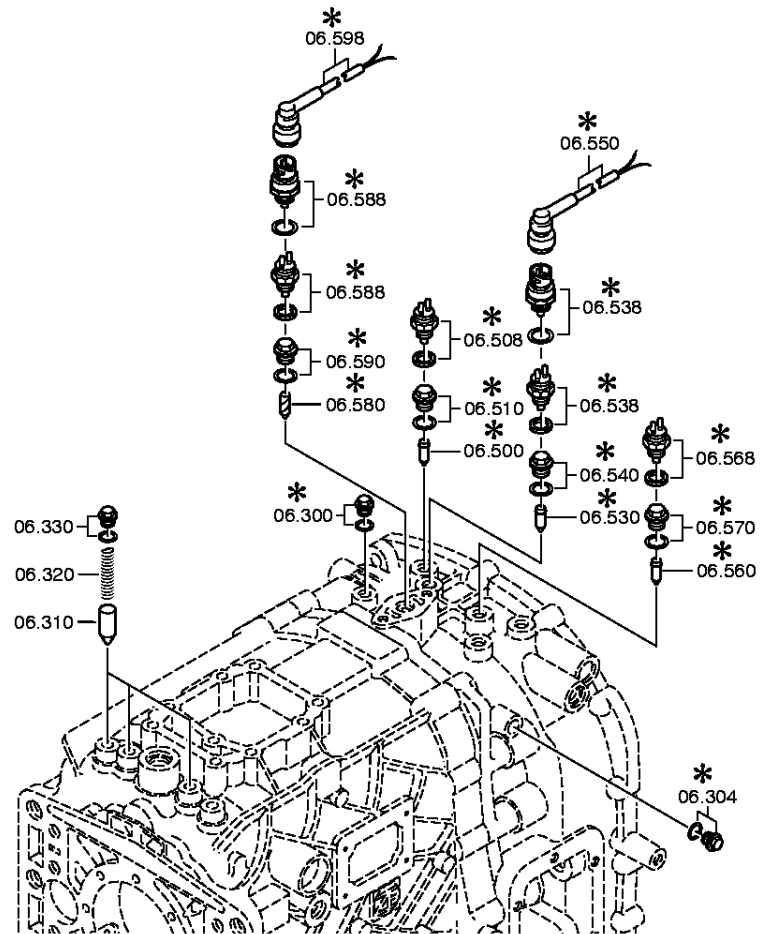
Plant

Page 1 from 2

Material number: 1308.050.106
Plant: 064.06.10-1
GEAR SHIFT SYSTEM

9 S 75 /
GEAR SHIFT SYSTEM





Parts list

Page 1 from 2

Material number: 1308.050.106

9 S 75 /

Plant: 064.06.10-1

Material-assembly-group-no: 1308.106.108



Pos.	Material number	Customer material	Name	Quantity	ME	Amend. no.	Techn. Info.	Weight	Rep kit	Alternative material
10	1308.206.061		GEAR SHIFT RAIL	1			KPL.	0,000		
/110	1308.306.072		GEAR SHIFT RAIL	1			1/2G	0,000		
/120	1308.306.037		GEAR SHIFT FORK	1			1+2G	0,000		
/130	0631.329.069		SLOTPIN	2			6X30	4		
/132	0631.329.028		SLOTPIN	2			3,5X30	0,000		
/140	1308.306.024		DRIVER	1			WB I	0,000		
/150	0631.329.069		SLOTPIN	1			6X30	4		
/160	0631.329.028		SLOTPIN	1			3,5X30	0,000		
60	1308.206.060		GEAR SHIFT RAIL	1			KPL.	0,000		
/110	1308.306.071		GEAR SHIFT RAIL	1			RG	0,000		
/120	1308.306.067		GEAR SHIFT FORK	1				0,000		
/130	0631.329.069		SLOTPIN	2			6X30	4		
/132	0631.329.028		SLOTPIN	2			3,5X30	0,000		
110	1308.206.054		GEAR SHIFT RAIL	1			KPL.	0,000		
/110	1308.306.070		GEAR SHIFT RAIL	1			3/4G	0,000		
/120	1308.306.081		GEAR SHIFT FORK	1			3/4G	0,000		
/130	0631.329.069		SLOTPIN	2			6X30	4		
/132	0631.329.028		SLOTPIN	2			3,5X30	0,000		
/140	1308.306.032		DRIVER	1			3/4 GANG	0,000		
/150	0631.329.069		SLOTPIN	1			6X30	4		
/160	0631.329.028		SLOTPIN	1			3,5X30	0,000		
130	1308.306.068		LOCKING SHEET	1				0,000		
140	1308.306.069		LOCKING SHEET	1				0,000		
310	1307.306.170		DETENT PIN	3				0,000		
320	0732.041.946		COMPRSPRING	3				0,000		
330	---		SCREW PLUG	3		Z00010172312	25N.M*DICHTRING M12X1,5	0,000		
---	0636.100.299		SCREW PLUG	3		Z00010172316	M12X1,5	0,000		
---	0634.801.027		SEALING RING	3		Z00010172316	12X16	0,000		
400	1308.206.072		GEAR SHIFT SHAFT	1			KPL.	0,000		

Parts list

Page 2 from 2

Material number: 1308.050.106

9 S 75 /

Plant: 064.06.10-1

Material-assembly-group-no: 1308.106.108



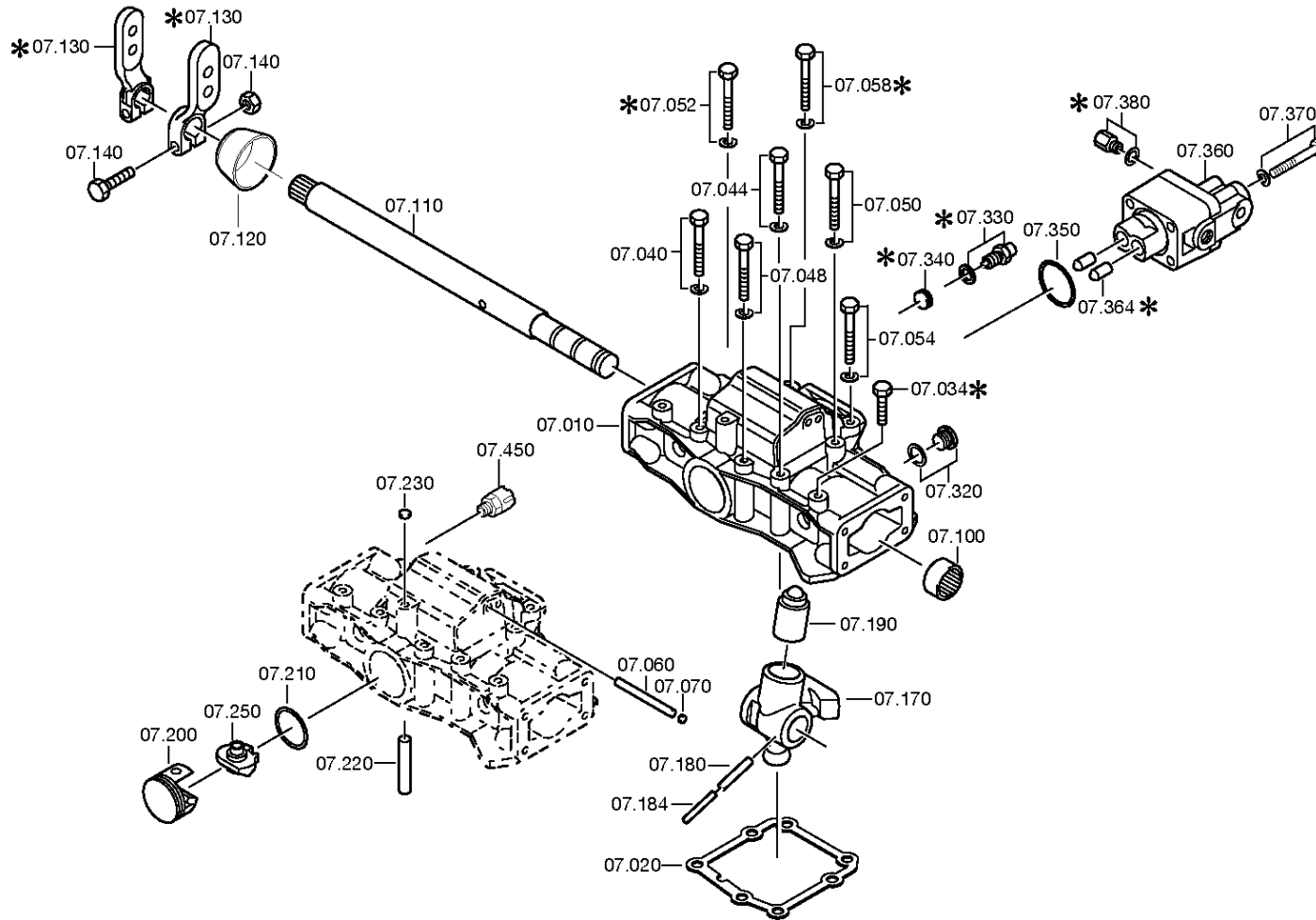
Pos.	Material number	Customer material	Name	Quantity	ME	Amend. no.	Techn. Info.	Weight	Rep kit	Alternative material
/110	1308.306.096		GEAR SHIFT SHAFT	1			ENTHALT.IN 1306 306 022(1)	0,000		
/120	1308.306.073		GSHIFT FINGER	1			H-H WBI	0,000		
/130	0631.329.069		SLOTPIN	1			6X30	4		
/140	0631.329.028		SLOTPIN	1			3,5X30	0,000		
530	1308.206.041		PIN	1			KPL.	0,000		
538	---		SWITCH	1			SCHL*45N.M* DICHTRING	0,000		
---	0501.311.807		SWITCH	1				61,100		
---	0634.801.062		SEALING RING	1			18X24	0,001		
580	1308.206.041		PIN	1			KPL.	0,000		
588	---		SWITCH	1			OEFF*45N.M* DICHTRING	0,000		
---	0501.216.472		SWITCH	1				0,088		
---	0634.801.062		SEALING RING	1			18X24	0,001		

Plant

Page 1 from 1

Material number: 1308.050.106
Plant: 064.07.14-1
GEAR SHIFT HOUSING

9 S 75 /
GEAR SHIFT HOUSING



Parts list

Page 1 from 2

Material number: 1308.050.106

9 S 75 /

Plant: 064.07.14-1

Material-assembly-group-no: 1308.107.817



Pos.	Material number	Customer material	Name	Quantity	ME	Amend. no.	Techn. Info.	Weight	Rep kit	Alternative material
10	1308.307.141		GEAR SHIFT HOUSING	1			ENTHALT.IN 1308 307 140(0)	0,000		
20	1308.307.148		GASKET	1				0,000		
34	0636.100.796		HEXAGON BOLT	1		Z00007891111	M8X20	0,000		
40	0736.300.137		HEXAGON BOLT	1		Z00009195410	M8X80 M8X80	0,000		
44	---		HEXAGON BOLT	1		Z00007054810	M8X85	0,000		
---	0636.011.782		HEXAGON BOLT	1		Z00007054812	M8X85	0,000		
---	0630.100.295		WASHER	1		Z00007158414		0,000		
48	0736.300.137		HEXAGON BOLT	1		Z00009195410	M8X80 M8X80	0,000		
50	0736.300.137		HEXAGON BOLT	2		Z00009195410	M8X80 M8X80	0,000		
54	0736.300.137		HEXAGON BOLT	2		Z00009195410	M8X80 M8X80	0,000		
60	0731.201.601		PIN	2			ENTHALT.IN 0731 201 600(3)	0,000		
70	0635.460.034		BALL	2			6,35	0,000		
100	0635.303.053		NEEDLE SLEEVE	1			25X32X20	120		
110	1308.307.082		GEAR SHIFT SHAFT	1			ENTHALT.IN 1308 307 070(1)	0,000		
120	1324.307.268		PROTECTING CAP	1		Z00009174312		0,000		
130	1304.307.487		GEAR SHIFT LEVER	1		Z00009149311	U536	0,000		
140	---		BOLT+NUT	1		Z00007891713	M10X40	0,000		
---	0636.100.789		HEXAGON BOLT	1		Z00007891711	M10X40	0,000		
---	0637.100.419		HEXAGON NUT	1		Z00007892710	M10	0,000		
170	1308.307.195		GSHIFT FINGER	1		C01008511E10	WB I	0,000		
180	0631.329.085		SLOTPIN	1			8X36	0,010		
184	0631.329.056		SLOTPIN	1			5X36	0,003		
190	0501.206.818		GSHIFT DETENT	1			KPL. IN 0501 207 250(2)	0,000		
200	1315.307.018		COVER	1				0,000		
210	0634.314.021		O-RING	1			36,2X3	0,000		
220	0731.201.562		PIN	1				0,000		
230	---		SEALING CAP	1		C01002936B10		0,000		
---	0630.100.371		SEALING CAP	1		Z00007286611		0,000		

Parts list

Page 2 from 2

Material number: 1308.050.106

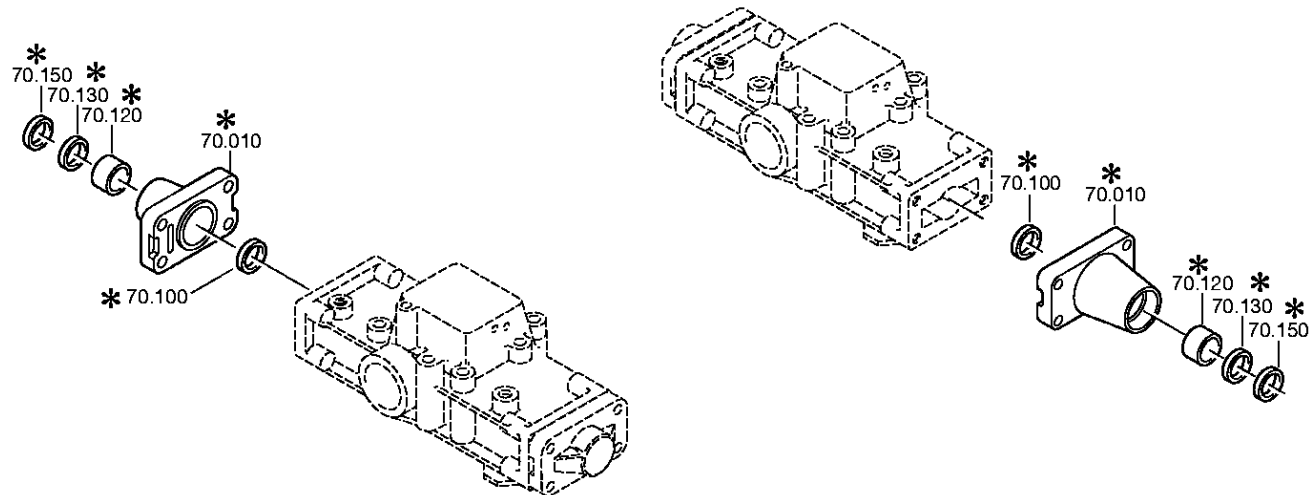
9 S 75 /

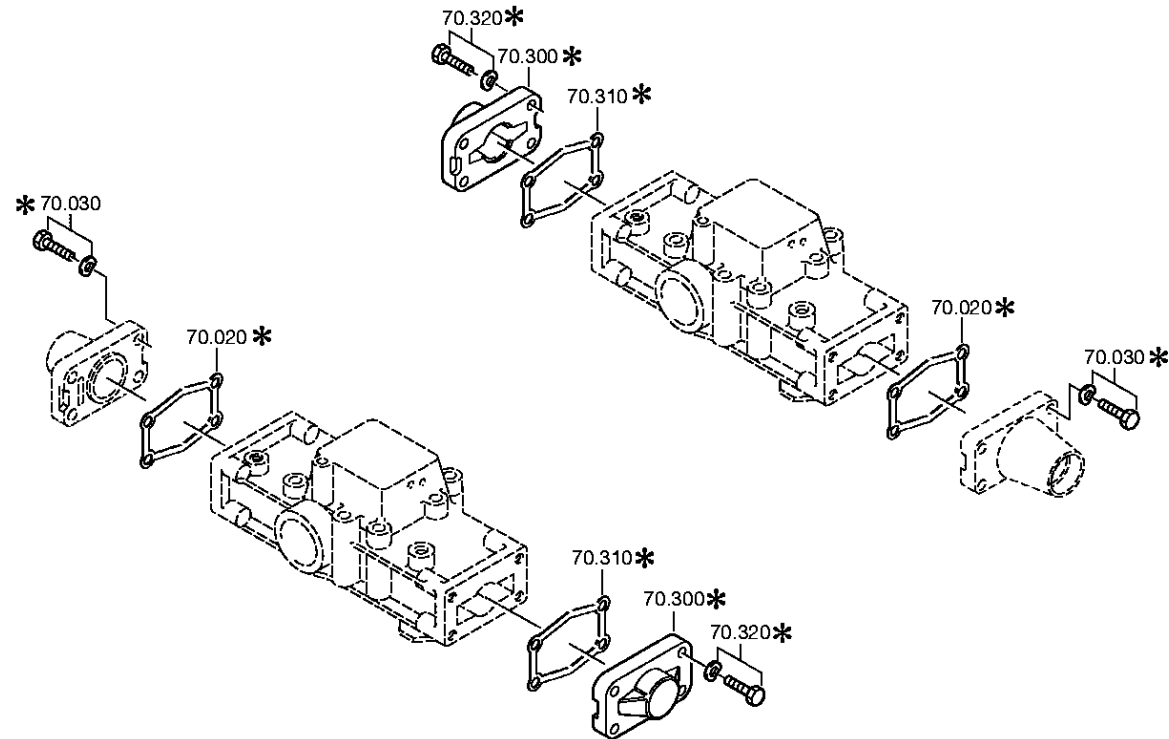
Plant: 064.07.14-1

Material-assembly-group-no: 1308.107.817



Pos.	Material number	Customer material	Name	Quantity	ME	Amend. no.	Techn. Info.	Weight	Rep kit	Alternative material
250	1308.307.135		DETENT PART	1				0,000		
320	---		SCREW PLUG	1		Z00010111711	35 NM*DICHTRING	0,000		
---	0636.100.794		SCREW PLUG	1		Z00010111713	M16X1,5	0,000		
---	0634.801.044		SEALING RING	1		Z00010111713	16X20	0,010		
330	---		DETENT PLUNGER	1		C01006305E10	120N*50N.M*90GRAD	0,000		
---	1324.207.015		DETENT PLUNGER	1		Z00009029610	KPL. 120 N	0,000		
---	0730.008.604		SEALING RING	1				0,000		
350	0634.313.505		O-RING	1			42X3	0,000		
360	6038.202.043		CUT-OFF VALVE	1		C01002429C10	KPL.H-H* ZULUFTDROSSEL 1,55	0,000		
364	0501.209.188		BALL ROLLER	2			KPL.	0,000		
370	---		HEXAGON BOLT	4			M8X65	0,000		
---	0636.100.519		HEXAGON BOLT	4		Z00007054112	M8X65	0,000		
---	0630.100.295		WASHER	4		Z00007158414		0,000		
450	---		BREATHER	1			M10X1KEG	0,000		
---	0501.218.540		BREATHER	1				0,000		





Parts list

Page 1 from 1

Material number: 1308.050.106

9 S 75 /

Plant: 064.08.02-1

Material-assembly-group-no: 1308.170.009



Pos.	Material number	Customer material	Name	Quantity	ME	Amend. no.	Techn. Info.	Weight	Rep kit	Alternative material
10	1304.307.425		GEAR SHIFT COVER	1				0,000		
20	0501.318.308		GASKET	1		C01004991B10		0,000		
30	---		HEXAGON BOLT	4		Z00007891312	M8X30	0,000		
---	0636.100.797		HEXAGON BOLT	4		Z00007891310	M8X30	0,000		
---	0630.100.251		SPRING WASHER	4		Z00007159812		0,000		
100	0634.300.020		SHAFT SEAL	1			25X32X5	0,000		
120	0730.260.330		BEARING BUSH	1			A=20,00 IN 0730 260 546(2)	0,000		
130	0634.300.302		SHAFT SEAL	1			25X35X7	0,000		
150	0634.307.367		SCRAPER	1				0,009		
300	---		COVER	1				0,000		
---	1304.307.154		COVER	1				0,000		
---	1304.307.069		COVER	1				0,000		
310	0501.318.308		GASKET	1		C01004991B10		0,000		
320	---		HEXAGON BOLT	4		Z00007891312	M8X30	0,000		
---	0636.100.797		HEXAGON BOLT	4		Z00007891310	M8X30	0,000		
---	0630.100.251		SPRING WASHER	4		Z00007159812		0,000		

Plant

Page 1 from 1

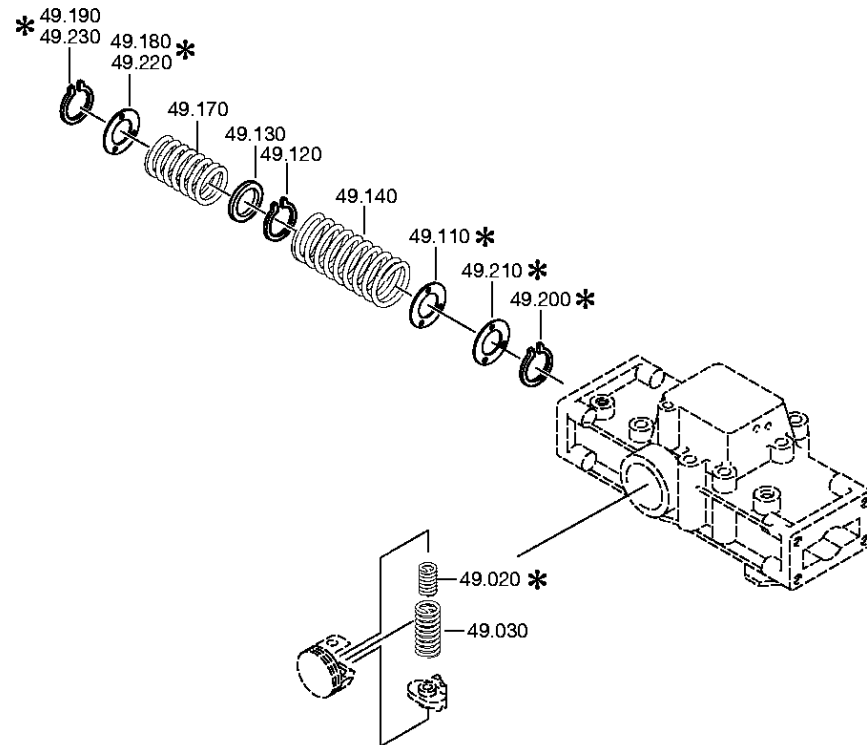
Material number: 1308.050.106

Plant: 064.12.04-1

Material-assembly-group-no: 1308.149.024

9 S 75 /

SET OF SPRINGS



Parts list

Page 1 from 1

Material number: 1308.050.106

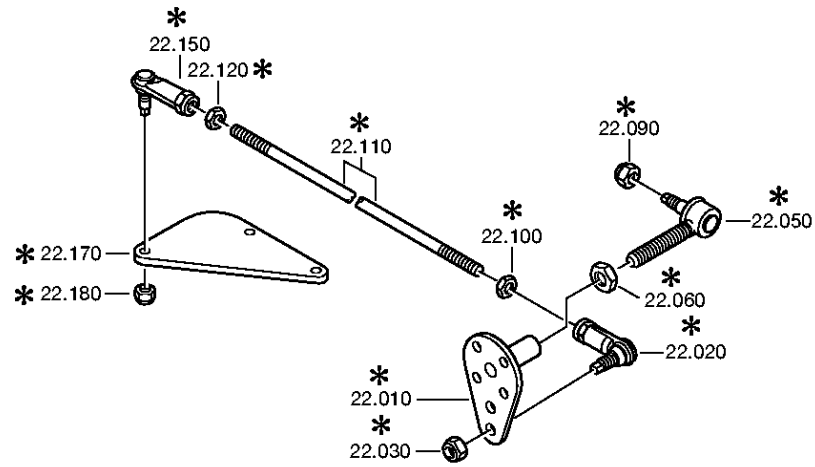
9 S 75 /

Plant: 064.12.04-1

Material-assembly-group-no: 1308.149.024



Pos.	Material number	Customer material	Name	Quantity	ME	Amend. no.	Techn. Info.	Weight	Rep kit	Alternative material
20	0732.042.366		COMPRSPRING	1				0,000		
30	0732.042.365		COMPRSPRING	1				0,000		
120	0630.532.138		V-RING	1				0,000		
130	---		WASHER	1		Z00011191810		0,000		
140	0732.040.989		COMPRSPRING	1				0,000		
170	0732.040.022		COMPRSPRING	1				0,000		
180	0730.301.376		WASHER	1		Z00008917410		0,000		
190	0630.532.138		V-RING	1				0,000		



Parts list

Page 1 from 1

Material number: 1308.050.106

9 S 75 /

Plant: 064.14.04-1

Material-assembly-group-no: 1308.122.422



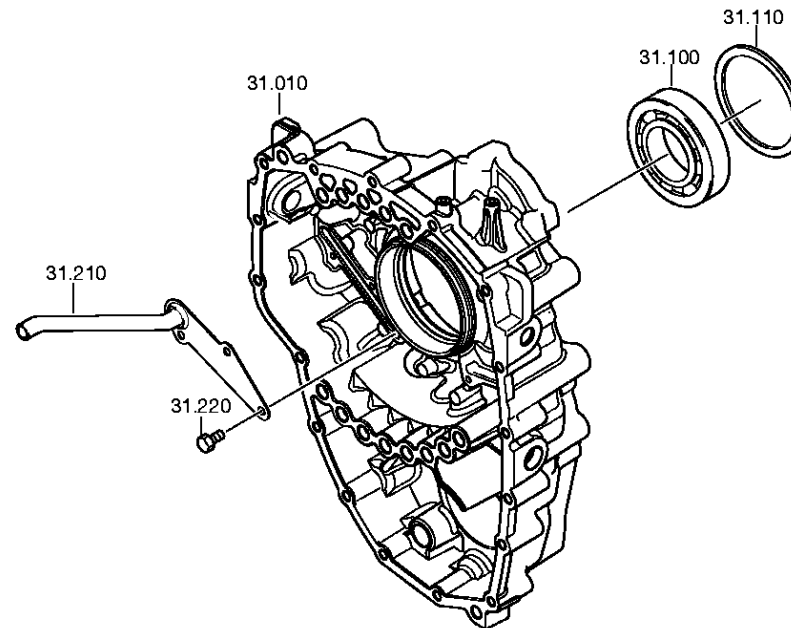
Pos.	Material number	Customer material	Name	Quantity	ME	Amend. no.	Techn. Info.	Weight	Rep kit	Alternative material
10	6005.200.250		CONNPART	1			KPL.	0,000		
20	0501.215.954		BALL JOINT	1			KPL.LI	0,000		
30	0637.011.656		HEXAGON NUT	1			M10	0,000		
50	0501.204.714		BALL JOINT	1			KPL. IN 0501 206 327(2)	0,000		
60	0637.100.243		HEXAGON NUT	1		Z00007282912	M14X1,5	0,000		
90	0637.100.236		HEXAGON NUT	1		Z00007283512	M10X1	0,000		
100	0637.100.262		HEXAGON NUT	1		Z00007283213	M12	0,000		
110	0736.300.264		DRAW BAR	1		Z00008928411		0,000		
120	0637.011.654		HEXAGON NUT	1		Z00007283114	M12	0,000		
150	0501.215.940		BALL JOINT	1			KPL.RE	0,000		
170	1308.307.225		SUPPORT PLATE	1		Z00011100910		0,000		
180	0637.011.656		HEXAGON NUT	1			M10	0,000		

Plant

Page 1 from 3

Material number: 1308.050.106
Plant: 064.43.03-1
GP HOUSING

9 S 75 /
GP HOUSING

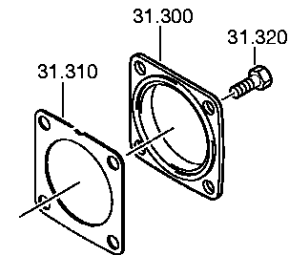
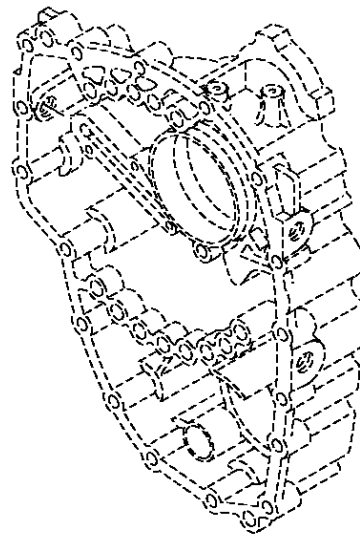


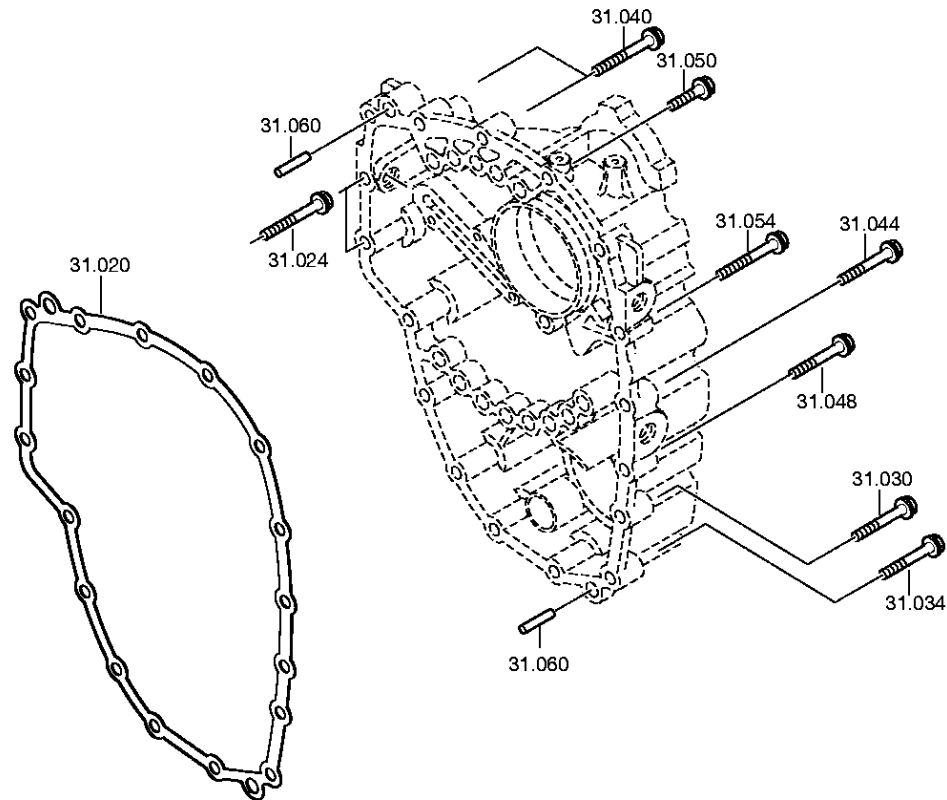
Plant

Page 2 from 3

Material number: 1308.050.106
Plant: 064.43.40-1
GP HOUSING

9 S 75 /
GP HOUSING





Parts list

Page 1 from 1

Material number: 1308.050.106

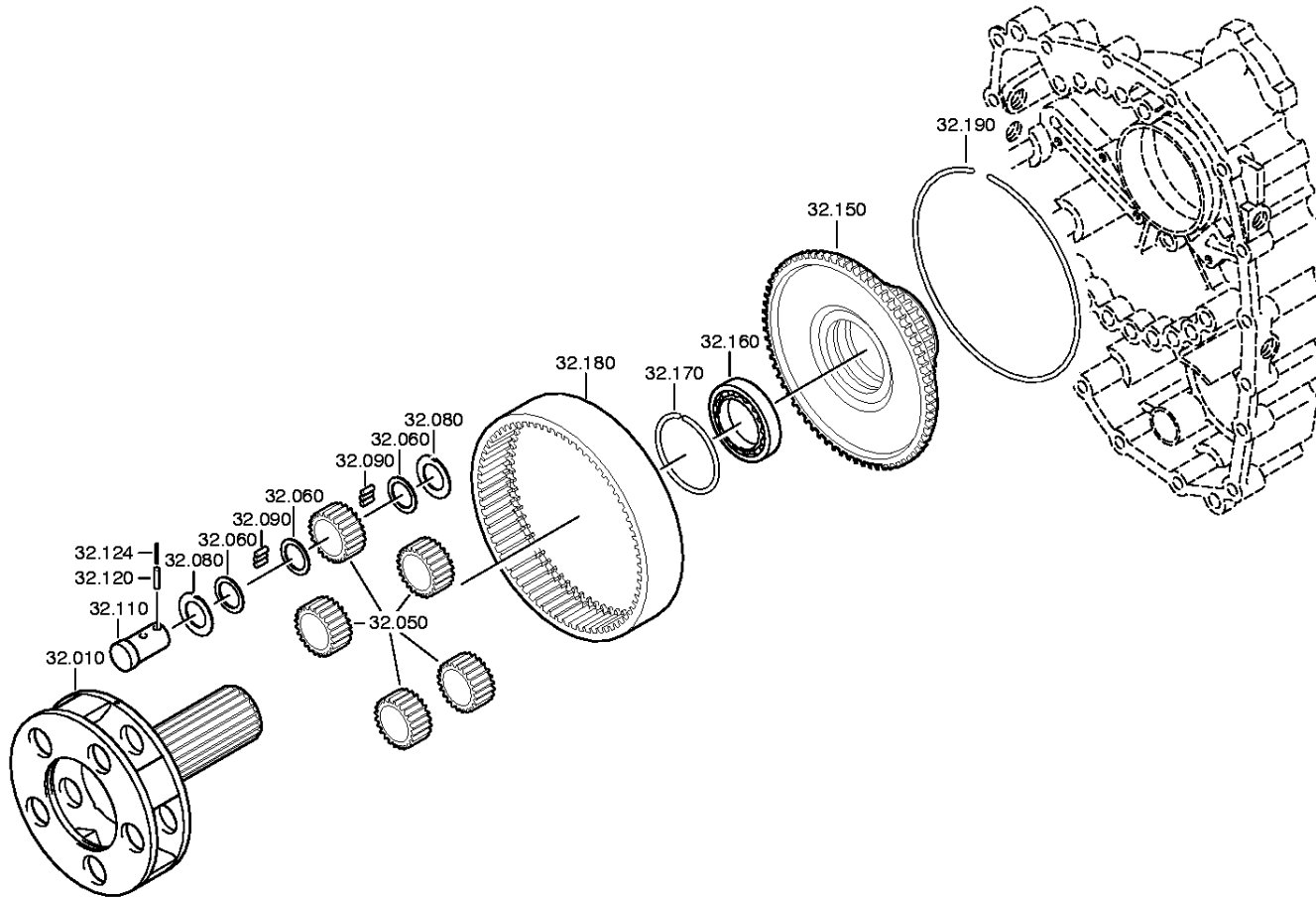
9 S 75 /

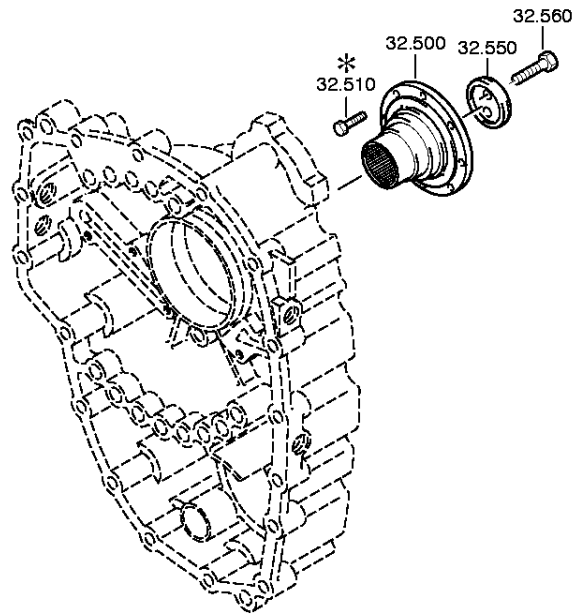
Plant: 064.43.03-1

Material-assembly-group-no: 1308.131.016



Pos.	Material number	Customer material	Name	Quantity	ME	Amend. no.	Techn. Info.	Weight	Rep kit	Alternative material
10	1308.301.234		HOUSING	1		C01001187F10		0,000		
20	1308.301.026		GASKET	1				0,000		
24	0736.300.135		HEXAGON BOLT	2		Z00009195110	M8X60	0,000		
30	0736.300.135		HEXAGON BOLT	7		Z00009195110	M8X60	0,000		
34	0736.300.135		HEXAGON BOLT	2		Z00009195110	M8X60	0,000		
40	0736.300.135		HEXAGON BOLT	2		Z00009195110	M8X60	0,000		
44	0736.300.135		HEXAGON BOLT	1		Z00009195110	M8X60	0,000		
48	0736.300.135		HEXAGON BOLT	1		Z00009195110	M8X60	0,000		
50	0636.011.768		HEXAGON BOLT	1		Z00007172310	M8X45	0,000		
54	0736.300.135		HEXAGON BOLT	1		Z00009195110	M8X60	0,000		
60	0731.201.620		CYLINDRICAL PIN	2				0,000		
100	0750.116.959		BALL BEARING	1			65,0X120,0X23,0	0,000		
110	---		SHIM	1			H= 1,30- 1,80(ABSTUFUNG:0,10MM)	0,000		
---	0730.002.654		SHIM	1				47		
---	0730.002.655		SHIM	1				0,040		
---	0730.002.656		SHIM	1				43		
---	0730.002.657		SHIM	1				39		
---	0730.002.658		SHIM	1				0,030		
---	0730.002.659		SHIM	1				29		
210	1308.201.002		PIPE	1			KPL.	0,000		
220	0636.100.611		HEXAGON BOLT	3		Z00007072911	M6X16	0,000		
300	1328.301.170		COVER	1		Z00008068010		0,000		
310	1238.308.201		GASKET	1			ENTHALT.IN 1238 308 202(2)	0,000		
320	0636.016.406		HEXAGON BOLT	4		Z00007061014	M12X25	0,000		





Parts list

Page 1 from 1

Material number: 1308.050.106

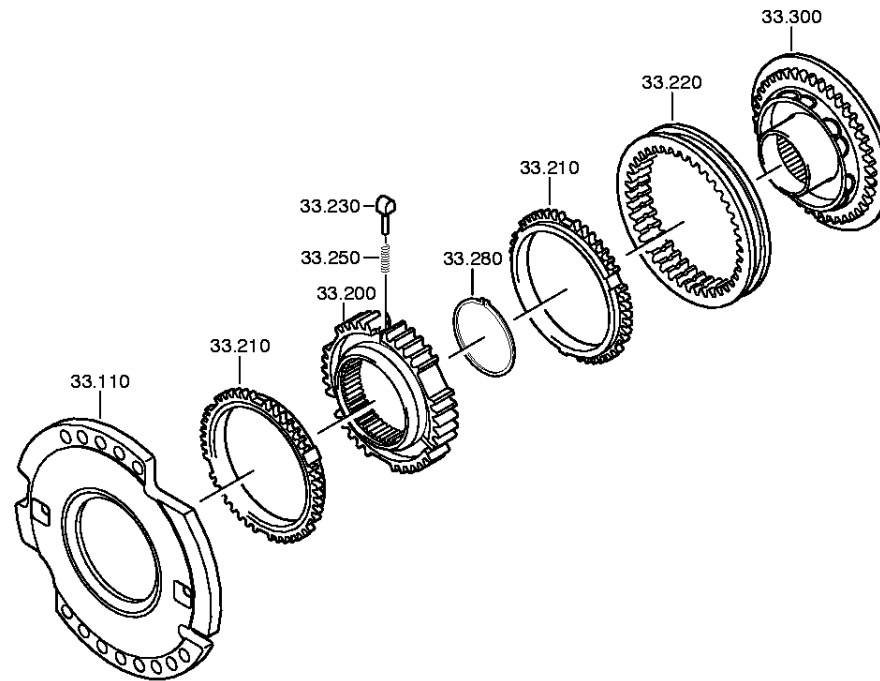
9 S 75 /

Plant: 064.44.01-1

Material-assembly-group-no: 1308.132.003



Pos.	Material number	Customer material	Name	Quantity	ME	Amend. no.	Techn. Info.	Weight	Rep kit	Alternative material
10	1308.232.011		PLANET CARRIER	1			KPL.	0,000		
50	1308.232.007		PLANET GEAR SET	1			KPL.	0,000		
60	0730.103.102		INTERM WASHER	15			A=1,50 IN 0730 105 951(2)	0,000		
80	0730.150.767		WASHER	10			A=1,50 IN 0501 304 086(2)	0,000		
90	0735.470.155		NEEDLE ROLLER	200			5,0X11,8 FA.INA	0,000		
110	1308.332.004		PLANET SHAFT	5				0,000		
120	0631.329.049		SLOTPIN	5			5X22	2		
124	0631.329.175		SLOTPIN	5			3X22	0,000		
150	1308.332.034		RING GEAR CARRIER	1			ENTHALT.IN 1308 332 029(1)	0,000		
160	0750.116.958		BALL BEARING	1			65,0X85,0X10,0	0,000		
170	---		SNAP RING	1		C01007853810	S= 1,80- 2,20(ABSTUFUNG:0,10MM)	0,000		
---	0730.513.574		SNAP RING	1			A=2,20 IN 0730 513 572(3)	0,000		
---	0730.513.573		SNAP RING	1			A=2,10 IN 0730 513 572(3)	0,000		
---	0730.513.744		SNAP RING	1			A=2,00 IN 0730 513 572(3)	0,000		
---	0730.513.743		SNAP RING	1			A=1,90 IN 0730 513 572(3)	0,000		
---	0730.513.742		SNAP RING	1			A=1,80 IN 0730 513 572(3)	0,000		
180	1308.332.026		RING GEAR	1			Z75 IN 1308 332 028(1)	0,000		
190	0730.505.149		LOCKING WIRE	1			A=2,00 IN 0730 505 052(2)	0,000		
500	1308.338.025		OUTPUT FLANGE	1				0,000		
550	1240.304.117		WASHER	1				310		
560	0636.016.407		HEXAGON BOLT	2		Z00009111110	M12X50	0,000		



Parts list

Page 1 from 1

Material number: 1308.050.106

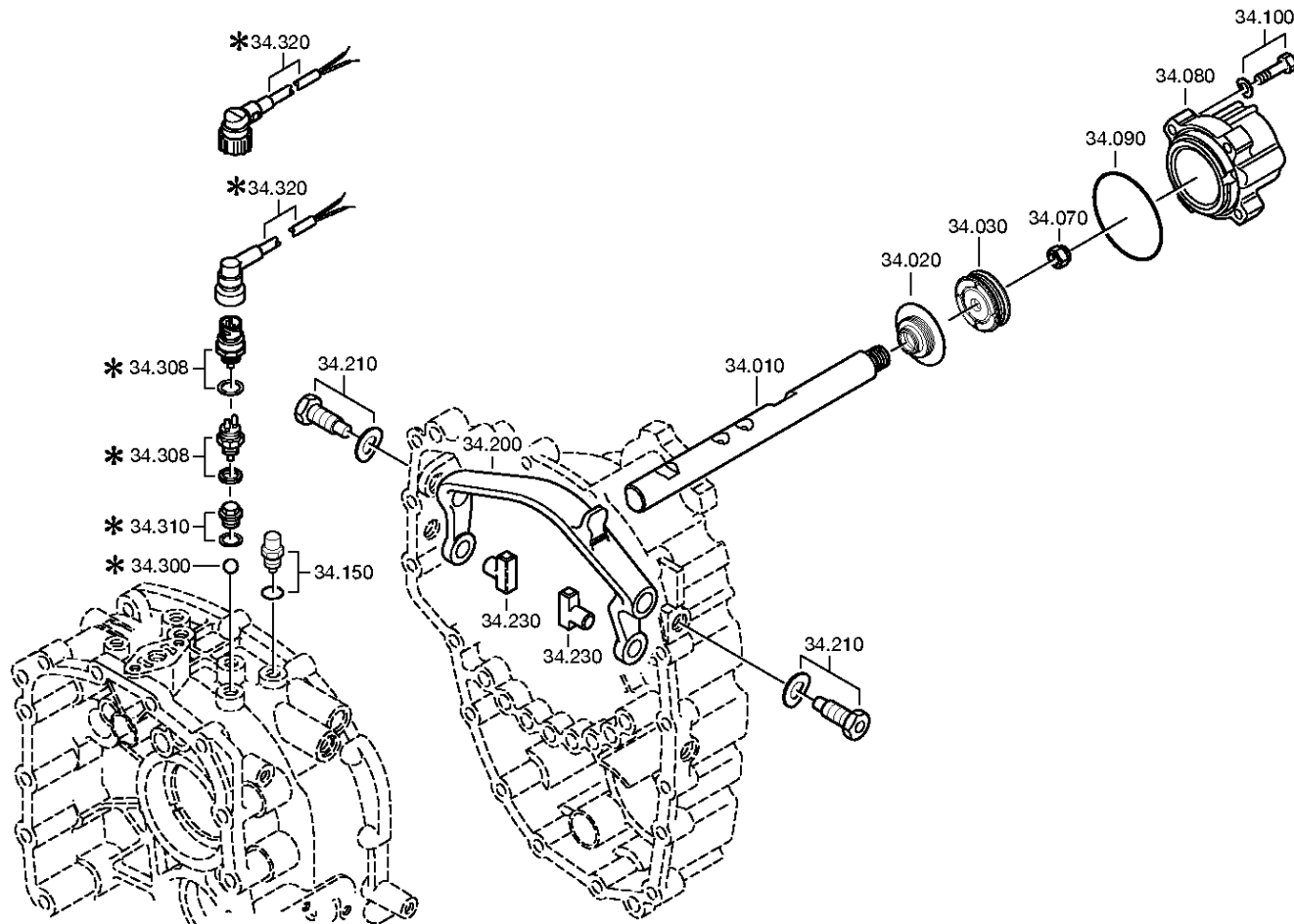
9 S 75 /

Plant: 064.45.01-1

Material-assembly-group-no: 1308.133.002



Pos.	Material number	Customer material	Name	Quantity	ME	Amend. no.	Techn. Info.	Weight	Rep kit	Alternative material
110	1308.233.003		CLUTCH BODY	1		C01002333A10	KPL.	0,000		
200	1308.332.036		SYNCHROBODY	1			ZF-BK131	0,000		
210	1268.304.594		SYNCHRO RING	2			ZFBK 131	0,000		
220	1308.332.015		SLIDING SLEEVE	1			ENTHALT.IN 1308 332 037(1)	0,000		
230	1297.304.437		PRESSURE PIECE	3				0,000		
250	0732.040.409		COMPRSPRING	3		C01007317F10		0,002		
280	---		RETAINING RING	1			S= 2,90- 3,20(ABSTUFUNG:0,10MM)	0,000		
---	0730.501.505		RETAINING RING	1			A=3,20 IN 0730 501 503(2)	0,000		
---	0730.501.504		RETAINING RING	1			A=3,10 IN 0730 501 503(2)	0,000		
---	0630.531.138		RETAINING RING	1			92X3	0,000		
---	0730.501.574		RETAINING RING	1			A=2,90 IN 0730 501 503(2)	0,000		
300	1308.232.010		CLUTCH BODY	1			KPL.	0,000		



Parts list

Page 1 from 1

Material number: 1308.050.106

9 S 75 /

Plant: 064.46.03-1

Material-assembly-group-no: 1308.134.008



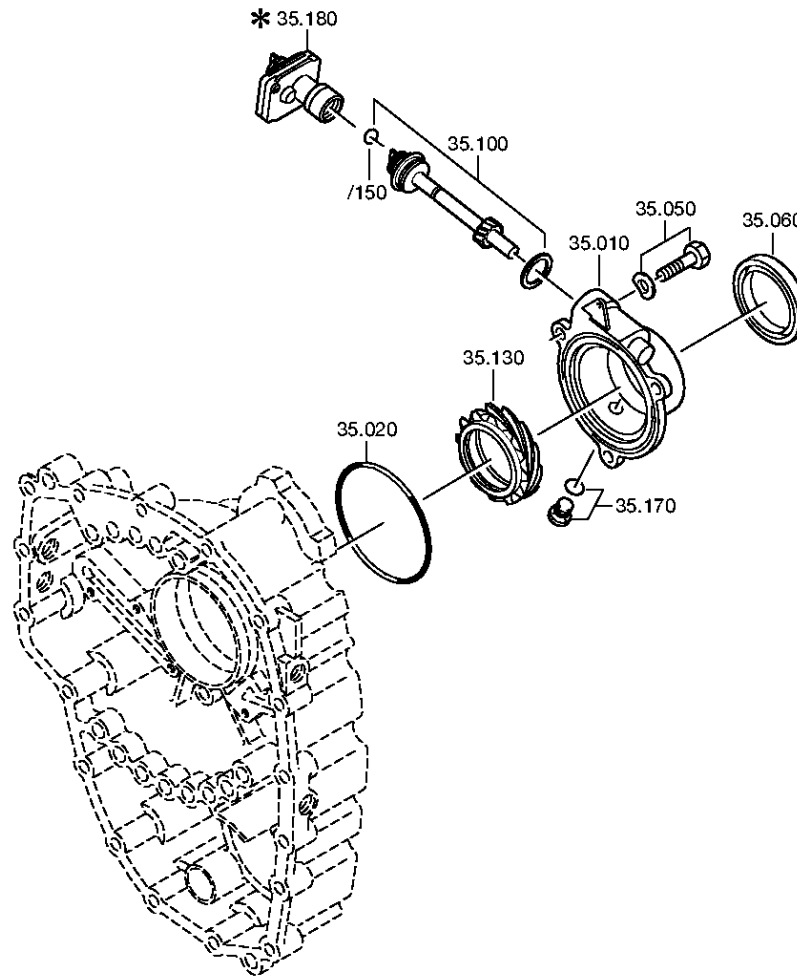
Pos.	Material number	Customer material	Name	Quantity	ME	Amend. no.	Techn. Info.	Weight	Rep kit	Alternative material
10	1308.334.014		GEAR SHIFT RAIL	1				0,000		
20	0750.111.571		FLANGE PACKING	1		C01005124F10	22X36X14,5	0,000		
30	0734.309.377		PISTON	1				0,000		
70	0737.300.037		LOCKING NUT	1		Z00008929010	MS16X1,5	0,000		
80	1308.334.011		CYLINDER	1				0,000		
90	0634.313.216		O-RING	1			82X2,5	0,000		
100	---		HEXAGON BOLT	4		Z00007891312	M8X30	0,000		
---	0636.100.797		HEXAGON BOLT	4		Z00007891310	M8X30	0,000		
---	0630.100.251		SPRING WASHER	4		Z00007159812		0,000		
150	---		DETENT PLUNGER	1		C01006305E10	105N*50N.M*90GRAD	0,000		
---	1324.207.034		DETENT PLUNGER	1				0,049		
---	0730.008.604		SEALING RING	1				0,000		
200	1308.334.001		GEAR SHIFT FORK	1				0,000		
210	---		ARTICULATION BOLT	2			M20X1,5	0,000		
---	1304.332.041		ARTICULATION BOLT	2			M20X1,5 IN 1304 306 037(2)	0,000		
---	0630.302.064		SPRING WASHER	2				8		
230	1297.306.120		SLIDING PAD	2				0,000		
300	0635.460.024		BALL	1			13	0,000		
308	---		SWITCH	1			SCHL *45N.M* DICHTRING	0,000		
---	0501.311.807		SWITCH	1				61,100		
---	0634.801.062		SEALING RING	1			18X24	0,001		

Plant

Page 1 from 1

Material number: 1308.050.106
Plant: 064.47.02-1
SPEEDOMETER COVER

9 S 75 /
SPEEDOMETER COVER



Parts list

Page 1 from 1

Material number: 1308.050.106

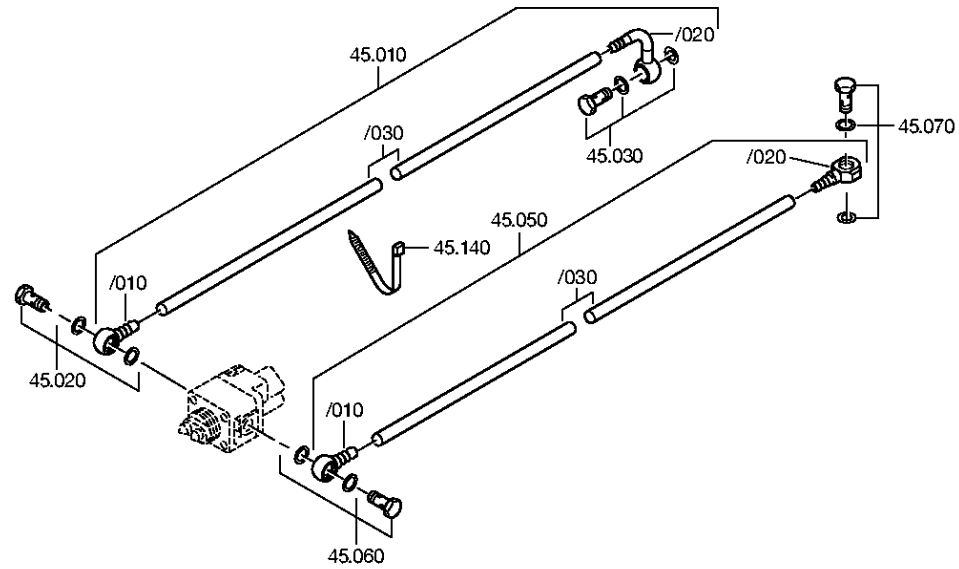
9 S 75 /

Plant: 064.47.02-1

Material-assembly-group-no: 1308.135.008



Pos.	Material number	Customer material	Name	Quantity	ME	Amend. no.	Techn. Info.	Weight	Rep kit	Alternative material
10	1308.301.120		COVER	1				0,000		
20	0634.313.424		O-RING	1			134X3	0,000		
50	---		HEXAGON BOLT	3		Z00007056513	M10X35	0,000		
---	0636.015.682		HEXAGON BOLT	3		Z00007056519	M10X35	0,000		
---	0630.100.241		SPRING WASHER	3		Z00007160012		0,000		
60	0750.111.334		SHAFT SEAL	1			80X100X10	0,000		
100	---		SPEEDO SHAFT	1			Z14*LI	0,000		
---	1308.208.002		SPEEDO SHAFT	1			KPL.Z14/LI	0,000		
/150	0634.300.185		SHAFT SEAL	1			10X15X3	1		
---	0634.100.177		SEALING RING	1		Z00007922012	30X36	0,000		
130	1308.308.009		SPEEDOMETER WORM	1				0,000		
170	---		SCREW PLUG	1		Z00010111513	35N.M*DICHTRING M18X1,5	0,000		
---	0636.100.791		SCREW PLUG	1		Z00010111521	M18X1,5	0,000		
---	0634.801.062		SEALING RING	1		Z00010111521	18X24	0,001		



Parts list

Page 1 from 1

Material number: 1308.050.106

9 S 75 /

Plant: 064.57.02-1

Material-assembly-group-no: 1308.145.002



Pos.	Material number	Customer material	Name	Quantity	ME	Amend. no.	Techn. Info.	Weight	Rep kit	Alternative material
10	6007.202.191		PIPE	1			KPL.370,00MM	0,000		
/10	0637.100.742		RING PIECE	1				0,000		
/20	1324.245.034		RING PIECE	1		Z00007831810	KPL.	0,000		
/30	0632.707.004		PIPE	370		C01000688E10	9X1,5	0,000		
20	---		UNION SCREW	1		Z00010274511	M14X1,5	0,000		
---	0737.300.061		UNION SCREW	1		Z00012473710	M14X1,5	0,000		
---	0634.801.217		SEALING RING	1		Z00010274513	14X20	0,000		
30	---		UNION SCREW	1		C01003943B10		0,000		
---	0637.835.808		UNION SCREW	1		Z00010274712		0,000		
---	0730.008.056		SEALING RING	1			A12X17	0,000		
50	6007.202.192		PIPE	1			KPL.450,00MM	0,000		
/10	0637.100.742		RING PIECE	1				0,000		
/20	0637.100.422		RING PIECE	1		Z00007956611		0,000		
/30	0632.707.004		PIPE	450		C01000689E10	9X1,5	0,000		
60	---		UNION SCREW	1		Z00010274511	M14X1,5	0,000		
---	0737.300.061		UNION SCREW	1		Z00012473710	M14X1,5	0,000		
---	0634.801.217		SEALING RING	1		Z00010274513	14X20	0,000		
70	---		UNION SCREW	1		C01003943B10		0,000		
---	0637.835.808		UNION SCREW	1		Z00010274712		0,000		
---	0730.008.056		SEALING RING	1			A12X17	0,000		
140	0659.160.068		CABLE CLIP	2				0,000		