

# Plan 1 - 640 SQFT - 2 Bedroom Affordable Container Home

## 2 x 40' Type 1A HC Container with Lightweight Concrete Pier Foundation

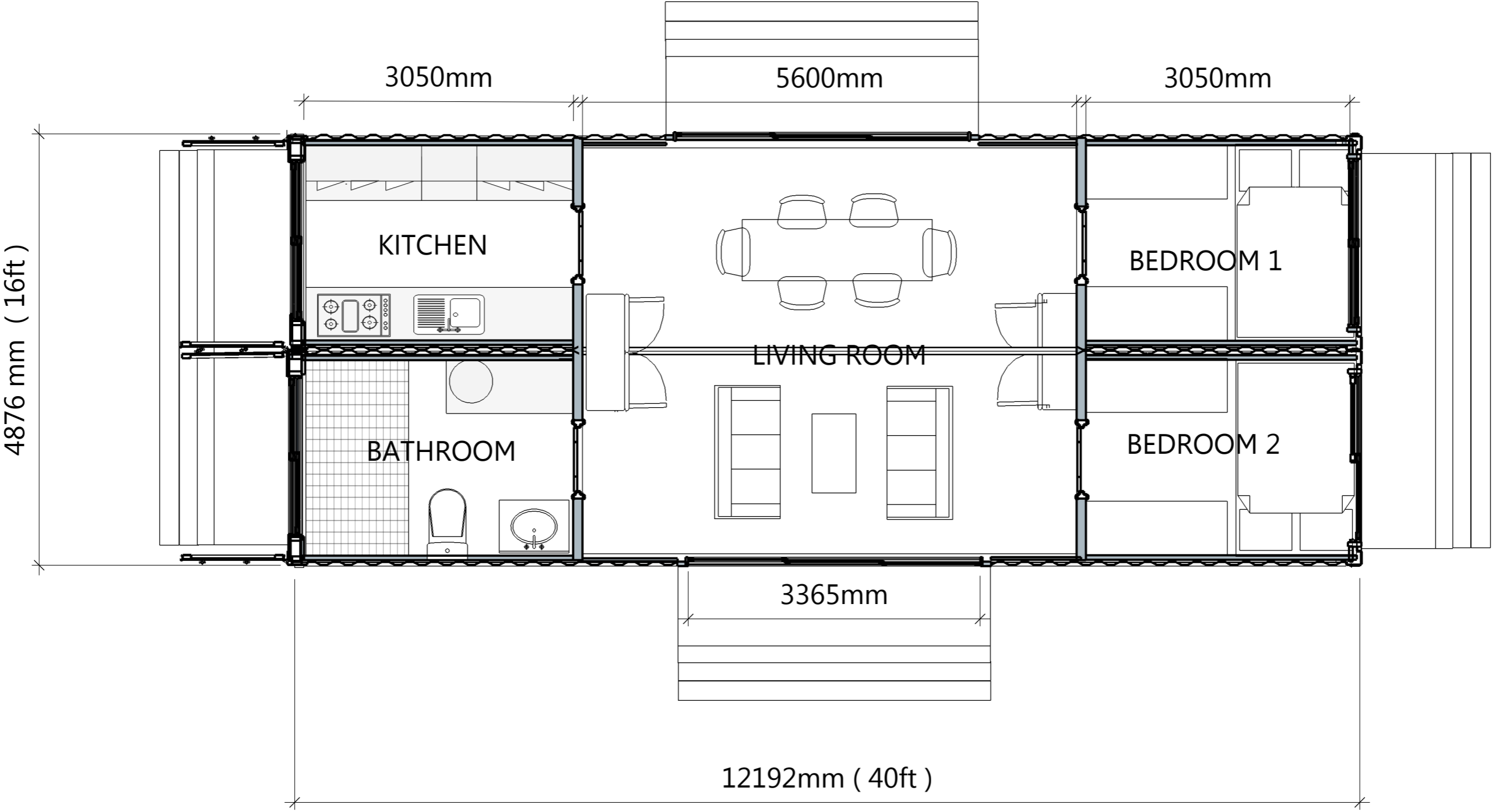


2 x 40' Type 1A HC Container - Design 1  
 2 Bedroom Affordable Container Home

REVISIONS	
MM/DD/YY	REMARKS
1	---/---/--- ...
2	---/---/--- ...
3	---/---/--- ...
4	---/---/--- ...
5	---/---/--- ...

**CONCEPT PLAN**

**Plan 1 - 640 SQFT - 2 Bedroom Affordable Container Home**  
**2 x 40' Type 1A HC Container with Lightweight Concrete Pier Foundation**



2 x 40' Type 1A High Cube Container - Design 1

Floor Plan

REVISIONS	
MM/DD/YY	REMARKS
1	---/---/--- ...
2	---/---/--- ...
3	---/---/--- ...
4	---/---/--- ...
5	---/---/--- ...

**CONCEPT PLAN**

# 2 x 40' Type 1A HC Container Affordable Container Home

## Side Elevation 1

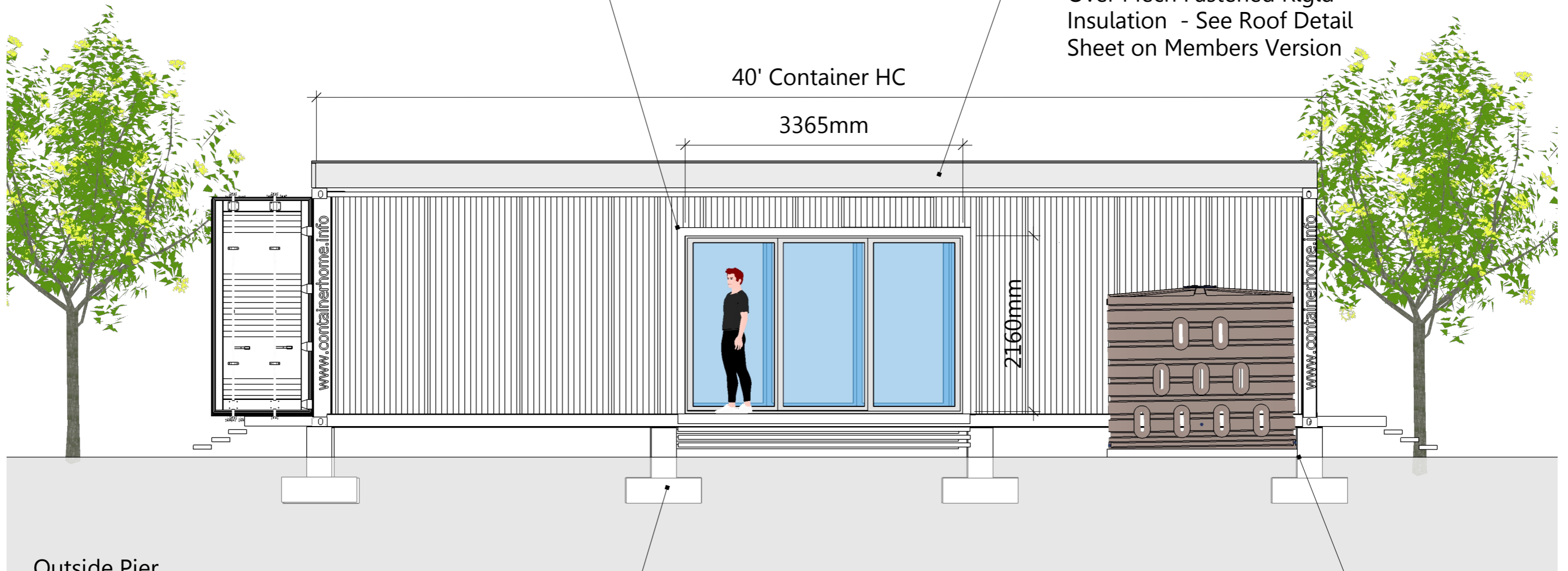
Window Cut outs and Frame Reinforcement  
See Window Detail Sheet on Members Version

T&G Plywood Roof  
Covered with  
0.60 Mill EPDM Rubber  
Over Mech Fastened Rigid  
Insulation - See Roof Detail  
Sheet on Members Version

40' Container HC

3365mm

2160mm



Outside Pier  
3FT X 3FT X 1 FT Foundation - Cast Concrete  
1 FT X 1FT X 2FT Pier  
Shim to required height  
See Foundation Detail  
Drawings and Notes on  
Members Version

Rain Water Tank

2 x 40' Type 1A HC Container - Design 1

Side Elevation 1

REVISIONS	
MM/DD/YY	REMARKS
1	---/---/--- ...
2	---/---/--- ...
3	---/---/--- ...
4	---/---/--- ...
5	---/---/--- ...

**CONCEPT PLAN**

A



## 2 x 40' Type 1A HC Container Affordable Container Home

Window Cut outs and Frame Reinforcement  
See Window Detail Sheet on Members Version

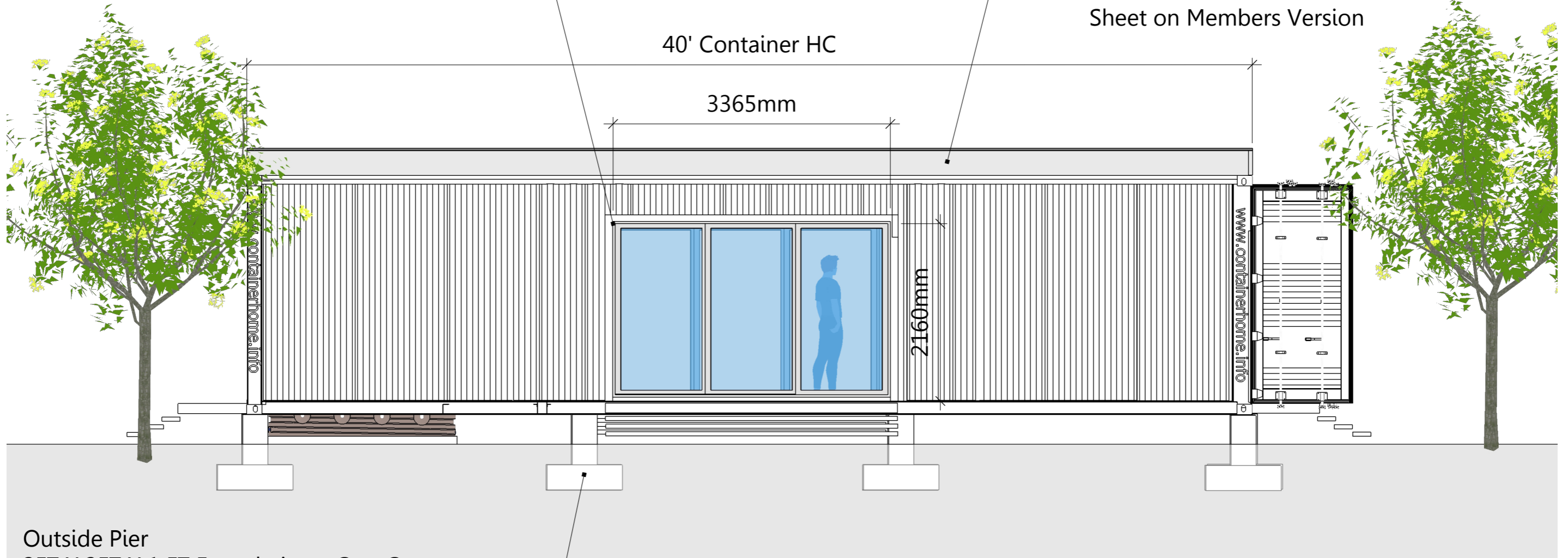
### Side Elevation 2

T&G Plywood Roof  
Covered with  
0.60 Mill EPDM Rubber  
Over Mech Fastened Rigid  
Insulation - See Roof Detail  
Sheet on Members Version

40' Container HC

3365mm

2160mm



Outside Pier  
3FT X 3FT X 1 FT Foundation - Cast Concrete  
1 FT X 1FT X 2FT Pier  
Shim to required height  
See Foundation Detail  
Drawings and Notes on  
Members Version

**2 x 40' Type 1A HC Container - Design 1**

**Side Elevation 2**

REVISIONS	
MM/DD/YY	REMARKS
1	---/---/--- ...
2	---/---/--- ...
3	---/---/--- ...
4	---/---/--- ...
5	---/---/--- ...

**CONCEPT PLAN**



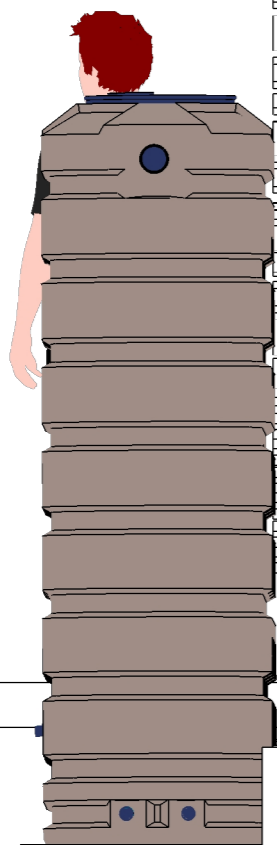
4876 mm ( 16ft )

1910 mm Rough Opening

1910 mm Rough Opening

**Window Frame  
6" x 2" x 3/16th  
Steel Tube  
See End Wall  
Framing Detail  
Sheet on Members  
Version**

2145 mm Rough Opening



Cast in Place  
Concrete Piers  
Steel Reinforced  
See Foundation  
Plan and  
Foundation Detail

Add and adjust  
Stair to Grade

**2 x 40' Type 1A HC Container - Design 1**

**End Wall Elevation**

REVISIONS

MM/DD/YY	REMARKS
1	...
2	...
3	...
4	...
5	...

**CONCEPT PLAN**

**A**

4876 mm ( 16ft )

9'6" ft HC Container

**Window Frame**  
6" x 2" x 3/16th  
Steel Tube  
See End Wall  
Framing Detail  
Sheet on Members  
Version

Rain Water Tank

Cast in Place  
Concrete Piers  
Steel Reinforced  
See Foundation  
Plan  
and Foundation  
Detail

Add and adjust Stair to Grade

**2 x 40' Type 1A HC Container - Design 1**

**Door End Elevation**

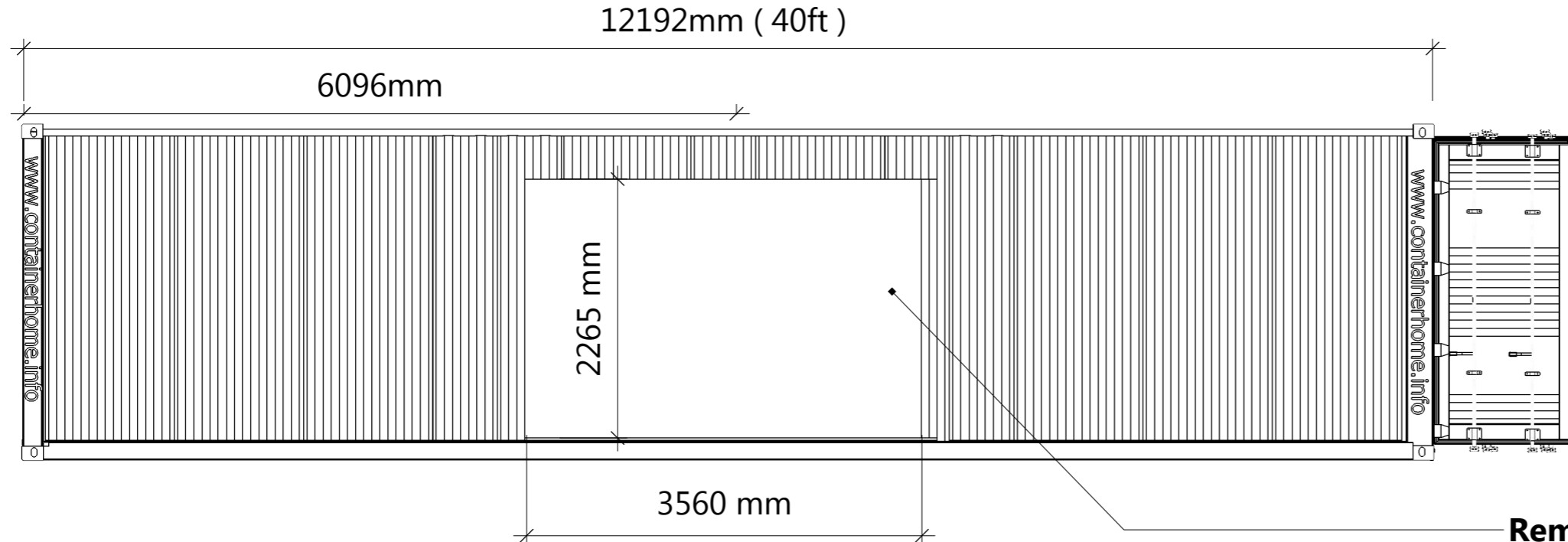
REVISIONS

	MM/DD/YY	REMARKS
1	---/---/---	...
2	---/---/---	...
3	---/---/---	...
4	---/---/---	...
5	---/---/---	...

**CONCEPT PLAN**

**A**

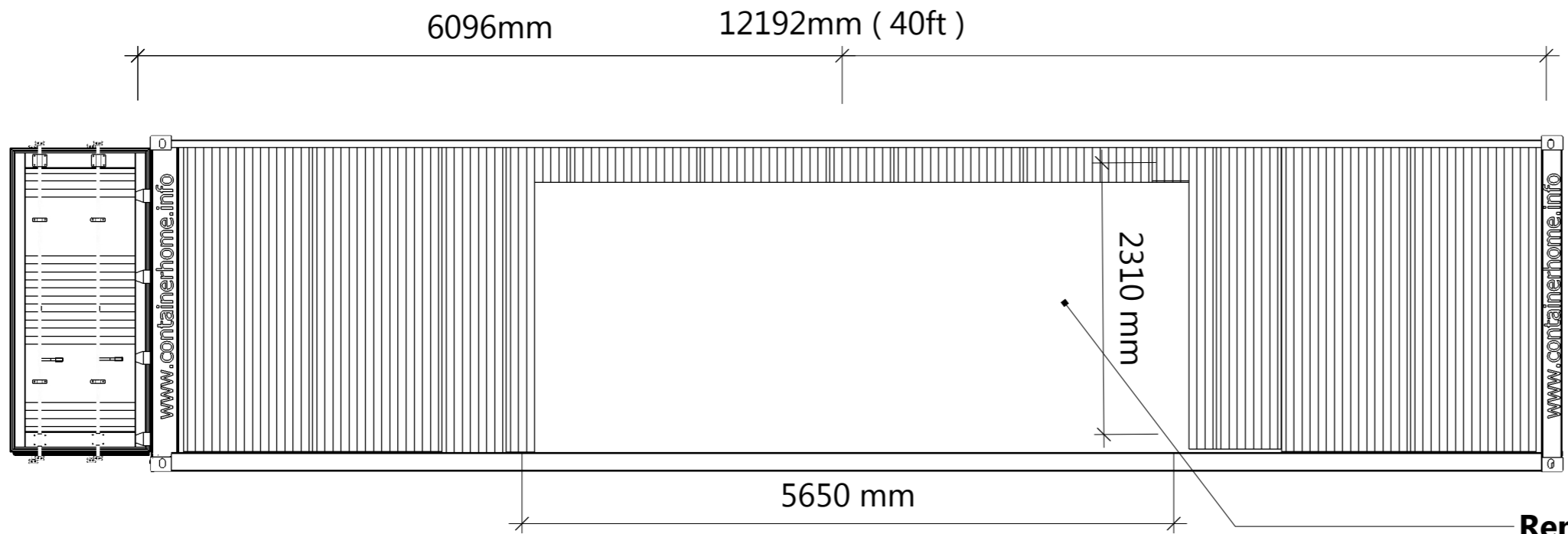
**Container Demolition Plan  
Removal of Container Wall**



**CONTAINER B**

Retain Container Doors

**Remove Container Side Wall  
as indicated 3560 mm W x 2265mm H  
Wall at this point is 1.6mm Thick**



**CONTAINER B**

**Remove Container Side Wall  
as indicated 5650 mm W x 2310 mm H  
Wall at this point is 1.6mm Thick**

**2 x 40' Type 1A High Cube Container - Design 1**

**Container Demolition Plan**

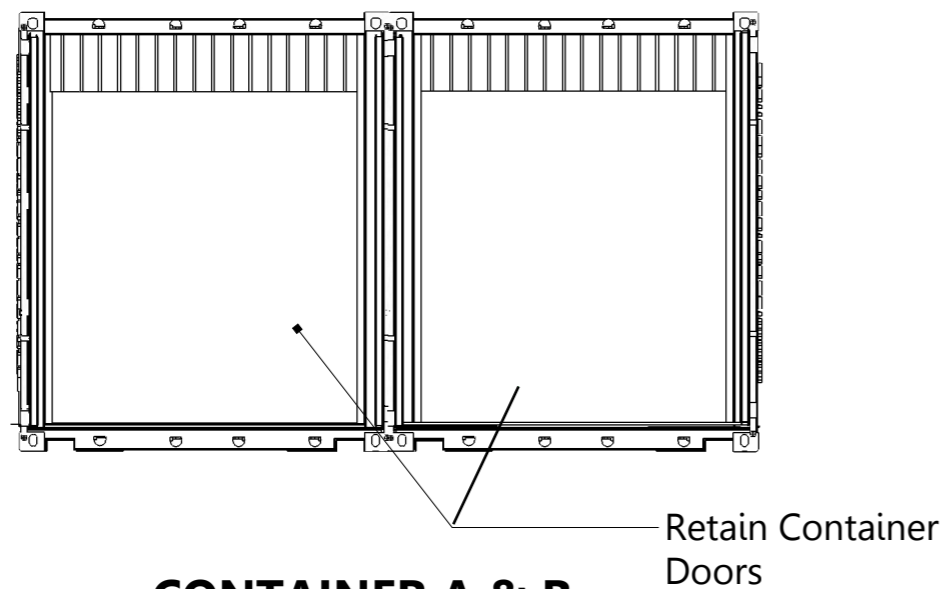
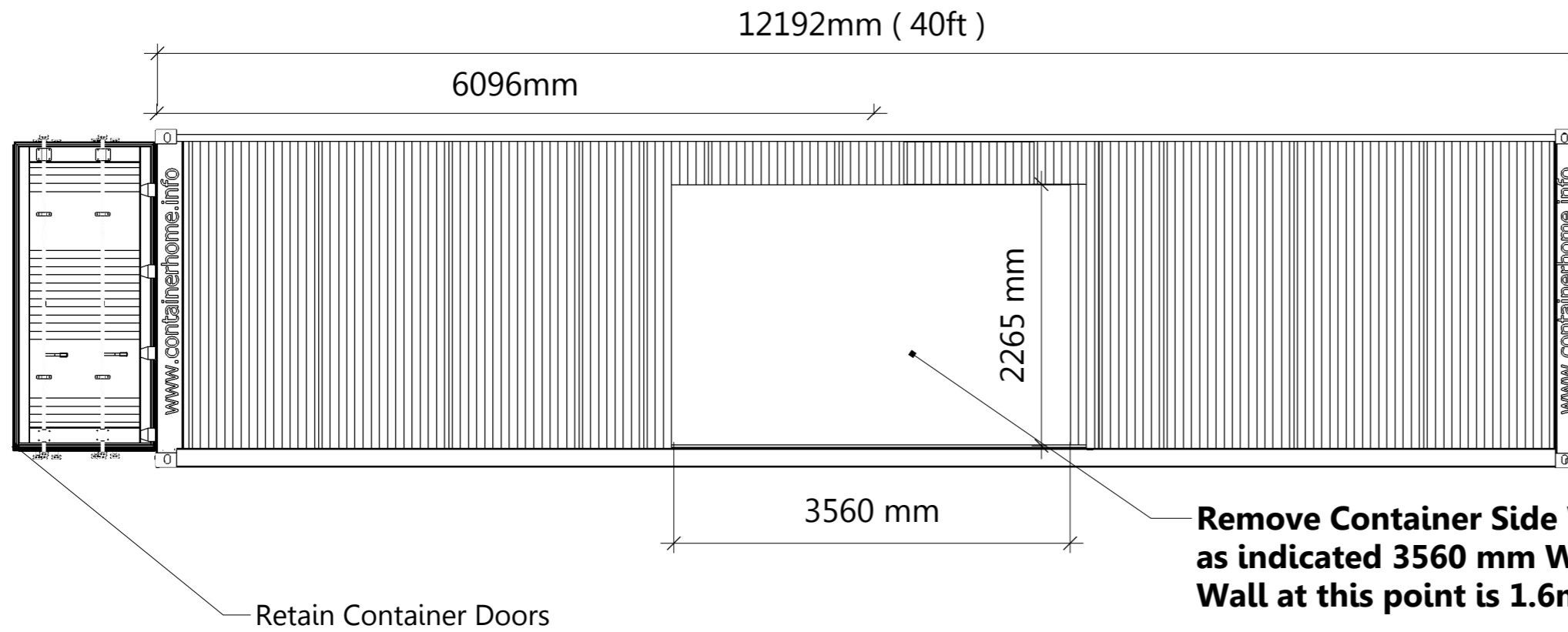
REVISIONS	
MM/DD/YY	REMARKS
1	---/---/--- ...
2	---/---/--- ...
3	---/---/--- ...
4	---/---/--- ...
5	---/---/--- ...

**CONCEPT PLAN**

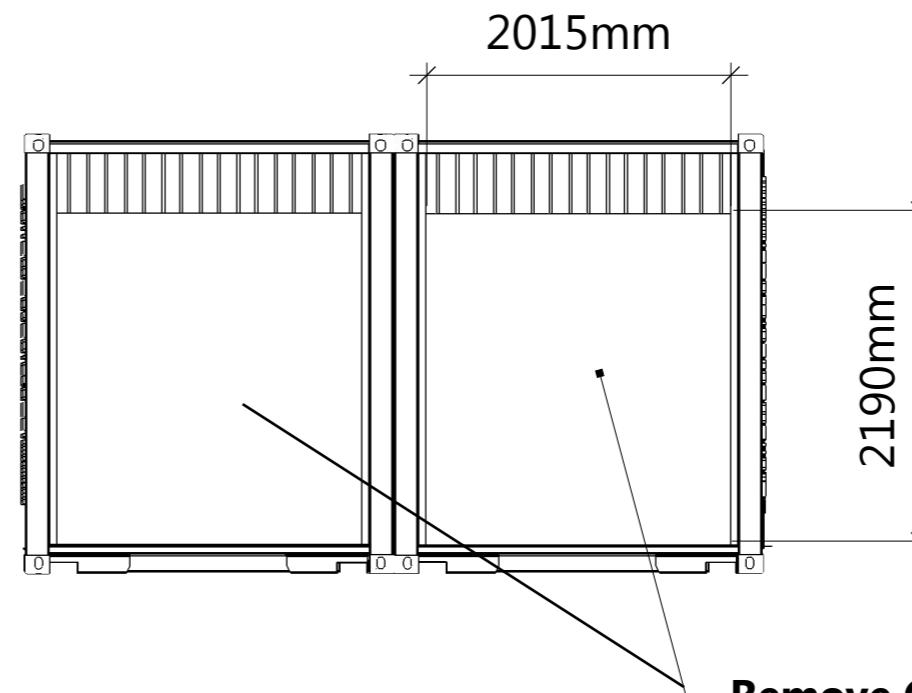


**Container Demolition Plan  
Removal of Container Wall**

**CONTAINER A**



**CONTAINER A & B  
FRONT DOOR  
ELEVATION**



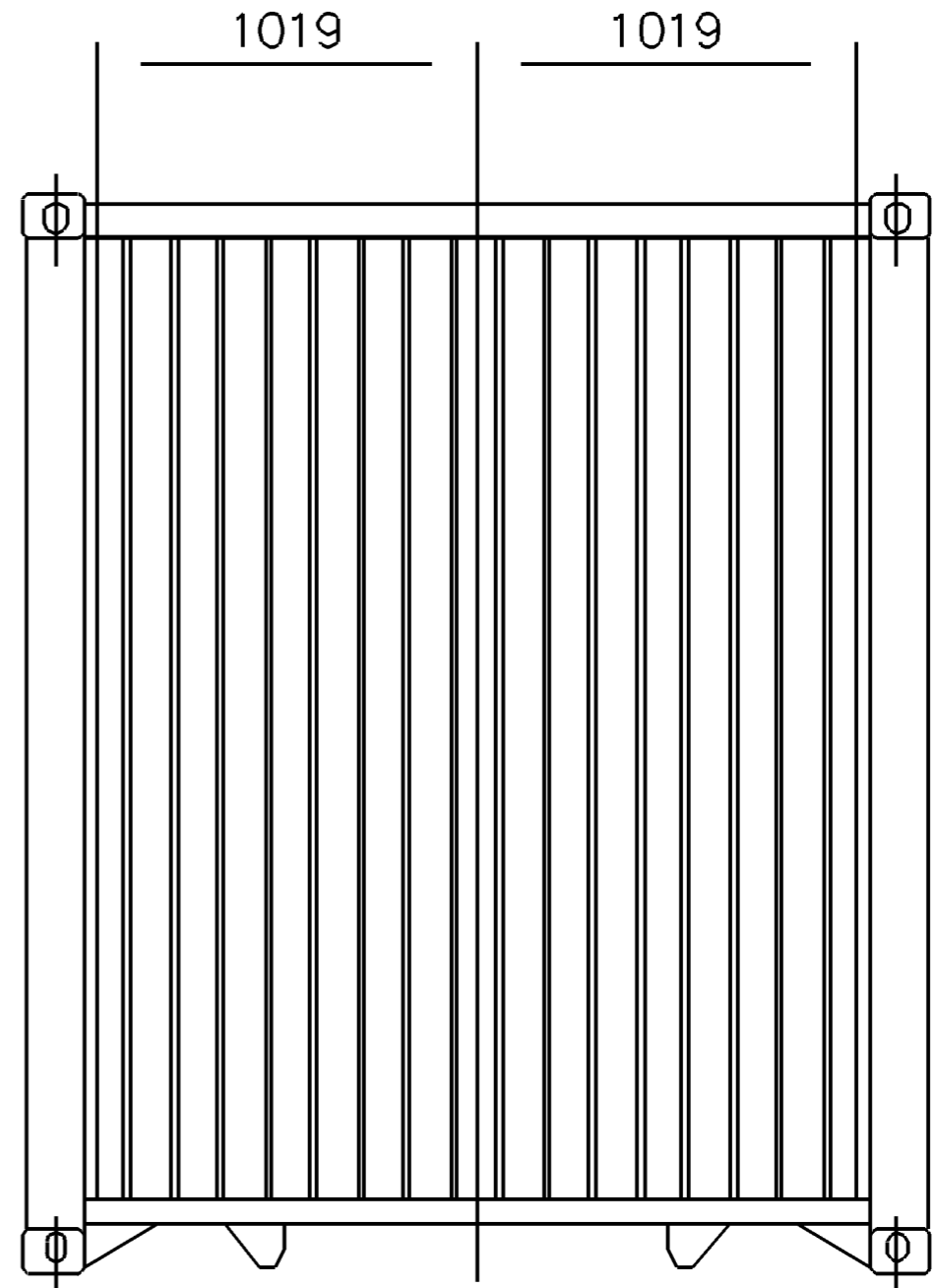
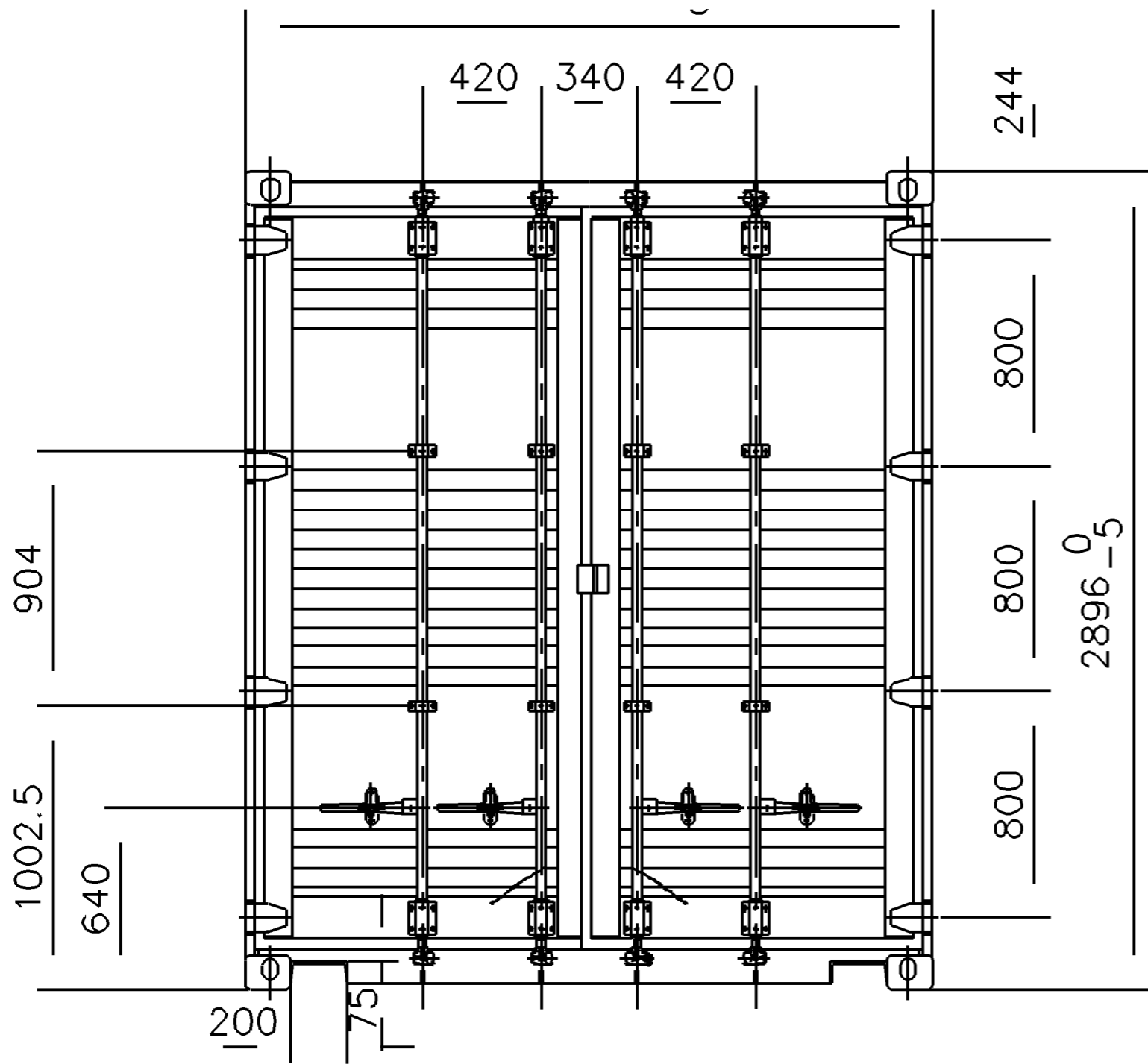
**CONTAINER A & B  
END WALL  
ELEVATION**

2 x 40' Type 1A High Cube Container - Design 1

Container Demolition Plan

REVISIONS	
MM/DD/YY	REMARKS
1	---/---/--- ...
2	---/---/--- ...
3	---/---/--- ...
4	---/---/--- ...
5	---/---/--- ...

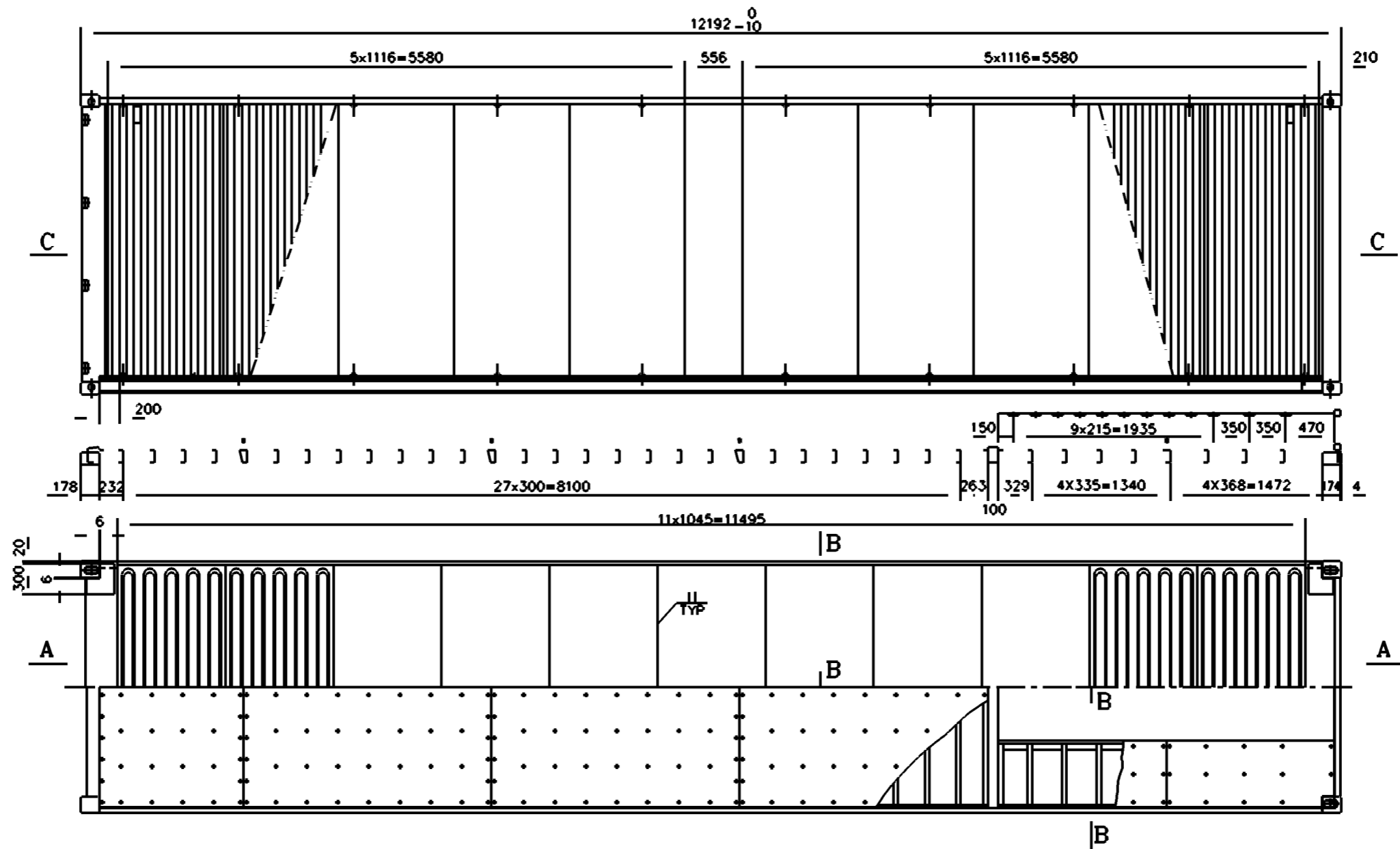
**CONCEPT PLAN**



**HC CONTAINER DIMENSIONS**

REVISIONS	
MM/DD/YY	REMARKS
1	---/---/--- ...
2	---/---/--- ...
3	---/---/--- ...
4	---/---/--- ...
5	---/---/--- ...

**CONCEPT PLAN**

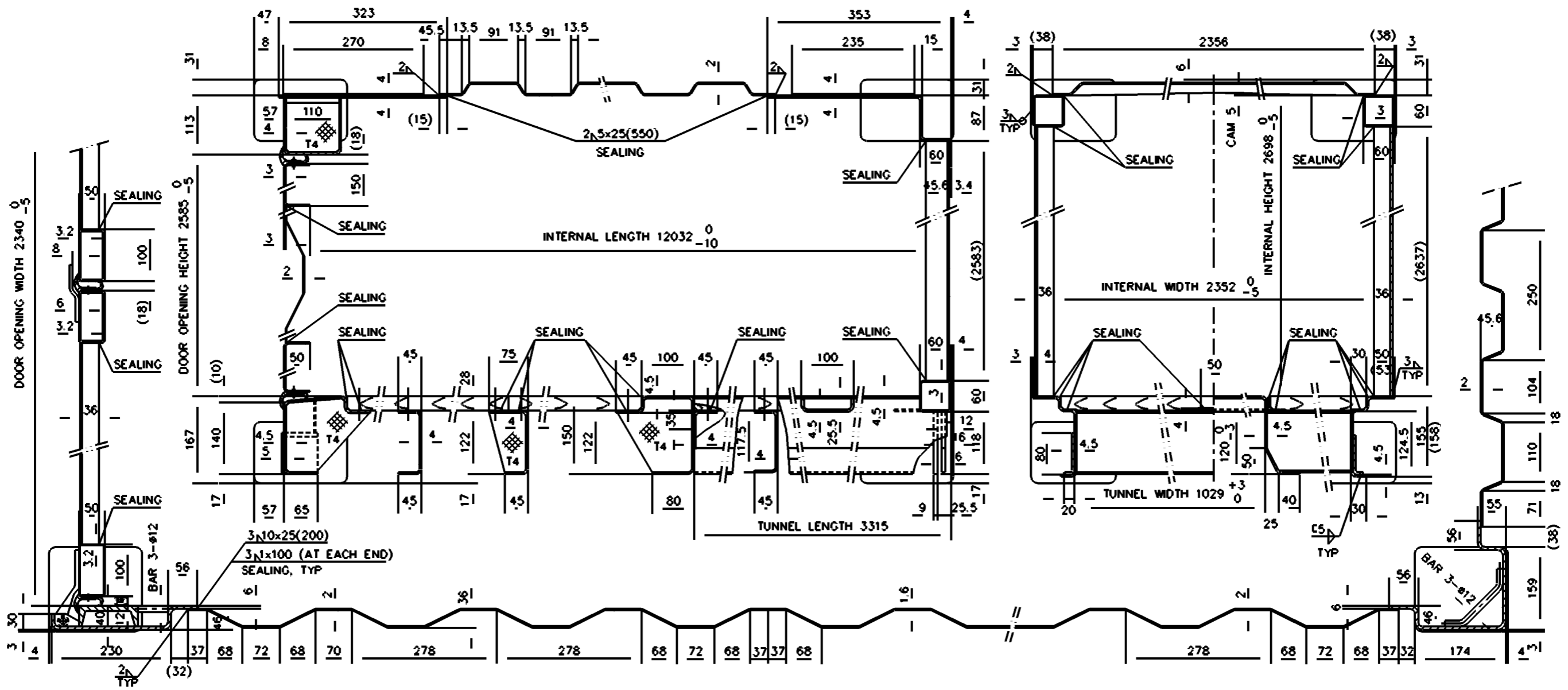


**HC CONTAINER DIMENSIONS**

REVISIONS	
MM/DD/YY	REMARKS
1	---/---/--- ...
2	---/---/--- ...
3	---/---/--- ...
4	---/---/--- ...
5	---/---/--- ...

**CONCEPT PLAN**





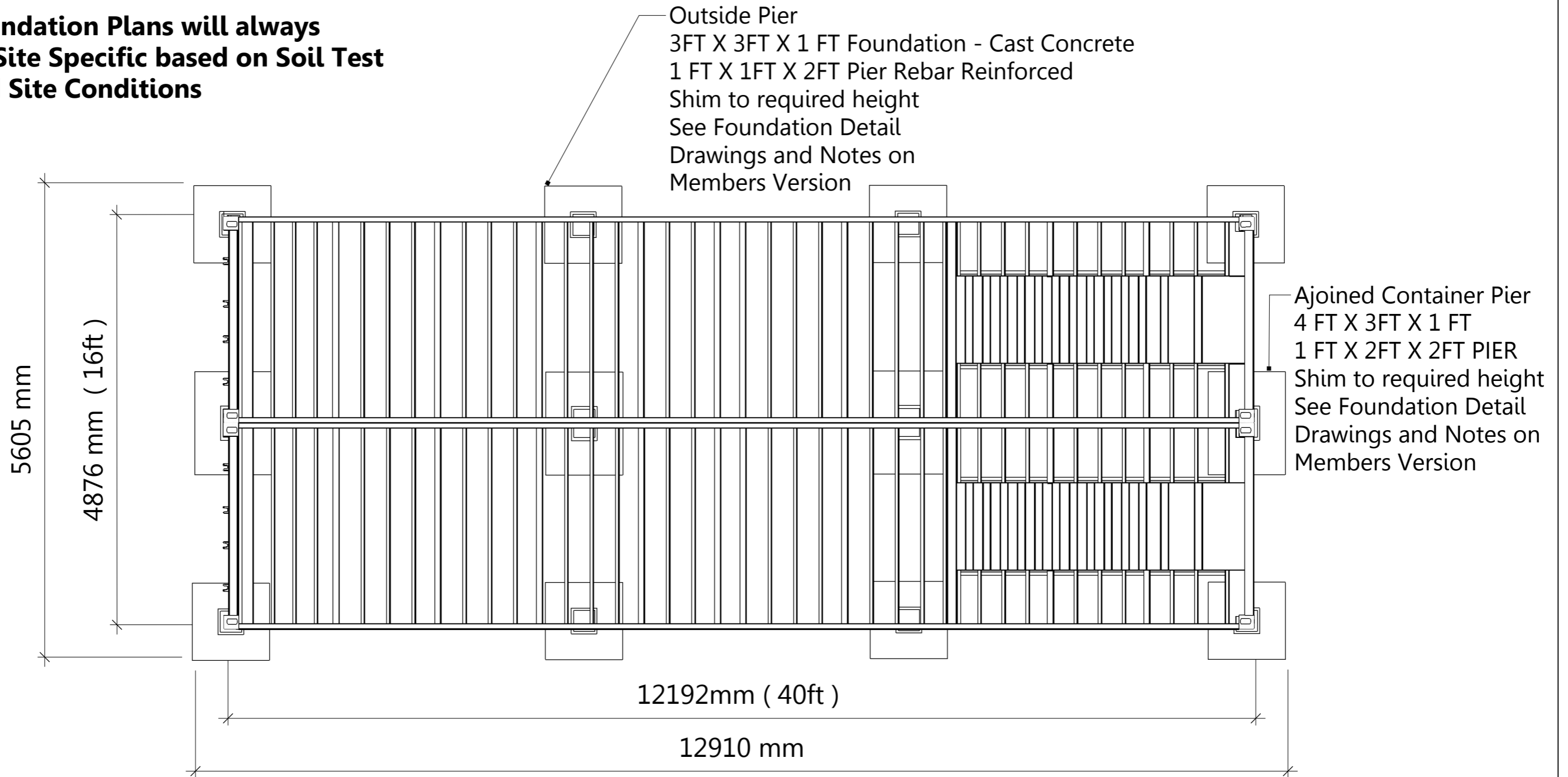
HC CONTAINER DIMENSIONS

REVISIONS	
MM/DD/YY	REMARKS
1	... / ... / ...
2	... / ... / ...
3	... / ... / ...
4	... / ... / ...
5	... / ... / ...

**CONCEPT PLAN**

## 2 x 40' Type 1A HC Container Affordable Container Home

**Foundation Plans will always be Site Specific based on Soil Test and Site Conditions**



Outline of the Container 12192 x 2438 mm ( 40 ft x 8ft )  
 Important to Field Verify Exact Dimensions \*

**2 x 40' Type 1A High Cube Container - Design 1**

**Foundaton Plan**

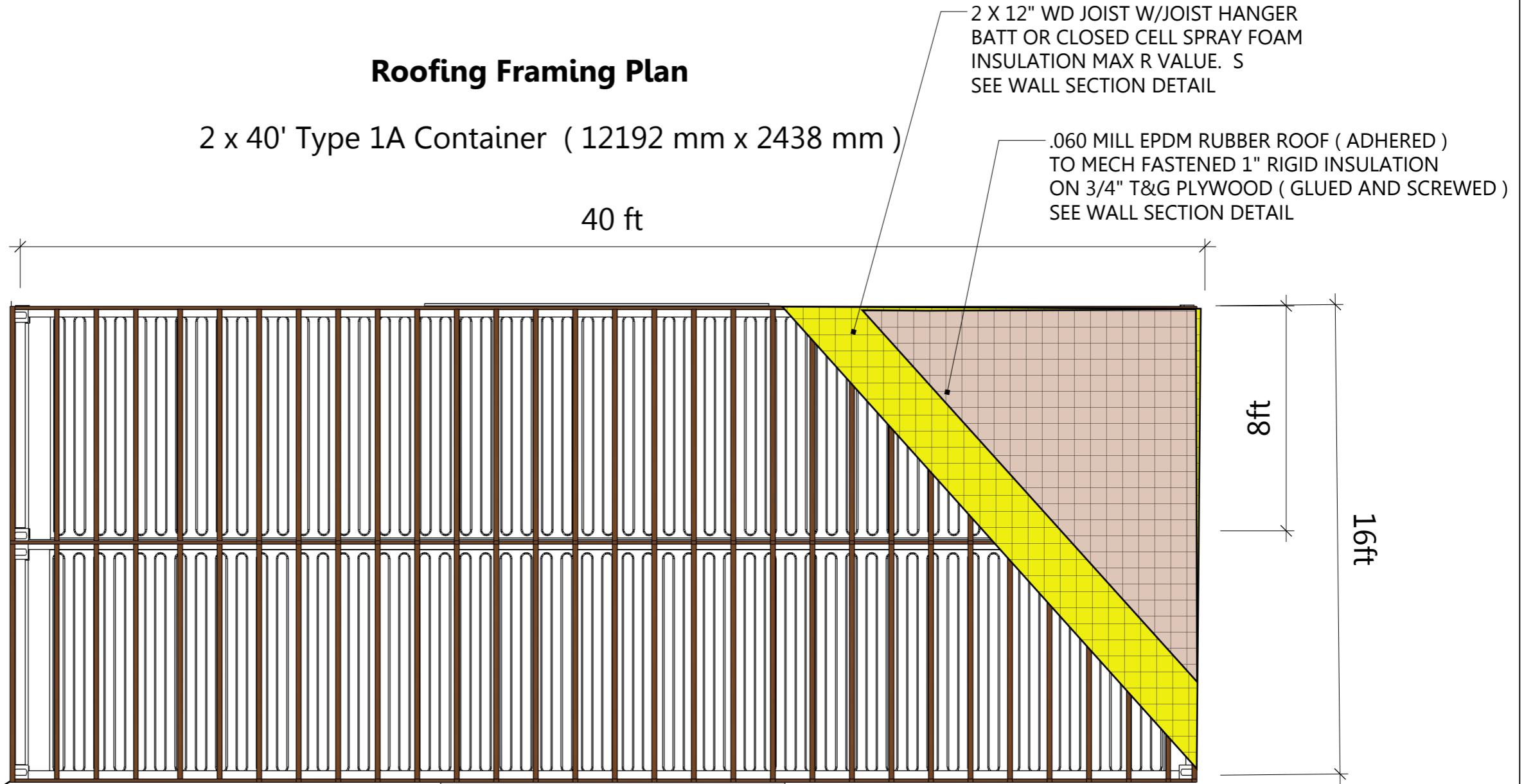
REVISIONS	
MM/DD/YY	REMARKS
1	---/---/--- ...
2	---/---/--- ...
3	---/---/--- ...
4	---/---/--- ...
5	---/---/--- ...

**CONCEPT PLAN**

Roofing Plans will always be Site and Environment Specific IE Subject to Loading Wind and Snow Loading etc

### Roofing Framing Plan

2 x 40' Type 1A Container ( 12192 mm x 2438 mm )



Roof Structure  
2" x 12" Wood Joists  
Spaced @ 16" O.C. Bearing on  
Container Rigid Frame.

Stiffen with Wood Bridging as Required

Secure every other Joist with  
Hurricane Straps to Container Rigid  
Frame w/ approved Tech Screws

Decking to be 3/4" T& G Plywood  
Glued Cont. and Screwed @ 16" O.C.

Covered with 0.60 Mill EPDM Rubber Roof  
to Mech Fastened 1" Rigid Insulation

2 x 40' Type 1A Single Container - Design 1

Roof Framing Plan

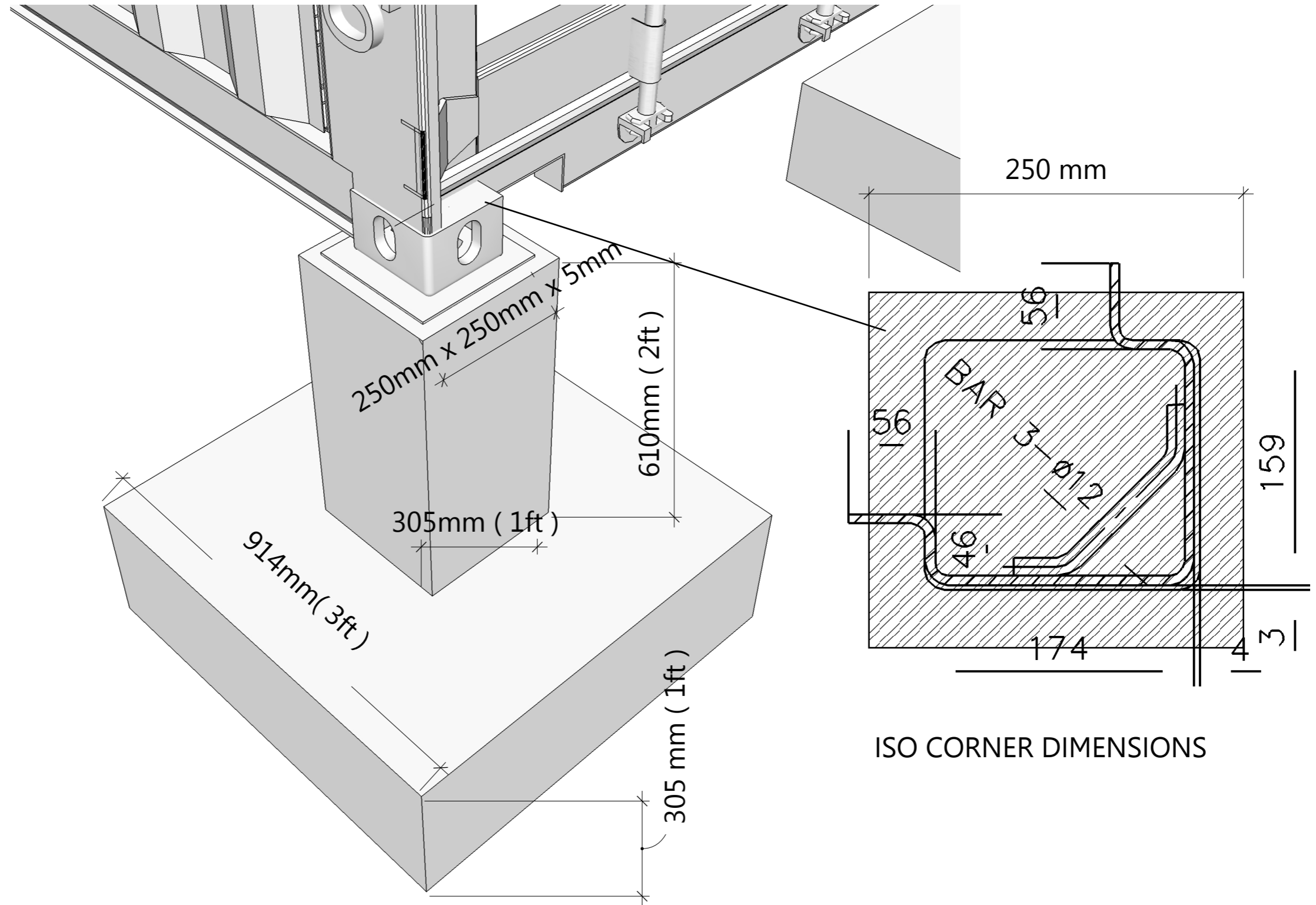
REVISIONS	
MM/DD/YY	REMARKS
1	---/---/--- ...
2	---/---/--- ...
3	---/---/--- ...
4	---/---/--- ...
5	---/---/--- ...

**CONCEPT PLAN**



### Corner Foundation Detail

Foundation Plans will always be Site Specific



ISO CORNER DIMENSIONS

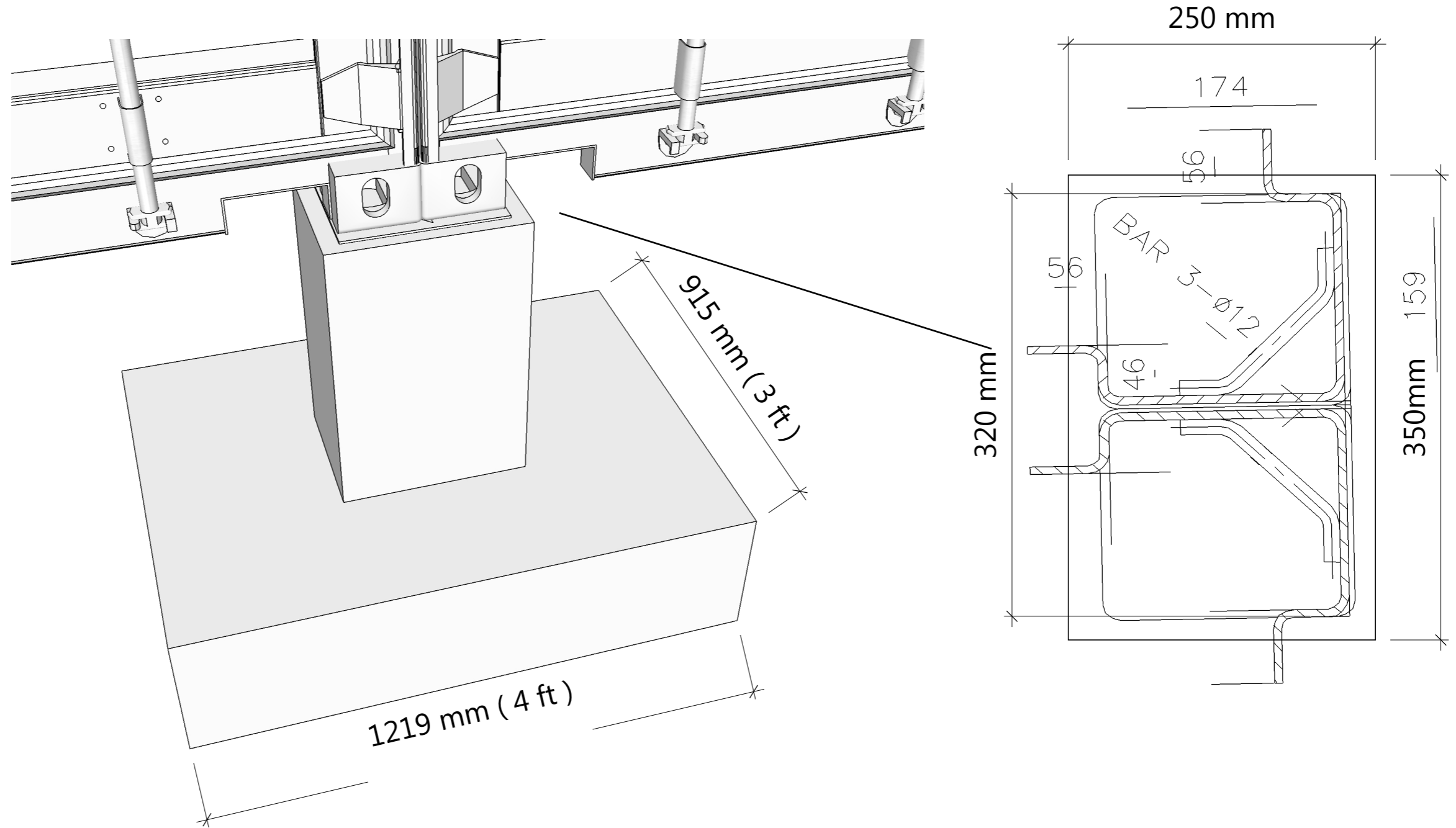
2 x 40' Type 1A High Cube Container - Design 1

Foundaton Detail

REVISIONS	
MM/DD/YY	REMARKS
1	...
2	...
3	<b>CONCEPT PLAN</b>
4	...
5	...

### Ajoined Container Foundation Detail

Foundation Plans will always be Site Specific

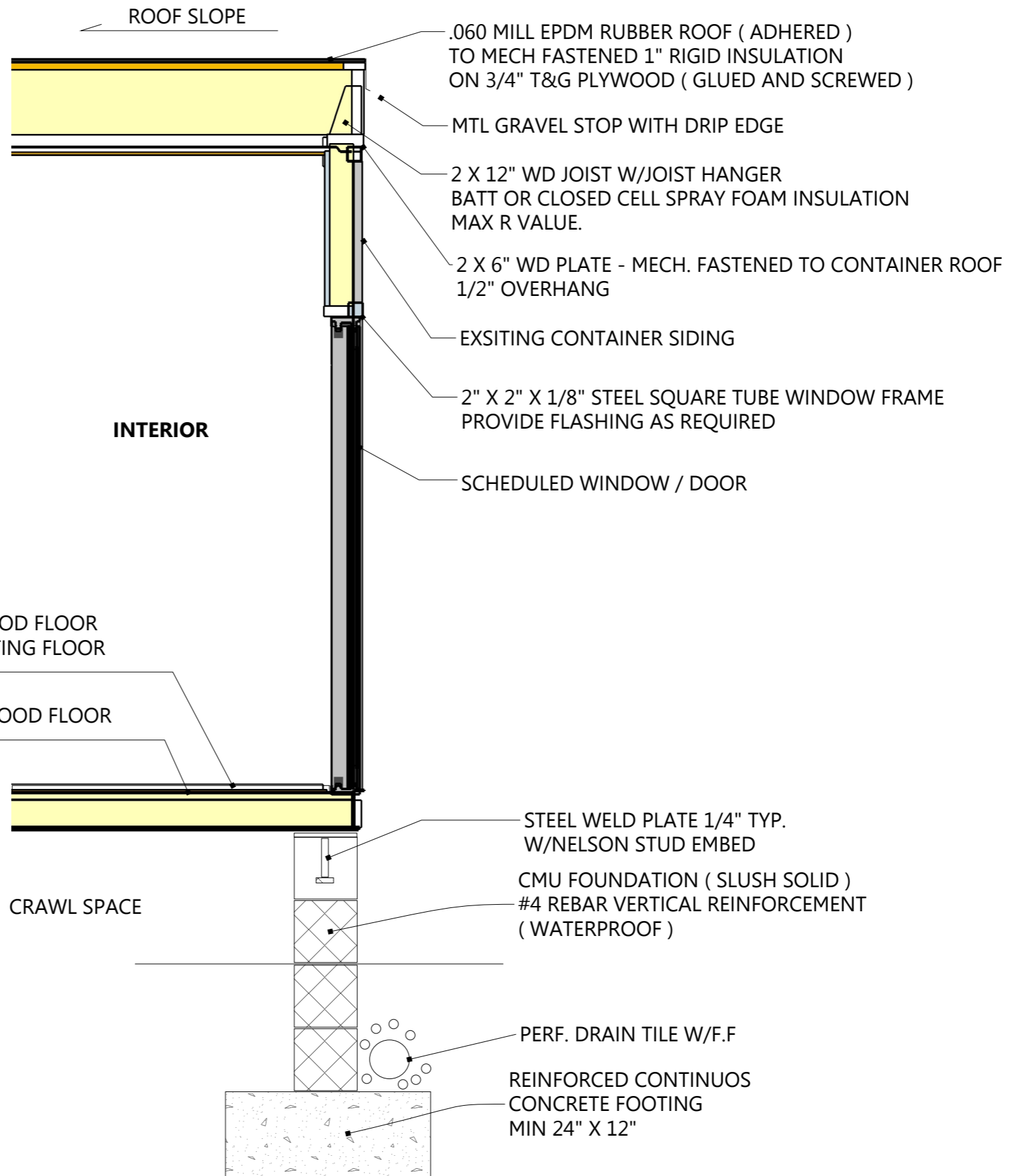


3 x 40' Type 1A High Cube Container - Design 1

Foundaton Plan

REVISIONS	
MM/DD/YY	REMARKS
1	... <b>CONCEPT PLAN</b>
2	...
3	...
4	...
5	...

A 06



3/4" T&G PLYWOOD FLOOR  
ON TOP OF EXISTING FLOOR

EXISTING PLYWOOD FLOOR

INTERIOR

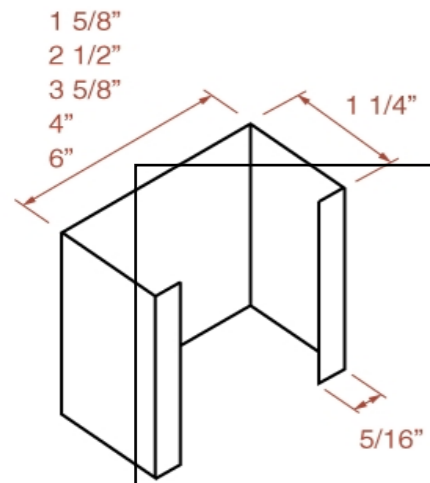
CRAWL SPACE

- .060 MILL EPDM RUBBER ROOF ( ADHERED )  
TO MECH FASTENED 1" RIGID INSULATION  
ON 3/4" T&G PLYWOOD ( GLUED AND SCREWED )
- MTL GRAVEL STOP WITH DRIP EDGE
- 2 X 12" WD JOIST W/JOIST HANGER  
BATT OR CLOSED CELL SPRAY FOAM INSULATION  
MAX R VALUE.
- 2 X 6" WD PLATE - MECH. FASTENED TO CONTAINER ROOF  
1/2" OVERHANG
- EXSITING CONTAINER SIDING
- 2" X 2" X 1/8" STEEL SQUARE TUBE WINDOW FRAME  
PROVIDE FLASHING AS REQUIRED
- SCHEDULED WINDOW / DOOR
- STEEL WELD PLATE 1/4" TYP.  
W/NELSON STUD EMBED
- CMU FOUNDATION ( SLUSH SOLID )  
#4 REBAR VERTICAL REINFORCEMENT  
( WATERPROOF )
- PERF. DRAIN TILE W/F.F
- REINFORCED CONTINUJOS  
CONCRETE FOOTING  
MIN 24" X 12"

REVISIONS

	MM/DD/YY	REMARKS
1	--/--/--	...
2	--/--/--	...
3	--/--/--	...
4	--/--/--	...
5	--/--/--	...





Steel Drywall Stud Typical  
 Web: 1-5/8", Flange: 1-1/4", Lip 5/16"  
 Alternative 2 x 4" Wooden Stud

DRYWALL 1/2" (12.5 MM) TYPICAL  
 EXISTING CONTAINER SIDE WALL

5 1/4"

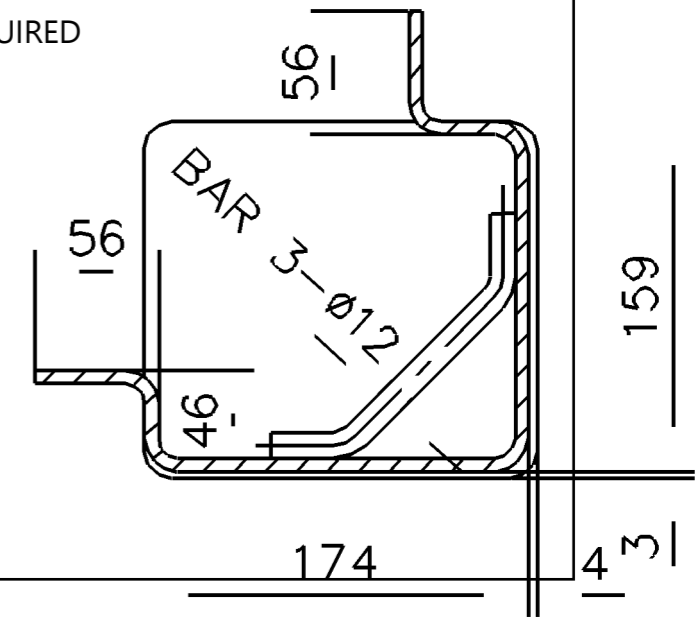
SCHEDULED WINDOW / DOOR

2" X 6" X 3/16" STEEL TUBING  
 WELDED TO CONTAINER END

CONCRETE FOUNDATION PIER  
 SIZING WILL BE SITE SPECIFIC

CONTAINERS WELDED B/T LOAD BEARING  
 CORNER BLOCKS AND TO EMBEDDED PLATE  
 ON FOUNDATION / PIER

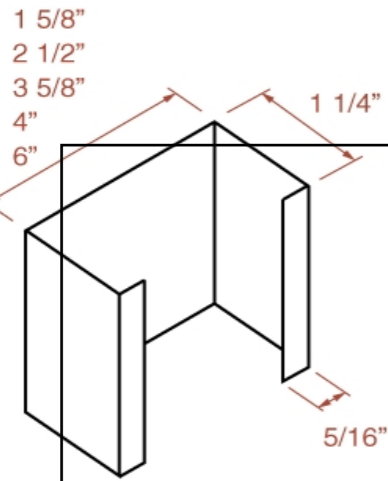
BLOCKING AS REQUIRED



**TYPICAL CONTAINER CONNECTION AT END WALL**

REVISIONS	
MM/DD/YY	REMARKS
1	...
2	...
3	...
4	...
5	...

**CONCEPT PLAN**

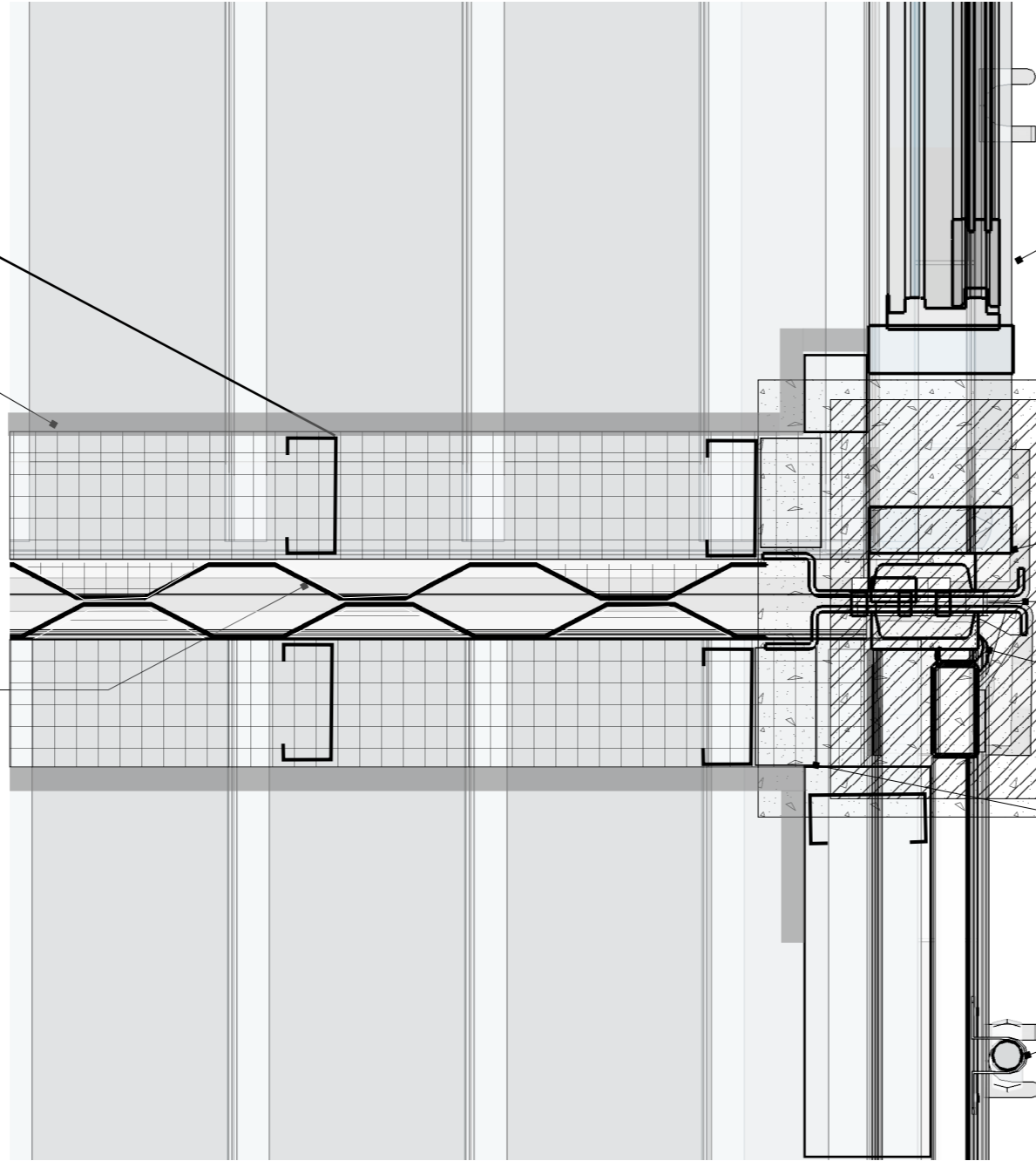


Steel Drywall Stud Typical  
 Web: 1-5/8", Flange: 1-1/4", Lip 5/16"  
 Alternative 2 x 4" Wooden Stud

DRYWALL 1/2" ( 12.5 MM ) TYPICAL

5 1/4"

EXISTING CONTAINER SIDE WALL



SCHEDULED WINDOW / DOOR

CONCRETE FOUNDATION PIER  
 SIZING WILL BE SITE SPECIFIC

2" X 6" X 3/16" STEEL TUBING  
 WELDED TO CONTAINER END

CONTAINERS WELDED B/T LOAD BEARING  
 CORNER BLOCKS AND TO EMBEDDED PLATE  
 ON FOUNDATION / PIER

CONTAINER DOOR GASKET

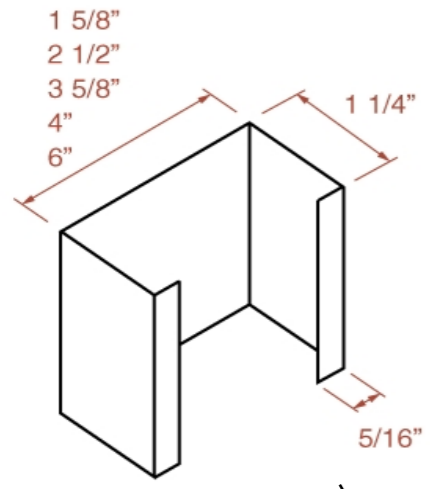
BLOCKING AS REQUIRED

DOOR LOCKING MECHANISM

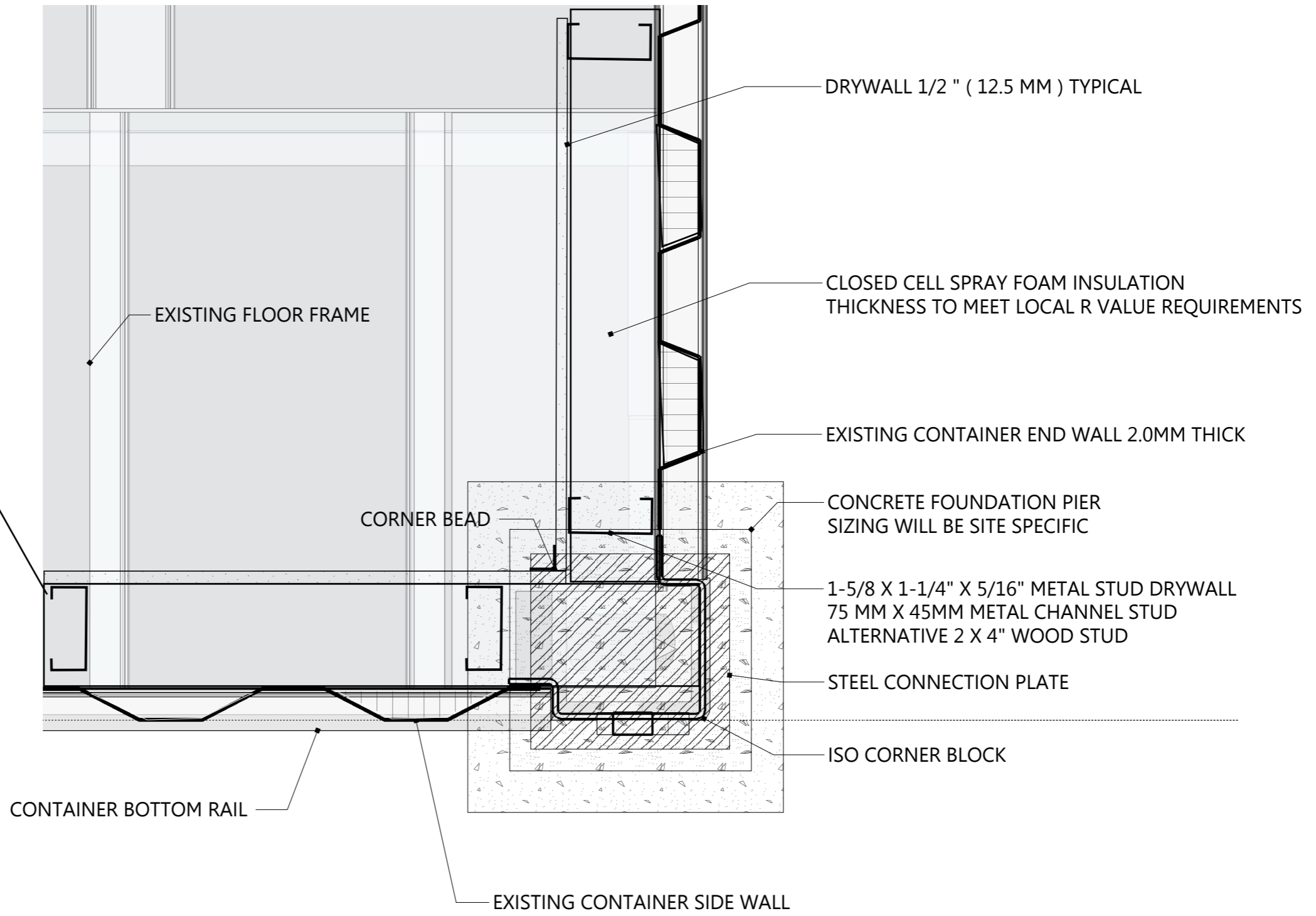
**TYPICAL CONTAINER CONNECTION AT DOOR END**

REVISIONS	
MM/DD/YY	REMARKS
1	---/---/--- ...
2	---/---/--- ...
3	---/---/--- ...
4	---/---/--- ...
5	---/---/--- ...

**CONCEPT PLAN**



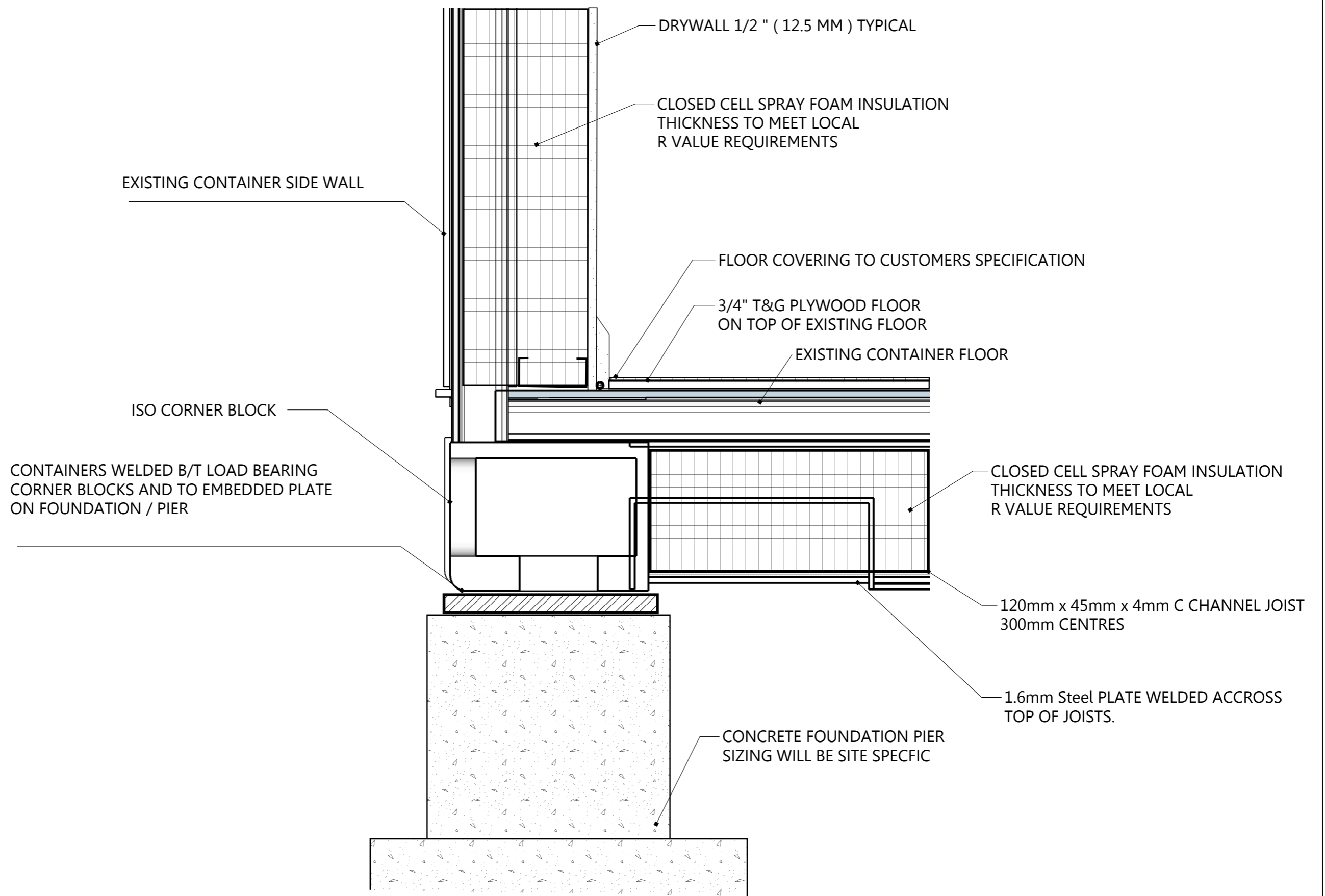
1-5/8 X 1-1/4" X 5/16" METAL STUD DRYWALL  
 75 MM X 45MM METAL CHANNEL STUD  
 ALTERNATIVE 2 X 4" WOOD STUD



**TYPICAL CONTAINER CORNER PLAN DETAIL**

REVISIONS	
MM/DD/YY	REMARKS
1	---/---/--- ...
2	---/---/--- ...
3	---/---/--- ...
4	---/---/--- ...
5	---/---/--- ...

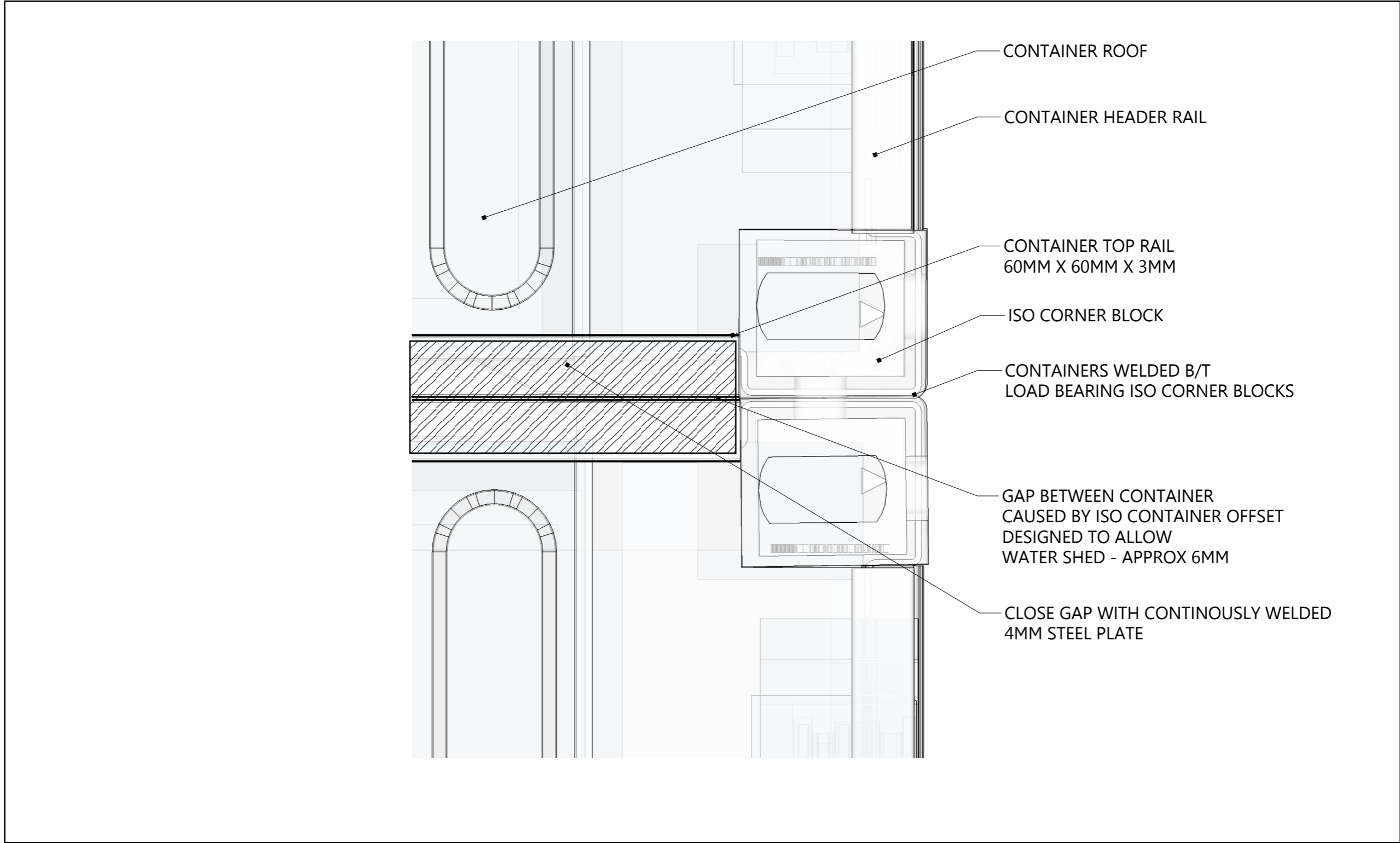
**CONCEPT PLAN**



**FLOOR EDGE DETAIL**

REVISIONS	
MM/DD/YY	REMARKS
1	...
2	...
3	...
4	...
5	...

**CONCEPT PLAN**



**ROOF CONNECTION DETAIL**

REVISIONS	
MM/DD/YY	REMARKS
1	---/---/--- ...
2	---/---/--- ...
3	---/---/--- ...
4	---/---/--- ...
5	---/---/--- ...

**CONCEPT PLAN**