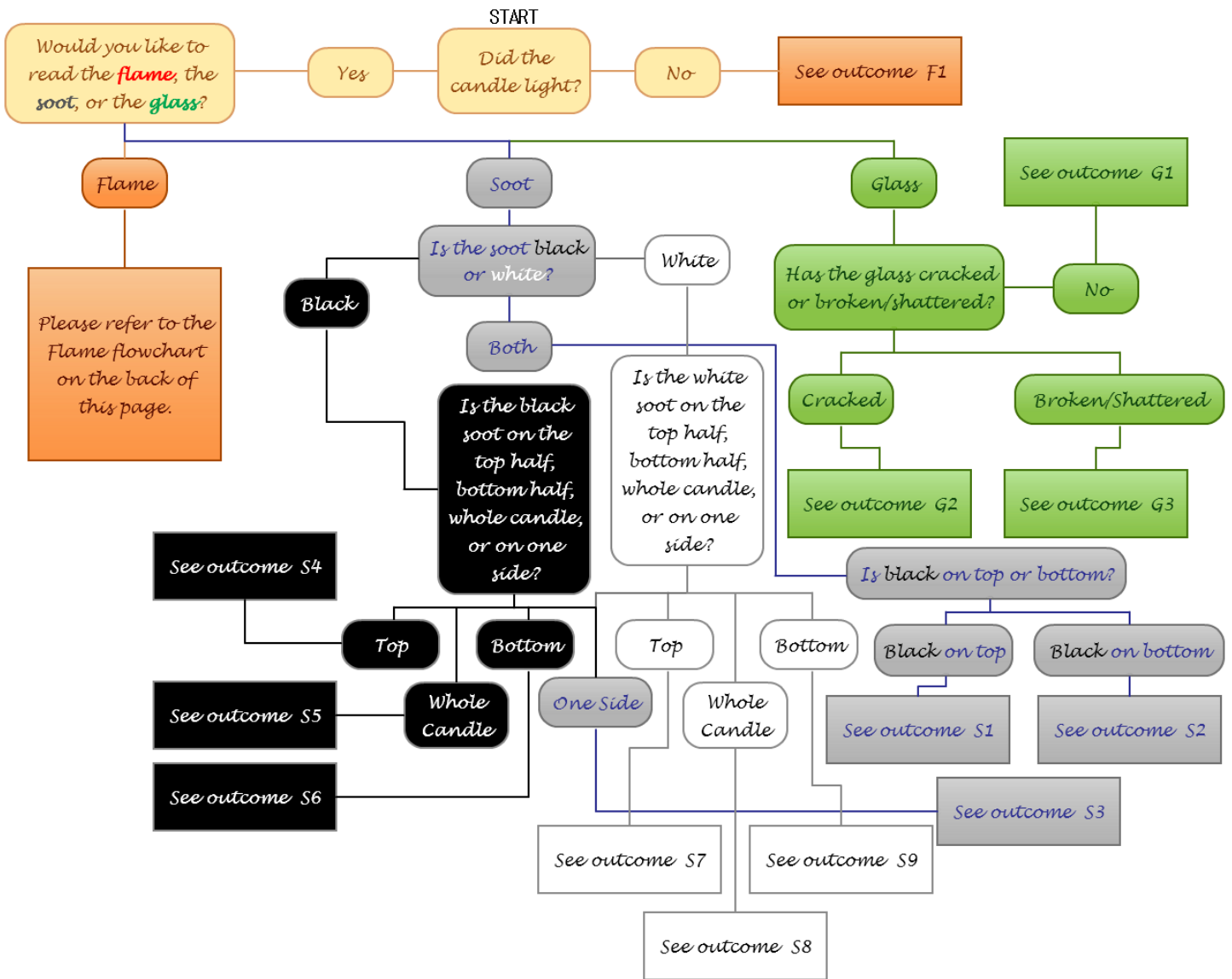


Candle Reading Flow Chart



Candle Reading Flow Chart



Candle Reading Flow Chart

Outcome Key

Flame

F1	<i>Candle does not light: means that this type of working will not work for what you need and that another type of spell should be used</i>
F2	<i>Candle lights and splits into two or more flames: indicates the presence of others (spirits, deities, or human) getting involved; look to the rest of the candle (soot, color, etc.) to interpret whether this person is good or bad</i>
F3	<i>Flame splits into two flames and work is to attract a lover: if the second flame seems to rise out of the wax, your working will be successful, especially if both flames grow into one large flame</i>
F4	<i>Flame splits into two flames and work is to split up a couple: if both flames stay lit, the couple will stay together</i>
F5	<i>Flame pops while flickering: a spirit is trying to communicate with you; open yourself up to it</i>
F6	<i>Flame makes a crackling or popping sound: indicates conversation; either the spirits are trying to talk to you or the target is talking about you; look to the purpose of the candle and the other actions of the flame to determine which is which</i>
F7	<i>Candle flame flickers: there is a spirit around</i>
F8	<i>Devotional candle flame is flickering: means you are in contact with your deity and any prayers or petitions will be heard</i>
F9	<i>Candle flame is low: means there is a strong opposing spiritual force and a cleansing and/or banishing may be needed</i>
F10	<i>Entire top of the candle catches fire: means all the resources of the prepared candle are being used due to spiritual influences creating obstacles; look into other signs to see if the candle was successful. Also, be careful. That's a lot of fire.</i>
F11	<i>Candle flame is high: means there is a lot of power behind the spell and little resistance</i>

<i>F12</i>	<i>Candle flame burns high and calm, producing no soot: you are in the presence of a larger entity or guardian spirit, most likely benevolent; there to listen or aid you</i>
<i>F12.5</i>	<i>Candle flame is high and aggressive, flickering in large strokes: similar to F12, but these entities tend to be darker spirits and deities; both are there to listen or aid you</i>
<i>F13</i>	<i>Flame goes out while burning: means the spirits cannot help you and the answer you seek is already determined; can also happen if you unexpectedly get the result/coming to fruition before the candle finishes</i>
<i>F14</i>	<i>Attempted to blow out the flame and it does not go out/flickers back on: means the spirit does not want you to extinguish it; let the spirit complete its work; something important may be in the works that you do not want to interrupt. However, if you are uncomfortable, ask the spirit to protect the candle or ask for permission and try to extinguish it again</i>

Soot

Black Soot: sign of negativity and witchcraft

White Soot: can indicate spiritual communication, purity, and exorcism; could indicate that the spirits have heard your prayers and removed the negativity from the workings; especially true in unhexing rituals

<i>S1</i>	<i>Black soot on top half, white soot on bottom half: something was in your way but the spirits have cleared it</i>
<i>S2</i>	<i>White soot on top half, black soot on bottom half: the spirits of another have combated your attempts</i>
<i>S3</i>	<i>Soot is only on one side of the candle: what you're doing is incorrect (ex. candle fixing wasn't appropriate, or the spirits aren't happy with the candle itself)</i>
<i>S4</i>	<i>Black soot does not travel all the way down the glass (at top, stops in middle): a negative influence/obstacle has been unblocked; something was in your way but is now gone</i>

<i>S5</i>	<i>Black soot goes down the entire length of the candle/glass: try again; something's in your way; your working has been blocked. It could also indicate someone has casted against you or has significant spiritual protection. If this is the case, just try again to break through defenses.</i>
<i>S6</i>	<i>Black soot is at the bottom of the candle: a warning that negative influences are being sent to you; this can be the case when someone casts against you</i>
<i>S7</i>	<i>White soot goes halfway down or less: the cleansing was successful</i>
<i>S8</i>	<i>White soot is carried through the length of the candle/glass: you may need further cleansing and spiritual work</i>
<i>S9</i>	<i>White soot is at the bottom of the candle: signifies the presence of outside aid or help, either spiritually or physically</i>

Glass

<i>G1</i>	<i>Glass does not break or shatter: means the spell is protected and was successfully defended</i>
<i>G2</i>	<i>Glass cracks but does not break: means there was some type of opposition that was broken; it may have been sent to the spell to try and deflect it or it may have been encountered along the way</i>
<i>G3</i>	<i>Glass breaks or shatters: means you are up against something larger than yourself; malicious forces have either protected your target or have been attracted to your working and are trying to interfere; can also indicate that someone is casting against you and you are not spiritually protected or strong enough, as what was thrown at you was larger than what you were sending out. Either way, do a stronger working and light another candle to try and combat it.</i>

Other

Candle preparations: appropriate/applicable herbs and oils used in charging a spell/working (Please see Herbs page for more info)

PI	<i>If the preparations do not collect along the glass as the candle burns but remain pooled together: means all the resources are needed and will burn at the end of the candle; soot, flame, and glass should be read for the outcome to see if the working was successful</i>
-----------	---



Candle Magic Notes

- *Infuse your intent and energy into the candle. This can be done by preparing your candle by carving symbols and sigils that pertain to the spell you're doing, using herbs and oils to give power to your spell*
- *Read the glass as the candle burns (see flow chart)*
- *When doing candle magic, be sure to let your candle burn out completely. Be safe about this! When the candle is getting low, let it finish burning out somewhere safe such as a sink, bathtub, bowl of water, bowl of sand, etc.*
- *If you have to put out the candle, do **NOT** blow it out! Blowing out the candle mean that you are blowing away your intent. Instead, snuff out the candle to save it for later.*
 - ❖ *Blow out = Goodbye*
 - ❖ *Snuff out = Save for later*
- *Certain aspects of candle magic are best done on a certain day of the week (Please refer to the Days of the Week page for the type of effects on each day)*
- *You don't have to incorporate herbs with every candle, but you can*
- *Figure Candles: candles that have been carved/molded into a particular form/shape (ex. male/female figure, skull, flower, etc.)*
- *Skull Candles: good for influence, communication, dreams (ex. getting your boss to think of you so you can get a promotion)*
- *Anchoring: if you don't have a certain figure candle on hand, but you have something in the shape of the figure that is safe to burn on top of, you can anchor the candle on top of it and let it burn down (ex. putting a white candle on top of a ceramic skull since they had no skull candles)*
- *Uncrossing: a type of candle working used to remove muck, obstacles, issues, stagnant things, and to bring about clarity*
- *After dressing your candles with the proper oils, you can also add glitter! But you don't have to, but it can boost your sigils by making them more visible*



- *Build your herbs in regard to your spell from the bottom up (first part of the spell at the bottom)*
- *Dressing the candle with oil:*
 - ❖ *Most common oil used is olive oil, sacred to Apollo*
 - ❖ *One of the original oils used in magic*
 - ❖ *Used for rituals, magic, and blessings before it became a cooking oil*
- *To bring stuff toward you/draw in the intent, rub the oil in a direction pulling toward you (top of the candle to bottom)*
- *To banish stuff away in the intent, rub the oil in a direction away from you (bottom of the candle to the top)*
- *While dressing a candle with oil, focus on your intent as you do so, rubbing it over your carvings*
- *Spitting in the bottom of your container can activate your spell, give it an extra oomf, and an essence of you*
- *Symbols/sigils don't necessarily have to be carved into the candle. You can draw them on with eyeliner!*

