

BRIDGESTONE weller **GOOD YEAR** MONROE **LEDA** **SPAX** **GRAYSTON** **LUKE BILSTEIN**
PIRELLI wheels **BBS** **1992** **LEDA** SUSPENSION LTD **SPAX** **GRAYSTON**

COLWAY
BFGoodrich
YOKOHAMA
COMPACTIVE

SPARCO
SIMPSON
225
BELL
RECARO
SABELT

demon tweeks

THE HOME OF RACE, RALLY, ROAD ACCESSORIES AND EQUIPMENT



Valeo
CIBIE

ANSA
JANSPEED

Lucas

PECO

112 PAGES
 FULL COLOUR
 £2

Safety Devices

Rollcentre Magard **TERRATRIP** **lifeline** **Micro DYNAMICS** **Halda**
K&N **KENT CAMS** **PELLTOR** **PACET** **Castrol** **MINTEX** **BOX** **FERODO**

SPARCO is getting more and more popular in the F1 world. Sparco fireproof racewear and tyre warmers are used by 10 teams and 18 drivers. SPARCO customers in F1 1991 World Championship.

Teams:
Alesi
Barron
Coloni
Ferrari
Fondmetal
Footwork
Leyton House
M. Guglielmi
S. Johansson
N. Larini
N. Mansell
P. L. Matrai
G. Montabelli
R. Moreno
R. Pastor
A. Piquet
A. Prost
S. Schumacher
G. Tarquini



1. 112 Sparco 2. 2 Layer Nomex Box quilt, Red or Royal Blue
FIA approved £297.84
2. Also available in Yellow, Green, Gray and Navy Blue
FIA approved £314.34
3. 112L Sparco 2. As above but triple layer Nomex, available in Shiny White only FIA Approved £337.70



£314.34



17. NEW Shortalliance T-Shirts S, M, L, XL £6.50

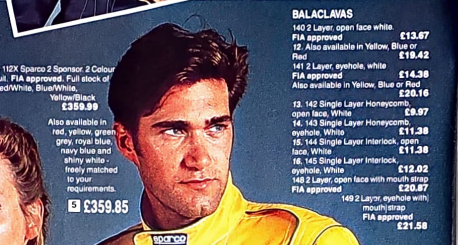
PAGE
4
RACEWEAR



CLUB COMPETITOR
£67.64
SPECIAL

4. 109 Racer inexpensive single layer. In Nomex. S to XXL. Dark Blue with yellow stripes. Does not conform to FIA regulations but does meet BS2091 £87.64
110 Base Single layer in Nomex 3. Does not conform to FIA regulations. Available in Cream White, Red, Blue or Navy Blue £103.58

5. 102X Sparco 2 Sponsor 2 Colour suit. FIA approved. Full stock of Red/White, Blue/White, Yellow/Black £359.99



£359.95



SOCKS FIA Approved
151 Ankle sock, White, S, M, L, XL per pair £3.50
152 Calf Sock, White, S, M, L per pair £10.50



13. £9.97
14. £9.97
15. £9.97
16. £9.97

TO ORDER
TEL: 0829 70625
FAX: 0829 71002
CARRIAGE
NEXT DAY £6.50
48 HRS £4.50
POST £4.00
UK CUSTOMERS MUST ADD VAT TO ALL PRICES

UNDERWEAR
6. 175 Honeycomb Top, White, sizes S, M, L. FIA approved £273.93
7. 176P Honeycomb bottom, White, sizes S, M, L £21.40
8. 175 Interlock top, White, sizes S, M, L. FIA approved £31.14
9. 176P Interlock bottom, White. Sizes S, M, L £23.96
10. 176 Top also available in Yellow. Flee or Blue S, M, L. FIA approved £44.12
179 Nomex T. Shirt (one size) White £27.90
H. 179 Nomex T. Shirt (one size) Yellow, Blue or Red £38.94

BALACLAVAS
140 2 Layer, open face white. FIA approved £137.67
12. Also available in Yellow, Blue or Red £19.42
14 1/2 Layer, openhole, white FIA approved £14.38
Also available in Yellow, Blue or Red £20.16
13. 142 Single Layer Honeycomb open face, White £9.97
14. 143 Single Layer Honeycomb openhole, White £11.39
15. 144 Single Layer Interlock, open face, White £11.39
16. 145 Single Layer Interlock, openhole, White £12.02
143 1/2 Layer, open face with mouth strap FIA approved £20.87
149 2 Layer, openhole, mouth strap FIA approved £21.58



1. £11.39
2. £11.39
3. £11.39
4. £11.39
5. £11.39
6. £11.39
7. £11.39
8. £11.39
9. £11.39
10. £11.39
11. £11.39
12. £11.39



18. 232X Superlock. Two colour model with diagonal cut. All the above listed colours matched as per customer requirements £145.68



19. £145.68
20. £85.68

KARTING RACEWEAR & ACCESSORIES
Sparco Karting Racewear is very well known worldwide for the excellent features of the highly resistant fabric used specially manufactured for this special application. Many try to copy the 'Sparco Style' but nobody is able to achieve the safety of the Sparco range. The range is now very large to meet most customers requirements and includes six different models with a wide choice of colours available. All suits are double layer which includes a cotton lining for maximum comfort



21. NEW 234 Jasio Kart Suit Two colour available: Top White Bottom Blue Blue White Red Orange Grass Green Navy Blue £151.94
22. NEW 235 Futura Kart Suit Due early 1992. Price for price.



23. NEW 239 Rain Kart Suit Due early 1992. Price for price.



24. NEW 239 Rain Kart Suit Due early 1992. Price for price.

PAGE
5
RACEWEAR

Kart suits available in sizes 28" to 48" However, we can offer a made to measure service at the extra charge of per suit £42.00
ALL KART SUITS CUP APPROVED
WARNING
The fabric used for the karting suits is not fire resistant therefore they must not be used where danger of fire exists.
231 Kart Racing Suit, Red or Blue £123.06
20. 231X Two colour suit. All the following colour combinations are per customer requirements. Red blue white, yellow navy blue grass green, Miami green £132.37

TO ORDER
TEL: 0829 70625
FAX: 0829 71002
CARRIAGE
NEXT DAY £6.50
48 HRS £4.50
POST £4.00
UK CUSTOMERS MUST ADD VAT TO ALL PRICES

NEW
KARTING ACCESSORIES
24. 241 Plus Protection Vest. Three available sizes Small or Large £36.64
Aluminum sleeve arm heat protection.
Karting seats - see pages 12/13 £3.72

SPARCO

Available in Red only, made from hardware protecting, features include 1 chest flap pocket, 2 hip pockets, elasticated cuffs, open ankles, available in Red only w/wo stripes and Pirelli logo

2. DEMON TWEETS WET SUIT

Designed to flow normal contours or on top of mechanics overalls these waterproofs prove invaluable under wet racing or rallying conditions. These are the wet suits supplied to leading Grand Prix and Rally Teams and they can be supplied with your sponsor's or team's logo printed on them. Please phone for details and prices. Sizes: Small, Medium, Large and Extra Large. Available in Red or Blue £32.95

SUPPORT GEAR & RACEWEAR

PAGE 6



- NEW 5. DT Rugby Shirt Very High Quality, Red or Dark Blue Available in S, M, L, XL £16.95
- 7. DT RaceRally Team Coat, Tigh length padded jacket, drawing waist, raglan sleeve style. Slipped fastening on front flap covering zipper. Double entry pockets on outside with sluit fastening. Inside zippered pocket. DT logo on front and running man on back c/w hood "roll neck". Machine washable at max 40°. Cotton polyester outer fabric, polyester padding and lining £39.99
- 6. DT Team Cap - Black Cord £9.95
- 14. DT Polo Shirt Red c/w DT logo S, M, L, XL £9.95
- 11. DT T-Shirt Grey £5.95
- 10. DT Sweatshirt Grey £13.50
- 12. DT Sweatshirt Blue £13.50
- DT jogging Pants Blue £13.50
- 9. DT RaceRally Jacket, available in Small, Medium, Large or X-Large £38.00

demon tweets

- Childrens sizes now available 20/28 age 7-30/32 age 8-32/28 age 10-30/32 age 8-32.50
- 18. DT Ear Plugs in Canvas £1.00
- 19. DT Race Pops Ticket Holder £1.50
- 16. DT Window Screen Visors available in Red, Blue or Green £1.00
- 17. DT Window visor Red and Yellow £1.50
- DT Oblong sticker "DT The Answer" interior or exterior fixing £0.95
- 22. DT Helmet Visor Sticker £0.40
- 20. DT Large "Running Man" Sticker £0.85
- 21. DT Oblong Sticker £0.85
- 23. DT Oblong Sticker £0.85
- 21. DT "Running Man" Cloth Badge £0.95
- 21. DT Oblong Cloth Badge £0.95

CHILDRENS OVERALLS

AGE	CHEST	INSELE	LEGS
Red or Blue. Sizes from 2-15 yrs old	2/3 61	24	41
See chart below 2/3 Yrs	4/5 66	26	46
4/5 & 6/7 Yrs	£18.80 67 71	28	51
8/9 & 10/11 Yrs	£20.90 89 96	30	56
12/13 & 14/15 Yrs	£22.00 101 111	32	64
Vari Zero	12/13 84	33	64
	14/15 89	35	69



DEMON TWEETS SUPPORT GEAR

- 1. DT Umbrella Small £8.95 Large £11.50
- 3. DT Caps Red Logo "Running Man" £3.95
- 4. DT Cap Red Logo "DT The Answer" £3.95

PAGE 7 JAYBRAND PRODUCTS



Let Demon Tweets supply all your Jaybrand co-ordinated team clothing and easily PSYCHE the opposition. Jaybrand manufactures to your design or supply from their stock.



SPONSOR DRIVER SUITS

Illustrated are a selection of made to measure Professional wet weather layer Hobbes suits. These feature our twin small back and floating shoulder attachments for superior freedom. You benefit in a slick suit and we are pleased to quote for your business. Our stock range of suits includes C&K approved for Formula 1, Formula 2, approved for Formula 3, Protocore, Clubman (which also fits to the maximum of 65/65/65), 2 layer Nomex in hood/collar styles, the latter two being available in a variety of colours. The latter two suits also feature Protocore and high elasticated FIA incorporation. Price of suits varies according to: 1) Jacket and trousers only; 2) Jacket only; 3) Trousers only; 4) Hood/collar only; 5) Full suit. Price of suits varies according to: 1) Jacket and trousers only; 2) Jacket only; 3) Trousers only; 4) Hood/collar only; 5) Full suit.

1) Jacket and trousers only	£230.00
2) Jacket only	£234.00
3) Trousers only	£190.00
4) Hood/collar only	£100.00
5) Full suit	£324.00



CLUBMAN
An inexpensive Proban race suit with all the style and features of suits twice the price. Red (shown), Blue, Navy, Green, Grey or Navy £70.00
Navy £55.00



GLADIATOR Two layer Proban race suit, box quilted with contrast piping. High protection at a low cost. Colours as Delux £135.00



NEON KARTSUIT Super shiny and fluorescent Clk approved nylon suit, lowering lined padded and box quilted. Many colours available £116.00



LIVERIED SUITS We can embroider and produce any design, and would be pleased to quote. Prices from £100.00



PHOENIX 2 (Shown here in green) FIA approved two layer Nomex race suit, box quilted and piped in contrasting colours. Available in Red, Blue, Navy, Yellow, Green, Grey and more. £235.00



PHOENIX CUSTOM Same spec as Phoenix 2 but in any two colour combinations. Shown Red/Ecu £280.00

RACESUITS...KARTSUITS... MECHANICS... SOCKS...BAGS... BOOTS...BALACLAVAS...KIT BAGS... UNDERWEAR... EMBROIDERY



EMBROIDERY

This is now a major part of Jaybrand's business. They currently have three Buradan computerised embroidery machines. They are able to produce your logo or embroider from their own fonts depending upon your requirements. The professionalism of the whole team can be improved by embroidered corporate identity. Please send your design for quotation. Most garments can be embroidered whether Jaybrand supply them or not. They can offer all types of embroidery - sponsor logos, name badges, blood group badges. Please contact us with all your requirements for quotation.

For example: Name and Blood Group Badge £9.50

MECHANICS OVERALLS

Sponsor mechanics overalls can be manufactured to match drivers suits in corporate colours and we keep a large stock of professional and clubman styles. Sponsor overalls to quotation only Professional Clubman £42.50 Professional Clubman Proban. This meets BS2491 and is recommended by the RAC as the minimum requirement for all refuelling areas in both rallying and racing. £27.00



Polo shirt - most colours £12.50
Sweat shirt - most colours £12.50
Woven team shirt. Pilot style plain white £12.50

Woven team shirt. White with royal blue yoke and inside collar. £30.00
Woven team shirt. White with navy blue yoke and inside collar. £30.00
Woven team shirt. White with red yoke and inside collar. £30.00
Twin pleat style trousers. Red, navy or royal £30.00
Twin pleat style shorts. Red, navy or royal £25.00

TO ORDER TEL: 0829 70625 FAX: 0829 71002

CARRIAGE NEXT DAY £5.50 48 HRS £4.50 POST £4.00

UK CUSTOMERS MUST ADD VAT TO ALL PRICES

WINNERS OF THE 1991 CLOTHES SHOW NEW BUSINESS EXPORT AWARD

TO ORDER TEL: 0829 70625 FAX: 0829 71002

CARRIAGE NEXT DAY £5.50 48 HRS £4.50 POST £4.00

UK CUSTOMERS MUST ADD VAT TO ALL PRICES

mechanics meet the latest RAC for 1992 (BS 6249). Two and layer Nomex suits meet FIA and are homologated. Kart suits flameproof but comply to Clk nation.

SPARCO RACEBOOTS

FIA Approved
Produced with almost care according to the latest F.I.A. rules. Now even the laces are fire-resistant. All models feature an inside Nomex lining and have lately been improved in the sole, which is now more resistant to pedal contact.

1. 123 CLASSIC. Traditional driving shoes, low-top. Available in Black leather only. Sizes 5-11. **£56.68**
2. 124 TOP DRIVER. The best selling high-top boot. Available in Blue, Red or Grey. Sizes 6-11. **£73.83**

3. 125 MIRAGE. The new boot for 1991. Red with Silver arrow. Sizes 6-10. **£78.87**
4. NEW 127 Racing low-cut version of very popular 'Top Driver'. Available in blue or red suede. Sizes 5-11. **£62.94**
5. PUMA suede leather high-cut boot available in red or blue. Sizes 6-12. **£95.00**

CLUB COMPETITOR
£135.00
SPECIAL



YES! HELMETS BY SPARCO
£175.00
SPECIAL

A new range of YES helmets which pass the British Standard BS6658 type 1. (Fireproof lined, conforms to latest FIA reg.)

6. 331 PRO RACING FULL FACE. Fibreglass reinforced with Kevlar. The visor (Homologated according to British Standard) can be ordered separately. Inside layer in Nomex. A designed for easy installation of the Milton FIA Approved. **£185.00**

7. 335 PRO JET OPEN FACE. Helmet with anti-dazzling peak. Inside layer in Nomex. FIA Approved. **£175.00**

All helmets available in 4 sizes

324 VISOR. Clear **£22.90**
Tint **£26.19**
325 Peak for Pro Jet **£18.45**

8
BOOTS & GLOVES

SPARCO



£73.83



£64.68



£62.94



£95.00

TO ORDER
TEL: 0829 70625
FAX: 0829 711022
CARRIAGE
NEXT DAY £5.50
48 HRS £4.50
POST £4.00
UK CUSTOMERS MUST
ADD VAT TO ALL PRICES

SPARCO RACE & RALLY
GLOVES



£41.01

SPARCO RACE & RALLY
GLOVES
FIRE RESISTANT
Nomex FIA Homologation Rules. The SPARCO gloves comply with the strict FIA Homologation Rules. The length of all models fully cover the wrist and all have a double layer of cut-resistant Nomex fabric. The sewing stitches in Nomex material and the threads are cut out of Nomex fabric. Each glove carries the full compliance with the regulations and each model is registered at F.I.A. Paris. The wide availability means that you should be able to supply your stock to suit the individual's needs.

GLOVES FIA Approved
6. 133 TOP Single layer Nomex glove with Grey leather palm. Available in Red or Blue. **£26.43**
9. 139 PROFI. Glove extra padding on palms and forefinger. (Grey suede). Available in Red, Blue or Yellow. **£38.82**
10. 131 INDY. Gauntlet suited for single seater drivers. Extra padding on palms and knuckles. Available in Red only. **£41.01**
11. 138 RACING. Long Gauntlet with black leather palms and inserts along fingers. Available in Red or Blue. **£39.42**

All above gloves available in sizes small, medium or large



CLUB COMPETITOR
£59.40
SPECIAL



NEW BOOTS
17. High Cut Race Boots. Suede Leather. Nomex Lined, padded insoles, sun grip sole. Sizes 6-12. **£56.40**
18. Low Cut Race Boots. Suede Leather, sun grip sole. Available in blue/red Sizes 2-5. Vel Zero **£39.00**
Achilles 6-12. **£48.00**

CLUB COMPETITOR
£49.00
SPECIAL

DIADORA
19. Racing boots, red or blue. Sizes 6 1/2 - 12. **£50.00**
20. Knee pads, red or blue **£14.00**
21. Elbow pads, red or blue **£14.00**

21. SPARCO SERVICE OVERALLS
Red chr reflection stripe sizes S, M, L, XL. **£56.00**

9
BOOTS & GLOVES

WORK GLOVES
12. 210 Work gloves. Sparco mechanics specialized gloves. Long type, cut and heel resistant, natural colour. **£5.57**
13. 207 Cotton work gloves, natural colour. Short. **£3.50**
14. 205 Flee. Heat and oil resistant gloves in Kevlar and wool. Ideal for hot exhausts and turbo's, super protection. **£24.04**
15. 209 Set of 2 aluminum sleeves offering a strong resistance to fire and heat. To be used with 205 glove for maximum protection. **£45.79**
16. 208 Sparco cotton work gloves (long) type, available in Red or Green. **£48.80**

All Sparco work gloves available in one universal size only



CLUB COMPETITOR
£26.43
SPECIAL

£39.42

£4.80

£5.57

£24.04

13
£45.79

£3.50



SPARCO WORKSHOP OVERALLS
Ref. 203 Available in Red, Blue or Green. Superior quality finished in heavy cotton, velour cuffs and ankles, 2 chest and hip pockets. Sizes S, M, L, XL. **£49.36**



£55.00

TO ORDER
TEL: 0829 70625
FAX: 0829 711022
CARRIAGE
NEXT DAY £5.50
48 HRS £4.50
POST £4.00
UK CUSTOMERS MUST
ADD VAT TO ALL PRICES

PAGE
10
HELMETS & ACCESSORIES



Snell SA Certified
A superb range of top quality helmets from the world's largest helmet manufacturer as worn by leading formula one drivers such as Prost, Alesi and Schumacher.
1. GRV
An exceptionally strong and light helmet with a narrow aperture, constructed from carbon fibre, kevlar and fibre-glass. Nomex lined, white only. Sizes XS to XL.
GRV Full Face * £395.00

1. **£395.00**
2. **£240.00**

2. **£240.00**
3. **£240.00**
4. **£165.00**

5. **£310.00**
6. **£250.00**

7. **£240.00**

8. **£190.00**

9. **£165.00**

10. **£210.00**
11. **£190.00**

12. **£300.00**
13. **£250.00**
14. **£210.00**
15. **£220.00**
16. **£190.00**

HELMET ACCESSORIES

BELL
XFMI Visor clear or smoke tinted £32.00
XFMI Visor clear or smoke tinted £32.00
XFMI Anti-Fog Clear or smoke tinted £40.00
Vorvor Visor Anti-Fog Clear or smoke tinted £45.00
M2 RS, Sparo RS, Race Star III Visor clear or smoke tinted £26.00
Rip-Offs, state helmet £8.00
Mag 4 SR Pro Peak £24.00
Pivo Kit, state helmet £8.00
Pivo Kit, Helagonal Key £7.00
Goggles suit Mag 4 SR Pro £28.00

SNELL SA CERTIFIED

4. XFMI Kevalor Pro Series 2000 Full Face * £318.40
NEW Vortex Kevalor Pro Series 2000 Full Face, as used by Nelson Piquet £277.40
6. Mag 4 Kevalor Pro Series 2000 Open Face * £250.00
Mag 4 Fibreglass Open Face * £172.85
7. Sparo RS Fibreglass Full Face £240.00
8. Race Star III Fibreglass Full Face £190.00

TO ORDER
TEL: 0829 70625
FAX: 0829 71002
CARRIAGE
NEXT DAY £5.50
48 HRS £4.50
POST £4.00
UK CUSTOMERS MUST
ADD VAT TO ALL PRICES



SIMPSON
Snell SA Certified
9. LX4 Full Face * £300.00
RX5 Full Face * £250.00
Bandit 4 Full Face * £210.00
10. Bandit 5 Full Face * £220.00
Voyager 4 Full Face * £190.00
11. Voyager 5 Full Face * £190.00



TOP TEC BS66558-BSIA
15. Tempest Full Face Zero VAT * £81.50
16. Spectra Open Face Zero VAT * £80.85
Spectra Open Face Zero VAT * £97.50



BILSON EAR DEFENDERS
Lotion £4.25
Blue £6.50
Comfort £9.75
Com-impact £76.00



17. NECK SUPPORTS
Nomex covered neck support foam supports the helmet under high G forces to reduce whiplash.
Blue £55.00
OMP red, blue or black £39.00
Simpson, red or blue £36.00
Total, red, blue or black £29.25
Sparo, red, blue or black £19.95
Sparo, red, blue or black £25.00

HELMET RESTRAINTS
Simpson, blue £10.00
Total, black or white £11.95

HELMETKIT BAGS, HELMET BOXES
18. DT Cloth Helmet Sack various colours £5.95
19. Bell Helmet Bag padded £36.00
Simpson Helmet Bag £32.00
20. OMP Ki Bag takes all kit and helmet £32.95
21. Sparco (1632) Ki Bag very large will take 2 x 6 & 6 helmet, yellow and blue £29.96
22. Sparco (1651) Ki Bag takes all kit and helmet, blue and green £31.52
23. Sparco (1650) Co Drivers small shoulder bag, blue and green £33.45
24. Sparco (1656) Pro Co Drivers Bag blue and green £44.39
DT Single Helmet Foam Box £15.25
DT Double Helmet Foam Box £19.00
Sparco Universal Double Helmet Box, red, blue or black £43.28
Sparco Fireproof Double Helmet Box set £63.06

WINDOW HETS

OMP various colours £25.00
Simpson blue £35.00
25. Total any colours from example shown £24.95

All helmets meet RAC specifications All helmets available in full range of sizes.
All Fire Resistant Helmets meet FIA Specifications

1. DUNLOP/GOODYEAR HISTORIC OVERALLS
Authentic reproductions using modern materials but cut to original patterns.
Single Layer Nomex * £167.00
Two Layer Nomex conforms to latest 92 FIA regs * £287.00
Both suits are available in pale blue with Dunlop badge and stripes or white with Goodyear badges and stripes. Same design as used by such luminaries as Harry Schell, Jean Behra, Stirling Moss, Graham Hill, etc.



GAUNTLETS, GOGGLES, HELMET SET
Manufactured in high quality soft leather, gauntlets are lined in Chamoux. Goggles have padded leather face masks. All of the above sets are supplied in our wrapped in 1900 style retail box. Available in BRG, Black, White and Italian Racing Pied set £120.00
Available separately each item £30.00

CHEVRON THE DEREK BENNETT STORY
DAVID GARDNER
PHOTOGRAPHS BY MIKE GIBSON

HELMETS
2. CLASSIC JET A replica of a the 60's style jet helmets whilst being constructed to meet modern safety standards. It has full leather interior, 'D' ring securing, goggle retaining strap, extensive development and design has been put in and retains its 60's look and feel. Available in BRG, White and Black * £105.00
Other colours of your choice £15 extra



CHEVRON
The Derek Bennett Story
Chevron is the story of Derek Bennett, an ordinary man with an extraordinary talent, who started out mending road cars in a lock-up garage in the back streets of Salford, Northern England, and became one of the world's leading builders of racing cars.
272 pages £15.50

STEERING WHEELS
4. Woodruff 1414" available in flat or semi-dished * £93.52
5. Leather 15" available in flat or semi-dished * £65.70
Bosses to suit
Flat: all have elongated holes
Semi-dished: all have 9 hole style
All are authentic reproductions made by the original craftsmen from the 60's

8. MARK 3 RACING Black painted frame, black PVC face mask * £19.00
7. MARK 4 VETERAN MOTORING Chrome plated frame, tan leather face mask * £24.00
8. MARK 4 VETERAN FLYING Silver painted frame, brown leather face mask, original style * £31.00
9. MARK 4 SILVER CROSS Bright chrome plated frame, black leather face mask * £22.80

MOTOR CAR RACING MIRROR
10. Classic style bullet shaped 3 1/2" diameter, flat glass, mounted on a head. * £31.00
Aluminium £20.40
Chrome £24.00
11. Overstake mirror
Rain Channel Fitting * £15.50
Quarter Light Fitting * £15.50
12. Classic Style Touring Class Badge Mounting Bar - Highly polished stainless steel bar * £30.06
13. GB Letter Set, Highly polished stainless steel * £10.02

14. HEADLAMP STUARDERS
5 1/4" and 7" diameter. Made in woven steel mesh and chrome plated. Supplied with fixing clips.
15. HEADLAMP PEAK
5 1/4" and 7" headlamp chrome plated mirror polished brass fits neatly inside headlamp flange ring * £14.00



Graham and Betty Hill - 7th April 1963, BRCC Aintree 200
Courtesy of Autospot

GOGGLES
All BS 410X4
Manufactured with brass frames, hand stitched to leather or soft PVC padded face masks
6. MARK 3 RACING Black painted frame, black PVC face mask * £19.00
7. MARK 4 VETERAN MOTORING Chrome plated frame, tan leather face mask * £24.00
8. MARK 4 VETERAN FLYING Silver painted frame, brown leather face mask, original style * £31.00
9. MARK 4 SILVER CROSS Bright chrome plated frame, black leather face mask * £22.80

MOTOR CAR RACING MIRROR
10. Classic style bullet shaped 3 1/2" diameter, flat glass, mounted on a head. * £31.00
Aluminium £20.40
Chrome £24.00
11. Overstake mirror
Rain Channel Fitting * £15.50
Quarter Light Fitting * £15.50
12. Classic Style Touring Class Badge Mounting Bar - Highly polished stainless steel bar * £30.06
13. GB Letter Set, Highly polished stainless steel * £10.02



TO ORDER
TEL: 0829 70625
CARRIAGE
NEXT DAY £5.50
48 HRS £4.50
POST £4.00
UK CUSTOMERS MUST
ADD VAT TO ALL PRICES

1. SILVERSTONE PIT SIGNAL KIT
Lightweight frame made from durable metal tubing, complete with side on numbers. Approx weight 30g. **£90.00**
2. Number Seta separately containing 3 of each number, 1 of L, 1 of P, 1 of +, 1 of -, 1 of in, 1 of out, Yellow on black. **£15.95**
3. Pit Board Bag (holds board and numbers) **£21.75**



4. RACE NUMBERS
9" or 11" Race Packs Black, each pack containing six of each number and nine of number one. 63 in total. **£3.95**
- American 11" Style Race Pack Black, as 9" and 11" **£11.95**
- American 11" Style Race Pack White, containing six of each number and nine of number one. 63 in total. **£10.95**
- American 11" Style Race Pack Black, as 9" and 11" **£12.95**
- 9" or 11" Race Packs purchased separately 30p. G.P. 11" Numbers purchased separately **95p**
- Roundels **95p**
- Ovalings **95p**
- Novice Square **95p**
- On/Off Scavengers Delight Sheet **£1.50**
- Lap Charts (Pack of 25 sheets) **£2.50**

TO ORDER
TEL: 0829 70625
FAX: 01273 71000

CARRIAGE
NEXT DAY £5.50
48 HRS £4.50
POST £4.00

UK CUSTOMERS MUST
ADD VAT TO ALL PRICES

5. PIT BOARD AND NUMBERS
Lightweight alloy Pit Board etc numbers and carrying bag. **£85.50**
- Contents of number pack consisting of 3 of each number, 1 of L, 1 of P, 1 of +, 1 of -, 1 of in, 1 of out, Fuel, Yellow on Black, Red, Blue, Black or Yellow. Approx weight 15kg.



6. PANEL BOARDS
Number panels and signal panels with automatic level control available in three colours: Red on white, black on white, orange on black. Can be purchased separately to produce your own Pit Board. Panels each **£32.75**



7. DEMON TWEETS DIGITAL PIT SIGNAL BOARD
Features multi-mode stopwatch, interval lap chronograph, hourly alarm, speed chronometer, accumulated time, end of race average speed and time. Total time and total laps. Lap counter to 999. No electrical or additional equipment necessary. Sections sold individually with name panels. NOTE: Boards are firmly together so multi-layer boards can be built up if required, each **£25.00** (Approx weight 1.4kg)

- (STOCKING DEALERS REQUIRED)
- RALLY NUMBER PACKS
Ideal for Motor Clubs, single venues etc
- 01 50 x 2 = 30 x 1.30 x 2.30 x 3.30 x 4.12 x 5.10 x 6.10 x 7.10 x 8.10 x 9.10 x 0 = 182 Numbers **£27.00**
- 01 60 x 2 = 32 x 1.32 x 2.32 x 3.32 x 4.32 x 5.14 x 6.12 x 7.12 x 8.12 x 9.12 x 0 = 222 Numbers **£33.50**
- 01 75 x 2 = 35 x 1.35 x 2.35 x 3.35 x 4.35 x 5.34 x 6.28 x 7.12 x 8.14 x 9.14 x 0 = 282 Numbers **£42.30**
- 01 90 x 2 = 38 x 1.38 x 2.38 x 3.38 x 4.38 x 5.38 x 6.38 x 7.38 x 8.20 x 9.18 x 0 = 342 Numbers **£51.20**
- 01 120 x 2 = 106 x 1.46 x 2.44 x 3.44 x 4.44 x 5.44 x 6.44 x 7.44 x 8.44 x 9.44 x 0 = 504 Numbers **£75.60**



1. ROBIC ACUTRAK SC514S
Features multi-mode stopwatch, interval lap chronograph, hourly alarm, speed chronometer, accumulated time, end of race average speed and time. Total time and total laps. Lap counter to 999. No electrical or additional equipment necessary. Sections sold individually with name panels. NOTE: Boards are firmly together so multi-layer boards can be built up if required, each **£25.00** (Approx weight 1.4kg)

2. ROBIC ACUTRAK WRIST WATCH
Same functions as SC514S **£32.95**



3. ROBIC ACUTRAK SC500
Features multi-mode stopwatch, interval lap chronograph, accumulated split chronograph, 1st & 2nd place finish times. Time out feature. **£27.95**
4. NEW ROBIC ANALOGUE WRIST WATCH
BLACK, GREY OR YELLOW **£34.00**
5. ROBIC ACUTRAK TIMING BOARD HD 500
Timing board etc 1 Acutrak SC500 stopwatch **£66.95**
6. ROBIC ACUTRAK TIMING BOARD HD 500
Timing board etc 2 Acutrak SC500 Stop Watches **£86.10**
7. ROBIC ACUTRAK TIMING BOARD HD 500
Timing board etc 3 Acutrak SC500 Stop Watches **£105.18**



- BEST BUY
8 CHRONOTEC
10 hour stopwatch with split function, start and reset measures up to 9 hours, 59 minutes, 59 seconds. 8 lap and split times can be memorised and recalled when required. Lap counter and pre-settable count down timer. 30 second shuttle count down for limous. **£34.95**
- CHRONOTEC BATTERY **£2.50**



TO ORDER
TEL: 0829 70625
FAX: 01273 71000

CARRIAGE
NEXT DAY £5.50
48 HRS £4.50
POST £4.00

UK CUSTOMERS MUST
ADD VAT TO ALL PRICES

11. 1030 MEMORY MICROSPILT
Simultaneous display of running time, total intermediate time (split) and lap time. Intermediate times are numbered 0-8. Split and lap times can be memorised and recalled when required. Watch and rechargeable calendar up to 2019. **£106.10**

18
PIT & PADOCK
EQUIPMENT

ALIGNMENT
CASTOR/CAMBER GAUGE

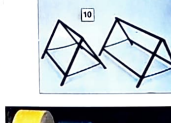
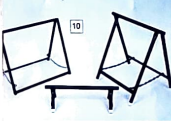
- DUNLOP
1. AGQ40 Optical type Alignment Gauge for all cars £369.95
2. CG45 Castor/Camber complete in box £262.05
CG6 Steering Turntable c/w run on ramps pair £447.05
3. CG4 Camber Gauge only £88.50
PACE
4. Pace Camber Gauge £62.95
5. Pace Corner Weight Gauge £107.15
6. Pace Corner Weight Gauge G-4000s and G-10000s
ADA
7. Castor/Camber Gauge £42.00
8. Corner Weight Gauges available for saloon and single seater cars, please specify when ordering. G-4000s Formula Ford/Clubmans O + P Type £165.00
O - 10000s Formula Ford/Clubmans O + P Type £165.00
O - 10000s Sports cars, some saloons O + P Type £165.00
O - 2000lbs Heavier saloon cars P Type only £200.00
9. Spring Attachment suitable for O Type gauge only £35.00
F Type gauges for use with inset wheels
O Type gauges for use with offset wheels.

AXLE STANDS/CHASSIS STANDS

Capacity per Pair	Minimum Height	Maximum Height	
4 Tonnes	12"	20"	£28.15 pair
6 Tonnes	12"	20"	£30.40 pair
12 Tonnes	14"	23"	£75.75 pair
DASHL	3 Tonnes	45 1/4"	£159.75 pair

10. CHASSIS STANDS

- SPA Slot Chassis Stands Formula Ford etc. Height 18" Width 24" pair £45.00
SPA Extra Wide Chassis Stand Height 18" Width 24" pair £55.10
SPA Extra Wide Chassis Stand Height 18" Width 32" pair £75.15
Chassis stands 550mm height x 540mm wide, powder coated, ideal for single seater pair £46.75
Car stand ideal for Formula Ford 150mm high, 350mm wide. Powder coated pair £18.05



16. DUNLOP TROLLEY JACKS

Capacity/Tonnes	Closed Height	Extended Height	
1.5	115mm/4.5"	805mm/31.75"	£231.25
2	115mm/4.5"	500mm/19.75"	£146.95
2 (For long chassis)	115mm/4.5"	500mm/19.75"	£159.50
2 (Rapid operation)	120mm/4.75"	850mm/33.50"	£181.95

*Manufactures mate "Compac" Plus many more available.



TANK TAPE

- 50mm x 50metre available in Blue, Red, Green, Yellow, Black, Silver
10metre White per roll £5.50
Extra wide tank tape 100mm wide x 50m long. Most colours per roll £19.95
Chrome Foil Tape 50mm x 50metre per roll £5.50
Clear PVC Tape 50mm x 33m "Leading Edge Tape" per roll £3.30

TO ORDER
TEL: 0829 70625
FAX: 0829 71002

CARRIAGE
NEXT DAY £5.50
48 HRS £4.50
POST £4.00

UK CUSTOMERS MUST ADD VAT TO ALL PRICES

QUICK LIFT AND HYDRAULIC JACKS

11. DT Medium Quick Lift Jack measurements of jack. Flat 1" x 25mm fully raised 8 1/2" x 215mm. Lifts 7 1/2" 150mm £49.95
12. DT Medium Quick Lift Jack c/w Roller Wheels. Minimum Height 1" x 25mm. Lift Height 8" x 200mm £59.95
13. DT Small Quick Lift Jack Formula Ford etc. measurements of jack. Flat 1" x 25mm, fully raised 8" x 200mm. Lift 7 1/2" 150mm c/w rollers £53.50
14. SPA F3000 Flat Bed Jack Lift Height 5 1/4" x 135mm £125.25
15. SPA F3000 Rear Wheel Jack Lift Height 5 1/4" x 135mm £130.25
16. BLUSTEIN Monkey Quick Lift Jack £58.00



£165.00

£59.95

£130.25

£262.05

£107.15

£62.95

TYRE HEATERS

- As used in Formula 1 Group C Group A, saloon car, F3000, Hillclimb cars etc. Designed to pre-warm tyres to reduce heat, reduces tyre wear caused by running on cold tyres enables you to reach racing speeds much quicker. Prices vary depending on type of car size of tyre. To supply and confirm price we require the following information: Type of vehicle, Diameter of tyre, width of tyre, profile of tyre, vulcanizer required.
- | Approx prices | Set of 4 |
|------------------|----------|
| Standard F3000 | £935.00 |
| Standard F3 | £795.00 |
| Standard Group A | £797.00 |
| Standard Group C | £1290.45 |
| 2 Way F3000 | £2479.00 |
| 2 Way Group C | £2653.20 |
- Standard The blankets are individually heated to 35 degrees centigrade with thermo static controllers fitted to each blanket.



2 Way The blankets are equipped with a remote control box with 20 individual heaters to heat 20 individual tyres to a specific or different temperature to the 2 rear tyres or the 2 front tyres.

PAGE 19
PIT & PADOCK
EQUIPMENT

17. New Pocket Thermometer c/w Tyre Probe KM220 range -40C to 150C or -40F to 300F Removable probe. Centigrade or Fahrenheit. Maximum and minimum display and memory. £59.95
KM220 Surface Probe £18.95
KM250 Thermometer incl tyre probe £89.95
18. LAB Digital Thermometer, similar to KM450. 50C-750C c/w carrying case £96.80
20. KC3 Tyre Probe to suit KM450/LAB £42.00
21. KS1 Surface Brake Probe to suit KM450/LAB £33.80
22. Check-It! Pyrometer inc Tyre Probe c/w case -40F to 199F £125.00

NEW SMARTLEVEL CAMBER/CASTER GAUGE C/W CASE
A unique digital inclinometer with up to 10° of repeatable accuracy. That means no matter where you need a precise angular reading, Smartlevel delivers. Place Smartlevel anywhere and it gives you an accurate digital readout instantly - with no interpretation or guesswork.
Features:
- digital readout provides absolute readings with repeatable accuracy
- three sensitivity settings (-10.1° -10.2° -10.5°)
- can be zeroed at any angle
- 120-hour battery life with auto-shutoff
- sunlight viewable
- switchover bubble-vial mode
Applications:
- drive shaft angles
- camber, caster and A-arm angles
- chassis lining and fabrication
- fature work
- tube bending
- metal forming
- racecar wing angles
- bodywork
Module can be supplied separately (as shown) £148.00
£99.95

19. £35.00

20. £88.50

21. £369.95

22. £42.00



LOCKWIRE/LOCKWIRE PLIERS
24. Deluze Professional Safety Lockwire Kit. Consisting of 3 spools wire 0020, 0022, 0041 in dia. 2prs pliers c/w extensions, c/w case £149.95
Lockwire 0160mm 250gsm £5.95
Lockwire 0180mm 250gsm £5.95
25. Cutlip Plier Set £16.00



MISCELLANEOUS ACCESSORIES
Anderson Jack Plug £35.95
Anderson Jack Plug Handle £1.50
Dunlop Sucker Sheet £2.50
Aurotec Oil/Diesel Switch £102.75
Aurotec Mastra Switch £21.55
Aurotec Spare Key £4.15
Aurotec Spare Resistor £2.45
26. C Spanner Fixed (1.9" ID or 2" ID) £5.95
27. C Spanner Adjustable £14.95
Flare Guard Fireproof Cloth 1m x 1m £29.95
DI. Pass Holder £1.50
Ear Plugs Canister £1.00
28. Paint Sticks. Great for tyre marking. Various colours. £2.50

TO ORDER
TEL: 0829 70625
FAX: 0829 71002

CARRIAGE
NEXT DAY £5.50
48 HRS £4.50
POST £4.00

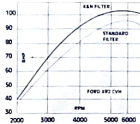
UK CUSTOMERS MUST ADD VAT TO ALL PRICES

K & N COMPETITION AND PERFORMANCE AIR FILTERS



Performance plus Protection

K & N THE ONLY COMPETITION AIR FILTER MEETING DUST EFFICIENCY LEVELS DEMANDED BY ENGINE MANUFACTURERS



COMPETITION AIR FILTERS New Formula Ford... \$21.30, \$184.04, \$119.51

BOLT ON FILTERS Round and oval filter units with stainless steel lips... \$25.87, \$69.43

ALFA ROMEO \$28.44, AUDI \$21.51, BMW \$37.39, FIAT \$33.57, FORD \$38.87, HONDA \$38.14, JAGUAR \$28.44, LANCIA \$29.26, LOTUS \$28.44, MAZDA \$29.26, PEUGEOT \$29.26, PORSCHE \$29.26, SUBARU \$29.26, VOLKSWAGEN \$29.26

TRUCK RACING Clump on hoses for 1/4" & 3/8" intakes up to 100 hp max! \$40.99

NEW FORMULA FORD... \$21.30, \$184.04, \$119.51

RS2000 F16 standard box each \$29.39, RS2000 Clamp on 800 hp cap \$40.59, BGA BDF Engines \$105.00

Challenge Rectangle Kits \$58.42, MG/MG \$25.87, Lotus \$69.43

K & N FIT AND FORGET Replacement elements, 100,000 miles... \$21.51, \$28.44

MAKE MODEL \$28.44, \$21.51, \$37.39, \$33.57, \$38.87, \$38.14, \$28.44, \$29.26, \$29.26, \$29.26, \$29.26



PIPERCROSS (COMPETITION) LTD

PIPERCROSS AIR FILTERS K&K65N and K&K60N Formula Ford These Alloy Elements designed for use with manufacturers own air boxes... \$14.95, \$18.50

ACCESSORIES \$39.90, \$23.00, \$23.00, \$23.00



Micro DYNAMICS

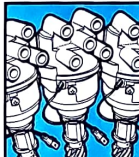
The MicroDynamics range of products provides the very best engineering solutions to improving all ignition, fuel injection, engine management and turbo systems.

DISBURTIONS Performance units for competition engines... \$126.80, \$84.25, \$84.25, \$156.59, \$74.04

ELECTRONIC IGNITION POINTS TRIGGERED ALPHA PLUS \$41.70... \$41.70, \$58.72, \$84.25, \$156.59, \$74.04

TURBO PARTS IGNITION MANAGEMENT EM55 \$106.38... \$106.38, \$72.34, \$195.74

FUEL INJECTION REGULATORS \$179.00



CONTACTLESS TRIGGERED ELECTRONIC units with contactless triggering... \$55.31, \$84.25, \$148.93, \$169.36, \$126.80, \$210.21, \$116.59

Complete Kits consisting of Electronic Distributor, Contactless Ignition Amp., Rev Limiter and High Energy Coil... \$167.65

SPECIAL HYALITE H.T. LEADS \$6.25, \$4.68, \$5.10, \$5.53, \$6.80, \$7.23, \$4.25, \$4.68, \$5.10, \$5.95

25 ELECTRONIC MANAGEMENT

Gear Shift Shift-Light Indicator



This brilliant new idea is giving top drivers that split second edge... \$179.00

Digi-Tach Digital Tachometer



Another MicroDynamics first... \$119.00

SmoothCut RL5 Dash Controlled Rev Limiter



Now a rev limiter that fits on the dash and that can be set up against your tach... \$69.00

ENGINE REV MONITOR & CONTROLLER \$65.00, \$50.00, \$50.00, \$50.00

TO ORDER TEL: 0829 70625 FAX: 0829 71002 CARRIAGE NEXT DAY £5.50... \$259.00

STACK STACK STACK

PAGE
26
GAUGES



ST400 TACHOMETER
The original and still the best genuine professional tachometer. It's race proven, award winning design guarantees exceptional accuracy and robustness over many years of use. Couple this with the ability to upgrade the unit to more sophisticated models in STACK's range and a first class long term investment is the result. The ST400 is available in a large selection of dial formats ensuring the optimum match with your engine. ST400 Tachometer with maximum reading (left-tail) **£219.00**

ACTION REPLAY TACHOMETER
In the latest addition to the highly regarded STACK tachometer range, the ACTION REPLAY TACHOMETER offers real performance advantages. Records your last run, allowing you to replay vital information directly on the dial. Maximum and minimum revs in each gear, corner, entry, exit and end of straight revs can all be reviewed at the touch of a button. An invaluable aid to fast and simple gearing analysis. Change gear at precisely the right point every time. By using the ACTION REPLAY TACHOMETER'S "multi-light" function an alarm light can tell you your optimum gear change point without having to look at the tachometer dial, benefiting driving concentration and safety. The ACTION REPLAY TACHOMETER, now you can keep your eyes on the opposition and your tachometer work for you. ST426 Tachometer with 5 minute action replay (10 samples/second) **£249.00**

PRINTER
ST500 Solo DPI 411 Printer and Connecting Cable kit **£220.00**



ELLIOT DESIGN 80MM TACHOMETER
A rugged reliable low cost instrument suitable for all competition applications.
Available in 4 cyl, 6 cyl, 8 cyl LC80.0
V-type 4 cyl 80mm Tacho **£85.00**
BCB80 1 Various scales and cylinders, illuminated **£104.50**
BCB80 2 Various scales and cylinders, with tail-late, illuminated **£169.50**

UK CUSTOMERS MUST ADD VAT TO ALL PRICES

**TO ORDER
TEL: 0829 70625
FAX: 0829 71002**

**CARRIAGE
NEXT DAY £5.50
48 HRS £4.50
POST £4.50**

PERFORMANCE ANALYSER
Utilising all the features of the ST600 and Action Replay Tachometers, the Performance Analyser additionally gives you the ability to record information for up to 25 minutes. This data can then be simply transferred to a printer of a personal computer for a permanent graphical record, making it possible to compare lap to lap, drive to drive and so on. Also, by using the Stack Infra-red Track Marker System in conjunction with the Performance Analyser, accurate records of lap and segment times can be shown alongside the graphical information allowing you to pinpoint where you are gaining or losing time, and giving you the opportunity to objectively compare the results of set up changes to the car.



ST600 Performance Analyser with 25 minute memory (10 samples/second) **£375.00**
ST610 Performance Analyser with 5 minute memory (10 samples/second) **£375.00**
ST682 Performance Analyser with 25 minute memory (10 samples/second) **£450.00**

ACCESSORIES
ST510 2 Switches, with waterproof seals and crimp connectors **£12.60**

SCHRICK POWER MEASURING INSTRUMENT

LM1

LM1 measures the acceleration forces by evaluating the changes in engine timing at speed intervals of 500 rpm each. The measurements are stored in a memory. LM1 automatically calculates the averages from up to 8 test series stored. Power can be measured for engine speeds up to 25000 rpm.

Advantages of the Electronic Method of Measurement
Quick and easy determination of engine power - ideal for performing adjustments and checking tuning
No mechanical installations necessary such as brakes, rollers, etc.
When measuring in idle there is no load exerted on the power transmitting components or tyres
No harm to engine or environment because the measuring cycle is short.

All displays can be made to appear in German, English or French. As used by RAC-MSC's successful 1 year guarantee Power Measurement in BHP/PS and kW. A Riding Record in your Pocket **£850.00**



DMS TECHNOLOGIES VARLEY RED TOP RACING CAR BATTERIES
Red Top 30AH Top 40 For endurance racing and rallying where extra capacity is required together with high surge current and its ability to withstand high shock and vibration

Red Flash 20
Use where lower capacity is acceptable. Significant weight and reduction can be achieved while keeping the same starting performance. Both Red Top and Red Flash Batteries can be mounted on their side or upright

TYPE	VOLUME	CAPAH	WEIGHT	DIMENSIONS	TERMINATIONS	PRICE
1. Red Top 40	12	35	11kg	250mmxLx97mmx104H	M6 Studs c/w wing nuts	£133.65
2. Red Top 30	12	26	8.4kg	250mmxLx97mmx156H	M6 Studs c/w wing nuts	£50.40
3. Red Flash 20	12	14	4.6kg	155mmxLx86mmx148H	M6 Nut & Bolt	£119.58

BATTERY BOXES (Foreglass complete with lid)

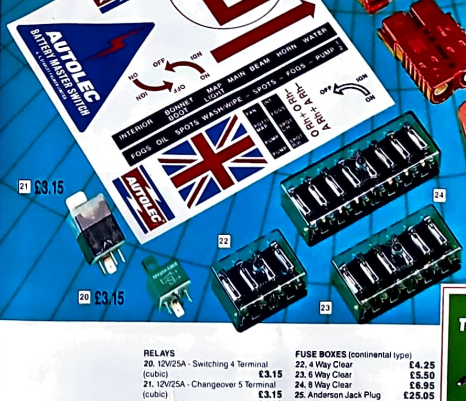
TYPE	Length	Width	Height	Price
4. Standard	270mm	190mm	140mm	£26.72
5. Torque Start	220mm	180mm	140mm	£26.72
7. Varley 30	250mm	110mm	140mm	£26.72

Red Top Carry Case (no wire or jack plug) **£40.04**



ELECTRICAL RACE & RALLY

- 15. FIA Battery Master Switch with 3P 240 200 55 **£21.55**
- 16. Mini-Master Battery Cut-Out Switch 240 200 86 **£14.15**
- 17. Spare Key for above **£4.15**
- 18. Span Resistor for above **£2.45**
- 19. Race & Rally Decal Sheet **£1.50**



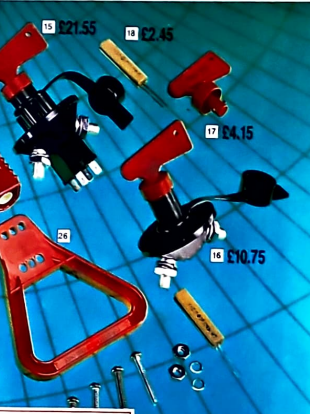
RACE MIRRORS

Saloon
1. VIT75S Baby Turbos, Universal Black each **£14.60**
10. VIT70A Californian Left, Black each **£14.20**
11. VIT106 Californian Right, Black each **£14.20**
11. Single Seater Race Para fully adjustable slimline mirror, White or Black (As fitted to Williams F1) each **£19.95**
12. Technical Adjustable Race Mirrors Black only pair **£48.00**
13. Sport Race Mirrors, White or Black As used by Paul Heywood/Wyn Deenari, each **£19.95**



14. PULSAR RACING BATTERIES
The Pulsar is a radically different car battery. It looks like no other battery. It performs like no other battery. In fact, we don't even call it a battery. We call it a Power Pack. Pulsar introduces a new era of battery technology. Pulsar is a sealed unit. It has a special 'Teflon' casing. Pulsar offers 90% more cranking power than a conventional battery of the same weight. 20HR CAP

	LENGTH	HEIGHT	WIDTH	WEIGHT	(AH)	PRICE
3P	240	200	55	2.8	10	£85.00
5P	240	200	55	4.7	18	£55.00
8P	240	200	86	7.4	28	£75.00
10P	240	200	105	9.2	36.0	£88.00



**TO ORDER
TEL: 0829 70625
FAX: 0829 71002**

**CARRIAGE
NEXT DAY £5.50
48 HRS £4.50
POST £4.50**

UK CUSTOMERS MUST ADD VAT TO ALL PRICES

UK CUSTOMERS MUST ADD VAT TO ALL PRICES

FORD ESCORT MK4 2 DOOR
April 1988 - August 1989
Front Spoiler **£42.37**
Rear Valance **£62.62**
Side Skirts **£77.10**
Optional extras
Rear Spoiler as OE spec. B. Plain Rear Spoiler can only be fitted with above **£62.21**



PEUGEOT 205 3 Door GTi
Front Spoiler **£48.22**
Rear Valance **£56.77**
Side Skirts **£77.10**
Optional Extras
Rear Spoiler **£62.21**
Rear Spoiler to 12/1987 **£44.96**
Rear Spoiler from 1988 **£44.96**
Front Grille **£20.77**
Also available for 205 3 door models and 205 5 door models with or without Front Spoiler Spot Lamp recess **£25.12**



FRONT SPOILERS
Mini, Mini Clubman, Ford Fiesta MK1, Escort 2, Opel Ascona B, Kadett C
Metro **£27.00**
BMW 3 series, Cortina Mk4's **£28.87**
Escort MK3, Orion, BMW 5 Series **£37.42**
BMW 3 series Escort MK3, Capri MK2, VW Scirocco, Golf GTi **£40.50**
Peugot 205, Metro 2 Door **£47.17**



TO ORDER
TEL: 0829 70625
FAX: 0829 71002
CARRIAGE
NEXT DAY £5.50
48 HRS £4.50
POST £6.00
UK CUSTOMERS MUST ADD VAT TO ALL PRICES



FORD SIERRA L/L/L WITHOUT FOG LAMP RECESS March 1987 on
Front Spoiler **£63.60**
Rear Valance **£62.62**
Side Skirts **£69.30**
Optional extras
Rear Spoiler **£62.21**
Available for most models of Sierra. Ring for details



MINI STYLING KIT
Comprises of front valance, rear valance, side skirts, wheel arches.
Optional Extras
Top Spoiler **£14.86**
Bottom Spoiler **£44.96**
Front Grille not Clubman **£26.50**
Front Grille with Lamps not Clubman **£43.50**
Centre Console with Cassette Box **£32.46**
Mini Special Arches inc Trim **£19.95**
Nudge Bars - Enquire for Details



REAR SPOILERS
Lower Spoiler Fiesta Ma3 **£71.20**
Spoiler Sierra Sapphire **£62.20**
Spoiler BMW 5 Series **£74.95**
Full Range Available Ring for Details

This is just an example. Many more stocked. Please phone for price quotation for your car.

AUDI
Quattro Front Upper (A) **£97.10**
BMW
3 Series up to 87 Front Front (A) **£91.10**
3 Series 87 on Front Upper (A) **£91.50**
M3 Rear (A) **£86.50**
CITROEN
Visa Group N Front Upper (S) **£40.20**
Visa GTi Adjustable Front Upper (S) **£44.40**
AXAT
XRS Sport Adjustable Front Upper (S) **£47.30**



OMP STRUT BRACES

205 GTi 161 9 Front Lower (S) **£27.00**
309 16V Front Upper Adjustable (S) **£47.80**
RENAULT
RS GT Turbo Adjustable Front Upper (S) **£40.30**
RS GT Turbo Front Upper (A) **£73.50**



FIAT
Rilmo Front Upper (2 holes) to **£31.60**
Rilmo Front Upper Adjustable 83 to **£38.50**
(S) **£38.50**
Lino 45/70 Front Upper Adjustable (S) **£41.20**
Lino Turbo up to 89 Front Upper Adjustable (S) **£45.50**
Rilmo Rear Upper (S) **£22.80**
Lino Turbo to 89 Front Upper Adjustable (A) **£47.60**
Top Front Upper (S) **£28.00**
FORD
XR3i Carb 2 bolt fitting to 583 (S) **£35.90**
XR3i 16VRS Turbo Front Upper XR3i (S) Check Air Box **£71.20**
XR3i 16VRS Turbo Front Upper (A) **£92.80**
SIERRA
XR4i 4x4 2 8 Front Upper Not ABS (A) **£72.80**
Sierra Cosworth (3/4 door) Front Upper (A) **£72.80**
Sierra Cosworth (3/4 door) Rear Upper (A) **£72.80**
Fiesta XR2 Front Upper MK2 CVH (S) **£40.20**
Fiesta XR2 89 on Rear Upper (S) **£22.80**
Fiesta XR2 89 on Front Upper (S) **£48.80**
Fiesta XR2 89 on Rear Upper (S) **£35.50**

OPEL VAUXHALL
Asira GTE MK2 BV Adjustable Front Upper (S) **£41.20**
Asira GTE MK2 BV Front Upper (A) **£84.00**
Swift 16V Front Upper (A) **£84.00**
Swift 16V Rear Upper (A) **£61.20**
TALBOT
Sunbeam Front Upper (S) **£43.30**
Samba Rally Adjustable Front Upper (S) **£38.80**
VOLKSWAGEN
Golf Mk1 Front Upper (A) **£100.30**
Scirocco Mk1 Front Upper (A) **£43.30**
SCIROCCO
Golf Mk2 Front Lower 4 Attachments (S) **£48.90**
Golf Mk2 Front Upper (S) **£38.90**
Golf Mk2 Front Upper (A) **£46.40**
Golf Mk2 Rear Upper (S) **£23.70**
Golf Mk2 16V Front Upper (A) **£50.10**
Polo Front Upper (S) **£40.50**
Polo Rear Upper (S) **£23.60**

VAUXHALL
CC15 1400 Front Upper Adjustable (S) **£42.00**
SAZUKU **£84.00**
Golf Mk2 Front Upper (S) **£38.90**
Golf Mk2 Front Upper (A) **£46.40**
Golf Mk2 Rear Upper (S) **£23.70**
Golf Mk2 16V Front Upper (A) **£50.10**
Polo Front Upper (S) **£40.50**
Polo Rear Upper (S) **£23.60**
A = Alloy
S = Steel

CHASSIS MOUNTING
Escort MK1/2 Sumpguards **£66.00**
CC54 1/4" dual **£66.00**
GROU PV **£66.00**
Escort MK1/2 Sumpguard **£135.00**
CC57 1/4" dual **£135.00**
CAPRI **£52.50**
CC58 2 Bumpguard **£52.50**
MINI **£37.50**
CC17 1/4" dual long sumpguard **£37.50**
CC18 Extension to cover remote **£30.00**
CC20 Steel short sumpguard **£30.00**
CC19 Scottish 1/4" dual sumpguard **£52.50**

METRO
CC21 1/4" dual sumpguard **£52.50**
CC28 Extension to cover remote **£30.00**
CC20 Steel short sumpguard **£30.00**
CC19 Scottish 1/4" dual sumpguard **£52.50**
CC22 Sumpguard (steel)
MAESTRO/MONTREGO **£112.50**
CC53 Sumpguard 1/4" dual-ribbed **£112.50**
VAUXHALL CHEVETTE
CC18 Sumpguard 1/4" dual **£37.50**
SUNBEAM **£37.50**
CC15 Sumpguard 1/4" dual **£42.00**
CC74 Sumpguard 1/4" dual **£135.00**
EARLY TYPE FIESTA SUMP GUARD
CC23 1/4" dual **£67.50**
LATER TYPE FIESTA (CVH ENGINE) SUMP GUARD
CC59 1/4" dual **£70.50**
FIESTA STEEL TANKGUARD
CC24 MK10 **£45.00**
FORD ESCORT III (Up to 86) RS 1600INS TURBO
CC50 Sumpguard 1/4" dual **£97.50**
CC61 Extension piece to cover remote **£37.00**
CC62 Steel Tankguard **£57.00**
VW GOLF GTI MK1 **£120.00**
CC63 Sumpguard plate 1/4" dual **£120.00**

OPEL MANTA/ASCONA
CC64 Sumpguard 1/4" dual. Also suits **£75.00**
ESCORT 205 **£105.00**
CC65 Sumpguard 1/4" dual **£105.00**
CC66 Tankguard steel **£75.00**
ASTRA
CC67 Sumpguard 1/4" dual ribbed **£120.00**
CC68 Tankguard Steel **£120.00**
VAUXHALL ASTRA II
CC69 Sumpguard 1/4" dual ribbed **£120.00**
CC70 Tankguard (Steel) ribbed **£82.50**
VAUXHALL NOVA
CC71 Sumpguard 1/4" dual **£142.50**
CC72 Tankguard (Steel) ribbed **£82.50**
FORD SIERRA
CC73 Sumpguard 1/4" dual **£120.00**

SUMP GUARDS
COMPETITION COMPONENTS
Escort MK1/2 Sumpguard 1/4" dual **£42.00**
CC13 1 1/2" wide **£37.50**
CC14 1 1/2" wide **£42.00**



BBS STEERING WHEELS
A new product from the renowned road wheel manufacturer. Steered by the BBS design team and hand manufactured in exquisite call leather. Available in 3 or 4 spoke design and 355mm or 380mm.

TO ORDER
TEL: 0829 70625
FAX: 0829 71002
CARRIAGE
NEXT DAY £5.50
48 HRS £4.50
POST £6.00
UK CUSTOMERS MUST ADD VAT TO ALL PRICES

Steering Wheel **£195.00**
Fitting Kit **£35.00**

1. BBS 4-spoke Tech
2. BBS 3-spoke Leather
3. BBS 3-spoke Zebra
4. BBS 3-spoke Walnut



1 £244.30

PAGE
40
STEERING WHEELS

MOMO STEERING WHEELS

- 1. Porsche design leather 360mm £244.30
- 2. Futura 3 leather 360mm £167.02
- Futura 4 M38 leather 380mm similar to 3 spoke £156.00
- 3. Corse leather black 320/350mm £126.98
- Corse leather colours 320/350mm £132.30
- Corse suede 320/350mm £132.30
- Corse Alcantara 350mm £111.86
- 4. Benetton leather 4 colour 350mm £153.30
- 5. Zagato leather 360mm £167.02
- 6. Spide leather 360mm £193.20
- 7. Olympic III leather 360/380mm £196.00
- 8. Monte Carlo leather 320/350mm £109.06



2 £167.02



3 £167.02



4 £153.30



5 £126.98

MOMO RACE WHEELS

- F1 D shape, suede 370mm £119.42
- F1 Round, suede 260/280/320 £119.42
- F1 Alcantara, suede 260/280/320 £119.42



6 £193.20



7 £119.42



8 £196.00



9 £109.06



Hub mounting kits available for most cars £27.00

GEAR KNOBS

- 14. Anatomic short, leather £32.06
- 12. Anatomic long, zebrano/wood £32.06
- Anatomic long, briar wood £73.50
- Super Anatomic long, wood £32.06



10

- 10. Anatomic long, leather Benetton multi-colour £37.66

TO ORDER
TEL: 0829 70625
FAX: 0829 71002

CARRIAGE
NEXT DAY £5.50
48 HRS £4.00
POST £4.00

UK CUSTOMERS MUST ADD VAT TO ALL PRICES

- 13. Anatomic long, coloured leather £32.06
- 11. Super Anatomic long, black leather £32.06
- Super Anatomic long, suede colours £32.06
- Super Anatomic long, Alcantara black £32.06
- Super Anatomic long, Alcantara red/grey £33.60



11



12

13

14



15 £207.06

WOODRIM WHEELS

- 15. Monte Carlo 5, wood/polished spokes 350mm £207.06
- 16. Futura, wood/zebrano 370mm £198.80
- Futura, wood/briar 370mm £381.70
- 17. Astra, wood/black spokes 360/380mm £184.94
- 18. Astra, wood/polished spokes 360/380mm £204.40
- 19. Grail II, wood 370mm £166.60
- 20. Monte Carlo, wood/black spokes 350mm £155.40
- 21. Monte Carlo, wood/polished spokes 356mm £186.34



16 £198.80



17 £204.40



18 £184.94



19 £155.40



20 £166.60



21 £186.34

PAGE
41
STEERING WHEELS & WHEELS

MOMO ALLOY ROAD WHEELS

- | | | |
|--------|------------|---------|
| QUASAR | 5 1/2 x 13 | £121.77 |
| | 6 x 14 | £134.68 |
| | 7 x 15 | £153.13 |
| | 8 x 16 | £192.24 |
| | 7 1/2 x 16 | £192.24 |
| | 8 1/2 x 17 | £226.50 |
| MIRAGE | 7 1/2 x 16 | £156.82 |
| | 7 1/2 x 17 | £175.02 |
- Hub/bolts each £2.58
Centering ring each £2.50
Emblems (car names) each £3.45
Mono-lock nuts/bolts set £14.95
Spare keys each £3.00



QUASAR



MIRAGE



I.D.E.A

TO ORDER
TEL: 0829 70625
FAX: 0829 71002

CARRIAGE
NEXT DAY £5.50
48 HRS £4.50
POST £4.00

UK CUSTOMERS MUST ADD VAT TO ALL PRICES

NEW! I.D.E.A. WHEEL FROM MOMO

Supplied in anthracite base colour c/w the unique alloy spoke covers. Enables you to colour wheels to match car. Sizes and prices soon to be available. Ring for further details.

MOUNTNEY
1. Black leather 3 Spoke available with either polished or black centre 10" 11" 12" 13" 14" 15" with flat semi-dished or full dish spokes. Full dish only available in black spokes 10" - 14" £21.20
15" £28.98
2. Black leather 4 spoke available with either polished or black centre 13" or 14" only £27.55

£21.30



SPARCO
Momo Competition Wheels Specially developed for use on competition cars, as fitted to the works Lancia Delta rally cars.



5. 2 Spoke, Dish, available in Red or Black suede or Flat or Black leather. £91.80
6. 2 Spoke, Flat, available in Black suede or leather. 7. 3 Spoke, Dish, available in Black suede or leather. All one price £91.80
Momo Hub Kits available for most cars £27.00

8. Standard 12" Kart leather 3 spoke Black or polished centre £21.05
Standard 12" Kart suede 3 spoke Black or polished centre £24.55
Thick grip 12" Kart leather 3 spoke Black or polished centre £24.55
Thick grip Kart suede 3 spoke, Black or polished centre £28.05
9. SPA Alpha Automatic Race Wheel black or red suede 260mm £59.95

TO ORDER
TEL: 0829 70625
FAX: 0829 71002
CARRIAGE
NEXT DAY £5.50
48 HRS £4.50
POST £4.00

UK CUSTOMERS MUST ADD VAT TO ALL PRICES

3. Woodruff 3 Spoke Black, Flat or semi-dished £40.10
Woodruff DeLuxe 3 spoke Black or polished centre. 13" only flat or semi-dished £53.50
Buckley 3 spoke & 4 spoke Black centre, available in Black, Red, Blue or Grey, 13" or 14" semi-dished only.
3 Spoke £27.55
4 Spoke £27.55
Coloured leather 3 spoke & 4 spoke Black centre, available in Red, Blue White or Grey. Semi-dished only.
4. 3 Spoke £27.55
4 Spoke £32.98



RACE WHEELS
11. Mountney 10" leather Race Wheel, Black or polished centre £21.05
Mountney 10" suede Race Wheel, Black or polished centre £24.55
Futura Race 3 spoke, Black centre, flat bottom race wheel, leather £38.60
12. Futura Race 3 spoke, Black centre, flat bottom, suede race wheel £38.60
13. Diteman Tweaks 10 1/2" Rod or Black, suede or leather £59.95



KART WHEELS
14. Standard 12" Kart leather 3 spoke Black or polished centre £21.05
Standard 12" Kart suede 3 spoke Black or polished centre £24.55
Thick grip 12" Kart leather 3 spoke Black or polished centre £24.55
Thick grip Kart suede 3 spoke, Black or polished centre £28.05
9. SPA Alpha Automatic Race Wheel black or red suede 260mm £59.95

16. Clubmans alloy quick fit adaptor. £60.00
17. SPA Quick fit adaptor, to mount race wheels on to spacers. £35.95

18. Clubmans alloy quick fit adaptor, to mount race wheels on to spacers. £35.95

REVOLUTION ROAD RFX
5 1/2 x 13 Ford FWD £51.56
5 1/2 x 13 Nova/Golf £51.56
5 1/2 x 13 Metro/Mini £51.56
6 x 13 Ford FWD £53.50
6 x 13 Astra/Golf £53.50
6 x 13 Mini £58.60
6 x 14 Ford FWD £63.53
6 x 14 Golf £63.53
6 x 14 Nova/Astra £63.53
6 x 14 Peugeot £63.53
6 x 14 Alfa 33 £73.56
6 x 15 Astra £73.56
7 x 15 Peugeot £79.20
7 x 15 Cosworth £79.20
8 x 15 Cosworth £86.29
7 x 15 Golf £79.20
7 x 15 Alfa £79.20
7 x 15 Astra £92.04
8 x 16 Cosworth £92.04
RFX COMPETITION
5 1/2 x 13 Ean K/C £60.36
5 x 14 Nova GPN £67.76
5 1/2 x 14 Astra GPN £70.40
6 x 14 Nova GPN £60.36
5 1/2 x 13 Lino GPN £70.40
6 x 14 Golf GPN £82.36
6 x 15 VFW GPN £82.36
6 x 15 Integra GPN £82.36
6 x 15 Mazda GPN £82.36
7 x 15 Caterica GPN £88.35
6 x 14 Peugeot GPN £70.40
7 x 15 Cosworth GPN £88.35
7 x 16 Cosworth GPN £102.96
8 x 16 Cosworth GPN £110.00

3 piece available. Phone for quote

Four spoke RFX series. Black/ Gold/Silver/White/Anthracite/Red Spokes with Diamond finish. Special colours available to order. Centre cap in Black or Chrome finish (includes with road application only).

5 SPOKE ROAD
6 x 14 Ford £57.20
6 x 14 Triumph £57.20
6 x 15 Sumo/Granada £72.68
7 x 15 Sumo/Granada £78.30
6 x 15 Sumo/Corina £72.68
7 x 15 Sumo/Corina £78.30
8 x 15 Ford RWD £85.00
8 x 15 Ford/Denver £85.00
10 x 15 Ford/Denver £101.72

MOUNTNEY GEAR KNOBS
14. Leather or Suede in Black, Red, Blue, White or Grey £10.05
15. Also in Wood £10.05
Mountney and Alpha hub mounting kits available for most cars £3.50

WOLFRACE ALLOY ROAD WHEELS
TW Audi, BMW, Ford, Honda, Mercedes, Renault, Vauxhall, Volkswagen
6 x 11 £56.25 7 x 15 £60.00
R5 Audi, BMW, Ford, Mercedes, Toyota, Vauxhall, Volkswagen
7 1/2 x 15 £72.00 7 1/2 x 16 £82.50
S8 Audi, BMW, Ford, Mercedes, Mitsubishi, Vauxhall, Volkswagen
7 1/2 x 16 £82.50

PS
PS
PS
PS



PS
PS
PS
PS



ACCESSORIES
Chrome plated wheelnuts each £1.50
Chrome plated wheelbolts each £1.95
Locking wheelnuts set £22.95
Locking wheelbolts set £26.15
Centre cap with emblem Black each £2.00
Centre cap with emblem Chrome each £2.50

TS Audi, BMW, Fiat, Ford, Honda, Peugeot, Renault, Saab, Toyota, Vauxhall, Volkswagen
6 x 14 £60.00
6 x 15 £67.50

BX BMW, Ford, Honda, Mazda, Mercedes, Mitsubishi, Nissan, Vauxhall, Volkswagen
6 x 14 £58.50
6 x 15 £64.50

TO ORDER
TEL: 0829 70625
FAX: 0829 71002
CARRIAGE
NEXT DAY £5.50
48 HRS £4.50
POST £4.00

UK CUSTOMERS MUST ADD VAT TO ALL PRICES

PERFORMANCE INDUSTRIES

Alloy Wheels

1. AUSTAR
6 x 14 **£56.80**
6 x 15 **£83.95**
7 x 15 **£70.80**
7 x 15 **£75.15**

2. SPECTRA II
5 x 12 **£43.40**
5 1/2 x 13 **£48.75**
6 x 14 **£56.35**

3. SPECTRA
5 1/2 x 13 **£48.75**
6 x 14 **£56.35**
7 x 14 **£66.25**
7 x 15 **£88.50**
6 x 15 **£63.95**
7 x 15 **£70.80**
8 x 15 **£75.35**
6 x 16 **£74.80**
7 x 16 **£76.15**

4. MODULAR
6 x 14 **£56.80**
6 x 15 **£83.95**
7 x 15 **£70.80**
7 x 15 **£75.15**

5. CHALLENGER
5 1/2 x 13 **£48.75**
6 x 14 **£56.35**
7 x 14 **£66.25**
7 x 15 **£88.50**

6. SUPERLITE
5 x 12 **£41.35**
6 x 13 **£50.25**
7 x 13 **£54.80**
8 x 13 **£60.90**
6 x 14 **£58.60**
8 x 15 **£83.95**
7 x 15 **£68.50**
8 x 15 **£75.35**

Wheels are supplied in colours shown, alternative colours supplied to order. Supplied complete with nuts and caps. Available to fit most applications.
BL, BMW, Fiat, Ford, Nissan, Opel, Vauxhall, VW, Volvo, also a 4 wheelers catered for. Check for availability for your car.



NEW RAY
Silver
6 x 14 **£57.50**
6 x 15 **£75.57**
7 x 15 **£80.63**
8 x 14 **£72.65**
8 x 15 **£76.63**
7 x 15 **£84.85**



Wheelwright
Alloy and Steel Wheels

In most cases, wheels suitable for standard nuts. Car manufacturer's logos available to fit centre caps on New Ray, Carrera/Dyna/Newstar at extra cost.

CARRERA
Silver Polish
6 x 14 **£91.32**
7 x 15 **£106.00**

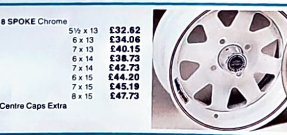
Anthracite Polish
6 x 14 **£92.56**
7 x 15 **£107.34**



TRACKSTAR
5 x 12 **£23.12**
6 x 13 **£26.02**
5 1/2 x 13 **£28.53**
7 x 15 **£30.75**

MOTORSPORT
5 x 10 **£20.01**
6 x 10 **£20.01**
5 x 12 **£23.13**
5 1/2 x 13 **£24.34**
6 x 14 **£27.09**
7 x 15 **£28.69**
8 x 15 **£31.89**

Centre Caps
Extra



8 SPOKE White
5 x 10 **£16.80**
6 x 10 **£19.26**
5 x 12 **£23.13**
5 1/2 x 13 **£21.78**
6 x 13 **£22.75**
7 x 13 **£25.04**
8 x 13 **£28.48**
6 x 14 **£25.05**
7 x 15 **£28.69**
8 x 15 **£33.78**

8 SPOKE Chrome
5 1/2 x 13 **£32.82**
6 x 13 **£34.06**
7 x 13 **£40.15**
6 x 14 **£38.75**
7 x 14 **£42.73**
7 x 15 **£44.20**
8 x 15 **£45.19**
8 x 15 **£47.73**

Centre Caps Extra



NEW STAR
Silver
5 1/2 x 13 **£59.43**
6 x 14 **£67.58**
6 1/2 x 15 **£91.14**
7 x 15 **£64.81**
8 x 14 **£72.85**
8 1/2 x 15 **£88.20**

Anthracite Polish
5 1/2 x 13 **£64.21**
6 x 14 **£72.85**
6 1/2 x 15 **£88.20**



TO ORDER TEL: 0829 70625 FAX: 0829 71002
CARRIAGE NEXT DAY £5.50 48 HRS £4.50 POST £4.00
UK CUSTOMERS MUST ADD VAT TO ALL PRICES

DYNA Silver 6 1/2 x 15 **£81.70**



HIGH PERFORMANCE WHEELS FROM YOKOHAMA

SPECIAL DEALS

on all Yokohama combinations
for Centre, Motor, Ring applications available

ATEV
RONAL R15 6x14
6x14 **£117.67**
7x15 **£168.87**
7x15 **£180.42**
7x15 **£217.42**

ATEV
RONAL R15 6x17
6x17 **£180.42**
7x17 **£231.92**

OMEGA 7x15 **£72.54**
VENTURE 8x14 **£84.32**
7x15 **£72.54**

MERC 8x15 **£82.23**
8x15 **£85.38**
7x15 **£72.54**

MERC 4 7x15 **£72.54**

SARRI (4x4) 7x15 **£72.54**

NEURDA (4x4) 7x15 **£72.54**

TO ORDER TEL: 0829 70625 FAX: 0829 71002
CARRIAGE NEXT DAY £5.50 48 HRS £4.50 POST £4.00
UK CUSTOMERS MUST ADD VAT TO ALL PRICES

ITALVOLANTI STEERING WHEELS

From experienced saddlers, ITALVOLANTI look the art of leather working... all their steering wheels are made from carefully selected and skillfully tanned leather. Hand made by highly qualified craftsmen, each steering wheel is a masterpiece in itself.

It is through the steering wheel that the driver senses and interprets with the vehicle and the road most intensively. The sense of security in always having full control over your car is complemented by a feeling of pleasure.



That's why ITALVOLANTI has taken the traditional art of the saddler and made constant refinements in the manufacture of these modern technological accessories. ITALVOLANTI was one of the first craftsmen in the world to use this innovative system. For the driver who values the individuality and superiority of a high quality craftsman product and all the same time places great importance on safe, comfortable and responsive steering. ITALVOLANTI sports steering wheels enhancing the driving experience.

- Galaxy A Prestige Leather Rim/Black Centre £154.00
- Galaxy A Prestige Leather Rim/Zetrans Centre £165.00
- Galaxy B Black with Grey Zetrans £150.00
- Galaxy C Black Leather £145.00
- Galaxy C with Logo £155.00
- Galaxy E Brnr Rim/Leather Centre £250.00
- Galaxy E with Logo £260.00
- Galaxy A/E Brnr Rim/Brnr Centre £288.00



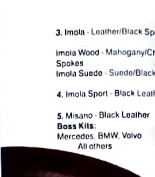
1 £145.00



2 £123.00



3 £105.00



4 £130.00



5 £142.00

INOLA

INOLA



THE ULTIMATE TYRES FOR HIGH SPEEDS AND SUPERIOR PERFORMANCE.



COMP TIA VR ZR
 * Superior handling and traction in both wet and dry conditions from combination of tread design and advanced compound technology.
 * 2 speed rated for sustained travel over 149 mph.
 * Rayon twill plies with nylon-wrapped steel belts.
 * Ultra-quick steering response and precise brake control.

SIZE	RIM WIDTH	PRICE
15"		
20x55ZR16	6.0-8.0	£90.45
22x55ZR16	6.5-9.0	£167.47
24x55ZR16	7.0-9.5	£138.87
25x55ZR16	7.0-10.0	£163.66
24x55ZR16	8.0-10.0	£104.92
17"		
275/40Zr17	8.5-10.0	£231.84
31x35ZR17	10.0-12.0	£279.45

COMP TIA VR TUBELESS

15"		
19x55VR15	5.0-7.5	£54.99
20x55VR15	5.5-8.0	£77.78
20x55VR15	5.5-8.0	£66.93
21x55VR15	5.5-8.5	£90.97
22x55VR15	6.0-9.0	£94.42
22x55VR15	6.0-9.0	£98.04
25x55VR15	6.5-10.0	£135.70
20x55VR15	5.0-7.5	£72.35
19x50VR15	5.5-7.5	£59.08
20x55VR15	6.0-8.0	£83.21
22x55VR15	6.5-9.0	£107.09
24x55VR15	7.0-9.5	£150.50
26x55VR15	7.5-10.5	£160.59

4 X 4 TYRES
 BFGoodrich provides a total performance tyre package for 4x4 vehicle owners. When it comes to taking on the rough bits, it's real that there's nothing on earth like BFGoodrich tyres.

TIA HR TUBELESS	BLACK SIDEWALL	RAISED WHITE LETTERS
185/70HR13	80H 5.0-7.0	£42.33
185/60HR13	80H 5.0-7.0	£41.20
20x50HR13	86H 5.5-6.5	£50.46
14"		£58.17
185/70HR14	88H 5.0-7.0	£44.67
195/70HR14	91H 5.0-7.0	£47.85
205/70HR14	94H 5.5-7.5	£59.65
185/60HR14	82H 5.0-7.0	£42.43
195/60HR14	85H 5.0-7.5	£46.71
215/60HR14	91H 5.5-7.5	£61.33
225/60HR14	94H 6.0-8.5	£64.71
235/60HR14	97H 7.0-9.5	£81.14
15"		£81.21
185/65HR15	91H 5.0-7.0	£46.41
195/65HR15	91H 5.0-7.5	£47.75
21x55HR15	99H 5.5-8.0	£67.50
195/50HR15	87H 5.0-7.0	£47.50
205/50HR15	91H 5.5-8.0	£55.35
215/50HR15	93H 5.5-8.5	£70.57
225/50HR15	96H 6.0-9.0	£82.29
23x55HR15	98H 6.0-9.0	£87.39
24x55HR15	102H 6.5-9.5	£91.77
25x55HR15	107H 7.0-11.0	£94.68
26x50HR15	99H 7.5-10.0	£93.96
29x50HR15	105H 8.0-11.0	£105.62

4 X 4 TYRES	PR	MUD TERRAIN
15"		
27x65SR14LT	6 5.5-7.5	£69.10
16"		
LT 255/75R16	6 5.5-7.0	£71.27
LT 255/75R16	6 6.0-7.5	£81.40
30x95SR16LT	6 6.5-8.5	£81.40
31x105SR16 (DRIVEN)	6 7.0-8.0	£87.19
32x115SR16LT	6 8.0-10.0	£94.42
33x142SR16LT	6 8.0-11.0	£111.07
35x142SR16LT	6 8.0-11.0	£102.34
17"		
LT 225/75R16	8 6.0-7.0	£88.64
LT 265/75R16	8 6.0-7.0	£94.09
LT 265/75R16	8 6.5-8.0	£103.11
LT 275/75R16	8 7.0-8.0	£110.34
LT 235/85R16	10 6.0-7.0	£117.58
LT 255/85R16	10 6.0-7.0	£100.84
LT 255/85R16	10 6.0-8.0	£110.44

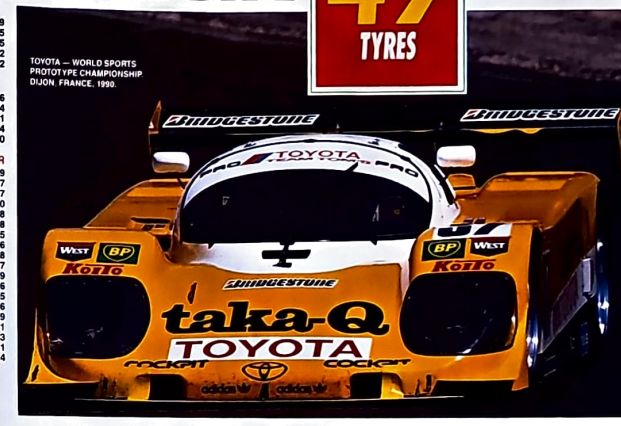


RE71 - 60 SERIES - HR	£58.29
18x50 R13 80H RE71	£77.85
20x56 R14 82H RE71	£80.15
19x50 R14 85H RE71	£87.12
20x56 R14 87H RE71	£78.32

60 SERIES - VR	£76.16
18x50 R14 82V RE71	£84.64
19x50 R14 85V RE71	£93.01
20x56 R15 87V RE71	£99.84
20x56 R15 89V RE71	£107.40

55/50/45/40/35 SERIES - VRZR	£82.99
18x52ZR15 RE71	£102.57
20x55ZR16 RE71	£102.20
19x50ZR15 RE71	£110.78
20x55ZR15 RE71	£119.28
22x55ZR15 RE71	£136.05
19x50ZR16 RE71	£129.06
20x55ZR16 RE71	£128.78
22x55ZR16 RE71	£175.47
25x55ZR15 RE71	£185.56
22x45ZR17 RE71	£180.75
24x45ZR16 RE71	£208.06
22x45ZR17 RE71	£209.49
24x45ZR17 RE71	£212.51
25x45ZR17 RE71	£255.53
30x55ZR17 RE71	£483.81
20x55ZR15 ER90	£109.14

PSR RE71 (71 GKZ)
 ER90



RADIAL STEEL CAR - 70 SERIES - HR	£27.51
165/70 R10 70H SF310	£38.64
175/70 R13 82H SF373	£43.87
185/70 R13 85H SF373	£42.42

RADIAL STEEL CAR - 60 SERIES - VR	£55.86
185/60 R14 82V SF350	£82.94
195/60 R14 85V SF350	£81.08
20x56 R14 88V HRV	£89.01
20x56 R15 86V SF350	£70.75
22x56 R15 82V SF350	£78.84

RADIAL STEEL CAR - 55/50 SERIES - VR	£105.08
20x56 R15 86V SF350	£89.01
20x56 R15 88V SF350	£89.01
22x56 R15 82V SF350	£139.37

RADIAL STEEL CAR - 55/50 SERIES - HR	£70.36
185/60 R14 82V SF350	£57.54
20x56 R14 82H SF350	£50.40
19x50 R14 85H SF350	£56.61
20x56 R14 87H 13TV	£81.23



1 LVR DESERT DUELER 604 2 LVR MUD DUELER 671	£99.99
31x150SR15 105M 604V RWT	£98.76
30x55R15 105M D871 RWT	£96.26
31x150SR15 105M D871 RWT	£105.64
20x56 (60R) 105/104M 604V	£58.92
21x5R15 604V	£82.34
20x5R16 604V	£58.52
20x5R16 604V RFD	£82.92
20x5R16 610V RFD	£58.56
21x5R15 100S SF402	£58.64



TO ORDER TEL: 0829 70038
 FAX: 0829 70037
 CARRIAGE NEXT DAY £5.50
 HRS £4.50 POST £4.00
 UK CUSTOMERS MUST ADD VAT TO ALL PRICES