



Spare Parts Catalog

16 S 109

Material number: 1304.050.412

ZF Friedrichshafen AG

Hauptverwaltung

80038 Friedrichshafen

Deutschland

Telefon: +49 7541 77-0

Telefax: +49 7541 77-908000

www.zf.com

zuständiges Werk:

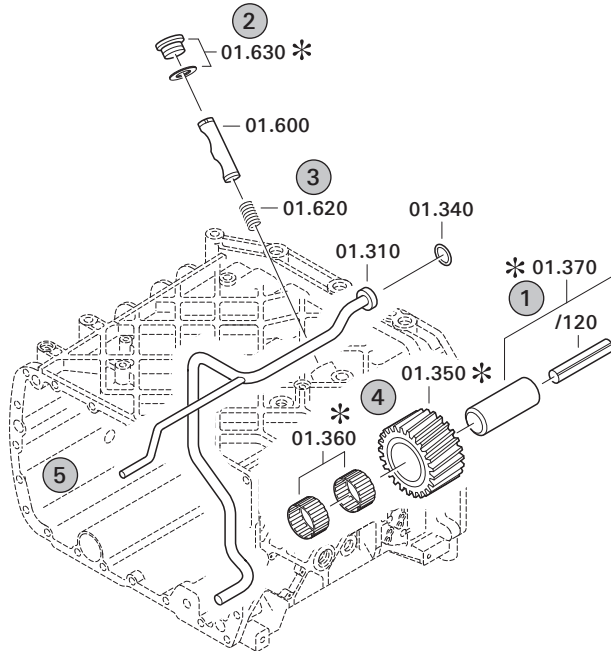
Friedrichshafen

Notes relating to the spare parts catalog

Setup of the spare parts catalog

- Cover sheet
- Technical Cover (only in SDM print)
- Overview of figures
- Figure
- Associated parts list
- Next figure
- Associated parts list
- ...

Figure and parts list



Overview of figures

Bildtafel Figure	Sachnummer Product number	Benennung (Description)	Technische Info Technical info	Description (Benennung)	Menge Quantity	Einheit Unit
068.08.17	1316.170.001	AUSLEGER	WL	SHIFT TURRET	1	Stk
068.08.06	1316.170.031	DECKEL	WL*H-H *VM	COVER	1	Stk
068.08.14	1316.170.808	DECKEL	WL*AUSL+GEH*H-H*HF160N	COVER	1	Stk
08	1316.170.441	ANSCHLUSSTEILE	WL*NG-VORB*RG-SCHL*168N *BAJONETT	CONNECTING PARTS	1	Stk

The "gap" indicates that there is no separate graphics panel (poster) for this assembly
The parts of this assembly are shown with the same mid-section number on the figure

1 Positions and subpositions

Pos.	Sachnummer Product number	Benennung (Description)	Technische Info Technical info	Description (Benennung)	Menge Quantity	Einheit Unit
0370	1315.201.054	RUECKLAUFBOLZEN	KPL.16S151*SG*L= 79	REV.IDLER SHAFT	1	Stk
/0120	0631.329.293	SPANNSTIFT		SLOT. PIN	1	Stk

Positions marked with "/" are the individual items of a completion
For example: Position 0370 contains a centering pin with the position /0120

2 Combinations with standardized parts

Pos.	Sachnummer Product number	Benennung (Description)	Technische Info Technical info	Description (Benennung)	Menge Quantity	Einheit Unit
0630		VERSCHL.SCHR.		SCREW PLUG	1	Stk
	0636.302.067	VERSCHL.SCHR.		SCREW PLUG	1	Stk
	0634.801.249	DICHTRING	A 26 X 31	SEALING RING	1	Stk

The parts list shows the components included in the combination of standardized parts

3 Depiction of position/item number on the figure and in the parts list

01.620 - on the figure 01 relates to the assembly in which the position is included. Due to program-related reasons, it is shown on the figure.

0620 - in the parts list

Pos.	Sachnummer Product number	Benennung (Description)	Technische Info Technical info	Description (Benennung)	Menge Quantity	Einheit Unit
0620	0732.040.736	DRUCKFEDER		COMPRESSION SPRING	1	Stk

4 *-Positions

Positions marked with an * are optional i.e. inclusion in the parts list is not mandatory.
The following note is shown on the figure

je nach Stücklistenausführung
depending on spec. number
*
suivant la nomenclature
secondo la distinta base

5 Parts, dotted display

Parts with dotted display on the figure are only used for orientation of other parts



Pos.	Information	Amendment number
001	Use case -----	
002	Customer BMC Samayi ve Ticaret A.S.	
003	City Izmir	
004	DUNS 62-812-1097	
005	Vehicle / Apparatus -----	
006	Sales Name PRO832	
007	Manufacturer BMC Samayi ve Ticaret A.S.	
008	Engineering Name	
009	Product Use TRUCK	
010	Vehicle/Hardware Type ROAD TRACTOR	
011	SOP	
012	Engine	
013	Sales Designation C300-20 E2	
014	Manufacturer Cummins Engine Co.	
015	Drivetrain type DIESEL	
016	Eng.Displ. 8300 cm3	
017	Cylinder 6	
018	Nom. power 221 kW	
019	RPM at nom. power 2200 1/min	
020	Nom. torque 1120 Nm	
021	RPM at nom. torque 1400 1/min	
023	Motorstamm 802056 Text-document 000000293776	
024	Classification use case -----	
025	DESIGNATION, CLUTCH 14-2 LP	
026	MANUFACTURER, CLUTCH LIPE-ROLLWAY	
027	TOTAL NUMBER OF WHEELS 4	
028	NUMBER OF DRIVING WHEELS 2	
029	DYNAMIC TYRE RADIUS 509 mm	
030	REAR AXLE RATIO 4.56	
034	PERMISS.GROSS VEHICLE WEIGHT 40 t	
036	Use case -----	
037	Customer BMC Samayi ve Ticaret A.S.	



Pos.	Information	Amendment number
038	City Izmir	
039	DUNS 62-812-1097	
040	Vehicle / Apparatus -----	
041	Sales Name M244	
042	Manufacturer BMC Samayi ve Ticaret A.S.	
043	Engineering Name	
044	Product Use TRUCK	
045	Vehicle/Hardware Type ROAD TRACTOR	
046	SOP	
047	Engine	
048	Sales Designation	
049	Manufacturer Cummins Engine Co.	
050	Eng.Displ.	
051	Cylinder	
052	Nom. power 194 kW	
053	RPM at nom. power 2400 1/min	
054	Nom. torque 936 Nm	
055	RPM at nom. torque 1500 1/min	
056	Classification use case -----	
057	DESIGNATION, CLUTCH 14-2 LP	
058	MANUFACTURER, CLUTCH LIPE-ROLLWAY	
059	TOTAL NUMBER OF WHEELS 6	
060	NUMBER OF DRIVING WHEELS 2	
061	DYNAMIC TYRE RADIUS 522 mm	
062	REAR AXLE RATIO 4.56	
066	PERMISS.GROSS VEHICLE WEIGHT 40 t	
068	Product description -----	
069	INSTALLATION POS TRANSMISSION HORIZONTAL LEFT	
070	TRANSMISSION ATTACHMENT FLANGE-MOUNTED	
071	RATIO, BOTTOM GEAR 13.41	
072	RATIO, TOP GEAR 1	
073	SET OF RATIOS DG	



Pos.	Information	Amendment number
074	RATIO, 1ST GEAR 13.41	
075	RATIO, 2ND GEAR 11.35	
076	RATIO, 3RD GEAR 9.56	
077	RATIO, 5TH GEAR 6.69	
078	RATIO, 4TH GEAR 8.09	
079	RATIO, 7TH GEAR 4.72	
080	RATIO, 9TH GEAR 3.35	
081	RATIO, 11TH GEAR 2.39	
082	RATIO, 6TH GEAR 5.66	
083	RATIO, 13TH GEAR 1.67	
084	RATIO, 15TH GEAR 1.18	
085	RATIO, 8TH GEAR 4	
086	RATIO, 1ST GEAR REVERSE 12.69	
087	RATIO, 10TH GEAR 2.84	
088	RATIO, 12TH GEAR 2.02	
089	RATIO, 14TH GEAR 1.42	
090	RATIO, 16TH GEAR 1	
091	RATIO, 2ND GEAR REVERSE 10.74	
092	UEBERSETZUNG PLANETENSATZ 4	
093	NUMBER OF PLANETARY GEARS 5	
095	DESIGN, SHIFT SYSTEM TURNING SHAFT	
096	POSITION, GEAR SHIFT SYSTEM HORIZONTAL RIGHT	
097	DESIGN, SHIFT PATTERN H-H	
098	VERSION TUBE R/C PLASTIC PIPING	
103	DESIGN, SEPARATING CLUTCH FULL-SYNCHRONIZED	
104	REFERENCE LENGTH INPUT SHAFT 286 mm	
105	STANDARD TYPE INPUT SHAFT SAE	
106	NUMBER OF WEDGES INPUT SHAFT 10	
107	VERSION OF INPUT SHAFT FORM C	
108	NOMINAL DIAMETER INPUT SHAFT 1.75 in	
109	DIAMETER, JOURNAL, INPUT SHAFT 25 mm	
110	TYPE FIT SPIGOTS INPUT SHAFT F7	



Pos.	Information	Amendment number
111	DIAMETER SHAFT OF INPUT SHAFT 44 mm	
112	BUSH VARIANT INPUT SHAFT WITHOUT GROOVE	
113	DIAMETER, RELEASE FLANGE 57 mm	
114	TYPE FIT RELEASE BEARING FLA. E8	
115	DICHTKAPPE AUSRUECKLAGERFL n	
116	DESIGN BEARING OUTPUT STANDARD SUSPENSION	
117	OUTER DIA. OUTPUT FLANGE RA 180 mm	
118	NO.OF SCREWS OUTPUT FLANGE RA 4	
121	DIA. THREAD OUTPUT FL. SCR. RA M14	
123	REF. LENGTH OUTPUT FLANGE RA 103 mm	
124	THREAD PITCH OUTPUT FL SCR. RA 1.5 mm	
125	THREAD LENGTH OUTP.FL SCREW RA 50 mm	
127	DIMENSION SHIFT TURRET DIST. 214 mm	
128	MEAS. LOC. SHIFT TURRET DIST. CENTRE BALL JOINT	
131	RADIUS 1 SHIFT LEVER 75 mm	
134	LOCATION GEAR SHIFT LEVER TAPER INSIDE	
137	LEVER POSITION SHIFTING OUTPUT A	
139	LOCATION SUPPORTING POINT J	
143	ADJUST.DIMENSION DRAW BAR Z 250 mm	
147	SPRING ARRANGEMENT Q1	
148	TOOLING SET OF SPRINGS W072	
149	SPRING FORCE DETENT PLUNGER RG 120 N	
150	SPRING FORCE, GEAR DETENT NG+GG 158 N	
151	DESIGN JOINT BALL JOINT NOT SPRING-LOAD	
152	DESIGN ASSEMBLY BALL JOINT JOINT POS.X	
153	SELECTION PATTERN VARIANT GEAR SHIFT PATTERN 2	
155	DESIGN, SHIFT PATTERN D2	
156	GRIFF-FORM HANDSCHALTHEBEL 1 1B	
157	AUSF BEFEST HANDSCHALTHEBEL 1 M10+WASHER	
158	HINWEIS PNEUMATIK VALVE	
161	SWITCH, REVERSE GEAR y	
162	DESIGN, RG (REV.GEAR) SWITCH OPENING SWITCH	



Pos.	Information	Amendment number
163	NOTE ON SWITCH, REVERSE GEAR GEAR SHIFT RAIL	
164	PROT. CAP SWITCH, REVERSE GEAR y	
165	DESIGN, CONNECTION, RG SWITCH BAYONET+PLUG DIRECT	
166	SWITCH, NEUTRAL GEAR y	
167	DESIGN,NG(NEUTRAL GEAR)SWITCH OPENING SWITCH	
168	PROT.CAP SWITCH, NEUTRAL GEAR y	
169	DESIGN, CONNECTION, NG SWITCH BAYONET+PLUG DIRECT	
170	FUNCTION OF R/C SWITCH GP	
171	NORMENART HOHLFLANSCH HEXAGON SCREW	
172	DESIGN, GP SWITCH CLOSING	
173	PROTECTING CAP GP SWITCH y	
174	DESIGN, CONNECTION, GP SWITCH BAYONET+PLUG DIRECT	
185	ATTACHED AGRREGATES 1 WITHOUT WSK	
186	FUNCTION OF S/G SWITCH GV	
187	DESIGN, GV SWITCH WITHOUT GROOVE	
188	PROTECTING CAP GV SWITCH n	
193	ATTACHM.POS.HEAT EXCHANGER WITHOUT GROOVE	
195	VER. TRANSMISSION VENTILATION BREATHER	
198	REF.LENGTH,RELEASE BEAR.FLAN 170 mm	
200	ATTACHMENT VARIANT, RETARDER WITHOUT GROOVE	
228	DESIGN PULSE SENSOR INPUT WITHOUT GROOVE	
229	PROT.CAP PULSE SENSOR INPUT n	
234	NO.OF PULSES PULSE SENSOR SFI H68 8 IMP/U	
236	DESIGN PULSE SENSOR SFI H68 WITH	
238	PROT.CAP PULSE SENSOR SFI H68 y	
239	DESIG,CONN,PULSE SENS. SFI H68 BAYONET+PLUG DIRECT	
267	NOTE ON OIL FILL FILL IN OVERFLOW	
268	POSITION, OIL FILLER HOUSING, LH SIDE	
270	OIL CAPACITY, GEARBOX 9 dm3	
272	OIL GRADE PERMISSIBLE ACC. TO TE-ML02	
274	COLOR NOT	
278	CODING OUTER CONSERVATION KA2	



Pos.	Information	Amendment number
279	SCOPE OUTER CONSERVATION T	
280	CODING INNER CONSERVATION KI1	
281	CONSERVATION SPECIFICATION ZFN 916	
282	Documents -----	
283	GEARBOX Drawing 1304.050.402	
284	Drawing 1304.149.012	
285	Drawing 1304.172.171	
286	16-GANG-GETR. Drawing 1304.600.092	
287	Drawing 1304.607.002	
288	1304.051.491 Drawing 1304.051.491	
289	Alias ID -----	
290	BMC Samayi ve Ticaret A.S. 52RS001266	

Assembly group overview

Material number: 1304.050.412

16 S 109 /

Page 1 from 2



Graphics	Pos.	Material number	Name	Quantity	Amend. no.	Techn. Info.
062.01.11-1	110	1304.101.264	GEARBOX HOUSING	1		
062.01.11-1	118	1304.101.402	CONNECTING PARTS	1		
062.01.84-1	120	1304.101.929	GEARBOX HOUSING	1		
062.01.90-1	122	1304.101.800	CLOSING COMPONENTS	1		
062.02.40-1	140	1304.102.441	CONNPLATE	1		
062.02.82-1	150	1304.102.805	INPUT SHAFT	1		
062.02.03-1	910	1304.102.125	INPUT SHAFT	1		
062.03.80-1	180	1304.103.804	LAYSHAFT	1		
062.03.05-1	920	1304.103.062	LAYSHAFT	1		
062.04.05-1	930	1304.104.120	MAIN SHAFT	1		
062.06.22-1	230	1304.106.123	GEAR SHIFT SYSTEM	1		
062.06.46-1	238	1304.106.444	CONNECTING PARTS	1		
062.07.03-1	282	1304.107.804	GEAR SHIFT HOUSING	1		
062.07.03-1	910	1304.107.210	GEAR SHIFT HOUSING	1		
062.07.49-1	914	1304.107.531	GEAR SHIFT SHAFT	1		
062.08.02-1	926	1304.170.003	SHIFT TURRET	1		
062.08.02-1	930	1304.170.017	COVER	1		
062.08.02-1	934	1304.170.804	COVER	1		
062.12.02-1	922	1304.149.121	SET OF SPRINGS	1		
062.14.13-1	320	1304.122.527	SUPPORT	1		
062.14.13-1	330	1304.122.800	SUPPORT	1		
062.40.01-1	500	1304.112.006	GV-SHIFT SYSTEM	1		
062.40.40-1	504	1304.112.409	CONNECTING PARTS	1		
062.43.02-1	20	1304.131.070	GP HOUSING	1		
062.43.40-1	30	1304.131.400	CLOSING COMPONENTS	1		
062.43.02-1	512	1304.131.825	GP HOUSING	1		
062.44.06-1	40	1304.132.137	PLANETARY DRIVE	1		
062.44.59-1	50	1304.132.509	PLANETARY DRIVE	1		
062.44.06-1	60	1304.132.808	PLANETARY DRIVE	1		
062.45.05-1	70	1304.133.012	SYNCHRONIZER	1		
062.45.05-1	80	1304.133.404	SYNCHRONIZER	1		

Assembly group overview

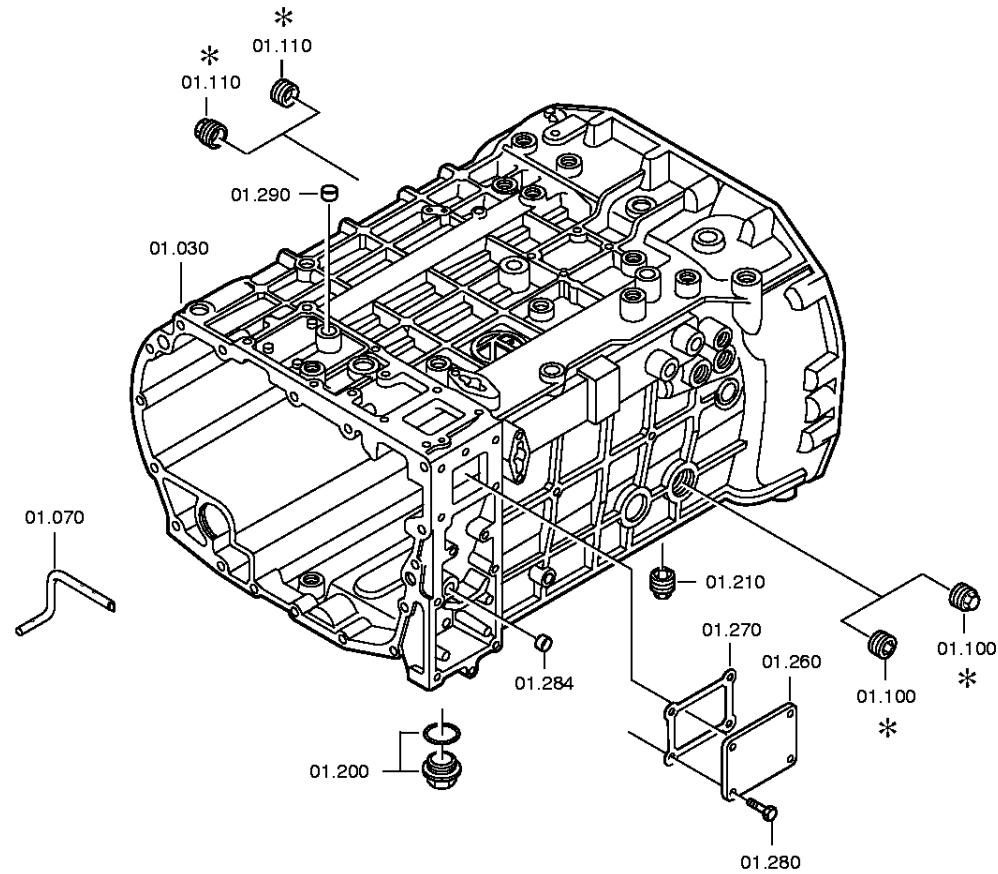
Material number: 1304.050.412

16 S 109 /

Page 2 from 2



Graphics	Pos.	Material number	Name	Quantity	Amend. no.	Techn. Info.
062.46.05-1	90	1304.134.033	GP SHIFT SYSTEM	1		
062.46.40-1	554	1304.134.408	CONNECTING PARTS	1		
062.47.02-1	190	1304.135.005	SPEEDOMETER COVER	1		
062.47.02-1	194	1304.135.803	SPEEDOMETER COVER	1		
062.57.05-1	390	1304.145.009	RANGE SELECTION	1		
062.95.43-1	12	6007.101.476	CONNECTING PARTS	1		
062.98.41-1	40	6005.183.475	GEAR SHIFT LEVER	1		

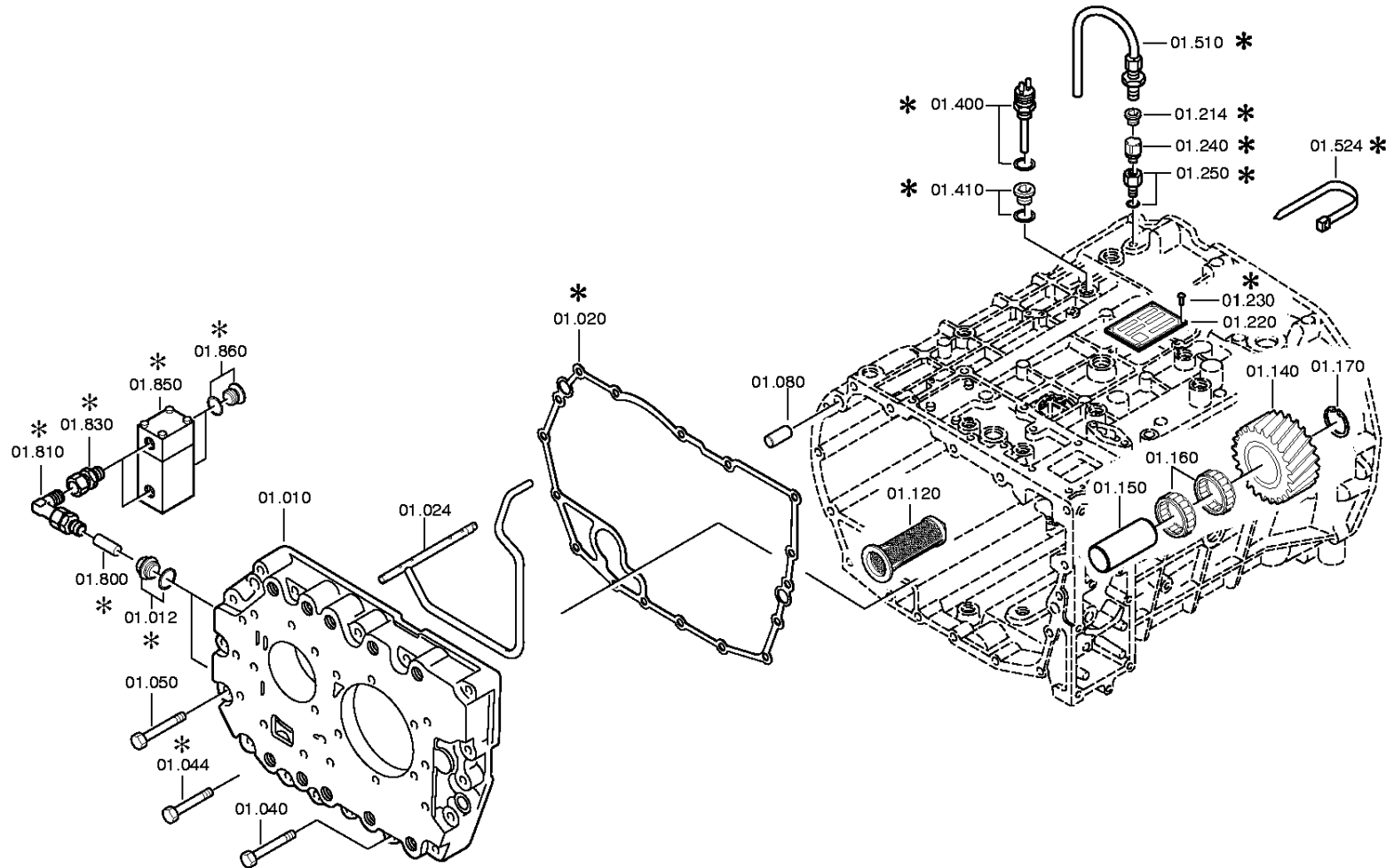


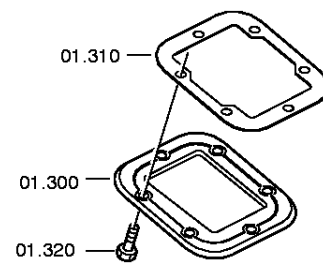
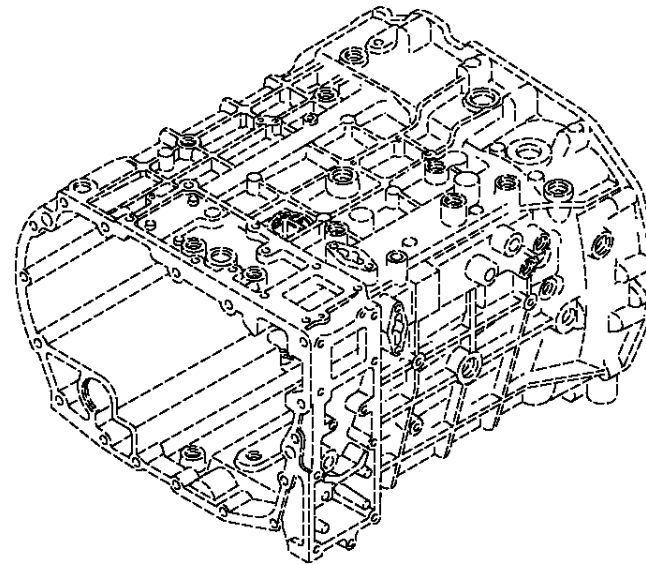
Plant

Page 2 from 3

Material number: 1304.050.412
Plant: 062.01.84-1
GEARBOX HOUSING

16 S 109 /
GEARBOX HOUSING





Parts list

Page 1 from 2

Material number: 1304.050.412

16 S 109 /

Plant: 062.01.11-1

Material-assembly-group-no: 1304.101.264



Pos.	Material number	Customer material	Name	Quantity	ME	Amend. no.	Techn. Info.	Weight	Rep kit	Alternative material
10	1304.301.413		HOUSING I	1		C01005767F10	9/16S109	0,000		
12	---		SCREW PLUG	2			45N.M*DICHTRING M16X1,5	0,000		
---	0636.100.794		SCREW PLUG	2		Z00010111711	M16X1,5	0,000		
---	0634.801.044		SEALING RING	2			16X20	0,010		
20	0501.321.065		GASKET	1		C01005767F10		0,000		
24	1304.201.058		PIPE	1			KPL. IN 1304 201 052(1)	0,000		
30	1304.201.100		GEARBOX HOUSING	1		C01007176E10	KPL.WA	0,000		
40	0736.300.123		HEXAGON BOLT	3			M10X70 M10X70	0,000		
44	0736.300.125		HEXAGON BOLT	1		Z00009403310	M10X65 M10X65	0,000		
50	0736.300.123		HEXAGON BOLT	13			M10X70 M10X70	0,000		
70	1304.301.269		PIPE	1				0,000		
80	0631.306.229		CYLINDRICAL PIN	2			16X36	0,000		
100	---		SCREW PLUG	1		Z00010112111	60N.M*DICHTRING M24X1,5	0,000		
---	0636.304.088		SCREW PLUG	1		Z00010112110	M24X1,5	0,000		
---	0730.008.637		SEALING RING	1		Z00010112110	A24X29	0,000		
110	---		SCREW PLUG	1			50N.M*O.DICHTRING M24X1,5KEG	0,000		
---	0736.300.221		SCREW PLUG	1		Z00012495111	M24X1,5KEG M24X1,5KEG	0,000		
120	0501.318.802		SCREEN INSERT	1		C01000945C10		0,000		
140	1304.305.040		REVERSE IDLER GEAR	1			Z21 IN 1304 305 032(1)	0,000		
150	1304.305.030		PIN	1				0,000		
160	0750.115.974		ROLLER CAGE	2			40,0X60,0X26,0	0,000		
/10	0735.358.192		ROLLER CAGE	1			40,0X60,0X26,0 FA.INA	0,000		
/20	0735.358.338		NEEDLE SLEEVE	1			40,0X60,0X26,0 FA.NRB	0,000		
170	0630.502.022		RETAINING RING	1			40X1,75	4,800		
200	---		SCREW PLUG	1		Z00010112213	M38X1,5	0,000		
---	0736.300.272		SCREW PLUG	1		Z00010112215	M38X1,5	0,000		
---	0634.801.321		SEALING RING	1		Z00010112215	38X44	0,001		

Parts list

Page 2 from 2

Material number: 1304.050.412

16 S 109 /

Plant: 062.01.11-1

Material-assembly-group-no: 1304.101.264



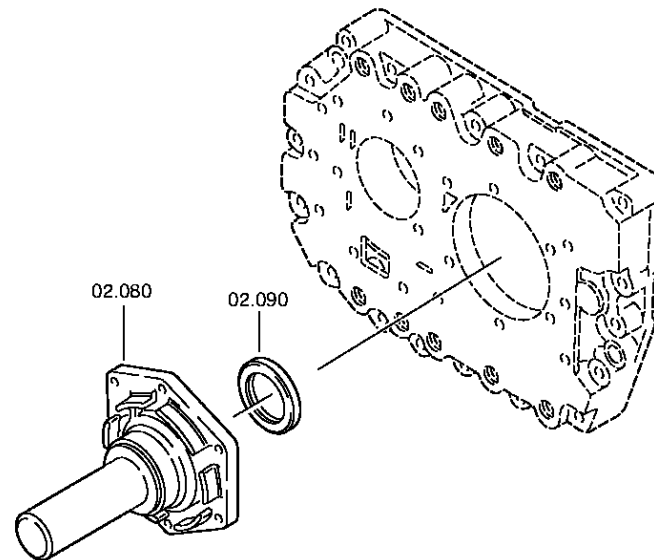
Pos.	Material number	Customer material	Name	Quantity	ME	Amend. no.	Techn. Info.	Weight	Rep kit	Alternative material
210	---		SCREW PLUG	1		Z00010112111	60N.M*DICHTRING M24X1,5	0,000		
---	0636.304.088		SCREW PLUG	1		Z00010112110	M24X1,5	0,000		
---	0730.008.637		SEALING RING	1		Z00010112110	A24X29	0,000		
220	---		TYPE PLATE	1			BOUTHEON	0,000		
---	0730.365.241		TYPE PLATE	1		C01001056E10	EINHEITSSCH. VERDREHSICHER	0,000		
---	0730.365.246		TYPE PLATE	1		C01004699E10	EINHEITSSCH. VERDREHSICHER	0,000		
230	0731.300.027		BLIND RIVET	4		Z00007904811		0,000		
240	---		BREATHER	1			M10X1KEG	0,000		
---	0501.218.540		BREATHER	1				0,000		
300	1324.301.165		COVER	1		Z00009633112		0,000		
310	1290.301.140		GASKET	1			ENTHALT.IN 1290 301 071(1)	0,000		
320	0636.016.403		HEXAGON BOLT	6		Z00007058114	M10X22	0,000		
410	---		SCREW PLUG	1		Z00010111513	35N.M*DICHTRING M18X1,5	0,000		
---	0636.100.791		SCREW PLUG	1		Z00010111521	M18X1,5	0,000		
---	0634.801.062		SEALING RING	1		Z00010111521	18X24	0,001		

Plant

Page 1 from 3

Material number: 1304.050.412
Plant: 062.02.40-1
INPUT SHAFT

16 S 109 /
CONNPLATE

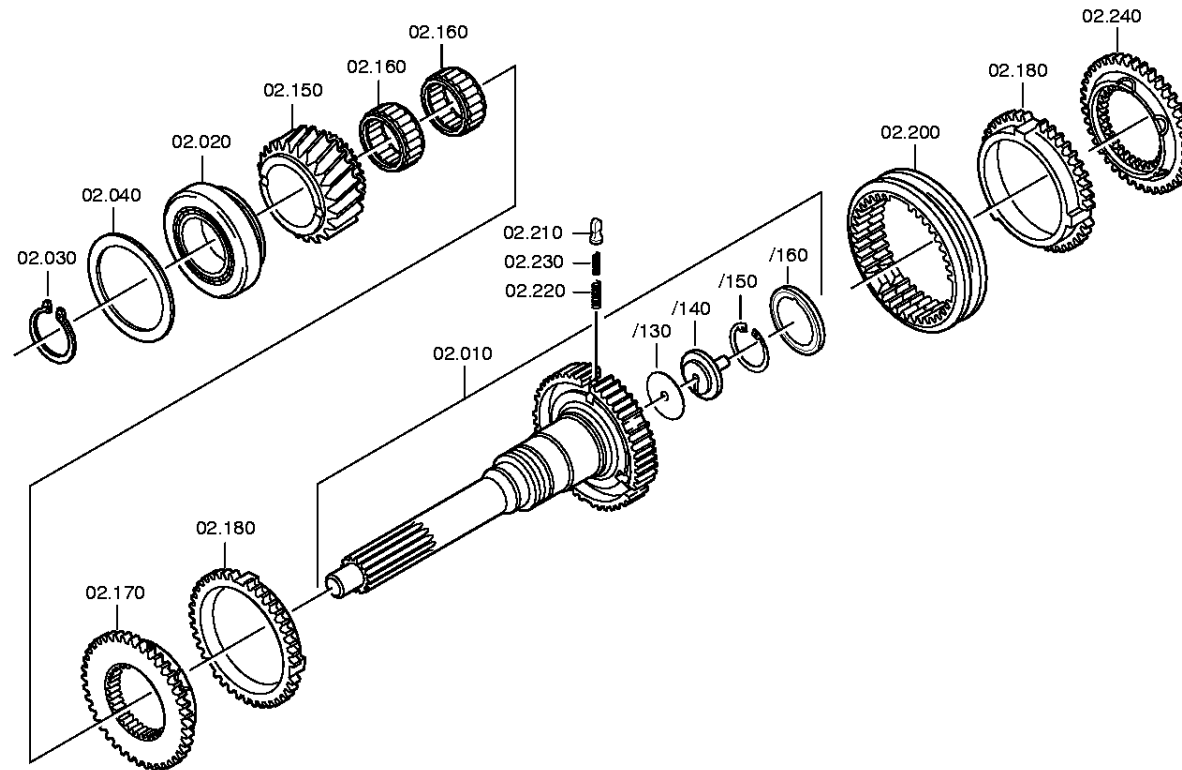


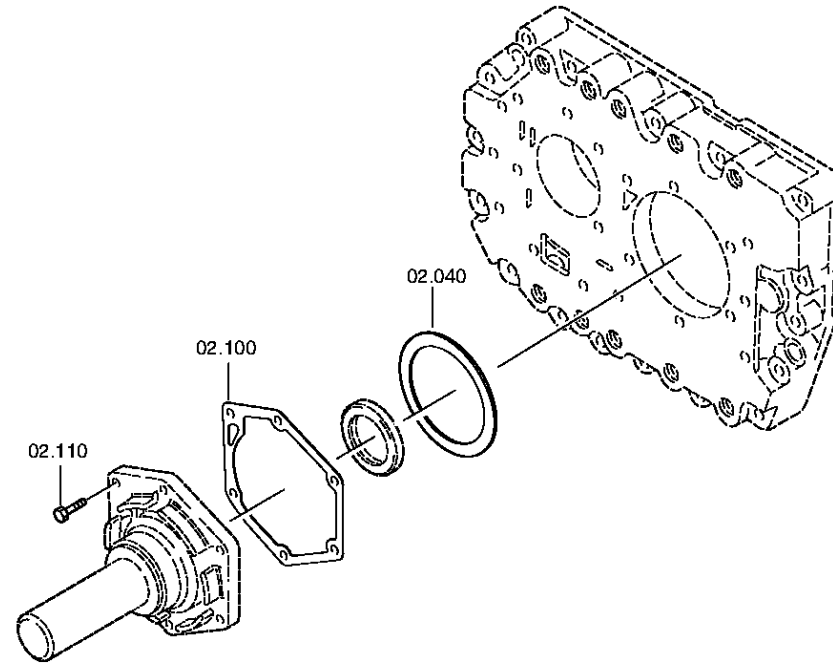
Plant

Page 2 from 3

Material number: 1304.050.412
Plant: 062.02.03-1
INPUT SHAFT

16 S 109 /
CONNPLATE





Parts list

Page 1 from 3

Material number: 1304.050.412

16 S 109 /

Plant: 062.02.40-1

Material-assembly-group-no: 1304.102.441



Pos.	Material number	Customer material	Name	Quantity	ME	Amend. no.	Techn. Info.	Weight	Rep kit	Alternative material
10	1304.202.260		INPUT SHAFT	1		Z00005256911	KPL.	0,000		
/130	0730.005.801		WASHER	1			A=2,00	0,000		
/140	1304.302.440		COVER	1				0,000		
/150	0630.502.063		RETAINING RING	1			58X2	10,400		
/160	0501.311.146		OIL DAM	1				0,000		
20	0750.117.079		TAROLLBEARING	1			66,6X117,4X30,1	0,000		
30	---		RETAINING RING	1			S= 3,70- 4,00(ABSTUFUNG:0,05MM)	0,000		
---	0730.501.360		RETAINING RING	1				0,000		
---	0730.501.359		RETAINING RING	1			A=3,95 IN 0730 501 232(2)	0,000		
---	0730.501.358		RETAINING RING	1			A=3,90 IN 0730 501 232(2)	0,000		
---	0730.501.357		RETAINING RING	1			A=3,85 IN 0730 501 232(2)	0,000		
---	0730.501.356		RETAINING RING	1			A=3,80 65 x 3.8	0,000		
---	0730.501.355		RETAINING RING	1			A=3,75 IN 0730 501 232(2)	0,000		
---	0730.501.354		RETAINING RING	1			A=3,70 IN 0730 501 232(2)	0,000		
40	---		SHIM	1			H= 1,60- 2,60(ABSTUFUNG:0,05MM)	0,000		
---	0730.004.812		SHIM	1			A=2,60 IN 0730 004 335(2)	0,000		
---	0730.004.811		SHIM	1			A=2,55 IN 0730 004 335(2)	0,000		
---	0730.004.810		SHIM	1			A=2,50 IN 0730 004 335(2)	0,000		
---	0730.004.809		SHIM	1			A=2,45 IN 0730 004 335(2)	0,000		
---	0730.004.808		SHIM	1			A=2,40 IN 0730 004 335(2)	0,000		

Parts list

Page 2 from 3

Material number: 1304.050.412

16 S 109 /

Plant: 062.02.40-1

Material-assembly-group-no: 1304.102.441



Pos.	Material number	Customer material	Name	Quantity	ME	Amend. no.	Techn. Info.	Weight	Rep kit	Alternative material
---	0730.004.807		SHIM	1			A=2,35 IN 0730 004 335(2)	0,000		
---	0730.004.806		SHIM	1			A=2,30 IN 0730 004 335(2)	0,000		
---	0730.004.805		SHIM	1			A=2,25 IN 0730 004 335(2)	0,000		
---	0730.004.804		SHIM	1			A=2,20 IN 0730 004 335(2)	0,000		
---	0730.004.803		SHIM	1			A=2,15 IN 0730 004 335(2)	0,000		
---	0730.004.802		SHIM	1			A=2,10 IN 0730 004 335(2)	0,000		
---	0730.004.801		SHIM	1			A=2,05 IN 0730 004 335(2)	0,000		
---	0730.004.800		SHIM	1			A=2,00 IN 0730 004 335(2)	0,000		
---	0730.005.646		SHIM	1			A=1,95 IN 0730 004 335(2)	0,000		
---	0730.005.645		SHIM	1			A=1,90 IN 0730 004 335(2)	0,000		
---	0730.005.644		SHIM	1			A=1,85 IN 0730 004 335(2)	0,000		
---	0730.005.643		SHIM	1			A=1,80 IN 0730 004 335(2)	0,000		
---	0730.005.642		SHIM	1			A=1,75 IN 0730 004 335(2)	0,000		
---	0730.005.641		SHIM	1			A=1,70 IN 0730 004 335(2)	0,000		
---	0730.005.640		SHIM	1			A=1,65 IN 0730 004 335(2)	0,000		
---	0730.005.639		SHIM	1			A=1,60 IN 0730 004 335(2)	0,000		

Parts list

Page 3 from 3

Material number: 1304.050.412

16 S 109 /

Plant: 062.02.40-1

Material-assembly-group-no: 1304.102.441



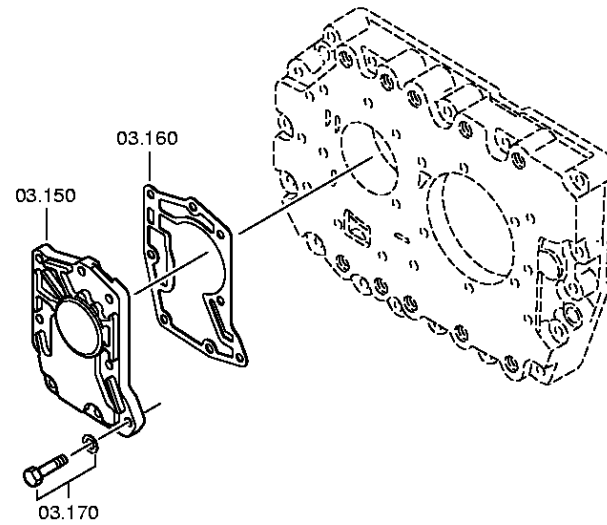
Pos.	Material number	Customer material	Name	Quantity	ME	Amend. no.	Techn. Info.	Weight	Rep kit	Alternative material
80	1304.302.316		CONNPLATE	1			ENTHALT.IN 1304 302 315(0)	0,000		
90	0750.111.149		SHAFT SEAL	1			48X65X10	0,000		
100	0501.322.828		GASKET	1		C01005749F10		0,000		
110	0636.100.797		HEXAGON BOLT	6		Z00007891319	M8X30	0,000		
150	1304.302.169		HELICAL GEAR	1			1 KONST.	0,000		
160	0735.320.816		NEEDLE CAGE	2			75,0X83,0X23,0 FA.SKF	0,000		
170	1304.302.188		CLUTCH BODY	1				0,000		
180	1304.304.680		SYNCHRORING	2				0,000		
200	1240.304.272		SLIDING SLEEVE	1			ENTHALT.IN 1240 304 403(1)	0,000		
210	1240.304.278		PRESSURE PIECE	3				0,000		
220	0732.040.385		COMPRSPRING	3				0,000		
230	0732.040.386		COMPRSPRING	3		C01007317F10		0,000		
240	1304.302.188		CLUTCH BODY	1				0,000		

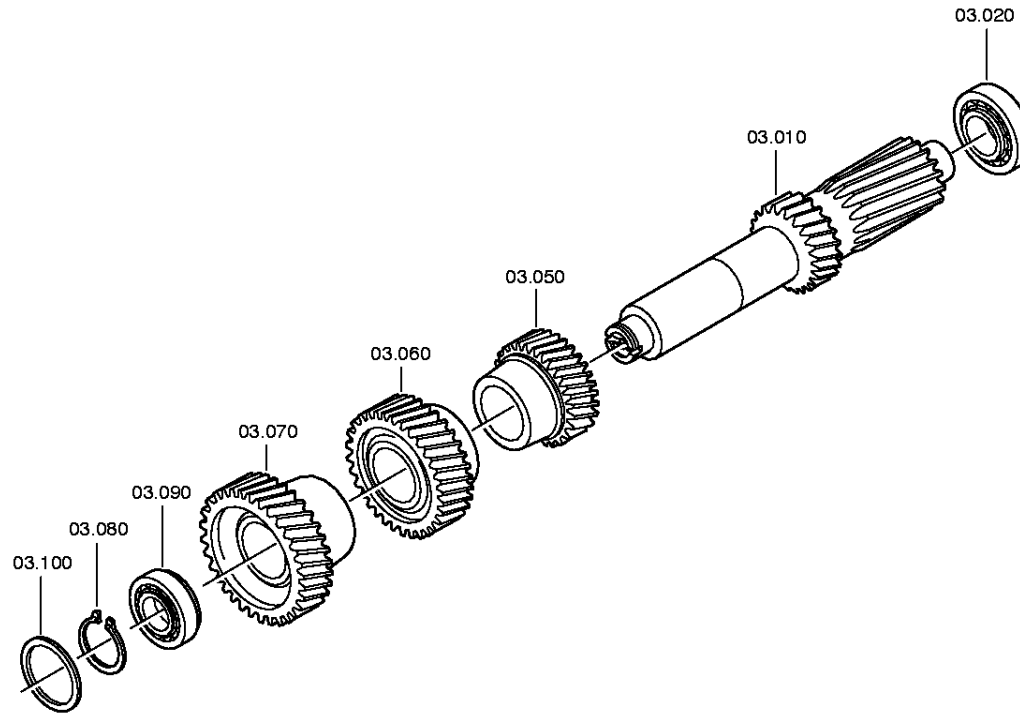
Plant

Page 1 from 2

Material number: 1304.050.412
Plant: 062.03.80-1
LAYSHAFT

16 S 109 /
LAYSHAFT





16 S 109

Parts list

Page 1 from 3

Material number: 1304.050.412

16 S 109 /

Plant: 062.03.80-1

Material-assembly-group-no: 1304.103.804



Pos.	Material number	Customer material	Name	Quantity	ME	Amend. no.	Techn. Info.	Weight	Rep kit	Alternative material
10	1304.303.277		LAYSHAFT	1			Z14 IN 1304 303 275(0)	0,000		
20	0750.117.083		TAROLLBEARING	1			50,8X95,2X27,7	0,000		
50	1304.303.214		HELICAL GEAR	1				0,000		
60	1304.303.212		HELICAL GEAR	1			ENTHALT.IN 1304 303 265(1)	0,000		
70	1304.303.273		HELICAL GEAR	1			ENTHALT.IN 1304 303 246(1)	0,000		
80	---		RETAINING RING	1			S= 1,65- 2,50(ABSTUFUNG:0,05MM)	0,000		
---	0630.531.050		RETAINING RING	1			40X2,5	0,010		
---	0630.501.287		RETAINING RING	1			40X2,45	0,000		
---	0630.531.314		RETAINING RING	1			40X2,4	0,000		
---	0630.531.315		RETAINING RING	1			40X2,3	0,000		
---	0630.531.316		RETAINING RING	1			40X2,2	0,000		
---	0630.501.135		RETAINING RING	1			40X2,1	0,000		
---	0630.531.049		RETAINING RING	1			40X2	6		
---	0630.501.301		RETAINING RING	1			40X1,9	0,000		
---	0630.501.300		RETAINING RING	1			40X1,8	0,000		
---	0630.501.031		RETAINING RING	1			40X1,75	4		
---	0630.501.259		RETAINING RING	1			40X1,65	0,000		
90	0750.118.511		TAROLLBEARING	1			40,0X80,0X32,0	0,000		
100	---		SHIM	1			H= 1,90- 3,60(ABSTUFUNG:0,05MM)	0,000		
---	0730.011.990		SHIM	1			A=3,60	0,000		
---	0730.011.989		SHIM	1			A=3,55	0,000		
---	0730.011.988		SHIM	1			A=3,50	0,000		
---	0730.011.987		SHIM	1			A=3,45	0,000		
---	0730.011.986		SHIM	1			A=3,40	0,000		
---	0730.011.985		SHIM	1			A=3,35	0,000		
---	0730.011.984		SHIM	1			A=3,30	0,000		
---	0730.011.983		SHIM	1			A=3,25	0,000		

Parts list

Page 2 from 3

Material number: 1304.050.412

16 S 109 /

Plant: 062.03.80-1

Material-assembly-group-no: 1304.103.804



Pos.	Material number	Customer material	Name	Quantity	ME	Amend. no.	Techn. Info.	Weight	Rep kit	Alternative material
---	0730.011.982		SHIM	1			A=3,20	0,000		
---	0730.011.981		SHIM	1			A=3,15	0,000		
---	0730.004.799		SHIM	1			A=3,10 IN 0730 004 595(0)	0,000		
---	0730.004.798		SHIM	1			A=3,05 IN 0730 004 595(0)	0,000		
---	0730.003.418		SHIM	1			A=3,00 IN 0730 004 595(0)	0,000		
---	0730.004.797		SHIM	1			A=2,95 IN 0730 004 595(0)	0,000		
---	0730.004.796		SHIM	1			A=2,90 IN 0730 004 595(0)	0,000		
---	0730.004.795		SHIM	1			A=2,85 IN 0730 004 595(0)	0,000		
---	0730.004.794		SHIM	1			A=2,80 IN 0730 004 595(0)	0,000		
---	0730.004.793		SHIM	1			A=2,75 IN 0730 004 595(0)	0,000		
---	0730.004.792		SHIM	1			A=2,70 IN 0730 004 595(0)	0,000		
---	0730.004.791		SHIM	1			A=2,65 IN 0730 004 595(0)	0,000		
---	0730.004.790		SHIM	1			A=2,60 IN 0730 004 595(0)	0,000		
---	0730.004.789		SHIM	1			A=2,55 IN 0730 004 595(0)	0,000		
---	0730.004.788		SHIM	1				0,020		
---	0730.004.787		SHIM	1				0,020		
---	0730.001.795		SHIM	1				25		
---	0730.003.417		SHIM	1				0,010		
---	0730.001.796		SHIM	1				19		
---	0730.003.416		SHIM	1				0,010		

Parts list

Page 3 from 3

Material number: 1304.050.412

16 S 109 /

Plant: 062.03.80-1

Material-assembly-group-no: 1304.103.804



Pos.	Material number	Customer material	Name	Quantity	ME	Amend. no.	Techn. Info.	Weight	Rep kit	Alternative material
---	0730.001.797		SHIM	1				18		
---	0730.003.415		SHIM	1				0,010		
---	0730.001.798		SHIM	1				17		
---	0730.003.414		SHIM	1				0,010		
---	0730.001.799		SHIM	1				15		
---	0730.004.786		SHIM	1				0,010		
---	0730.004.785		SHIM	1				0,010		
150	0501.004.549		PUMP	1				0,000		
160	0501.322.829		GASKET	1		C01005750F10		0,000		
170	---		HEXAGON BOLT	8		Z00007891319	M8X30	0,000		
---	0636.100.797		HEXAGON BOLT	8		Z00007891310	M8X30	0,000		
---	0630.100.251		SPRING WASHER	8		Z00007159812		0,000		

Plant

Page 1 from 1

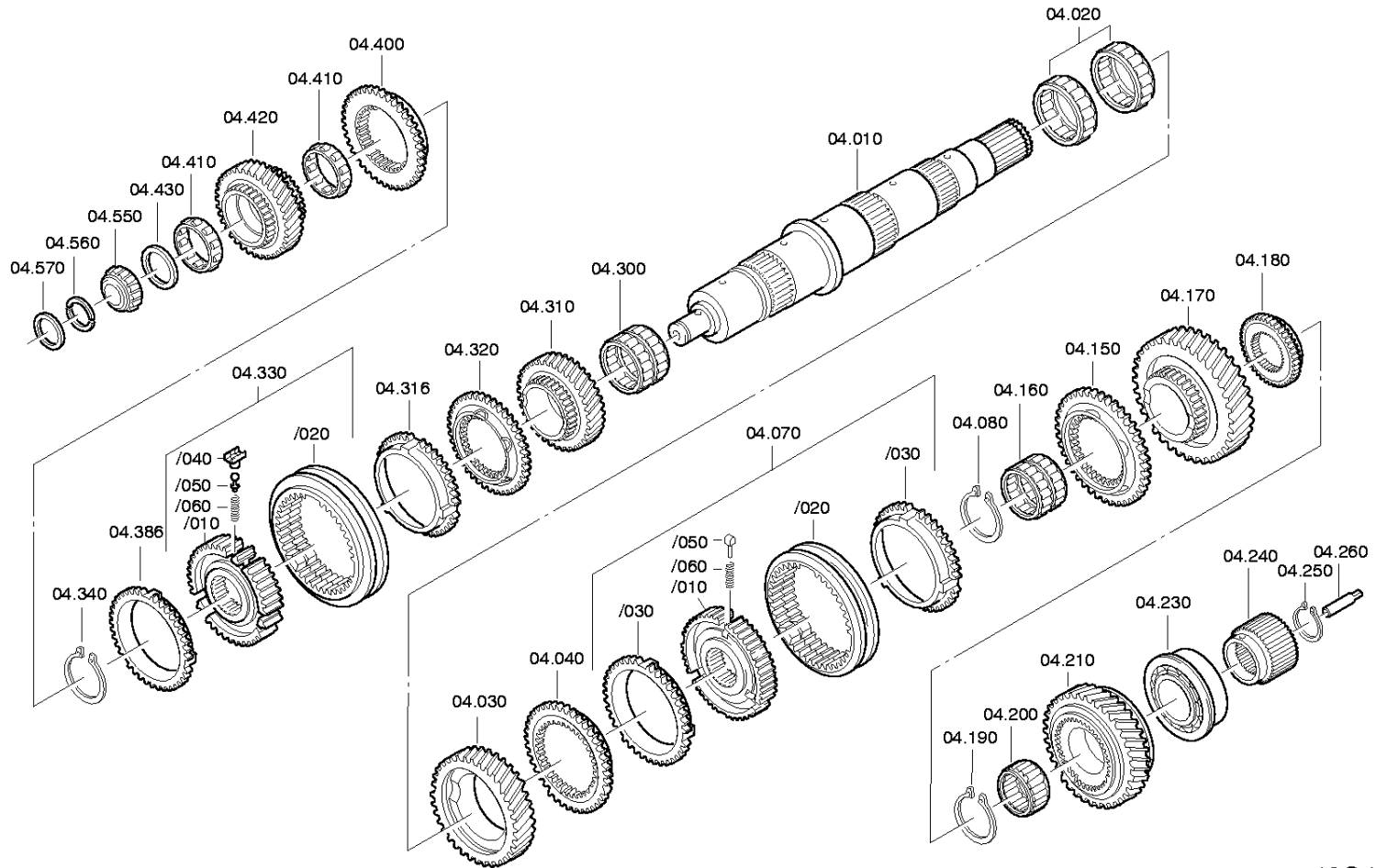
Material number: 1304.050.412

Plant: 062.04.05-1

Material-assembly-group-no: 1304.104.120

16 S 109 /

MAIN SHAFT



16 S 109

Parts list

Page 1 from 4

Material number: 1304.050.412

16 S 109 /

Plant: 062.04.05-1

Material-assembly-group-no: 1304.104.120



Pos.	Material number	Customer material	Name	Quantity	ME	Amend. no.	Techn. Info.	Weight	Rep kit	Alternative material
10	1304.304.630		MAIN SHAFT	1				0,000		
20	0750.115.971		NEEDLE CAGE	2		C01005800F10	1G 75,0X83,0X23,0	0,000		
30	1304.304.695		HELICAL GEAR	1		Z00004645110		0,000		
40	1304.304.408		CLUTCH BODY	1				0,000		
70	1304.204.049		SYNCHRONIZER	1			KPL.1+2G	0,000		
/10	1304.304.697		SYNCHROBODY	1		Z00005741712	ZF-BK131	0,000		
/20	1324.304.053		SLIDING SLEEVE	1		Z00005741712	ZF-BK131 ECOMID 1./2. SAMM	0,000		
/30	1304.304.681		SYNCHRO RING	2		C01003969B10		0,000		
/50	1297.304.436		PRESSURE PIECE	3				0,004		
/60	0732.040.409		COMPRSPRING	3		C01007317F10		0,002		
80	---		RETAINING RING	1			S= 2,50- 2,70(ABSTUFUNG:0,10MM)	0,000		
---	0630.501.071		RETAINING RING	1			70X2,7	0,000		
---	0630.501.072		RETAINING RING	1			70X2,6	0,000		
---	0630.501.046		RETAINING RING	1			70X2,5	0,020		
150	1304.304.408		CLUTCH BODY	1				0,000		
160	0750.115.224		NEEDLE CAGE	1			70,0X78,0X50,0	0,000		
170	1304.304.549		HELICAL GEAR	1			1G/Z37 IN 1304 304 357(1)	0,000		
180	1304.304.007		CLUTCH BODY	1			RG	0,000		
190	---		RETAINING RING	1			S= 2,40- 2,80(ABSTUFUNG:0,10MM)	0,000		
---	0630.501.195		RETAINING RING	1			60X2,8	0,000		
---	0630.501.194		RETAINING RING	1			60X2,7	0,000		
---	0630.501.197		RETAINING RING	1			60X2,6	0,000		
---	0630.531.141		RETAINING RING	1			60X2,5	0,000		
---	0630.501.067		RETAINING RING	1			60X2,4	0,000		
200	0750.115.973		NEEDLE CAGE	1			60,0X68,0X39,0	0,000		
210	1304.304.671		SPUR GEAR	1			Z35 IN 1304 304 360(0)	0,000		

Parts list

Page 2 from 4

Material number: 1304.050.412

16 S 109 /

Plant: 062.04.05-1

Material-assembly-group-no: 1304.104.120



Pos.	Material number	Customer material	Name	Quantity	ME	Amend. no.	Techn. Info.	Weight	Rep kit	Alternative material
230	0735.371.605		TAROLLBEARING	1			50,8X104,7X30,1 FA.NTN	0,000		
240	1304.304.608		SUN GEAR	1			Z30 IN 1304 304 088(1)	0,000		
250	---		RETAINING RING	1			S= 2,40- 3,50(ABSTUFUNG:0,05MM)	0,000		
---	0730.501.499		RETAINING RING	1			A=3,50 IN 0730 501 288(3)	0,000		
---	0730.501.498		RETAINING RING	1			A=3,40 IN 0730 501 288(3)	0,000		
---	0730.501.497		RETAINING RING	1			A=3,30 IN 0730 501 288(3)	0,000		
---	0730.501.496		RETAINING RING	1			A=3,20 IN 0730 501 288(3)	0,000		
---	0730.501.495		RETAINING RING	1			A=3,10 IN 0730 501 288(3)	0,000		
---	0630.531.058		RETAINING RING	1			45X3	0,000		
---	0730.501.297		RETAINING RING	1			A=2,90 IN 0730 501 288(3)	0,000		
---	0730.501.296		RETAINING RING	1			A=2,85 IN 0730 501 288(3)	0,000		
---	0730.501.295		RETAINING RING	1			A=2,80 IN 0730 501 288(3)	0,000		
---	0730.501.294		RETAINING RING	1			A=2,75 IN 0730 501 288(3)	0,000		
---	0730.501.293		RETAINING RING	1			A=2,70 IN 0730 501 288(3)	0,000		
---	0730.501.292		RETAINING RING	1			A=2,65 IN 0730 501 288(3)	0,000		
---	0730.501.291		RETAINING RING	1			A=2,60 IN 0730 501 288(3)	0,000		
---	0730.501.290		RETAINING RING	1			A=2,55 IN 0730 501 288(3)	0,000		

Parts list

Page 3 from 4

Material number: 1304.050.412

16 S 109 /

Plant: 062.04.05-1

Material-assembly-group-no: 1304.104.120



Pos.	Material number	Customer material	Name	Quantity	ME	Amend. no.	Techn. Info.	Weight	Rep kit	Alternative material
---	0730.501.289		RETAINING RING	1			A=2,50 IN 0730 501 288(3)	0,000		
---	0630.531.293		RETAINING RING	1			45X2,4	10		
260	1324.304.014		PIPE	1		C01004088E10	E21	0,000		
300	0750.115.971		NEEDLE CAGE	2		C01005800F10	1G 75,0X83,0X23,0	0,000		
310	1304.304.475		HELICAL GEAR	1				0,000		
316	1304.304.683		SYNCHRO RING	1				0,000		
320	1304.304.012		CLUTCH BODY	1			3+4G IN 1304 304 059(1)	0,000		
330	1304.204.050		SYNCHRONIZER	1			KPL.3+4G	0,000		
/10	1304.304.515		SYNCHROBODY	1			3+4G	0,000		
/20	1304.304.688		SLIDING SLEEVE	1		C01003606A10		0,000		
/40	1238.304.394		PRESSURE PIECE	3				0,000		
/50	1249.304.222		BALL PIN	3				0,000		
/60	0732.040.409		COMPRSPRING	3		C01007317F10		0,002		
340	---		RETAINING RING	1			S= 2,00- 2,70(ABSTUFUNG:0,10MM)	0,000		
---	0730.501.239		RETAINING RING	1		C01000567A10	A=2,70 IN 0730 501 232(2)	0,000		
---	0730.501.237		RETAINING RING	1		C01000574A10	A=2,60 IN 0730 501 232(2)	0,000		
---	0630.501.044		RETAINING RING	1			65X2,5	0,020		
---	0730.501.233		RETAINING RING	1		C01000577A10	A=2,40 IN 0730 501 232(2)	0,000		
---	0730.501.577		RETAINING RING	1		C01000575A10	A=2,30 IN 0730 501 232(2)	0,000		
---	0630.501.154		RETAINING RING	1			65X2,2	0,000		
---	0630.501.155		RETAINING RING	1			65X2,1	0,000		
---	0630.531.079		RETAINING RING	1			65X2	0,000		
386	1304.304.683		SYNCHRO RING	1				0,000		
400	1304.304.012		CLUTCH BODY	1			3+4G IN 1304 304 059(1)	0,000		
410	0750.115.299		ROLLER CAGE	2			59,5X81,5X22,0	0,000		

Parts list

Page 4 from 4

Material number: 1304.050.412

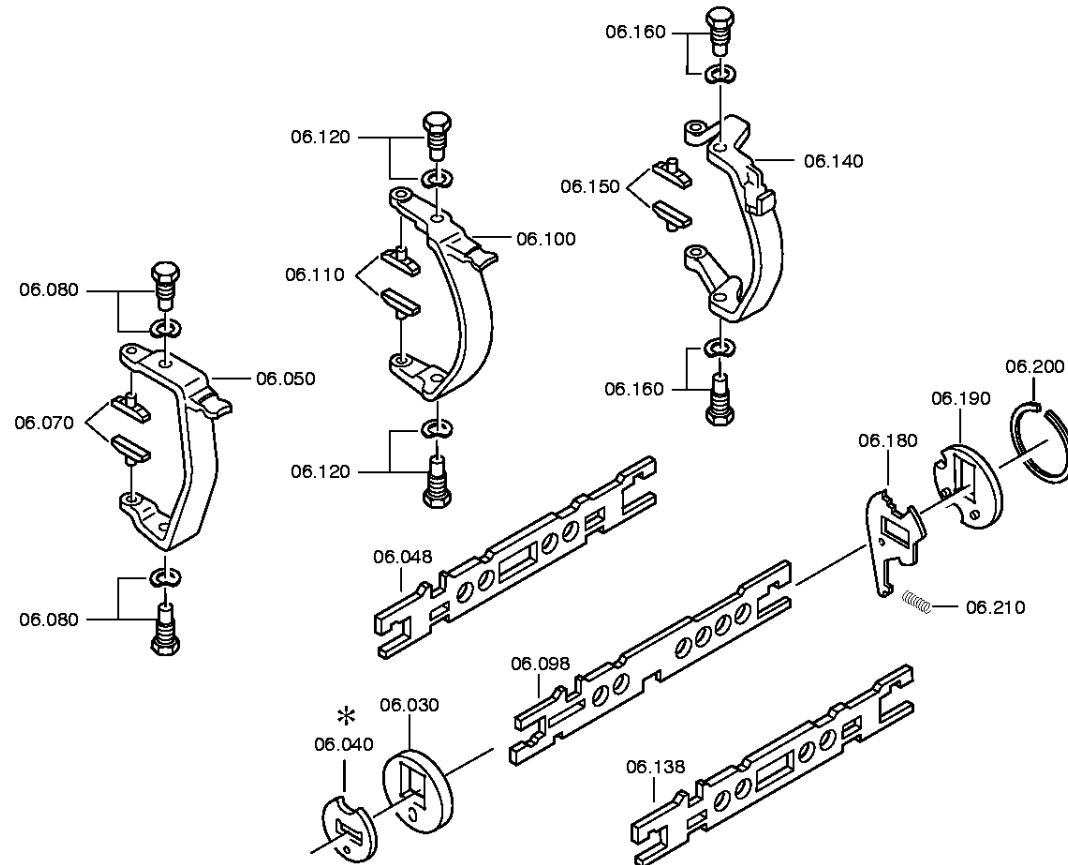
16 S 109 /

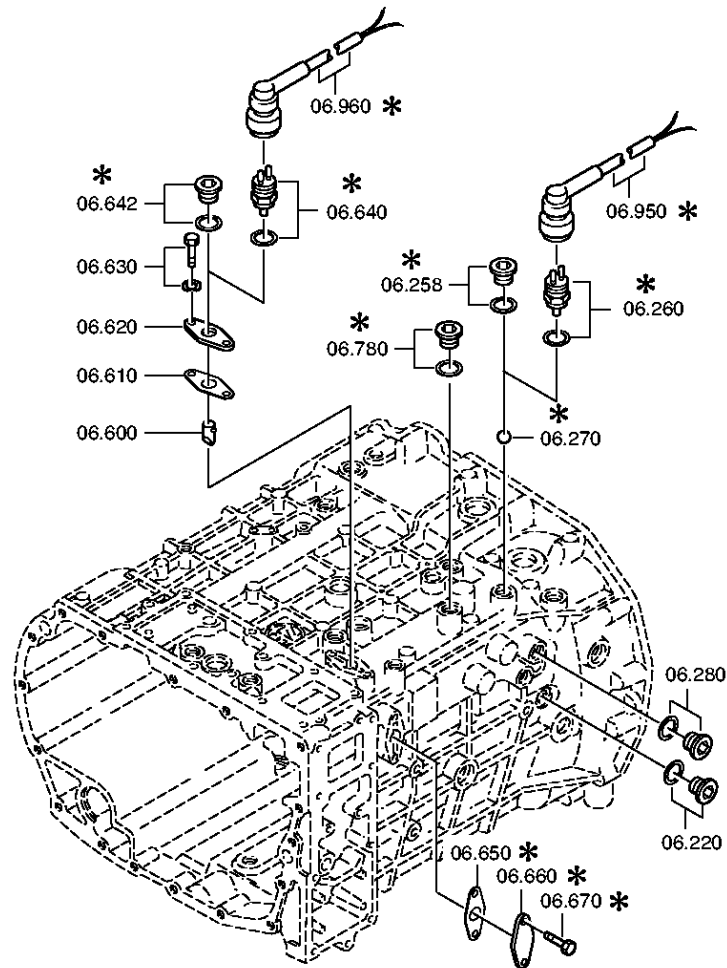
Plant: 062.04.05-1

Material-assembly-group-no: 1304.104.120



Pos.	Material number	Customer material	Name	Quantity	ME	Amend. no.	Techn. Info.	Weight	Rep kit	Alternative material
420	1304.304.516		HELICAL GEAR	1			ENTHALT.IN 1304 304 567(1)	0,000		
430	0501.314.139		THRUST WASHER	1				0,000		
550	0735.371.406		TAROLLBEARING	1			32,0X33,0 FA.SKF	0,000		
560	---		SPLIT RING	1			S= 3,40- 4,00(ABSTUFUNG:0,10MM)	0,000		
---	6085.201.057		SPLIT RING	1			KPL.A=4,00	0,000		
---	6085.201.056		SPLIT RING	1			KPL.A=3,90	0,000		
---	6085.201.055		SPLIT RING	1			KPL.A=3,80	0,000		
---	6085.201.054		SPLIT RING	1			KPL.A=3,70	0,000		
---	6085.201.052		SPLIT RING	1			KPL.A=3,60	0,000		
---	6085.201.050		SPLIT RING	1			KPL.A=3,50	0,000		
---	6085.201.048		SPLIT RING	1			KPL.A=3,40	0,000		
570	0730.063.154		RETAINING RING	1			A=3,40 IN 0730 062 636(2)	0,000		





Parts list

Page 1 from 2

Material number: 1304.050.412

16 S 109 /

Plant: 062.06.22-1

Material-assembly-group-no: 1304.106.123



Pos.	Material number	Customer material	Name	Quantity	ME	Amend. no.	Techn. Info.	Weight	Rep kit	Alternative material
30	1304.306.089		BEARING PLATE	1				0,000		
40	1304.306.022		LOCKING PIECE	1				0,000		
48	1304.306.054		GEAR SHIFT RAIL	1				0,000		
50	1304.306.010		GEAR SHIFT FORK	1			3+4G	0,000		
70	1290.306.066		SLIDING PAD	2				0,037		
80	---		ARTICULATION BOLT	2			M18X1,5 SK6	0,000		
---	1346.306.089		ARTICULATION BOLT	2		Z00008927910		0,000		
---	0730.301.379		SPRING WASHER	2		Z00009160711	19X28 19X28	0,000		
98	1304.306.055		GEAR SHIFT RAIL	1				0,000		
100	1304.306.009		GEAR SHIFT FORK	1			1+2G	0,000		
110	1290.306.066		SLIDING PAD	2				0,037		
120	---		ARTICULATION BOLT	2			M18X1,5 SK6	0,000		
---	1346.306.089		ARTICULATION BOLT	2		Z00008927910		0,000		
---	0730.301.379		SPRING WASHER	2		Z00009160711	19X28 19X28	0,000		
138	1304.306.054		GEAR SHIFT RAIL	1				0,000		
140	1304.306.011		GEAR SHIFT FORK	1			RG	0,000		
150	1290.306.066		SLIDING PAD	2				0,037		
160	---		ARTICULATION BOLT	2			M18X1,5 SK6	0,000		
---	1346.306.089		ARTICULATION BOLT	2		Z00008927910		0,000		
---	0730.301.379		SPRING WASHER	2		Z00009160711	19X28 19X28	0,000		
180	1304.306.140		LOCKING LEVER	1			9/16S-109	0,000		
190	1304.306.090		BEARING PLATE	1			9/16 S 90 HINTEN WAAGRECHT	0,000		
200	0730.300.430		SNAP RING	1				0,000		
210	0732.041.374		COMPRSPRING	1				0,000		
220	---		SCREW PLUG	1			35N.M*DICHTRING M14X1,5	0,000		
---	0636.100.689		SCREW PLUG	1		Z00010111911	M14X1,5	0,000		
---	0634.801.217		SEALING RING	1			14X20	0,000		

Parts list

Page 2 from 2

Material number: 1304.050.412

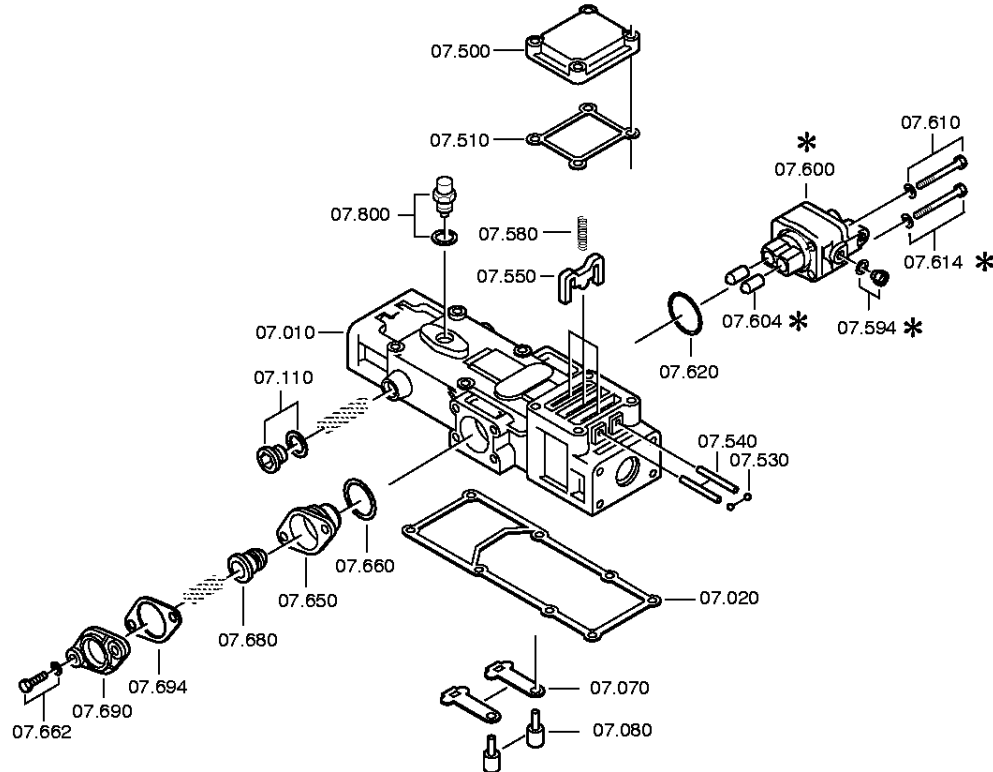
16 S 109 /

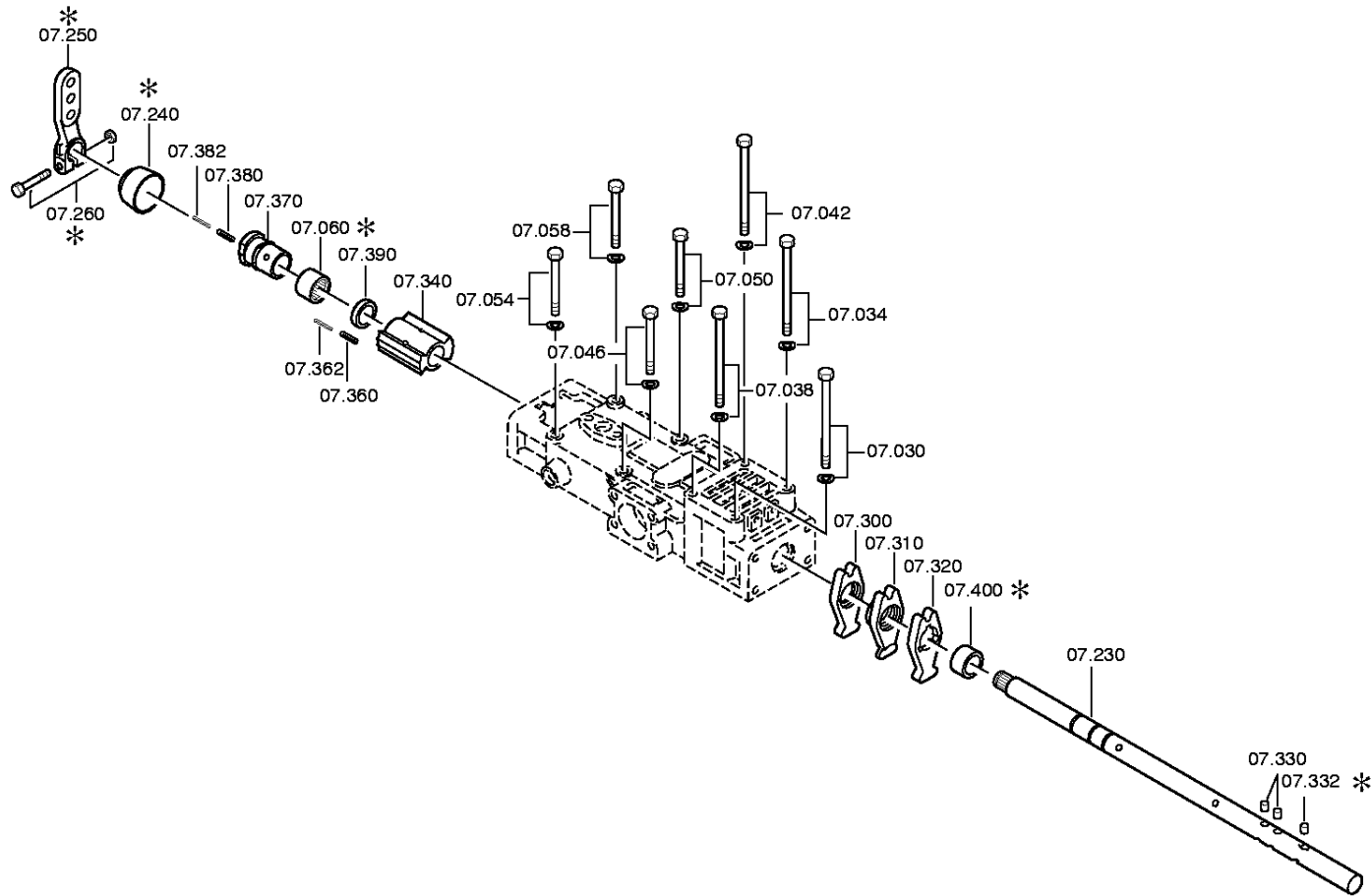
Plant: 062.06.22-1

Material-assembly-group-no: 1304.106.123



Pos.	Material number	Customer material	Name	Quantity	ME	Amend. no.	Techn. Info.	Weight	Rep kit	Alternative material
260	---		SWITCH	1		C01006530E10	OEFF*45N.M* DICHTRING* BAJONETT	0,000		
---	0501.216.474		SWITCH	1				0,050		
---	0634.801.062		SEALING RING	1			18X24	0,001		
270	0635.460.024		BALL	1			13	0,000		
600	1304.207.002		PIN	1			KPL.	0,000		
610	1268.307.170		GASKET	1			ENTHALT.IN 1290 306 272(2)	0,000		
620	1304.307.083		PLATE	1			ENTHALT.IN 1304 307 082(2)	0,000		
630	---		HEXAGON BOLT	2		Z00007059111	M8X28	0,000		
---	0636.016.414		HEXAGON BOLT	2		Z00007059116	M8X28	0,000		
---	0630.100.251		SPRING WASHER	2		Z00007159812		0,000		
640	---		SWITCH	1		C01006530E10	OEFF*45N.M* DICHTRING* BAJONETT	0,000		
---	0501.216.474		SWITCH	1				0,050		
---	0634.801.062		SEALING RING	1			18X24	0,001		





Parts list

Page 1 from 3

Material number: 1304.050.412

16 S 109 /

Plant: 062.07.03-1

Material-assembly-group-no: 1304.107.804



Pos.	Material number	Customer material	Name	Quantity	ME	Amend. no.	Techn. Info.	Weight	Rep kit	Alternative material
10	1304.307.385		GEAR SHIFT HOUSING	1			ENTHALT.IN 1304 307 417(0)	0,000		
20	0501.324.626		GASKET	1		C01004991F10		0,000		
30	0636.100.525		HEXAGON BOLT	1		Z00007053412	M8X110	0,000		
34	---		HEXAGON BOLT	1		Z00007054612	M8X105	0,000		
---	0636.011.765		HEXAGON BOLT	1		Z00007054610	M8X105	0,000		
---	0630.100.251		SPRING WASHER	1		Z00007159812		0,000		
38	0636.100.525		HEXAGON BOLT	1		Z00007053412	M8X110	0,000		
42	---		HEXAGON BOLT	1		Z00007054612	M8X105	0,000		
---	0636.011.765		HEXAGON BOLT	1		Z00007054610	M8X105	0,000		
---	0630.100.251		SPRING WASHER	1		Z00007159812		0,000		
46	---		HEXAGON BOLT	1			M8X75	0,000		
---	0636.100.522		HEXAGON BOLT	1		Z00007052814	M8X75	0,000		
---	0630.100.251		SPRING WASHER	1		Z00007159812		0,000		
50	---		HEXAGON BOLT	1			M8X75	0,000		
---	0636.100.522		HEXAGON BOLT	1		Z00007052814	M8X75	0,000		
---	0630.100.251		SPRING WASHER	1		Z00007159812		0,000		
54	---		HEXAGON BOLT	1			M8X75	0,000		
---	0636.100.522		HEXAGON BOLT	1		Z00007052814	M8X75	0,000		
---	0630.100.251		SPRING WASHER	1		Z00007159812		0,000		
58	---		HEXAGON BOLT	1			M8X75	0,000		
---	0636.100.522		HEXAGON BOLT	1		Z00007052814	M8X75	0,000		
---	0630.100.251		SPRING WASHER	1		Z00007159812		0,000		
60	0635.303.053		NEEDLE SLEEVE	1			25X32X20	120		
70	1304.307.019		DETENT LEVER	2				0,000		
80	1304.307.336		PIN	4			ENTHALT.IN 1304 307 334(3)	0,000		
110	---		SCREW PLUG	2		Z00010111513	35N.M*DICHTRING M18X1,5	0,000		
---	0636.100.791		SCREW PLUG	2		Z00010111521	M18X1,5	0,000		
---	0634.801.062		SEALING RING	2		Z00010111521	18X24	0,001		

Parts list

Page 2 from 3

Material number: 1304.050.412

16 S 109 /

Plant: 062.07.03-1

Material-assembly-group-no: 1304.107.804



Pos.	Material number	Customer material	Name	Quantity	ME	Amend. no.	Techn. Info.	Weight	Rep kit	Alternative material
230	1304.307.267		GEAR SHIFT SHAFT	1			ENTHALT.IN 1304 307 408(1)	0,000		
240	1324.307.268		PROTECTING CAP	1		Z00009174312		0,000		
250	1304.307.488		GEAR SHIFT LEVER	1		Z00009149410	U549	0,000		
260	---		BOLT+NUT	1		Z00007891718	M10X40	0,000		
---	0636.100.789		HEXAGON BOLT	1		Z00007891711	M10X40	0,000		
---	0637.100.419		HEXAGON NUT	1		Z00007892710	M10	0,000		
300	1304.307.258		DRIVER	1				0,000		
310	1304.307.259		DRIVER	1				0,000		
320	1304.307.260		DRIVER	1				0,000		
330	0735.470.126		ROLLER	6			8,0X8,0 FA.INA	0,000		
340	1304.307.442		DETENT PART	1		C01003843A10	ENTHALT.IN 1304 307 441(1)	0,000		
360	0631.329.071		SLOTPIN	1			6X36	4,300		
362	0631.329.029		SLOTPIN	1			3,5X36	0,000		
370	1304.307.255		DETENT BUSH	1			ENTHALT.IN 1308 307 009(2)	0,000		
380	0631.329.069		SLOTPIN	1			6X30	4		
382	0631.329.027		SLOTPIN	1			3,5X28	0,000		
500	---		DETENT COVER	1				0,000		
---	1304.307.257		DETENT COVER	1			ENTHALT.IN 1304 307 320(1)	0,000		
---	1304.307.321		DETENT COVER	1			ENTHALT.IN 1304 307 320(1)	0,000		
510	1304.307.437		GASKET	1				0,000		
530	0635.460.034		BALL	2			6,35	0,000		
540	0631.306.849		CYLINDRICAL PIN	2			6X60	0,000		
550	1304.307.339		GSHIFT DETENT	3				0,000		
580	0732.040.255		COMPRSPRING	3				0,000		
600	6038.202.045		CUT-OFF VALVE	1		C01006472C10	KPL.H-H* ABLUFTDROSSEL 2,50	0,000		

Parts list

Page 3 from 3

Material number: 1304.050.412

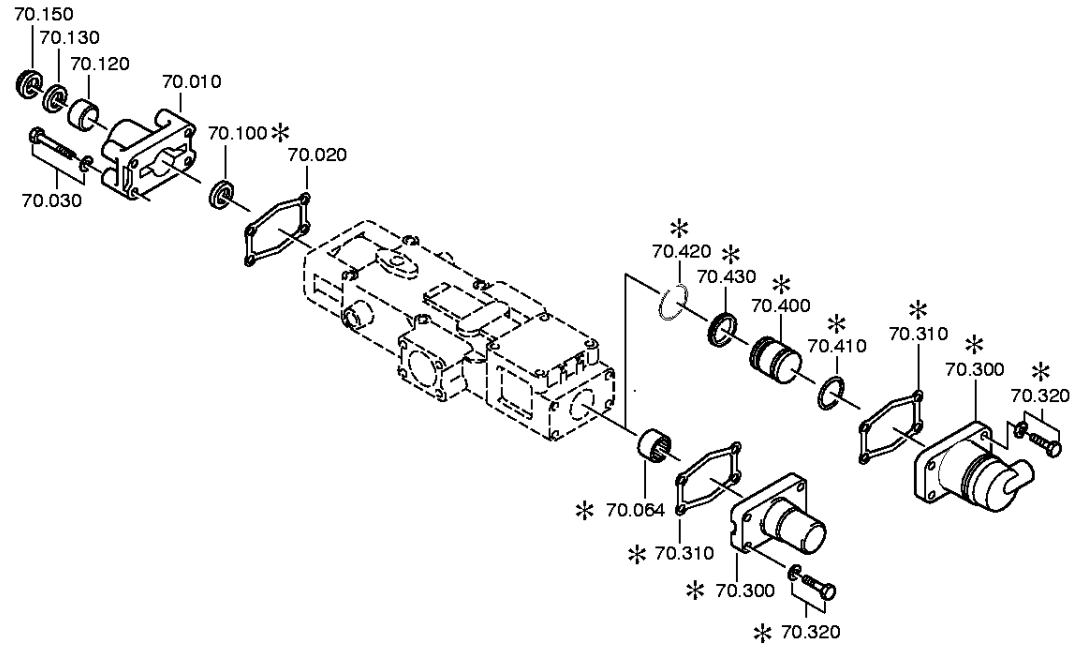
16 S 109 /

Plant: 062.07.03-1

Material-assembly-group-no: 1304.107.804



Pos.	Material number	Customer material	Name	Quantity	ME	Amend. no.	Techn. Info.	Weight	Rep kit	Alternative material
604	0501.209.188		BALL ROLLER	2		C01003843A10	KPL.	0,000		
610	---		HEXAGON BOLT	4			M8X65	0,000		
---	0636.100.519		HEXAGON BOLT	4		Z00007054112	M8X65	0,000		
---	0630.100.295		WASHER	4		Z00007158414		0,000		
620	0634.313.505		O-RING	1			42X3	0,000		
650	---		INSERT	1				0,000		
---	1304.307.486		INSERT	1				0,000		
---	1304.307.194		INSERT	1				0,000		
660	0634.314.021		O-RING	1			36,2X3	0,000		
662	---		HEXAGON BOLT	2		Z00007891319	M8X30	0,000		
---	0636.100.797		HEXAGON BOLT	2		Z00007891310	M8X30	0,000		
---	0630.100.251		SPRING WASHER	2		Z00007159812		0,000		
680	0501.314.501		STOP PIN	1		C01009914E10		0,000		
690	1304.307.331		COVER	1			ENTHALT.IN 1304 307 329(2)	0,000		
694	1304.307.277		GASKET	1			ENTHALT.IN 1304 307 276(3)	0,000		
800	---		DETENT PLUNGER	1			120N*50N.M*60GRAD	0,000		
---	1324.207.012		DETENT PLUNGER	1		Z00009038110	120N	0,000		
---	0730.008.604		SEALING RING	1		C01006305E10		0,000		



Parts list

Page 1 from 1

Material number: 1304.050.412

16 S 109 /

Plant: 062.08.02-1

Material-assembly-group-no: 1304.170.003



Pos.	Material number	Customer material	Name	Quantity	ME	Amend. no.	Techn. Info.	Weight	Rep kit	Alternative material
10	---		GEAR SHIFT COVER	1				0,000		
---	1304.307.158		GEAR SHIFT COVER	1				0,000		
---	1304.307.042		GEAR SHIFT COVER	1				0,000		
20	0501.318.308		GASKET	1		C01004991B10		0,000		
30	---		HEXAGON BOLT	4			M8X50	0,000		
---	0636.016.404		HEXAGON BOLT	4		Z00007058712	M8X50	0,000		
---	0630.100.251		SPRING WASHER	4		Z00007159812		0,000		
64	0635.303.053		NEEDLE SLEEVE	1			25X32X20	120		
120	0730.260.330		BEARING BUSH	1			A=20,00 IN 0730 260 546(2)	0,000		
130	0634.300.302		SHAFT SEAL	1			25X35X7	0,000		
150	0634.307.367		SCRAPER	1				0,009		
300	1304.307.375		COVER	1				0,000		
310	0501.318.308		GASKET	1		C01004991B10		0,000		
320	---		HEXAGON BOLT	4		Z00007891319	M8X30	0,000		
---	0636.100.797		HEXAGON BOLT	4		Z00007891310	M8X30	0,000		
---	0630.100.251		SPRING WASHER	4		Z00007159812		0,000		

Plant

Page 1 from 1

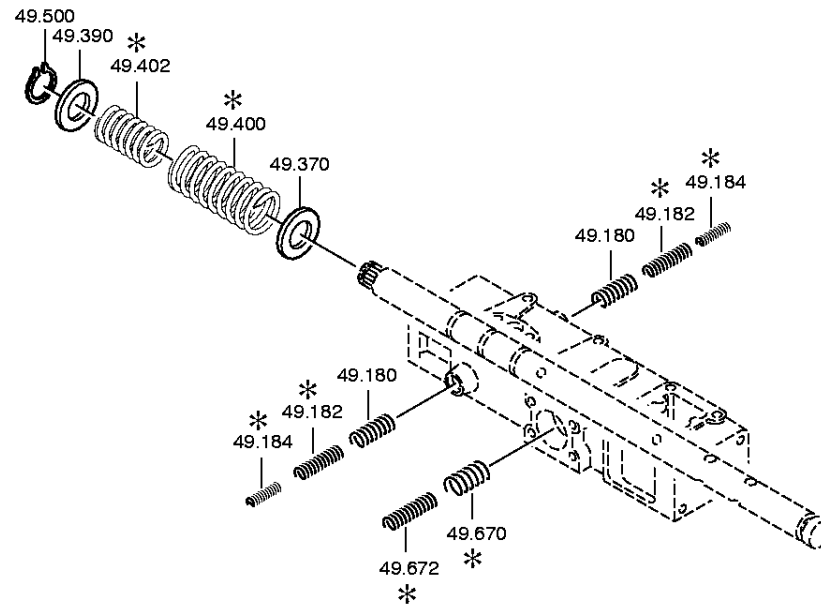
Material number: 1304.050.412

Plant: 062.12.02-1

Material-assembly-group-no: 1304.149.121

16 S 109 /

SET OF SPRINGS



Parts list

Page 1 from 1

Material number: 1304.050.412

16 S 109 /

Plant: 062.12.02-1

Material-assembly-group-no: 1304.149.121

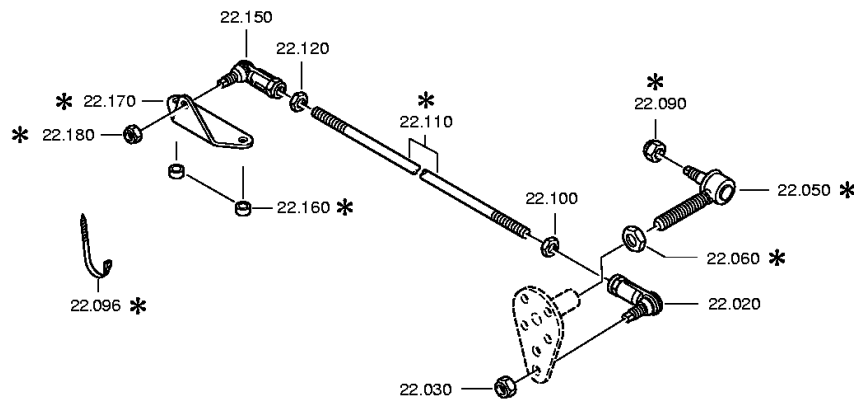


Pos.	Material number	Customer material	Name	Quantity	ME	Amend. no.	Techn. Info.	Weight	Rep kit	Alternative material
180	0732.041.612		COMPRSPRING	2				0,000		
370	0730.301.223		WASHER	1		Z00008917011	A=2,00 25,1X39,0X2,0	0,000		
390	0730.301.223		WASHER	1		Z00008917011	A=2,00 25,1X39,0X2,0	0,000		
400	0732.041.549		COMPRSPRING	1				0,000		
500	0630.501.248		RETAINING RING	1			25X2	4		
670	0732.042.156		COMPRSPRING	1				0,010		
672	0732.040.819		COMPRSPRING	1				0,000		



Bildtafel:
Figure: 062.14.13
Figure:
Figura:

je nach Stücklistenausführung
depending on spec. number
* suivant la nomenclature
secondo la distinta base



Parts list

Page 1 from 1

Material number: 1304.050.412

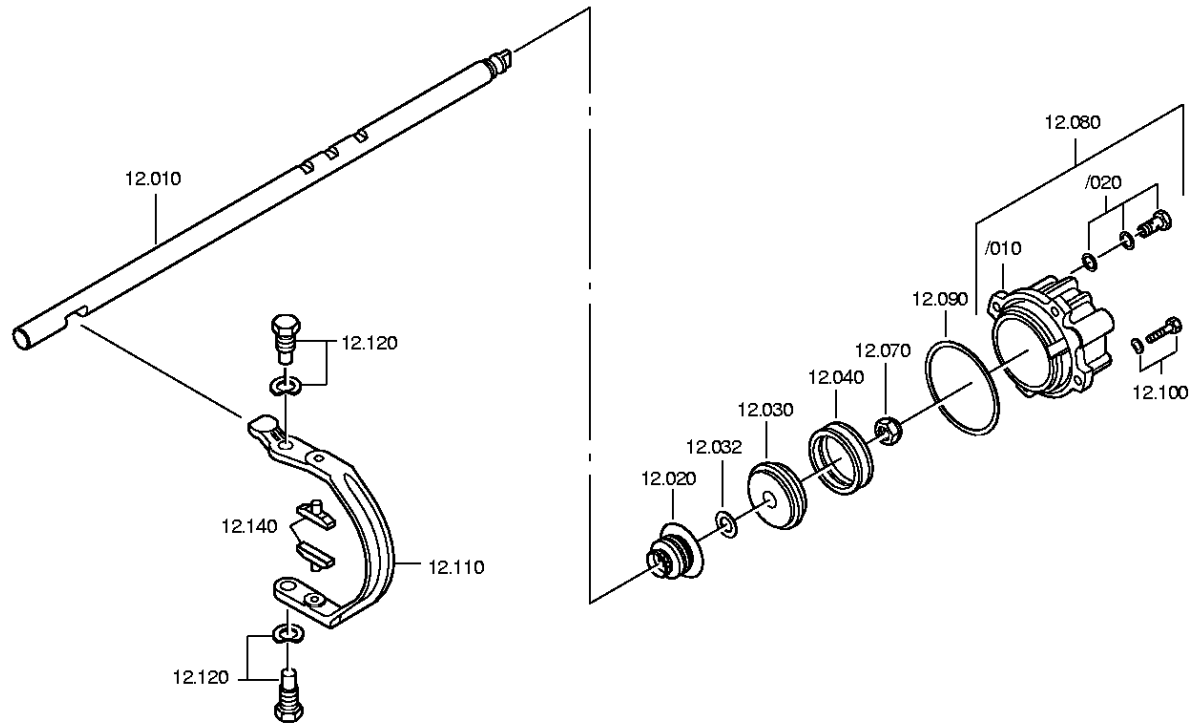
16 S 109 /

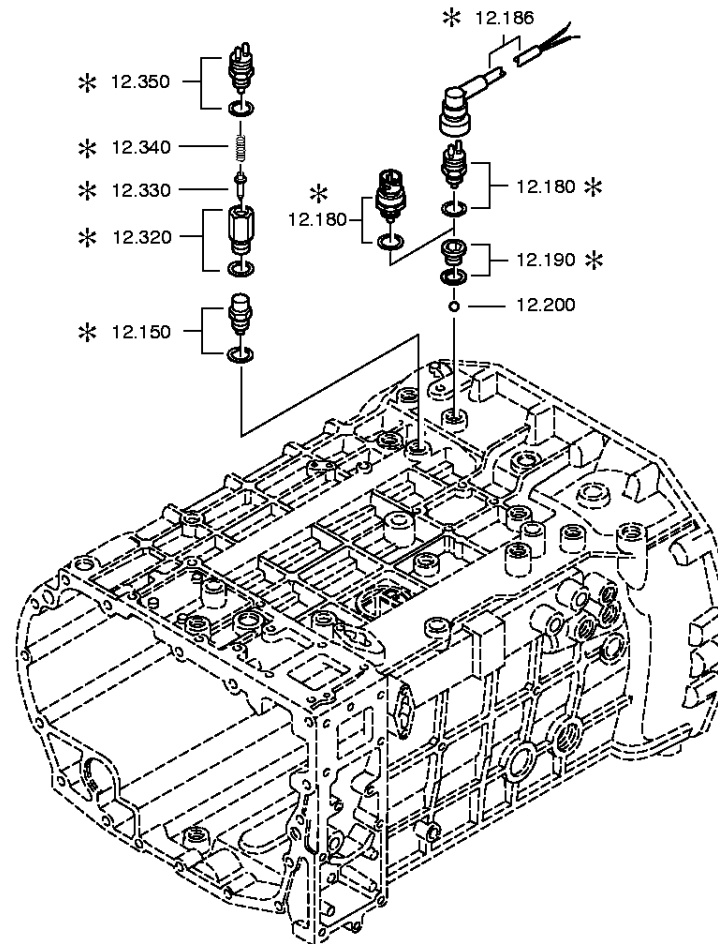
Plant: 062.14.13-1

Material-assembly-group-no: 1304.122.527



Pos.	Material number	Customer material	Name	Quantity	ME	Amend. no.	Techn. Info.	Weight	Rep kit	Alternative material
20	0501.215.954		BALL JOINT	1			KPL.LI	0,000		
30	0637.011.656		HEXAGON NUT	1			M10	0,000		
50	0501.204.714		BALL JOINT	1			KPL. IN 0501 206 327(2)	0,000		
60	0637.100.243		HEXAGON NUT	1		Z00007282912	M14X1,5	0,000		
90	0637.100.236		HEXAGON NUT	1		Z00007283512	M10X1	0,000		
100	0637.100.262		HEXAGON NUT	1		Z00007283213	M12	0,000		
110	0736.300.252		DRAW BAR	1		Z00008926410		0,000		
120	0637.011.654		HEXAGON NUT	1		Z00007283114	M12	0,000		
150	0501.215.940		BALL JOINT	1			KPL.RE	0,000		
170	1324.307.223		SUPPORT PLATE	1				0,000		
180	0637.011.656		HEXAGON NUT	1			M10	0,000		





Parts list

Page 1 from 2

Material number: 1304.050.412

16 S 109 /

Plant: 062.40.01-1

Material-assembly-group-no: 1304.112.006



Pos.	Material number	Customer material	Name	Quantity	ME	Amend. no.	Techn. Info.	Weight	Rep kit	Alternative material
10	1304.312.005		GEAR SHIFT RAIL	1				0,000		
20	0750.112.047		FLANGE PACKING	1			22X36X14,5	0,000		
30	1296.312.053		PISTON	1				300		
32	---		SHIM	1			H= 1,50- 2,70(ABSTUFUNG:0,30MM)	0,000		
---	0730.107.545		SHIM	1			A=2,70 IN 0730 107 540(2)	0,000		
---	0730.107.544		SHIM	1				5		
---	0730.107.543		SHIM	1			A=2,10 IN 0730 107 540(2)	0,000		
---	0730.107.542		SHIM	1			A=1,80 IN 0730 107 540(2)	0,000		
---	0730.107.541		SHIM	1			A=1,50 IN 0730 107 540(2)	0,000		
40	0750.112.089		DOUBLE U-PACKING	1			53X63X16,2	0,000		
70	0737.300.037		LOCKING NUT	1		Z00008929011	MS16X1,5	0,000		
80	1304.212.005		CYLINDER	1			KPL.	0,000		
/10	1304.334.038		CYLINDER	1				0,000		
/20	---		UNION SCREW	2		C01003943B10		0,000		
---	0637.835.808		UNION SCREW	2		Z00010274712		0,000		
---	0730.008.056		SEALING RING	2			A12X17	0,000		
90	0634.313.216		O-RING	1			82X2,5	0,000		
100	---		HEXAGON BOLT	4		Z00007891319	M8X30	0,000		
---	0636.100.797		HEXAGON BOLT	4		Z00007891310	M8X30	0,000		
---	0630.100.251		SPRING WASHER	4		Z00007159812		0,000		
110	1304.312.003		GEAR SHIFT FORK	1				0,000		
120	---		ARTICULATION BOLT	2			M20X1,5	0,000		
---	1304.332.041		ARTICULATION BOLT	2			M20X1,5 IN 1304 306 037(2)	0,000		
---	0630.302.064		SPRING WASHER	2				8		

Parts list

Page 2 from 2

Material number: 1304.050.412

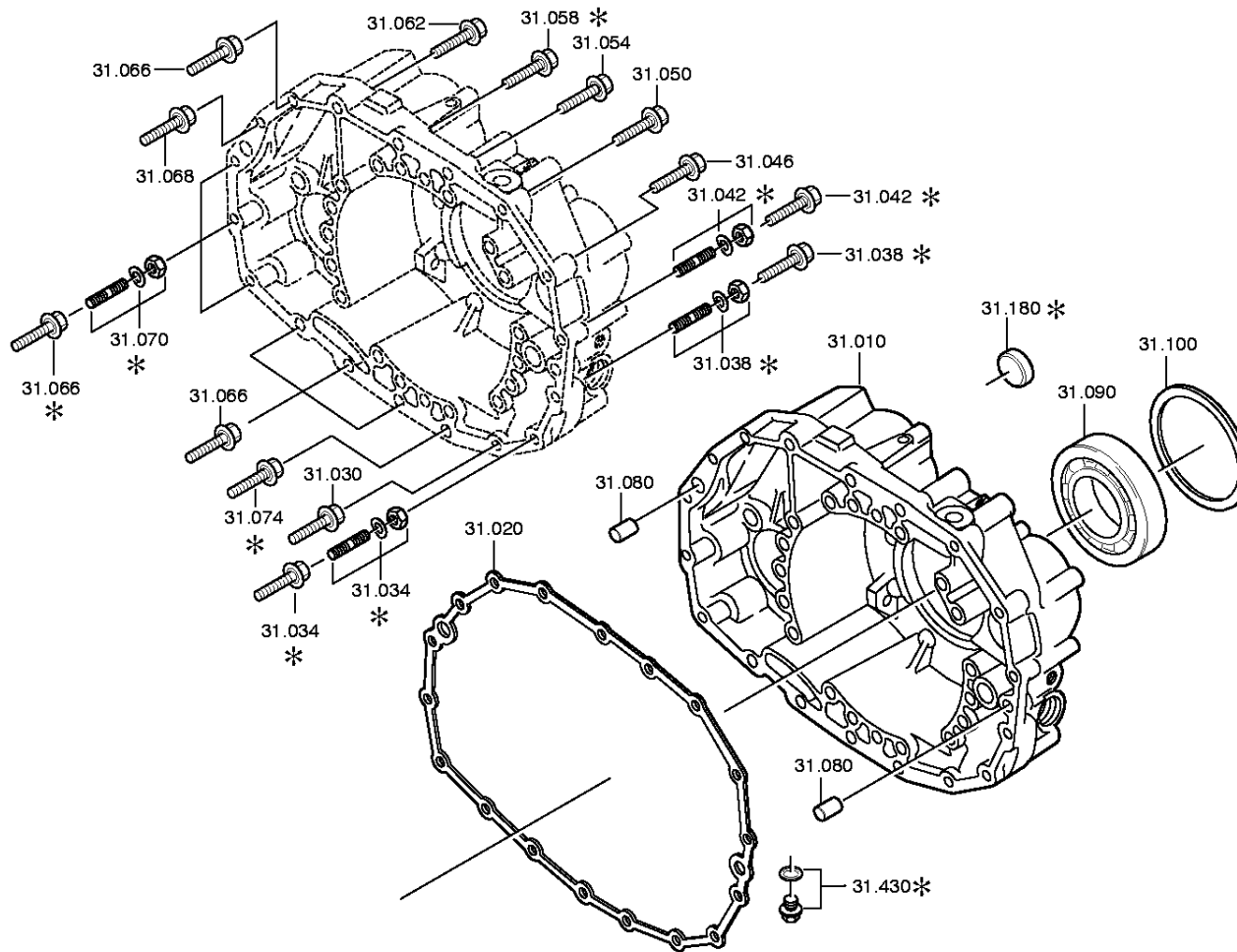
16 S 109 /

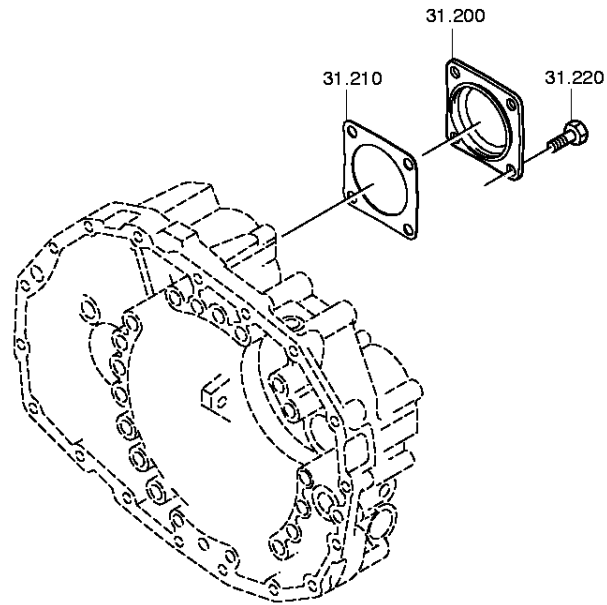
Plant: 062.40.01-1

Material-assembly-group-no: 1304.112.006



Pos.	Material number	Customer material	Name	Quantity	ME	Amend. no.	Techn. Info.	Weight	Rep kit	Alternative material
140	1268.312.057		SLIDING PAD	2			ENTHALT.IN 1272 334 014(2)	0,000		
150	---		DETENT PLUNGER	1			145N*50N.M	0,000		
---	1324.207.035		DETENT PLUNGER	1			KPL. *145 N	0,000		
---	0730.008.604		SEALING RING	1				0,000		
190	---		SCREW PLUG	1		Z00010111513	35N.M*DICHTRING M18X1,5	0,000		
---	0636.100.791		SCREW PLUG	1		Z00010111521	M18X1,5	0,000		
---	0634.801.062		SEALING RING	1		Z00010111521	18X24	0,001		





Parts list

Page 1 from 1

Material number: 1304.050.412

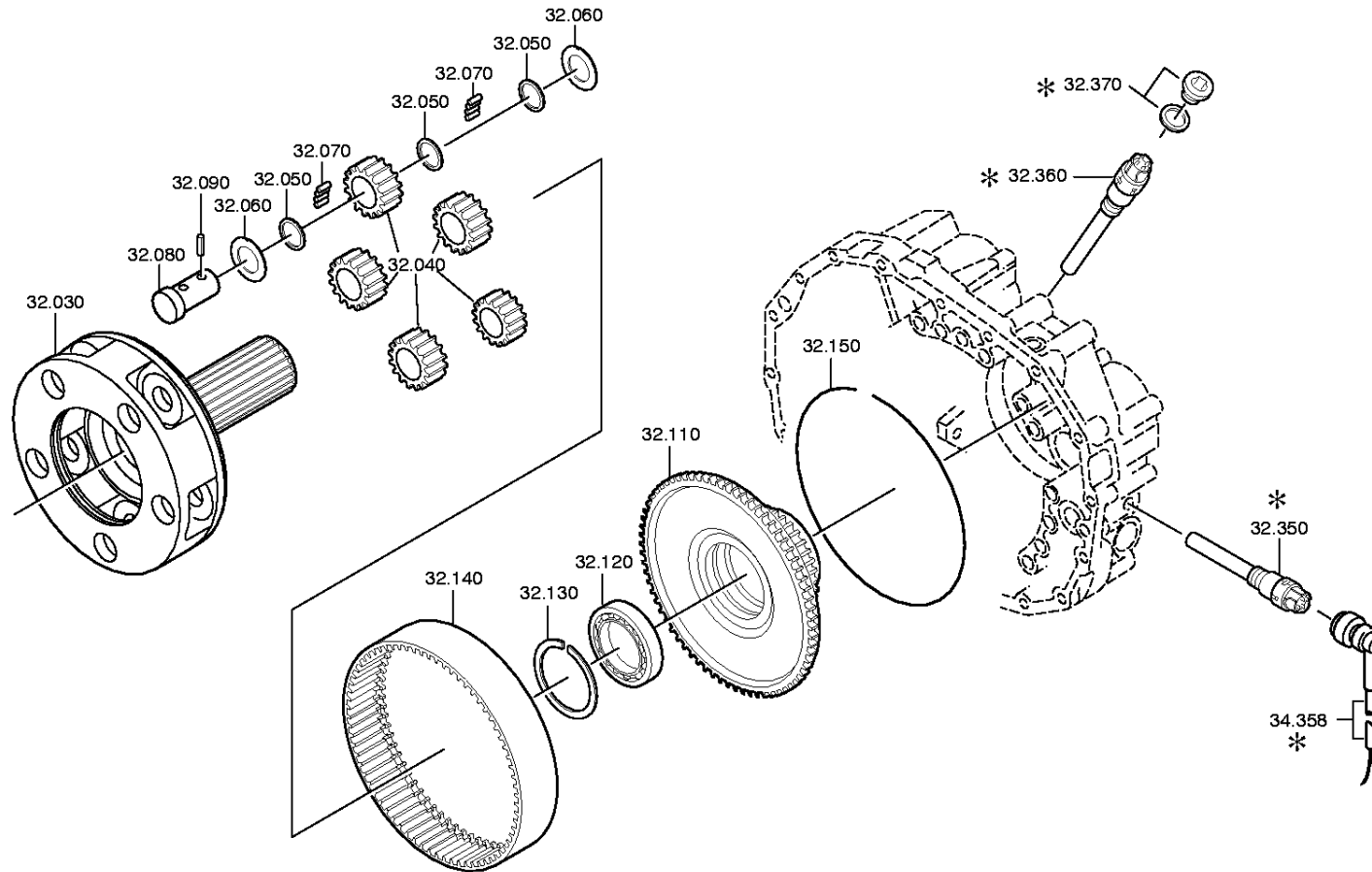
16 S 109 /

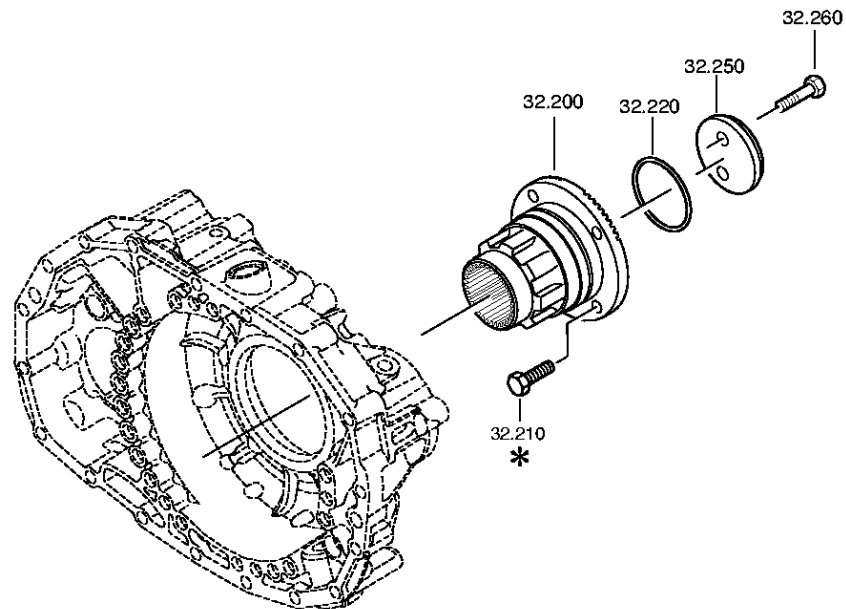
Plant: 062.43.02-1

Material-assembly-group-no: 1304.131.070



Pos.	Material number	Customer material	Name	Quantity	ME	Amend. no.	Techn. Info.	Weight	Rep kit	Alternative material
10	1304.301.380		HOUSING III	1		Z00001502414		0,000		
20	1304.301.305		GASKET	1		C01007698C10		0,000		
30	0736.300.122		HEXAGON BOLT	1		Z00009403110	M10X110 M10X110	0,000		
34	0736.300.122		HEXAGON BOLT	1		Z00009403110	M10X110 M10X110	0,000		
38	0736.300.123		HEXAGON BOLT	1			M10X70 M10X70	0,000		
42	0736.300.124		HEXAGON BOLT	1		Z00009402910	M10X50 M10X50	0,000		
46	0736.300.123		HEXAGON BOLT	1			M10X70 M10X70	0,000		
50	0736.300.123		HEXAGON BOLT	1			M10X70 M10X70	0,000		
54	0736.300.122		HEXAGON BOLT	1		Z00009403110	M10X110 M10X110	0,000		
58	0736.300.122		HEXAGON BOLT	1		Z00009403110	M10X110 M10X110	0,000		
62	0736.300.123		HEXAGON BOLT	1			M10X70 M10X70	0,000		
66	0736.300.123		HEXAGON BOLT	4			M10X70 M10X70	0,000		
68	0736.300.123		HEXAGON BOLT	1			M10X70 M10X70	0,000		
70	0736.300.123		HEXAGON BOLT	3			M10X70 M10X70	0,000		
74	0736.300.122		HEXAGON BOLT	1		Z00009403110	M10X110 M10X110	0,000		
80	0631.306.229		CYLINDRICAL PIN	2			16X36	0,000		
90	0750.116.404		BALL BEARING	1		Z00001502414	80,0X140,0X26,0	0,000		
200	1328.301.170		COVER	1		Z00008068012		0,000		
210	1238.308.201		GASKET	1			ENTHALT.IN 1238 308 202(2)	0,000		
220	0636.016.406		HEXAGON BOLT	4		Z00007061014	M12X25	0,000		





Parts list

Page 1 from 2

Material number: 1304.050.412

16 S 109 /

Plant: 062.44.06-1

Material-assembly-group-no: 1304.132.137



Pos.	Material number	Customer material	Name	Quantity	ME	Amend. no.	Techn. Info.	Weight	Rep kit	Alternative material
30	1304.232.099		PLANET CARRIER	1		Z00001345623	KPL.	0,000		
/20	1304.332.030		GUIDE RING	1				0,000		
40	1304.232.054		PLANET GEAR SET	1			KPL.	0,000		
50	0730.103.102		INTERM WASHER	15			A=1,50 IN 0730 105 951(2)	0,000		
60	0501.304.692		WASHER	10			ENTHALT.IN 0501 304 086(2)	0,000		
70	0735.470.115		NEEDLE ROLLER	200			5,0X15,3 FA.INA	0,000		
80	1304.332.111		PLANET SHAFT	5		Z00001345623		0,000		
90	0631.329.037		SLOTPIN	5		Z00001345623	4X26	0,010		
110	1304.332.264		RING GEAR CARRIER	1		Z00001345623		0,000		
120	0735.330.804		BALL BEARING	1		Z00001345623	70,0X110,0X13,0 FA.FAG	0,000		
130	---		SNAP RING	1		Z00001345623	S= 2,00- 2,50(ABSTUFUNG:0,10MM)	0,000		
---	0730.513.755		SNAP RING	1				0,000		
---	0730.513.756		SNAP RING	1				0,000		
---	0730.513.757		SNAP RING	1				0,000		
---	0730.513.758		SNAP RING	1				0,000		
---	0730.513.759		SNAP RING	1				0,000		
---	0730.513.760		SNAP RING	1				0,000		
140	1304.332.134		RING GEAR	1		Z00001345623	Z90	0,000		
150	0730.505.140		LOCKING WIRE	1		Z00001345623	A=2,00 IN 0730 505 052(2)	0,000		
200	1304.338.097		OUTPUT FLANGE	1		Z00001345623		0,000		
210	---		HEXAGON BOLT	4		Z00001345623	SCHUTZKAPPE M14X1,5X50	0,000		
---	0636.020.211		HEXAGON BOLT	4			M14X1,5X50	0,080		
220	0634.313.223		O-RING	1		Z00001345623	59,2X5,7	0,000		
250	1304.338.045		WASHER	1		Z00001345623	ENTHALT.IN 1295 332 063(2)	0,000		

Parts list

Page 2 from 2

Material number: 1304.050.412

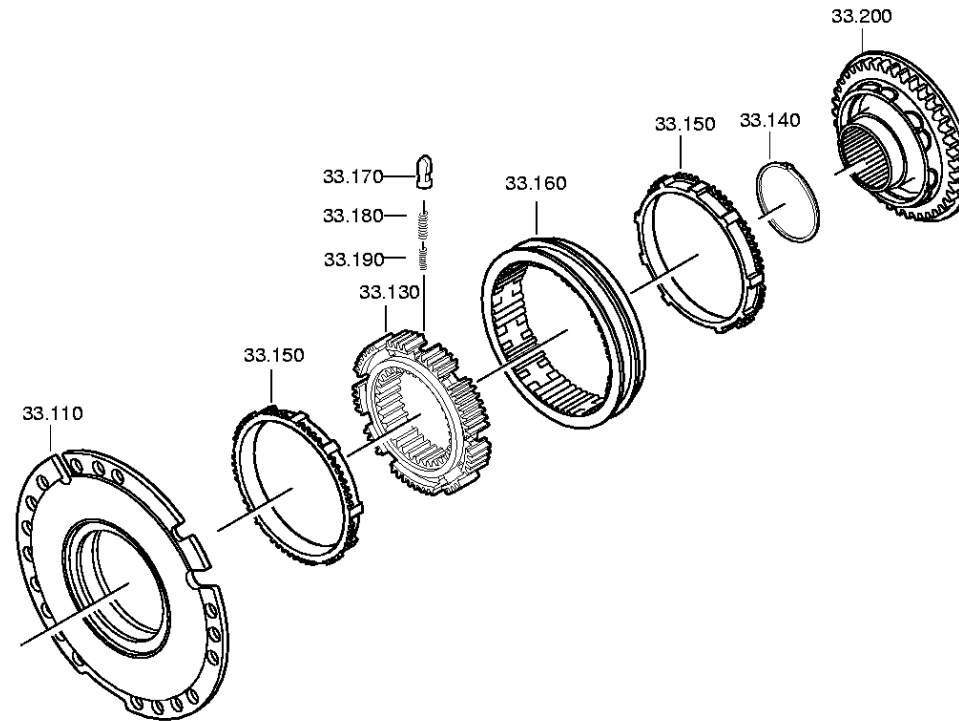
16 S 109 /

Plant: 062.44.06-1

Material-assembly-group-no: 1304.132.137



Pos.	Material number	Customer material	Name	Quantity	ME	Amend. no.	Techn. Info.	Weight	Rep kit	Alternative material
260	0636.016.407		HEXAGON BOLT	2		Z00009111110	M12X50	0,000		



Parts list

Page 1 from 1

Material number: 1304.050.412

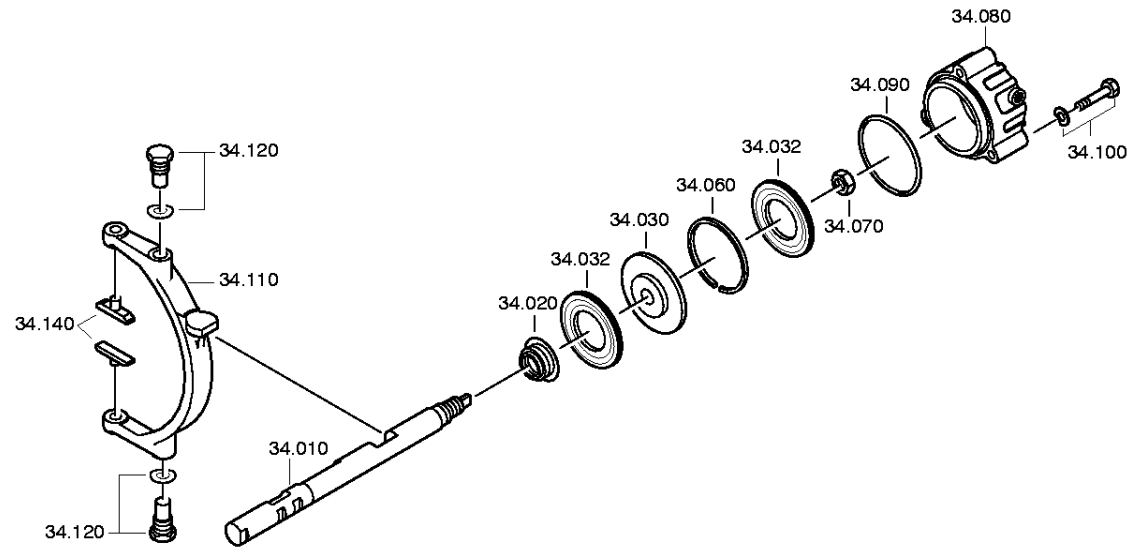
16 S 109 /

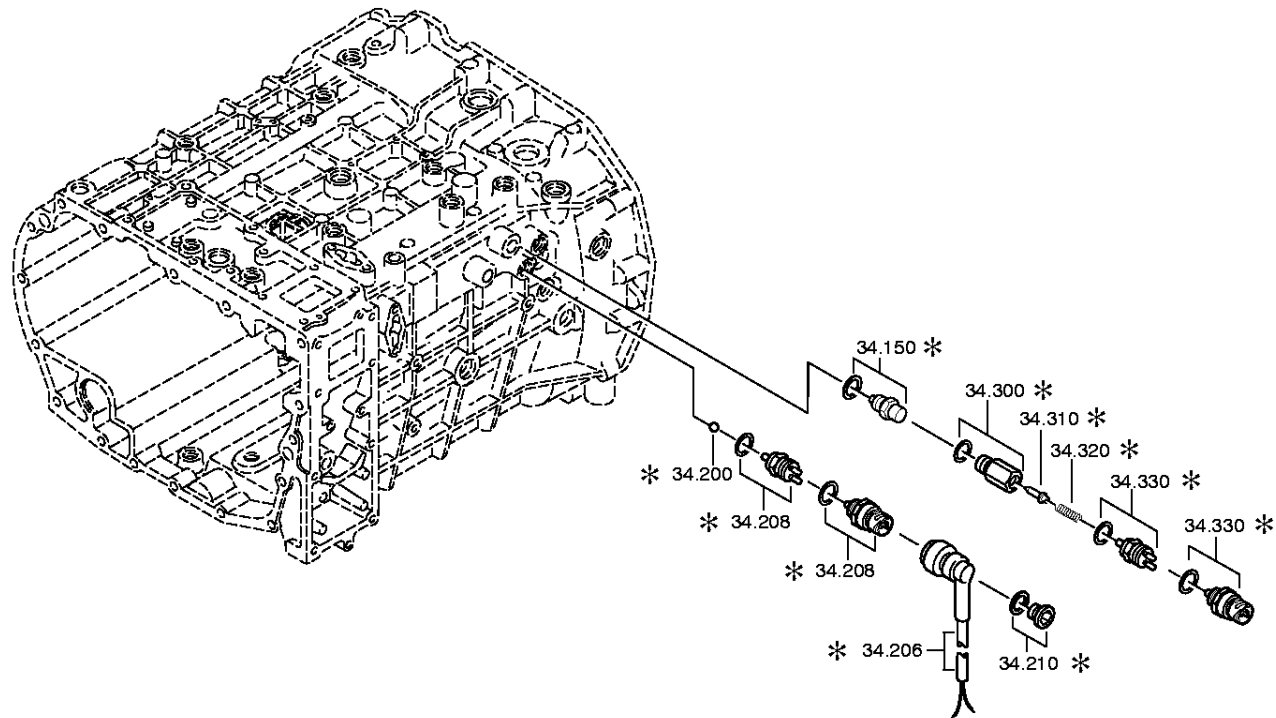
Plant: 062.45.05-1

Material-assembly-group-no: 1304.133.012



Pos.	Material number	Customer material	Name	Quantity	ME	Amend. no.	Techn. Info.	Weight	Rep kit	Alternative material
110	1304.233.006		CLUTCH BODY	1		Z00001345623		0,000		
130	1313.333.001		SYNCHROBODY	1			ENTHALT.IN 1296 333 014(1)	0,000		
140	---		RETAINING RING	1		Z00001345623	S= 3,70- 4,00(ABSTUFUNG:0,10MM)	0,000		
---	0630.501.061		RETAINING RING	1			125X4	0,100		
---	0630.501.173		RETAINING RING	1			125X3,9	0,000		
---	0630.501.174		RETAINING RING	1			125X3,8	0,000		
---	0630.501.175		RETAINING RING	1			125X3,7	0,000		
150	1296.333.045		SYNCHRORING	2				0,000		
160	1304.333.011		SLIDING SLEEVE	1			ENTHALT.IN 1304 333 013(0)	0,000		
170	1240.304.278		PRESSURE PIECE	9				0,000		
180	0732.040.385		COMPRSPRING	9				0,000		
190	0732.040.386		COMPRSPRING	9		C01007317F10		0,000		
200	1324.233.001		CLUTCH BODY	1		Z00001345623		0,000		





Parts list

Page 1 from 1

Material number: 1304.050.412

16 S 109 /

Plant: 062.46.05-1

Material-assembly-group-no: 1304.134.033



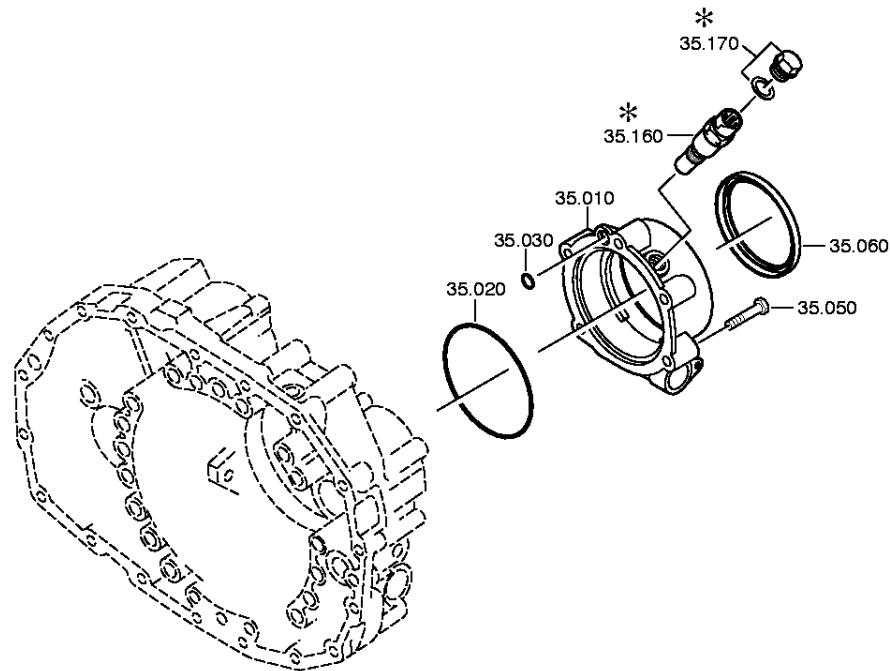
Pos.	Material number	Customer material	Name	Quantity	ME	Amend. no.	Techn. Info.	Weight	Rep kit	Alternative material
10	1304.334.075		GEAR SHIFT RAIL	1				0,000		
20	0750.112.047		FLANGE PACKING	1			22X36X14,5	0,000		
30	1315.334.041		PISTON	1			ENTHALT.IN 1315 334 040(2)	0,000		
32	0734.307.287		SEALING RING	2			50X100X7,5 FA.KACO	0,000		
60	0750.112.096		GUIDE RING	1			95X100X5,6	0,000		
70	0737.300.037		LOCKING NUT	1		Z00008929011	MS16X1,5	0,000		
80	1304.334.079		CYLINDER	1				0,000		
90	0634.313.338		O-RING	1			108X3	0,000		
100	0736.300.123		HEXAGON BOLT	3			M10X70 M10X70	0,000		
110	1304.334.063		GEAR SHIFT FORK	1				0,000		
120	---		ARTICULATION BOLT	2		Z00014011310	O.SCHEIBE	0,000		
---	1324.334.008		ARTICULATION BOLT	2		Z00014011311	M24X1,5	0,000		
140	1272.334.003		SLIDING PAD	2				0,000		
150	---		DETENT PLUNGER	1			145N*50N.M	0,000		
---	1324.207.035		DETENT PLUNGER	1			KPL. *145 N	0,000		
---	0730.008.604		SEALING RING	1				0,000		
200	0635.460.024		BALL	1			13	0,000		
208	---		SWITCH	1			SCHL *45N.M* DICHTRING* BAJONETT	0,000		
---	0501.210.058		SWITCH	1			KPL.	0,000		
---	0634.801.062		SEALING RING	1			18X24	0,001		

Plant

Page 1 from 1

Material number: 1304.050.412
Plant: 062.47.02-1
SPEEDOMETER COVER

16 S 109 /
SPEEDOMETER COVER



Parts list

Page 1 from 1

Material number: 1304.050.412

16 S 109 /

Plant: 062.47.02-1

Material-assembly-group-no: 1304.135.005



Pos.	Material number	Customer material	Name	Quantity	ME	Amend. no.	Techn. Info.	Weight	Rep kit	Alternative material
10	1304.301.410		SPEEDOMETER COVER	1		Z00001502410		0,000		
20	0634.303.110		O-RING	1			138X3	3,900		
30	0634.316.181		O-RING	1			10X3	0,000		
50	0636.016.405		HEXAGON BOLT	5		Z00007060112	M10X60	0,000		
60	---		SHAFT SEAL	1		Z00015100510	ECOMID	0,000		
---	0734.319.459		SHAFT SEAL	1		Z00015100511	105X125X12/9,5 FA.CFW	0,000		
---	0750.199.019		GREASE	1		Z00015100511	KLASSE A	0,000		
160	---		PULSE SENSOR	1			45N.M*O.DICHTRING* BAJONETT*L=19,8	0,000		
---	0501.210.855		PULSE SENSOR	1				0,090		

Plant

Page 1 from 1

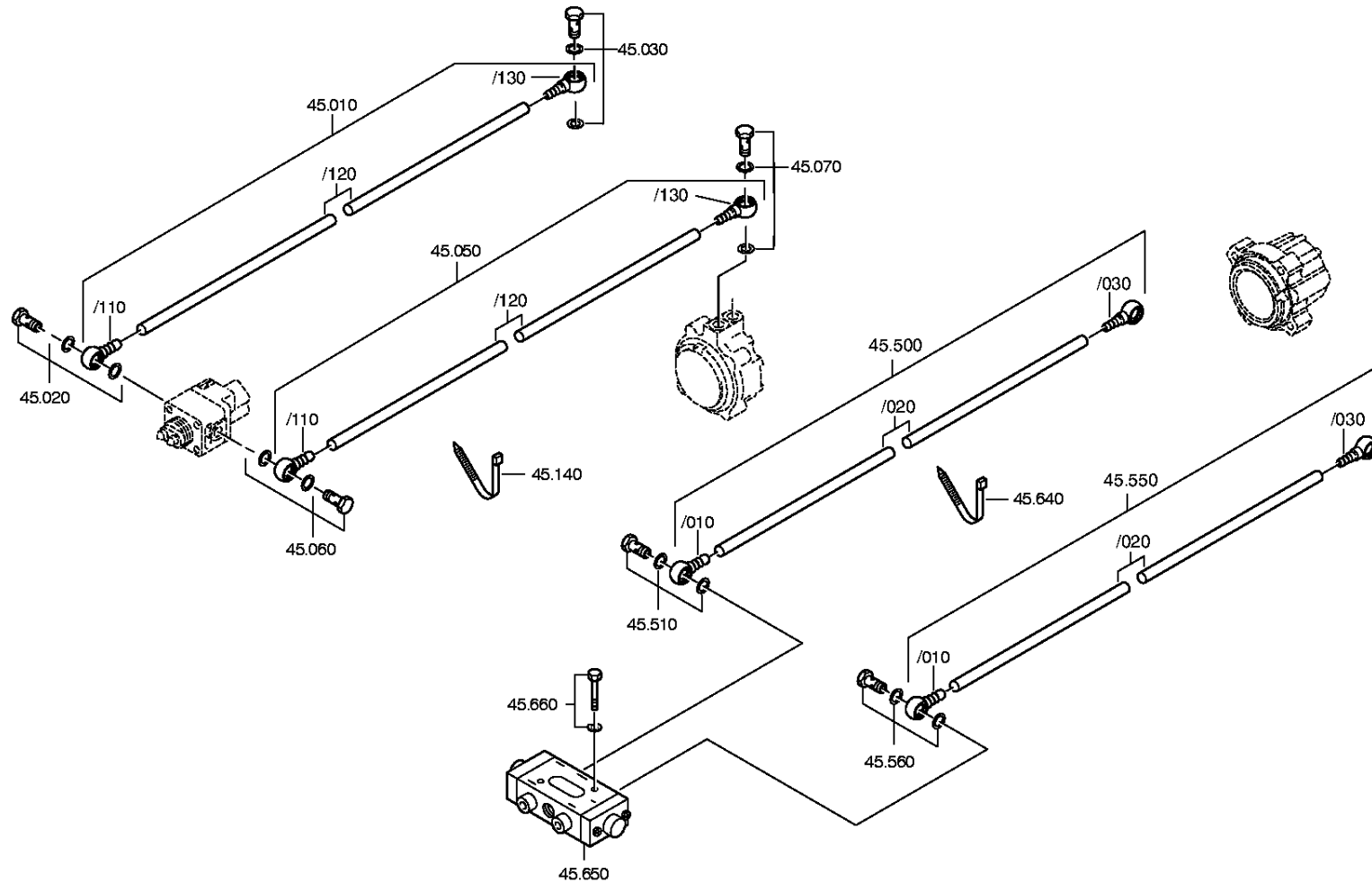
Material number: 1304.050.412

Plant: 062.57.05-1

Material-assembly-group-no: 1304.145.009

16 S 109 /

RANGE SELECTION



Parts list

Page 1 from 2

Material number: 1304.050.412

16 S 109 /

Plant: 062.57.05-1

Material-assembly-group-no: 1304.145.009



Pos.	Material number	Customer material	Name	Quantity	ME	Amend. no.	Techn. Info.	Weight	Rep kit	Alternative material
10	6007.202.081		PIPE	1			KPL.515,00MM	0,000		
/110	0637.100.421		RING PIECE	1		Z00010456710		0,000		
/120	0632.702.904		PIPE	515		C01008722A10	12X2	0,000		
/130	0637.100.421		RING PIECE	1		Z00010456710		0,000		
20	---		UNION SCREW	1		Z00010274511	M14X1,5	0,000		
---	0737.300.061		UNION SCREW	1		Z00012473710	M14X1,5	0,000		
---	0634.801.217		SEALING RING	1		Z00010274513	14X20	0,000		
30	---		UNION SCREW	1		Z00010274511	M14X1,5	0,000		
---	0737.300.061		UNION SCREW	1		Z00012473710	M14X1,5	0,000		
---	0634.801.217		SEALING RING	1		Z00010274513	14X20	0,000		
50	6007.202.156		PIPE	1			KPL.565,00MM	0,000		
/110	0637.100.421		RING PIECE	1		Z00010456710		0,000		
/120	0632.702.904		PIPE	565		C01008722A10	12X2	0,000		
/130	0637.100.421		RING PIECE	1		Z00010456710		0,000		
60	---		UNION SCREW	1		Z00010274511	M14X1,5	0,000		
---	0737.300.061		UNION SCREW	1		Z00012473710	M14X1,5	0,000		
---	0634.801.217		SEALING RING	1		Z00010274513	14X20	0,000		
70	---		UNION SCREW	1		Z00010274511	M14X1,5	0,000		
---	0737.300.061		UNION SCREW	1		Z00012473710	M14X1,5	0,000		
---	0634.801.217		SEALING RING	1		Z00010274513	14X20	0,000		
140	0659.160.068		CABLE CLIP	2				0,000		
500	6007.202.146		PIPE	1			KPL.475,00MM	0,000		
/10	0637.100.741		RING PIECE	1		Z00014327810		0,000		
/20	0632.707.004		PIPE	475			9X1,5	0,000		
/30	0637.100.422		RING PIECE	1		Z00007956611		0,000		
510	---		UNION SCREW	1		C01003945B10		0,000		
---	0637.100.519		UNION SCREW	1		Z00010298612		0,000		
---	0730.008.055		SEALING RING	1			A10X14	0,000		
550	6007.202.147		PIPE	1			KPL.545,00MM	0,000		
/10	0637.100.741		RING PIECE	1		Z00014327810		0,000		
/20	0632.707.004		PIPE	545			9X1,5	0,000		

Parts list

Page 2 from 2

Material number: 1304.050.412

16 S 109 /

Plant: 062.57.05-1

Material-assembly-group-no: 1304.145.009



Pos.	Material number	Customer material	Name	Quantity	ME	Amend. no.	Techn. Info.	Weight	Rep kit	Alternative material
/30	0637.100.422		RING PIECE	1		Z00007956611		0,000		
560	---		UNION SCREW	1		C01003945B10		0,000		
---	0637.100.519		UNION SCREW	1		Z00010298612		0,000		
---	0730.008.055		SEALING RING	1			A10X14	0,000		
640	0659.160.068		CABLE CLIP	1				0,000		
650	0501.310.059		VALVE	1				0,000		
660	---		HEXAGON BOLT	2		Z00007291513	M5X35	0,000		
---	0636.100.499		HEXAGON BOLT	2		Z00007291510	M5X35	0,000		
---	0630.100.240		SPRING WASHER	2		Z00007291510		0,000		

Plant

Page 1 from 1

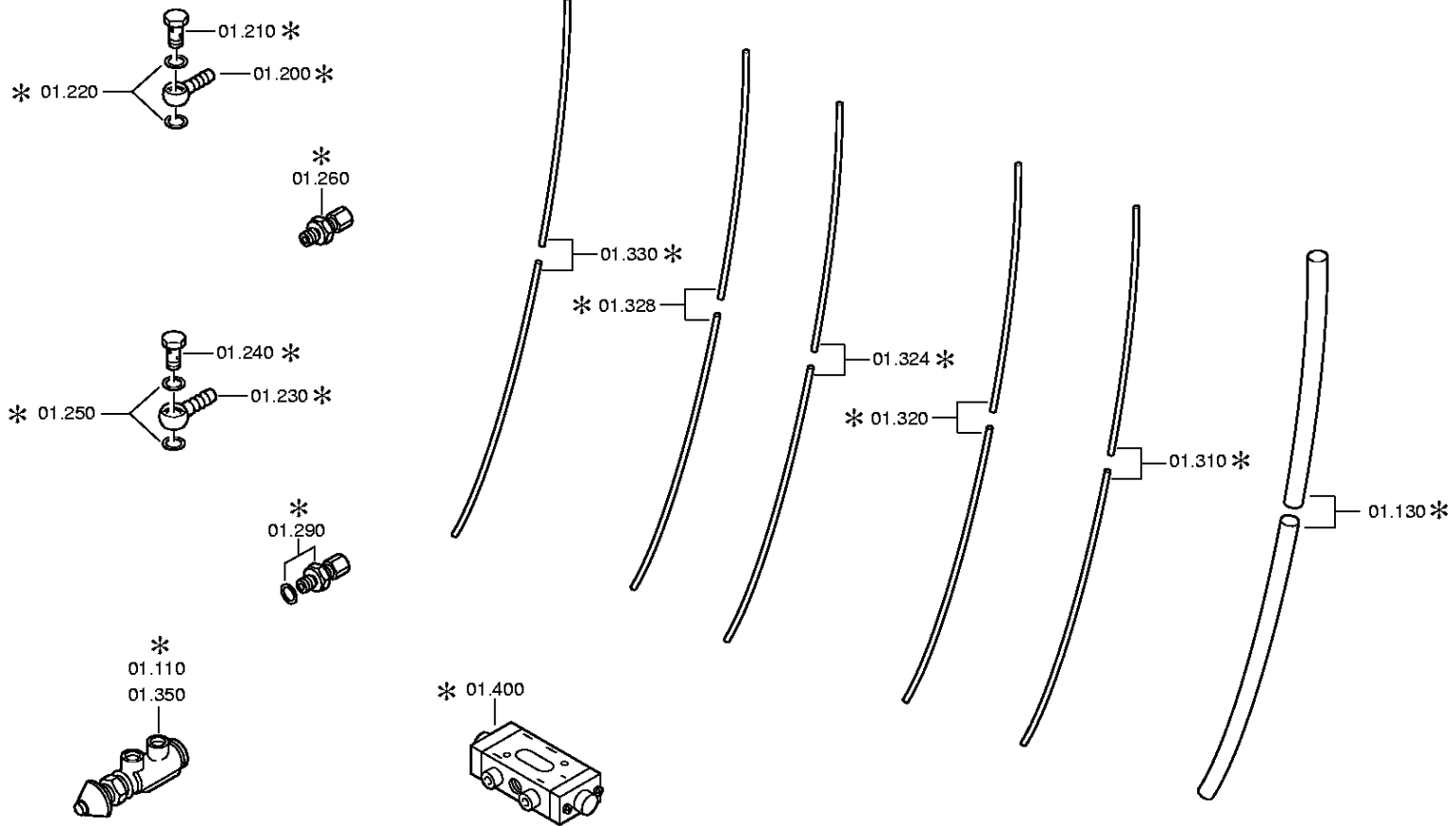
Material number: 1304.050.412

Plant: 062.95.43-1

Material-assembly-group-no: 6007.101.476

16 S 109 /

CONNECTING PARTS



Parts list

Page 1 from 1

Material number: 1304.050.412

16 S 109 /

Plant: 062.95.43-1

Material-assembly-group-no: 6007.101.476



Pos.	Material number	Customer material	Name	Quantity	ME	Amend. no.	Techn. Info.	Weight	Rep kit	Alternative material
110	0750.132.007		3/2-WAY VALVE	1			KUPPL. AUSLOESEVENTIL	0,000		
200	0737.300.042		RING PIECE	1		Z00008929612		0,000		
210	---		UNION SCREW	1		Z00010274712		0,000		
---	0637.835.808		UNION SCREW	1		Z00010274715		0,000		
---	0634.801.205		SEALING RING	1		Z00010274715	12X15,5	0,008		
230	0750.146.012		RING PIECE	1		Z00009928511		0,000		
240	---		UNION SCREW	1		Z00010298612		0,000		
---	0637.100.519		UNION SCREW	1		Z00010298617		0,000		
---	0634.801.015		SEALING RING	1		Z00010298617	10X14	0,001		
260	0637.100.762		PIPE UNION	2		Z00015226612		0,000		
320	6007.301.363		PIPE	1				0,000		
330	6007.301.364		PIPE	1				0,000		

Plant

Page 1 from 1

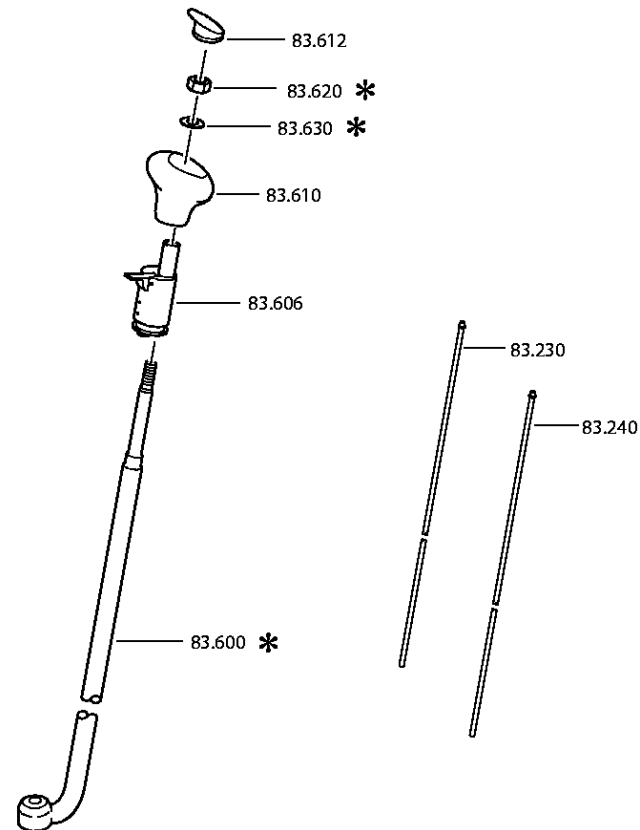
Material number: 1304.050.412

Plant: 062.98.41-1

Material-assembly-group-no: 6005.183.475

16 S 109 /

GEAR SHIFT LEVER



Parts list

Page 1 from 1

Material number: 1304.050.412

16 S 109 /

Plant: 062.98.41-1

Material-assembly-group-no: 6005.183.475



Pos.	Material number	Customer material	Name	Quantity	ME	Amend. no.	Techn. Info.	Weight	Rep kit	Alternative material
606	0501.215.157		SHIFT VALVE	1		C01005478E10	KPL.	0,000		
610	6005.200.241		GEAR SHIFT KNOB	1		C01004677A10	KPL.	0,000		
612	6038.323.100		COVER	1			ENTHALT.IN 6038 323 098(0)	0,000		