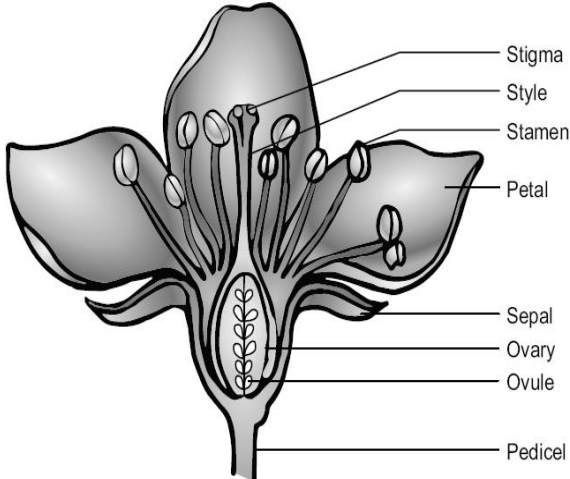
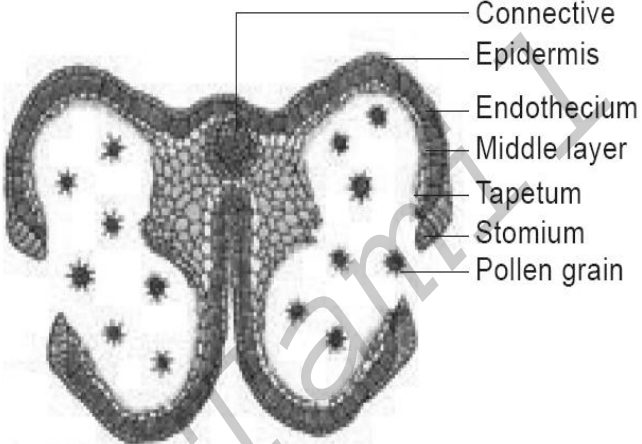
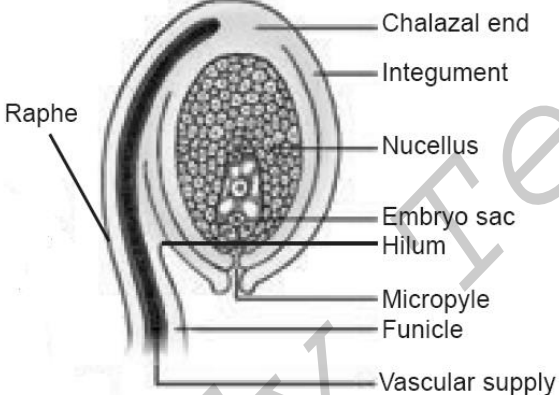
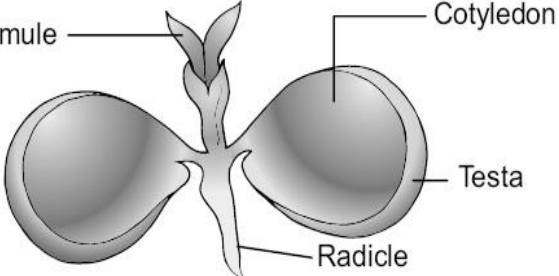
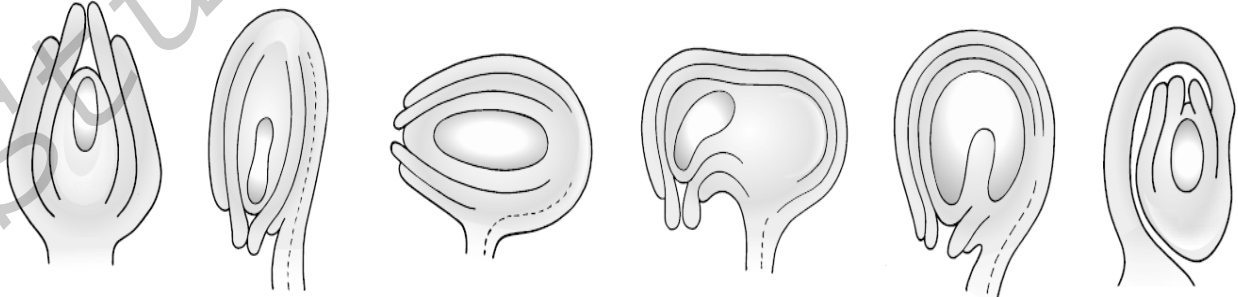
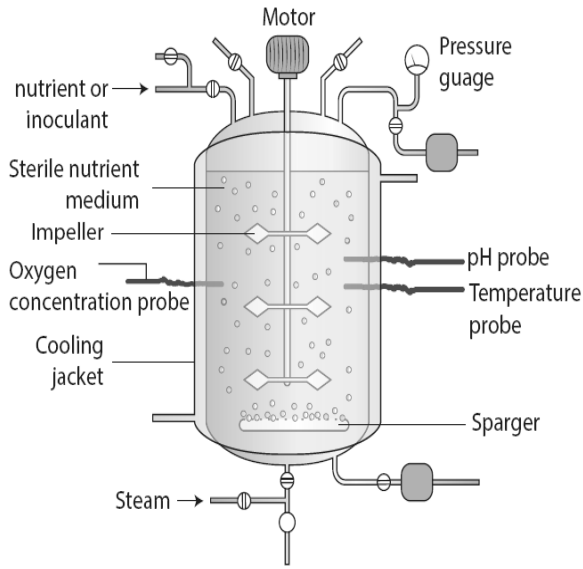


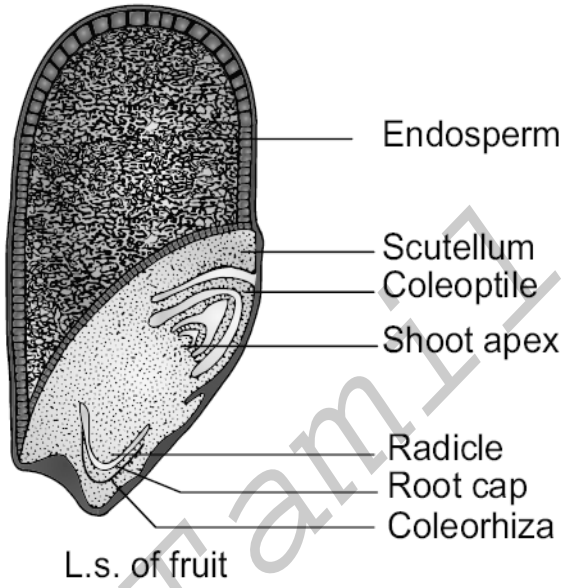
**IMPORTANT DIAGRAMS**

PARTS OF A FLOWER	T.S OF MATURE ANTHR
	 <p>Diagrammatic view</p>
STRUCTURE OF AN OVULE	DICOT SEED - CICER ARIENTINUM
 <p>Ovule structure - diagrammatic</p>	 <p>Seed cut opened</p>
TYPES OF OVULE	
 <p>(a) Orthotropous    (b) Anatropous    (c) Hemianatropous    (d) Campylotropous    (e) Amphitropous    (f) Circinotropous</p>	

**BIOREACTOR**



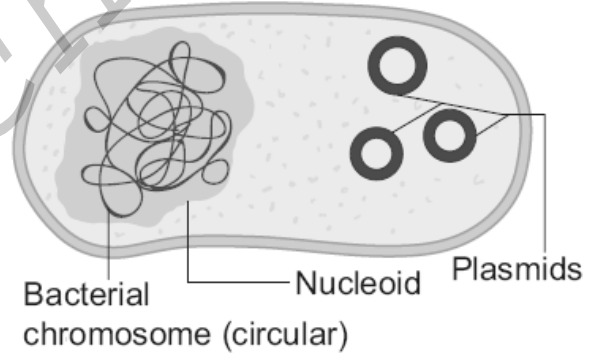
**MONOCOT SEED - ORYZA SATIVA**



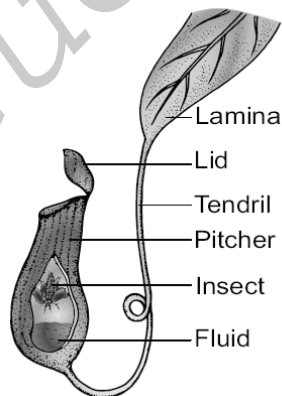
**IPR IN INDIA**



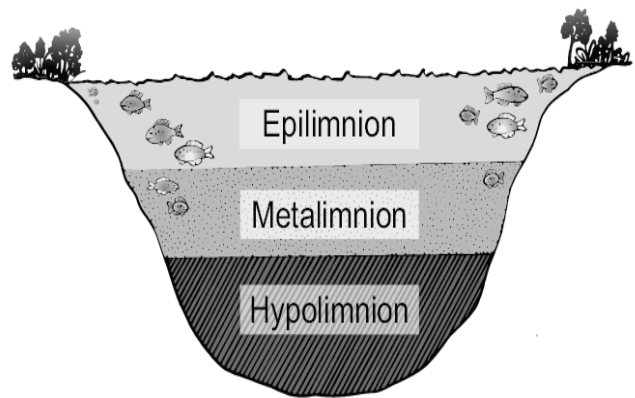
**BACTERIAL CHROMOSOME AND PLASMIDS**



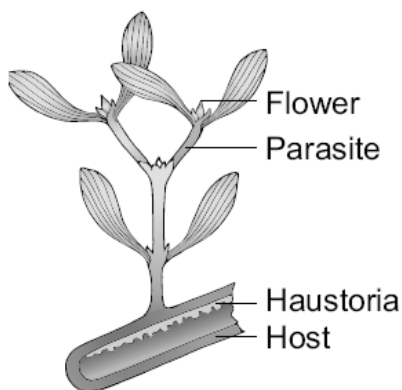
**PITCHER PLANT - WITH INSECT**



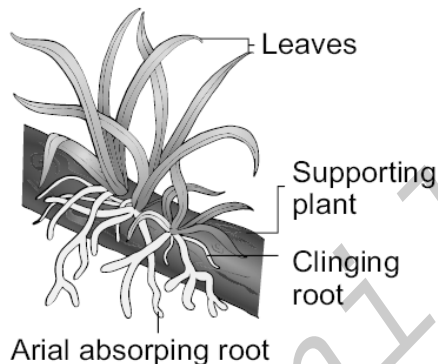
**THERMAL STRATIFICATION OF POND**



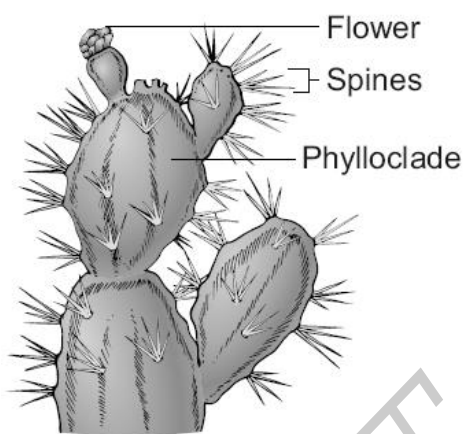
**A PARTIAL STEM PARASITE - VISCUM**



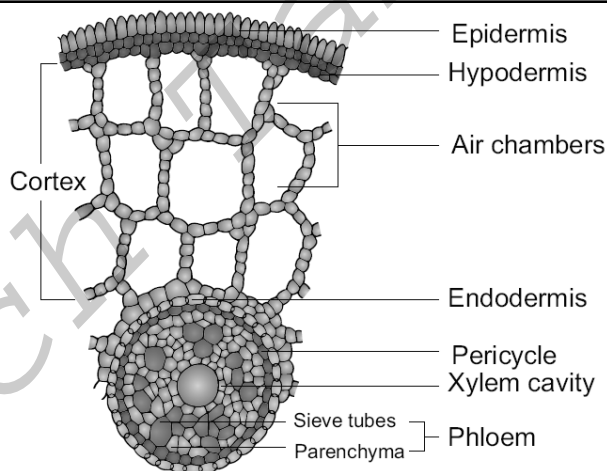
**AN EPIPHYTIC PLANT-VANDA**



**PHYLLOCLADE - OPUNTIA**

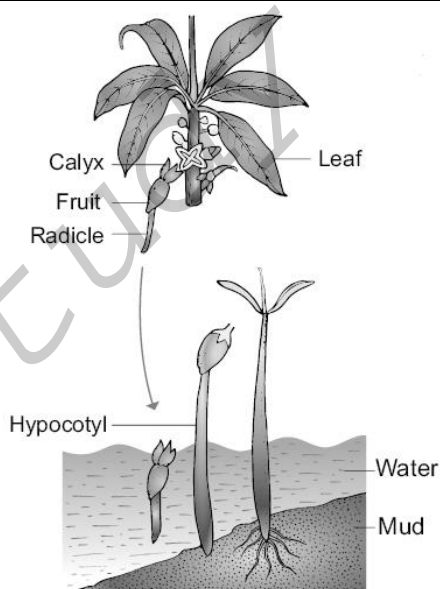


**T.S. OF HYDRILLA STEM**



**T.s of Hydrilla stem**

**VIVIPARY GERMINATION**



**T.S. OF NERIUM LEAF**

