

## Locations of *Welcome to the NHK!*

### Introduction

In the novel's appendix the author explains that there are a great deal of similarities between him and Sato and I believe that this is not limited solely to experiences but to places as well.

Fortunately, many of the following locations are named in the original novel and real landmarks appear in the anime. It is because of this that I have been able to find the following locations.

This is not a comprehensive list of all the locations in all versions of the story and, instead, I have tried to include all of the major locations shown within the anime. I have not included a number of minor locations (such as the restaurant Sato visits with his mother or the hot spring in episode 14) and have skipped the places shown during the Mouseroad arc. I have also been unable to locate the precise location of the suicide island, although not for want of trying.

Many of the locations are different to their real counterparts and, where the relationship between locations seems unconvincing, I have provided evidence to show that the places are connected. It should also be noted that it is not guaranteed that all the locations in the anime have a real counterpart; this a work of fiction and the creators have the right to alter or invent locations as they please.

All images of real life locations are provided with a grid reference and all screenshots from the show are given alongside the episode they are taken with and the approximate time that they appear. There are also a number of references to pages in the novel; I am using this version:

**[https://7chan.org/lit/src/Tatsuhiko\\_Takimoto\\_-\\_Welcome\\_to\\_the\\_NHK\\_novel.pdf](https://7chan.org/lit/src/Tatsuhiko_Takimoto_-_Welcome_to_the_NHK_novel.pdf)**

I have also used a number of other resources and, hopefully, I have credited them sufficiently.

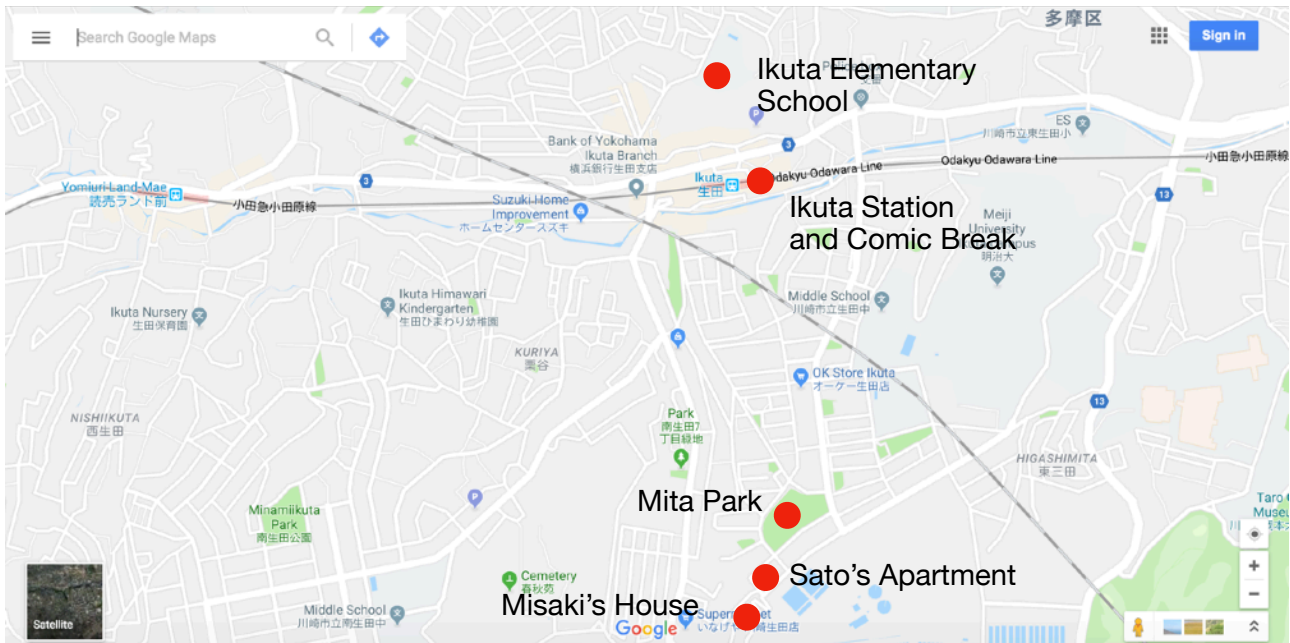
Thanks for reading.

## **Contents**

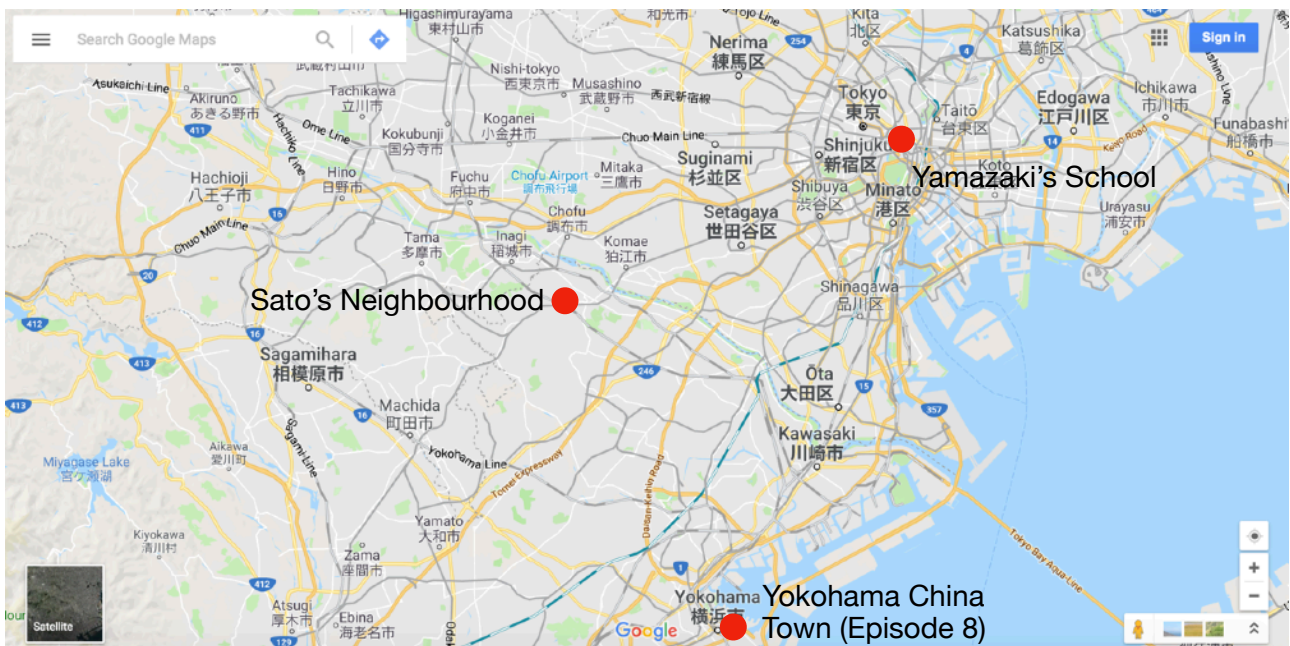
<b>Maps</b> .....	<b>3</b>
Sato's Neighbourhood.....	3
Tokyo .....	3
All Locations .....	4
<b>Sato's Neighbourhood</b> .....	<b>5</b>
Mita House (Sato's Apartment).....	6
Misaki's House.....	7
Mita Park.....	9
Ikuta Station: .....	11
Comic Break, (September 2017): .....	12
Ikuta Elementary School.....	14
Miscellaneous places: .....	14
<b>Yamashita Park (Yokohama China Town)</b> .....	<b>17</b>
<b>Yamazaki's School</b> .....	<b>20</b>
<b>Suicide Island</b> .....	<b>22</b>
<b>Misaki Promontory</b> .....	<b>25</b>

## Maps

### Sato's Neighbourhood



### Tokyo



## All Locations



## Sato's Neighbourhood

### **A note on the author:**

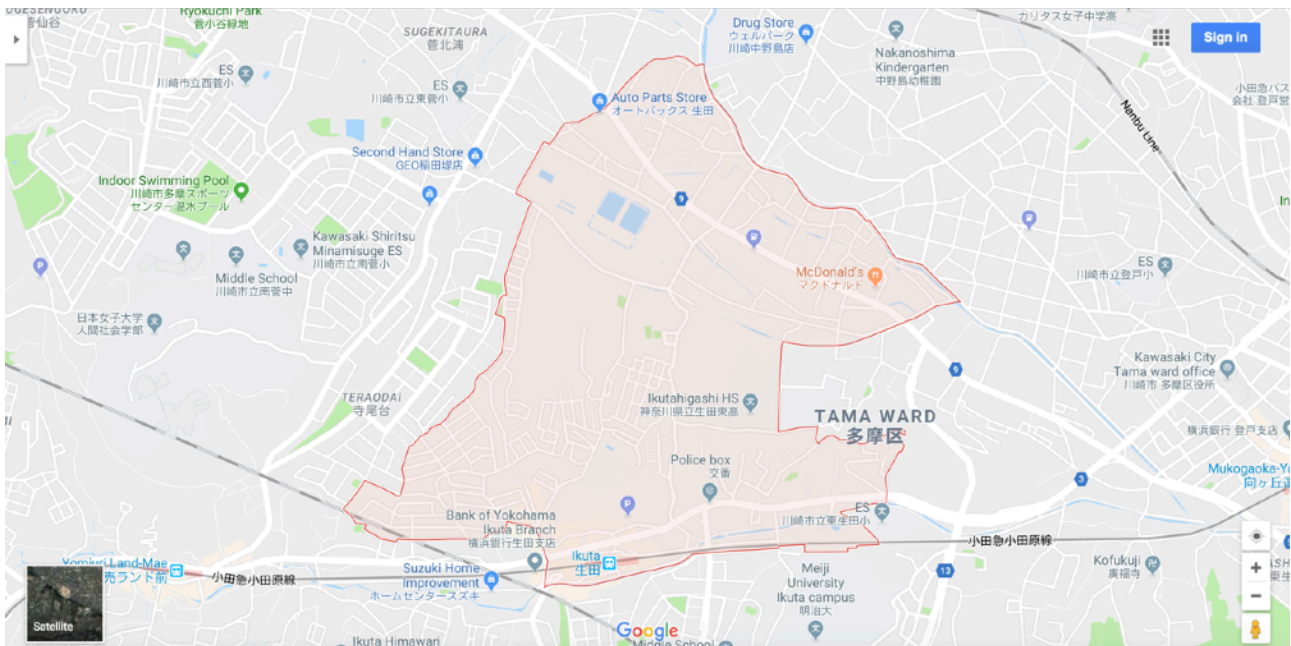
The author has revealed in a recent article that he once lived in Ikuta, Tokyo. Given here is a rough translation of his statement:

'In the early days of the zero era when I was surrounded by darkness, in my early retirement era when I lived in Ikuta's apartment'<sup>1</sup>

This is important as Ikuta is located directly above Sato's neighbourhood and because all the locations in the following section are a walking distance away from the author's old apartment.

Here is Ikuta on Google Maps:

35.620812, 139.543378



<sup>1</sup> [https://tatsuhikotakimoto.com/2018/04/24/youtuber\\_melon/](https://tatsuhikotakimoto.com/2018/04/24/youtuber_melon/)

**Mita House (Sato's Apartment)**  
35.606952, 139.542705



## Misaki's House

35.606285, 139.542584

Note that Misaki's house is not the mansion that appears in the anime. However, due to its proximity to both Sato's house and Mita park, it is fair to assume that this is the location where it is based.

### Episode 23 (8:44)



The real life Mita House is adjacent to the following, similar hill.





This house occupies the same place that Misaki's does in the anime. As you can see, they differ significantly.



## Mita Park

35.606285, 139.542584



The park where Sato and Misaki meet for counselling. If you are interested in looking around the park I would recommend looking it up on Google Maps as it has been documented quite thoroughly.

The park is not exactly as it appears in the anime. For example:

### **Episode 2 (10:42)**



The road to Misaki's house can be seen here. In real life it is closer to Sato's house.

### Episode 5 (15:30)



In the anime the park looks out over the city. This is not the case in the real location.

Interestingly, there is a discrepancy between the anime and the novel as the former resembles Mita Park 1 while the latter refers to park 4.

If you are interested, park 4 is located here:  
35.609746, 139.546339

**Ikuta Station:**

**North entrance to Ikuta Station**

35.615278, 139.542222



**Episode 21 (11:16)**



**Comic Break, (September 2017):**  
35.615354, 139.542564



It is very likely that this is the site of the manga Cafe that Misaki works in and Sato visits. As you can see, it is no longer open.

Here are the photos of the original building:

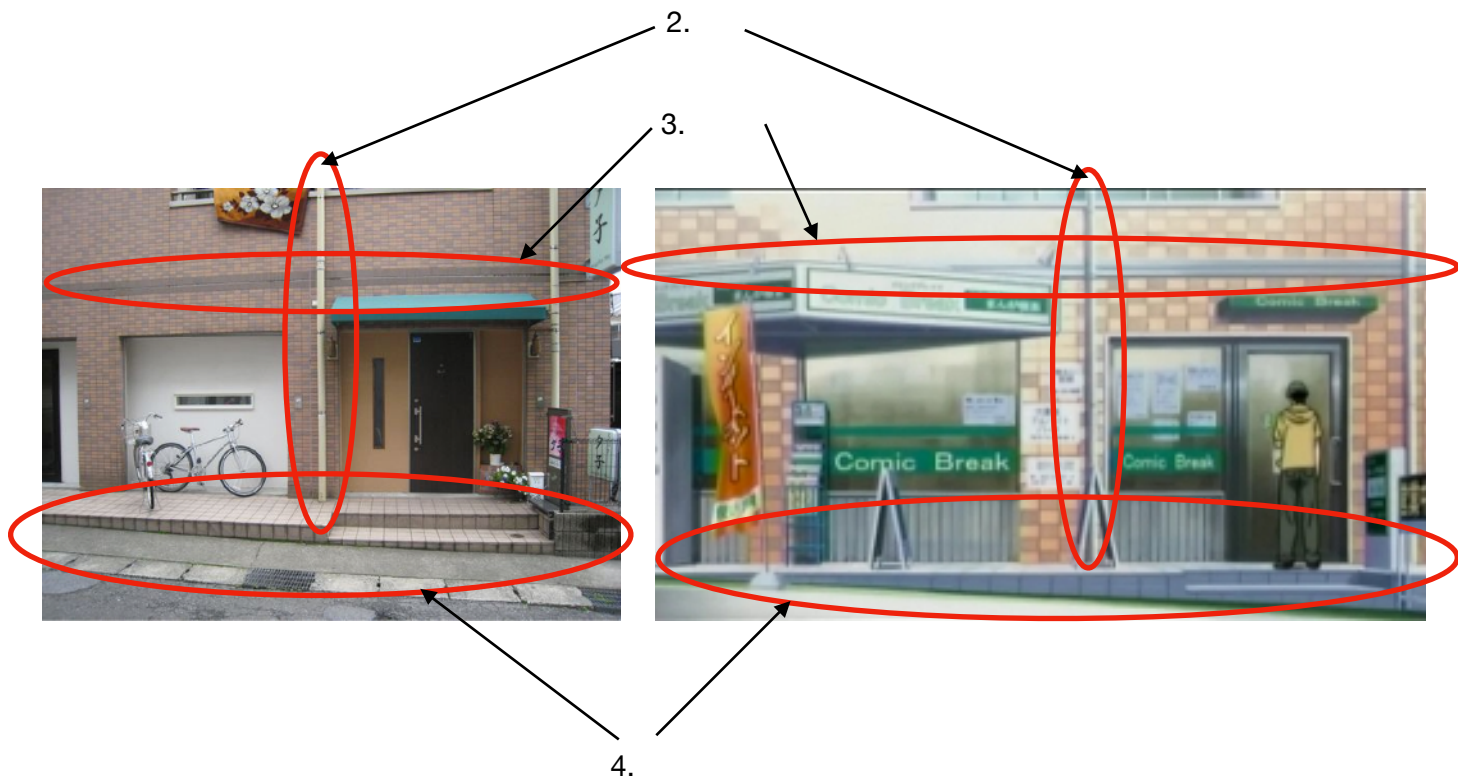


Here is another photo that has been taken in person alongside an image of the cafe in the anime:<sup>2</sup>



Evidence that they are the same place:

1. Similar brick patterns on the wall
2. The guttering pole that intersects the upstairs window
3. The straight, dark line of bricks just above the shopfront
4. The double step that Sato has climbed as well as the slight incline of the road.



<sup>2</sup> Found at: <http://ascape.blog.fc2.com/blog-entry-6.html?sp>  
This blog post was in 2013.

### **Ikuta Elementary School**

35.617363, 139.541760

This is likely to be the same school that is referred to in the novel on page 88. I haven't provided an image as the school itself is dissimilar to the one in the anime and because I am hesitant to take screenshots of an elementary school.

### **Miscellaneous places:**

The following images are taken from <http://ascape.blog.fc2.com/blog-entry-6.html?sp>. I have provided some of them here with co-ordinates.

### **Bridge Near Railroad Crossing:**

35.615016, 139.544526



**Stairs near Gotanda Shrine:**

35.614758, 139.544030



I have found the following collage from MisakiCrazyFan's Twitter account. I do not know when they were taken.



I do not know the source of these images. It may be possible that they are part of the original reference material used by the show's designers. If so, it would be interesting to see if any similar images emerge in the future.

<https://www.youtube.com/watch?v=tnKQuH-Gtjw>

This video provides an excellent overview of Sato's neighbourhood and shows how both the park and Sato's house are visible from Misaki's room. It also shows a number of roads and provides co-ordinates. Although useful, I disagree with the author on the matter of Misaki Promontory as I have been able to locate it.



## Yamashita Park (Yokohama China Town)

35.445781, 139.649775

The park Sato visits with Misaki after meeting his mother in episode 8. You may be interested to know that the author has visited this location although it is uncertain whether he was aware of it when he was writing the text.

<https://twitter.com/tatsuhikokmt/status/991562881291272192>



Here is the fountain at the centre of the park:





**Episode 8 (17:17)**



Note the similarities between the statue and the boat in the anime and in real life. Structure a. is also reproduced within the anime.

## Episode 8 (19:19)



Sato and Misaki proceed to walk to this location. I can't find this place although I imagine it would be around 35.444315, 139.652318 if it were to exist

Both characters climb a set of stairs in order to get here so it must be higher up than the boardwalk itself. The given location is the only part of the boardwalk/park that is elevated so it follows that Sato and Misaki are around there.

I cannot find an area that provides a similar view which leads me to believe that this place was invented much like the region in Mita park which looks over the city. This is likely to be a stylistic choice as the show includes a number of vistas such as the one in Mita Park, the view from Misaki's house, the cliff on the suicide island etc.

**Yamazaki's School**  
35.700636, 139.755784

According to the novel, Yamazaki attends the 'Yoyogi Animation Institute'<sup>3</sup> and, although it has a number of campuses over the country, it is likely that he attends the school in Tokyo. The Tokyo school is comprised of three buildings<sup>4</sup>, all of which deviate in some capacity from the image shown below.

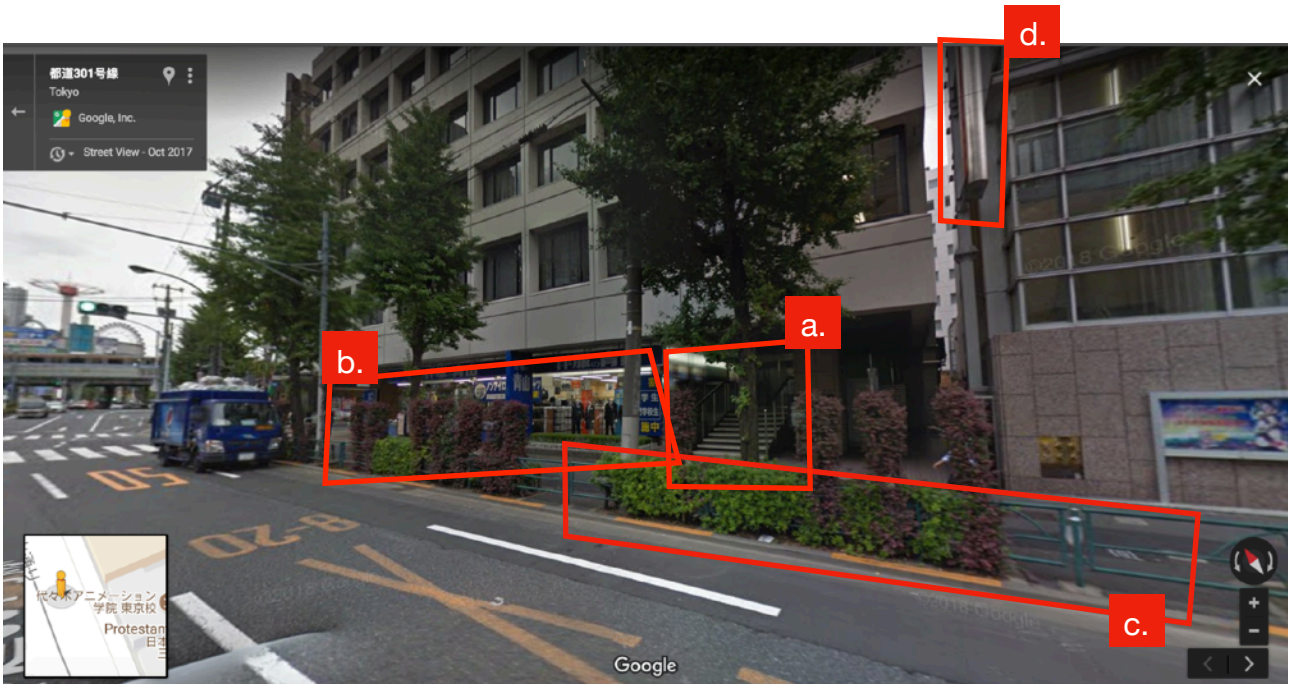
**Episode 6 (10:35)**



<sup>3</sup> *Welcome to the NHK*, p138

<sup>4</sup> <https://www.yoani.co.jp/school/tokyo/>

However, there are parallels with building one:



Both images have a set of stairs (a.) that lead into the building and are located next to what appears to be a convenience store (b.). Also look at the railings which separate the road from the pavement (c.) as both are rectangular and have a horizontal rail running through each segment. Point d. refers to the signs outside of the respective buildings and are shown in more detail below:

### Episode 6 (10:46)



Both signs are similarly shaped and the disagreement between the names given (Kokogi in picture one and YOANI in picture two) is likely due to legal issues.

Unfortunately the two places differ significantly as the street in the Anime curves out of the shot while its real counterpart ends at an intersection. Despite this, I feel convinced that they are the same place.

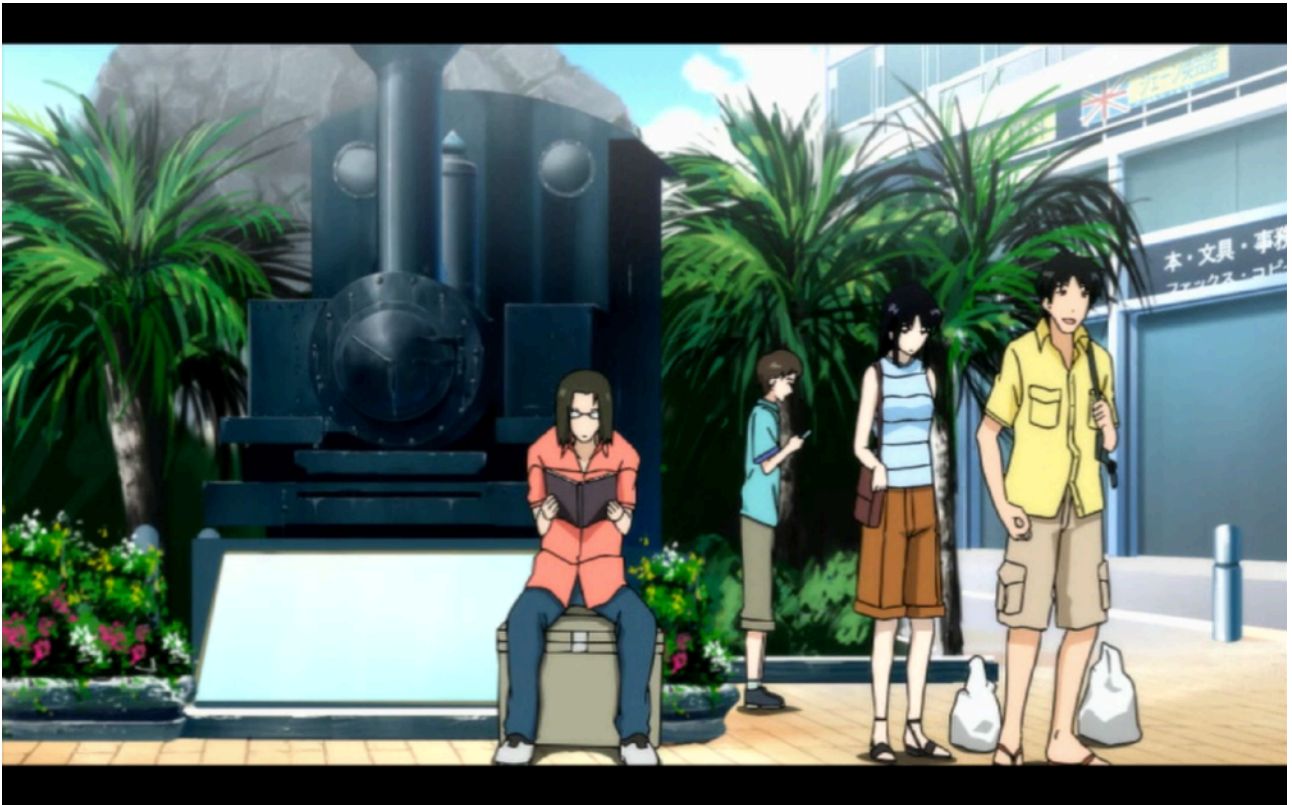
## Suicide Island

I have been unable to find the island itself although I have found the location where it should, at least theoretically, be located.

While travelling to the island Sato arrives at Shin-yoko-minato station:

It is likely that the real life equivalent is Atami station because both locations have a model train, a similarly coloured pavement and a small road without a dropped curb.

## **Episode 12 (2:37)**

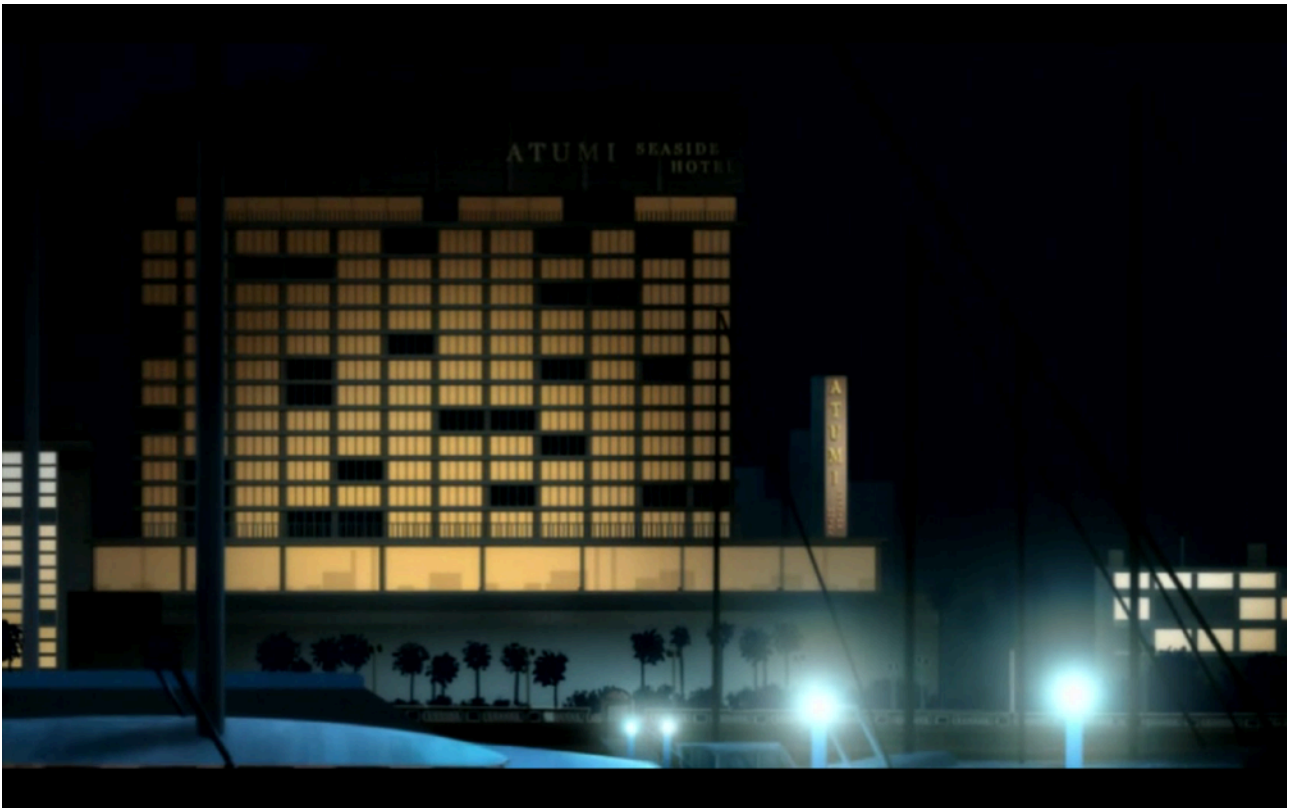


35.102792, 139.077882

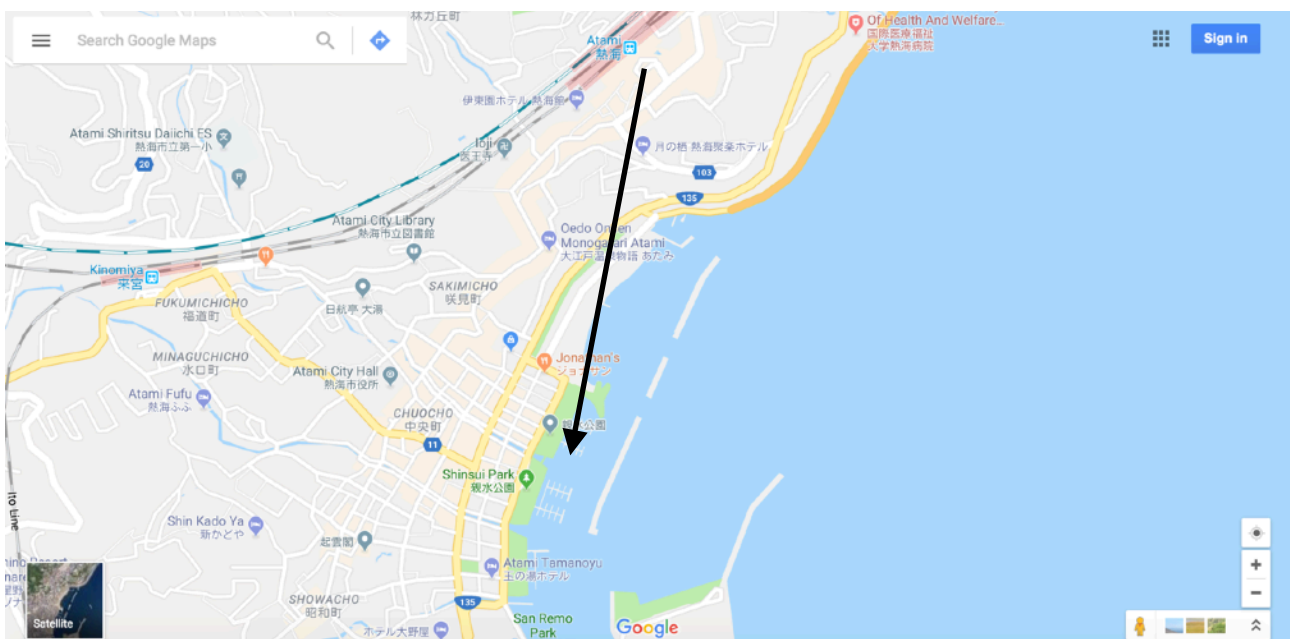


The following screenshot of Atumi hotel also suggests that they are in Atami due to the similarity of the names:

### Episode 13 (6:40)



The characters, after arriving at the station, walk to a marina. It is likely to be this location as it is the closest to the station:



Unfortunately, I cannot find the island itself. However, it is said to be a 'few kilometres' off from the coast of Atami and should theoretically lie within the given archipelago:

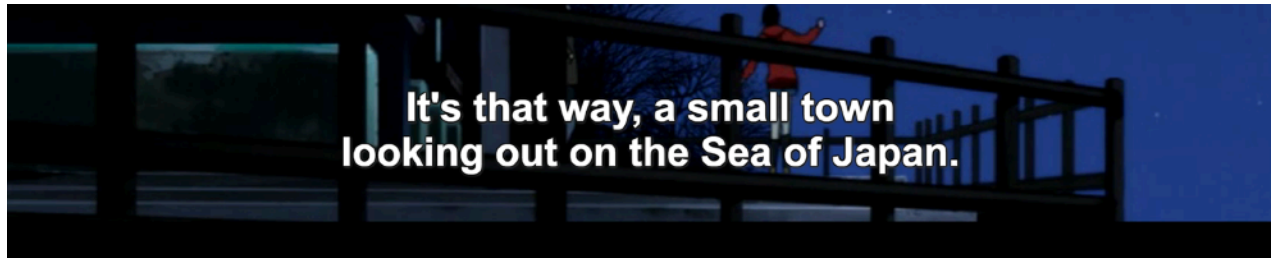




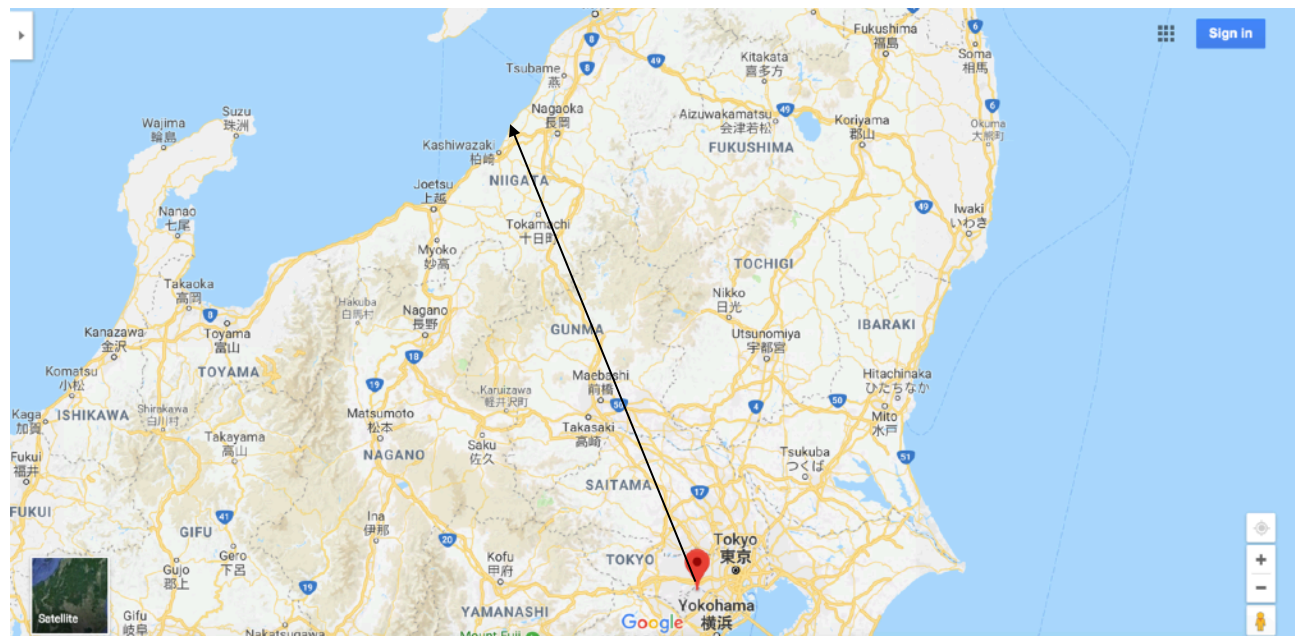
**Misaki Promontory**  
37.483995, 138.617894

Misaki says this about her home town and the promontory:

**Episode 23 (5:00)**



In the novel Misaki demonstrates that her hometown is in 'a north-by-northwest direction'<sup>5</sup> so, presumably, around here:



<sup>5</sup> Novel, p176

This is the location of Kannon cape:  
37.483995, 138.617894



**Episode 24 (1:41)**



Both pictures share a number of features; for example, both are wooded areas and there are houses located on both promontories (Misaki's house in the anime and an unrelated building and lighthouse in real life). Additionally, the landscape is shaped similarly in both pictures and the road curves in a similar fashion. Interestingly, the promontory is near to **Nagahama** Beach Resort and Misaki's other name is **Nakahara**. This is an interesting coincidence and I would not be surprised if this was the origin of the name.

I believe that the previous image was taken at low tide and the following image, taken at high tide, better matches the location in the anime:



<https://plus.google.com/photos/photo/101936951693602422604/6454098446836845074>

Aside from the minor differences between the two locations, I am confident that this is the original spot.