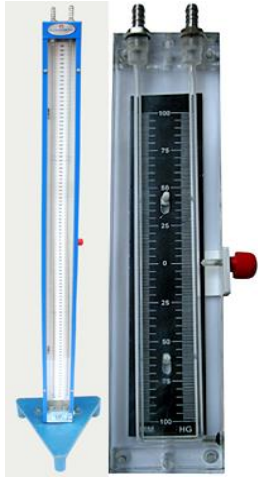


MANOMETER

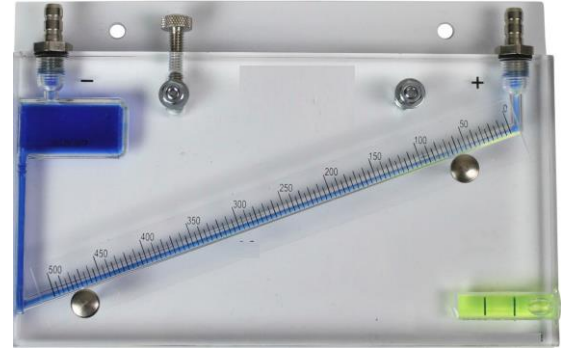
DESCRIPTION “KABIR” make U-Tube /Single limb /Inclined tube manometer is used for precision measurement of pressure, vacuum, differential pressure, and flow measurement in plants & labs where certain accuracy is required.



U-TUBE MANOMETER



SINGLE LIMB MANOMETER



INCLINED TUBE MANOMETER

MATERIALS OF CONSTRUCTION

Metering Tube : Special uniform bore thick walled borosilicate glass tube / Acrylic
Packing : Teflon / Neoprene
Casing : M.S. /Aluminum / Acrylic Casing from three sides and aluminum cover with transparent acrylic front.
Scale : Scale milky white PVC with Black Colour Lining and figures having 1mm Marking
Painting : Industrial Grade painted / Powder coated

CHARACTERISTICS

Solid Acrylic body
Portable
Fabricated from 1" thick, clear acrylic block
Unbreakable
Stable and free of distortion
Consisting of Drilled-in indicating limbs
Absolute etc..

SPECIFICATIONS

- Consisting of stainless steel wells and fittings
- Utilizing expanded scales for unusual sensitivity
- Easy reading of low pressures
- Draft of small differential pressure
- Aluminium casing from three sides
- Transparent acrylic front cover
- Protected with metallic frame
- Straight BOROSIL Indicating Glass Tube gland
- Packed in end SS block to facilitate easy removal
- Acrylic scale range 50-0-500 to 1000-0-1000 mm wc / Hg