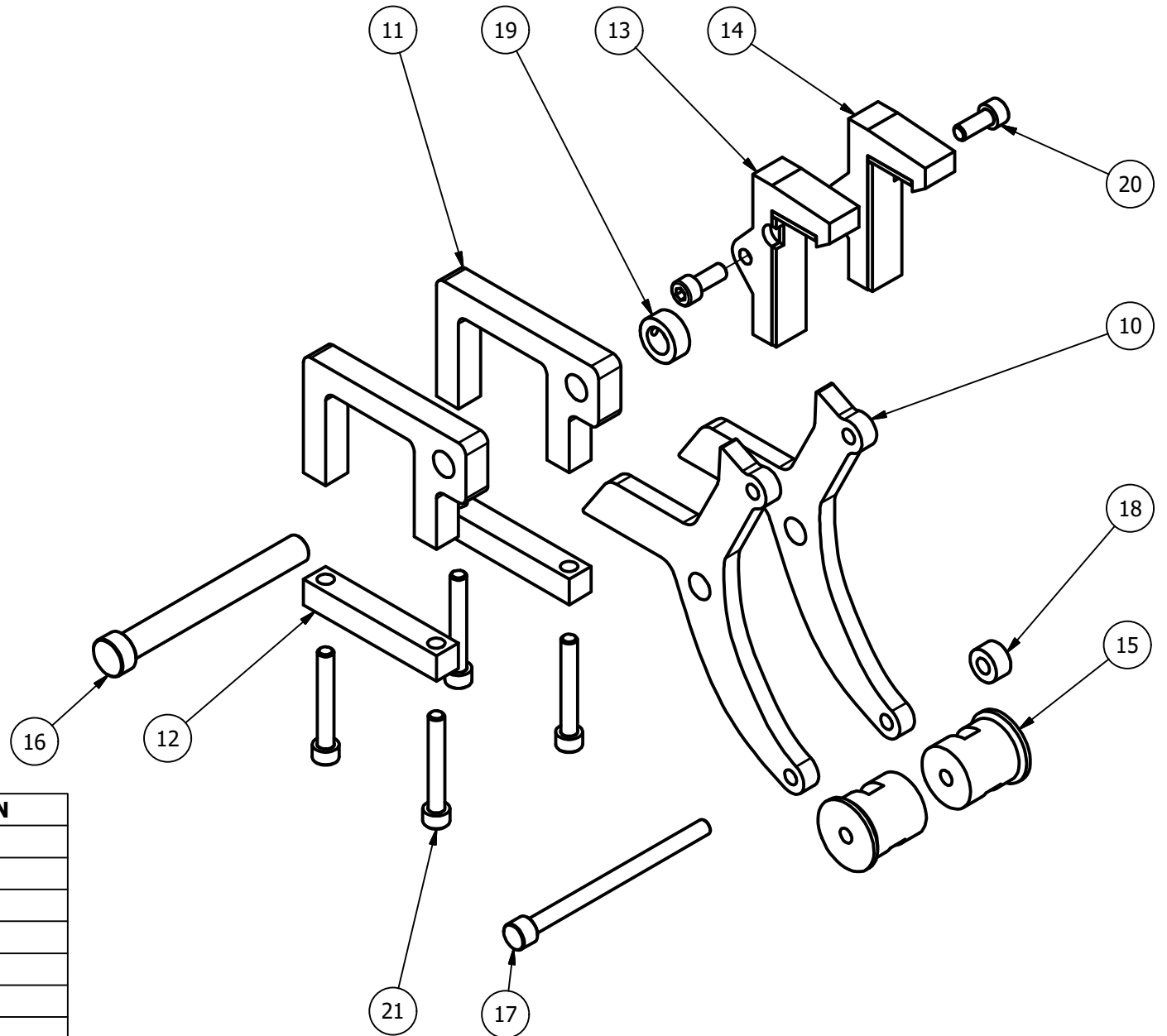


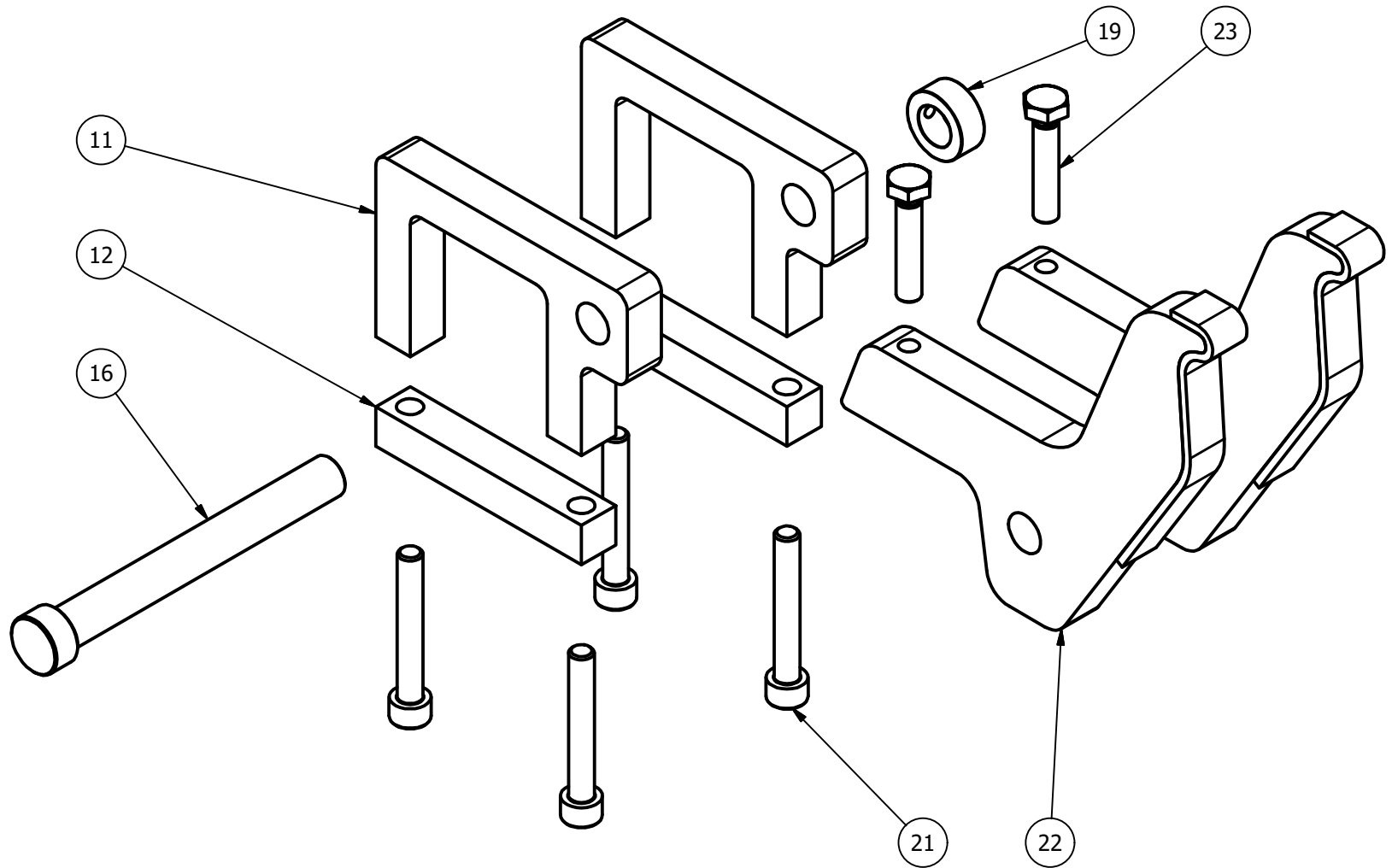


Designed by Dotharth	ArcheryTalk	Date 06-01-17
Fingers (Hoyt 2016 & standard)		Mass n/a
General view		Material n/a
		Scale Sheet 1 / 10



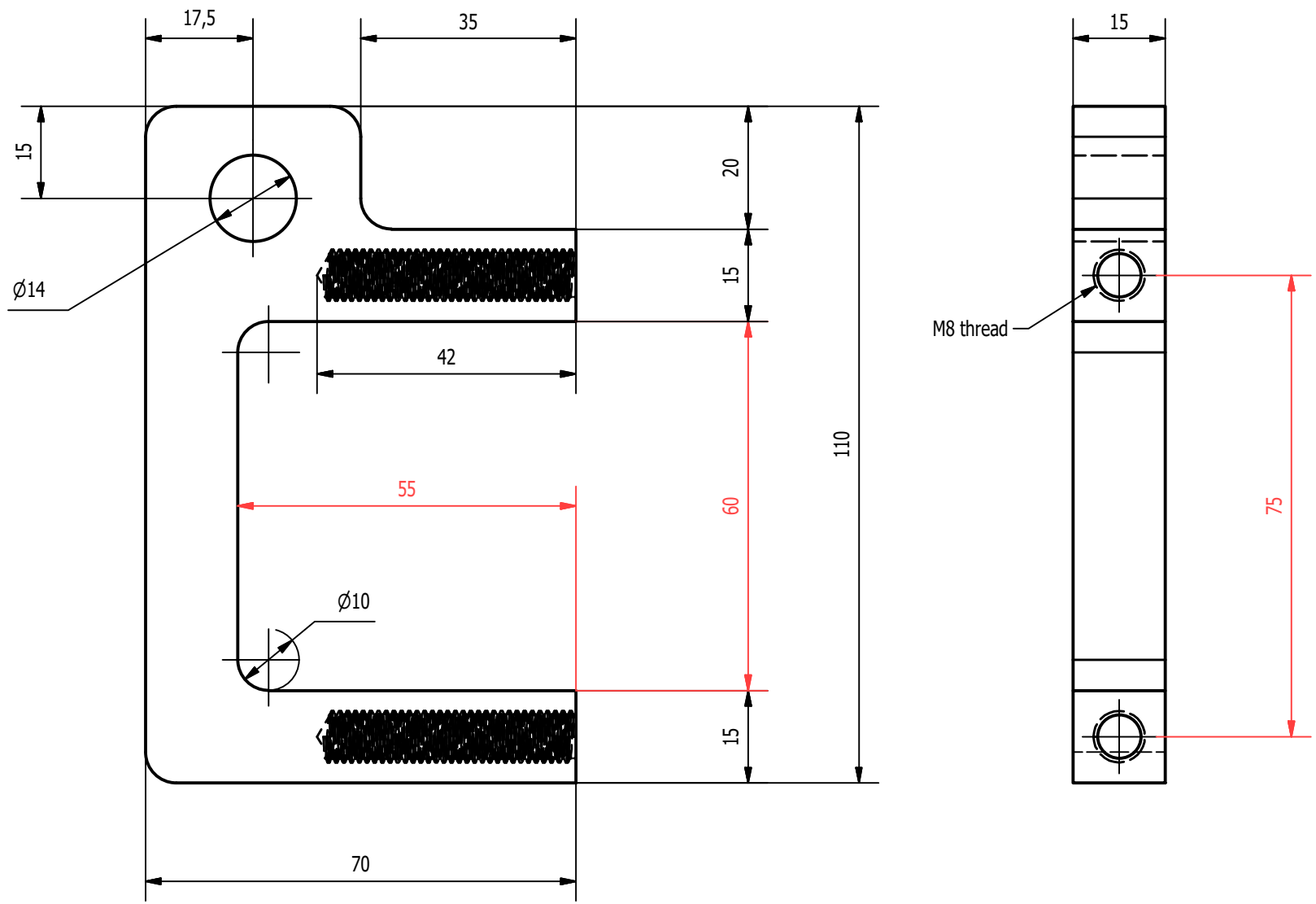
ITEM	QTY	PART NUMBER	DESCRIPTION
10	2	Main plate	
11	2	Support bracket	
12	2	Support bracket 2	
13	1	Finger_right	
14	1	Finger_left	
15	2	Roller	
16	1	Axle M14	
17	1	Axle M8	
18	1	Locking ring M8	
19	1	Locking ring M14	
20	2	DIN 912 - M8 x 20	Cylinder Head Cap Screw
21	4	DIN 912 - M8 x 55	Cylinder Head Cap Screw

Designed by Dotharth	ArcheryTalk		Date 06-01-17
Fingers (Hoyt 2016 & standard)		Mass n/a	Material n/a
Exploded view (Hoyt 2016)		Scale 1 : 3	Sheet 2 / 10



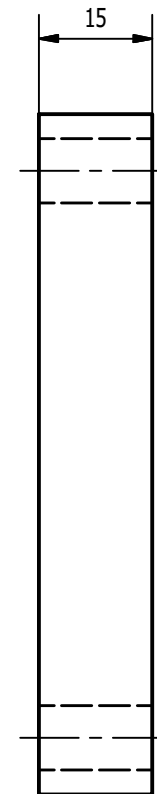
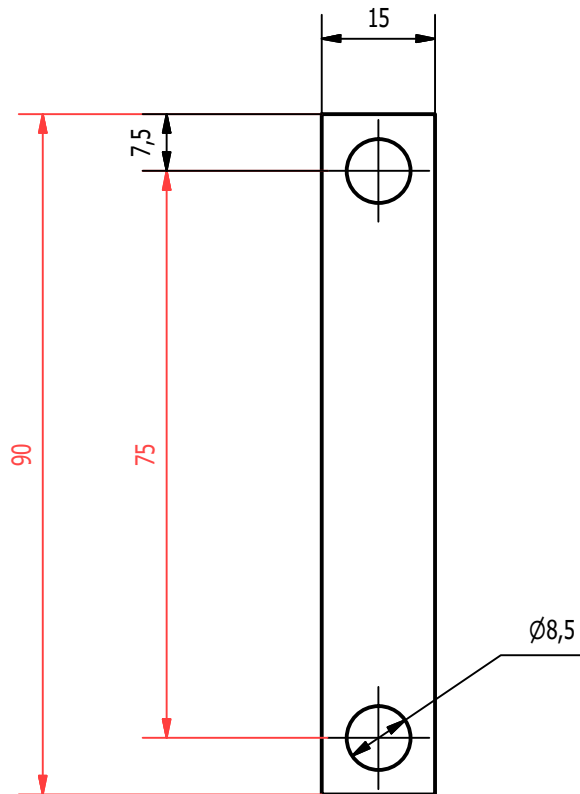
ITEM	QTY	PART NUMBER	DESCRIPTION
11	2	Support bracket	
12	2	Support bracket 2	
16	1	Axle M14	
19	1	Locking ring M14	
21	4	DIN 912 - M8 x 55	Cylinder Head Cap Screw
22	2	Standard finger	
23	2	DIN 933 - M8 x 40	Hex-Head Bolt

Designed by Dotharth	ArcheryTalk		Date 06-01-17
Fingers (Hoyt 2016 & standard)		Mass n/a	Material n/a
Exploded view (standard)		Scale 1 : 2	Sheet 3 / 10



Red dimensions : Adjust these dimensions to the size of the square tube of your bow press

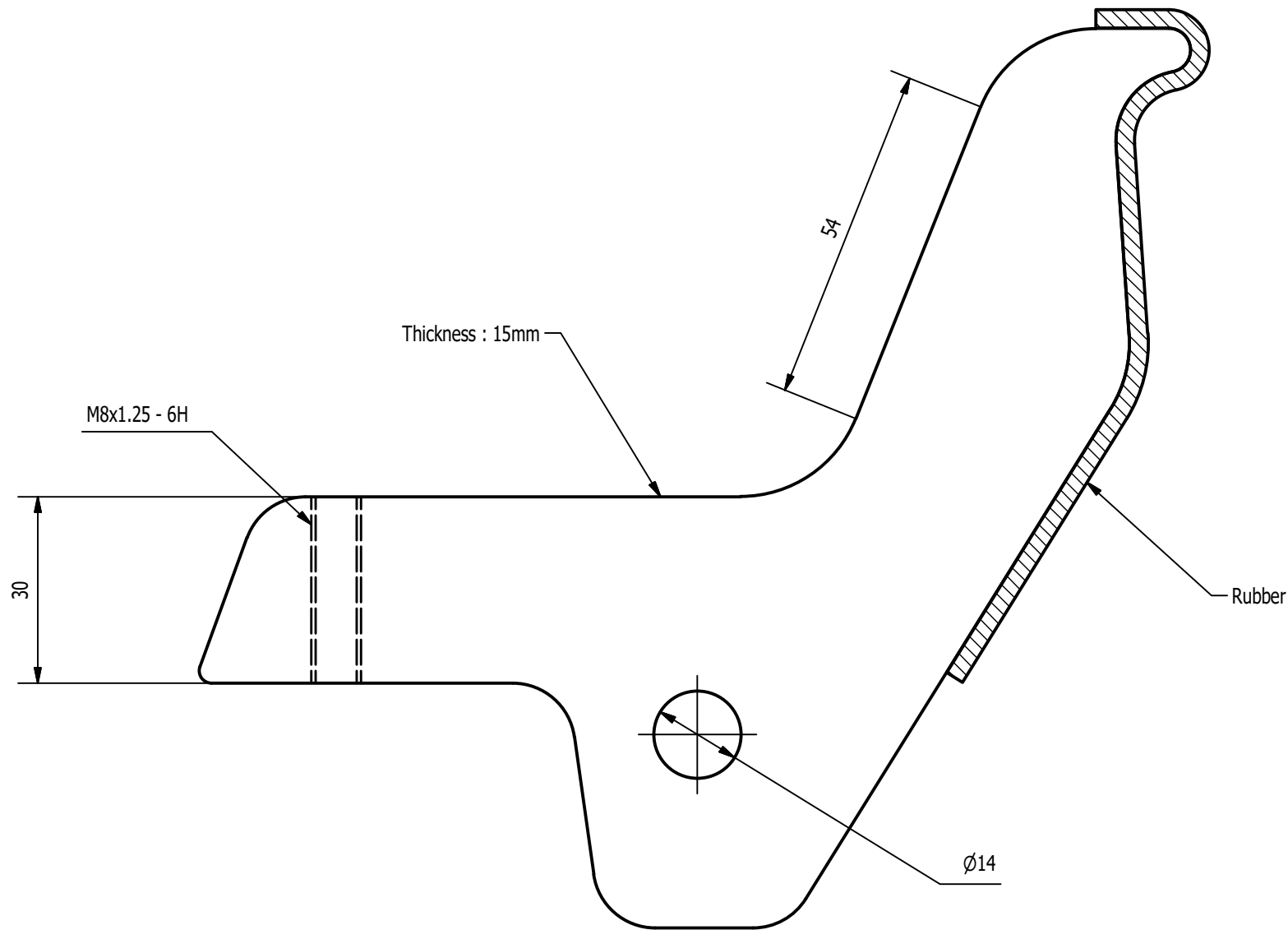
Designed by Dotharth	ArcheryTalk		Date 06-01-17
Fingers (Hoyt 2016 & standard)		Mass 0,4 kg	Material Steel, Mild
Support bracket		Scale 1 : 1	Sheet 4 / 10
Support bracket.ipt			



Make sure to match the dimensions of the **Support bracket**

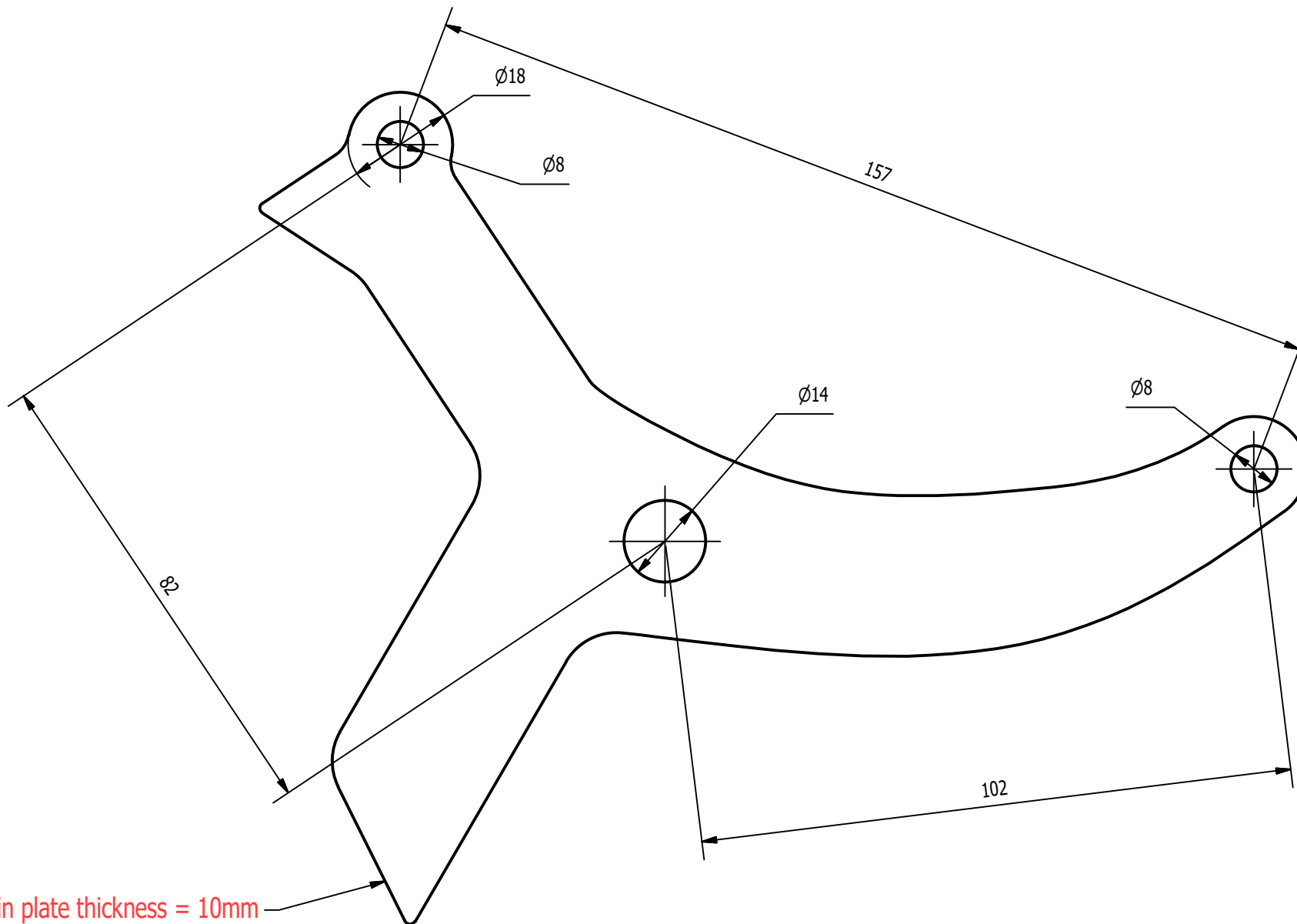
Designed by Dotharth	ArcheryTalk	Date 06-01-17
Fingers (Hoyt 2016 & standard)		Mass 0,1 kg
Support bracket 2		Material Steel, Mild
		Scale 1 : 1
		Sheet 5 / 10

Support bracket 2.ipt



You can print this page to scale (A4 sheet without border) and use the drawing as a template to cut the steel. Check the two dimensions (54 & 30mm) to confirm your printer printed the drawing to scale.

Designed by Dotharth	ArcheryTalk	Date 06-01-17
Fingers (Hoyt 2016 & standard)		Mass 1.0 kg
Standard finger		Material Steel, Mild
		Scale 1 : 1
		Sheet 6 / 10

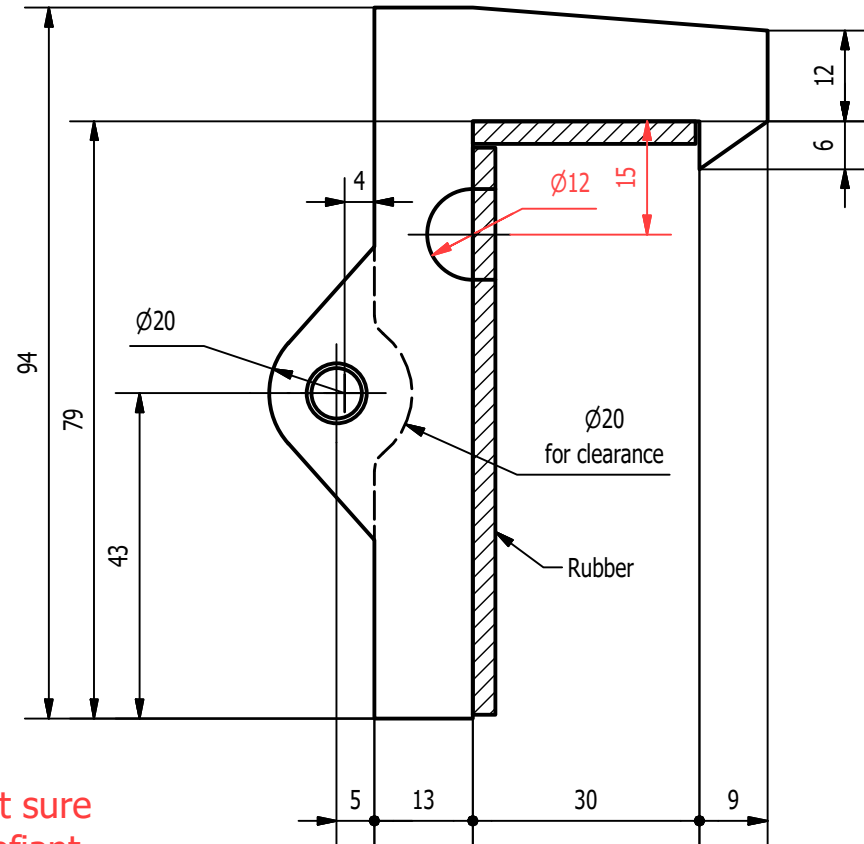
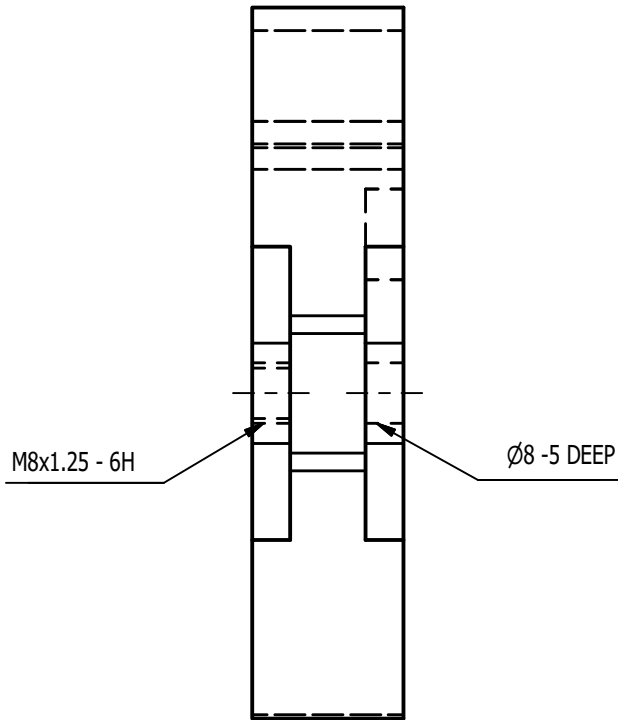
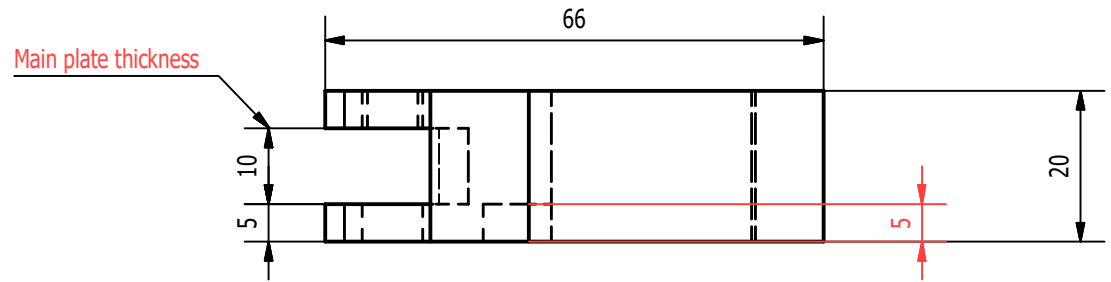


Main plate thickness = 10mm

Tolerances of the **Main plate** doesn't matter much as long as the distance between the 3 holes are kept the same. You can print this page to scale (A4 sheet without border) and use the drawing as a template to cut the steel.

Designed by Dotharth	ArcheryTalk	Date 06-01-17
Fingers (Hoyt 2016 & standard)		Material Steel
Main plate (Hoyt 2016)		Scale 1 : 1
		Sheet 7 / 10

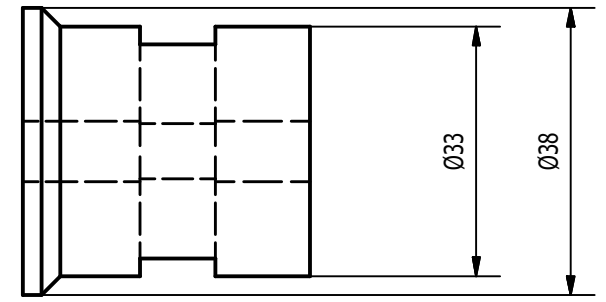
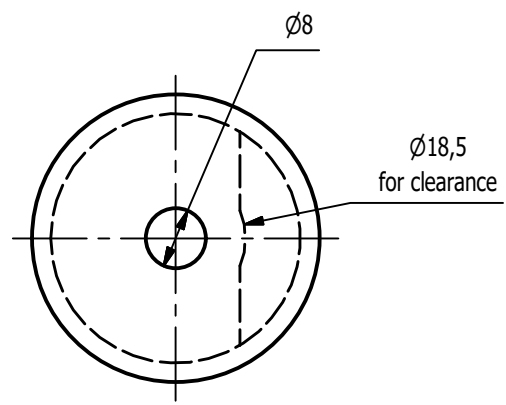
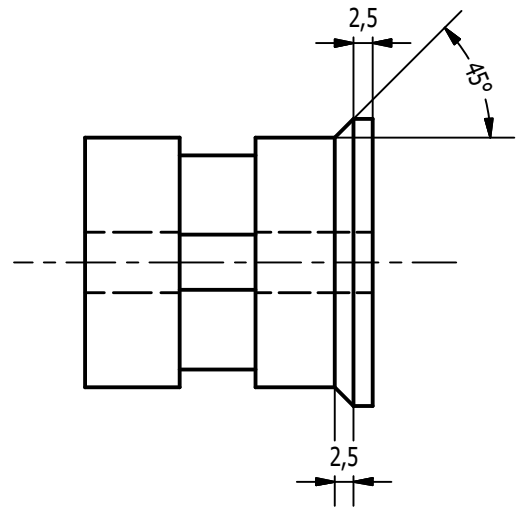
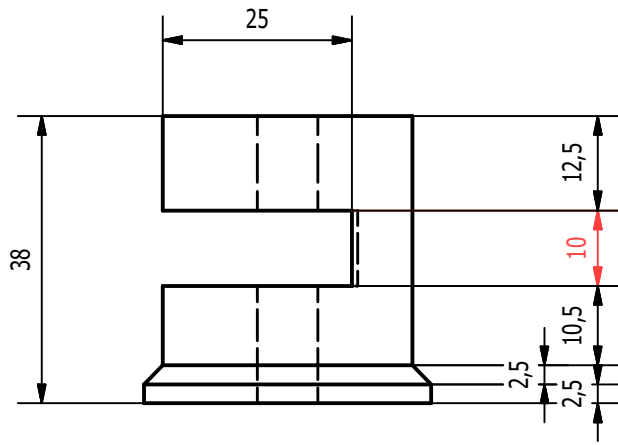
This is the drawing for the RIGHT finger.
 For the LEFT one, do not forget to inverse the
 two holes location (threaded M8 hole and Ø8
 clearance hole) and the yoke peg feature.



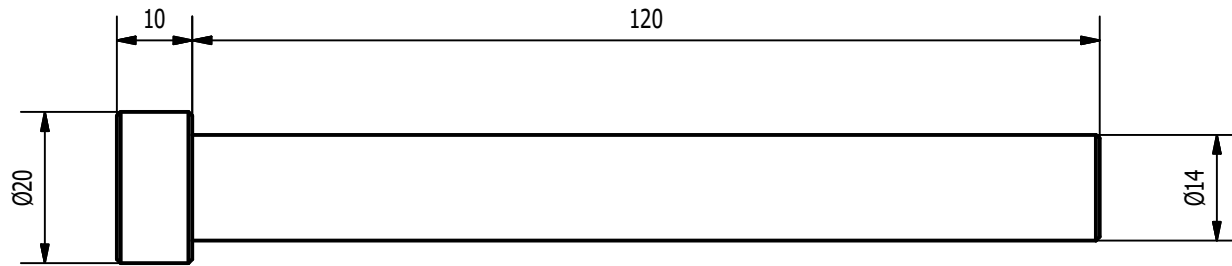
Red dimensions : Clearance feature for the yoke peg. I'm not sure
 of what size it is and where to locate it since I do not own a Defiant
 bow yet. This feature is needed since I used 20mm thickness for the
 finger (original LCA thickness is about 15mm and doesn't need this
 feature).

If you plan to use 15mm thickness for the fingers, you'll need to use
 7-8mm **Main plate** thickness instead of 10mm.

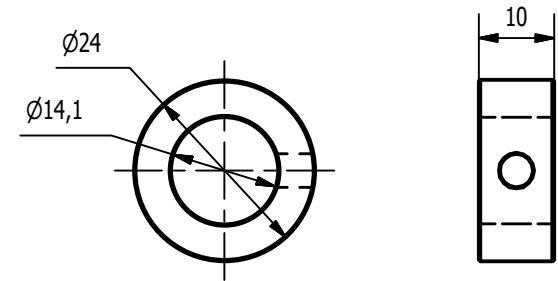
Designed by Dotharth	ArcheryTalk		Date 06-01-17
Fingers (Hoyt 2016 & standard)		Mass n/a	Material Steel
Right finger (Hoyt 2016)		Scale 1 : 1	Sheet 8 / 10



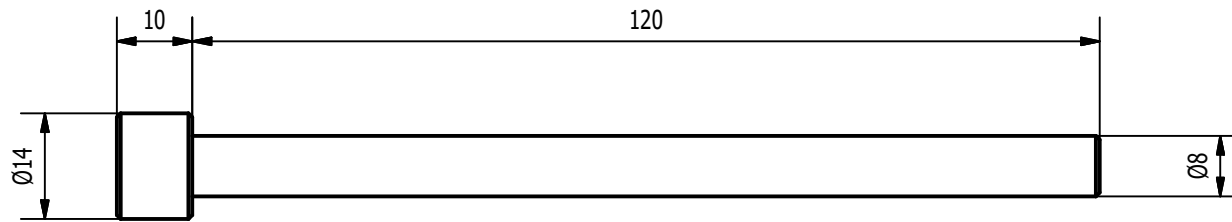
Designed by Dotharth	ArcheryTalk	Date 06-01-17
Fingers (Hoyt 2016 & standard)		Mass n/a
Roller (Hoyt 2016)		Material Nylon
Scale 1 : 1		Sheet 9 / 10



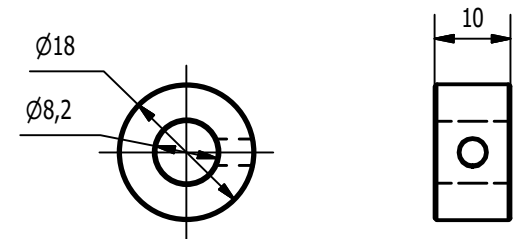
Axle Ø14



Locking ring Ø14



Axle Ø8



Locking ring Ø8

Designed by Dotharth	ArcheryTalk	Date 06-01-17
Fingers (Hoyt 2016 & standard)		Mass n/a
Axle Ø14 & Ø8		Material Steel
		Scale 1 : 1
		Sheet 10 / 10