

Animation Process

Layout

Key Poses

Initial Pose

Anticipation Pose

Action Pose

Rest Pose

Blocking

In-betweens or Breakdowns

Spline

Timing and Spacing

Squash and Stretch (weights)

Arc's

Easy in Easy out

Layout



Key Poses

1



Initial Pose

2



Anticipation Pose

3



Action Pose

4



Rest Pose

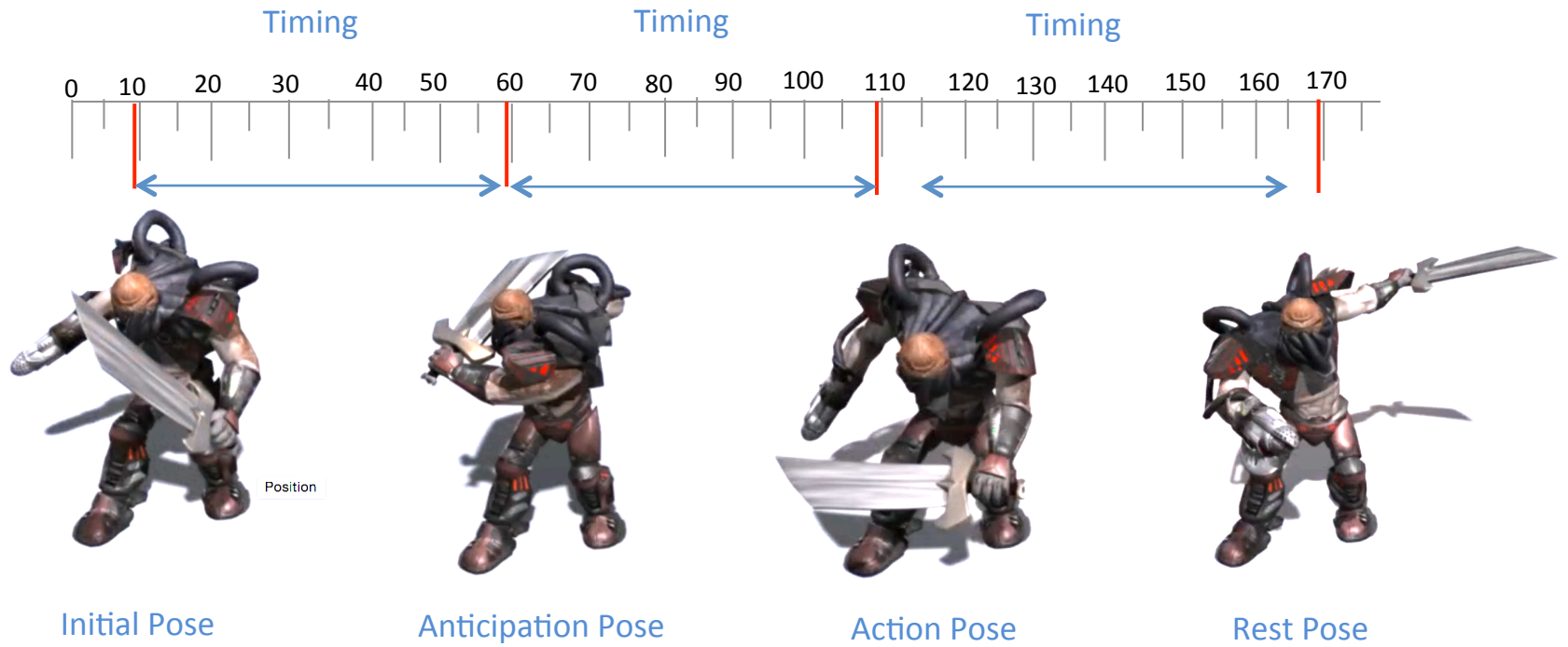
Blocking

In-betweens or Breakdowns



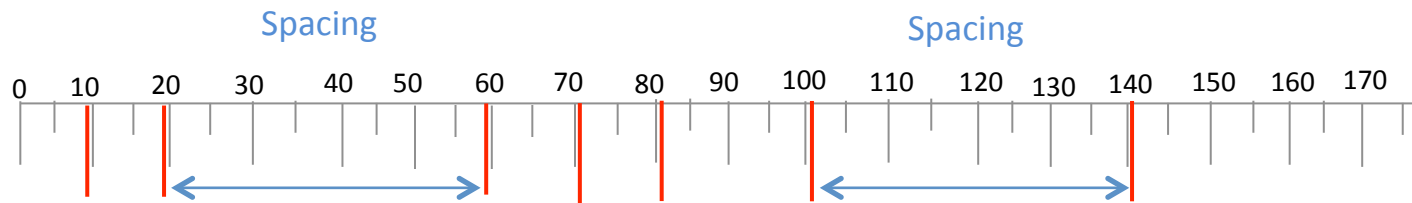
Spline

Timing and Spacing



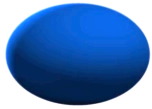
Spline

Timing and Spacing



Spline

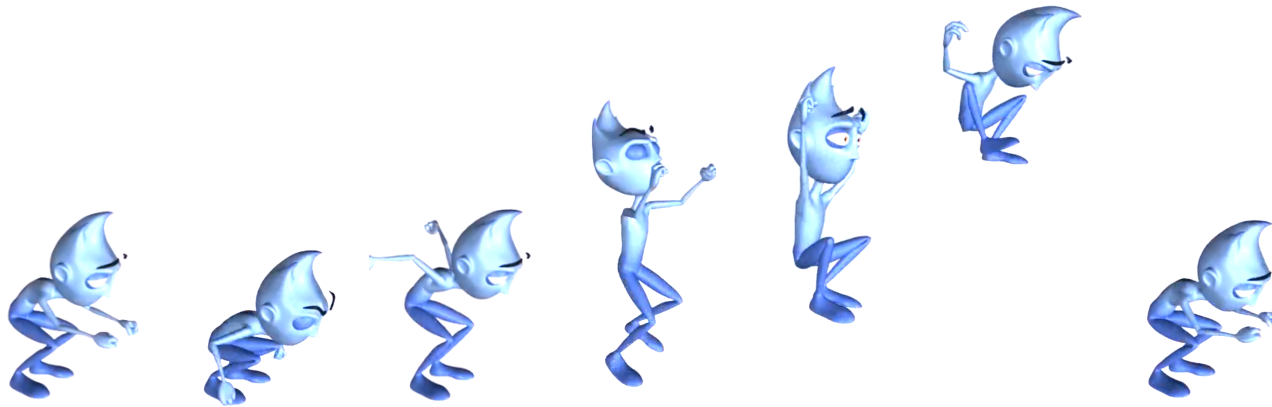
Squash and Stretch (weights)



Squash

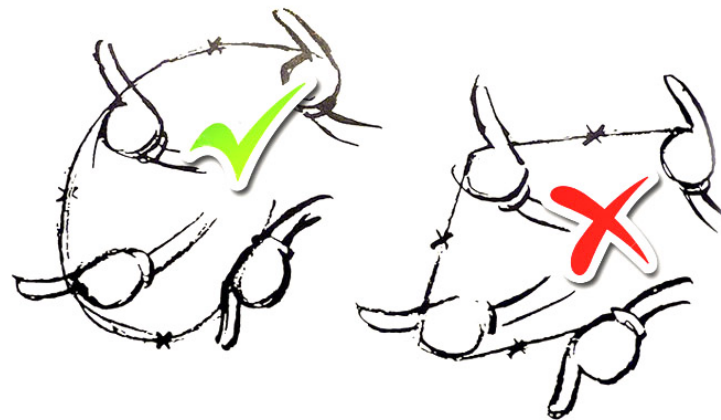


Stretch



Spline

Arcs



Spline

Easy in Easy out



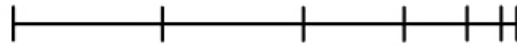
Linear Spacing (Linear Interpolation)

Equal movement between each frame.



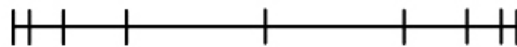
Slow in (Easy ease out)

Small movements at first, increasing over time.



Slow out (Easy ease in)

Large movements, decreasing at the end of the action.



Slow in - Slow out (Easy Ease)

Small movements increasing, then large movements decreasing.

Position



Ease In

Action

Ease Out