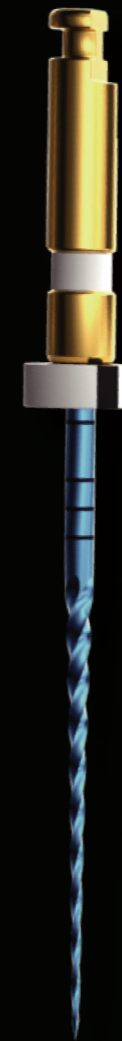


SENTA BLUE

FLEXIBILITY and STRENGTH PROVIDED by BLUE HEAT TREATMENT AVAILABLE in PRO TAPER SYSTEM



● ISO Standard Color
Tip size indicator

Rubber Stopper

Variable Pitch
Gradually-increased from tip to handle to prevent suction and locking

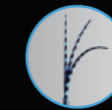
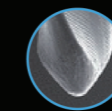
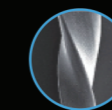
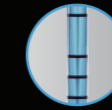
Precise Length Marking

Sharp Cutting Edge
Optimizes treatment procedure

Safe Non-Cutting Tip
Decreases canal transportation, ledge formation and apical extrusion

Ni-Ti Wire and Heat Treated Control Memory Features:

- Strengthen cyclic fatigue resistance
- Enhance flexibility
- Lower the risks of treatment



| | | | | | | | |
|----------------|------------------|---------|----------|----|----|----|----|
| EF BLUE | Color | | | | | | |
| | Tip Size | SX | S1 | S2 | F1 | F2 | F3 |
| | Length (mm) | 19 | 21/25/31 | | | | |
| | Cross Section | | | | | | |
| | Suggested Speed | 300 rpm | 350 rpm | | | | |
| | Suggested Torque | 3 N.cm | 2.5 N.cm | | | | |

Utilization Procedure

