

TABLE OF CONTENT

pages

2-3 **Factory Snapshot v2 thanks to magicallala**

4-17 **Factorys + Pictures**

4 **Angel Factory**

4 **Baili**

4 **Beige Couch**

5 **Birdcage**

5 **Black Frame**

5 **Black Marble**

6 **Classics Factory**

6 **CD**

6 **ESFactory**

7 **Feite**

7 **Floral**

7 **GD**

8 **Glassdoor**

8 **God Factory**

8 **Golden Tile**

9 **Grey Couch**

9 **Huahui**

9 **Jipin**

10 **JLH**

10 **JXG**

10 **Lotus**

11 **Mango**

11 **Marble**

11 **MBB**

12 **Mingxing**

12 **Nickloe**

12 **Original Factory**

13 **Ounifan**

13 **Pomegranate**

13 **Qiutian**

14 **Red Brick**

14 **Stripes**

14 **SYmode**

pages

15 **VV**

15 **Wenfa**

15 **White Branch**

16 **White Chair**

16 **Yellow Wall**

16 **Yi**

17 **Yisili**

17 **Yoyo**

17 **187**

Factory snapshot

Key ■ Speciality ■ Stock

	Balenciaga	Boyy	Bulgari	Burberry	Celine	Chanel	Chloe	Dior	Fendi	Gucci	Goyard	Hermes	Loewe	LV	Prada	Valentino	YSL
Angel Factory AKA - Diana (Heidi)					Celine			Dior									
Baili		Boyy			Celine	Chanel			Fendi					LV			
Beige Couch AKA Beige Marble Factory (RL) and Wuxiaojie (Alice)					Celine												
Birdcage AKA Bonica (Bank)					Celine						Goyard		Loewe	LV			
Black Frame AKA - JS (Alice)															Prada		
Black Marble AKA - Bonica (Bank)							Chloe							LV			
Classics Factory						Chanel											
CD						Chanel											
ESFactory AKA - Ugly Carpet Factory (RL) and Water Cup Factory (RL)					Celine												
Feite AKA - Feit (Alice)																	YSL
Floral										Gucci							
GD						Chanel											
Glassdoor														LV			
God Factory						Chanel		Dior						LV			
Golden Tile AKA - Tile Factory (RL)						Chanel											
Grey Couch AKA - Wood Table Factory (Martha) and Debi (Heidi)	Balenciaga		Bulgari	Burberry	Celine	Chanel		Dior			Gucci		Loewe				YSL
Huahui AKA - HH (Alice)														LV			
Jipin													Loewe				
JLH								Dior		Gucci							YSL
Lotus												Hermes					

Factory snapshot

Key ■ Speciality ■ Stock

	Balenciaga	Boyy	Bulgari	Burberry	Celine	Chanel	Chloe	Dior	Fendi	Givenchy	Gucci	Goyard	Hermes	Loewe	LV	Prada	Valentino	Valextra	YSL
Mango AKA - Binli (Alice)				Burberry										Loewe			Valentino		
Marble					Celine	Chanel	Chloe	Dior			Gucci			Loewe	LV				YSL
MBB							Chloe												
Mingxing AKA - Mingx (Alice)															LV				
Nickloe AKA - Nick (Alice) and Nickol (Heidi)									Fendi										
Original Factory			Bulgari		Celine	Chanel				Givenchy	Gucci							Valextra	
Ounifan AKA - Ouni (Alice)									Fendi										
Pomegranate AKA - Pomegranate Girl (Heidi)											Gucci								
Qiutian														Loewe					
Red Brick AKA - BSH (Alice)											Gucci								
Stripes					Celine						Gucci								
SYmode														Hermes					
VV						Chanel													
Wenfa						Chanel													
White Branch									Fendi										
White Chair AKA - Changjiang (Alice)						Chanel													
Yellow Wall															LV				
Yi						Chanel													
Yisili																			YSL
Yoyo						Exotic Chanel													
187						Chanel													

ANGEL FACTORY
 Specialties: Céline, Dior
 AKA - AF, Diana (Heidi)

Sellers - Heidi, Oli, Martha, Redden, Tong, Vken
 Link: <https://imgur.com/a/Jo077VD>



BAILI
 Specialty - Céline, Chanel

About: Large manufacturer similar in profile to Jxg. Wide variety of brands are replicated from Boyy to Fendi to Chanel to Louis Vuitton. A plethora of choices and good stock available at affordable prices. They're not known for top accuracy. The leather quality can be mediocre. The bags occasionally have messy logo stamps and sometimes incorrect glazing colors depending on the brand, style, and color. However, they are an economical option with many bags to pick from and are widely available through a large number of sellers. They're not easy to identify since they use numerous backdrops for their stock images.

Sellers - Alice, Linda, Min, Oli, QinQin
 Link: <https://imgur.com/a/Tjmwyz>



BEIGE COUCH
 Speciality - Céline
 AKA - Beige Marble Factory (RL), Wuxiaojie (Alice)

About: A high mid-tier factory producing decently accurate reps with varying degrees of quality. They excel at the Céline Trio using the softest, most luxe feeling lambskin. Pay close attention to the typeface used for logo stamps as they can be inconsistent with that detail.

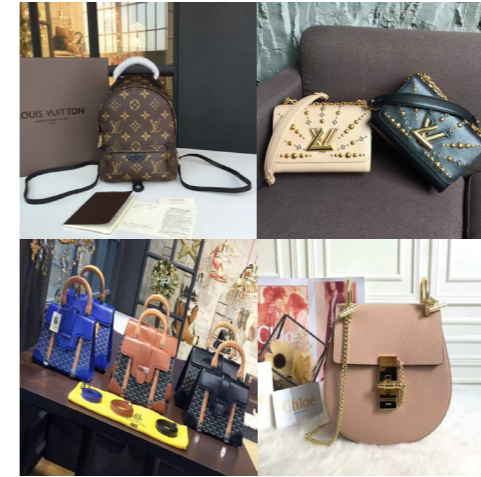
Sellers - Alice, Audrey, Linda, Martha, Min, Oli, Redden, Vken
 Link: <https://imgur.com/a/fkaMKqv>



BIRDCAGE
Specialty - Louis Vuitton
AKA - Bonica (Bank)

About: Although they rep numerous other brands such as Loewe, Valentino, Goyard, and Céline, they are most famous for their LV. Many sellers work with this factory, which seemingly has a large operation and are quick to replenish inventory.

Sellers - Aling, Apple, Bank, Elaine, Heidi, James, Nina, Oli, OC, QinQin, Tina, Vken, Zippy
Link: <https://imgur.com/a/P1RYD4B>



BLACK FRAME
Speciality - Prada
AKA - JPH (Heidi), JS (Alice)

About: The destination for Prada, SLG, and accessories such as bag charms and key chains. They are popular on RL for their Cahier bags and James Jean illustrated Bunny Print line. Also makes Bulgari and Céline.

Sellers - Audrey, Benny, Martha, Oli, Redden, Sandy, Vken
Link: <https://imgur.com/a/ZO6Ukv>



BLACK MARBLE
Speciality - Louis Vuitton
AKA - Bonica (Bank)

About: Mid-tier factory that products many LV classic and seasonal reps. They make other brands such as Chloé. Beware of small inaccurate details such as location of logo stamps, etc.

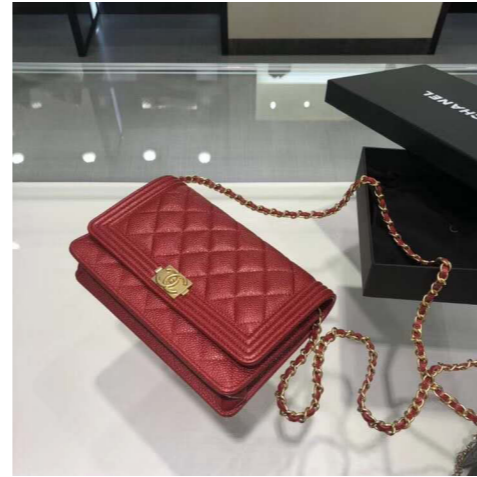
Sellers - Bank, OC, Nina
Link: <https://imgur.com/a/HH6PHW0>



CLASSICS FACTORY
Specialty - Chanel
AKA - 031 Classics (Vken), 1
Classics (Oli)

About: Specializes in Chanel bags and SLG. Good quality, mid-tier, and less expensive compared to 187 and GF. Produces budget friendly Reissues with decent accuracy.

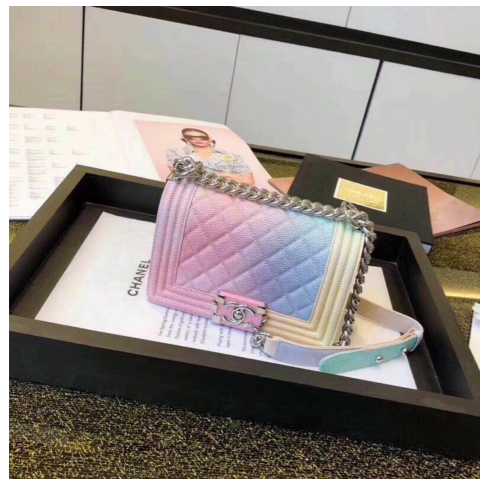
Sellers - Sellers - Oli, Vken
Link: <https://imgur.com/a/zRHFqxm>



CD
Specialty - Chanel

About: A lesser known Chanel factory. They advertise that their bags are made using leather from Haas.

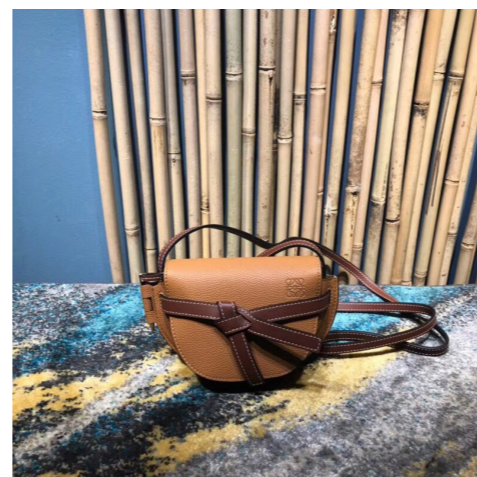
Sellers - Sellers - Alice
Link: <https://imgur.com/a/9qtsVhX>



ESF Factory
Specialty - Céline
AKA - Ugly Carpet Factory
(RL), Water Cup Factory (RL)

About: A mid-tier factory that limits production to a small set of brands such as Loewe and Givenchy, but concentrates on Céline and Céline wallets. Often uses the incorrect typeface for logo stamps, a common problem for lower grade suppliers.

Sellers: Emily, Heidi, Martha, Min, Oli, UB, Redden, Vken
Link: <https://imgur.com/a/asBy2QZ>



FEITE
Speciality - YSL
AKA - Feit (Alice)

About: Based on what we know, they only make YSL bags and accessories.

Sellers - Sellers - Alice, Martha, Oli, Redden
Link: <https://imgur.com/a/9YEJyhO>



FLORAL
Specialty - Gucci
AKA - Xiaoyi (Alice)

About: Focuses on Gucci classic and seasonal styles.

Sellers - Sellers - Alice, Heidi, Oli
Link: <https://imgur.com/a/Tjmwywz>



GD
Specialty - Chanel
Alias - Panda Factory (RL)

About: Another lesser known Chanel factory that claims to use imported European leather. The general consensus that they are high mid-tier. According to sellers, the bags are of good quality, well constructed, and priced slightly lower than 187 and GF depending on which seller you purchase from.

Sellers - Sellers - Alice, Heidi, Martha, Oli, Redden, Vken
Link: <https://imgur.com/a/ufJeobR>



GLASS DOOR
Specialty - Louis Vuitton

About: Similar to Birdcage Factory, a mid-tier manufacturer that mainly produces classic and seasonal LV including SLG. Their seasonal reps tend to be better than their classic offerings.

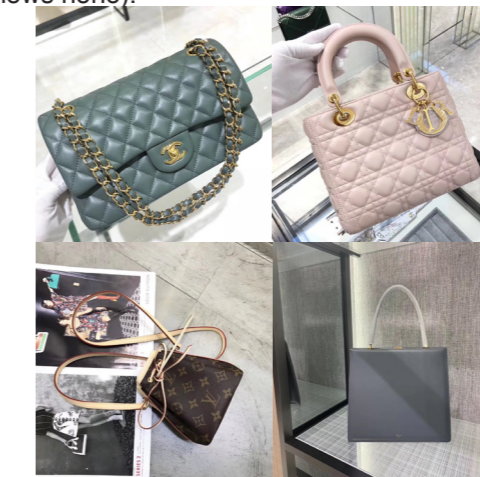
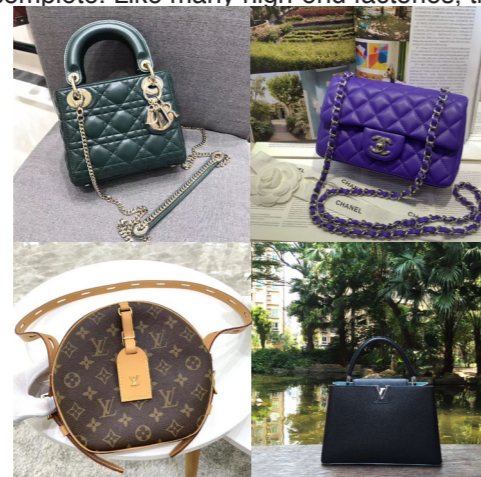
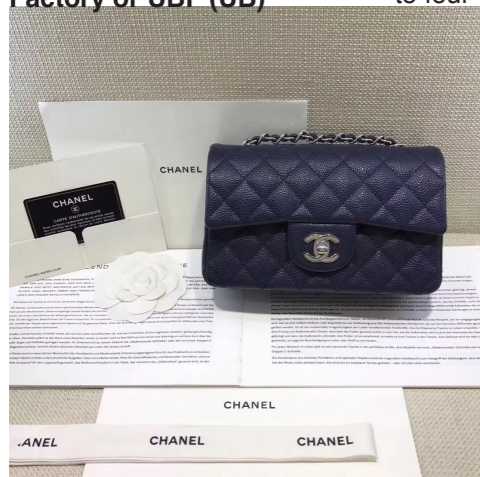
Sellers - Sellers - Alice, Darcy, Martha, OC, Redden, QinQin, Tina
Link: <https://imgur.com/a/ZvDTIG8>



GOD FACTORY
Specialty - Chanel, Dior, Louis Vuitton
AKA - GF, Uncle Bench Factory or UBF (UB)

About: One of the best Chanel rep factories and the second most expensive. GF's strengths include the 25cm CF and Boy bags with consistently tapered strap ends. Multiple members have mentioned in their reviews that compared to 187 and OF, GF has the best level of craftsmanship. They accept custom orders that allows you to choose leather type (lambskin, calfskin, caviar), quilting (classic quilting, chevron), color, and hardware (e.g. antique gold, light gold, matte gold, RHW, polished GHW and SHW). They will even let you pick whether the interior is stamped with "Made in Italy" or "Made in France." It takes approximately two to four weeks to complete. Like many high-end factories, they have a very inflexible returns and exchanges policies (allows none).

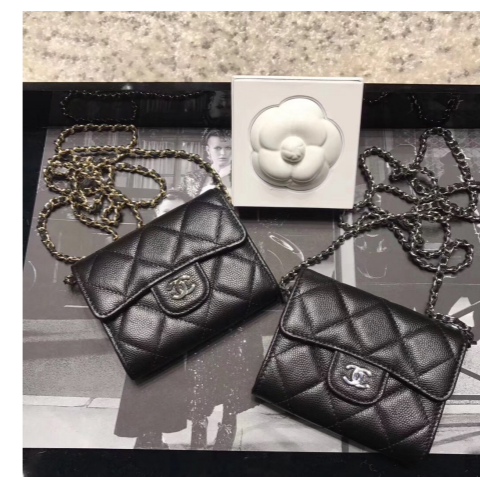
Sellers - Alice, Heidi, Linda, Martha, Min, Redden, Oli, Tong, UB, Vken
Link: <https://imgur.com/a/9I0wmNc>



GOLDEN TILE
Specialty - Chanel
AKA - Tile Factory (RL), Saibina (Alice, Vken)

About: Makes excellent seasonal Chanel styles, but also has well priced, accurate Chanel classics like the CF, WOC, and Boy. Their Boy bags have the desired snakehead strap. They are another factory that purchases authentic bags to copy from, and they regularly photograph their reps alongside the disassembled auth for their stock photos. They produce a diverse range of brands from LV to fledgling labels like Gabriela Hearst.

Sellers - Alice, Benny, Martha, Min, Oli, Redden, Vken
Link: <https://imgur.com/a/tO1gET7>



Now here's where things get confusing. There are many posts where people conflate Grey Couch with Golden Tile. Here is an instance of a set where most of the pictures are on a grey couch with the golden tile in the background, but there are images where you only see the couch and not the wall. These are two different factories with different specialties; Golden Tile just happens to actually own a grey couch. Confused? Yes. They do love their tacky accessories though, couch, tile or table, so that's one way to tell them apart.

GREY COUCH
 Specialty - Céline, Loewe, Gucci, YSL
 AKA - Wood Table Factory (Martha), Debi (Heidi)

About: A very popular factory in China, which means their stock runs out quickly. They were granted the name Grey Couch on RL because they used to photograph their bags on a dark grey couch, but have since switched backgrounds to a wooden table. Céline, Loewe, and Gucci bags are their strong suits. They also make Balenciaga, Bulgari, Burberry, Dior, YSL, seasonal Chanel, and other IG-popular styles.

Sellers - Sellers - Benny, Emily, Heidi, Marcia, Martha, Min, Oli, Redden, Vken
 Link: <https://imgur.com/a/8P5NPXd>



HUAHUI
 Speciality - Louis Vuitton
 AKA - HH (Alice)

About: A popular factory for LV reps.

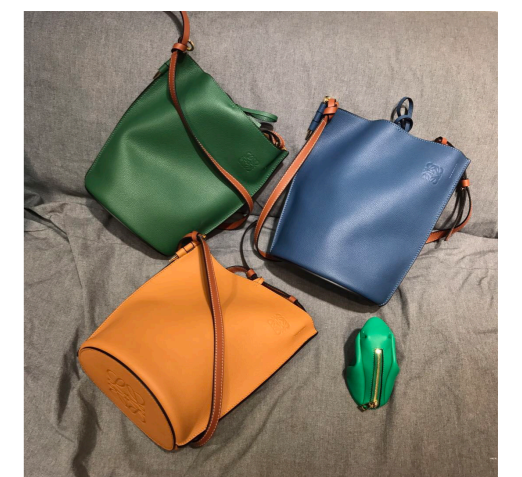
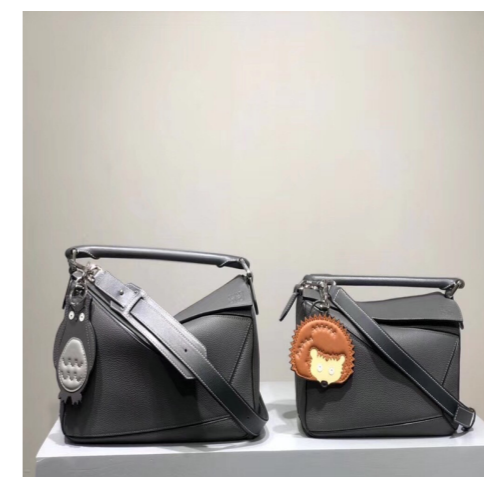
Sellers - Alice, Benny, Darcy, Linda, Martha, Nancy, Nina, OC, Oli, Redden, Vken
 Link: <https://imgur.com/a/nliqI9j>



JIPIN
 Speciality - Loewe

About: As far as we're aware, Jipin only manufactures Loewe.

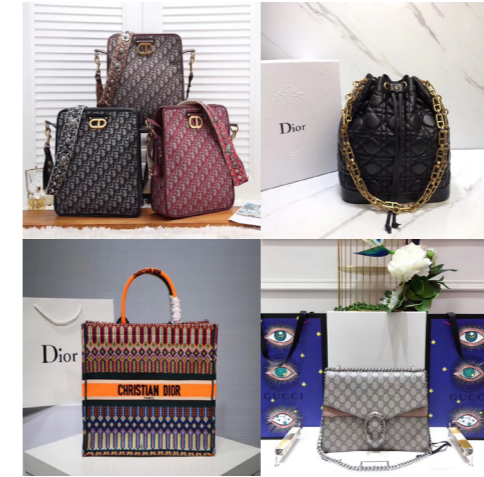
Sellers - Sellers - Alice, Heidi, Martha, Redden
 Link: <https://imgur.com/a/Zm3Ucac>



JLH
Specialty - Dior, Gucci, YSL

About: A factory that uses multiple backgrounds making them difficult to pinpoint. They produce reps of many brands with a heavy emphasis on the latest Dior and Gucci styles including SLG.

Sellers - Sellers - Alice, Aling, Apple, Candy, Darcy, Marcia, Nina, OC
Link: <https://imgur.com/a/ltVooEa>



JXG
Specialty - Céline

About: A massive factory that nearly all sellers have access to similar to Baili. They reproduce every brand from BV to YSL in so long as it's currently popular. They are an RL favorite for mid-tier Céline with a well reviewed level of accuracy at attractive prices. Their best Céline styles are the Luggage, specifically the Nano and the Belt. However, a few colorways have the incorrect edge paint colors (tonal instead of contrasting).

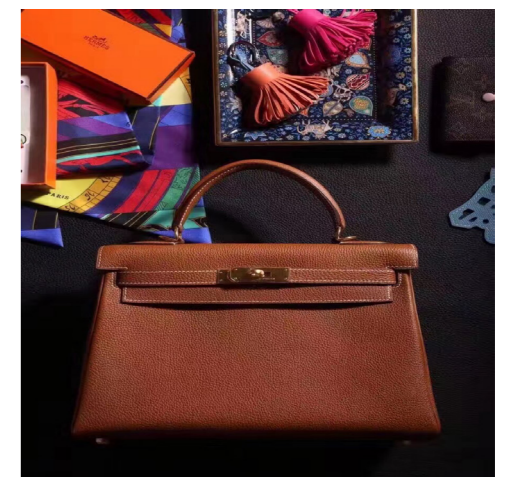
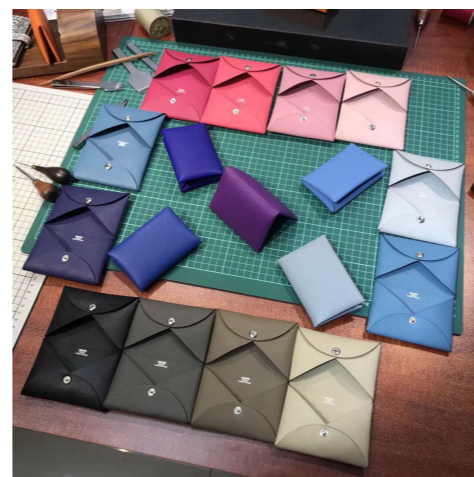
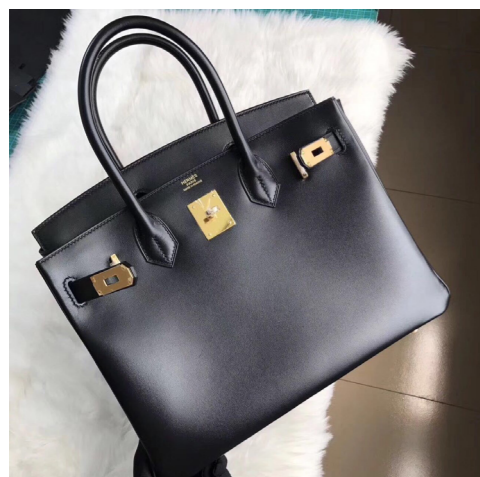
Sellers - Sellers - Alice, Audrey, Bela, Candy, Martha, Oli, QinQin, Redden
Link: <https://imgur.com/a/2zWbG7C>



LOTUS
Specialty - Hermès

About: Makes both cheaper half-hand and higher priced full hand-stitched Hermès bags, wallets, shoes, accessories using imported European leather. They accept custom orders for regular and exotic skin bags, which take about four to six weeks to finish.

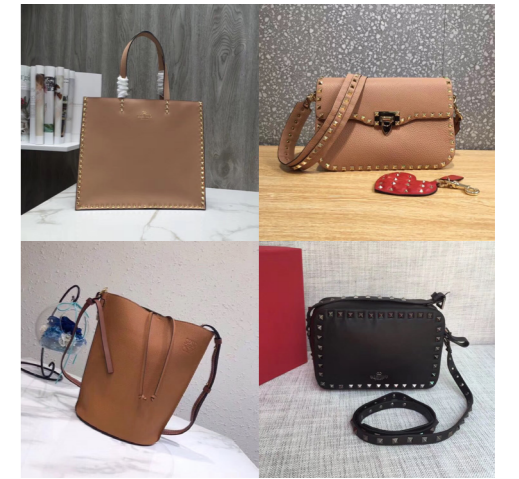
Sellers - Sellers - Alice, Min
Link: <https://imgur.com/a/wXoBiIE>



MANGO
AKA - Binli (Alice)

About: Small factory most known for Loewe.

Sellers - Sellers - Alice, Heidi, Martha, Oli, Redden
Link: <https://imgur.com/a/lGIXfX1>



MARBLE (aka Yipin)
Specialty - Céline, Loewe
yupoo: <http://xinyong-hu.x.yupoo.com>

About: A highly rated factory for Phoebe Philo-era Céline particularly the Classic Box. Other brands they habitually rep: Loewe, Gucci, YSL, Chloé, Dior, and, lately, seasonal Chanel and LV. They release limited colors and their inventory goes out of stock fast. It is recommended that you preorder as that's the only way of ensuring you'll get the style and color you want. Marble purchases authentic bags for reverse engineering and they also copy the packaging to a T.

Sellers - Sellers - Benny, Elaine, Emily, Heidi, Linda, Martha, Min, Sandy, UB
Link: <https://imgur.com/a/3xFhhOY>



MBB
Specialty - Chloé
AKA - MBB Uncle (Bank)

About: Popular for Chloé classic and seasonal styles. Also produces classic Loewe styles such as the Puzzle and Gate.

Sellers - Sellers - Alice, Bank
Link: <https://imgur.com/a/96qRQX9>



MINGXING
Speciality - Louis Vuitton
AKA Mingx (Alice)

About: Known for their classic and seasonal LV bags.

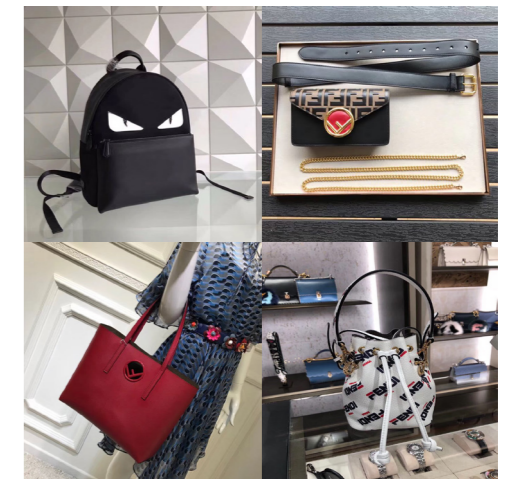
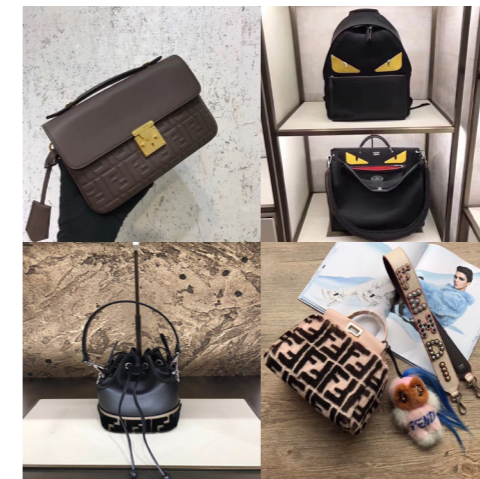
Sellers - Sellers - Alice, Benny, Martha, Nancy, Nina, Oli, Redden, Vken
Link: <https://imgur.com/a/g0mgqvq>



NICKLOE
Specialty - Fendi
AKA - Nick (Alice), Nickol (Heidi)

About: Nickloe is to Fendi what Marble is to Céline. They've earned a reputation for the highest quality, accurate Fendi bags in the rep industry. They also make Fendi SLG, accessories (e.g. Strap You and bag charms), and extremely limited quantities of specific Tom Ford bags. There are other factories that have similar backdrops that can easily be mistaken for Nickloe (i.e. Ounifan).

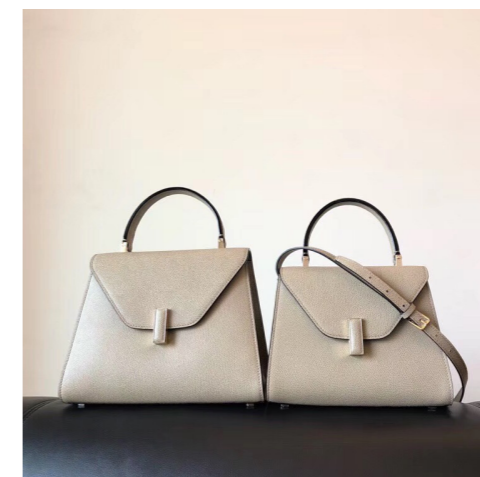
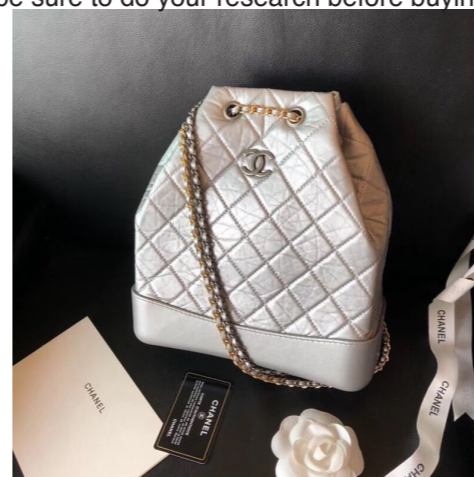
Sellers - Sellers - Alice, Bank, Darcy, Emily, Erica, Heidi, Linda, Marcia, Martha, Min, Oli, QinQin, Redden, Vken
Link: <https://imgur.com/a/9IPORp6>



ORIGINAL FACTORY
Specialty - Chanel
AKA - OF (RL), New Factory (UB), Wooman Factory (Marcia)

About: OF began as a Chanel-only vendor and has recently branched out to include other designers such as Bulgari, Céline, Gucci, Givenchy, Goyard, Valextra, and YSL. Considered a top-tier Chanel factory, OF has been praised by RL members for their impressive leather quality. They are one of a few factories to produce Boy bags with the correct strap end. According to them, they use Haas and Bodin-Joyeux for some of their bags. OF can be inconsistent when it comes to accuracy. They've demonstrated a tendency to make colorways not produced by the brands themselves or use incorrect edge paint, so be sure to do your research before buying.

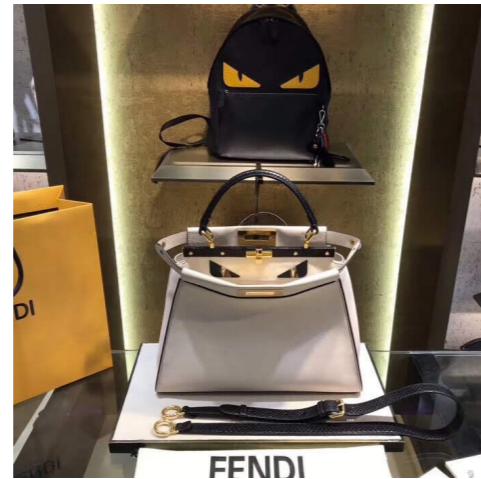
Sellers: Heidi, Linda, Marcia, Martha, Min, Redden, UB, Vken
Link: <https://imgur.com/a/xJATHb8>



OUNIFAN
Specialty - Fendi
AKA - Ouni (Alice)

About: According to multiple TS, they are roughly equivalent to Nickloe for Fendi reps although many still say Nickloe is best. Their stock photos are very similar to and can be easily confused for Nickloe. The best way to distinguish between the two is the size of the bronze shelves in the background. Ouni's are thicker with more prominent beveling than Nickloe's.

Sellers - Sellers - Alice, Heidi, Oli
Link: <https://imgur.com/a/B7OL7OL>



POMEGRANATE
Specialty - Gucci
AKA - Pomegranate Girl
(Heidi)

About: Specializes in Gucci, and most recently, Céline.

Sellers - Sellers - Alice, Heidi, Martha, Redden, Vken
Link: <https://imgur.com/a/FJf7YeD>



QUITAN
Specialty - Loewe

About: Another factory that solely specializes in Loewe classic styles and seasonal colorways.

Sellers - Sellers - Alice, Martha, Redden
Link: <https://imgur.com/a/0KCIQkR>



RED BRICK
Specialty - Gucci
AKA - BSH (Alice)

About: Mid-tier, lower priced factory that is popular for budget-friendly Gucci reps.

Sellers - Sellers - Alice, Candy, Darcy, Emily, Nancy, Oli
Link: <https://imgur.com/a/gzsqmMd>



STRIPES
Specialty - Céline

About: Mid-tier factory that heavily focuses on Céline and Gucci. Decent accuracy (issues with typeface) and adequate quality. Their leather can be stiff, dry, and not luxurious to the touch compared to other factories of its caliber and price range.

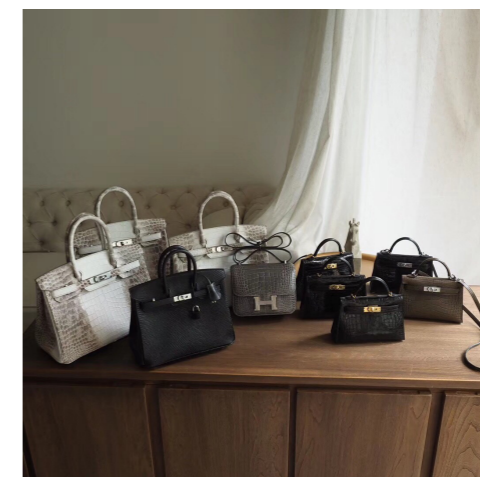
Sellers - Sellers - Audrey, Bank, Martha, Oli, QinQin, Redden
Link: <https://imgur.com/a/NIYKcKc>



SYmode
Specialty - Hermès

About: Made famous by, you guessed it, SYmode, but not owned by them, a common misconception. They only produce fully hand-stitched Hermès bags, and they are one of many factories that claims to buy their leather from Tanneries Haas. They have two quality levels. Although both are entirely hand-stitched using imported leather, the only identifiable feature between the two is the typeface used for the blind stamp. Specify with your seller which quality you are paying for and will be receiving. They accept custom orders, which can take anywhere from two to six weeks depending on how busy they are.

Sellers - Sellers - Angel, Elaine
Link: <https://imgur.com/a/pvvY7KI>



VV
Specialty - Chanel
AKA - Qiqi (Linda)

About: A well regarded factory that isn't as popular as GF, 187, and OF. The Boy bags have the correct strap end shape and most of their bags have the right logotype for the interior stamps, but be sure to verify with the seller beforehand and double-check during the QC stage.

Sellers - Sellers - Alice, Candy, Heidi, Linda, Martha, Oli, Redden, Vken
Link: <https://imgur.com/a/wYVAYtW>



WENFA
Specialty - Chanel

About: Wenfa manufactures mid-grade Chanel bags and SLG. A more budget friendly option for moderately accurate Chanel if you'd rather not spend the money the higher tier factories commands. They also offer exotic skin bags such as python and lizard at low prices (\$200 range), but they have a tendency to produce fantasy colorways and the interior logo stamp typeface is inconsistent across all styles. They claim to use Haas leather for their higher grade Chanel reps.

Sellers - Sellers - Alice, Aling, Bank, Martha, Nina, Redden, Tina, Vken
Link: <https://imgur.com/a/AovABYQ>



WHITE BRANCH
Specialty - Fendi

About: An up-and-coming vendor that produces several brands like Chanel and Gucci using good materials with a high level of accuracy at a reasonable price. Similar in profile to Golden Tile. They favor Fendi and are cheaper than Nickloe and Ouni, but their quality is comparable. Their bestseller is the Peekaboo.

Sellers - Sellers - Audrey, Candy, Darcy, Martha, Min, Oli, Redden, Tina, Vken
Link: <https://imgur.com/a/NNXKPhv>



WHITE CHAIR
Specialty - Chanel
AKA - Changjiang (Alice)

About: Mid-tier factory with persistent, yet minor accuracy issues spanning hardware and logotype (according to the sellers we've spoken to). They make both classic and seasonal Chanel styles. Their strength is the latter.

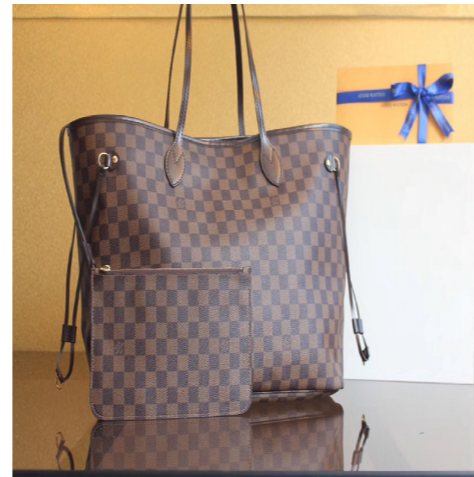
Sellers - Alice, Audrey, Bank, Emily, Linda, Nina, Oli, QinQin, Vken, Zippy
Link: <https://imgur.com/a/oKNsPy0>



YELLOW WALL
Speciality - Louis Vuitton

About: Known for their classic and seasonal LV bags.

Sellers - Sellers - Alice, Linda, Martha, Redden
Link: <https://imgur.com/a/TLKpht2>



YI
Specialty - Chanel

About: Low mid-tier reps of Chanel bags and accessories. Their interior logo stamp is incorrect. Some of their factory pictures can be easily confused with GF.

Sellers - Alice, Min, Marcia, Martha, Oli, Redden, Vken
Link: <https://imgur.com/a/g7TQFtH>



YISILI
Speciality - Exotic Chanel

About: Produces well priced, mid-tier Chanel bags. Popular on RL for their Reissues and python CF and Boy bags.

Sellers - Linda, Min, Oli
Link: <https://imgur.com/a/bNOrCHp>



YOYO
Speciality - Louis Vuitton

About: Known for their classic and seasonal LV bags.

Sellers - Sellers - Alice, Linda, Martha, Redden
Link: <https://imgur.com/a/e5vpnYD>



187
Specialty - Chanel

About: 187 is one of the top Chanel factories in the market. Their strengths include the CF line most notably their caviar Jumbo, which has the most accurate flap shape compared to the other top Chanel vendors. They are also known to produce the best distressed calfskin used for the Re-issue and Gabrielle lines. 187 is expensive, and recently introduced two quality levels. Their top one is referred to as "Extreme" or "King". Further, their stock pictures are poor (i.e. bad lighting, taken at a distance, situated at odd angles, no close-ups of the interior, back, or hardware) and, until very recently, their Boy strap end shape was inaccurate.

Sellers - Sellers - Alice, Emily, Elaine, Heidi, Linda, Martha, Oli, Redden, Tong, UB, Vken
Link: <https://imgur.com/a/ZmbUfNi>

